

POWER TEAM

A division of SPX Corporation

2121 West Bridge Street
Owatonna, MN 55060 USA

Phone: (507) 455-7100

Tech. Services: (800) 477-8326

Fax: (800) 765-8326

Order Entry: (800) 541-1418

Fax: (800) 288-7031

International Sales: (507) 455-7150

Fax: (507) 455-7122

Internet Address:

<http://www.powerteam.com>

Form No. 100821

Parts List for:

100179

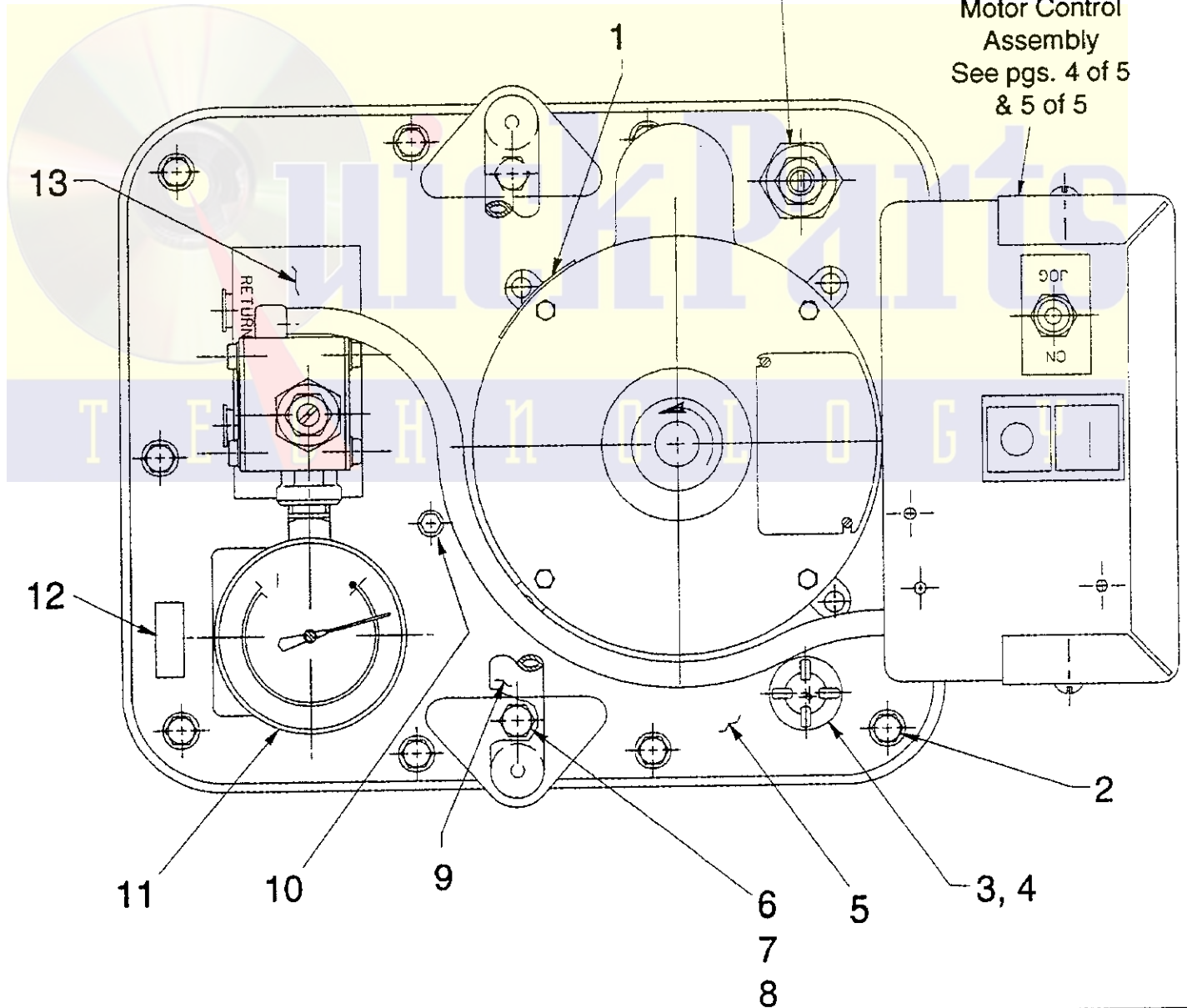
100179-230

ELECTRIC HYDRAULIC PUMP

TOP VIEW

Pressure
Regulator
Assembly
See back pg. 1 of 5

Motor Control
Assembly
See pgs. 4 of 5
& 5 of 5



Sheet No. 1 of 5

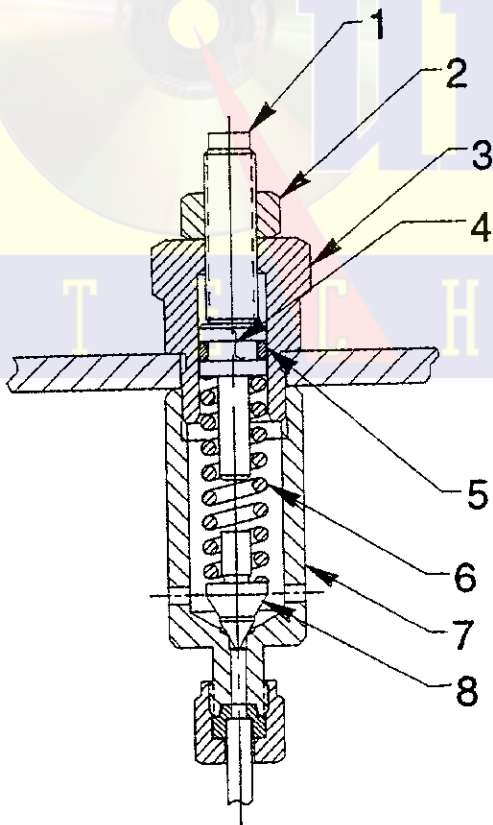
Rev. 1

Date: 29 May 1997

Item No.	Part No.	No. Req'd	Description
1	*304850	1	Warning Decal
2	209799	10	Self Tapping Screw (Torque to 50/60 in. lbs.)
3	20937	1	Filler/Vent Plug
4	200415	1	O-ring (Square Section)
5	46064	1	Cover Plate
6	12825	2	Cap Screw (1/4-20 x 5/8 Lg.; Torque to 60/80 in. lbs.)
7	10245	2	Lockwasher
8	10199	2	Hex Nut (1/4-20)
9	47492	1	Handle
10	10030	1	Cap Screw (1/4-20 x 1/2 Lg.; Torque to 220/240 in. lbs.)
11	17946	1	Gauge
12	203972	1	Decal (CSA approval)
13	420029	1	Manifold Body

Part numbers marked with an asterisk (*) are contained in Repair Kit No. 300430.

PRESSURE REGULATOR ASSEMBLY



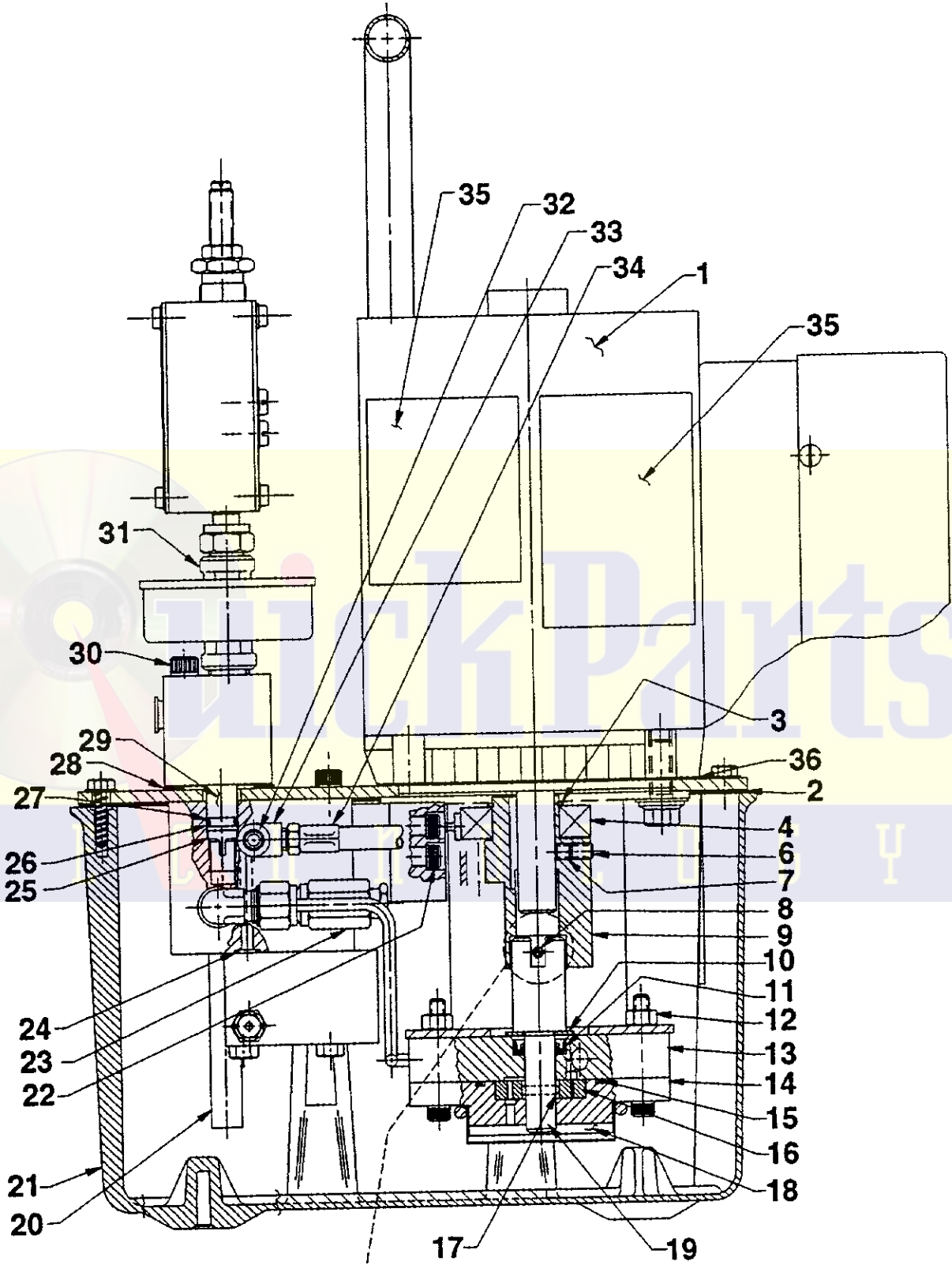
Item No.	Part No.	No. Req'd	Description
1	22362	1	Adjusting Screw
2	10386	1	Locknut (3/8-24)
3	21305	1	Valve Cap
4	21306	1	Spring Guide
5	10268	1	O-ring (1/2 x 3/8 x 1/16)
6	10495	1	Compression Spring
7	22361	1	Pressure Regulator Body
8	21046	1	Poppet

Refer to any operating instructions included with this product for detailed information about operation, testing, disassembly, reassembly, and preventive maintenance.

Items found in this parts list have been carefully tested and selected. Therefore: Use only genuine Power Team replacement parts!

Additional questions can be directed to our Technical Services Department.

SIDE VIEW



.001
.010 CLEARANCE REQUIRED

Parts List, Form No. 100821, Back sheet 2 of 5

Item No.	Part No.	No. Req'd	Description
1	58196WH2	1	Electric Motor
2	*40164	1	Gasket
3	209798	1	Retaining Ring
4	209805	1	Bearing
6	10519	1	Set Screw (1/4-20 x 3/8 Lg.; Torque to 60/80 in. lbs.)
7	10136	1	Set Screw (1/4-20 x 1/4 Lg.; Torque to 60/80 in. lbs.)
8	10973	1	Slotted Spring Pin (3/16 O.D. x 1-1/4 Lg.) NOTE: Locate slot as shown in detail.
9	45596	1	Eccentric
10	12595	1	Washer
11	*304830	1	Oil Seal
12	10199	2	Hex Nut (1/4-20)
13	61170	1	Upper Gerotor Housing
14	61169	1	Lower Gerotor Housing
15	*10922	1	O-ring (2-1/8 x 1-15/16 x 3/32)
16	304826	1	Gerotor Set
17	209794	1	Pin
18	21846	1	Filter Support
19	304835	1	Drive Shaft
20	200609	1	Drain Tube
21	61165	1	Reservoir
22	10022	4	Cap Screw (1/4-20 x 1-1/2 Lg.; Torque to 180/200 in. lbs.)
23	21278-50	1	Relief Valve (Set at 5,100/5,700 PSI)
24	*10266	1	O-ring (3/8 x 1/4 x 1/16)
25	209795	1	Outlet Ball Stop
26	*10268	2	O-ring (1/2 x 3/8 x 1/16)
27	*11863	2	Backup Washer
28	*304829	1	Gasket
29	202505	1	Bushing
30	209945	2	Soc. Hd. Cap Screw (5/16-18 UNC x 2-1/2 Lg.; Torque to 220/240 in. lbs.)
31	10618	1	Tee Fitting
32	10427	1	Pipe Plug (1/8 NPTF)
33	19463	1	Tee Fitting (Brass)
34	304819	1	Hose Assembly
35	200188	1	Warning Decal
36	351060	1	Gasket

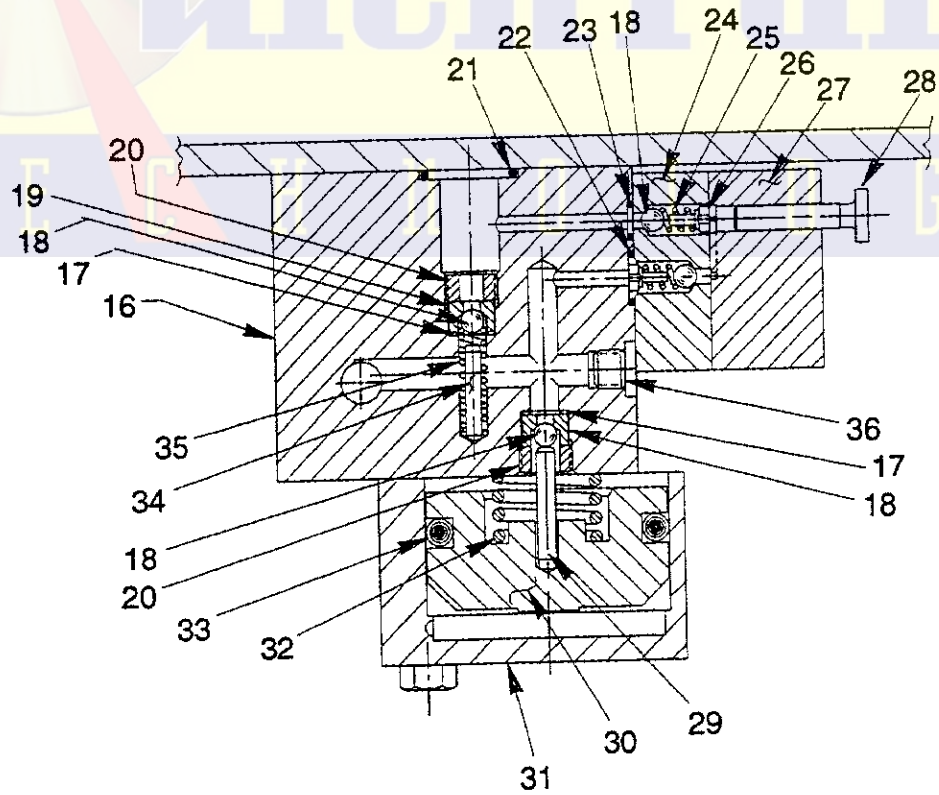
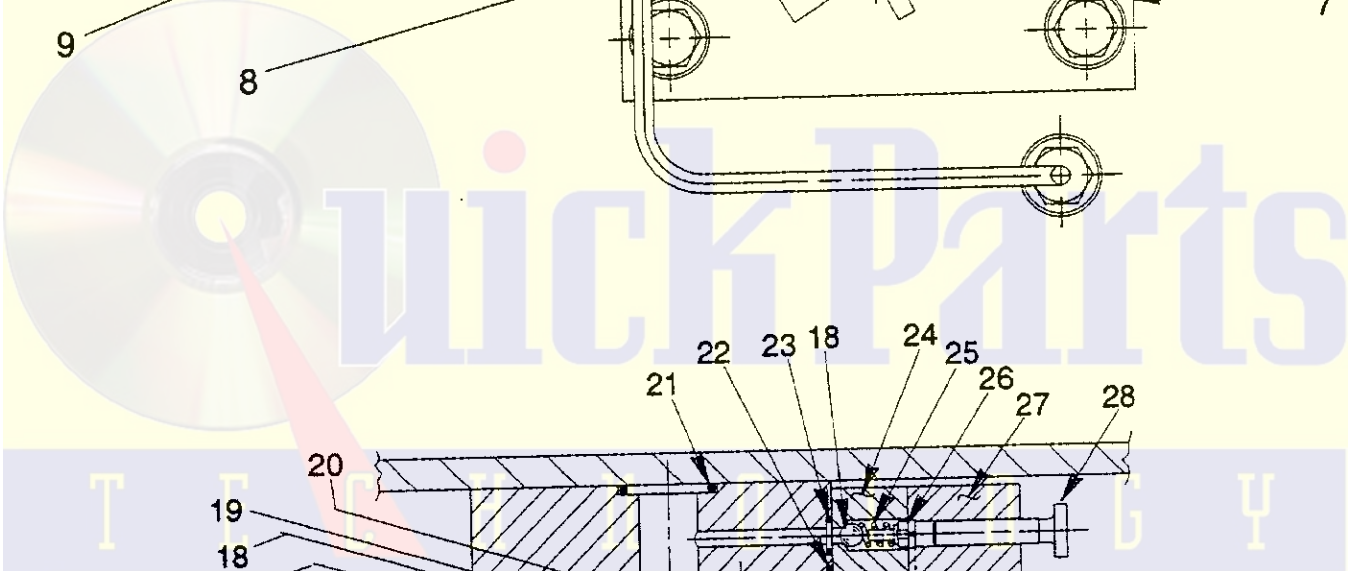
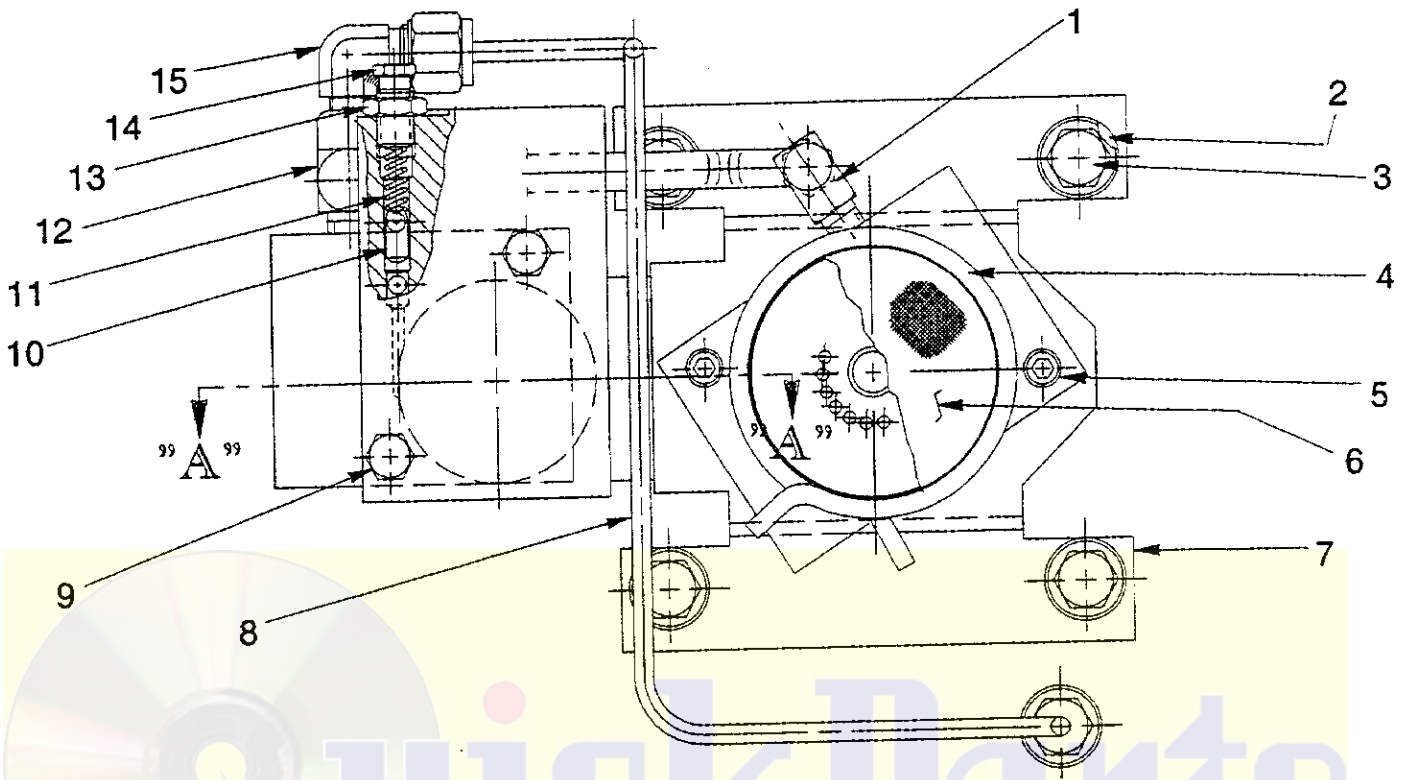
PARTS INCLUDED BUT NOT SHOWN

309233	2	Trade Name Decal
213771	1	Quick Coupler

Part numbers marked with an asterisk (*) are contained in Repair Kit No. 300430.

Note: Shaded areas reflect last revision(s) made to this form.

BOTTOM VIEW



SECTION A-A

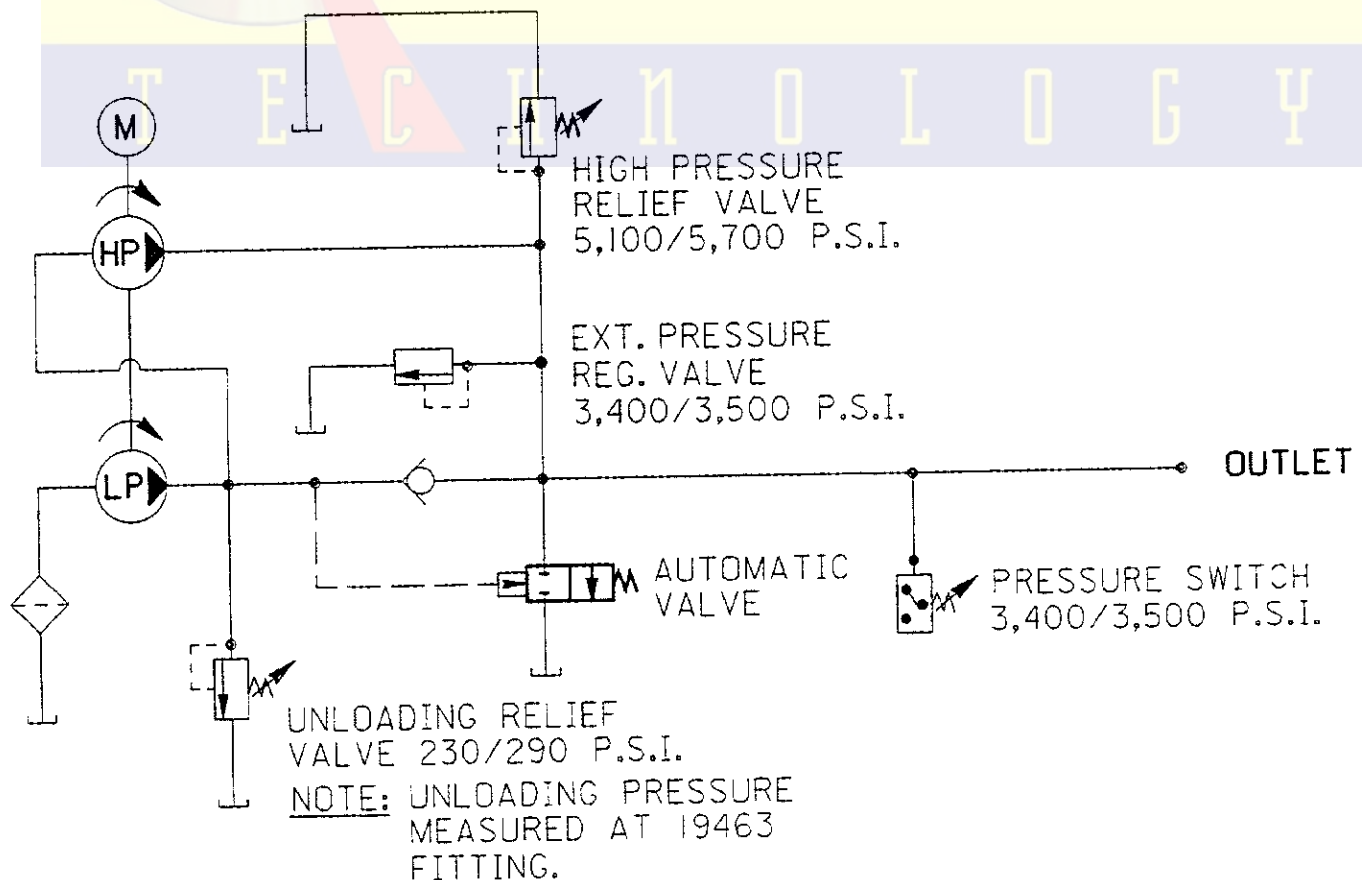
Parts List, Form No. 100821, Back sheet 3 of 5

Item No.	Part No.	No. Req'd	Description
1	14440	1	90° Elbow Fitting
2	10258	4	Washer (13/16 x 3/8 x 1/16)
3	213663	4	Flange Hd. Screw (3/8-16 x 1" Lg.; Torque to 230/250 in. lbs.)
4	11461	1	Clamp Ring
5	10854	2	Cap Screw (Torque to 60/80 in. lbs.)
6	21608	1	Filter
7	52174	1	Bracket
8	306171	1	Tube Assembly
9	13037	2	Cap Screw (1/4-20 x 2" Lg.; Torque to 40/50 in. lbs.)
10	211080	1	Dowel Pin (1/4 O.D. x 1/2 Lg.)
11	*11221	1	Compression Spring
12	18969	1	Tee Fitting
13	10386	1	Hex Locknut (3/8-24)
14	*29786	1	Adjusting Screw (Unloading Relief Valve)
15	11278	1	90° Elbow Fitting
16	61167	1	Check Body
17	*10442	2	Copper Washer (3/8 x 1/4 x 1/32)

Item No.	Part No.	No. Req'd	Description
18	*12223	4	Ball (3/16 dia.)
19	*209787	2	Replaceable Seat
20	209797	2	Hollow Lock Screw (7/16-20; Torque to 180/200 in. lbs.)
21	*10273	1	O-ring (13/16 x 5/8 x 3/32)
22	*14763	1	O-ring
23	*10265	1	O-ring (5/16 x 3/16 x 1/16)
24	45559	1	High Pressure Check Block
25	*10445	2	Compression Spring
26	24549	1	Valve Guide
27	45866	1	High Pressure Piston Block
28	305526	1	High Pressure Piston
29	211843	1	Dowel Pin (3/16 O.D. x 1" Lg.) NOTE: Install with radius end out.
30	46063	1	Automatic Valve Piston
31	52167	1	Automatic Valve Block
32	*16346	1	Compression Spring
33	*10283	1	O-ring (2" x 1-5/8 x 3/16)
34	12149	1	Dowel Pin (1/8 O.D. x 3/4 Lg.)
35	*16057	1	Compression Spring
36	15130	1	Pipe Plug (1/16 NPTF)

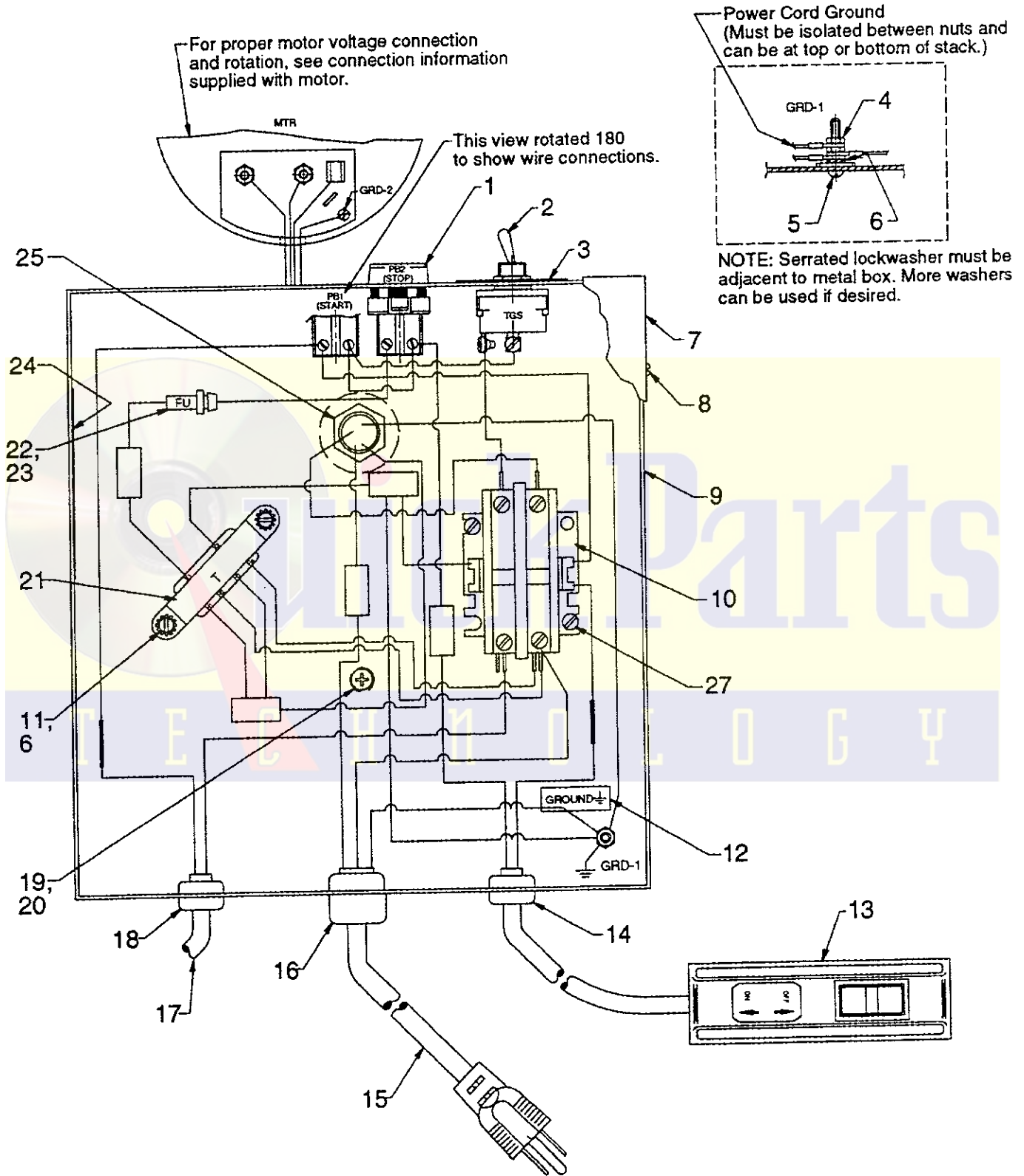
Part numbers marked with an asterisk (*) are contained in Repair Kit No. 300430.

HYDRAULIC SCHEMATIC



MOTOR CONTROL ASSEMBLY

115 V., 60 Hz.; For 100179



Parts List, Form No. 100821, Back sheet 4 of 5

Item No.	Part No.	No. Req'd	Description
1	309019	1	Push Button Switch
2	12301	1	Toggle Switch
3	204577	1	Decal (ON - JOG)
4	10197	2	Hex. Nut (#10-24)
5	11856	1	Rd. Hd. Machine Screw (#10-24 x 1" Lg.)
6	11108	3	Washer (#10 External Tooth)
7	43126WH2	1	Motor Control Box Cover
8	14812	4	Pan Hd. Tapping Screw
9	51218WH2	1	Motor Control Box
10	420718-4	1	Contactors
11	11539	2	Rd. Hd. Machine Screw (#10-24 x 1/4 Lg.)
12	205189	1	Decal (Ground)
13	25017	1	Hand Switch
14	15993	1	Strain Relief Bushing
15	25229	1	Cord Set (14/3 SJTO)

Item No.	Part No.	No. Req'd	Description
16	210112	1	Strain Relief
17	52203	1	Pressure Switch Assembly
18	215857	1	Strain Relief Bushing
19	13532	1	Pan Hd. Tapping Screw (#8-32 x 3/8 Lg.)
20	206857	1	Washer
21	305665	1	Transformer
22	16887	1	Fuse Holder
23	206962	1	Fuse (3A)
24	250150	1	Decal (Fuse warning)
25	11202	1	Conduit Nipple
26	212434	1	Washer
27	10166	2	Machine Screw

PARTS INCLUDED BUT NOT SHOWN

200188	1	Warning Decal
213695	1	Decal (Intermittent Duty)

ELECTRICAL SCHEMATIC

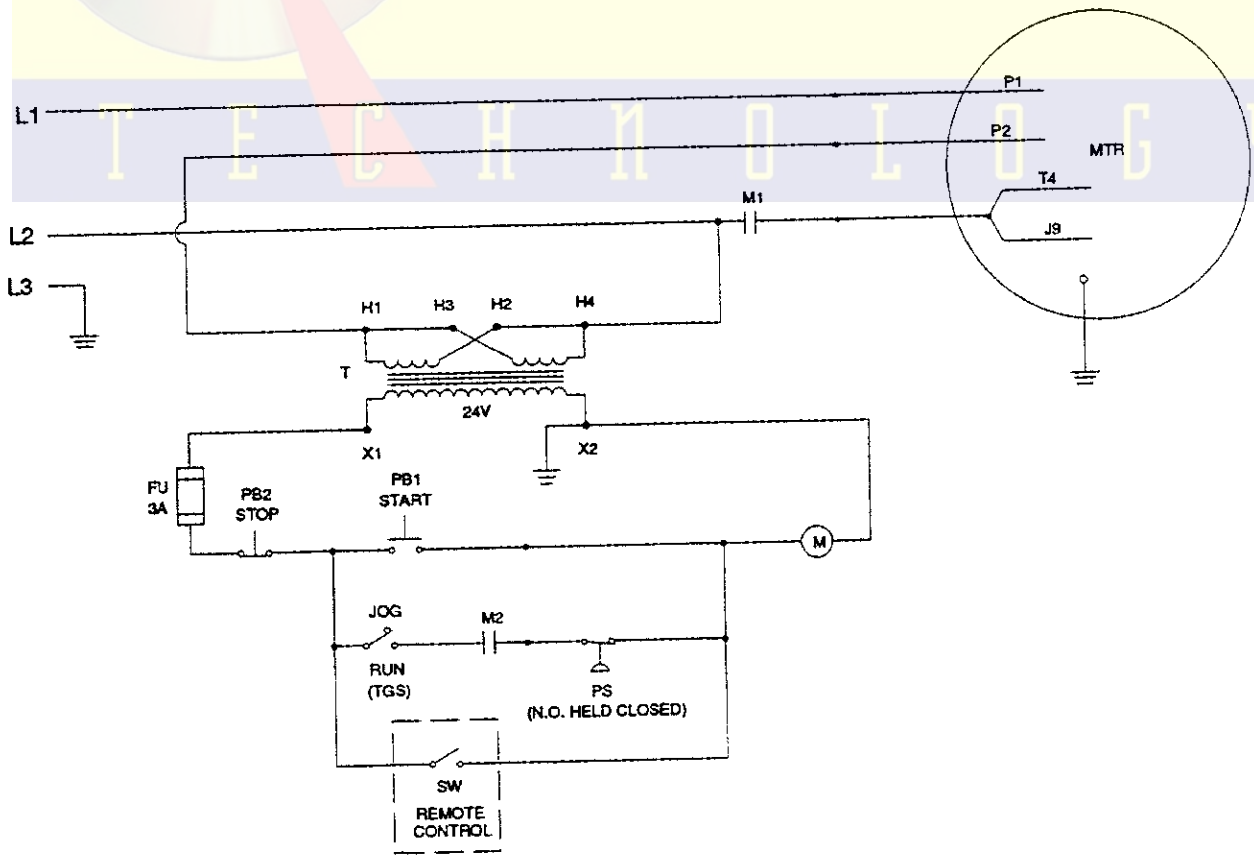
115 V., 60 Hz.



To help avoid personal injury, all electrical work must be done by a qualified electrician.

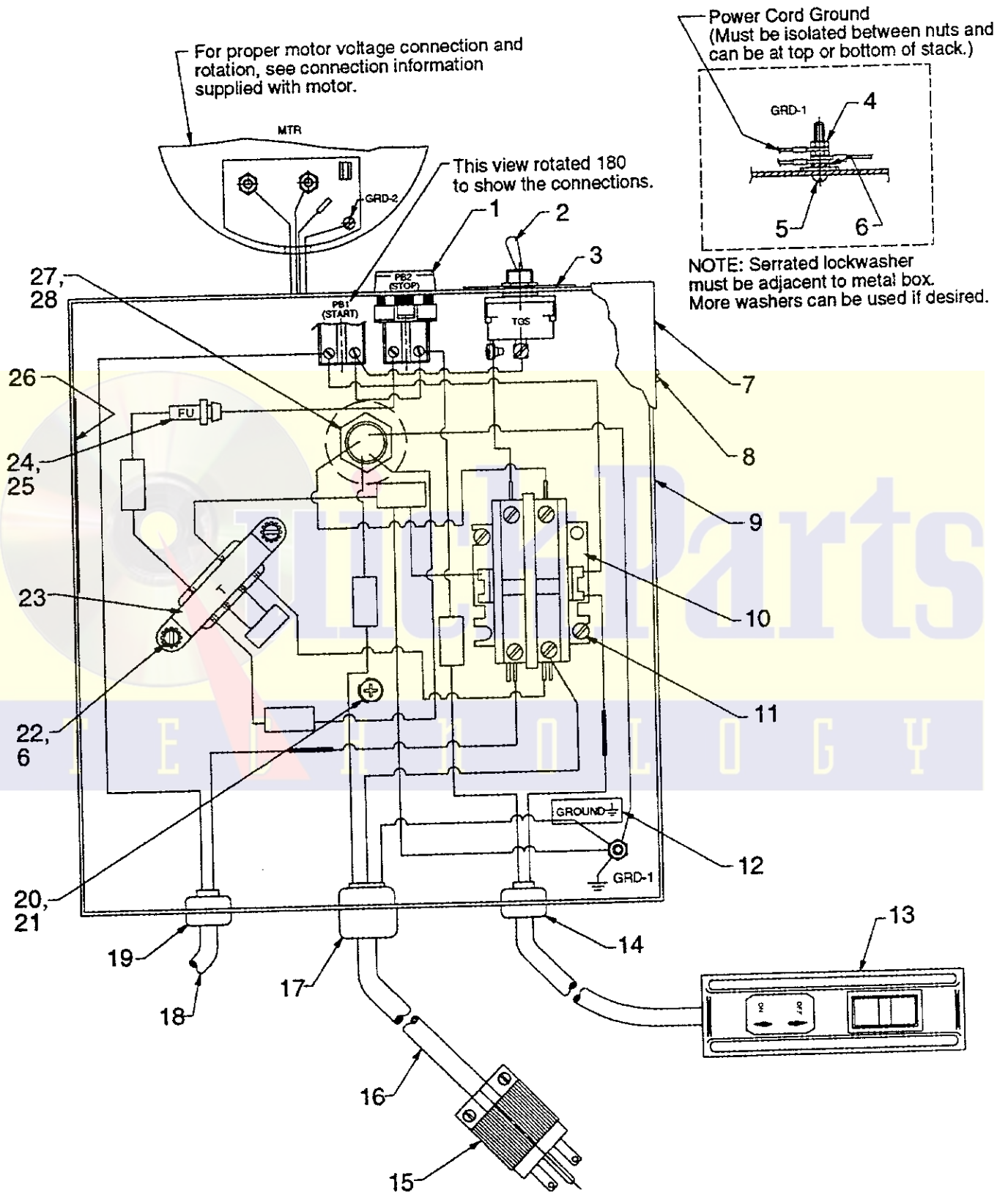
North American & International Color Codes

Conductors	North American	International
Line	Black	Brown
Neutral	White	Blue
Ground	Green	Green/Yellow



MOTOR CONTROL ASSEMBLY

230 V., 60 Hz.; For 100179-230



Parts List, Form No. 100821, Back sheet 5 of 5

Item No.	Part No.	No. Req'd	Description	Item No.	Part No.	No. Req'd	Description
1	309019	1	Push Button Switch	18	52203	1	Pressure Switch Assembly
2	12301	1	Toggle Switch	19	215857	1	Strain Relief Bushing
3	204577	1	Decal (ON - JOG)	20	13532	1	Pan Hd. Tapping Screw (#8-32 x 3/8 Lg.)
4	10197	2	Hex. Nut (#10-24)	21	206857	1	Washer
5	11856	1	Rd. Hd. Machine Screw (#10-24 x 1" Lg.)	22	11539	2	Rd. Hd. Machine Screw (#10-24 x 1/4 Lg.)
6	11108	3	Washer (#10 External Tooth)	23	305665	1	Transformer
7	43126WH2	1	Motor Control Box Cover	24	16887	1	Fuse Holder
8	14812	4	Pan Hd. Tapping Screw	25	206962	1	Fuse (3A)
9	51218WH2	1	Motor Control Box	26	250150	1	Decal (Fuse warning)
10	420718-4	1	Contactors	27	11202	1	Conduit Nipple
11	10166	2	Machine Screw	28	212434	1	Washer
12	205189	1	Decal (Ground)				
13	25017	1	Hand Switch				
14	15993	1	Strain Relief Bushing				
15	11209	1	Electrical Plug				
16	308752	8 ft.	Electrical Cable (14/3 SJTO)				
17	210112	1	Strain Relief				

PARTS INCLUDED BUT NOT SHOWN
 200188 1 Warning Decal
 213695 1 Decal (intermittent Duty)

ELECTRICAL SCHEMATIC

230 V., 60 Hz.



WARNING

To help avoid personal injury, all electrical work must be done by a qualified electrician.

North American & International Color Codes

Conductors	North American	International
Line	Black	Brown
Neutral	White	Blue
Ground	Green	Green/Yellow

