

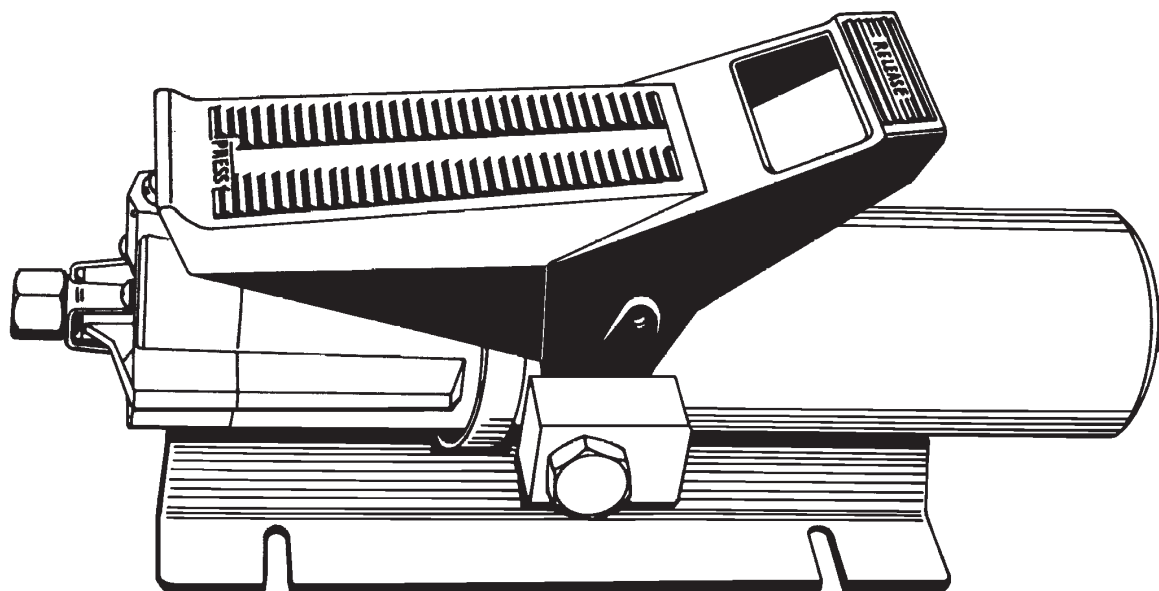
L2274

Rev. O

10/97

PC2205

For Date Codes beginning with "C".



**Install all kit components to insure optimum performance of the repaired pump.**

PUMP REPAIR PARTS LIST				
Item No.	Part No.	Quantity	Description	Figure No.
1	DA5816900SR	1	Air Motor Assembly	
2A	CH210110	1	Spring	
2BB	★	1	Ball Seal	
2CC	★	1	O-Ring	
2D	★	2	Ball Seat	
2DD	CF318028	4	Cap Screw	
2E	★	2	Ball	
2EE	★	1	Conical Spring	
2FF	★	1	Filter	
2G	CH411013	1	Ball Guide	
2H	★	1	Ball	
2L	CH202950SR	1	Relief Valve Assy. (incl. items 9,10,14)	4
2N	DA2686299SR	1	Coupling V-Retainer	
2Z	★	1	Gasket	
5	A8009108SR	1	Washer (incl. items 2A,8,52)	
6	DA5290900SR1	1	Release Guide Assembly (incl. items 2BB,2DD,2EE,2Z,10)	2
7	CH203950SR	1	Hydraulic Cylinder Assembly (incl. items 2D,2E,8,10)	5
8	CB180040	1	Plunger	
9	★	1	Ball Seat	
10	★	4	Gasket	
11	CL166950SR	1	Hydraulic Body Assembly	
14	★	1	Plug	
19	★	1	Back-Up Washer	
24	CF692950W	1	Coupler Assembly (incl. items 2D,2G,2H,10)	3
26	CB108005SR	1	Base	
27	B1320028	2	Screw	
29	CB241218W	1	Treadle	
31	DA1021025-RED	1	Reservoir Assembly	
32	CL164950SR	1	Reservoir Cap (incl. item 19,53)	
34	DA5015118SR	1	Filter Kit	
35	CK352950SR	1	Poppet Guide Assembly	
36	CL163950SR1	1	Coupler Kit	
52	★	1	Rubber Washer	
53	★	1	O-Ring	
54	CK354950SR	1	Air Piston Assembly	
55	CB808041	1	U-Cup	
★ Indicates items included in and available only as part of Pump Repair Kit 90000303K. <b>NOTE:</b> The back-up washer, Item 19 (B1014565) may be purchased separately from Pump Repair Kit 90000303K. Filter Assembly (DA5015118SR) is available as a separate item. <b>NOTE:</b> Changes have been made in the design of the shuttle piston, end cover, and air cylinder that improve air motor performance. The new parts will not work when used with the existing old-style parts. If one of these parts requires replacement, a complete new air motor (DA5816900SR) must be used.				

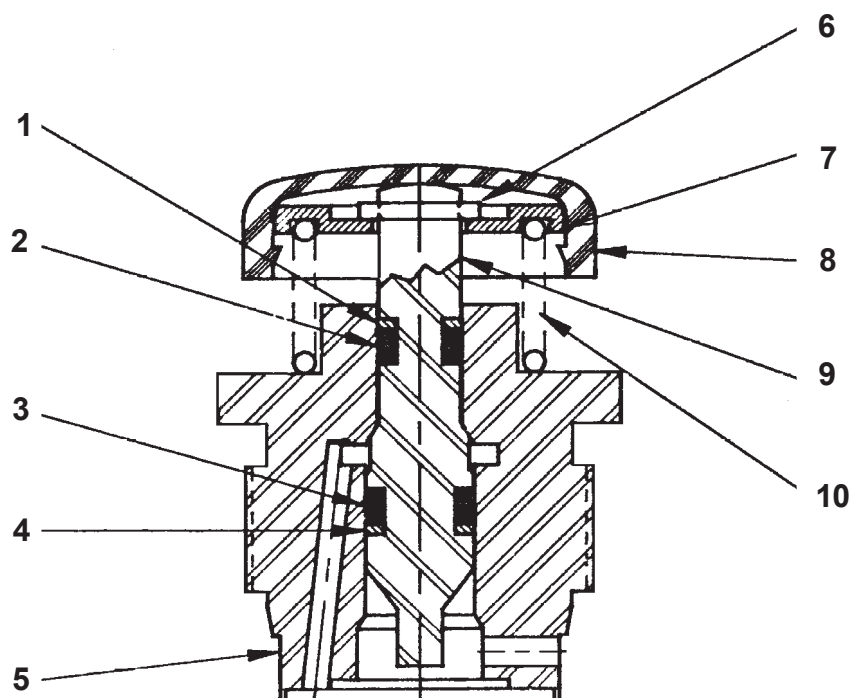
**All replacement air motors are pretested to insure proper performance.**

**NOTE:** Assemble ball guide (Item 2G) with outside chamfer facing ball seat (Item 2D).

**NOTE:** Torque Coupling V-Retainer (Item 2N) to 30-40 in-lbs. [3,4-4,5 Nm].

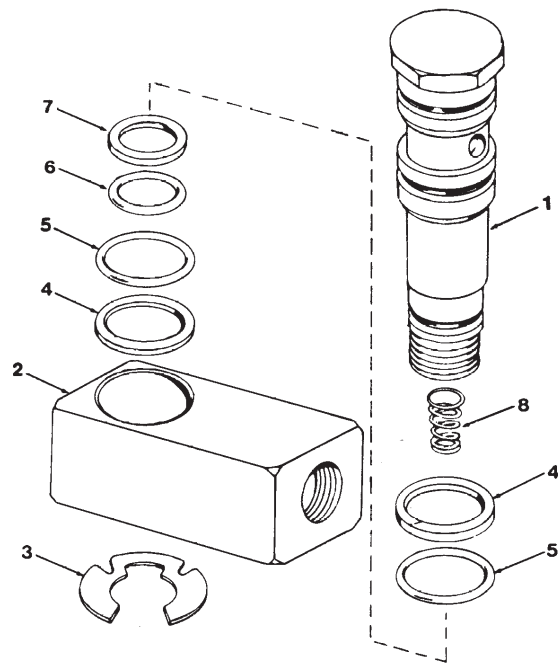
[illegible]

### Figure 1 - Air-Hydraulic Pump



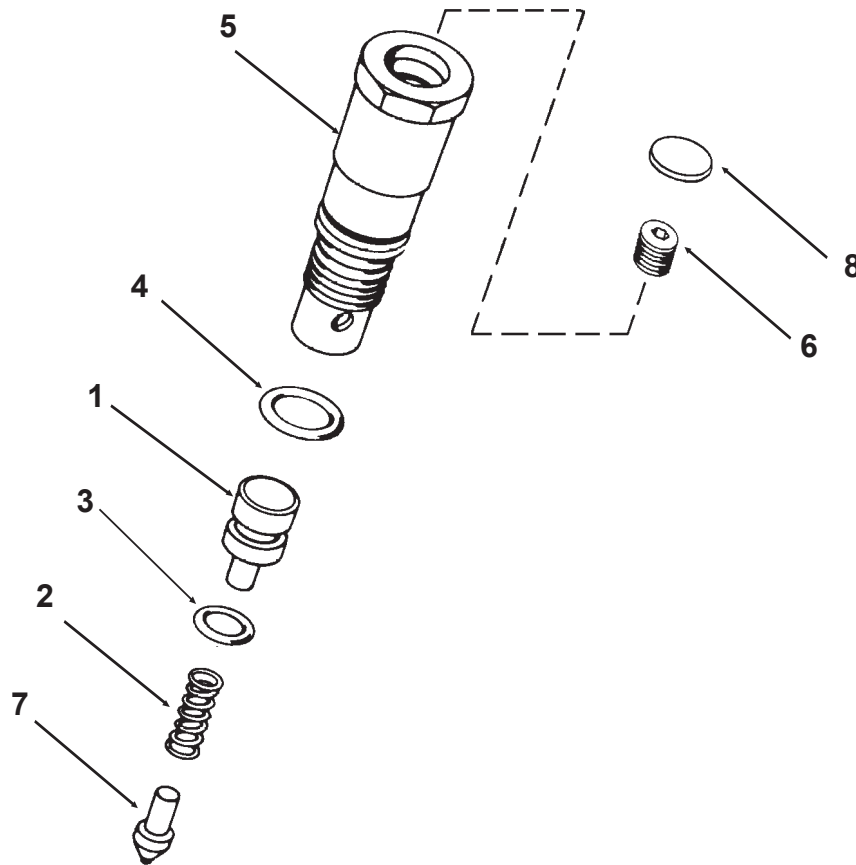
**Figure 2 - Release Plunger**

RELEASE PLUNGER REPAIR PARTS LIST			
Item No.	Part Number	Quantity	Description
1	★	1	Back-Up Washer
2	★	1	O-Ring
3	★	1	O-Ring
4	★	1	Back-Up Washer
5	DA5290900SR1	1	Release Guide Assembly
6	★	1	Retaining Ring
7	DA4848108	1	Spring Washer
8	★	1	Cap
9	DA4832040	1	Release Plunger
10	★	1	Spring
<p>★ Indicates items included in and available only as part of Release Plunger Kit DA4832040KR.</p> <p><b>NOTE:</b> The Release Plunger Repair Kit (DA4832040KR) and Release Guide Assembly (DA5290900SR1) also include items 2BB,2CC,2E,2EE,2Z, and 10 from the Air Pump Assembly (Figure 1).</p> <p><b>NOTE:</b> Repair Kit 90000303K includes (1) DA4832040KR.</p> <p><b>NOTE:</b> Pumps manufactured prior to November, 1991 have a release plunger assembly that uses a roller in place of the cap now being used. The roller (CB923281), dowel pin (CH200061), and spring washer (CH198108) are available for service in Roller Replacement Kit CB923281SR. To replace the release plunger or release body, order a complete assembly (DA5290900SR1).</p>			



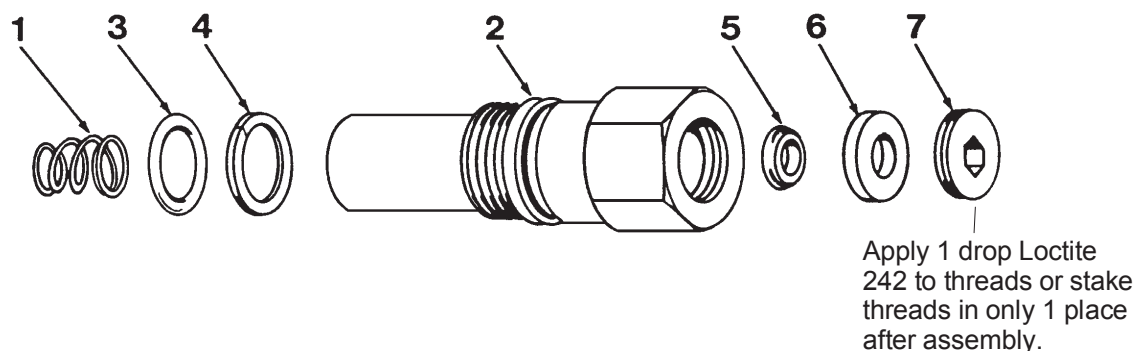
**Figure 3 - Swivel Coupler Assembly**

SWIVEL COUPLER ASSEMBLY PARTS LIST			
Item No.	Part Number	Quantity	Description
1	CJ205416	1	Coupler Stem
2	CJ204190	1	Coupler Body
3	★	1	Retaining Ring
4	★	2	Back-Up Washer
5	★	2	O-Ring
6	★	1	O-Ring
7	★	1	Back-Up Washer
8	★	1	Spring
<p>★ Indicates items included in and available only as part of Swivel Coupler Kit CF692950K1.</p> <p><b>NOTE:</b> The Swivel Coupler Kit (CF692950K) contains items 2D,2H, and 10 from the Air Pump Assembly (Figure 1).</p> <p><b>NOTE:</b> Repair Kit 90000303K includes (1) CF692950K.</p>			



**Figure 4 - Relief Valve Assembly**

RELIEF VALVE ASSEMBLY REPAIR PARTS LIST			
Item Number	Part Number	Quantity	Description
1	A8005007	1	Plug
2	★	1	Spring
3	★	1	O-Ring
4	★	1	O-Ring
5	CH202950W	1	Release Valve Assembly
6	L86028	1	Set Screw
7	CH180950W	1	Ball Guide Assembly
8	★	1	Plug
<p>★ Indicates items included in and available only as part of Relief Valve Repair Kit CH202950K.</p> <p><b>NOTE:</b> The Relief Valve Repair Kit also includes Items 9 and 10 from the Air Pump Assembly, Figure 1.</p> <p><b>NOTE:</b> Relief Valve Repair Kit CH202950K contains two sizes of springs (item 2). Use the spring from the kit that matches the spring removed from the relief valve.</p> <p><b>NOTE:</b> Repair Kit 90000303K includes (1) CH202950K.</p> <p><b>NOTE:</b> Relief valve adjustments should only be performed by an Authorized Service Center utilizing prescribed procedures and proper test equipment.</p>			



**Figure 5 - Hydraulic Cylinder**

HYDRAULIC CYLINDER REPAIR PARTS LIST			
Item Number	Part Number	Quantity	Description
1	★	1	Spring
2	CH203950SR	1	Hydraulic Cylinder Assembly
3	★	1	O-Ring
4	★	1	Back-Up Washer
5	★	1	U-Cup
6	★	1	Back-Up Bearing
7	★	1	Bearing Retainer
<p>★ Indicates items included in and available only as part of Hydraulic Cylinder Repair Kit HCRK1.</p> <p><b>NOTE:</b> HCRK1 is a universal kit and will service any of the three hydraulic cylinders listed.</p> <p><b>NOTE:</b> Hydraulic Cylinder Repair Kit HCRK1 also includes Items 2D,2E, and 10 from the Air Pump Assembly (Figure 1).</p> <p><b>NOTE:</b> Repair Kit 90000303K includes (1) HCRK1.</p> <p><b>NOTE:</b> Apply one drop Loctite #242 to threads, or stake threads in one location only after assembly.</p>			

**PORTO-POWER AND BLACKHAWK AUTOMOTIVE**  
ARE LICENSED TRADEMARKS.

**LINCOLN AUTOMOTIVE**

*St. Louis, Missouri 63120-1578*