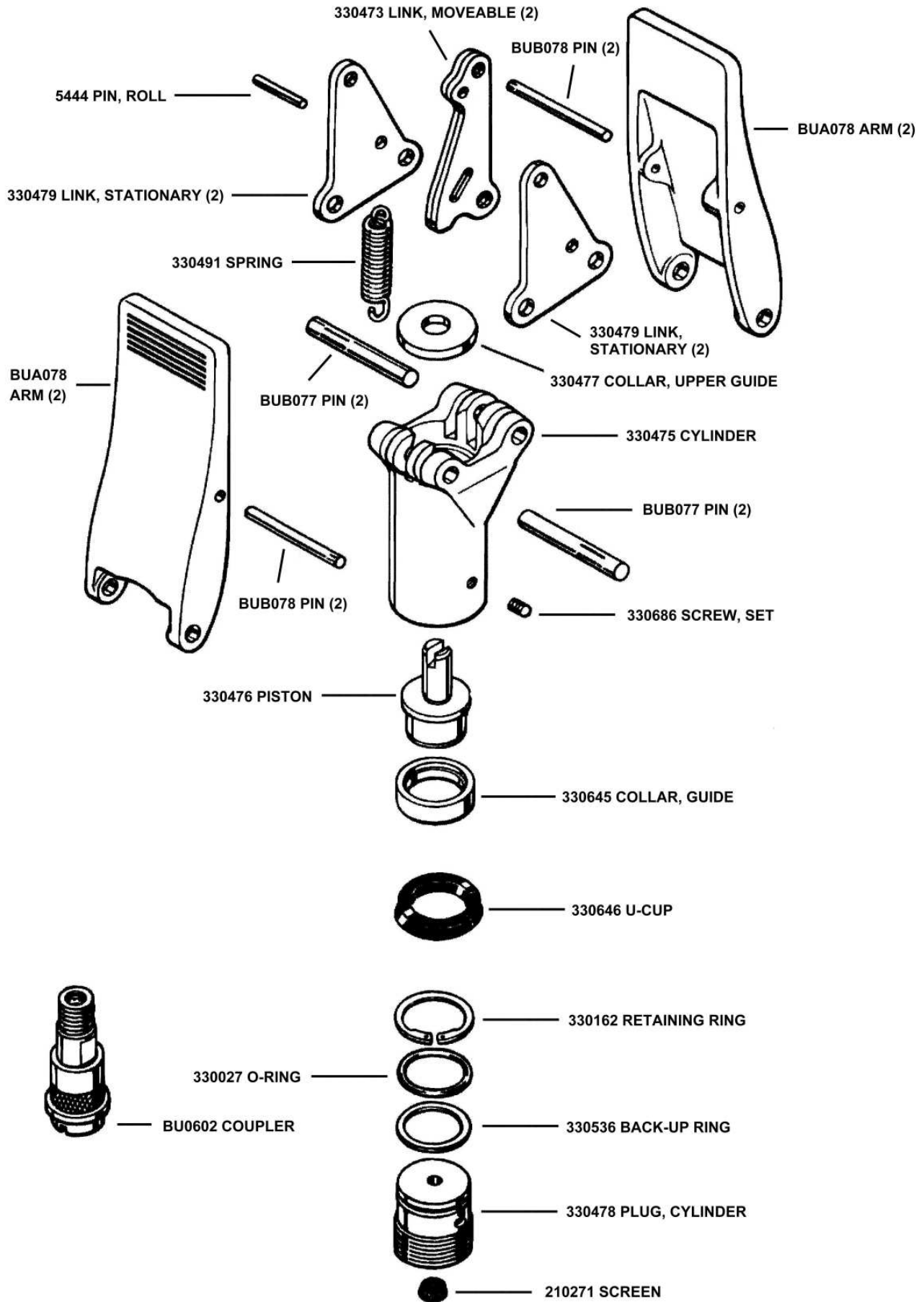


# SM0100 - 4 Ton Hydraulic Spreader



# SM0100 HYDRAULIC SPREADER

## SERVICE INSTRUCTIONS

### DISASSEMBLE:

- 1) Hold tips of spreader arms (BUA078) in vise.
- 2) Place wrench across flats of coupler (BU0602) and remove.
- 3) Remove Screen (210271).
- 4) Remove lock-screw (330686) with hex wrench.
- 5) Remove plug (330478) with a spanner wrench.
- 6) Knock out pin (BUB077) on stationary arm side with a ¼" punch and hammer. Swing cylinder (330475) out of the way.
- 7) Remove piston (330476) by pushing on slotted end of piston.
- 8) Remove retaining ring (330162) from piston.
- 9) Remove "U" cup packing (330646) from piston.
- 10) Remove bronze bushing (330645).
- 11) Clean all parts thoroughly.

### REASSEMBLE:

- 1) Assemble bronze bushing (330645) on piston.
- 2) Assemble "U" cup packing (330646) with flat side against bronze bushing.
- 3) Assemble retaining ring (330162).
- 4) Apply medium consistency, high temperature, bearing grease and slip piston assembly with packing into cylinder until it protrudes through washer (330477). Make sure the slot on piston (330476) is aligned with the links (330473).
- 5) Align pin holes in arms (BUA078) with pin holes in cylinder (330475) and insert pin (BUB077) into holes. DO NOT drive pin into place.
- 6) Push against the bottom of piston (330476) to force piston slot against link (330473).
- 7) Drive arm pin (BUB077) in flush with arms (BUA078).
- 8) Remove O-ring (330027) and backup ring (330536) from plug (330478). Replace in the same order and orientation as removed.
- 9) Insert screen (210271) into plug (330478).
- 10) Apply thread sealant to ram half coupler (BU0602) and start coupler (BU0602) into plug, screw plug into cylinder (330475) by hand as far as possible. *Be careful to avoid mixing sealant with hydraulic fluid by skipping the first three threads of the inserted portion of the coupler.*
- 11) With a wrench across flats on coupler (BU0602) tighten plug (330478) until blind hole inside of plug lines up with set screw hole in cylinder (330475).
- 12) Place set screw (330686) into hole and tighten securely. DO NOT OVER TIGHTEN and break set screw.
- 13) Continue tightening coupler (BU0602) until sure of a good seal between coupler and plug (330478) threads.
- 14) Use hook tool (S-123) to hook return spring (330491) onto pin (BUB077) of fixed arm.
- 15) Attach spreader to pump and test for leaks and operation.