

# SPX POWER TEAM

SPX Corporation  
 2121 West Bridge Street  
 Owatonna, MN 55060 USA  
 Phone: (507) 455-7100  
 Tech. Services: (800) 477-8326  
 Fax: (800) 765-8326  
 Order Entry: (800) 541-1418  
 Fax: (800) 288-7031

International Sales: (507) 455-7150  
 Fax: (507) 455-7122  
 Internet Address:  
<http://www.powerteam.com>

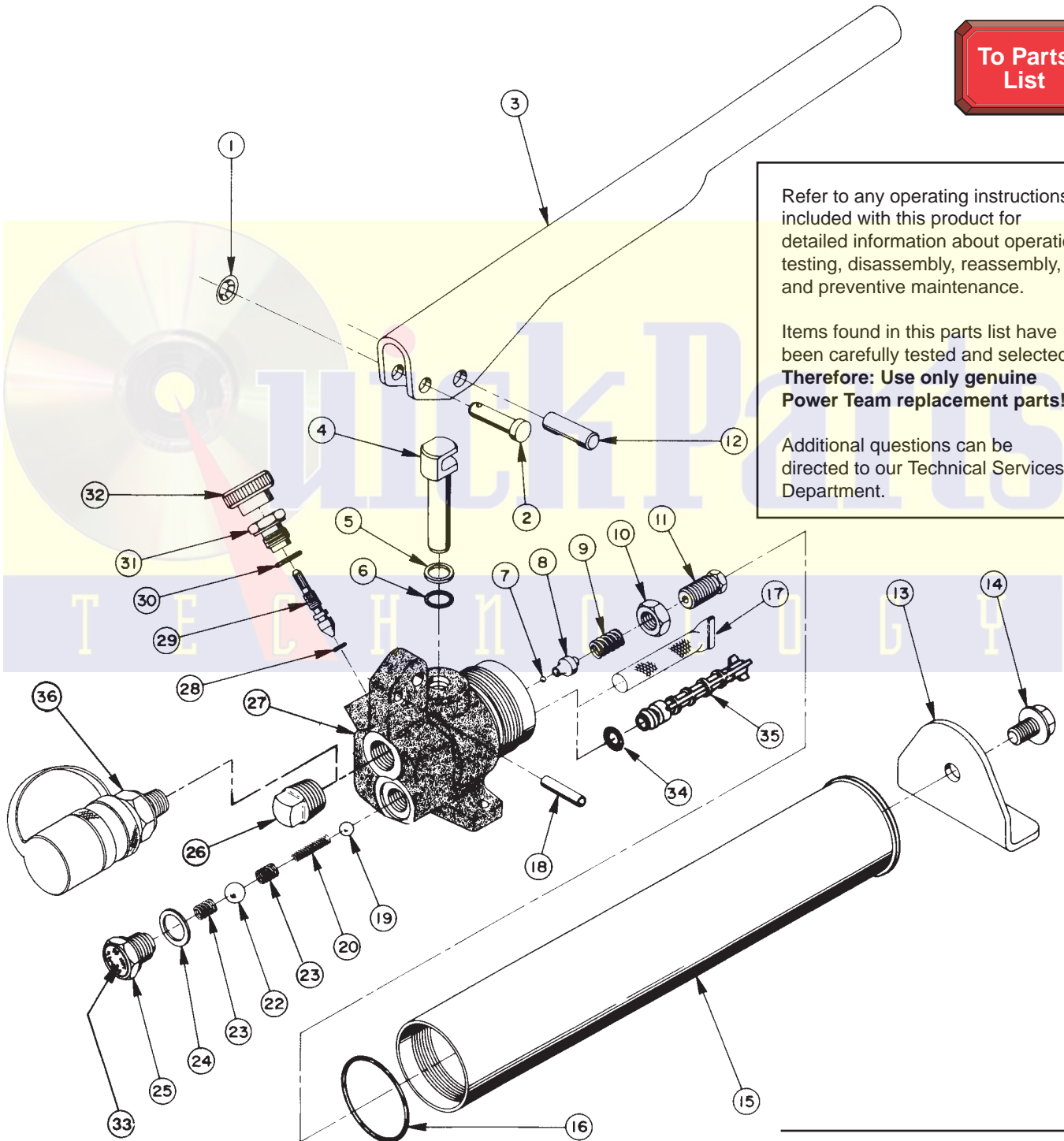
Form No. 100459

## Parts List for:

|            |           |          |
|------------|-----------|----------|
| 201338-TID | P12-DEF   | P12-SML  |
| KMT420209  | P12-G     | P12-SR   |
| P12        | P12P      | P12-VAN  |
| P12-ADDCO  | P12-PFAFF | P12-2000 |
| P12-CMI    | P12-SAUER | P12-3000 |
|            |           | Y20      |

## SINGLE-STAGE HYDRAULIC HAND PUMP

To Parts List



Refer to any operating instructions included with this product for detailed information about operation, testing, disassembly, reassembly, and preventive maintenance.

Items found in this parts list have been carefully tested and selected. **Therefore: Use only genuine Power Team replacement parts!**

Additional questions can be directed to our Technical Services Department.

Sheet No. 1 of 2

Rev. 12 Date: 9 Feb. 2000

# Parts List, Form No. 100459, Back sheet 1 of 2

| Item No. | Part No.  | No. Req'd | Description  |
|----------|-----------|-----------|--|
| 1        | *15390    | 1         | Speed Nut  |
| 2        | *15294    | 1         | Clevis Pin   |
| 3        | 34918WH2  | 1         | Handle (For Y20, P12-PFAFF, P12-2000, P12-3000 & P12-DEF)  |
|          | 34918BL2  | 1         | Handle (For P12-SAUER)   |
|          | 34918OR9  | 1         | Handle (For P12, P12P, P12-ADDCO, P12-VAN, P12-SML & P12-G)  |
|          | 34918BK2  | 1         | Handle (For 201338-TID & P12-CMI)  |
|          | 34918BK7  | 1         | Handle (For P12-DEF)   |
|          | 34918BL9  | 1         | Handle (For KMT420209)   |
|          | 34918GY14 | 1         | Handle (For P12-SR)  |
| 4        | 34877     | 1         | Piston   |
| 5        | †*250611  | 1         | Backup Washer (1/2 x 3/8 x 1/16)   |
| 6        | *15279    | 1         | O-ring (1/2 x 3/8 x 1/16)  |
|          | †19775    | 1         | O-ring (1/2 x 3/8 x 1/16)  |
| 7        | *14443    | 1         | Steel Ball (3/32 dia.)   |
| 8        | 29785     | 1         | Ball Retainer  |
| 9        | *14475    | 1         | Compression Spring (5/16 O.D. x 5/8 Lg.; For all P12 series pumps with a relief valve pressure setting greater than 2,500 PSI)   |
|          | 11221     | 1         | Compression Spring (.24 OD x 1.00 x .05 ws; For P12-ADDCO, P12-SR, P12-2000, and other pumps with a relief valve setting of 2,500 PSI or less except P12P [see below]) |
|          | 12195     | 1         | Compression Spring (1/4 O.D. x 1/2 Lg; for P12P only)  |
|          | 14319     | 1         | Copper Washer<br>(NOT SHOWN; used with #12195; 5/16 x 3/16 x 1/32; for P12P only)  |
| 10       | 10386     | 1         | Hex Jam Nut (3/8-24 UNF)   |
| 11       | 29786     | 1         | Adjusting Nut  |
| 12       | 29787     | 1         | Wrist Pin  |
| 13       | 34876     | 1         | Reservoir Leg (All models except P12-CMI, P12-2000, P12-SAUER, 201338-TID & P12-DEF)   |
|          | 350285    | 1         | Reservoir Leg (For P12-CMI only)   |
|          | 34876-1   | 1         | Reservoir Leg (For P12-SAUER, P12-PFAFF, P12-SR & P12-DEF)   |
|          | 350638    | 1         | Reservoir Leg (For P12-VAN)  |
| 14       | 15273     | 1         | Hex Hd. Cap Screw (Torque to 60/80 in. lbs.)   |
|          | 17147     | 1         | Hex Hd. Cap Screw (For P12-ADDCO, P12-2000, P12-3000 & P12-VAN; Torque to 60/80 in. lbs.)  |
| 15       | 34875     | 1         | Reservoir Tube Ass'y (All models except KMT420209, P12-CMI, 201338-TID, & P12-DEF)   |
|          | 253312    | 1         | Reservoir Assembly (For P12-DEF)   |
|          | 350440    | 1         | Reservoir Assembly (For 201338-TID)  |
|          | 351338    | 1         | Reservoir Assembly (For P12-VAN)   |
|          | 309724WH2 | 1         | Reservoir Assembly (For P12-ADDCO, P12-2000 & P12-3000)  |
|          | 35381     | 1         | Reservoir Tube Ass'y (for KMT420209)   |
|          | -----     | 1         | Reservoir Tube Ass'y (For P12-CMI;<br>Special - See NOTE on sheet 2 of 2)  |
| 16       | *14875    | 1         | O-ring (1-5/8 x 1-1/2 x 1/16)  |
|          | †18983    | 1         | O-ring (1-5/8 x 1-1/2 x 1/16)  |
| 17       | *24789    | 1         | Screen Filter (On pumps manufactured before 7-1-90)  |
| 18       | *10549    | 1         | Roll Pin (3/16 dia. x 7/8 Lg.;<br>For pumps manufactured before 7-10-92)   |
|          | *11916    | 1         | Roll Pin (1/4 dia. x 7/8 Lg.;<br>For all pumps manufactured after 7-10-92)   |
| 19       | *10375    | 1         | Steel Ball (1/4 dia.)  |
| 20       | *10445    | 1         | Compression Spring (5/32 O.D. x 3/4 Lg.)   |
| 22       | *10378    | 1         | Steel Ball (3/8 dia.)  |

Note: Shaded areas reflect last revision(s) made to this form.



Continued -

| Item No. | Part No. | No. Req'd | Description   |
|----------|----------|-----------|---|
| 23       | *10444   | 2         | Compression Spring (3/16 I.D. x 13/32 Lg.)                            |
| 24       | *14874   | 1         | Soft Copper Washer (.700 x 1/2 x 1/32 thk.)                           |
| 25       | 351952   | 1         | Valve Screw (Torque to 30/35 ft. lbs.)                                |
| 26       | 11127    | 1         | Pipe Plug (3/8 NPTF)  |
| 27       | 50632    | 1         | Pump Body (Includes Item 18; For all models except P12-CMI & P12-VAN) |
|          | 64199    | 1         | Pump Body (For P12-CMI & P12-VAN)                                     |
| 28       | *10265   | 1         | O-ring (5/16 x 3/16 x 1/16)   |
|          | †11437   | 1         | O-ring (5/16 x 3/16 x 1/16)   |
| 29       | 29783    | 1         | Stem  |
| 30       | *10300   | 1         | O-ring (5/8 x 15/32 x 5/64)   |
|          | †19091   | 1         | O-ring (5/8 x 15/32 x 5/64)   |
| 31       | 34871    | 1         | Guide   |
| 32       | 29827    | 1         | Knob  |
| 33       | 215907   | 1         | Decal ("DO NOT REMOVE")   |
| 34       | *12557   | 1         | O-ring (11/32 x 7/32 x 1/16)  |
|          | †18973   | 1         | O-ring (11/32 x 7/32 x 1/16)  |
| 35       | *215075  | 1         | Screen Filter   |
| 36       | 9796     | 1         | Ram Half Coupler w/ Dust Cap (for KMT420209)                          |

On pumps  
manufactured  
after 7-1-90

#### PARTS INCLUDED BUT NOT SHOWN

|           |   |   |
|-----------|---|---|
| 16116     | 1 | Patent Decal  |
| 14880     | 1 | Oil Level & Instr. Decal (for Y20)  |
| †205724   | 1 | Viton Seal Decal  |
| *307329   | 1 | Oil Level & Warning Decal (for 201338-TID, P12, P12P, P12-CMI, P12-PFAFF, P12-2000, P12-SAUER, P12-VAN, P12-SML, P12-SR, P12-DEF & P12-G) |
| 307329-CE | 1 | Oil Level & Warning Decal (For P12-SAUER)   |
| 16710     | 1 | Warning Decal (for 201338-TID)  |
| 307330    | 1 | Trade Name Decal (for P12 & P12P)   |
| 16205     | 1 | Trade Name Decal (for 201338-TID)   |
| KMT250376 | 1 | Trade Name Decal (for KMT420209)  |
| 252023    | 1 | Trade Name Decal (for P12-PFAFF)  |
| 11610     | 1 | Handle Grip (for P12-CMI)   |
| 10302     | 1 | O-ring (3/4 x 5/8 x 1/16; for P12-CMI)  |
| 250594    | 1 | Cap Fitting (37° flare; for P12-CMI)  |
| 250605    | 1 | 90° Elbow Fitting (for P12-CMI)   |
| 251123    | 1 | Nut, Hex-Jam (for P12-VAN)  |
| 253234    | 1 | Oil Pivot Pins Decal  |
| 304501    | 1 | Pump Guard (For P12-G)  |

To  
Drawing

Part numbers marked with an asterisk (\*) are contained in Standard Repair Kit No. 300260.

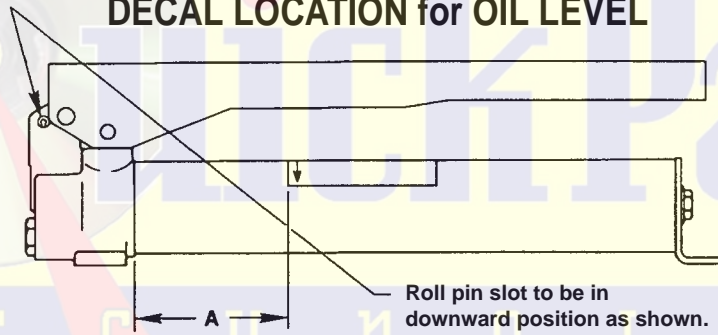
Part numbers marked with a dagger (†) are contained in Viton Seal Kit No. 300507.

**NOTE: Consult the manufacturer when ordering a reservoir for pump model P12-CMI.**

### RELIEF VALVE SETTING

| Catalog Number   | Relief Valve Setting |
|--|----------------------|
| P12, Y20, 201338-TID,<br>KMT420409, P12-CMI,<br>P12-PFAFF, P12-SAUER,<br>P12-G | 10,000 PSI           |
| P12-SML  | 7,250 PSI            |
| P12-DEF  | 3,800 PSI            |
| P12-3000, P12-VAN  | 3,000 PSI            |
| P12-ADDCO, P12-2000  | 2,000 PSI            |
| P12-SR   | 1,100 PSI            |
| P12-P  | 1,000 PSI            |

### DECAL LOCATION for OIL LEVEL



| Catalog Number  | Decal # | Dimension "A" |
|---|---------|---------------|
| Y20   | 14880   | 3-3/32"       |
| P12, P12-SAUER,<br>201338-TID, P12-PFAFF,<br>KMT420209, P12-2000,<br>P12-SML, P12-SR,<br>P12-DEF, P12-G | 307329  | 1/2"          |

Models P12-CMI, P12-P & P12-VAN use the warning portion of decal #307329.  
The fill information and relief valve information must be trimmed off.