



A division of SPX Corporation
 655 Eisenhower Drive
 Owatonna, MN 55060-1171 USA
 Phone: (507) 455-7000
 Tech. Serv.: (800) 533-6127
 Fax: (800) 955-8329
 Order Entry: (507) 455-1480
 Fax: (800) 283-8665
 International Sales: (507) 455-7223
 Fax: (507) 455-7746

POWER TEAM

A division of SPX Corporation
 2121 West Bridge Street
 Owatonna, MN 55060 USA
 Phone: (507) 455-7100
 Tech. Serv.: (800) 477-8326
 Fax: (800) 765-8326
 Order Entry: (800) 541-1418
 Fax: (800) 288-7031
 International Sales: (507) 455-7150
 Fax: (507) 455-7122

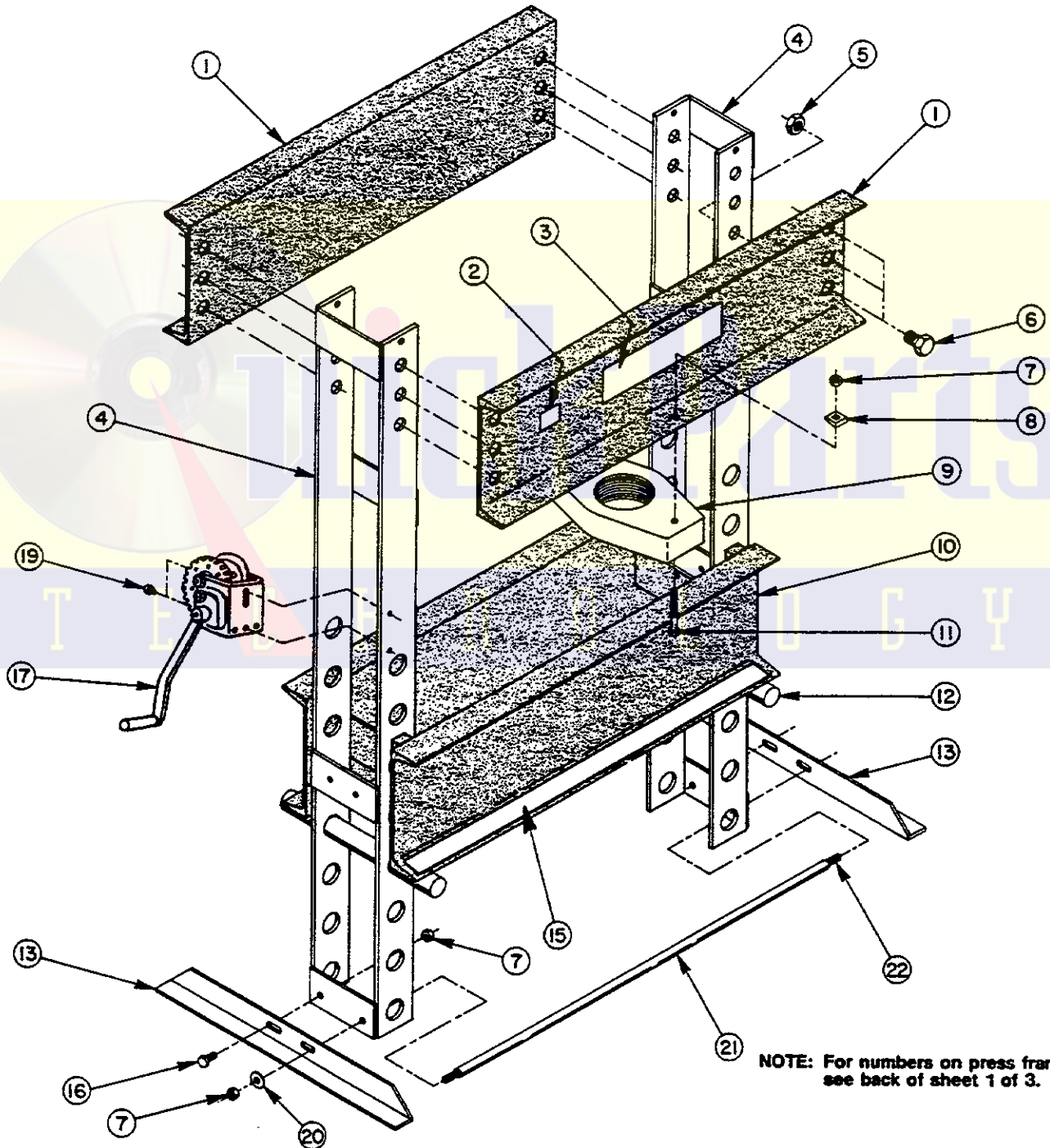
Form No. 100615

Parts List

for:	014-00094	1852
	014-00095	SPA556
	1850	SPE556
	1851	SPM556

Shop Press

Max. Capacity: 55 Tons



NOTE: For numbers on press frame only, see back of sheet 1 of 3.

Sheet No. 1 of 3

Issue Date: Rev. 9-1-95

Parts List

Item No.	Part No.	No. Req'd	Description
1	41751-BL2	2	Upper Bolster (for 1850, 1851, & 1852)
	41751-OR9	2	Upper Bolster (for SPA556, SPE556, & SPM556)
	41751-RE2	2	Upper Bolster (for 014-00094, 014-00095)
2	205329	1	Part Number Decal (for 014-00094)
	205330	1	Part Number Decal (for 014-00095)
3	304984	1	Trade Name Decal (for 1850, 1851, 1852)
	36585	1	Trade Name Decal (for SPA556, SPE556, & SPM556)
	12768	1	Trade Name Decal (for 014-00094, 014-00095)
4	52461	2	Upright
5	10401	12	Jam Nut
6	15081	12	Cap Screw (#1-8 UNC x 1-1/2 lg.)
7	10208	6	Nut (1/2-13 UNC)
8	10610	2	Bevel Washer (for 1/2" bolt)
9	52458	1	Ram Mounting Plate
10	61049-BL2	1	Lower Bolster (for 1850, 1851, & 1852)
	61049-OR9	1	Lower Bolster (for SPA556, SPE556, & SPM556)
	61049-RE2	1	Lower Bolster (for 014-00094, 014-00095)
11	10093	2	Cap Screw (1/2-13 UNC x 4" lg.)
12	303501	2	Bolster Pin
13	304485	2	Foot Angle
15	46909	1	Warning Decal
16	10079	2	Cap Screw (1/2-13 UNC x 1" lg.)
17	18895-1	1	Winch
19	12368	2	Cap Screw (3/8-16 UNC x 1/2 lg.)
20	10586	2	Washer (for 1/2" bolt)
21	211990	1	Spacer
22	211991	1	Threaded Rod

PARTS INCLUDED BUT NOT SHOWN

52457	1	Hydraulic Cylinder (see Form #100386)
310051	1	Made In USA Decal (for SPA556, SPE556, & SPM556)
309956	1	Made In USA Decal (for 1850, 1851, & 1852)

Press Frame only	Used On
61309	1850, 1851, 1852
211593	SPA556, SPE556, SPM556
211750	014-00094, 014-00095

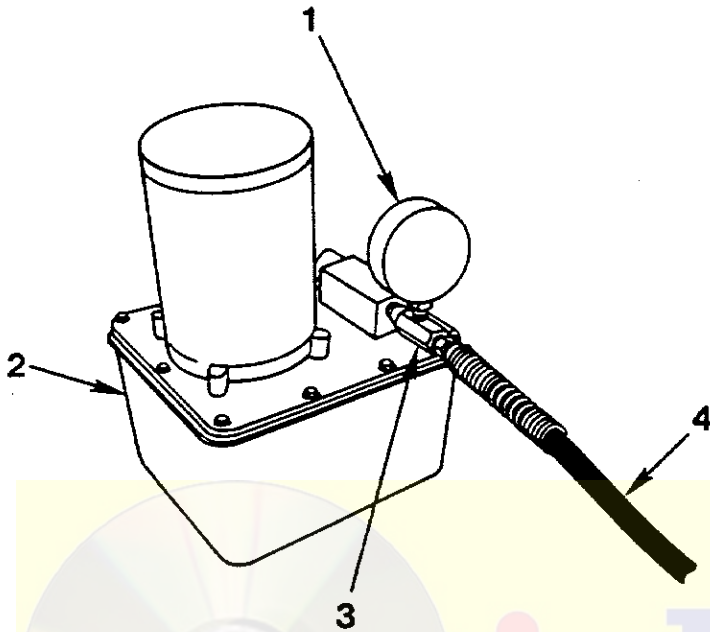
Refer to any operating instructions included with the product for detailed information about operation, testing, disassembly, reassembly, and preventive maintenance.

Items found in this parts list have been carefully tested and selected. **Therefore: Use only genuine replacement parts!**

Additional questions can be directed to our Technical Services Department.

PE172 or 4044 ELECTRIC PUMP

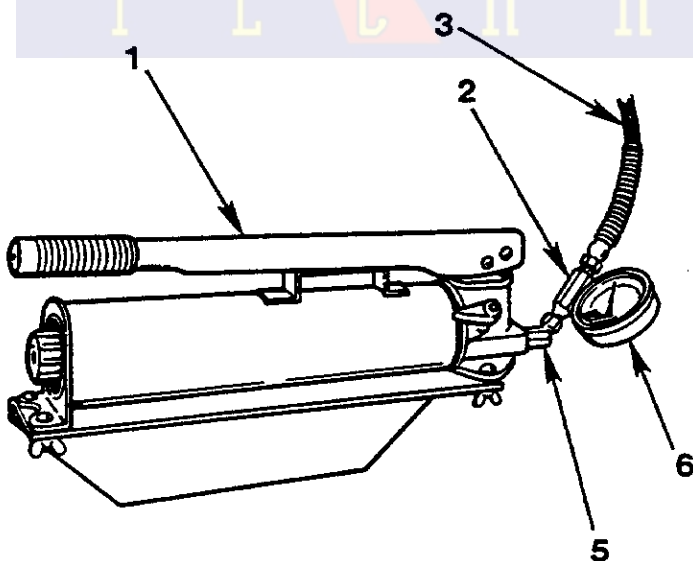
(used on 1852 or SPE556)



Item No.	Part No.	No. Req'd	Description
1	9069	1	Gauge
2	4044	1	Electric Pump <i>(for 1852; see Form #100577)</i>
	PE172	1	Electric Pump <i>(for SPE556; see Form #100577)</i>
3	9670	1	Tee Adapter
4	9776	1	Hydraulic Hose (6 ft.)

4016, P159, or 60614 HAND PUMP

(used on 1850, 014-00095, or SPM556)



Item No.	Part No.	No. Req'd	Description
1	4016	1	Hand Pump <i>(for 1850; see Form #100706)</i>
	P159	1	Hand Pump <i>(for SPE556; see Form #101403)</i>
	61821	1	Hand Pump <i>(for 014-00095; see Form #100706)</i>
2	9670	1	Tee Adapter
3	9776	1	Hydraulic Hose (6 ft.)
5	10648	1	45° Elbow
6	9069	1	Gauge <i>(for 1850 & SPM556)</i>
	16457	1	Gauge <i>(for 014-00096)</i>

Note: Shaded areas reflect last revision(s) made to this form.

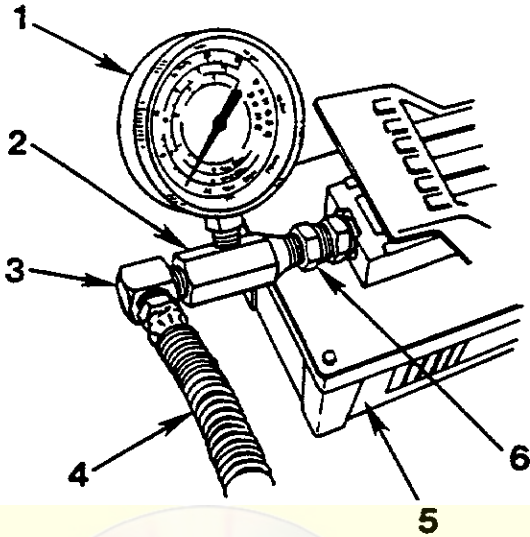
Sheet No. 2 of 3

Issue Date: Rev. 9-1-95

Parts List

4020, 203398, & PA6 AIR PUMP

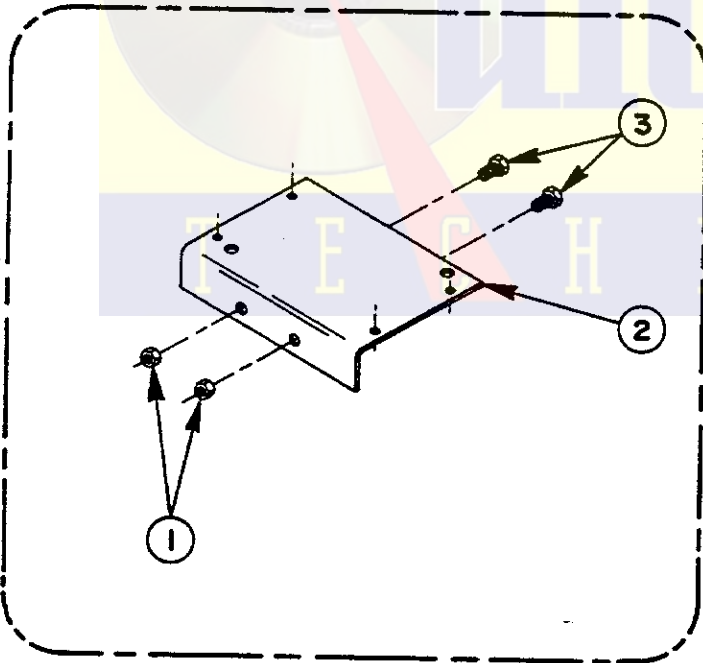
(used on 1851, 014-00094, or SPA556)



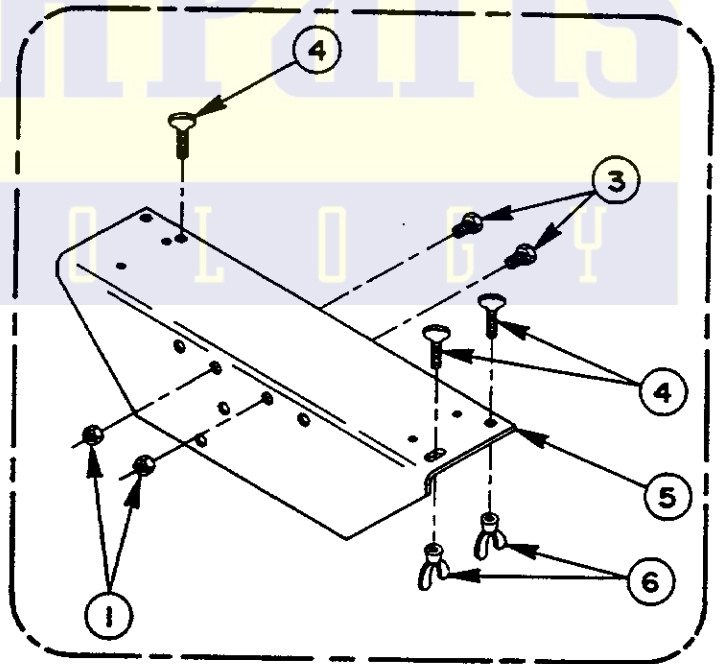
Item No.	Part No.	No. Req'd	Description
1	9069	1	Gauge (for 1850 & SPA556)
	16457	1	Gauge (for 014-00095)
2	9670	1	Tee Adapter
3	10474	1	90° Elbow
4	9776	1	Hydraulic Hose (6 ft.)
5	4020	1	Air Pump (for 1852; see Form #100611)
	203398	1	Air Pump (for 014-00094; (see Form #100611)
	PA6	1	Air Pump (for SPE556; (see Form #100611)
6	10469	1	Straight Fitting

PUMP MOUNTING BRACKETS

ELECTRIC PUMP



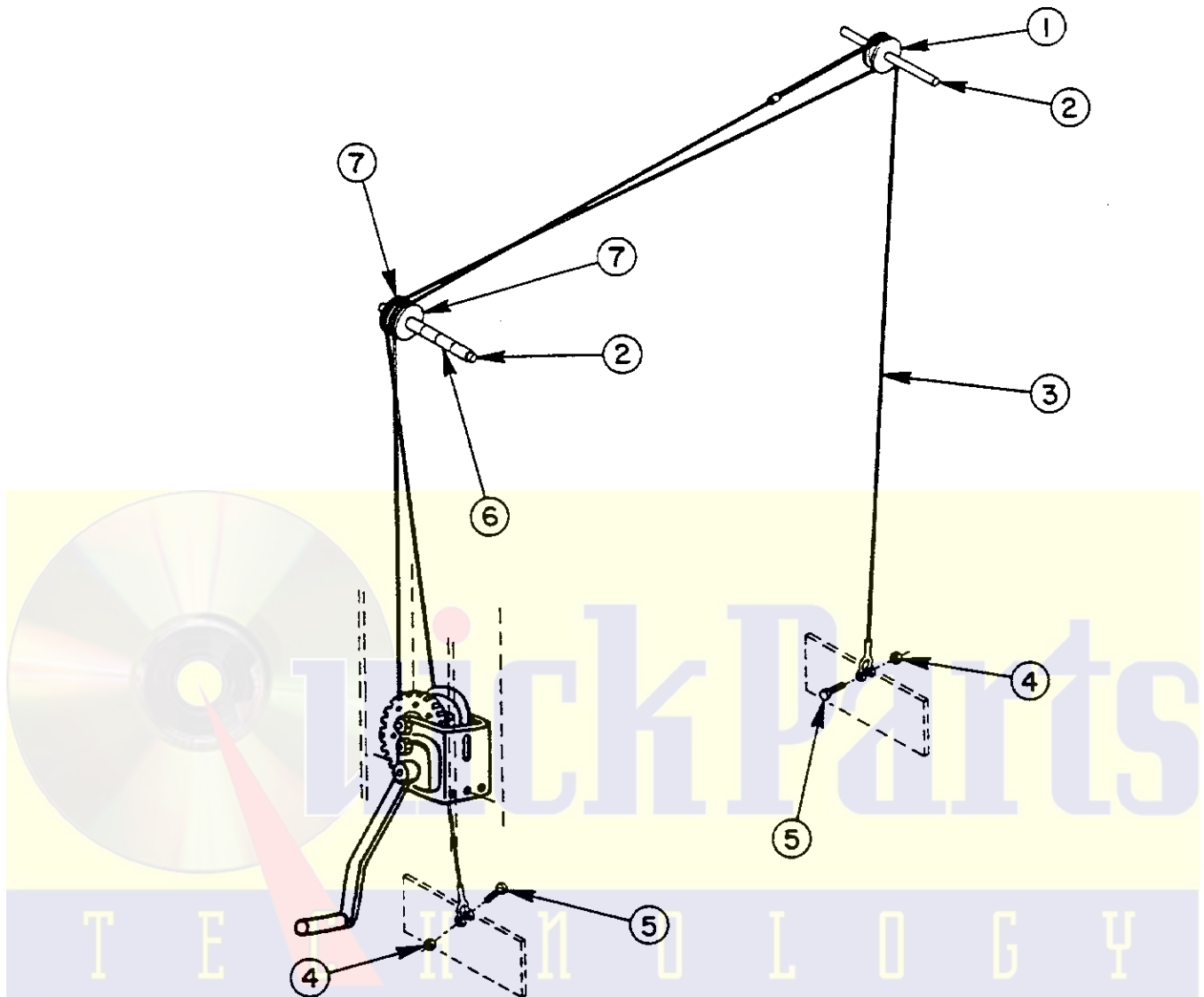
HAND PUMP



Item No.	Part No.	No. Req'd	Description
1	10204	2	Nut (3/8-16 UNC)
2	40864	1	Electric Pump Mounting Bracket
3	10046	2	Cap Screw (3/8-16 UNC x 3/4" lg.)
4	12680	3	Thumb Screw
5	42733-WH2	1	Hand Pump Mounting Bracket
6	12029	3	Wing Nut

NOTE: The air pump version of this shop press does not have a mounting bracket.

CABLE ASSEMBLY



Item No.	Part No.	No. Req'd	Description
1	200785	1	Pulley
2	200056	2	Pulley Axle
3	45999	1	Cable
4	12809	2	Self-locking Nut
5	10019	2	Cap Screw (1/4-20 UNC x 1-1/4 lg.)
6	206680	4	Spacer
7	29695	2	Pulley