



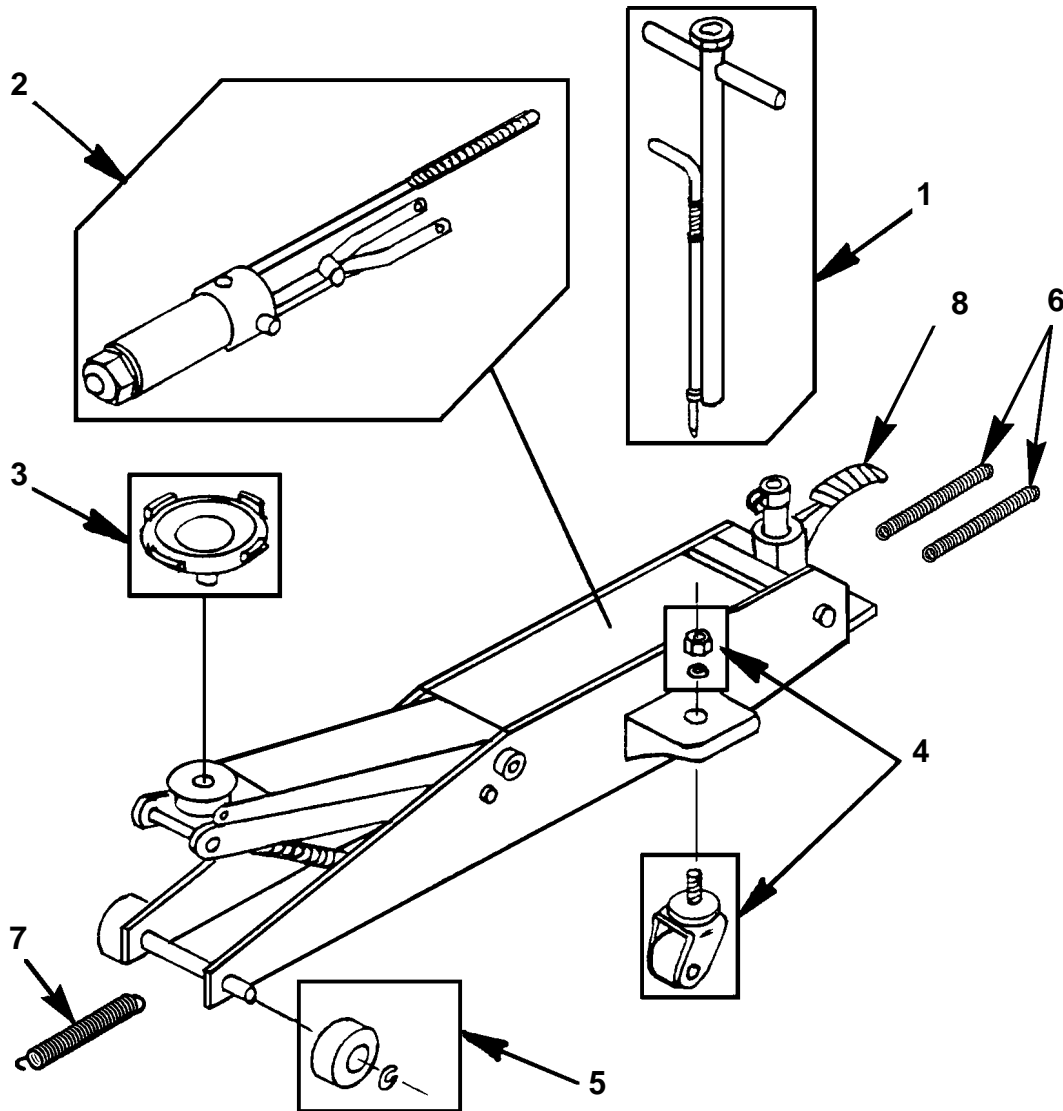
SPX Corporation
 655 Eisenhower Drive
 Owatonna, MN 55060-0995 USA
 Phone: (507) 455-7000
 Tech. Serv.: (800) 533-6127
 Fax: (800) 955-8329
 Order Entry: (800) 533-6127
 Fax: (800) 283-8665
 International Sales: (507) 455-7290
 Fax: (507) 455-7063

**Parts List &
 Operating Instructions
 for:**

1510

Service Jack

Max. Capacity: 10 Tons



Item No.	Part No.	No. Req'd	Description
1	311375-1	1	Jack Handle
2	311375-2	1	Power Unit
3	311375-3	1	Saddle
4	311375-4	1	Rear Wheel
5	311375-5	1	Front Wheel
6	311375-7	2	Foot Pedal Return Spring
7	311375-8	1	Lift Arm Return Spring
8	311374-9	1	Foot Pedal

Replacement Parts

311375-6	1	Seal Kit (not shown)
----------	---	----------------------

Shaded area reflects the last revision made to this form.

Sheet No. 1 of 2

Issue Date: Rev. 11-9-98

Safety Precautions

- ⚠ Caution:** To help prevent personal injury and damage to equipment,
- Read, understand, and follow all instructions, including the ANSI B30.1 safety code for jacks. Before using the service jack to lift a vehicle, refer to the vehicle service manual for recommended lifting surfaces on the vehicle chassis.
 - Wear eye protection that meets ANSI Z87.1 and OSHA standards.
 - Inspect the jack before each use; do not use the jack if it's damaged, altered, or in poor condition.
 - Use the jack for jacking purposes only.
 - Never exceed the rated lifting capacity of the jack.
 - Only use the jack on a hard level surface. The jack must be free to roll without any obstructions while lifting or lowering the vehicle. The wheels of the vehicle must be in the straight-ahead position, and the hand brake must be released.
 - Center the axle on the jack saddle. Off-center loads can damage seals and cause jack failure.
 - Lift only dead weight.
 - Stay clear of lifted loads. Use approved safety stands to support the axles before making repairs.
 - Do not adjust the safety valve.
 - Lower the jack slowly and carefully while watching the position of the jack saddle.
 - Use only approved hydraulic fluid (Chevron AW Hydraulic Oil MV or equivalent). The use of alcohol, hydraulic brake fluid, or transmission oil could damage seals and result in jack failure.

This guide cannot cover every situation, so always do the job with safety first.

Setup

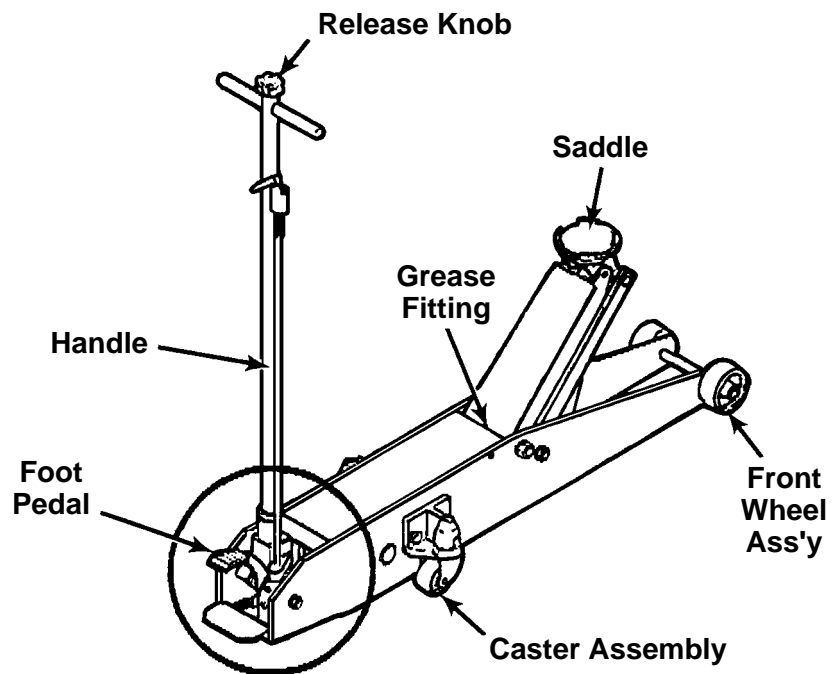
Assembling the Handle

1. Loosen the bolt on the handle socket.
2. Insert the handle.
3. Torque the bolt to 150-200 in. lbs.

Bleeding Air from the Service Jack

Air can accumulate within a hydraulic system during shipment or after prolonged use. This entrapped air causes the jack to respond slowly or feel "spongy." To remove the air:

1. Open the valve by turning the release knob all the way counterclockwise (CCW).
2. Release the hand brake and pump the jack handle six full strokes.
3. Close the valve by turning the release knob all the way clockwise (CW).
4. Pump the jack handle or foot pedal until the lift arm is fully extended.
5. Lower the lift arm by turning the release knob all the way CCW. If the jack does not immediately respond, repeat Steps 2-4.



Operating Instructions

1. Close the release valve by turning the release knob clockwise (CW) as far as it will go.
2. Position the jack under the vehicle. **Important: Use the vehicle manufacturer's recommended lifting points on the chassis.**
3. Pump the jack handle or foot pedal until the saddle touches the vehicle. Check the placement of the saddle lugs. Finish raising the vehicle.
4. Place approved safety stands under the vehicle at points that will provide stable support. Before making repairs, lower the vehicle onto the safety stands by SLOWLY and carefully turning the release knob counterclockwise (CCW).

Preventive Maintenance

Important: Dirt is the greatest single cause of failure in hydraulic units. Keep the service jack clean and well lubricated to prevent foreign matter from entering the system. If the jack has been exposed to rain, snow, sand, or grit, it must be cleaned before it is used.

1. Store the jack in a well-protected area where it will not be exposed to corrosive vapors, abrasive dust, or any other harmful elements.
2. Regularly lubricate the moving parts.
3. Replace the oil in the reservoir at least once per year. To check the oil level, place the service jack on level ground and lower the lift arm completely. Remove the rubber filler plug. The oil level should be within 3/8" of the filler plug hole. If necessary, add approved anti-wear hydraulic jack oil, and install the filler plug again. **Important: The use of alcohol, hydraulic brake fluid, detergent motor oil, or transmission oil could damage the seals and result in jack failure.**
4. Inspect the jack before each use. Take corrective action if any of the following problems are found:
 - a. Cracked or damaged housing
 - b. Excessive wear, bending, or other damage
 - c. Leaking hydraulic fluid
 - d. Scored or damaged piston rod
 - e. Malfunctioning swivel heads or adjusting screws
 - f. Loose hardware
 - g. Modified or altered equipment

Troubleshooting Guide

Repair procedure must be performed in a dirt-free environment by qualified personnel who are familiar with this equipment.

Trouble	Cause	Solution
Jack does not lift	<ol style="list-style-type: none"> 1. Release valve is open 2. Low/no oil in reservoir 3. Air-locked system 4. Load is above capacity of jack 5. Delivery valve and/or bypass valve not working correctly 6. Packing worn out or defective 	<ol style="list-style-type: none"> 1. Close release valve 2. Fill with oil and bleed system 3. Bleed system 4. Use correct equipment 5. Clean to remove dirt or foreign matter. Replace oil. 6. Replace power unit
Jack lifts only partially	<ol style="list-style-type: none"> 1. Too much or not enough oil 	<ol style="list-style-type: none"> 1. Check oil level
Jack advances slowly	<ol style="list-style-type: none"> 1. Pump not working correctly 2. Leaking seals 	<ol style="list-style-type: none"> 1. Replace power unit 2. Replace power unit
Jack lifts load, but doesn't hold	<ol style="list-style-type: none"> 1. Cylinder packing is leaking 2. Valve not working correctly (suction, delivery, release, or bypass) 3. Air-locked system 	<ol style="list-style-type: none"> 1. Replace power unit 2. Inspect valves. Clean and repair seat surfaces. 3. Bleed system
Jack leaks oil	<ol style="list-style-type: none"> 1. Worn or damaged seals 	<ol style="list-style-type: none"> 1. Replace power unit
Jack will not retract	<ol style="list-style-type: none"> 1. Release valve is closed 	<ol style="list-style-type: none"> 1. Open or clean release valve
Jack retracts slowly	<ol style="list-style-type: none"> 1. Cylinder damaged internally 2. Link section is binding 	<ol style="list-style-type: none"> 1. Send jack to OTC authorized service center for repair 2. Lubricate link section