

Operating Instructions Manual

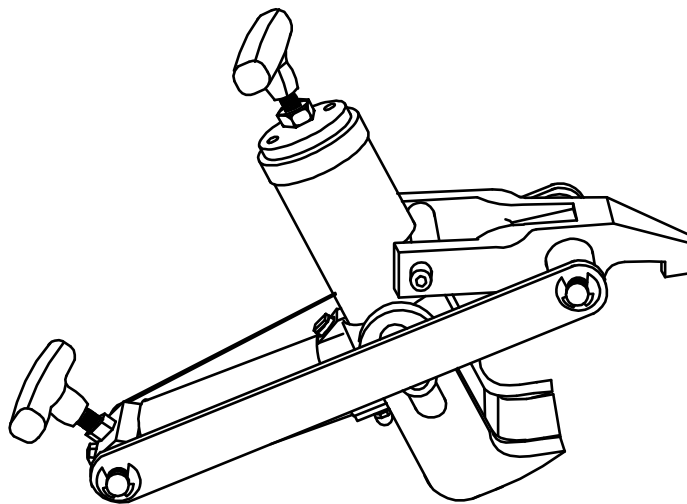


Hydraulic Portable Bead Breaker

Model: 22910

Capacity: 5 Ton

 Not for use on split rim / multi-piece rims!



This is the safety alert symbol. It is used to alert you to potential personal injury hazards. Obey all safety messages that follow this symbol to avoid possible injury or death.



ADVERTENCIA

- Leer, comprender, y seguir las instrucciones antes de utilizar el aparato.
- El manual de instrucciones y la información de seguridad deben estar comunicado en lengua del operador antes del uso.
- No seguir estas indicaciones puede causar daños personales o materiales.



WARNING

- Study, understand, and follow all instructions provided with/on this product before use.
- Failure to heed the instructions may result in personal injury and/or property damage.

SFA Companies
<http://www.omegalift.com>

Made in China
22910-M0 11/07

Save these instructions. For your safety, read, understand, and follow the information provided with and on this product. The owner and operator shall have an understanding of this product and safe operating procedures before attempting to use. Instructions and safety information shall be conveyed in the operator's native language before use of this jack is authorized. Make certain that the operator thoroughly understands the inherent dangers associated with the use and misuse of the product. If any doubt exists as to the safe and proper use of this product, remove from service immediately. **Inspect before each use.** Do not use if broken, bent, cracked, damaged or missing parts (including labels) are noted. The owner and operator shall be aware that use and repair of this product may require special skills and knowledge. It is recommended that an annual inspection be done by qualified personnel. Labels and Operator's Manuals are available from manufacturer.

PRODUCT DESCRIPTION

The Omega Hydraulic Bead Breaker is designed to work on most rims up to 26". It is expressly intended to be used as an aid in breaking the bead seal between a tire and it's one piece wheel for the purpose of resealing bead seal, replacement of tire or wheel, replacing tire valve, tire tube etc. Bead breaker works directly on the bead of the tire and will not damage the tire if used correctly.

⚠️ NEVER use this bead breaker on split rim / multi-piece wheel assemblies! **DO NOT** use this device on an inflated tire! **Remove** tire from vehicle and **deflate** completely before attaching bead breaker to wheel.

SPECIFICATIONS

Model	Capacity	Rated Pressure	Product Size (L x W x H)	Max. Rim Size	Oil Capacity	Net Weight
22910	5 Ton	10,000 psi	16-7/8" x 5-1/2" x 12-3/4"	26"	250 mL	34 lb.

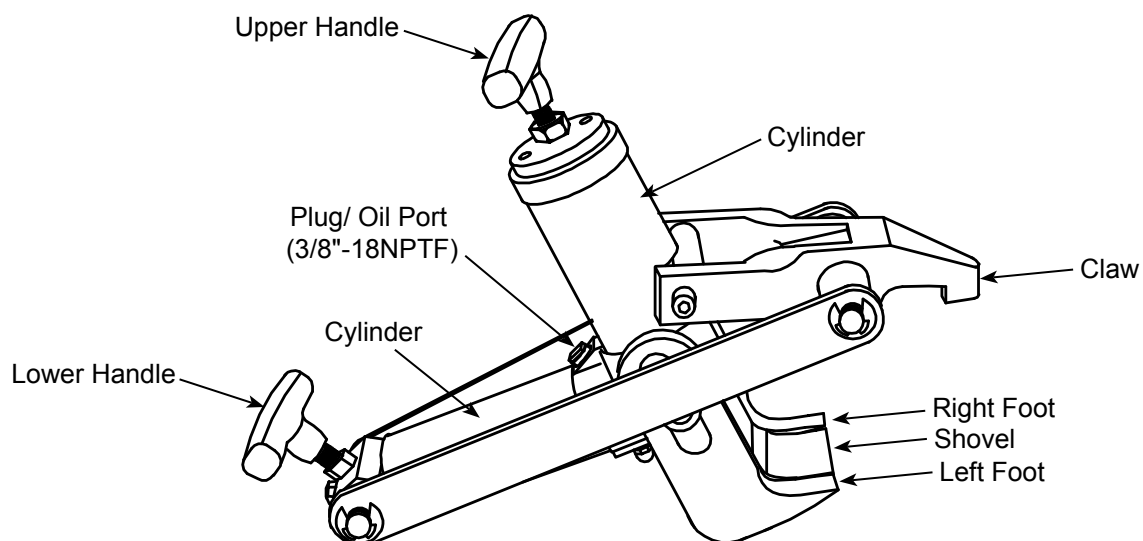


Figure 1 - Model 22910 Components

BEFORE USE

1. Verify that the product and the application are compatible, if in doubt call Omega Technical Service (888) 332-6419.
2. Before using this product, read the operator's manual completely and familiarize yourself thoroughly with the product, its components and recognize the potential hazards associated with its use.
3. Replace worn or damaged parts and assemblies with factory authorized replacement parts only. Lubricate as instructed in Maintenance Section.
4. Use adequate eye protection when operating or near this equipment.

SET UP

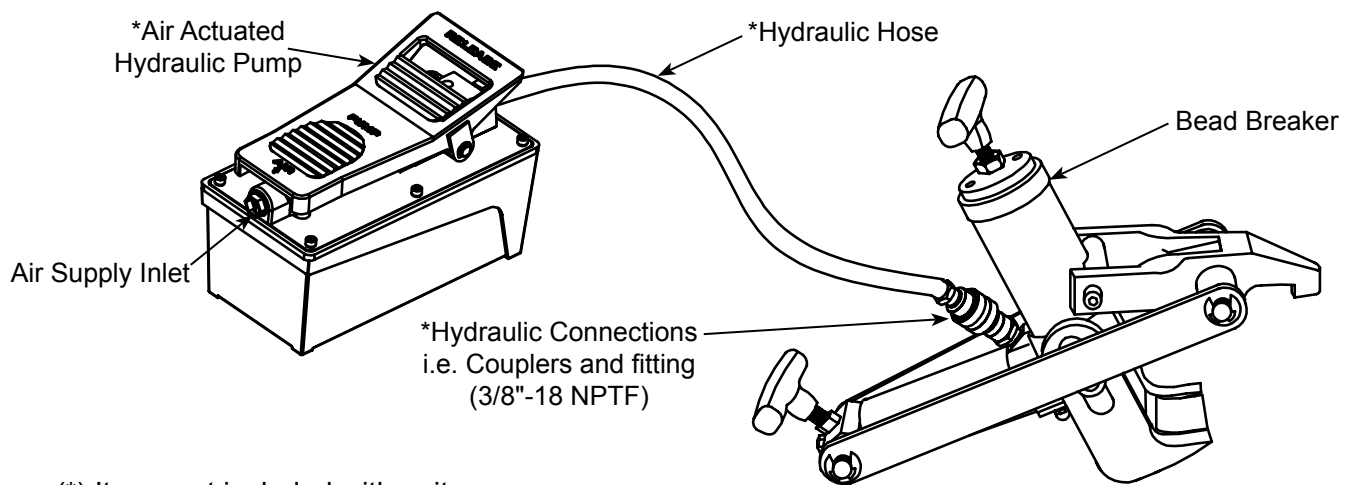
(Refer to Figure 1 & 2)

1. Remove the plug on oil port, connect 3/8" NPTF hydraulic connection to oil port, i.e. coupler, hydraulic hose, fitting etc. Ensure the oil ports and thread connections are clean before connecting to the hydraulic system.

NOTICE Always secure threaded connections with non-hardening pipe thread compound. Take care not to introduce compound into port orifices. Tighten securely to prevent accidental removal of components while in use.

2. Connect the hydraulic connection to hydraulic pump.
3. Install a pressure gauge to monitor the system pressure.

! **DO NOT** exceed rated pressure of 10,000 psi.



(*) Items not included with unit

Figure 2 - Typical Installation Illustration

OPERATION

NOTICE For best result, use an approved tire bead lubricant before removing or installing tire on rim.

1. Remove the wheel from the vehicle and secure on a suitable work surface. **Fully deflate the tire**, remove valve core, and all balance weights.
2. Hold and position the bead breaker under the rim flange. Position the claw on the inner part of the rim, with the bead breaker feet against the outer part of the rim (Refer to Figure 3).
3. Operate the pump to close the claw portion and simultaneously press against the bead surface. To stop or hold, simply cease pump operation.
4. With the claw pushing against the inner part of the rim, the shovel and feet push against the lateral ring and the bead of the tire.
5. Continue operating the pump until the bead separates from the tire rim surface.
6. To release, simply release the hydraulic pressure of pump by opening the release valve on the pump or if a treadle pump, actuate the release pedal.
7. Continue this operation around both outboard and inboard sides of the rim until the bead is free.

DANGER

To avoid serious injury or death:

- **NEVER** use this device on split rims / multi-piece rims!
- **REMOVE** tire from vehicle and **deflate** completely **before** attaching bead breaker to tire / wheel!

WARNING

- **Study, understand, and follow** all instructions provided with/on this product before use.
- **Do not** exceed rated capacity or rated pressure.
- Properly secure and support vehicle before removing the tires.
- **Always** wear protective gear and clothing.
- Ensure that the wheel and tire are securely supported and positioned before breaking the bead.
- **Never** attempt to install or mount any tire and rim that are mismatched.
- **Keep hands away** from pinch and crush points that can be created during operation.
- Keep hydraulic equipment away from flames and heat.
- Use only manufacturer recommended hydraulic oil.
- **Do not** alter or modify this product.
- Failure to heed these markings may result in personal injury and/or property damage.



Figure 3 - Operating Illustration

MAINTENANCE

Important: Use only good grade hydraulic oil. **Do not** mix different types of fluid and **NEVER** use brake fluid, turbine oil, transmission fluid, motor oil or glycerin. Improper fluid can cause premature failure of the jack and the potential for sudden and immediate loss of load. Mobil DTE 13M or equivalent recommended.

Inspect the bead breaker before every use for cracks or physical damages, leaks, worn or missing parts. Do not use the bead breaker with damaged or missing parts, or oil leaks.

Lubrication

A periodic coating of light lubricating oil to pivot points, axles and hinges will help to prevent rust.

Cleaning

1. Keep the hydraulic system as free of dirt as possible. When not in use, couplers or connections must be sealed with dust covers.
2. Periodically check the bead breaker for signs of rust or corrosion. Clean as needed and wipe with an oily cloth.

Storage

When not in use, store the bead breaker with cylinder fully retracted.

TROUBLESHOOTING GUIDE

The following information is intended as an aid in determining if problem exists. For repair service, contact service center in your area.

Symptom	Possible Causes	Corrective Action
Bead breaker not able to grip the rim tightly.	<ul style="list-style-type: none">• Oversize rim• Tire is inflated	<ul style="list-style-type: none">• Do not use on rims greater than 26"• Completely deflate the tire
Erratic action	<ul style="list-style-type: none">• External leakage• Sticking or binding components	<ul style="list-style-type: none">• Contact service center
Bead breaker not responding to pressurized fluid	<ul style="list-style-type: none">• Loose connections• Faulty connections/ couplers• Loose connections/ couplers• Oil level in pump is low• Pump not operating	<ul style="list-style-type: none">• Tighten connections• Replace connections/ couplers• Tighten connections/ couplers• Depressurize and fill the pump• Check pump's operating instructions
Bead breaker cannot close or shovel extends only partially	<ul style="list-style-type: none">• Oil level in pump is low• Sticking or binding components	<ul style="list-style-type: none">• Depressurize and fill the pump• Contact service center
Bead breaker responds to pressurized fluid, but does not maintain pressure	<ul style="list-style-type: none">• Pump or valve malfunctioning• Seals leaking	<ul style="list-style-type: none">• Check pump's operating instructions.• Contact service center
Oil leaks	<ul style="list-style-type: none">• Worn or damaged seals	<ul style="list-style-type: none">• Contact service center
Bead breaker will not open; Shovel will not retract or retracts slower than normal	<ul style="list-style-type: none">• Malfunctioning coupler• Pump reservoir overfilled• Damage internally• Linkage binding	<ul style="list-style-type: none">• Depressurize pump and hose, remove bead breaker and replace coupler• Depressurize pump and hose, remove bead breaker, drain fluid to proper level• Contact service center• Clean and lubricate moving parts
Shovel will not fully extend	<ul style="list-style-type: none">• Oil level in pump is low	<ul style="list-style-type: none">• Depressurize pump and hose, remove bead breaker, add fluid to proper level

REPLACEMENT PARTS

Not all components of the bead breaker are replacement items, but are illustrated as a convenient reference of location and position in the assembly sequence. When ordering parts, please give the Model number and parts description. Call or write for current pricing: SFA Companies 10939 N. Pomona Ave. Kansas City, MO 64153, U.S.A. E-Mail: sales@omegalift.com Tel: (888) 332-6419 Fax: (816) 891-6599 Website: <http://www.omegalift.com>

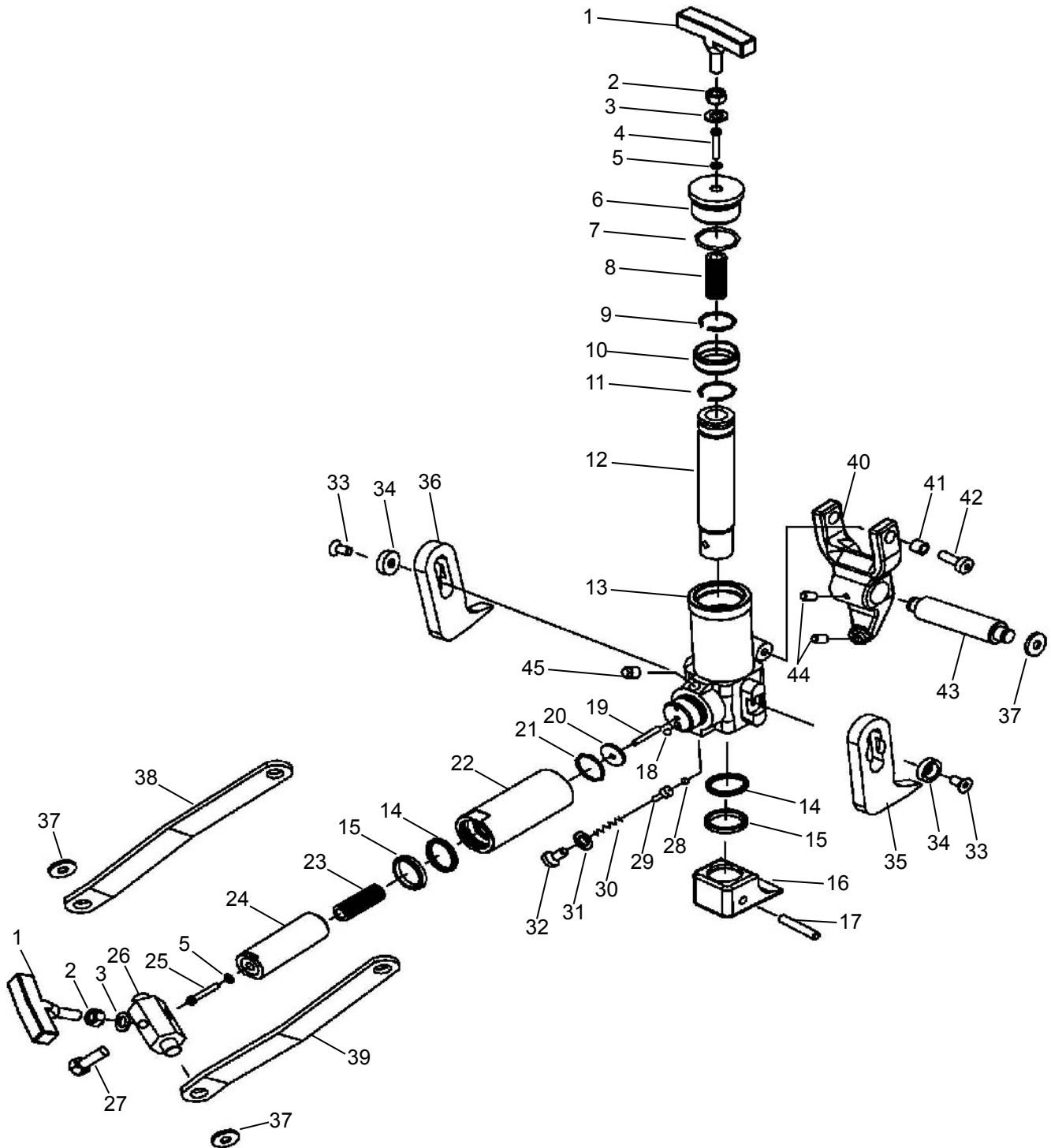


Figure 4 - Replacement Parts Illustration for Model 22910

Replacement Parts List for Model 22910

Item	Part Number	Description	Qty.
1	22910-001	Handle	2
2	22910-002	Nut, M12	2
3	22910-003	Washer, $\phi 12$	2
4	22910-004	Screw, M5x50	1
5	22910-005	Copper Washer, $\phi 5$	2
6	22910-006	Cylinder Cap	1
7	22910-007	O-ring	1
8	22910-008	Spring	1
9	22910-009	Snap Ring	1
10	22910-010	Bushing	1
11	22910-011	Snap Ring	1
12	22910-012	Ram Piston	1
13	22910-013	Base	1
14	22910-014	U-seal	2
15	22910-015	Bushing	2
16	22910-016	Shovel	1
17	22910-017	Pin	1
18	22910-018	Steel Ball, $\phi 6$	1
19	22910-019	Screw, M6x30	1
20	22910-020	Washer	1
21	22910-021	O-ring	1
22	22910-022	Cylinder	1
23	22910-023	Spring	1
24	22910-024	Ram Piston	1
25	22910-025	Screw, M5x70	1

Item	Part Number	Description	Qty
26	22910-026	Joint Block	1
27	22910-027	Bolt, M12x45	1
28	22910-028	Steel ball, $\phi 8$	1
29	22910-029	Ball Seal	1
30	22910-030	Spring	1
31	22910-031	Copper Washer, $\phi 12$	1
32	22910-032	Screw, M12x20	1
33	22910-033	Screw, M10x15	2
34	22910-034	Bushing	2
35	22910-035	Foot, Left	1
36	22910-036	Foot, Right	1
37	22910-037	Snap Ring	4
38	22910-038	Connecting Bar, Left	1
39	22910-039	Connecting Bar, Right	1
40	22910-040	Claw	1
41	22910-041	Bushing	2
42	22910-042	Screw, M10x25	2
43	22910-043	Axle	1
44	22910-044	Screw	2
45	22910-045	Plug, Oil Port	1
-	22910-L0	Label	1
-	22910-M0	Manual	1

90 DAYS LIMITED WARRANTY

For a period of ninety (90) days from date of purchase, SFA Companies will repair or replace, at its option, without charge, any of its products which fails due to a defect in material or workmanship under normal usage. This limited warranty is a consumer's exclusive remedy.

Performance of any obligation under this warranty may be obtained by returning the warranted product, freight prepaid, to SFA Companies Warranty Service Department, 10939 N. Pomona Ave., Kansas City, MO 64153.

Except where such limitations and exclusions are specifically prohibited by applicable law, (1) THE CONSUMER'S SOLE AND EXCLUSIVE REMEDY SHALL BE THE REPAIR OR REPLACEMENT OF DEFECTIVE PRODUCTS AS DESCRIBED ABOVE. (2) SFA Companies SHALL NOT BE LIABLE FOR ANY CONSEQUENTIAL OR INCIDENTAL DAMAGE OR LOSS WHATSOEVER. (3) ANY IMPLIED WARRANTIES, INCLUDING WITHOUT LIMITATION THE IMPLIED WARRANTIES OF MERCHANTABILITY AND FITNESS FOR A PARTICULAR PURPOSE, SHALL BE LIMITED TO NINETY DAYS, OTHERWISE THE REPAIR, REPLACEMENT OR REFUND AS PROVIDED UNDER THIS EXPRESS LIMITED WARRANTY IS THE EXCLUSIVE REMEDY OF THE CONSUMER, AND IS PROVIDED IN LIEU OF ALL OTHER WARRANTIES, EXPRESS OR IMPLIED. (4) ANY MODIFICATION, ALTERATION, ABUSE, UNAUTHORIZED SERVICE OR ORNAMENTAL DESIGN VOIDS THIS WARRANTY AND IS NOT COVERED BY THIS WARRANTY.

Some states do not allow limitations on how long an implied warranty lasts, so the above limitation may not apply to you. Some states do not allow the exclusion or limitation of incidental or consequential damages, so the above limitation or exclusion may not apply to you. This warranty gives you specific legal rights, and you may also have other rights, which vary from state to state.



SFA Companies
10939 N. Pomona Ave. Kansas City, MO 64153
888-332-6419
sales@omegalift.com