

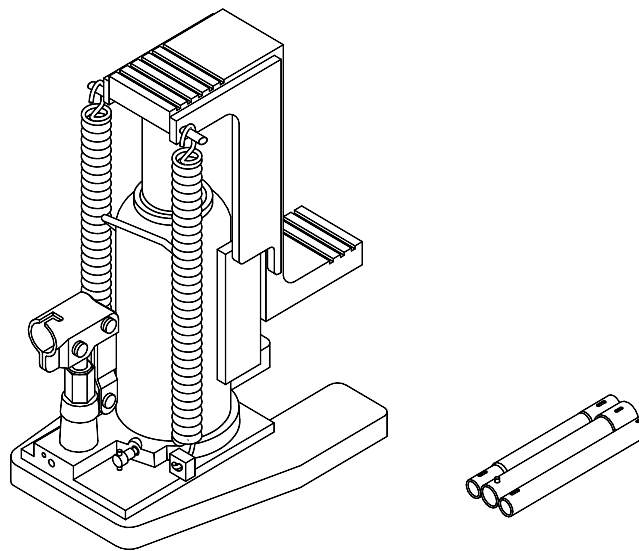
Operating Instructions & Parts Manual



Hydraulic Toe Jacks

Model
13060
13120
13200

Capacity
3 Ton
6 Ton
10 Ton



This is the safety alert symbol. It is used to alert you to potential personal injury hazards. Obey all safety messages that follow this symbol to avoid possible injury or death.

ADVERTENCIA

- Leer, comprender, y seguir las instrucciones antes de utilizar el aparato.
- El manual de instrucciones y la información de seguridad deben estar comunicado en lengua del operador antes del uso.
- No seguir estas indicaciones puede causar daños personales o materiales.

WARNING

To avoid **crushing and related injuries**:



NEVER work on, under or around a load supported only by a hydraulic jack. **ALWAYS** use adequately rated jack stands.

SFA Companies

<http://www.omegalift.com>

Read this manual and follow all the Safety Rules and Operating Instructions before using this product.

Printed in Taiwan
13060-M0 rev 07/08

Save these instructions. For your safety, read, understand, and follow the information provided with and on this jack before using. The owner and/or operator of this equipment shall have an understanding of this jack and safe operating procedures before attempting to use. The owner and/or operator shall be aware that the use and repair of this product may require special skills and knowledge. Instructions and safety information shall be conveyed in the operator's native language before use of this jack is authorized. If any doubt exists as to the safe and proper use of this jack, remove from service immediately.


Inspect before each use. Do not use if broken, bent, cracked, or damaged parts (including labels) are noted. Any jack that appears damaged in any way, operates abnormally or is missing parts, shall be removed from service immediately. If you suspect that the jack was subjected to a shock load (a load dropped suddenly, unexpectedly upon it), immediately discontinue use until the jack has been checked by a factory authorized service center (contact distributor or manufacturer for list of Authorized Service Centers). It is recommended that an annual inspection be done by qualified personnel. Labels and owner's manuals are available from manufacturer.

PRODUCT DESCRIPTION

This product is designed to lift, position, or move, **but not sustain**, rated capacity loads. It is **not** designed to be used as a stand-alone device. Any load lifted, positioned, or otherwise moved by this device, must immediately be supported by appropriately rated mechanical means. A wide variety of applications exist for this category of product. Special skill, knowledge and training may be required for a specific task and this product may not be suitable for all jobs listed. Unsuitable applications include applications that call for a device to lift, position, move or support persons, animals, hazardous materials, mobile homes and dwellings in general, mirrors, plate glass or to connect/secure hatches, components, and materials between bulkheads. The user ultimately must make the decision regarding suitability of the product for any given task and therefore accept responsibility for that decision.

HYDRAULIC JACK TECHNICAL SPECIFICATIONS

Rated Capacity of J13060: 6,000 lbs. (3 ton)
Rated Capacity of J13120: 12,000 lbs. (6 ton)
Rated Capacity of J13200: 20,000 lbs. (10 ton)
Brand name: Omega
Hydraulic Pressure @ Rated Capacity:
J13060: 4,185 psi
J13120: 4,000 psi
J13200: 5,400 psi

 *Use of this device may require special skills and knowledge. Read, understand, and follow **all** printed materials provided with and on this device before use.*



WARNING

To avoid personal injury and/or property damage:

- **Read**, understand and follow all printed materials provided with and on this jack.
- **This is a lifting device only! Never** work on, under, or around a load supported only by a hydraulic jack.
- **Immediately** support the lifted load with appropriately rated mechanical means.
- **Use only** on hard, level surfaces capable of sustaining rated capacity loads.
- Center load on saddle.
- No alteration shall be made to this device. Use **only** attachments, adapters and accessories provided by the manufacturer.
- **Be alert** and **sober** when using this product! **Never** operate this equipment when under the influence of drugs or alcohol.
- Use **only** high grade hydraulic jack oil in this product.
- **Always** use a calibrated means of determining how much force is being applied by this product. Never exceed the rated capacity of the jack.



*Use of this device may require special skills and knowledge. Read, understand, and follow **all** printed materials provided with and on this device **before use**.*

BEFORE USE



Before using this jack, ensure that the intended load contact point is able to withstand the load applied by this jack.

1. Before using this product, read the owner's manual completely and familiarize yourself thoroughly with the product, its components, and recognize the hazards associated with its use.
2. To familiarize yourself with basic operation, use the operating handle to engage and turn the release valve:
 - a. Clockwise until firm resistance is felt to further thread engagement. This is the '**CLOSED**' release valve position used to pressurize the hydraulic fluid and **raise** the ram plunger.
 - b. Counter-clockwise, but no more than 1 turn from the closed position. This is the '**OPEN**' release valve position used to **lower** the ram plunger.
3. Check that the pump operates smoothly before putting into service. Replace damaged or missing parts with factory authorized replacement parts only. Repair of this product may require special skills and knowledge and should only be attempted by a factory authorized service center. Contact the manufacturer or distributor of this product for a list of factory authorized service centers. Lubricate as instructed in Maintenance Section.

Bleeding/ Venting Trapped Air

With the release valve in the OPEN position (2b above) and with saddle fully lowered, locate and remove the oil filler plug/screw. Insert the handle into the handle sleeve; then pump 6 to 8 full strokes. This will help release any pressurized air which may be trapped within the reservoir. Oil level should be even with the bottom of the oil filler hole. Reinstall the oil filler plug/screw.

SPECIFICATIONS

Model	Capacity	Base Size (L x W)	Toe Saddle Min. / Max Height	Head Saddle Min. / Max. Height	Hydraulic Lift
13060	3 Ton	8-5/8" x 7-1/2"	5/8" ~ 5-3/4"	9" ~ 14-1/8"	5-1/8"
13120	6 Ton	11" x 7-1/2"	7/8" ~ 6"	10-1/2" ~ 15-5/8"	5-1/8"
13200	10 Ton	11-5/8" x 9-1/4"	1-1/8" ~ 6-1/4"	11" ~ 16-1/8"	5-1/8"

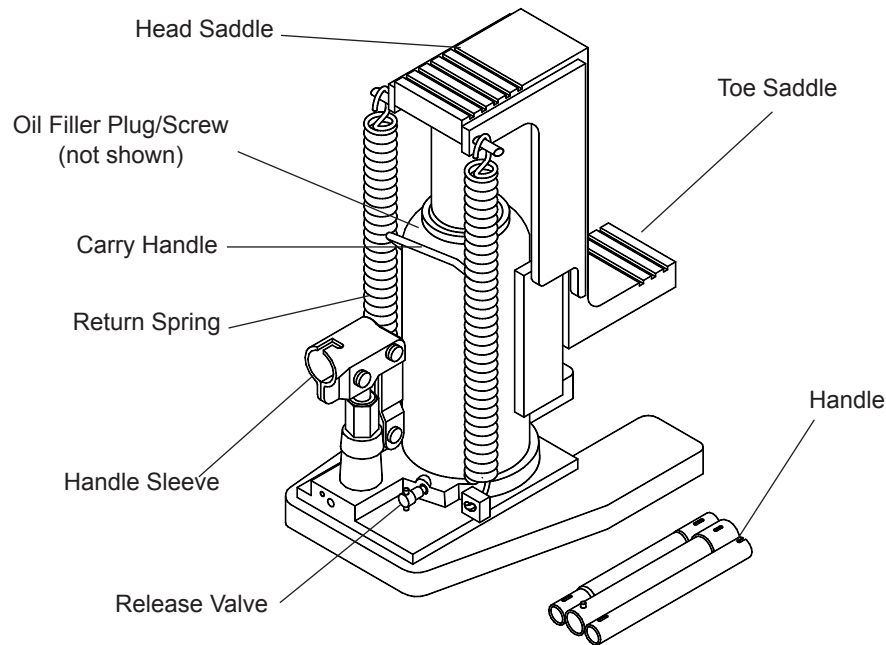


Figure 1 - 13060, 13120 & 13200 Nomenclature

OPERATION

⚠ Use of this device may require special skills and knowledge. Read, understand, and follow **all** printed materials provided with and on this device **before use**.

Raising the Ram Plunger

1. Assemble the 3-pc handle, ensure that spring clips align with slots.
2. Use the handle to engage and turn the release valve clockwise until firm resistance is felt to further thread engagement.
3. Pump until load reaches desired height. **Immediately** secure with appropriately rated mechanical devices.
It is recommended you follow the load with cribbing and blocking where practical.

⚠ Never allow personnel to work or pass under a load until the load is secured by cribbing, blocking, or other mechanical means.

Lowering

⚠ Make certain that all personnel are clear of the load before lowering. **Control** the rate of descent of the load **at all times**. The **more** you open the release valve, the **faster** the load descends.

1. Use the manufacturer's provided operating handle to engage and slowly turn the release valve counter-clockwise, but no more than 1 turn.

⚠ If the operating handle is damaged, operates abnormally, or will not positively engage the release valve, immediately discontinue use of the jack until a manufacturer's replacement handle assembly can be acquired.

2. Push ram down and handle sleeve in to reduce exposure to rust and contamination after removing jack from under load.

MAINTENANCE

Important: Use only good grade hydraulic jack oil. Avoid mixing different types of fluid and **NEVER** use brake fluid, turbine oil, transmission fluid, motor oil or glycerin. Improper fluid can cause premature failure of the jack and the potential for sudden and immediate loss of load. We recommend Mobil DTE13M or equivalent.

Adding

1. With saddle fully lowered set jack in its upright, level position. Locate and remove oil filler plug/screw.
2. Fill with oil even with the bottom of the oil filler hole. Reinstall the oil filler plug/screw.

Changing oil

For best performance and longest life, replace the complete fluid supply at least once per year.

1. With saddle fully lowered set jack in its upright, level position. Locate and remove oil filler plug/screw.
2. Lay the jack on its side and drain the fluid into a suitable container.

Note: Dispose of hydraulic fluid in accordance with local regulations.

3. Fill with oil even with the bottom of the oil filler hole. Reinstall the oil filler plug/screw.

Lubrication

A periodic coating of light lubricating oil to pivot points will help to ensure that pump piston linkages move freely.

Note: Never apply oil to saddle.

Cleaning

Periodically check the pump piston and ram plunger/saddle for signs of rust or corrosion. Clean as needed and wipe with a clean, oil soaked rag.



Paint contains lead!

DO NOT sand or grind painted surface!

Storage

Store the jack with pump piston, ram plunger/saddle fully lowered and release valve open, but never more than 1 turn. This will help prevent rust and corrosion to those critical surfaces.



WARNING

- The paint on this product contains lead, a chemical known in the State of California to cause cancer, birth defects and other reproductive harm.
- Do not ingest paint chips and keep product away from children.
- Wash hands after each use.

TROUBLESHOOTING

Symptom	Possible Causes	Corrective Action
Jack will not pressurize	<ul style="list-style-type: none">• Release valve not tightly closed• Load is too heavy	<ul style="list-style-type: none">• Ensure release valve tightly closed• Consider higher capacity jack
Jack *bleeds off after lift * 'bleeds off' means load slowly and unintentionally lowers after lifting	<ul style="list-style-type: none">• Hydraulic unit malfunction	<ul style="list-style-type: none">• Contact Service Center
While lowering, fluid leaks from reservoir area Jack saddle will not descend to lowest advertised height	<ul style="list-style-type: none">• Reservoir overfilled• Ram plunger/cylinder deformed, seized up in ram cylinder and/or top nut, likely the result of off-center loading	<ul style="list-style-type: none">• Drain fluid to proper level• Contact Service Center
Ram plunger will not remain lowered after released from contact with load (creeps back up)	<ul style="list-style-type: none">• Air trapped in system	<ul style="list-style-type: none">• Follow the Owners Manual instructions for bleeding air from system.
Poor lift performance	<ul style="list-style-type: none">• Fluid level low• Air trapped in system• Hydraulic unit malfunction	<ul style="list-style-type: none">• Ensure proper fluid level• Follow the Owners Manual instructions for bleeding air from system.• Contact Service Center
Will not lift to full extension	<ul style="list-style-type: none">• Fluid level low	<ul style="list-style-type: none">• Ensure proper fluid level

Replacement Parts Illustration for Model 13060

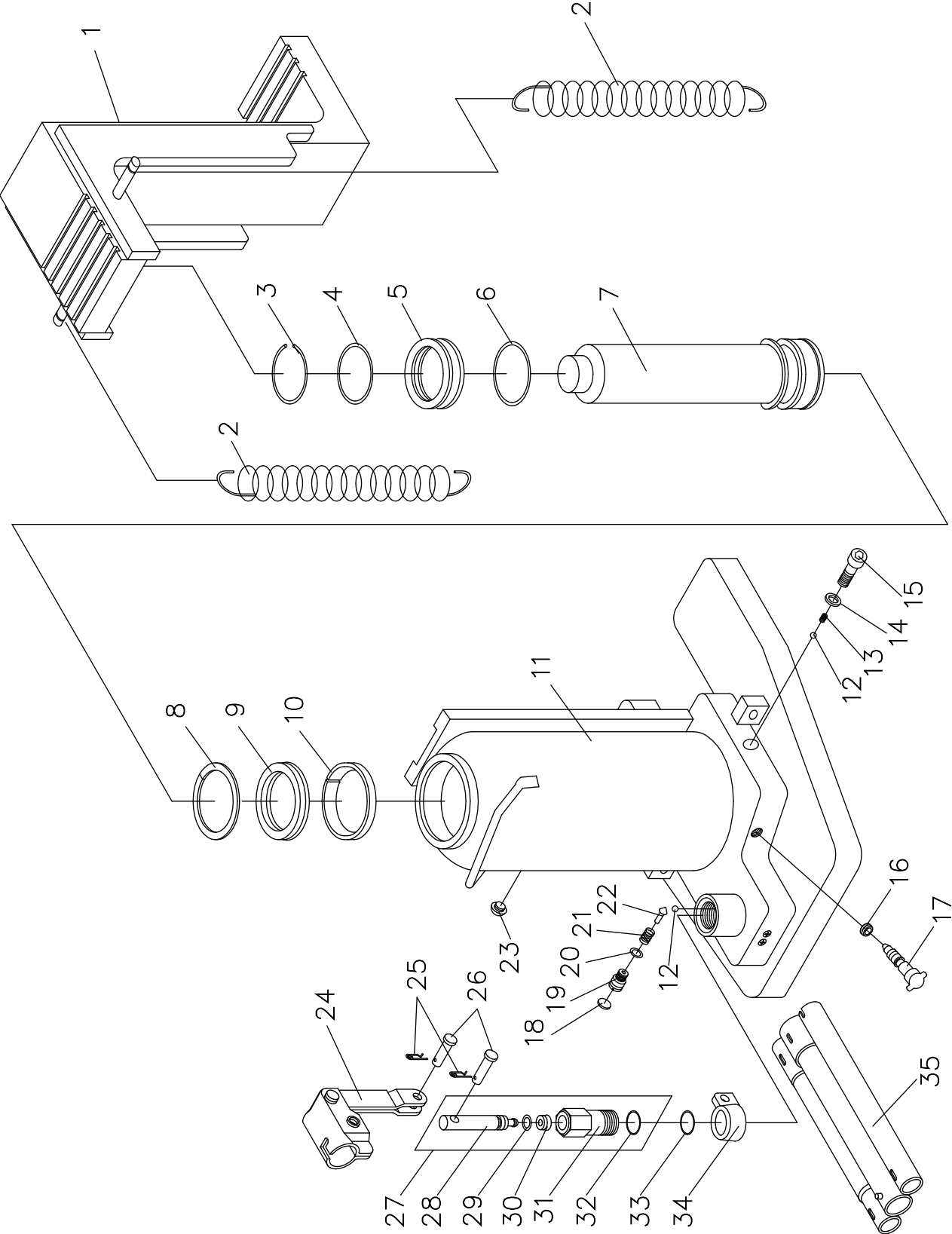


Figure 2 - Replacement Parts Illustration for Model 13060

Replacement Parts List for Model 13060

Item	Part# for 13060	Description	Qty.
1	136-3-1108-109	Saddle	1
2	522-2-0206-104	Return Spring	2
3	115-6-1808-102	Retainer Ring	1
4	*	O-ring	1
5	136-6-1204-103	Guide Ring	1
6	*	O-ring	1
7	N/A	Piston Rod	1
8	*	Back-up Ring	1
9	*	U-cup	1
10	599-7-0360-103	Guide Ring	1
11	N/A	Base Assy.	1
12	N/A	Steel Ball	2
13	511-2-0050-025	Spring	1
14	*	Washer	1
15	649-1-0080-046	Bolt	1
16	*	Oil Seal	1
17	238-6-1701-403	Release Valve	1
18	N/A	Valve Cap	1
19	414-6-1215-307	Screw	1
20	*	O-ring	1
21	512-2-0067-010	Spring	1
22	414-6-1216-107	Needle Valve	1
23	* 505-9-0092-207	Oil Filler Plug	1
24	226-3-1300-102	Handle Sleeve Assy.	1
25	511-5-0012-016	Snap Pin	2
26	518-4-0070-307	Pin	2
27	226-4-1415-105	Pump Assy.	1
28	N/A	Pump Piston	1
29	*	O-ring	1
30	*	Oil Seal Assy	1
31	N/A	Pump Cylinder	1
32	*	O-ring	1
33	*	Washer	1
34	226-6-1402-108	Swivel Seat	1
35	181-3-2100-103	Handle Assy	1
*	136-3-9906-107	Seal Kit	1

(*)- Items available only as Seal Kit. **Replacement requires special skills, knowledge, and equipment. Only** an authorized service center may perform the repair and/or replacement of these items.

N/A = Not user serviceable

Replacement parts illustration for Model 13120

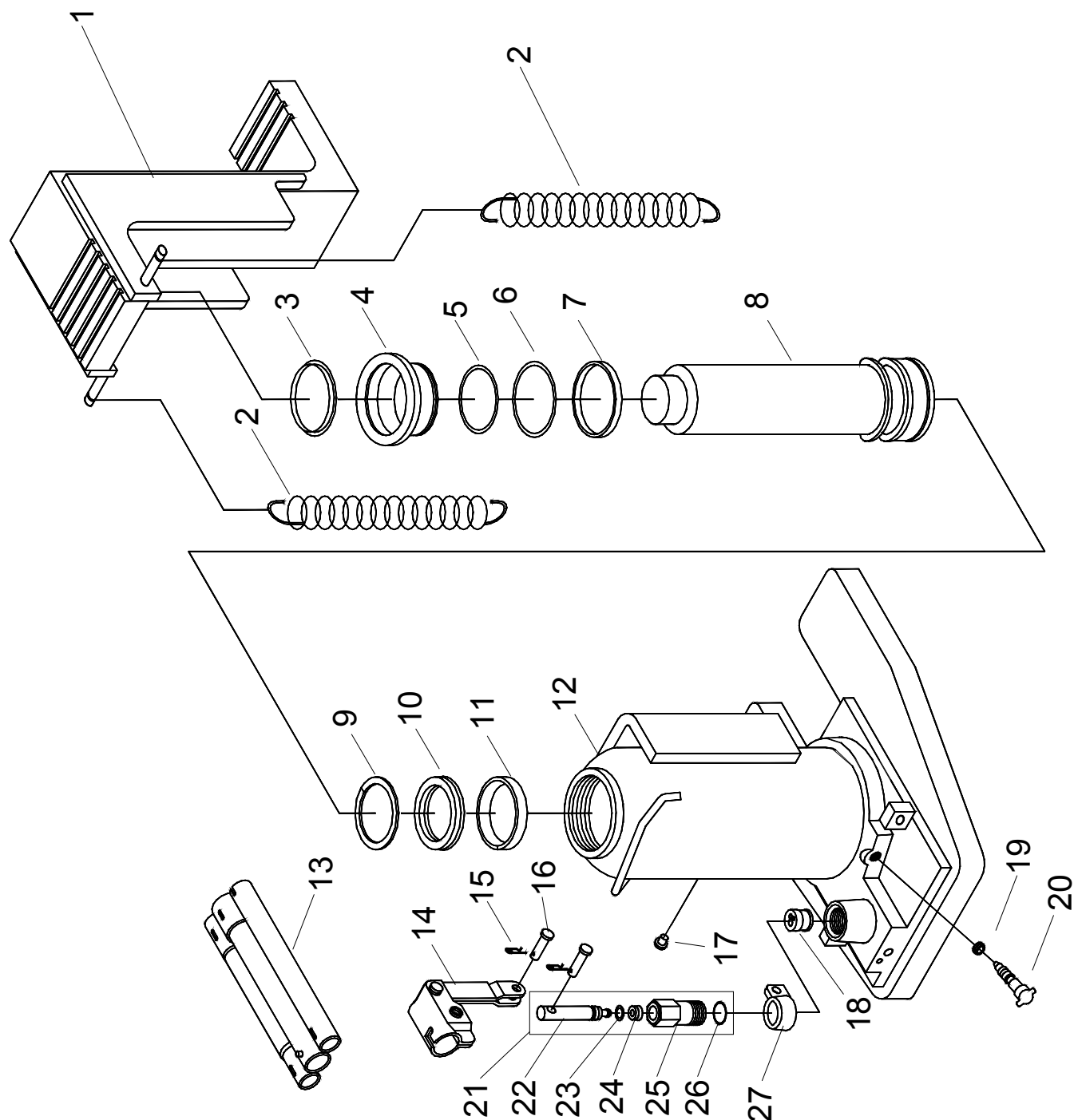


Figure 3 - Replacement Parts Illustration for Model 13120

Replacement Parts List for Model 13120

Item	Part# for 13120	Description	Qty.
1	186-3-1108-109	Saddle	1
2	522-2-0206-104	Return Spring	2
3	*	Dust Wiper	1
4	186-6-1810-304	Cylinder Fastener	1
5	*	O-ring	1
6	*	O-ring	1
7	186-6-1204-103	Guide Ring	1
8	N/A	Piston Rod	1
9	*	Back-up Ring	1
10	*	U-cup	1
11	*	Guide Ring	1
12	N/A	Base Assy.	1
13	181-3-2100-103	Handle Assy.	1
14	226-3-1300-102	Handle Sleeve Assy.	1
15	511-5-0012-016	Snap Pin	2
16	518-4-0070-307	Pin	2
17	* 505-9-0092-207	Oil Filler Plug	1
18	A20-4-1500-106	Hyd. Cartridge Assy.	1
19	*	Oil Seal	1
20	238-6-1701-403	Release Valve	1
21	226-4-1415-105	Pump Assy.	1
22	N/A	Pump Piston	1
23	*	O-ring	1
24	*	Oil Seal Assy.	1
25	N/A	Pump Cylinder	1
26	*	O-ring	1
27	266-2-1402-108	Swivel Seat	1
*	186-3-9906-107	Seal Kit	1

(*)- Items available only as Seal Kit. **Replacement requires special skills, knowledge, and equipment. Only** an authorized service center may perform the repair and/or replacement of these items.

N/A = Not user serviceable

Replacement parts illustration for Model 13200

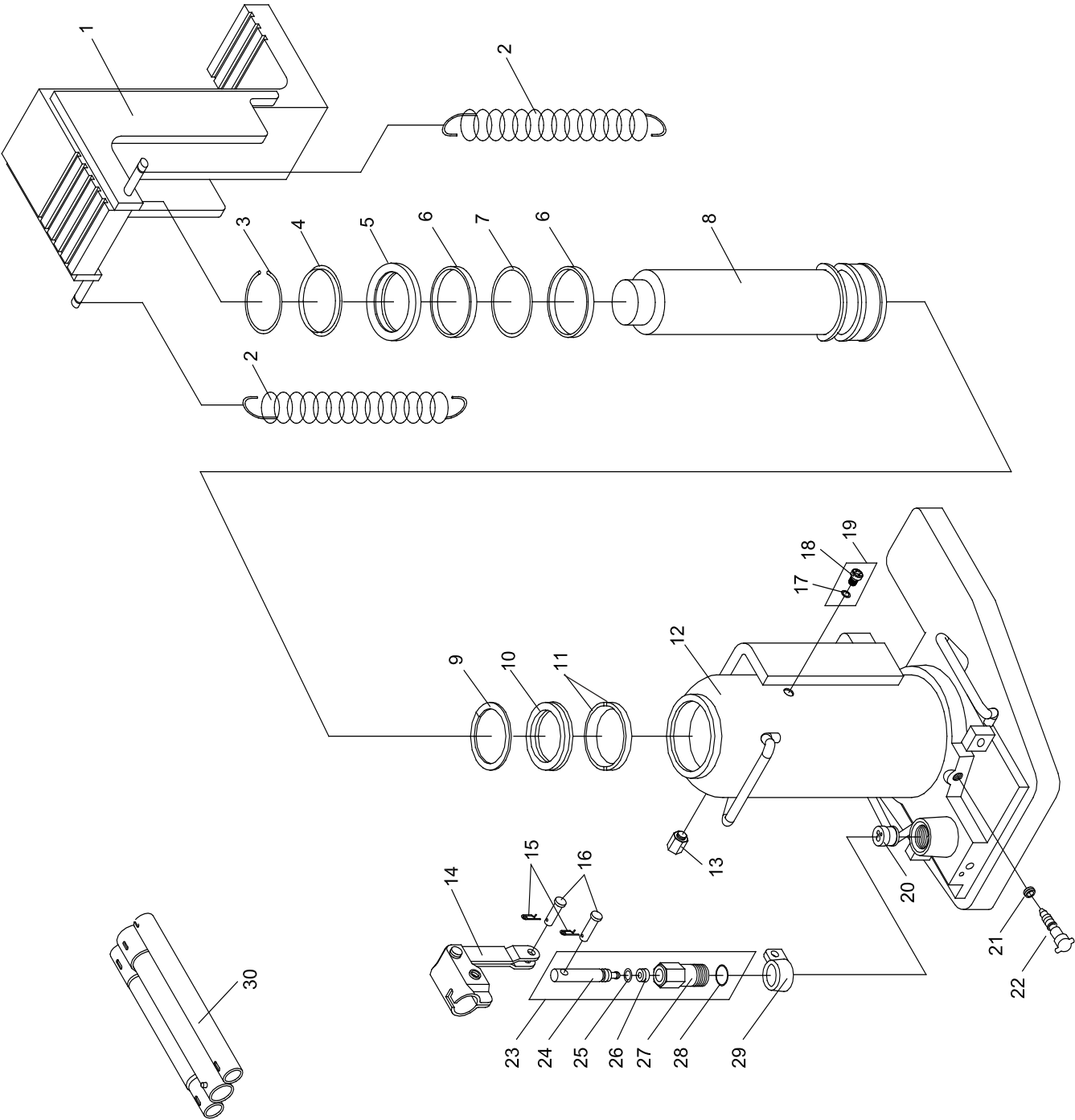


Figure 4 - Replacement Parts Illustration for Model 13200

Replacement Parts List for Model 13200

Item	Part# for 13200	Description	Qty.
1	226-3-1108-100	Saddle	1
2	522-2-0206-104	Return Spring	2
3	226-6-1808-106	Retainer Ring	1
4	*	Dust Wiper	1
5	N/A	Dust Wiper Set	1
6	226-5-1204-108	Guide Ring	2
7	*	O-Ring	1
8	N/A	Piston Rod	1
9	*	Back-up Ring	1
10	*	U-cup	1
11	226-6-1209-104	Bearing	2
12	N/A	Base Assy.	1
13	G55-4-1900-105	Vent Screw Assy.	1
14	226-3-1300-102	Handle Sleeve Assy.	1
15	511-5-0012-016	Snap Pin	2
16	518-4-0070-307	Pin	2
17	*	O-ring	1
18	N/A	Oil Filler Screw	1
19	324-4-1900-208	Oil Filler Screw Assy.	1
20	A20-4-1500-106	Hyd. Cartridge Assy.	1
21	*	Oil Seal	1
22	238-6-1701-403	Release Valve	1
23	226-4-1415-105	Pump Assy.	1
24	N/A	Pump Piston	1
25	*	O-ring	1
26	*	Oil Seal Assy.	1
27	N/A	Pump Cylinder	1
28	*	O-ring	1
29	226-6-1402-108	Swivel Seat	1
30	181-3-2100-103	Handle Assy.	1
*	226-3-9906-108	Seal Kit	1

(*)- Items available only as Seal Kit. **Replacement requires special skills, knowledge, and equipment. Only** an authorized service center may perform the repair and/or replacement of these items.

N/A = Not user serviceable

ONE YEAR LIMITED WARRANTY

For a period of one (1) year from date of purchase, **SFA Companies** will repair or replace, at its option, without charge, any of its products, which fails due to a defect in material or workmanship under normal usage. This limited warranty is a consumer's exclusive remedy.

Performance of any obligation under this warranty may be obtained by returning the warranted product, freight prepaid, to **SFA Companies** Warranty Service Department, 10939 N. Pomona Ave., Kansas City, MO 64153.

Except where such limitations and exclusions are specifically prohibited by applicable law, (1) THE CONSUMER'S SOLE AND EXCLUSIVE REMEDY SHALL BE THE REPAIR OR REPLACEMENT OF DEFECTIVE PRODUCTS AS DESCRIBED ABOVE. (2) **SFA Companies** SHALL NOT BE LIABLE FOR ANY CONSEQUENTIAL OR INCIDENTAL DAMAGE OR LOSS WHATSOEVER. (3) ANY IMPLIED WARRANTIES, INCLUDING WITHOUT LIMITATION THE IMPLIED WARRANTIES OF MERCHANTABILITY AND FITNESS FOR A PARTICULAR PURPOSE, SHALL BE LIMITED TO ONE YEAR, OTHERWISE THE REPAIR, REPLACEMENT OR REFUND AS PROVIDED UNDER THIS EXPRESS LIMITED WARRANTY IS THE EXCLUSIVE REMEDY OF THE CONSUMER, AND IS PROVIDED IN LIEU OF ALL OTHER WARRANTIES, EXPRESS OR IMPLIED. (4) ANY MODIFICATION, ALTERATION, ABUSE, UNAUTHORIZED SERVICE OR ORNAMENTAL DESIGN VOIDS THIS WARRANTY AND IS NOT COVERED BY THIS WARRANTY.

Some states do not allow limitations on how long an implied warranty lasts, so the above limitation may not apply to you. Some states do not allow the exclusion or limitation of incidental or consequential damages, so the above limitation or exclusion may not apply to you. This warranty gives you specific legal rights, and you may also have other rights, which vary from state to state.



SFA Companies
10939 N. Pomona Ave. Kansas City, MO 64153
888-332-6419
sales@omegalift.com

Note Page

[illegible]

Contact:
SFA Companies
 10939 N. Pomona Ave. Kansas City, MO 64153, U.S.A.
 Tel:(888)332-6419 Fax:(816)891-6599
 E-Mail:sales@omegalift.com
 Omega Website: <http://www.omegalift.com>

