



PROFESSIONAL LIFTING EQUIPMENT

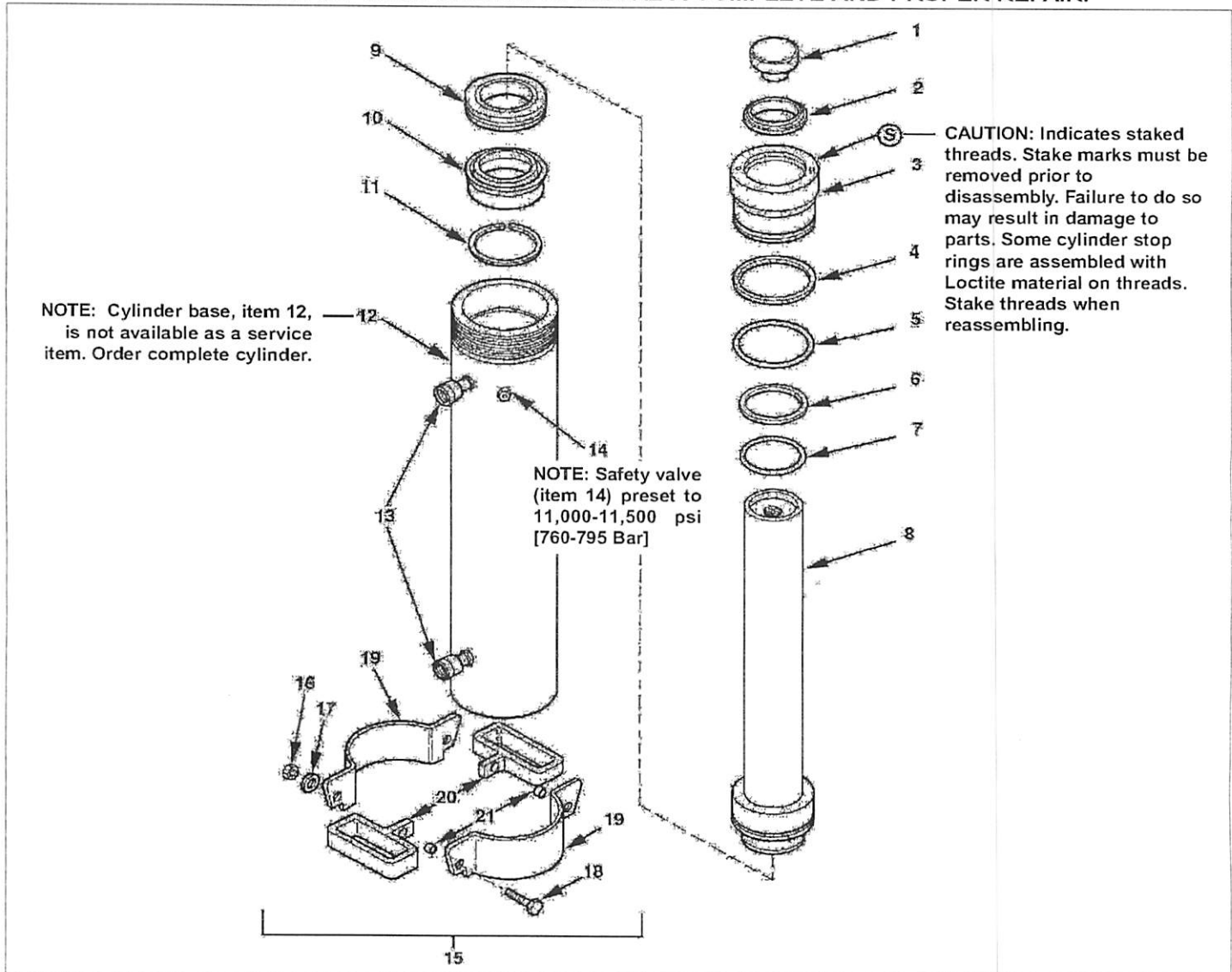
Repair Parts Sheet

999106

L2304 Rev. B 10/00

For Date Codes Beginning with the Letter "C"

INSTALL ALL KIT COMPONENTS TO INSURE A COMPLETE AND PROPER REPAIR.



Repair Parts List

Item	Part Number	Qty.	Description	Item	Part Number	Qty.	Description
1	L748900SR	1	Saddle Assembly	13	910038A	2	Coupler
2	★	1	Wiper Ring	14	CJ160900W	1	Relief Valve
3	CL800044	1	Stop Ring	15	CL1055950SR	1	Handle Assembly (incl. item 16, 17, 18, 19, 20, 21)
4	★	1	Back-Up Washer	16	B1009120	2	Hex Nut
5	★	1	O-Ring	17	B1019066	2	Lockwasher
6	★	1	Back-Up Washer	19	B1141046	2	Cap Screw
7	★	1	O-Ring	20	DA5184070SR	2	Handle (incl. item 16, 17, 18, 21)
8	G678040	1	Plunger	21	CL9690639	2	Collar
9	★	1	G-T Ring	22	CL404271	1	Thread Protector (not shown)
10	★	1	U-Cup	23	CD411M	2	Dust Cap (not shown)
11	★	1	Retaining Ring				
12	Order complete cylinder	1	Cylinder				

★ Items included in and available only as part of Repair Kit PEM2000K.