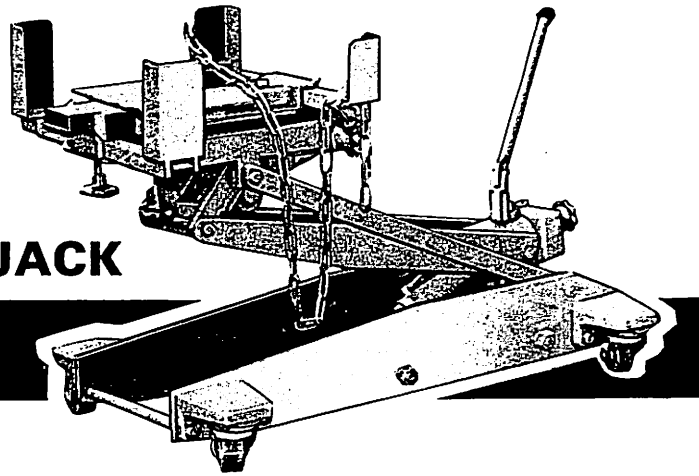




MODEL  
72005

## .8 TON CAPACITY HYDRAULIC TRANSMISSION JACK

# OWNERS MANUAL

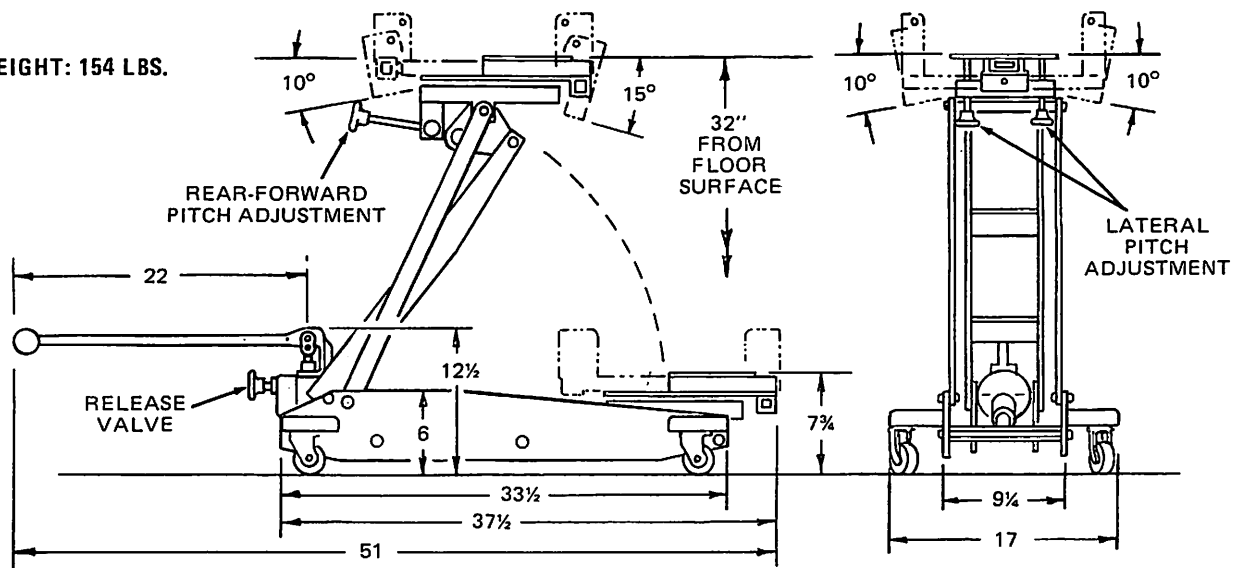


### important

Please read these instructions carefully before using your jack. Proper use and care of the jack will help to assure you of continuous, safe, trouble-free performance

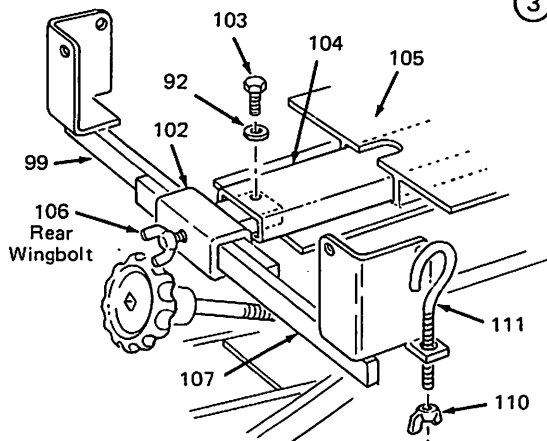
### specifications

WEIGHT: 154 LBS.



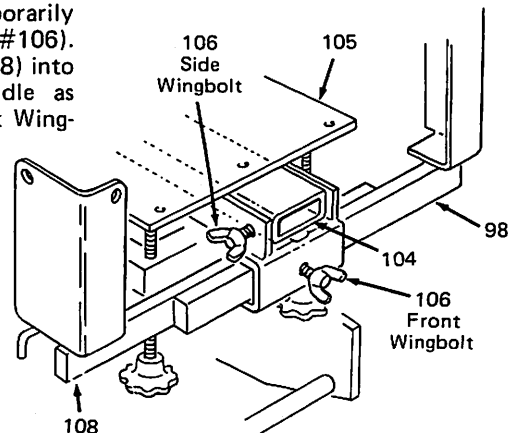
### assembling jack for operation

- ① Insert "T" Tube (#102) into Tube Channel (#104) and secure with lockwasher (#92) and Bolt (#103). Be sure threaded hole lines up and Bolt goes all the way in.
- ② Slide Tube Channel (#104) into Saddle Gusset (#105) and temporarily secure with Side Wingbolt (#106).



- ③ Install Rear Arms (#99, #107) into "T" Tube (#102) and temporarily secure with Rear Wingbolt (#106). Install Front Arms (#98, #108) into front square tubing on saddle as shown and secure with Front Wingbolt (#106).

- ④ Insert Eye Bolt (#111) into hole on Rear Arm (#107) and attach Wingnut (#110).



# operating instructions

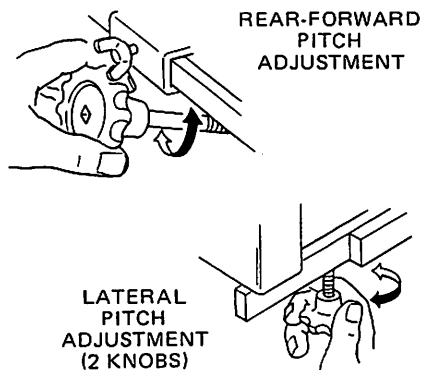
## CAUTION

THIS JACK IS DESIGNED ONLY FOR TEMPORARY LIFTING AND LOWERING OF TRANSMISSIONS, DIFFERENTIALS AND SMALL ENGINES. FOR YOUR SAFETY, ALWAYS BE SURE THE VEHICLE IS FIRMLY SUPPORTED BY SAFETY STANDS OR OTHER POSITIVE SUPPORT BEFORE USING THIS JACK. NEVER USE THIS JACK FOR LOADS BEYOND ITS RATED CAPACITY AND ALWAYS BE SURE THE LOAD IS FIRMLY SECURED TO SADDLE.

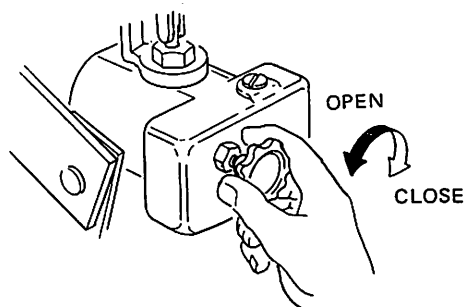
**IMPORTANT:** Sometimes during shipment and handling, air gets into the hydraulic system, causing poor lifting performance. Purge any air from the system by fully opening Release Valve (turn handle counter-clockwise all the way); then, while holding the saddle down, operate pump handle rapidly several times.

- 1 Position Jack under load, close Release Valve and pump saddle up to make contact with belly of transmission. Adjust the 4 Arms (as shown on front page) to provide a solid cradle for the load. Adjust the pitch of the saddle by turning knobs as shown.
- 2 When load is firmly cradled in saddle, tighten all wingbolts securely. Connect one end of safety chain (#109) to Eye Bolt (#111) as shown, wrap over top of load and attach the other end to "L" Rod on opposite bracket as shown. Draw chain tight by turning wingnut (#110) on Eyebolt.

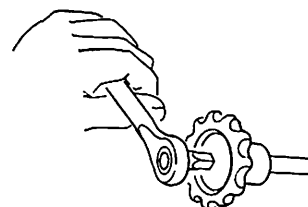
### ADJUSTING PITCH OF SADDLE



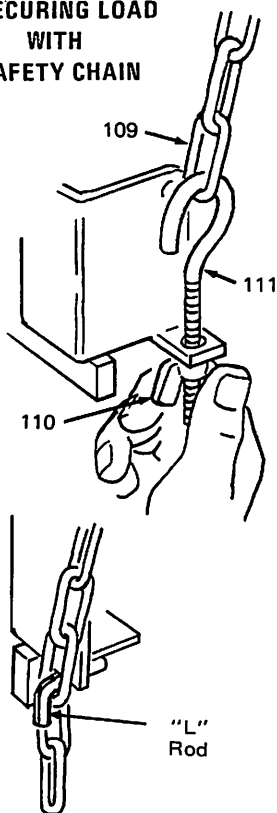
### OPERATING RELEASE VALVE



### SLIGHT PITCH ADJUSTMENT

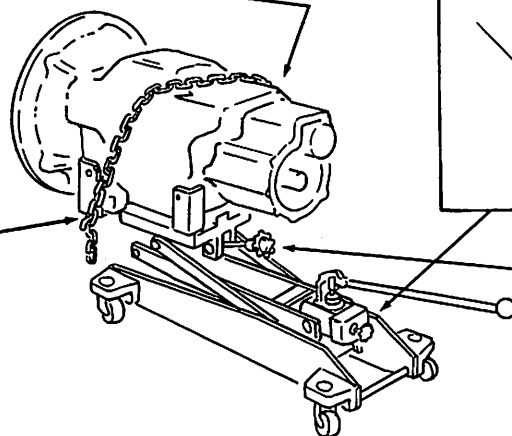


### SECURING LOAD WITH SAFETY CHAIN



- 3 For added safety before lowering, make sure all Wingbolts are TIGHTENED. Lower load by turning Release Valve Knob SLOWLY counter-clockwise as shown.

**NOTE:** After load has been lowered, SLIGHT adjustments in pitch can be done using a ratchet wrench with a  $\frac{1}{2}$ " square drive as shown.



## maintenance procedures

**IMPORTANT:** When adding or replacing oil, always use a good grade hydraulic jack oil. Avoid mixing types of oil. DO NOT use Brake Fluid, Alcohol, Glycerine, detergent motor oil or dirty oil. Improper fluid can cause serious internal damage to jack. When adding oil, be VERY CAREFUL not to permit dirt or any foreign matter to get into the system.

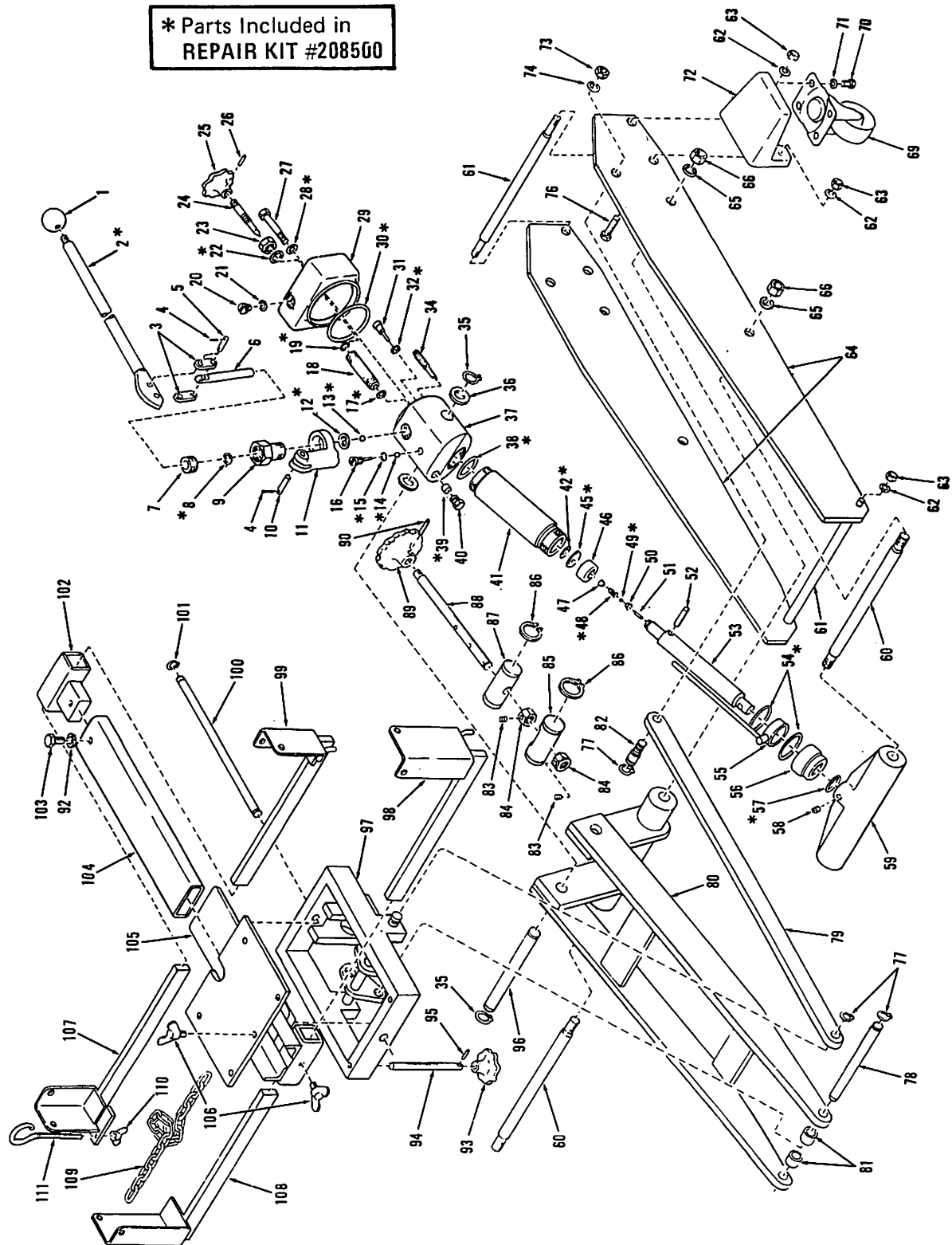
Check Ram and Plunger every 3 months for any signs of rust or corrosion. Clean as needed and wipe with an oily cloth. Add oil or grease periodically to the threaded pitch adjustment rods (#88 and #94). When not using jack, always leave the saddle all the way down.

# repair parts

NORCO MODEL 72005

## HYDRAULIC TRANSMISSION JACK

\* Parts Included in  
REPAIR KIT #208560



# repair parts list

INDEX NO.	DESCRIPTION	PART NO.	QTY.	INDEX NO.	DESCRIPTION	PART NO.	QTY.
1	Knob	208001	1	57	"O" Ring	32013	1
2	Lever	208002	1	58	Set Screw	208152	1
3	Connecting Bar	208006	2	59	Connecting Joint Assy	208160	1
4	Cotter Pin	7011	6	60	Arm Pin	208166	2
5	Pin	208007	2	61	Separator	208167	2
6	Pump Plunger	208008	1	62	Lockwasher	22010	8
7	Gland Nut	208101	1	63	Nut	208168	8
8	V-type Packing	208102	1	64	Frame Side	208169	2
9	Pump Cylinder	208103	1	65	Lockwasher	22011	4
10	Plunger Pin	208104	1	66	Nut	208171	4
11	Lever Bracket	208106	1	67			
12	Copper Packing	208107	1	68			
13	Steel Ball — .250 dia.	9004	1	69	Caster	208172	4
14	Steel Ball — .250 dia.	9004	1	70	Bolt	208173	16
15	"O" Ring	32009	1	71	Lockwasher	22012	16
16	Cap Plug	208108	1	72	Bracket — Caster	208174	4
17	Copper Packing	208109	1	73	Nut	208176	2
18	Release Valve Housing	208111	1	74	Lockwasher	22013	2
19	"O" Ring	32010	1	75			
20	Air Vent Plug	208112	1	76	Bolt	208177	4
21	Rubber Packing	208113	1	77	Snap Ring	208178	6
22	Rubber Gasket	208114	1	78	Arm Pin	208179	1
23	Lock Nut	208116	1	79	Link Rod	208181	2
24	Release Valve	208117	1	80	Arm Assy	208200	1
25	Grip — Release Valve	208118	1	81	Spacer	208183	2
26	Roll Pin	203038	1	82	Link Rod Pin	208184	2
27	Bolt	208119	1	83	Set Screw	208186	2
28	Fibre Gasket	208121	1	84	Nut	208187	2
29	Oil Tank	208122	1	85	Pin	208188	1
30	Rubber Gasket	208123	1	86	Snap Ring	208189	4
31	Cap Plug	208108	1	87	Pin (w/threads)	208191	1
32	"O" Ring	32009	1	88	Screw	208192	1
33				89	Grip	208193	1
34	Oil Strainer	208124	1	90	Roll Pin	27011	1
35	Snap Ring	32011	1	91			
36	Washer	208126	2	92	Lockwasher	22010	1
37	Oil Box	208127	1	93	Knob	208196	2
38	Copper Packing	208128	1	94	Threaded Rod	208197	2
39	Cork Packing	203214	1	95	Roll Pin	203038	2
40	Pipe Nipple	203216	1	96	Pin	208198	1
41	Cylinder	208129	1	97	Tilting Saddle Frame Assy	208220	1
42	Snap Ring	32012	1	98	Front Left Arm	208231	1
43				99	Rear Left Arm	208232	1
44				100	Bar	208233	1
45	U-type Packing	208131	1	101	Snap Ring	32014	2
46	Piston Packing Receiver	208132	1	102	Tube	208234	1
47	By-pass Screw	208133	1	103	Bolt	208236	1
48	Spring	208134	1	104	Bar	208237	1
49	Steel Ball — .250 dia.	9004	1	105	Gusset Assy	208240	1
50	Spring Retainer	208136	1	106	Wing Bolt	208238	4
51	By-pass Rod	208137	1	107	Rear Right Arm	208239	1
52	By-pass Limit Pin	208138	1	108	Front Right Arm	208246	1
53	Piston Rod	208139	1	109	Chain	208247	1
54	Fibre Gasket	208141	2	110	Wing Nut	208248	1
55	Ring Assy	208145	1	111	Eye Bolt	208249	1
56	Tank Nut	208151	1				

**ORDERING PARTS:** all parts orders must contain the following information:

(DO NOT ORDER BY INDEX NO. ONLY  
— such orders will not be processed)

1. PART NUMBER      3. QUANTITY DESIRED  
2. PART DESCRIPTION      4. MODEL NO. &  
   SERIAL NO. (if any)

Parts prices are according to current price lists and subject to change without notice.

If problems occur which involve any internal malfunction, take the jack to your nearest authorized NORCO Service Center



P.O. BOX 2045 • 344 W. 157TH ST.  
GARDENA, CALIF. 90247  
PHONE (213) 321-0970