



## Inspection:

Visual inspection should be made before each use of the service jack, checking for leaking hydraulic fluid and damaged, loose or missing parts. Each jack must be inspected by a manufacturer's repair facility immediately, if accidentally subjected to an abnormal load or shock. Any jack which appears to be damaged in any way, found to be badly worn, or operates abnormally **MUST BE REMOVED FROM SERVICE** until necessary repairs are made by a manufacturer's authorized repair facility. It is recommended that an annual inspection of the jack be made by a manufacturer's authorized repair facility and that any defective parts, decals or warning labels be replaced with manufacturer's specified parts.

A list of authorized repair facilities is available from the manufacturer.

## Owner/User Responsibility:

The owner and/or user must have a thorough understanding of the manufacturer's operating instructions and warnings before using the service jack. Personnel involved in the use and operation of equipment shall be careful, competent, trained, and qualified in the safe operation of the equipment and its proper use when servicing motor vehicles and their components. Warning information should be emphasized and understood. If the operator is not fluent in English, the manufacturer's instructions and warnings shall be read to and discussed with the operator in the operator's native language by the purchaser/owner, making sure that the operator comprehends its contents.

Owner and/or user must study and maintain for future reference the manufacturer's instructions and pertinent warning information. Owner and/or user is responsible for keeping all warning labels and instruction manuals legible and intact. Replacement labels and literature are available from the manufacturer.



**THIS OPERATING MANUAL CONTAINS IMPORTANT DETAILS CONCERNING THE SAFE OPERATION OF THIS TOOL. THE USER MUST READ AND UNDERSTAND THESE DETAILS BEFORE ANY USE OF THE TOOL. THIS MANUAL MUST BE RETAINED FOR FUTURE REFERENCE.**

# MTN5506

## 3.5 TON

## QUICK LIFT SERVICE JACK

### CAPACITY

## ! WARNING



**THIS IS A LIFTING DEVICE ONLY. DO NOT MOVE OR DOLLY THE VEHICLE WHILE ON THE JACK. IMMEDIATELY AFTER LIFTING, SUPPORT THE VEHICLE WITH APPROPRIATE MEANS.**

**DO NOT EXCEED RATED CAPACITY. OVERLOADING CAN CAUSE DAMAGE TO OR FAILURE OF THE JACK.**

**LIFT ONLY ON AREAS OF THE VEHICLE AS SPECIFIED BY THE VEHICLE MANUFACTURER.**

**CENTER LOAD ON SADDLE PRIOR TO LIFTING. OFF-CENTER LOADS MAY CAUSE DAMAGE TO JACK, LOSS OF LOAD, PROPERTY DAMAGE, PERSONAL OR FATAL INJURY.**

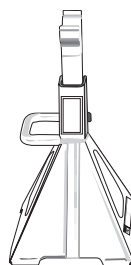
**THIS JACK IS DESIGNED FOR USE ONLY ON HARD LEVEL SURFACES CAPABLE OF SUSTAINING THE LOAD. USE ON OTHER THAN HARD LEVEL SURFACES CAN RESULT IN JACK INSTABILITY AND POSSIBLE LOSS OF LOAD.**

**NO ALTERATIONS TO THE JACK SHALL BE MADE.**

**READ, STUDY AND UNDERSTAND THE OPERATING MANUAL PACKED WITH THIS JACK BEFORE OPERATING.**

**FAILURE TO HEED THESE WARNINGS MAY RESULT IN LOSS OF LOAD, DAMAGE TO JACK, AND/OR FAILURE RESULTING IN PROPERTY DAMAGE, PERSONAL OR FATAL INJURY.**

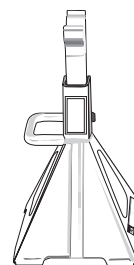
## ! WARNING



**FOR YOUR SAFETY AND TO PREVENT INJURY:**

**Use Service Jack for lifting purposes ONLY.**

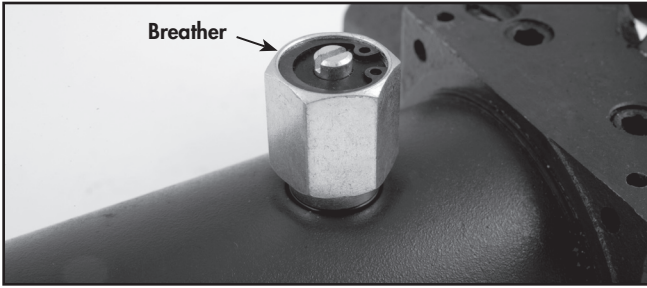
**Always support vehicle with jack stands.**



## ! WARNING

**THE JACK MUST BE REMOVED FROM SERVICE IMMEDIATELY AND INSPECTED BY A MANUFACTURER'S REPAIR FACILITY IF IT IS SUBJECTED TO AN ABNORMAL SHOCK OR LOAD.**

# Operating Instructions



## BEFORE USE:

The breather located below hole in cross plate must be opened. Insert slotted screw driver through hole and turn breather screw counter clockwise until it stops turning. Do not force screw past stopping point.

Air may become trapped in the hydraulic system during transit. To purge air:

1. Open release valve by turning handle counterclockwise.
2. Pump handle rapidly 4 full strokes. This will expel air that may have entered oil passages during transit.
3. Close release valve by rotating handle clockwise and pump handle.
4. If lift arm is raised, jack is ready for use. If not, repeat this procedure.

**IMPORTANT:** Before attempting to raise a vehicle, check vehicle service manual for recommended lifting surfaces.

## OPERATION:

1. **To raise load:** Close release valve tightly (by turning handle clockwise). **DO NOT OVERTIGHTEN.** Position jack under load so that saddle will contact load firmly and load is centered so it cannot slip. Operate jack handle until saddle approaches the load. Once again, check to see that saddle is correctly positioned. Raise load to desired height. Place jack stands of appropriate capacity under the vehicle. **DO NOT CRAWL UNDER VEHICLE WHILE LIFTING VEHICLE OR PLACING OR REMOVING JACK STANDS!** Place jack stands at vehicle manufacturer's recommended lift areas that provide stable support for the raised vehicle. Once jack stands are positioned, open the release valve VERY SLOWLY (by turning the handle counterclockwise). Lower the load to rest on the jack stands. Then make sure that the release valve on the jack is closed tightly (by turning the handle clockwise).

2. **To lower load:** Re-check to make sure release valve is tightly closed. Then, operate the jack handle until the load is raised enough to remove the jack stands. **DO NOT CRAWL UNDER VEHICLE WHILE LIFTING VEHICLE OR REMOVING THE JACK STANDS!** Once jack stands are removed, open release valve very slowly to lower the vehicle. Lower jack completely so that the vehicle is securely resting on the ground and that the jack no longer makes contact with vehicle.

**CAUTION:** Keep hands or feet away from the hinge mechanism of the jack.

## Alterations

Because of potential hazards associated with this type of equipment, no alterations shall be made to the product.

## Maintenance

When adding or replacing hydraulic fluid, always use a quality hydraulic fluid. **DO NOT** use brake fluid, alcohol, detergent motor oil, dirty oil or any fluid other than quality hydraulic fluid. Improper fluids can cause internal damage to the jack and improper or unsafe operation.

### ADDING HYDRAULIC FLUID

With the saddle fully lowered and the jack on level ground, remove the filler plug. Hydraulic fluid should be filled to the level of the filler plug hole. If the level is below this hole, add hydraulic fluid as needed.

## Lubrication

All moving joints require lubrication often. Remove handle and grease the lower end of handle where it rotates in the handle socket. Using a grease gun, grease the lift arm pivot shaft grease fitting until grease appears at the end of the shaft. Oil all lift arm linkages, front wheels and rear casters.

### SERVICE JACK SPECIFICATIONS

MODEL NO.	MTN5506
Capacity	3.5 Tons
Low Height	4"
Raised Height	19.25"
Saddle Diameter (with pad)	5.3"
Handle Length (2 piece)	50.5"
Base Length	29"
Chassis Width	14.5"
Wheel Width	2.25"
Shipping Wt.	115 Lbs.

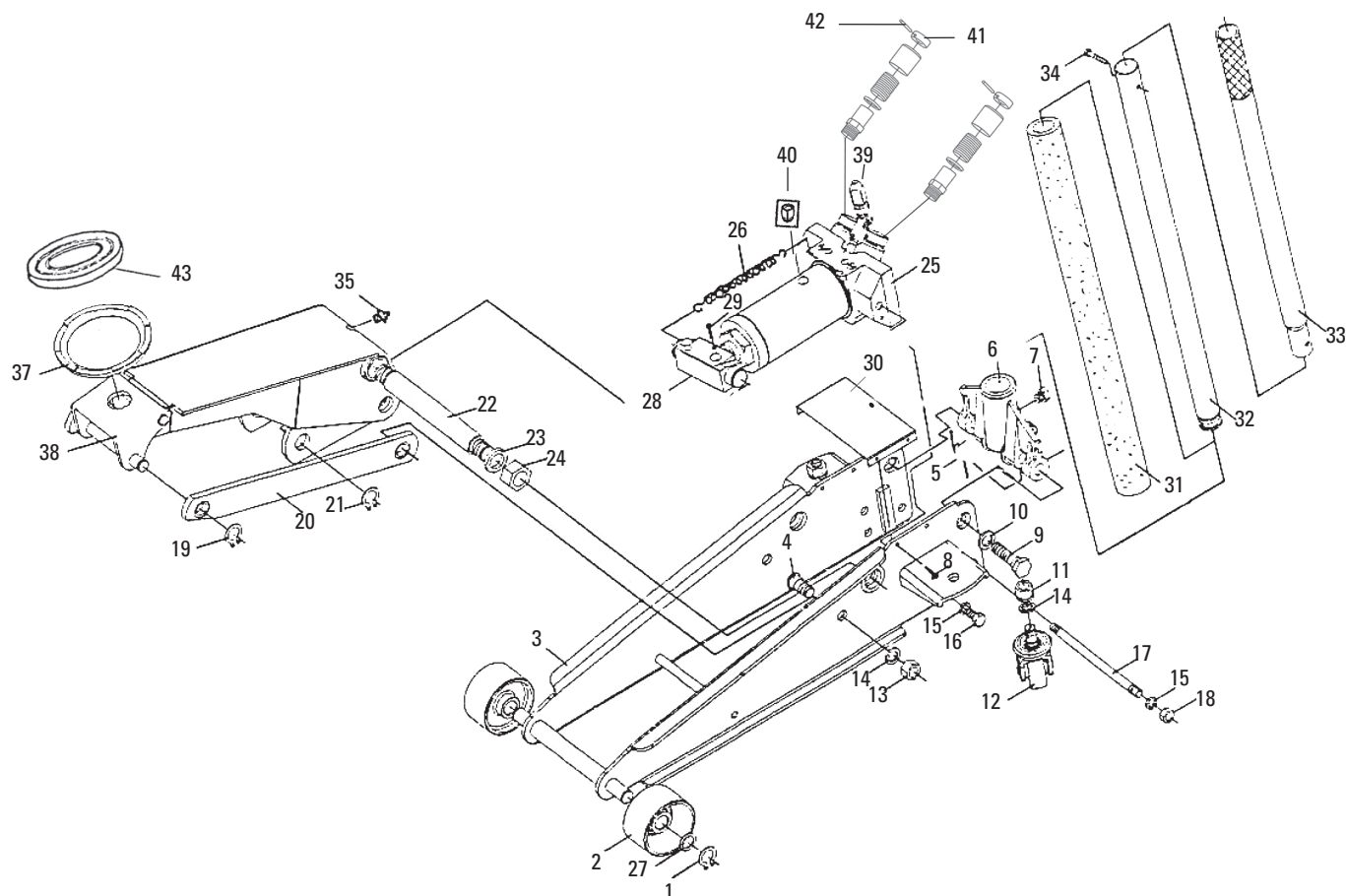


# MTN5506

## 3.5 TON

CAPACITY

## QUICK LIFT SERVICE JACK



Item No.	Part No.	Description	Qty.	Item No.	Part No.	Description	Qty.
1	RS3501	Retaining Ring	2	23		Spring Washer 24	2
2	RS3502	Wheel	2	24		Hex Nut M24	2
3		Side Plate Assembly	1	25	RS35A25BK	Power Unit Assembly	1
4		Bolt	2		RS34A25SK	Seal Kit for Power Unit	1
5	RS35A05	Torsion Spring	1	26	RSSJ322	Spring	2
6	RS35A06BK	Handle Socket	1	27	RS35011	Washer	2
7	RS3526	Bolt	1	28	RS3520ABK	Block Linkage (incl. with #29)	1
8		Screws	4	29		Split Pin 4 x 25	1
9	RS3516	Bolt (handle socket)	2	30		Inspection Plate	1
10		Spring Washer 18	2	31	RS35HB	Handle Bumper	1
11	RS3511	Hex Nut M16	2	32	RS3535	Handle, Lower	1
12	RS3512BK	Caster Assembly	2	33	RS3536	Handle, Upper	1
13		Hex Nut M16	2	34	RS3534	Hex Bolt M6 x 35	1
14		Spring Washer 16	4	35	RS35GF	Grease Fitting	1
15		Spring Washer 12	4	37	RS3506	Saddle	1
16		Hex Bolt M12 x 20	2	38		Lift Arm Assembly	1
17		Pull Rod	1	39	RS3530BK	Release Assembly	1
18		Hex Nut M12	2	40	RS35BA	Breather	1
19		Retaining Ring	2	41	RS35241	Cap for Pump Plunger	2
20		Long Linkage	2	42	RS35242	Pin for Pump Plunger Cap	2
21		Retaining Ring 25	2	43	RS35SC	Saddle Cover	1
22		Shaft Arm	1				

Only items identified by part number are available for purchase.

## Proper Storage

It is recommended that the service jack be stored in a dry location with all wheels touching the ground on a relatively level surface.

## Troubleshooting

Important: Service jacks are self-contained devices used for lifting, but not sustaining, a partial vehicular load. In accordance with ASME-PALD standard, section 10-4.1.2 Load Sustaining Test: "A load not less than the rated capacity... shall not lower more than 1/8" (3.18mm) in the first minute, nor a total of .1875" (4.76mm) in 10 minutes." Leak down within this range is considered normal operation and is NOT a warrantable defect.

SYMPTOM						SOLUTION
	Jack will not lift load or leaks down excessively	Jack will not lift to its full height	Jack will not lower completely	Jack will not lift smoothly or jack feels spongy	Jack will not hold load or handle rises	
✓						The release valve is not closed. Turn the valve clockwise tightly. If this does not work, remove handle, lubricate handle receptacle and handle end, then retry.
✓	✓					Low on hydraulic fluid. Refill the jack to the correct level of hydraulic fluid, using an approved hydraulic fluid or jack oil.
✓						Pump seals or back-up ring may be defective. Clean hydraulic fluid passages, replace seals and refill hydraulic fluid. (Must be serviced by qualified service center)
	✓		✓			The hydraulic system has trapped air. Open the release valve, pump handle rapidly (4) full strokes to purge air, close release valve.
		✓				Return spring is broken or linkages are binding. Replace spring if broken. Grease pivot shaft and all lift arm linkages.
				✓		Discharge ball is not sealing hydraulic system and oil may be dirty. Manually flush hydraulic system. Open the release valve, as required, to raise and lower the lift arm. Manually raise and lower lift arm.

### LIMITED WARRANTY:

**MOUNTAIN™ BRANDED PRODUCTS ARE WARRANTED AGAINST DEFECTS IN WORKMANSHIP AND MATERIALS FOR A PERIOD OF ONE YEAR FROM DATE OF ORIGINAL PURCHASE.**

Any Mountain™ branded products which fail to give satisfactory service due to defective workmanship or materials will be repaired or replaced at our option during the warranty period.

#### Other important warranty information...

This warranty does not cover damage to equipment or tools arising from alteration, abuse, misuse, damage and does not cover any repairs or replacement made by anyone other than an authorized warranty service center.

The foregoing obligation is our sole liability under this or any implied warranty and under no circumstances shall we be liable for any incidental or consequential damages.

**Note:** Some states do not allow the exclusion or limitation of incidental or consequential damages, so the above limitation or exclusion may not apply to you.

Contact the nearest authorized warranty service center regarding any warranty questions. Be certain to include with any returned products your name and address, evidence of the purchase date, and description of the suspected defect. A complete listing of warranty service centers is included with this manual.

This warranty gives you specific legal rights and you may also have other rights which vary from state to state.

Repair kits and replacement parts are available for many Mountain™ branded products regardless of whether or not the product is still covered by a warranty plan.