



# MTN5503

## 7000lb Capacity

### Quick Lifting Service Jack

## Operating Instructions

**BEFORE USE:** Air may become trapped in the hydraulic system during transit. To purge air:

1. Open release valve by turning handle counterclockwise.
2. Pump handle rapidly 4 full strokes. This will expel air that may have entered oil passages during transit.
3. Close release valve by rotating handle clockwise and pump handle.
4. If lift arm is raised, jack is ready for use. If not, repeat this procedure.

**IMPORTANT:** Before attempting to raise a vehicle, check vehicle service manual for recommended lifting surfaces.

### OPERATION:

1. **To raise load:** Close release valve tightly (by turning handle clockwise). **DO NOT OVERTIGHTEN.** Position jack under load so that saddle will contact load firmly and load is centered so it cannot slip. Operate jack handle until saddle approaches the load. Once again, check to see that saddle is correctly positioned. Raise load to desired height. Place jack stands of appropriate capacity under the vehicle. **DO NOT CRAWL UNDER VEHICLE WHILE LIFTING VEHICLE OR PLACING OR REMOVING JACK STANDS!** Place jack stands at vehicle manufacturer's recommended lift areas that provide stable support for the raised vehicle. Once jack stands are positioned, open the release valve **VERY SLOWLY** (by turning the handle counterclockwise). Lower the load to rest on the jack stands. Then make sure that the release valve on the jack is closed tightly (by turning the handle clockwise).
2. **To lower load:** Re-check to make sure release valve is tightly closed. Then, operate the jack handle until the load is raised enough to remove the jack stands. **DO NOT CRAWL UNDER VEHICLE WHILE LIFTING VEHICLE OR REMOVING THE JACK STANDS!** Once jack stands are removed, open release valve very slowly to lower the vehicle. Lower jack completely so that the vehicle is securely resting on the ground and that the jack no longer makes contact with vehicle.

**CAUTION:** Keep hands or feet away from the hinge mechanism of the jack.



THIS OPERATING MANUAL CONTAINS IMPORTANT DETAILS CONCERNING THE SAFE OPERATION OF THIS TOOL. THE USER MUST READ AND UNDERSTAND THESE DETAILS BEFORE ANY USE OF THE TOOL. THIS MANUAL MUST BE RETAINED FOR FUTURE REFERENCE.

## ! WARNING



THIS IS A LIFTING DEVICE ONLY. DO NOT MOVE OR DOLLY THE VEHICLE WHILE ON THE JACK. IMMEDIATELY AFTER LIFTING, SUPPORT THE VEHICLE WITH APPROPRIATE MEANS.

DO NOT EXCEED RATED CAPACITY. OVERLOADING CAN CAUSE DAMAGE TO OR FAILURE OF THE JACK.

LIFT ONLY ON AREAS OF THE VEHICLE AS SPECIFIED BY THE VEHICLE MANUFACTURER.

CENTER LOAD ON SADDLE PRIOR TO LIFTING. OFF-CENTER LOADS MAY CAUSE DAMAGE TO JACK, LOSS OF LOAD, PROPERTY DAMAGE, PERSONAL OR FATAL INJURY.

THIS JACK IS DESIGNED FOR USE ONLY ON HARD LEVEL SURFACES CAPABLE OF SUSTAINING THE LOAD. USE ON OTHER THAN HARD LEVEL SURFACES CAN RESULT IN JACK INSTABILITY AND POSSIBLE LOSS OF LOAD.

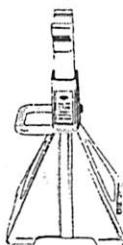
NO ALTERATIONS TO THE JACK SHALL BE MADE.

READ, STUDY AND UNDERSTAND THE OPERATING MANUAL PACKED WITH THIS JACK BEFORE OPERATING.

FAILURE TO HEED THESE WARNINGS MAY RESULT IN LOSS OF LOAD, DAMAGE TO JACK, AND/OR FAILURE RESULTING IN PROPERTY DAMAGE, PERSONAL OR FATAL INJURY.

## ! WARNING

FOR YOUR SAFETY AND TO PREVENT INJURY:



Use Service Jack for lifting purposes ONLY.

Always support vehicle with jack stands.



## Owner/User Responsibility:

The owner and/or user must have a thorough understanding of the manufacturer's operating instructions and warnings before using the service jack. Personnel involved in the use and operation of equipment shall be careful, competent, trained, and qualified in the safe operation of the equipment and its proper use when servicing motor vehicles and their components. Warning information should be emphasized and understood. If the operator is not fluent in English, the manufacturer's instructions and warnings shall be read to and discussed with the operator in the operator's native language by the purchaser/owner, making sure that the operator comprehends its contents.

Owner and/or user must study and maintain for future reference the manufacturer's instructions and pertinent warning information. Owner and/or user is responsible for keeping all warning labels and instruction manuals legible and intact. Replacement labels and literature are available from the manufacturer.

## Inspection:

Visual inspection should be made before each use of the service jack, checking for leaking hydraulic fluid and damaged, loose or missing parts. Each jack must be inspected by a manufacturer's repair facility immediately, if accidentally subjected to an abnormal load or shock. Any jack which appears to be damaged in any way, found to be badly worn, or operates abnormally **MUST BE REMOVED FROM SERVICE** until necessary repairs are made by a manufacturer's authorized repair facility. It is recommended that an annual inspection of the jack be made by a manufacturer's authorized repair facility and that any defective parts, decals or warning labels be replaced with manufacturer's specified parts.

A list of authorized repair facilities is available from the manufacturer.

## Alterations

Because of potential hazards associated with this type of equipment, no alterations shall be made to the product.

## Maintenance

When adding or replacing hydraulic fluid, always use a quality hydraulic fluid. **DO NOT** use brake fluid, alcohol, detergent motor oil, dirty oil or any fluid other than quality hydraulic fluid. Improper fluids can cause internal damage to the jack and improper or unsafe operation.

### ADDING HYDRAULIC FLUID

With the saddle fully lowered and the jack on level ground, remove the filler plug. Hydraulic fluid should be filled to the level of the filler plug hole. If the level is below this hole, add hydraulic fluid as needed.

## Lubrication

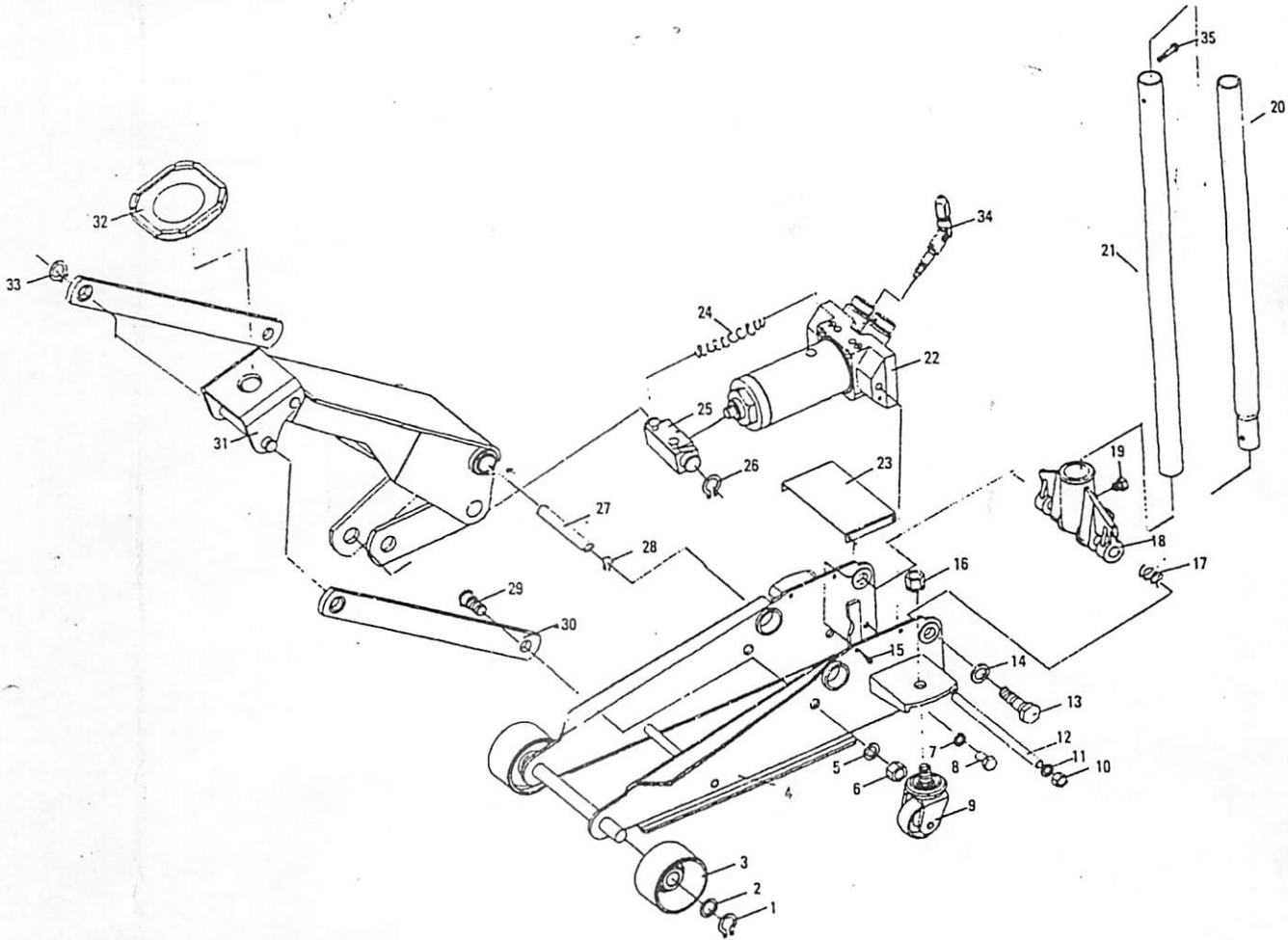
All moving joints require lubrication often. Remove handle and grease the lower end of handle where it rotates in the handle socket. Using a grease gun, grease the lift arm pivot shaft grease fitting until grease appears at the end of the shaft. Oil all lift arm linkages, front wheels and rear casters.



# MTN5503

## 7000lb Capacity

### Quick Lifting Service Jack



Item No.	Part No.	Description	Qty.	Item No.	Part No.	Description	Qty.
1	RS550301	Retaining Ring	2	19	RS550309	Bolt	1
2		Washer	2	20	RS550310	Upper Handle	1
3	RS550302	Wheel	2	21	RS550311	Lower Handle	1
4		Side Plate Assembly	1	22	RS550312	Power Unit Assembly	1
5		Washer 16	2	23		Inspection Plate	1
6		Hex Nut M16	2	24	RS550313	Spring	2
7		Spring Washer	2	25	RS550314	Block Linkage (incl. item #26)	1
8		Hex Bolt M12 x 20	2	26	RS550315	Retaining Ring (incl. w/item #25)	2
9	RS550303	Caster Assembly	2	27		Shaft Arm	1
10		Hex Nut M12	2	28		Retaining Ring	2
11		Washer 12	2	29		Bolt	2
12		Pull Rod	1	30		Long Linkage	2
13	RS550304	Bolt	2	31		Lift Arm Assembly	1
14	RS550305	Spring Washer	2	32	RS550316	Saddle	1
15		Screw	4	33		Retaining Ring	2
16	RS550306	Nut M16	2	34	RS550317	Release Assembly	1
17	RS550307	Torsion Spring	2	35	RS550318	Hex Bolt M6 x 35	1
18	RS550308	Handle Socket	1		RS5503SK	Complete Seal Kit	

**NOTE:** Only items identified by part number are available for purchase.

**LIMITED WARRANTY:**

**MOUNTAIN™ BRANDED PRODUCTS ARE WARRANTED AGAINST DEFECTS IN WORKMANSHIP AND MATERIALS FOR A PERIOD OF ONE YEAR FROM DATE OF ORIGINAL PURCHASE.**

Any Mountain™ branded products which fail to give satisfactory service due to defective workmanship or materials will be repaired or replaced at our option during the warranty period.

**Other important warranty information...**

This warranty does not cover damage to equipment or tools arising from alteration, abuse, misuse, damage and does not cover any repairs or replacement made by anyone other than an authorized warranty service center.

The foregoing obligation is our sole liability under this or any implied warranty and under no circumstances shall we be liable for any incidental or consequential damages.

**Note:** Some states do not allow the exclusion or limitation of incidental or consequential damages, so the above limitation or exclusion may not apply to you.

Contact the nearest authorized warranty service center regarding any warranty questions. Be certain to include with any returned products your name and address, evidence of the purchase date, and description of the suspected defect. A complete listing of warranty service centers is included with this manual.

This warranty gives you specific legal rights and you may also have other rights which vary from state to state.

Repair kits and replacement parts are available for many Mountain™ branded products regardless of whether or not the product is still covered by a warranty plan.