



MTN5505

5 Ton Heavy Duty Service Jack

Operating Instructions:

IMPORTANT: Sometimes during shipment and handling, air gets into the hydraulic system, causing poor lifting performance. Before initial operation, purge any air from the system by fully opening release (Turn handle knob (#80) counter-clockwise). Then, while holding the saddle down, pump pedal (#63) rapidly several times.

RAISING JACK:

1. Turn handle knob (#80) clockwise until resistance is felt to close release valve. Do not over tighten.
2. Place jack directly under object to be lifted. Depress the pedal (#63) repeatedly until the saddle contacts the lift point. Make sure saddle lifts weight firmly and centrally. Check positioning under slight load to confirm jack or load will not slip.
3. Raise jack by pumping handle until desired height is reached. After lifting, secure load by appropriate means. Do NOT use service jack as the only means of support.

LOWERING JACK

1. Slowly turn handle knob (#80) counter-clockwise. Speed of descent is controlled by amount release valve is turned.

Maintenance:

Checking hydraulic oil level

1. Open release valve (turn handle knob (#80) counter-clockwise) and push ram to its lowest position.
2. Remove filler plug (#36).
3. Fill the reservoir with clean hydraulic jack oil. Do not use hydraulic brake oil or hydraulic brake fluid.
4. Reinstall filler plug.

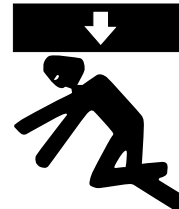
Lubrication:

1. Add lubricating oil to all moving parts as needed.

SPECIFICATIONS:

Capacity	5 Ton
Low Height	6"
Raised Height	22-1/4"
Length	55-7/8"
Chassis Width	6-3/4"
Handle Length	39-5/8"
Saddle Diameter	5-1/4"
Front Wheel	4-5/16" x 1-3/4"
Rear Caster	2-3/4" x 1-3/16"
Shipping Weight	234 Lbs.

!WARNING

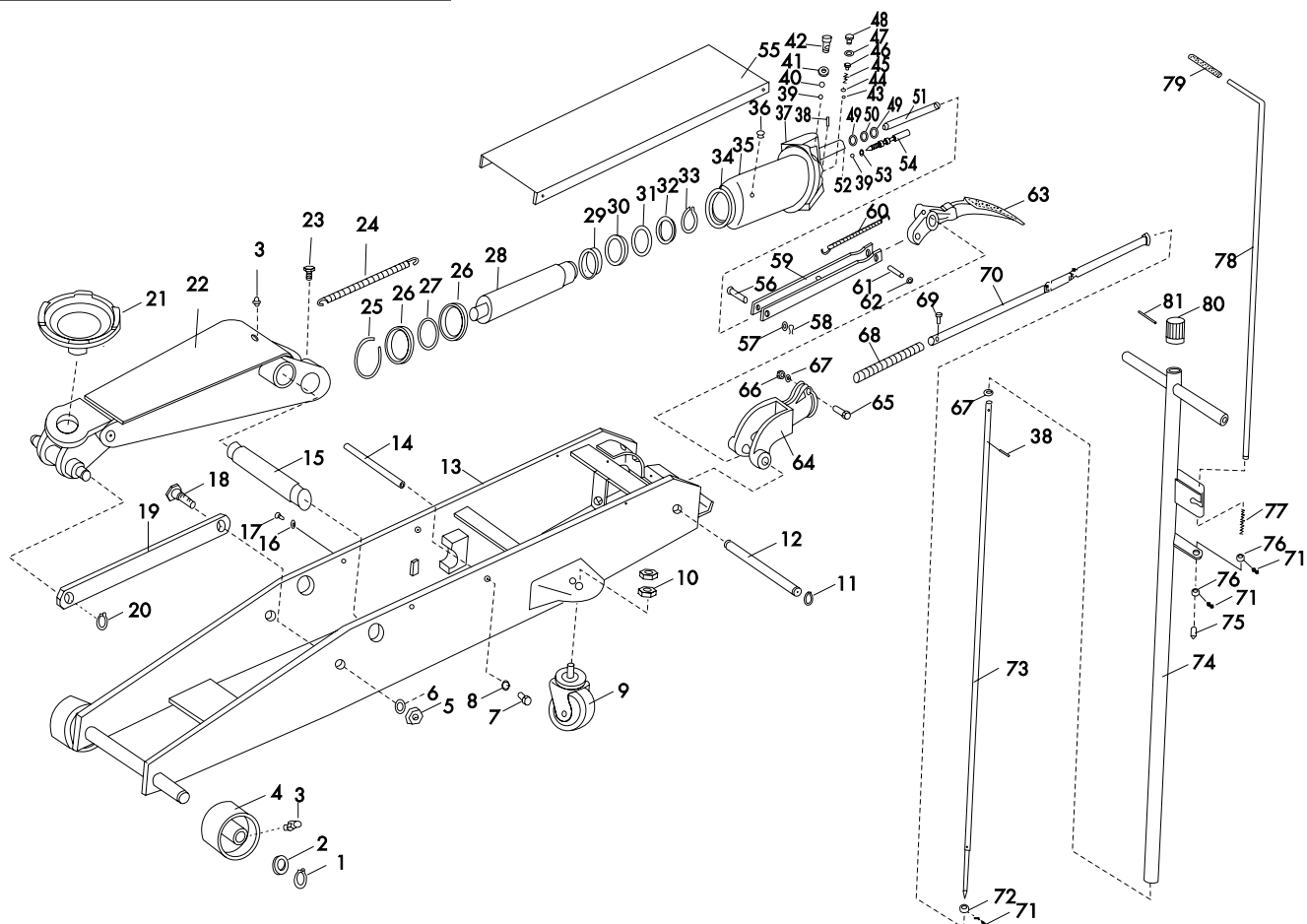


1. THIS IS A LIFTING DEVICE ONLY. DO NOT MOVE OR DOLLY THE VEHICLE WHILE ON THE JACK.
2. POSITION THIS JACK TO ONLY LIFT ON THE AREAS OF THE VEHICLE AS SPECIFIED BY THE VEHICLE MANUFACTURER.
3. AFTER LIFTING THE VEHICLE, ALWAYS SUPPORT THE LOAD WITH APPROPRIATELY RATED VEHICLE SUPPORT STANDS BEFORE WORKING ON THE VEHICLE.
4. DO NOT OVERLOAD THIS JACK BEYOND ITS RATED CAPACITY. OVERLOADING CAN CAUSE DAMAGE TO OR FAILURE OF THE JACK.
5. THIS JACK IS DESIGNED ONLY FOR USE ON HARD LEVEL SURFACES CAPABLE OF SUSTAINING THE LOAD. USE ON OTHER THAN HARD LEVEL SURFACES CAN RESULT IN JACK INSTABILITY AND POSSIBLE LOSS OF LOAD.
6. CENTER LOAD ON JACK SADDLE BEFORE LIFTING VEHICLE. OFF-CENTER LOADS AND LOADS LIFTED WHEN THE JACK IS NOT LEVEL CAN CAUSE LOSS OF LOAD OR DAMAGE TO THE JACK.
7. STUDY, UNDERSTAND AND FOLLOW ALL INSTRUCTIONS IN THIS MANUAL BEFORE OPERATING THE JACK.
8. FAILURE TO HEED THESE WARNINGS MAY RESULT IN LOSS OF LOAD, DAMAGE TO THE JACK AND/OR JACK FAILURE RESULTING IN PERSONAL INJURY OR PROPERTY DAMAGE.



MTN5505

5 Ton Heavy Duty Service Jack



Item No.	Part No.	Description	Qty	Item No.	Part No.	Description	Qty	Item No.	Part No.	Description	Qty
1	RS550501	Snap Ring	2	28		Pressure Piston	1	56		Shaft	1
2		Front Wheel Washer	2	29		Pressure Piston Ring	1	57		Washer	1
3	RS550502	Oil Nipple	2	30		Sealing Washer	1	58		Pin	1
4	RS550503	Front Wheel	2	31		"O" Ring	1	59		Connecting Bar	1
5		Nut	2	32		"O" Ring Retainer	1	60	RS550508	Spring	1
6		Spring Washer	2	33		Snap Ring	1	61	RS550509	Pedal Pin	1
7		Bolt	2	34		Cylinder	1	62	RS550510	Snap Ring	2
8		Washer	2	35		Housing	1	63	RS550511	Pedal	1
9	RS550504	Rear Wheel	2	36		Oil Filler Plug	1	64		Handle Socket	1
10	RS550505	Nut	4	37		Cylinder Base	1	65		Handle Socket Bolt	1
11		Snap Ring	2	38		Pin	2	66		Nut	1
12		Shaft	1	39		Steel Ball 6 mm	2	67		Washer	1
13		Frame	1	40		Steel Ball 9 mm	1	68		Spring	1
14		Shaft	1	41		Washer	1	69		Bolt	1
15		Arm Shaft	1	42		Oil plug screw	1	70		Universal Joint	1
16		Washer	4	43		Steel Ball 4 mm	1		RS550512	Handle Assembly	1
17		Bolt	4	44		Spring Seat	1			(includes items 38, 67, 71-81)	
18		Rod Link Bolt	2	45		Spring	1	71		Bolt	3
19		Rod Link	2	46		Over Pressure Valve	1	72		Washer	1
20		Snap Ring	1	47		Sealing Washer	1	73		Convey Rod	1
21	RS550506	Saddle	1	48		Over Pressure	1	74		Handle	1
22		Arm	1	49		Valve Plug Screw	1	75		Pin	1
	RS550507	Power Pump Assembly	1	50		"O" Ring	2	76		Washer	2
		(includes items 25-54)		51		Washer	1	77		Spring	1
23		Bolt	1	52		Cylinder Pump Plunger	1	78		Control Rod	1
24		Spring	1	53		Cylinder Pump	1	79		Plastic Cover	1
25		Snap Ring	1	54		"O" Ring	1	80		Handle Knob	1
26		Washer	2	55		Release Valve Rod	1	81		Pin	1
27		"O" Ring	1			Cover	1		RS5505SK	Complete Seal Kit	

NOTE: Only items identified by part number are available for purchase.

LIMITED WARRANTY:**MOUNTAIN™ BRANDED PRODUCTS ARE WARRANTED AGAINST DEFECTS IN WORKMANSHIP AND MATERIALS FOR A PERIOD OF ONE YEAR FROM DATE OF ORIGINAL PURCHASE.**

Any Mountain™ branded products which fail to give satisfactory service due to defective workmanship or materials will be repaired or replaced at our option during the warranty period.

Other important warranty information...

This warranty does not cover damage to equipment or tools arising from alteration, abuse, misuse, damage and does not cover any repairs or replacement made by anyone other than an authorized warranty service center.

The foregoing obligation is our sole liability under this or any implied warranty and under no circumstances shall we be liable for any incidental or consequential damages.

Note: Some states do not allow the exclusion or limitation of incidental or consequential damages, so the above limitation or exclusion may not apply to you.

Contact the nearest authorized warranty service center regarding any warranty questions. Be certain to include with any returned products your name and address, evidence of the purchase date, and description of the suspected defect. A complete listing of warranty service centers is included with this manual.

This warranty gives you specific legal rights and you may also have other rights which vary from state to state.

Repair kits and replacement parts are available for many Mountain™ branded products regardless of whether or not the product is still covered by a warranty plan.