

1½ TON HEAVY DUTY FLOOR SERVICE JACK

FLOOR SERVICE
JACK

ARTICLE NO. CAP.
61-85251 (TONS)
 1½

FORM NO. 787

MONTGOMERY
WARD

owner's guide

and PARTS LIST



CAUTION

THIS JACK IS DESIGNED FOR JACKING PURPOSES ONLY. AFTER JACKING, ALWAYS USE SAFETY STANDS TO SUPPORT LOAD BEFORE MAKING REPAIRS. FOR YOUR SAFETY-DO NOT OVERLOAD THIS JACK BEYOND ITS RATED CAPACITY.

OPERATING INSTRUCTIONS

Installing the Handle

Back out lower Hex Head Bolt and insert handle into handle base as shown. Rotate handle slightly to make sure cross pin fully engages into Release Valve slot. Turn Hex Head Bolt into Handle Base all the way until snug. Screw end must seat into groove on handle. Check to be sure handle is properly engaged by trying to "jerk" it out of Handle Base.

IMPORTANT: Sometimes during shipment and handling, air gets into the hydraulic system, causing poor lifting performance. Purge any air from the system by fully opening Release Valve (turn handle counter-clockwise all the way); then, while holding the saddle down, operate pump handle rapidly several times.

Positioning under Load & Raising Jack

1. Close Release Valve to a **SNUG-TIGHT** position turning handle **CLOCKWISE**. (DO NOT OVERTIGHTEN — this could cause damage to Valve operation).
2. Position jack under load so that saddle will contact load firmly and is centered by slip lugs so it cannot slip.
3. Operate jack handle until saddle approaches contact with load. Once again, check to see that saddle is correctly positioned and load is "LOCKED IN" by Slip Lugs. Raise load to desired height.

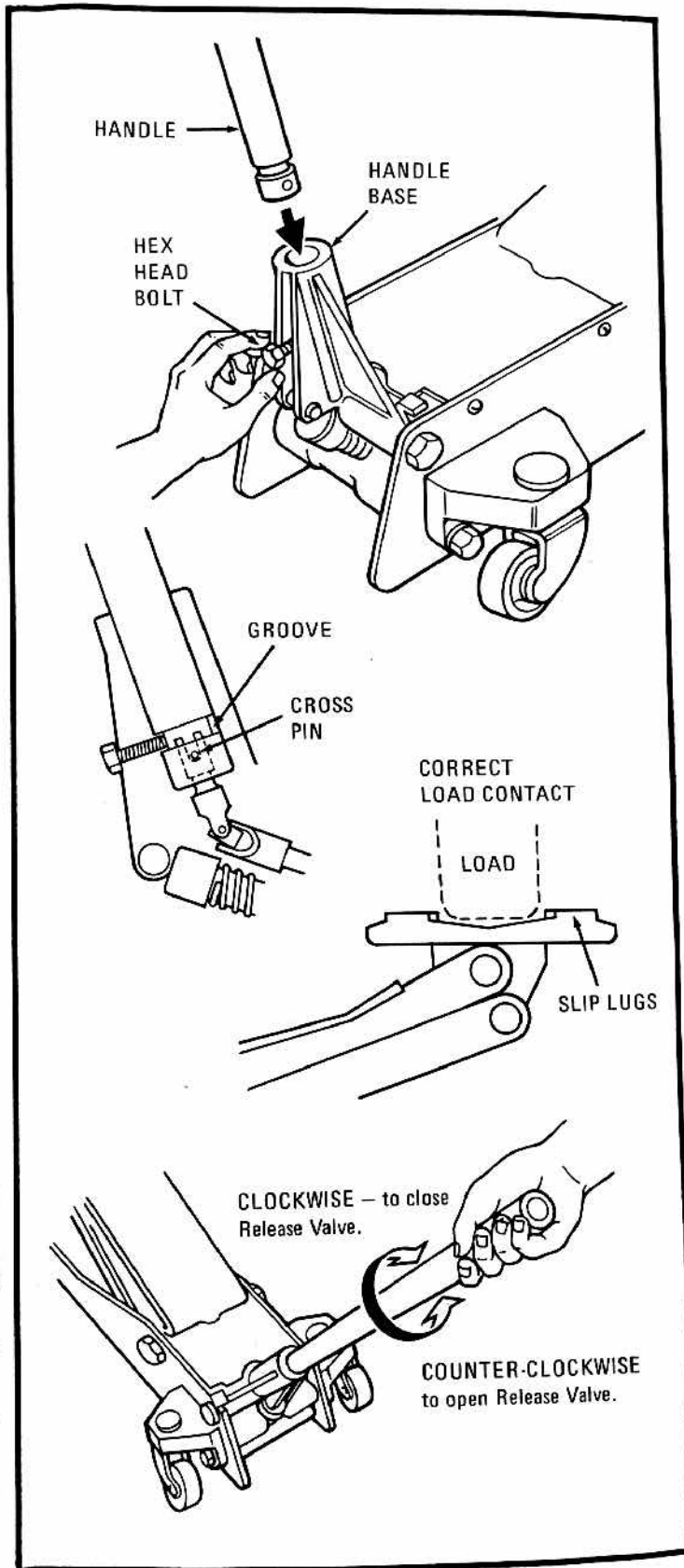
Lowering the Jack

Open Release Valve **VERY SLOWLY** by turning handle **COUNTER-CLOCKWISE** until it stops. (DO NOT TRY TO TURN FURTHER after you feel it stop — to do so could damage the jack).

MAINTENANCE PROCEDURES

IMPORTANT: When adding or replacing oil, always use a good grade hydraulic jack oil. Avoid mixing types of oil. DO NOT use Brake Fluid, Alcohol, Glycerine, detergent motor oil or dirty oil. Improper fluid can cause serious internal damage to jack. When adding oil, be **VERY CAREFUL** not to permit dirt or any foreign matter to get into the system.

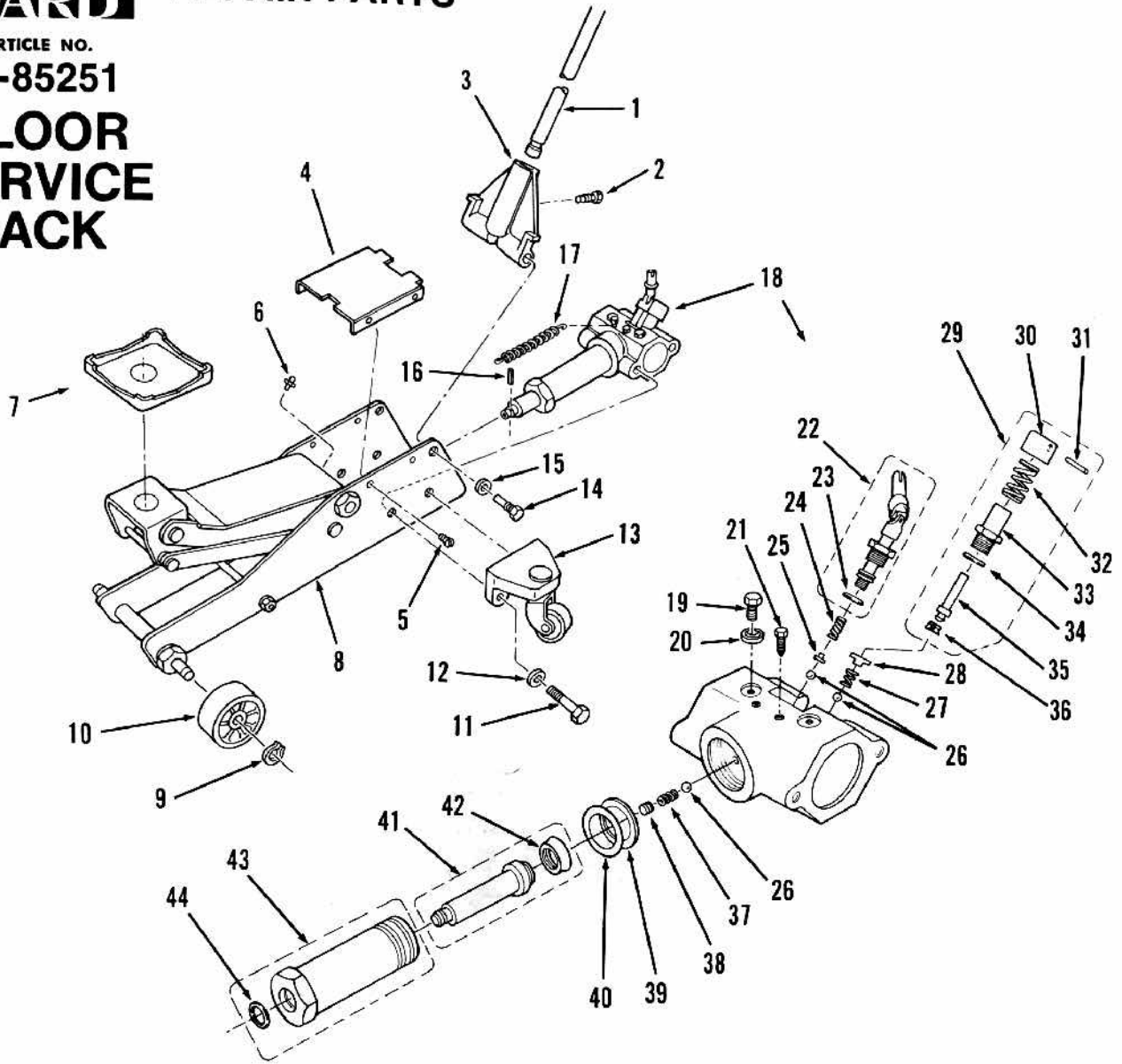
Check Ram and Plunger every 3 months for any signs of rust or corrosion. Clean as needed and wipe with an oily cloth. When not using the jack, always leave the Saddle all the way down. Add grease to Lift Arm Fitting at least twice yearly, depending upon usage.



ARTICLE NO.

61-85251

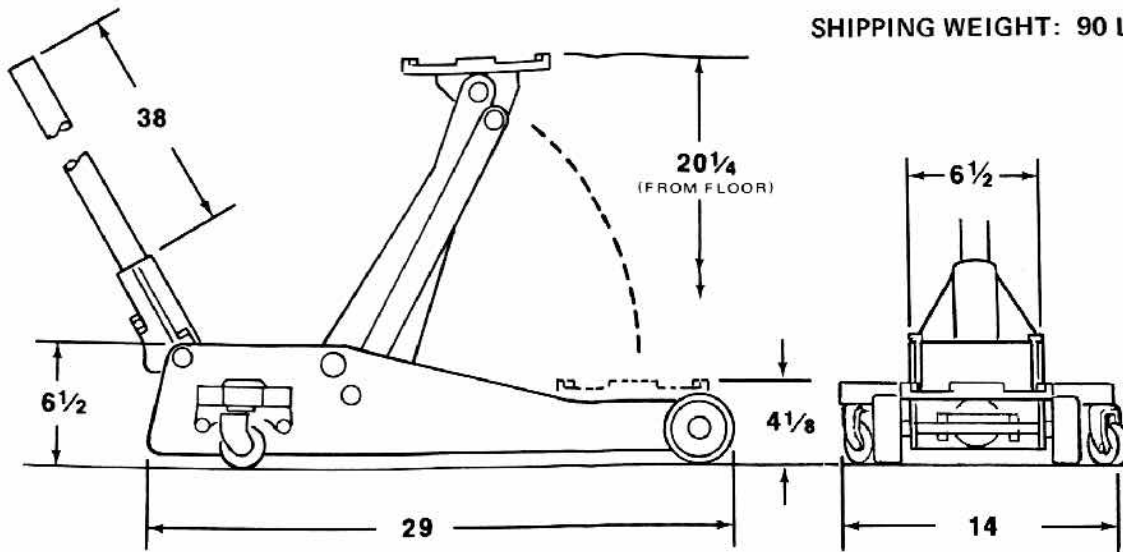
**FLOOR
SERVICE
JACK**



INDEX NO.	PART NO.	DESCRIPTION	INDEX NO.	PART NO.	DESCRIPTION	INDEX NO.	PART NO.	DESCRIPTION
1	217006	Handle Assy	20	8011	Stat-o-seal	37	4005	Spring
2	3048	Bolt	21	3002	Screw	38	3005	Retainer Screw
3	217050	Handle Base Assy	22	217015	Release Valve Assy	39	217031	Gasket - Cylinder
4	217383	Cover Plate			<i>includes:</i>	40	217034	Back-up Ring
5	3049	Screw	23	8018	"O" Ring	41	217045	Ram Assy
6	13001	Grease Fitting						<i>includes:</i>
7	217166	Saddle	24	4004	Spring	42	8024	Seal - "U" Cup
8	217025	Frame & Lift Arm Assy	25	213016	End Cap			
9	12036	Snap Ring	26	9001	Check Ball - 7/32"	43	217030	Cylinder Assy
10	217207	Wheel	27	4009	Spring			<i>includes:</i>
11	3051	Bolt	28	217033	Retainer	44	12037	"O" Ring
12	2047	Lockwasher	29	217020	Pump Assy			
13	217080	Rear Caster Assy			<i>includes:</i>			
14	217014	Bolt	30	217023	Cap - Pump Piston			
15	2046	Lockwasher	31	7034	Roll Pin			
16	7034	Roll Pin	32	4012	Spring			
17	4011	Spring	33	217022	Pump Body			
18	217035	Oil Block Assy - complete	34	12038	"O" Ring			
		<i>includes:</i>	35	217021	Pump Piston			
19	3043	Bolt	36	8026	Seal - "U" Cup			

SPECIFICATIONS

CAPACITY: 1½ TONS
SHIPPING WEIGHT: 90 LBS.



**MONTGOMERY
WARD**

ARTICLE NO.

61-85251

**1½ TON CAPACITY
HEAVY DUTY
FLOOR SERVICE JACK**

Made in U.S.A.

PATENT NO.
4018421