

2 TON HEAVY DUTY  
FLOOR SERVICE JACK

MONTGOMERY  
**WARD**

owner's guide  
and PARTS LIST

FLOOR SERVICE  
JACK

ARTICLE NO.	CAP. (TONS)
61-85046	2

FORM 944 06770053





# CAUTION

THIS JACK IS DESIGNED FOR JACKING PURPOSES ONLY. AFTER JACKING, ALWAYS USE SAFETY STANDS TO SUPPORT LOAD BEFORE MAKING REPAIRS. FOR YOUR SAFETY—DO NOT OVERLOAD THIS JACK BEYOND ITS RATED CAPACITY.

## OPERATING INSTRUCTIONS

### Installing the Handle

Back out lower Hex Head Bolt and insert handle into handle base as shown. Rotate handle slightly to make sure cross pin fully engages into Release Valve slot. Turn Hex Head Bolt into Handle Base all the way until snug. Screw end must seat into groove on handle. Check to be sure handle is properly engaged by trying to "jerk" it out of Handle Base.

**IMPORTANT:** Sometimes during shipment and handling, air gets into the hydraulic system, causing poor lifting performance. Purge any air from the system by fully opening Release Valve (turn handle counter-clockwise all the way); then, while holding the saddle down, operate pump handle rapidly several times.

### Positioning under Load & Raising Jack

1. Close Release Valve to a SNUG-TIGHT position turning handle CLOCKWISE. (DO NOT OVERTIGHTEN — this could cause damage to Valve operation).
2. Position jack under load so that saddle will contact load firmly and is centered by slip lugs so it cannot slip.
3. Operate jack handle until saddle approaches contact with load. Once again, check to see that saddle is correctly positioned and load is "LOCKED IN" by Slip Lugs. Raise load to desired height.

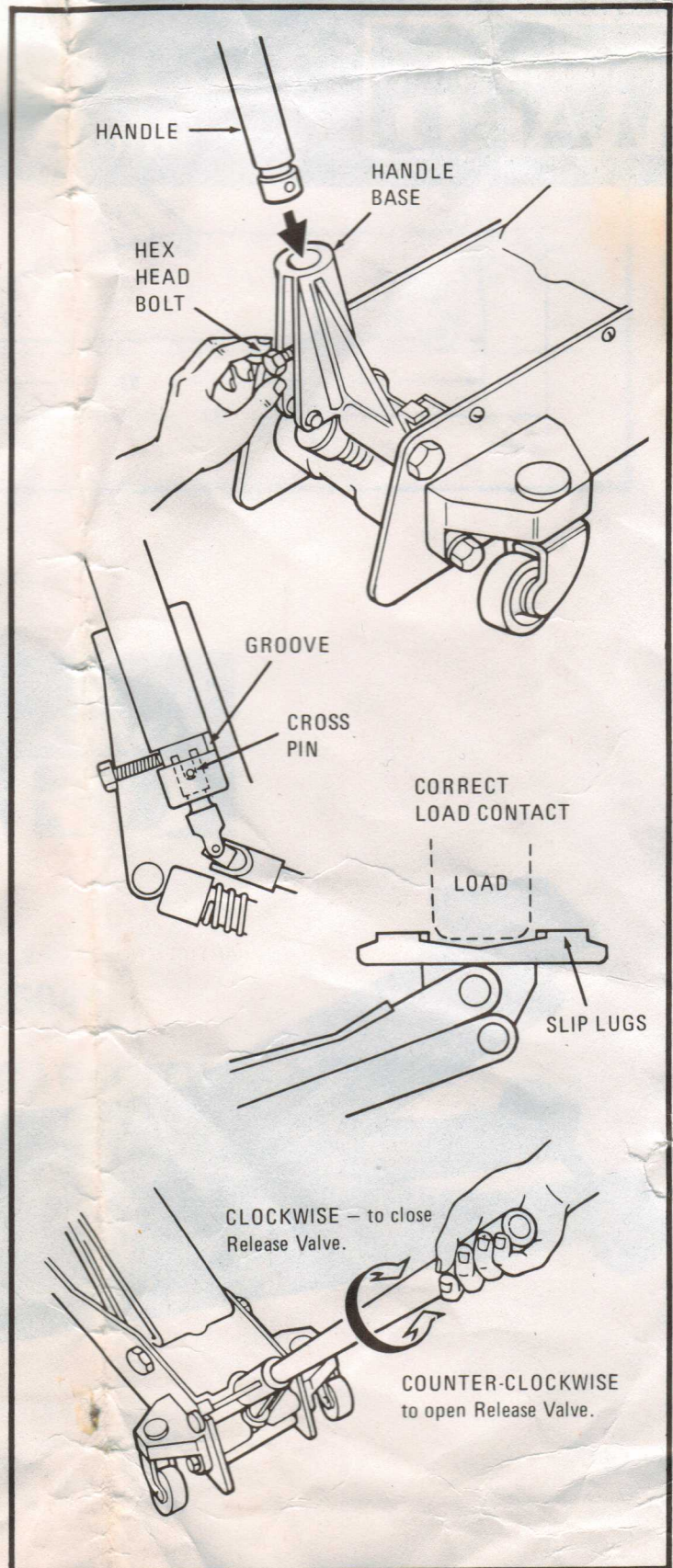
### Lowering the Jack

Open Release Valve VERY SLOWLY by turning handle COUNTER-CLOCKWISE until it stops. (DO NOT TRY TO TURN FURTHER after you feel it stop — to do so could damage the jack).

## MAINTENANCE PROCEDURES

**IMPORTANT:** When adding or replacing oil, always use a good grade hydraulic jack oil. Avoid mixing types of oil. DO NOT use Brake Fluid, Alcohol, Glycerine, detergent motor oil or dirty oil. Improper fluid can cause serious internal damage to jack. When adding oil, be VERY CAREFUL not to permit dirt or any foreign matter to get into the system.

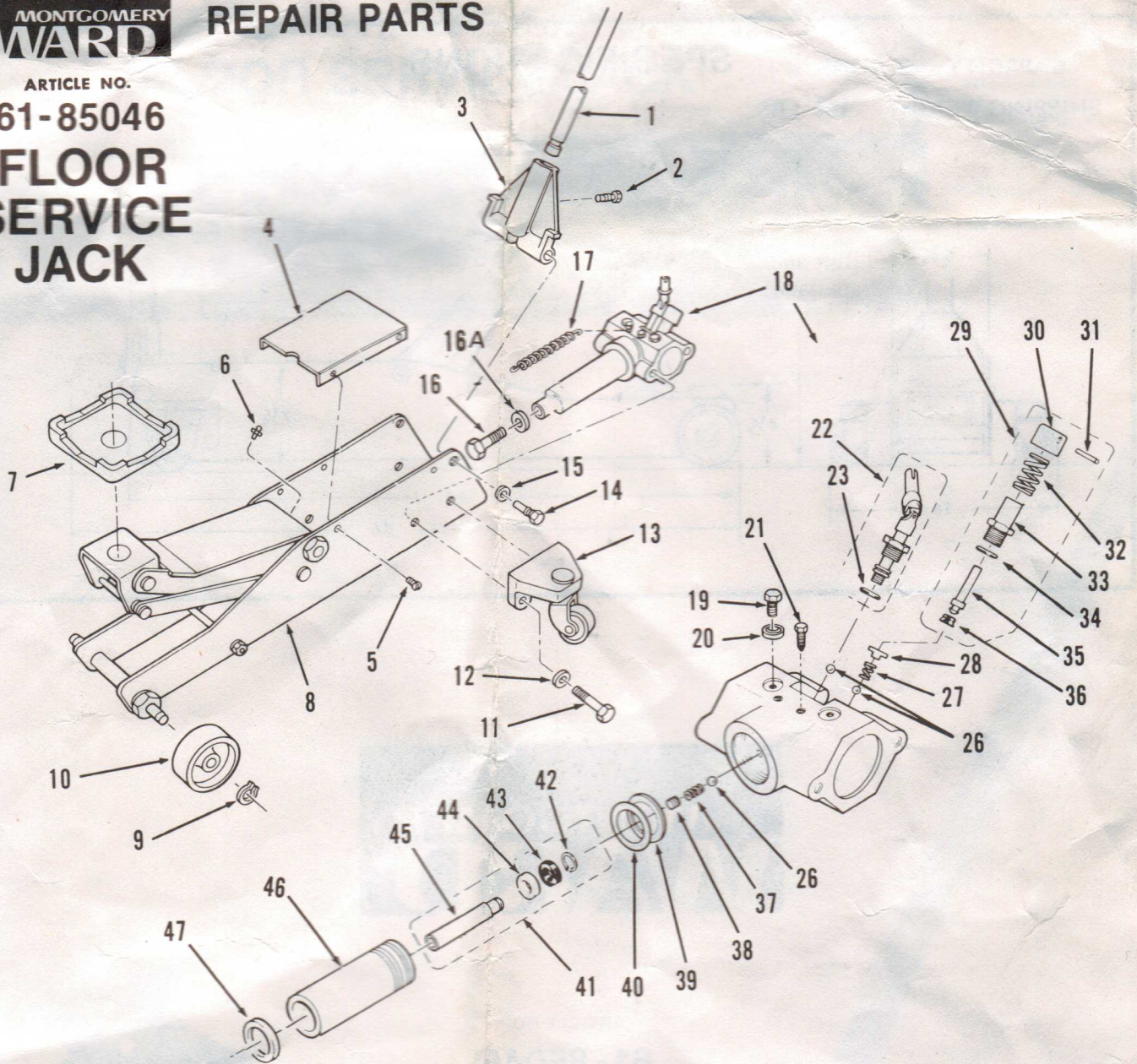
Check Ram and Plunger every 3 months for any signs of rust or corrosion. Clean as needed and wipe with an oily cloth. When not using the jack, always leave the Saddle all the way down. Add grease to Lift Arm Fitting at least twice yearly, depending upon usage.





ARTICLE NO.

**61-85046  
FLOOR  
SERVICE  
JACK**



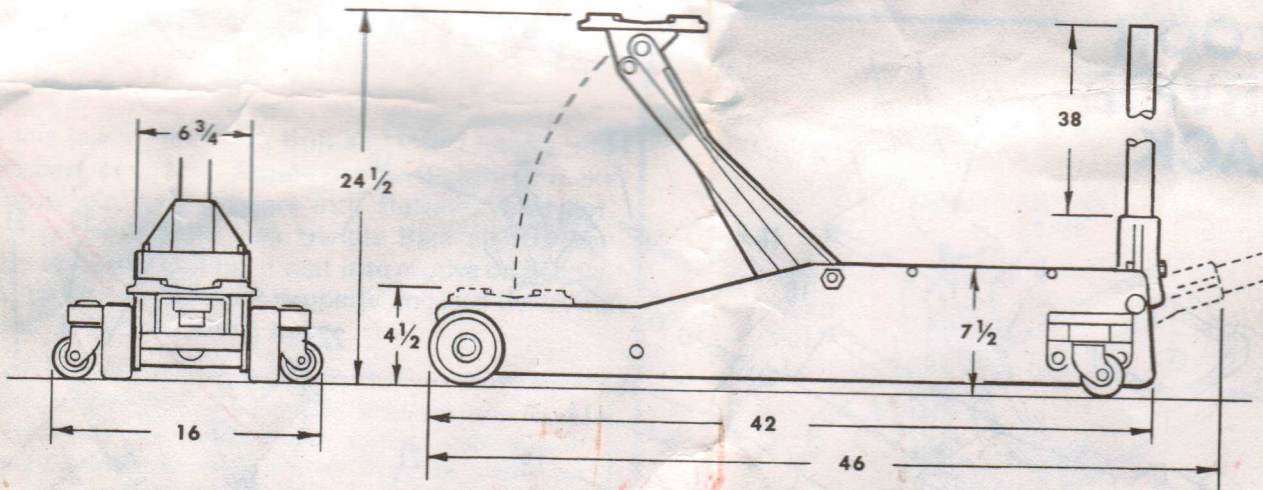
INDEX NO.	PART NO.	DESCRIPTION	INDEX NO.	PART NO.	DESCRIPTION	INDEX NO.	PART NO.	DESCRIPTION
1	220004	Handle Assy	20	8011	Stat-o-seal	37	4005	Spring
2	3048	Bolt	21	3002	Screw	38	3005	Retainer Screw
3	220010	Handle Base Assy (Red)	22	217015	Release Valve Assy <i>includes:</i>	39	217031	Gasket - Cylinder
4	220006	Cover Plate (Red)			"O" Ring	40	217034	Back-up Ring
5	3049	Screw	23	8018		41	217065	Ram Assy <i>includes:</i>
6	13001	Grease Fitting				42	12048	Snap Ring
7	217163	Saddle-square cast	24			43	8024	Seal - "U" Cup
8	220005	Frame & Lift Arm Assy (Red)	25			44	217067	Retainer Ring
9	220008	Snap Ring	26	9001	Check Ball - 7/32"	45	217066	Ram
10	220007	Wheel (Red)	27	4039	Spring	46	217032	Cylinder
11	3051	Bolt	28	217033	Retainer	47	12052	Split Ring
12	2047	Lockwasher	29	217020	Pump Assy <i>includes:</i>			
13	217080	Rear Caster Assy (Red)			Cap - Pump Piston			
14	217014	Bolt	30	217023	Roll Pin			
15	2046	Lockwasher	31	7034	Spring			
16	3054	Bolt	32	4012	Pump Body			
16A	2046	Lockwasher	33	217022	"O" Ring			
17	4011	Spring	34	12038	Pump Piston			
18	217035	Oil Block Assy - complete <i>includes:</i>	35	217021	Seal - "U" Cup			
19	3043	Bolt	36	8026				



CAPACITY: 2 TONS

## SPECIFICATIONS

SHIPPING WEIGHT: 150 LBS.



**MONTGOMERY  
WARD**

ARTICLE NO.

**61-85046**

**2 TON CAPACITY  
HEAVY DUTY**

**FLOOR SERVICE JACK**

Made in U.S.A.

PATENT NO.  
4018421