

MOHAWK

MADE IN THE USA



MODEL USL-6000

6,000 LB. CAPACITY UNIVERSAL SCISSOR LIFT MANUAL

**THANK YOU
FOR SENDING IN YOUR
WARRANTY REGISTRATION
CARD**

**MOHAWK SERVICE
DEPARTMENT**

- INSTALLATION
- OPERATION
- MAINTENANCE
- PARTS

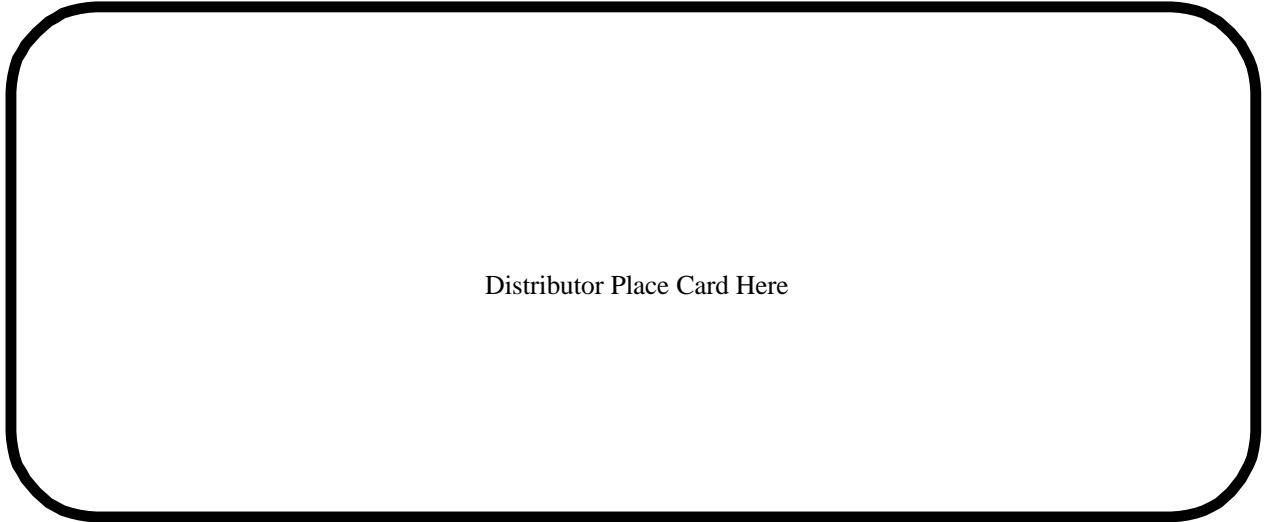


MOHAWK RESOURCES LTD.

P.O. BOX 110
65 VROOMAN AVENUE
AMSTERDAM, NY 12010
TOLL FREE : 1-800-833-2006
LOCAL : 1-518-842-1431
FAX : 1-518-842-1289
INTERNET: www.MOHAWKLIFTS.com
E-MAIL: Techsupport@MOHAWKLIFTS.com

HAVE A QUESTION?

**Call your local
Mohawk distributor
For parts, service and technical support.**



Please have this unit's model and serial number when calling for service.

Model Number _____

Serial Number _____

OR CONTACT:

MOHAWK RESOURCES LTD.

65 Vrooman Ave.

P.O. Box 110

Amsterdam, NY 12010

Toll Free: 1-800-833-2006

Local: 1-518-842-1431

Fax: 1-518-842-1289

Internet: www.MOHAWKLIFTS.com

E-Mail: Service@MOHAWKLIFTS.com

MOHAWK WARRANTIES

EFFECTIVE DATE: 1/1/2002

GENERAL WARRANTY INFORMATION:

MOHAWK'S OBLIGATION UNDER THIS WARRANTY IS LIMITED TO REPAIRING OR REPLACING ANY PART OR PARTS RETURNED TO THIS FACTORY, TRANSPORTATION CHARGES PREPAID, WHICH PROVE UPON INSPECTION TO BE DEFECTIVE AND WHICH HAVE NOT BEEN MISUSED. DAMAGE OR FAILURE TO ANY PART DUE TO FREIGHT DAMAGE OR FAULTY MAINTENANCE IS NOT COVERED UNDER THIS WARRANTY. MOHAWK RESERVES THE RIGHT TO DECLINE RESPONSIBILITY WHEN REPAIRS HAVE BEEN MADE OR ATTEMPTED BY OTHERS. THIS WARRANTY DOES NOT COVER DOWNTIME EXPENSES INCURRED WHEN UNIT IS IN REPAIR. THE MODEL NAME AND SERIAL NUMBER OF THE EQUIPMENT MUST BE FURNISHED WITH ALL WARRANTY CLAIMS. THIS WARRANTY STATEMENT CONTAINS THE ENTIRE AGREEMENT BETWEEN MOHAWK RESOURCES LTD. AND THE PURCHASER UNLESS OTHERWISE SPECIFICALLY EXPRESSED IN WRITING. THIS NON-TRANSFERABLE WARRANTY APPLIES TO THE ORIGINAL PURCHASER ONLY. THIS WARRANTY IS APPLICABLE TO UNITS LOCATED ONLY IN THE UNITED STATES OF AMERICA AND CANADA. CONTACT MOHAWK RESOURCES LTD. FOR SPECIFIC WARRANTY PROVISIONS FOR UNITS LOCATED OUTSIDE OF THESE COUNTRIES.

5-YEAR WARRANTY:

THIS WARRANTY IS APPLICABLE TO THE FOLLOWING MOHAWK LIFTS ONLY: A-7, SYSTEM I, LMF-12, TP-15, TP-18, TP-20, TP-26, TP-30 AND STANDARD OPTIONS.

3-YEAR WARRANTY:

THIS WARRANTY IS APPLICABLE TO THE FOLLOWING MOHAWK LIFTS ONLY: TSL-7, PL-6000, TR-19, TR-25, FL-25, TR-33, TR-35, TR-40, TR-50, TR-60, TR-75, TR-110, MP-SERIES AND RP-SERIES MOBILE COLUMN LIFTS, SL-SERIES SCISSOR LIFTS, FP-SERIES LIGHT DUTY FOUR POST LIFTS, TL-SERIES LIFTS AND STANDARD OPTIONS.

2-YEAR WARRANTY:

THIS WARRANTY IS APPLICABLE TO THE FOLLOWING MOHAWK LIFTS ONLY: USL-6000 AND STANDARD OPTIONS.

1-YEAR WARRANTY:

THIS WARRANTY IS APPLICABLE TO THE FOLLOWING MOHAWK LIFTS ONLY: HR-6, TOMAHAWK, TD-1000, CT-1000 AND STANDARD OPTIONS.

STRUCTURAL COMPONENTS:

ALL STRUCTURAL AND MECHANICAL COMPONENTS OF THIS UNIT ARE GUARANTEED FOR THE ABOVE STATED TIME FRAME, SPECIFIC TO MODEL, FROM THE DATE OF INVOICE, AGAINST DEFECTS IN WORKMANSHIP AND/OR MATERIALS WHEN LIFT IS INSTALLED AND USED ACCORDING TO SPECIFICATIONS.

SEE MOHAWK'S "EXTENDED LIFETIME CYLINDER WARRANTY" FOR SPECIFIC WARRANTY PROVISIONS FOR HYDRAULIC CYLINDERS. THE "EXTENDED LIFETIME CYLINDER WARRANTY" IS APPLICABLE TO THE FOLLOWING MOHAWK LIFTS ONLY: A-7, SYSTEM I, LMF-12, TP-15, TP-18, TP-20, TP-26, TP-30, MP-SERIES AND TL-SERIES LIFTS.

POWER UNIT:

ALL POWER UNIT COMPONENTS (MOTOR, PUMP AND RESERVOIR) ARE GUARANTEED FOR THE ABOVE STATED TIME FRAME, SPECIFIC TO MODEL, FROM THE DATE OF INVOICE, AGAINST DEFECTS IN WORKMANSHIP AND/OR MATERIALS WHEN THE LIFT IS INSTALLED AND USED ACCORDING TO SPECIFICATIONS.

ELECTRICAL COMPONENTS:

ALL ELECTRICAL COMPONENTS (EXCLUDING MOTOR) ARE GUARANTEED FOR ONE YEAR FOR PARTS ONLY (EXCLUDING LABOR), FROM THE DATE OF INVOICE, AGAINST DEFECTS IN WORKMANSHIP AND/OR MATERIALS WHEN THE LIFT IS INSTALLED AND USED ACCORDING TO SPECIFICATIONS.

PNEUMATIC (AIR) COMPONENTS:

ALL PNEUMATIC (AIR) COMPONENTS (I.E. AIR CYLINDERS AND POPPET AIR VALVES) ARE GUARANTEED FOR ONE YEAR FOR PARTS ONLY (EXCLUDING LABOR), FROM THE DATE OF INVOICE, AGAINST DEFECTS IN WORKMANSHIP AND/OR MATERIALS WHEN THE LIFT IS INSTALLED AND USED ACCORDING TO SPECIFICATIONS.

WARRANTY EXCEPTIONS:

ALL "SPECIAL" LIFTS AND/OR "CUSTOMIZED" OPTIONS ON THIS UNIT ARE GUARANTEED FOR ONE YEAR FOR PARTS ONLY (EXCLUDING LABOR), FROM THE DATE OF INVOICE, AGAINST DEFECTS IN WORKMANSHIP AND/OR MATERIALS WHEN THE LIFT IS INSTALLED AND USED ACCORDING TO SPECIFICATIONS.

THIS WARRANTY SUPERSEDES ALL OTHER WARRANTY POLICIES PREVIOUSLY STATED AND IN ALL OTHER MOHAWK PRODUCT SPECIFIC LITERATURE.

CONTENTS

TOPIC	PAGE / FIGURE
<u>1-TEXT</u>	
APPENDAGES	1-1
SPECIFICATIONS	1-2
SETUP	1-3
PACKING LIST	1-4
SAFETY TIPS	1-5
PRE-OPERATION CHECK LIST / LIFTING PROCEDURES	1-6
MAINTENANCE PROCEDURES	1-7
TROUBLE SHOOTING	1-8
SERVICE CHART	1-9
MAINTENANCE CHART	1-10
<u>2-FIGURES / DIAGRAMS</u>	
USL-6000 LIFT LAYOUT	2-1
VEHICLE PLACEMENT	2-2
HYDRAULIC TUBING & FITTING LIST	2-3
PNEUMATIC TUBING & FITTING LIST	2-4
ELECTRICAL SCHEMATIC	2-5
RELIEF VALVE ADJUSTMENT PROCEDURE	2-6
<u>3-PARTS</u>	
USL-6000 FRONT VIEW	3-1
USL-6000 REAR VIEW	3-2
CYLINDER ASSEMBLY	3-3
LOCK ASSEMBLY	3-4
POWER UNIT DOLLY ASSEMBLY	3-5
PARTS LIST	3-6
<u>4-TOW BAR KIT (OPTION)</u>	
RELOCATION PROCEDURE	4-1
TOW BAR SETUP POSITION	4-2
TOW BAR PULLING POSITION	4-3
TOW BAR ASSEMBLY	4-4
PARTS LIST	4-5

ALL INFORMATION, ILLUSTRATIONS, AND SPECIFICATIONS IN THIS MANUAL ARE BASED ON THE LATEST PRODUCT INFORMATION AVAILABLE AT THE TIME OF PRINTING. WE RESERVE THE RIGHT TO MAKE CHANGES AT ANY TIME WITHOUT NOTICE.

IMPORTANT SAFETY INSTRUCTIONS

When using your garage equipment, basic safety precautions should always be followed, including the following:

1. Read all instructions.
2. Do not operate equipment with a damaged cord or if the equipment has been dropped or damaged - until it has been examined by a qualified serviceman.
3. Do not let cord or hoses come in contact with hot manifolds or moving fan blades.
4. If an extension cord is necessary, a cord with a current rating equal to or more than that of the equipment should be used. Cords rated for less current than the equipment may overheat. Care should be taken to arrange the cord so that it will not be tripped over or pulled.
5. Always unplug equipment from electrical outlet when not in use. Never use the cord to pull the plug from the outlet. Grasp plug and pull to disconnect
6. To reduce the risk of fire, do not operate equipment in the vicinity of open containers of flammable liquids (gasoline). **WARNING:** This equipment has internal arcing and sparking parts which should not be exposed to flammable vapors. This equipment is only suitable for installation in a garage having sufficient air circulation to be considered a non-hazardous location.
7. Adequate ventilation should be provided when working on operating internal combustion engines.
8. Keep hair, loose clothing, fingers, and all parts of body away from moving parts.
9. To reduce the risk of electric shock, do not use on wet surfaces or expose to rain.
10. Use only as described in this manual. Use only manufacturer's recommended attachments.
11. **ALWAYS WEAR SAFETY GLASSES.** Everyday eyeglasses only have impact resistant lenses, they are NOT safety glasses.

SAVE THESE INSTRUCTIONS

APPENDAGES

RECOMMENDATIONS BY THE INDIVIDUAL USER OR USING ORGANIZATION FOR IMPROVING THIS PUBLICATION OR ANY ASPECT OF THE PRODUCT ARE ENCOURAGED AND SHOULD BE FORWARDED IN WRITING TO :

**MOHAWK RESOURCES LTD.
PRODUCT IMPROVEMENTS
P.O. BOX 110
65 VROOMAN AVENUE
AMSTERDAM, NY, 12010**

THIS IS NOT A VEHICLE LIFTING PROCEDURE MANUAL AND NO ATTEMPT IS MADE OR IMPLIED HEREIN TO INSTRUCT THE USER IN LIFTING METHODS PARTICULARLY TO THE INDIVIDUAL APPLICATION OF THE EQUIPMENT DESCRIBED IN THIS MANUAL. RATHER, THE CONTENTS OF THIS MANUAL ARE INTENDED AS A BASE LINE FOR OPERATION, MAINTENANCE, TROUBLE SHOOTING, AND PARTS LISTING OF THE UNIT AS IT STANDS ALONE AND AS IT IS INTENDED AND ANTICIPATED TO BE USED IN CONJUNCTION WITH OTHER EQUIPMENT.

PROPER APPLICATION OF THE EQUIPMENT DESCRIBED HEREIN IS LIMITED TO THE PARAMETERS DETAILED IN THE SPECIFICATIONS AND THE USES SET FORTH IN THE DESCRIPTIVE PASSAGES. ANY OTHER PROPOSED APPLICATION OF THIS EQUIPMENT SHOULD BE DOCUMENTED AND SUBMITTED IN WRITING TO MOHAWK RESOURCES LTD. FOR EXAMINATION. THE USER ASSUMES FULL RESPONSIBILITY FOR ANY EQUIPMENT DAMAGE, PERSONAL INJURY, OR ALTERATION OF THE EQUIPMENT DESCRIBED IN THIS MANUAL OR ANY SUBSEQUENT DAMAGES.

DO NOT WELD, APPLY HEAT, OR MODIFY THIS EQUIPMENT IN ANY MANNER WITHOUT WRITTEN AUTHORIZATION FROM **MOHAWK RESOURCES LTD.** CERTAIN ALLOY OR HEAT-TREATED COMPONENTS MAY BE DISTORTED OR WEAKENED, RESULTING IN AN UNSAFE CONDITION.

MOHAWK RESOURCES LTD. IS NOT RESPONSIBLE FOR DISTORTIONS WHICH RESULT FROM WELDING ON THIS EQUIPMENT AFTER MANUFACTURING IS COMPLETED. UNAUTHORIZED WELDING, APPLICATION OF HEAT, OR MODIFICATION OF THIS EQUIPMENT VOIDS ANY AND / OR ALL APPLICABLE WARRANTIES COVERING THIS EQUIPMENT.

ALL WARRANTIES APPLICABLE TO THIS EQUIPMENT ARE CONTINGENT ON STRICT ADHERENCE TO THE MAINTENANCE SCHEDULES AND PROCEDURES IN THIS MANUAL.

KEEP ALL SHIELDS AND GUARDS IN PLACE. INSURE ALL SAFETY MECHANISMS ARE OPERABLE. KEEP HANDS, FEET, AND CLOTHING AWAY FROM POWER-DRIVEN AND MOVING PARTS.

WARNING

- DO NOT INSTALL THIS UNIT IN A PIT OR DEPRESSION DUE TO FIRE OR EXPLOSION RISK

IMPORTANT NOTE

A LEVEL FLAT FLOOR IS REQUIRED FOR PROPER OPERATION OF THIS UNIT. IF A FLOOR IS OF QUESTIONABLE SLOPE/PITCH, CONSIDER RELOCATING THE UNIT TO A MORE SUITABLE LOCATION. THIS UNIT MUST BE USED ON A STRUCTURALLY SOUND FLAT FLOOR.

CAUTION

THE EQUIPMENT DESCRIBED IN THIS MANUAL COULD BE POTENTIALLY DANGEROUS IF IMPROPERLY OR CARELESSLY OPERATED. FOR THE PROTECTION OF ALL PERSONS AND EQUIPMENT, ONLY COMPETENTLY TRAINED OPERATORS WHO ARE CRITICALLY AWARE OF THE PROPER OPERATING PROCEDURES, POTENTIAL DANGERS, AND SPECIFIC APPLICATION OF THIS EQUIPMENT SHOULD BE ALLOWED TO TOUCH THE CONTROLS AT ANY TIME.

SAFE OPERATION OF THIS EQUIPMENT IS DEPENDENT ON USE, IN COMPLIANCE WITH THE OPERATION PROCEDURES OUTLINED IN THIS MANUAL ALONG WITH THE MAINTENANCE AND INSPECTION PROCEDURES WITH CONSIDERATION OF PREVAILING CONDITIONS.

THE EQUIPMENT DESCRIBED IN THIS MANUAL IS NEITHER DESIGNED NOR INTENDED FOR ANY APPLICATION ALONE OR IN CONJUNCTION WITH ANY OTHER EQUIPMENT THAT INVOLVES THE LIFTING OR MOVING OF **PERSONS**.

ALWAYS CONSULT THE VEHICLE LIFTING GUIDE FOR THE PROPER LIFTING POINTS ON ANY VEHICLE. THESE GUIDES ARE AVAILABLE FROM THE VEHICLE MANUFACTURERS.

AFTER LIFTING THE VEHICLE TO THE DESIRED HEIGHT, ALWAYS LOWER THE UNIT ONTO THE MECHANICAL SAFETIES. THE FORMING OF GOOD OPERATIONAL WORK HABITS WILL ELIMINATE OVERSIGHTS IN THE USE OF PROVIDED SAFETY DEVICES.

USL-6000 SPECIFICATIONS

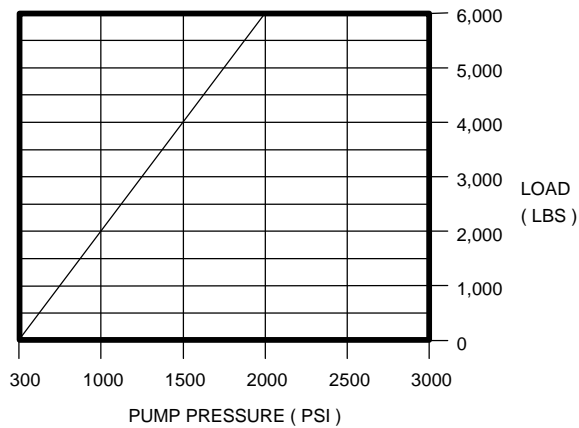
USL-6000 SPECIFICATIONS

LIFT TYPE / SCISSOR	ELECTRIC / HYDRAULIC
LIFTING CAPACITY	6,000 LBS.
LIFTING SPEED APPROX.	90 SECONDS
LIFTING HEIGHT (PAD) STROKE	72 1/2 INCHES
OVERALL LENGTH	98 1/2 INCHES
OVERALL WIDTH	45 3/8 INCHES
MINIMUM PLATFORM HEIGHT	4 3/4 INCHES
WIDTH BETWEEN PLATFORMS	23 3/4 INCHES
PLATFORM LENGTH	68 INCHES
PLATFORM WIDTH	9 INCHES
MECHANICAL LOCKS	MULTI-POSITION EVERY 6 INCHES
SHIPPING WEIGHT	1,950 LBS.

POWER UNIT SPECIFICATIONS

BRAND NAME	MONARCH
MODEL	M-4509-0104
POWER UNIT TYPE	VERTICAL
MOTOR VOLTAGE, VAC	115 VAC
F.L.A. AT RATED CAPACITY	13.6 AMP
MOTOR HORSEPOWER	1
MOTOR PHASE	SINGLE
MOTOR CYCLE / HERTZ	60
MOTOR SPEED (R.P.M.)	1725
PUMP FLOW (G.P.M.)	0.9 @ 1725 R.P.M.
RELIEF VALVE SETTING	2300 P.S.I.
MAX WORKING PRESSURE	2000 P.S.I.
RESERVOIR CAPACITY	3 GALLONS
HYDRAULIC FLUID MEDIUM	DEXRON III

PERFORMANCE TABLE



SUGGESTED SITE SELECTION / BAY SIZE

WIDTH	DEPTH	HEIGHT
9 FEET	18 FEET	10 FEET

NOTE

THE PLACEMENT OF THE UNIT IS DETERMINED BY THE TYPE (LENGTH, WIDTH, HEIGHT) OF VEHICLE BEING SERVICED.

MOHAWK MODEL USL-6000 SETUP

IMPORTANT

READ THIS MANUAL IN ITS ENTIRETY. BE FAMILIAR WITH PART NAMES AND HAVE A GOOD UNDERSTANDING OF HOW THIS UNIT IS ASSEMBLED AND HOW INDIVIDUAL PARTS OPERATE BEFORE ASSEMBLING THE UNIT.

NOTE

THE PLACEMENT OF THE UNIT IS DETERMINED BY THE TYPE (LENGTH, WIDTH, HEIGHT) OF VEHICLE BEING SERVICED. ALLOW AMPLE ROOM (THREE TO FOUR FEET) FOR WALKWAYS ETC.

REVIEW THE **PACKING LIST (PG 1-4)** IN THIS MANUAL TO VERIFY ALL SUPPLIED PARTS. IF MISSING PARTS ARE NOTED, THEY CAN BE OBTAINED BY CONTACTING YOUR LOCAL MOHAWK DISTRIBUTOR, BY CALLING **1-800-833-2006** OR FAXING TO **1-518-842-1289**. REQUESTS CAN ALSO BE SENT BY E-MAIL TO **TECHSUPPORT@MOHAWKLIFTS.COM**

CUT ALL BANDING AND DISCARD. REMOVE LIFT AND SHIPPING CRATE FROM PALLET. REMOVE POWER UNIT DOLLY SUB-ASSEMBLY FROM CRATE AND ASSEMBLE WHEELS. **SEE POWER UNIT DOLLY ASSEMBLY DIAGRAM (PG 3-5)**

REMOVE THE TANK PLUG ON THE POWER UNIT RESERVOIR AND DISCARD.

VERIFY FLUID LEVEL. LEVEL SHOULD BE 1/2 INCH BELOW UPPER TANK PORTS ON THE POWER UNIT RESERVOIR WHEN UNIT IS FULLY LOWERED. INSTALL THE BREATHER CAP.

CONNECT INCOMING AIR SUPPLY TO POPPET VALVE BESIDE POWER UNIT. **SEE PNEUMATIC TUBING & FITTING LIST (PG 2-4)**.

CONNECT HYDRAULIC LINE AND AIR LINE FROM POWER UNIT TO CONNECTIONS AT LIFT. ENSURE THAT ALL FITTINGS ARE TIGHTENED. **SEE HYDRAULIC AND PNEUMATIC TUBING & FITTING LISTS (PG 2-3 & 2-4)**.

CONNECT THE PIVOT PADS TO THE PLATFORMS USING THE PIVOT PAD PINS AND WASHERS. NOTE SPECIFIC PLACEMENT OF WASHERS. **(REFER TO PG 3-2)**

CONNECT INCOMING POWER TO POWER UNIT. **SEE ELECTRICAL SCHEMATIC (PG 2-5)**

BLEEDING HYDRAULIC SYSTEM:

RAISE UNIT FULLY. FOR NEXT STEP, HAVE CLOTH AVAILABLE TO WIPE UP DRIPPING HYDRAULIC FLUID.

- CAUTION -

THE FOLLOWING PROCEDURE CAN BE INHERENTLY DANGEROUS IF NOT PERFORMED TO THE FOLLOWING PROCEDURE. **ALWAYS USE CAUTION WHEN BLEEDING UNIT**, AND NEVER REMOVE PLUGS FULLY. BE AWARE AND STAY CLEAR OF ANY PROJECTING FLUID.

SLOWLY AND CAREFULLY LOOSEN

(DO NOT REMOVE) PLUGS ON ENDS OF BOTH BARRELS OF CYLINDERS UNTIL AIR BUBBLES FORM (APPROXIMATELY A QUARTER TO HALF A FULL TURN). WAIT FOR CYLINDERS TO FINISH VENTING TRAPPED AIR. TIGHTEN PLUGS. FULLY LOWER UNIT.

RAISE UNIT FULLY AND OBSERVE SMOOTH LIFTING. IF LIFT IS VIBRATING WHILE LIFTING, REPEAT PROCEDURE FOR BLEEDING HYDRAULIC SYSTEM.

FULLY CYCLE THE UNIT THREE TIMES TO FAMILIARIZE YOURSELF WITH THE FUNCTIONS OF THE UNIT, AND TO ALLOW ALL AIR TO BE REMOVED FROM THE HYDRAULIC SYSTEM. ENSURE PROPER LOCK ENGAGEMENT & TEST LOCK DISENGAGEMENT BY PRESSING THE LOCK RELEASE BUTTON ON THE POWER UNIT DOLLY ASSEMBLY.

USL-6000 PACKING LIST:**USL-6000 MAIN COMPONENTS, PN #006-010-000**

ITEM	PART NO.	DESCRIPTION	QTY
1	006-010-007	USL-6000 SCISSOR LIFT ASSEMBLY	1
2	601-600-030	PALLET, 50" x 100"	1
3	006-010-008	SHIPPING CRATE PACKING	1
4	006-010-040	TOW BAR SUPPORT WELDMENT (W/O TOW BAR OPT)	1

SHIPPING CRATE PACKING LIST, PN #006-010-008

ITEM	PART NO.	DESCRIPTION	QTY
1	006-010-027	POWER UNIT DOLLY ASSEMBLY	1
2	601-620-031	RUBBER BLOCK, 1" THK x 4" x 4"	8
3	006-010-177	HEIGHT ADAPTER, 3"	4
4	006-010-054	LIFTING PAD WELDMENT, USL-6000	4
5	601-630-001	PAINT, SPRAY, RED	1
6	601-630-002	PAINT, SPRAY, YELLOW	1
7	006-010-063	MANUAL ASSEMBLY, USL-6000	1
8	025-002-126	HEIGHT ADAPTER BRACKET	1
9	006-010-064	PARTS BAG	1
10	006-010-156	PIVOT PAD PIN, 2" HEX x 1 13/16" LG	4
11	006-010-155	PIVOT PAD, 3/4" THK x 6" x 15 3/8"	4
12	006-010-046	HOSE ASSEMBLY, 1/4" x 18' LONG (HYD)	1
13	006-010-432	HOSE, PLASTIC, BLACK, 1/4" TUBE x 234" LONG (AIR)	1
14	601-800-054	SAFETY WARNING PLACARD, PLASTIC	1
15	600-640-018	BOLT, 1/2" x 3" (W/ TOW BAR OPTION)	1
16	600-680-001	NUT, 1/2" (W/ TOW BAR OPTION)	1
17	601-170-007	FEMALE PLUG (FOR 220 VAC OPTION ONLY)	1

PARTS BAG, PN #006-010-064

ITEM	PART NO.	DESCRIPTION	QTY
1	006-010-184	MAIN PIVOT SHIM (PIVOT PAD WASHER) 1 1/2"	4
2	600-710-010	WASHER, FLAT, 1"	2
3	601-310-005	BREATHER CAP	1
4	601-520-002	ELBOW, 90°, 1/8" NPT TO 1/4" TUBE	1
5	601-520-003	ELBOW, 90°, 1/4" NPT TO 1/4" TUBE	1
6	601-420-007	ELBOW, 90°, 3/8" MALE NPT TO #6 JIC	1
7	601-420-017	ELBOW, 90°, #6 ORB TO #6 JIC	1
8	601-420-121	ELBOW, 90°, 1/4" FEMALE NPT TO 1/8" MALE NPT	1
9	601-510-004	POPPET VALVE, PNEUMATIC, 3-WAY	1
10	601-510-005	POPPET VALVE PUSH BUTTON W/ ALLEN WRENCH	1
11	601-530-034	QUICK COUPLER, FEMALE NPT, SLEEVE TYPE (AIR)	1
12	601-420-109	QUICK COUPLER, 3/8" FEM NPT, SLEEVE TYPE (HYD)	1
13	601-600-029	PLASTIC TIE, BLACK, 8 1/2" LONG	25
14	006-010-197	FRONT PIVOT PAD SHIM WASHER, 16 GA X 2 1/2 OD	2

SAFETY TIPS

PLEASE POST THESE SAFETY TIPS IN A PLACE WHERE THE OPERATOR WILL BE CONSTANTLY REMINDED OF THEIR IMPORTANCE. ALWAYS REFER TO THE LIFTS SPECIFIC SAFETY, OPERATING AND MAINTENANCE INSTRUCTIONS.

(A COPY IS INCLUDED IN THE PARTS BOX)

WARNING !!

ALWAYS PLACE VEHICLE'S CENTER OF GRAVITY OVER INDICATED MARK ON PLATFORMS TO ENSURE SAFE LEVEL LIFTING. OFF CENTER LIFTING CAN RESULT IN A DANGEROUS AND UNSTABLE CONDITION THAT COULD CAUSE DAMAGE TO THE VEHICLE AND MAY RESULT IN BODILY HARM TO THE OPERATOR. (REFER TO FIGURE 2-2 FOR PROPER PLACEMENT OF VEHICLE)

- OPERATING VALVES, SWITCHES, AND LOCKING DEVICES ARE DESIGNED FOR MAXIMUM SAFETY. **NEVER** ATTEMPT TO BLOCK OR OVERRIDE THEM.
- **NEVER** OVERLOAD YOUR LIFT BEYOND STATED LIFTING CAPACITY.
- **DO NOT** ALLOW CUSTOMERS OR BY-STANDERS TO OPERATE THE LIFT OR TO BE IN A LIFTING AREA DURING ITS OPERATION. ONLY PROPERLY TRAINED PERSONNEL SHOULD BE ALLOWED TO OPERATE THE UNIT. EVERY EFFORT SHOULD BE MADE TO KEEP FEET AND ARMS FROM BENEATH THE UNIT AND AWAY FROM PINCH POINTS WHILE RAISING AND LOWERING LIFT.
- **NEVER** RAISE A VEHICLE WITH PERSONS INSIDE.
- **NEVER** ATTEMPT TO OPERATE A LIFT IF IT APPEARS TO BE MALFUNCTIONING OR IF BROKEN OR DAMAGED PARTS ARE EVIDENT.
- BE SURE WORK AREA AROUND THE LIFT IS CLEAR AND FREE OF OBSTRUCTIONS. (DEBRIS, GREASE, OIL, ETC.)
- PERFORM THE PRE-OPERATION CHECK LIST, PER INSTRUCTIONS, BEFORE RAISING VEHICLE TO DESIRED HEIGHT.
- BEFORE REMOVING VEHICLE FROM THE LIFT AREA, REMOVE THE RUBBER LIFT PADS, HEIGHT ADAPTERS AND / OR SWING ARMS FROM BENEATH THE VEHICLE.
- ALWAYS REMOVE TOW BAR AND TOW BAR SUPPORT FROM LIFT PRIOR TO POSITIONING VEHICLE OVER LIFT AND PRIOR TO RAISING LIFT.
- **DO NOT** STACK RUBBER LIFTING PADS MORE THAN 2 HIGH.

PRE - OPERATION CHECK LIST

TRAINED OPERATOR

- THE OPERATOR MUST BE FULLY TRAINED AND QUALIFIED TO SAFELY AND EFFECTIVELY OPERATE THIS EQUIPMENT OF THIS SPECIFIC MAKE AND MODEL.

ABSENCE OF OBSTRUCTIONS

- THE TOTAL WORK AREA MUST BE FREE OF ANY AND ALL OBSTRUCTIONS AND BE GENERALLY CLEAN. (FREE OF OIL AND DEBRIS)

VISUAL INSPECTION

- THOROUGHLY INSPECT THE UNIT WITH A TRAINED EYE, NOTING ANY PROBLEM AREAS. REPORT ANY QUESTIONABLE ITEMS AND MAKE ADJUSTMENTS/ REPAIRS AS NEEDED.

NO LOAD PERFORMANCE CHECK

- ALL MECHANICAL SAFETIES OPERATE PROPERLY AND CONSISTENTLY.
- NO EXTERNAL FLUID LEAKS.
- NO BLEED DOWN.
- EFFORTLESS AND SIMULTANEOUS MOVEMENT.
- LEVEL LIFTING.
- CONTROLS FUNCTION PROPERLY.
- TOW BAR AND TOW BAR SUPPORT ARE REMOVED FROM UNIT.

PREVIOUS DAY' S OPERATION REPORT

- VERIFY WITH SUPERVISOR THAT THERE WERE NO PROBLEMS EXPERIENCED THE PREVIOUS DAY. IF THERE WERE ANY PROBLEMS, VERIFY THAT ALL NECESSARY REPAIRS HAVE BEEN COMPLETED.

LIFTING PROCEDURES

OPERATION

PERFORM PRE-OPERATION CHECK LIST ITEM BY ITEM.

ENSURE UNIT IS COMPLETELY LOWERED.

POSITION THE VEHICLE ONTO THE UNIT. ENSURE THAT TIRES STRADDLE LIFT PLATFORMS WITH ADEQUATE CLEARANCE

POSITION THE VEHICLE AS INDICATED BY THE MFG'S RECOMMENDED LIFT POINTS. REFER TO VEHICLE FRAME LIFT POINT GUIDE SUPPLIED WITH LIFT.

NOTE

- ALIGN THE CENTER OF GRAVITY (C.G.) OF THE VEHICLE WITH THE MARK INDICATED ON THE LIFTING PLATFORMS.

POSITION SWING ARMS, LIFTING PADS, HEIGHT ADAPTERS, RUBBER PADS AND/OR ANY COMBINATION THEREOF UNDER FRAME CONTACT POINTS OF THE VEHICLE TO BE RAISED. FOLLOW INSTRUCTIONS FOR RAISING UNIT. RAISE UNIT APPROXIMATELY THREE INCHES. ENSURE PROPER PAD ENGAGEMENT WITH VEHICLE.

TO RAISE

- ENGAGE THE UP-BUTTON ON THE POWER UNIT.
- RAISE VEHICLE TO THE DESIRED WORKING HEIGHT.
- LOWER THE UNIT ONTO THE MECHANICAL SAFETIES.

TO LOWER

- INSPECT THE LIFTING AREA TO INSURE THAT ALL PERSONNEL AND DEBRIS HAVE BEEN CLEARED FROM THE LIFTING AREA.
- ENGAGE THE UP-BUTTON ON THE POWER UNIT.
- RAISE UNIT APPROXIMATELY TWO TO THREE INCHES.
- DISENGAGE THE MECHANICAL SAFETIES BY PRESSING AND HOLDING THE LOCK RELEASE BUTTON.
- LOWER UNIT TO THE DESIRED WORKING HEIGHT BY PULLING THE DOWN HANDLE.
- LOWER THE UNIT ONTO THE MECHANICAL SAFETIES BY RELEASING THE LOCK RELEASE BUTTON AND CONTINUING TO HOLD THE DOWN HANDLE.
- IF WORK IS COMPLETE, CONTINUE LOWERING THE UNIT TO FLOOR WHILE MAINTAINING THE LOCK RELEASE BUTTON.

MAINTENANCE PROCEDURES

QUALIFIED MAINTENANCE PERSONNEL ONLY

DAILY

- PERFORM THE PRE-OPERATION CHECK LIST.
- REPORT ANY AND ALL EQUIPMENT MALFUNCTIONS IMMEDIATELY.
- CLEAN ALL MOVING PARTS. IF OXIDIZATION IS OCCURRING USE A LIGHT LUBRICANT. (WD - 40 OR EQUIVALENT)
- KEEP AREA AROUND THIS EQUIPMENT FREE OF DIRT, SAND, WATER, ETC.

WEEKLY

PERFORM THE DAILY OPERATION CHECK LIST.

WIPE CLEAN, THE CYLINDERS' WIPER SEALS. REMOVE ANY WEEPING OIL AND DUST.

VERIFY FLUID LEVEL. WITH THE UNIT FULLY LOWERED, THE FLUID LEVEL WILL BE 1/2 INCH BELOW THE BREATHER CAP PORT. USE DEXRON III AS REPLACEMENT FLUID.

CYCLE UNIT TO FULL HEIGHT, NOTE ANY UNUSUAL NOISES, INSPECT UNIT FOR WORN OR DEFORMED PARTS.

MONTHLY

INSPECT ALL HYDRAULIC COMPONENTS FOR LEAKS, DEFORMATION, WEAR OR CORROSION.

TIGHTEN ALL FASTENERS AND HYDRAULIC FITTINGS AS REQUIRED.

1. ALL O - RING BOSS FITTING JAM NUTS ARE TO BE TIGHTENED TO 15 FOOT POUNDS TORQUE.
2. ALL PIPE FITTINGS, IF LEAKING ARE TO BE REMOVED, RE-SEALED, AND RE - INSTALLED. (SELECT - UNITE THREAD SEALANT OR EQUIVALENT ON FITTING THREADS)

INSPECT ALL BUSHINGS FOR UNUSUAL OR EXCESSIVE WEAR.

SEMI- ANNUAL TRAINING

QUALIFY / RE-QUALIFY ALL PERSONNEL IN THE SAFE OPERATION OF THIS UNIT.

ANNUALLY

REPLACE AND RE-BLEED THE HYDRAULIC FLUID. ALWAYS USE A CLEAN FUNNEL AND FILTER. USE DEXRON III HYDRAULIC FLUID.

INSPECT ALL BUSHINGS FOR UNUSUAL OR EXCESSIVE WEAR.

PERFORM THE DAILY, WEEKLY, AND MONTHLY MAINTENANCE PROCEDURES.

TROUBLE SHOOTING

WARNING : NEVER ATTEMPT TO LOOSEN HYDRAULIC FITTINGS, OR OVERRIDE SAFETY DEVICES IN AN ATTEMPT TO CORRECT A PROBLEM. ALL TESTS ARE TO BE PERFORMED WITH **NO** VEHICLE.

NOT RAISING LOAD	
POSSIBLE CAUSE	SOLUTION
LOW HYDRAULIC FLUID LEVEL	LOWER UNIT. REMOVE RESERVOIR BREATHER CAP. FILL UNIT TO WITHIN 1/2 INCH BELOW PORT. USE DEXRON III TRANSMISSION / HYDRAULIC FLUID.
PRESSURE RELIEF ADJUSTMENT	REFER TO POWER UNIT SPECIFICATIONS.
PRESSURE RELIEF CONTAMINATION	REFER TO POWER UNIT SPECIFICATIONS. REMOVE AND CLEAN DEBRIS FROM VALVE ASSEMBLY.
VOLTAGE TO POWER UNIT	REFER TO POWER UNIT SPECIFICATIONS. CONSULT AN ELECTRICIAN
UNIT OVERLOADED	VEHICLE TOO HEAVY TO BE RAISED
NOT LOWERING	
MECHANICAL LOCKS ENGAGED	RAISE UNIT. DISENGAGE MECHANICAL LOCKS.
NO AIR TO LOCK RELEASE CYLINDER	ENSURE AIR PRESSURE TO LOCK RELEASE SYSTEM (40 PSI MINIMUM)
OBSTRUCTION UNDER VEHICLE OR LIFT	REMOVE OBSTRUCTION.
RAISING UNEVEN	
SHOP FLOOR UNEVEN	USE ON CLEAN, FLAT, LEVEL SURFACE.
VEHICLE NOT PROPERLY CENTERED.	MAKE NECESSARY ADJUSTMENTS TO CENTER VEHICLE. VEHICLE C.O.G. TO BE POSITIONED OVER MARKERS INDICATED ON SIDES OF PLATFORMS
SLOW DRIFT DOWN	
POSSIBLE CAUSE	SOLUTION
SAFETIES NOT ENGAGED	RAISE UNIT TO RE-ENGAGE SAFETIES. THEN LOWER UNIT ONTO SAFETIES.
POWER UNIT LOWERING VALVE CONTAMINATION	BACK FLUSH POWER UNIT : PULL DOWN ON THE LOWERING HANDLE, THEN ENGAGE THE UP BUTTON AT THE SAME TIME. RUN UNIT APPROX. 10 SEC.
EXTERNAL HYDRAULIC LEAKS (NOTE: TIGHTEN ALL FITTINGS PER SPECIFICATIONS.)	
POSSIBLE CAUSE	SOLUTION
CYLINDER SEAL	THOROUGHLY CLEAN THE CYLINDER. VERIFY LEAK ORIGIN. FITTINGS ARE TO BE TIGHTENED PER SPECIFICATIONS
BAD FLAIR OR FITTING	REMOVE THE HYDRAULIC TUBING AND INSPECT FLAIR AND FITTING FOR DEFORMATION. REPLACE IF NEEDED.
BAD O-RING (O-RING TYPE FITTINGS)	CHANGE O-RING
LOOSE PIPE FITTING	REMOVE, RESEAL, AND RE-INSTALL FITTING. SEAL ALL PIPE FITTING CONNECTIONS WITH THREAD SEALANT MOHAWK PART # 601-610-002 NOTE: DO NOT USE TEFLON TAPE.

MOHAWK

MODEL USL-6000

FIGURES/DIAGRAMS



MOHAWK RESOURCES LTD.

P.O. BOX 110

65 VROOMAN AVENUE

AMSTERDAM, NY 12010

TOLL FREE : 1-800-833-2006

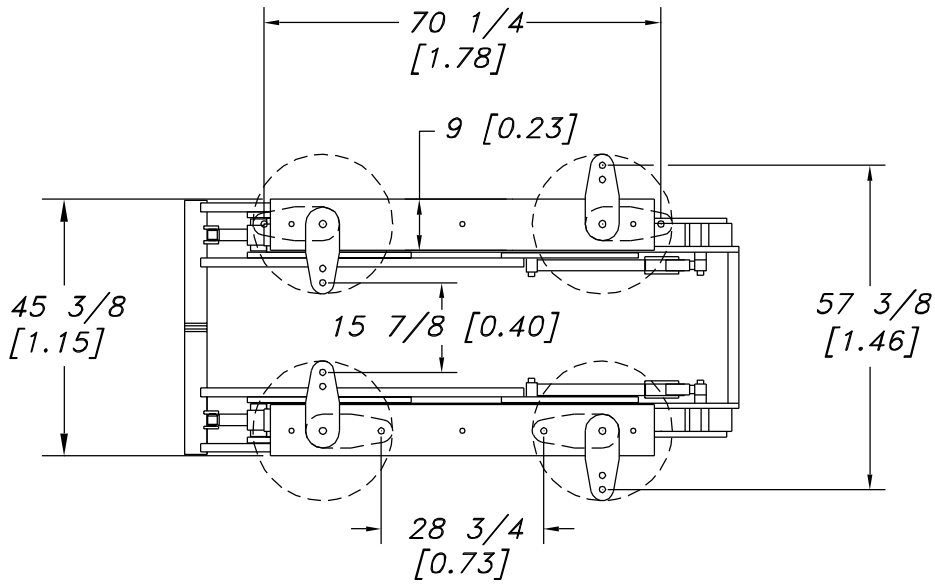
LOCAL : 1-518-842-1431

FAX : 1-518-842-1289

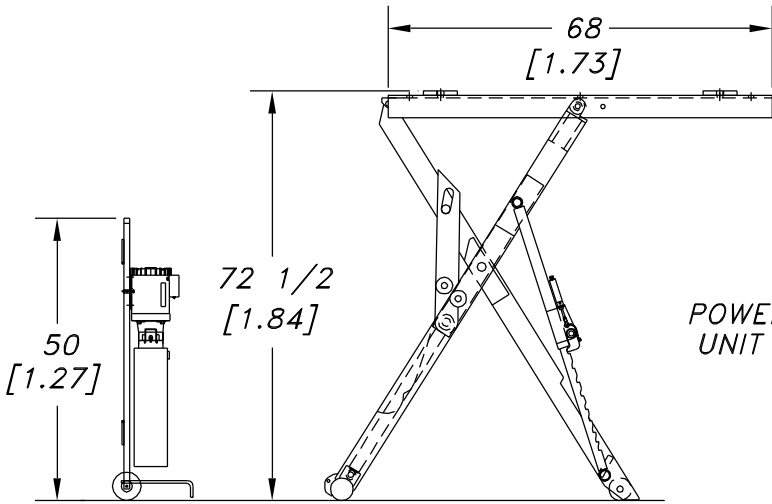
INTERNET: www.MOHAWKLIFTS.com

E-MAIN: Techsupport@MOHAWKLIFTS.com

TOP VIEW
LOWERED UNIT

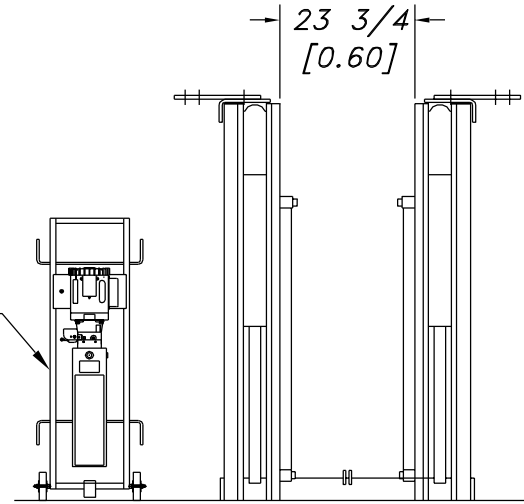


SIDE VIEW
RAISED UNIT

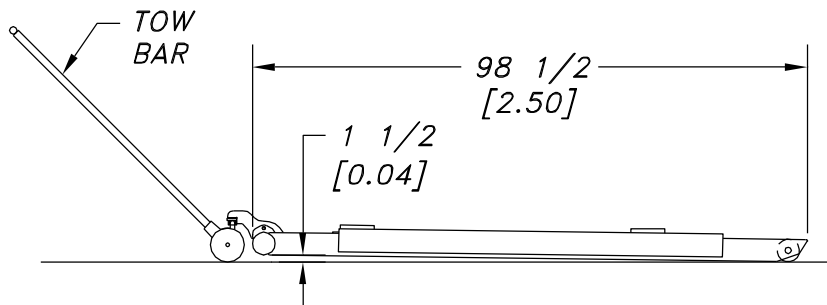


POWER
UNIT

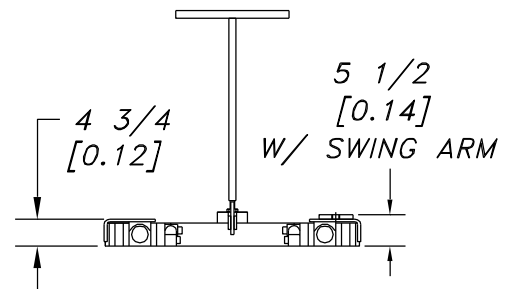
FRONT VIEW
RAISED UNIT



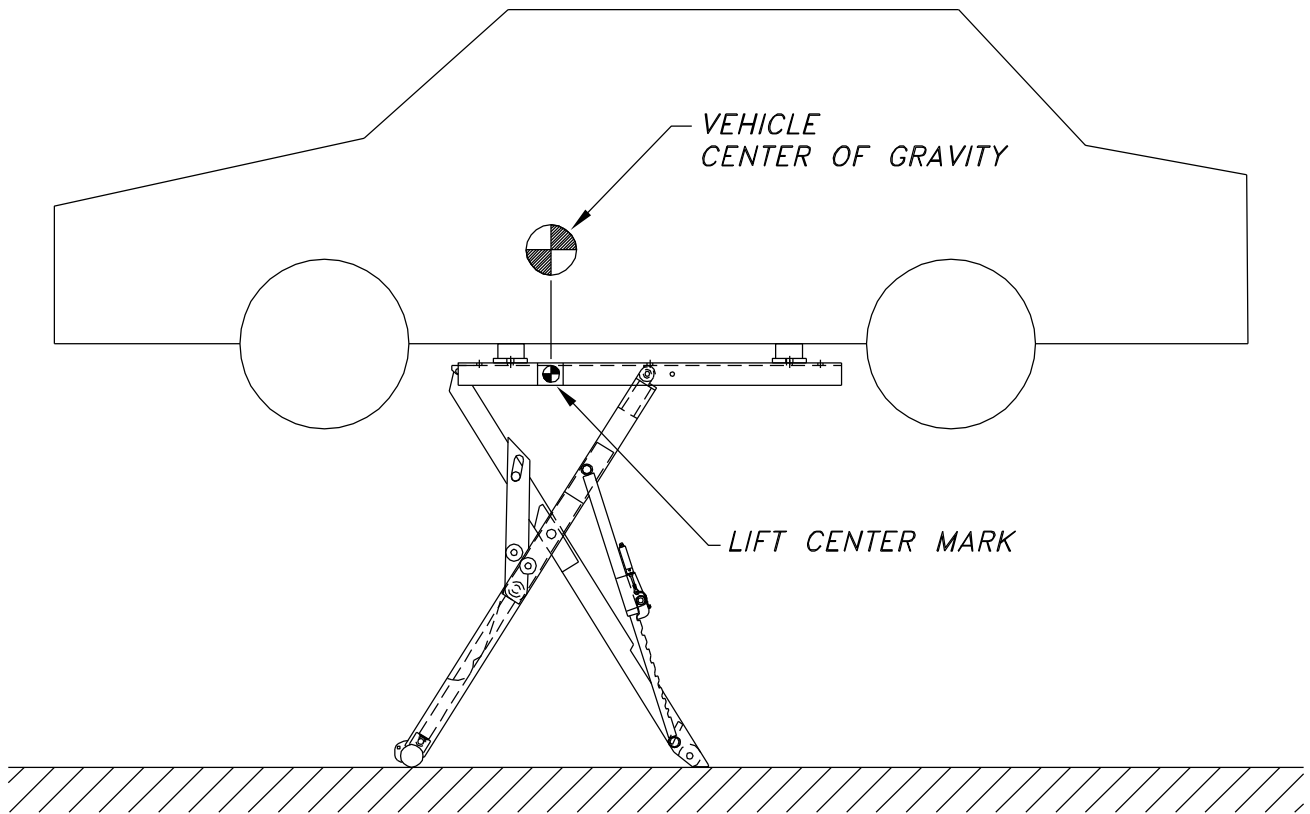
SIDE VIEW
LOWERED UNIT



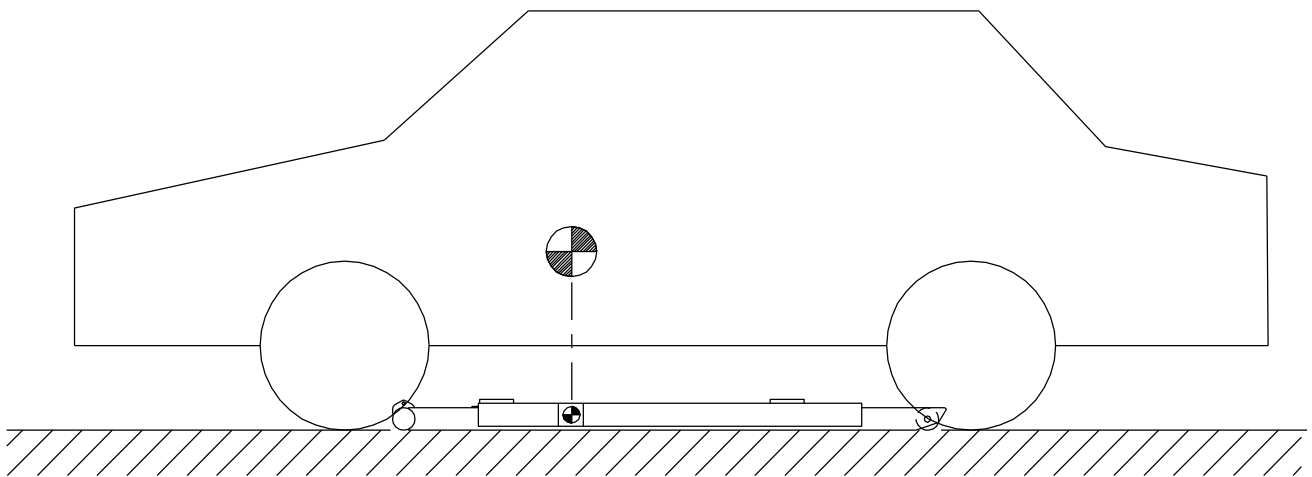
FRONT VIEW
LOWERED UNIT



SIDE VIEW
RAISED UNIT



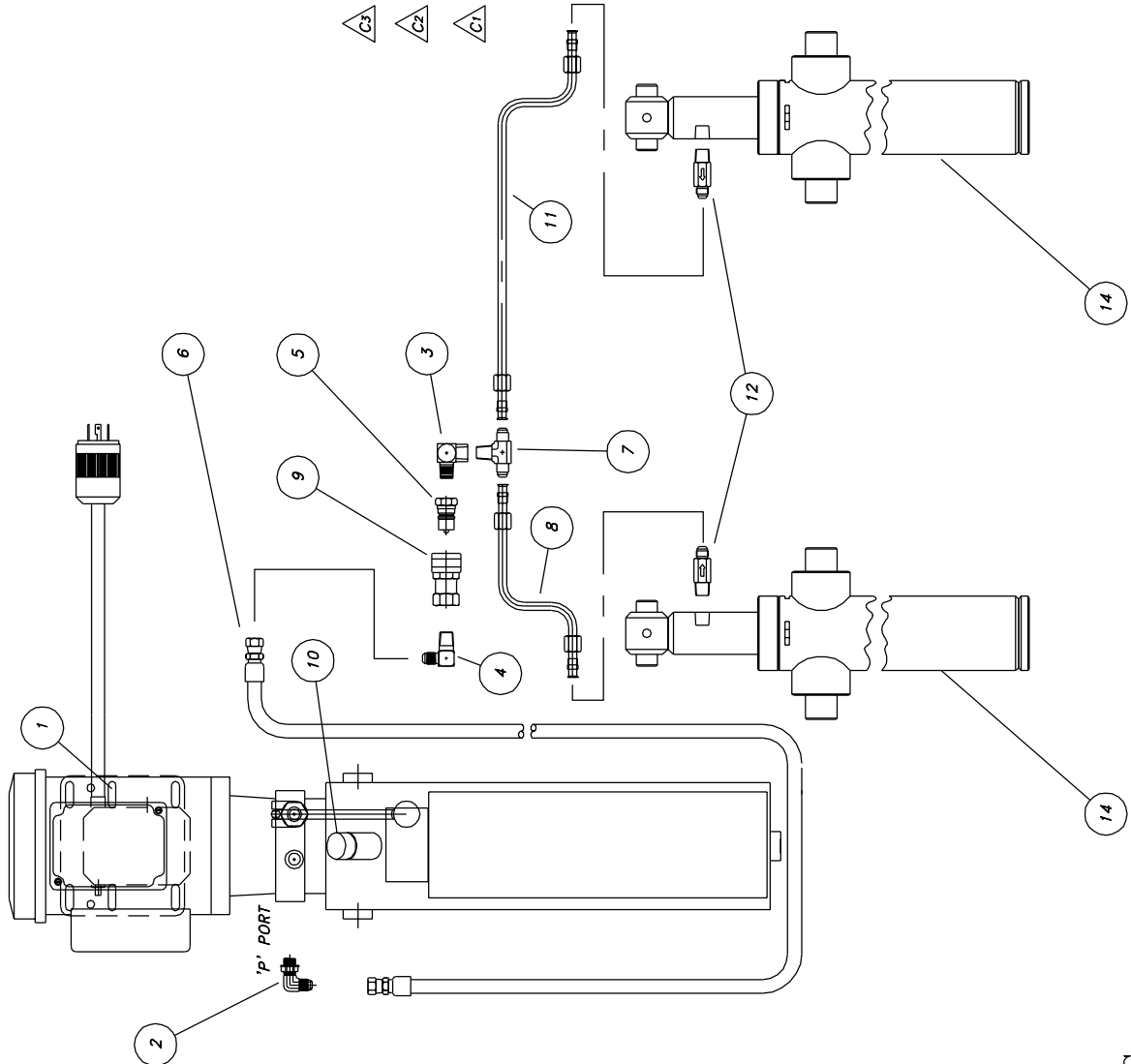
SIDE VIEW
LOWERED UNIT



NOTE: ALWAYS POSITION VEHICLE'S CENTER OF GRAVITY
DIRECTLY ABOVE LIFT CENTER MARK.

USL-6000 LIFT LAYOUT

REV.	DESCRIPTION	DATE	BY	APP'D.
C1	1) ITEM 13 WAS 601-450-001 2) ITEM 14 WAS 601-010-020 3) ITEM 15 WAS 601-420-107	5/01	dak	



ITEM	PART NUMBER	DESCRIPTION	QTY
15			
14	601-490-004	CYLINDER ASSEMBLY, USL-6000	2
13			
12	601-410-046	VELOCITY FUSE, 4 GPM VONBERG #28001-503-4	2
11	006-010-045	TUBING ASSEMBLY, 18"	1
10	601-310-005	BREATHER CAP MONARCH #01143	1
9	601-420-109	QUICK COUPLER, 3/8 FEM NPT, SLEEVE TYPE WWG #2F627	1
8	006-010-044	TUBING ASSEMBLY, 11 3/8"	1
7	601-420-012	TEE, #6 M JIC, 3/8 MAL NPT AERQUIP #2030-6-6S	1
6	006-010-046	HOSE ASSEMBLY, 18' LONG	1
5	601-420-110	QUICK COUPLER, 3/8 FEM NPT, NIPPLE TYPE WWG #2F621	1
4	601-420-007	ELBOW, 90°, 3/8 MAL NPT TO #6 JIC AERQUIP #2024-6-6S	1
3	601-420-010	ELBOW, 90°, 3/8 FEM NPT TO 3/8 MALE NPT AERQUIP #2089-6-6S	1
2	601-420-017	ELBOW, 90°, #6 ORB TO #6 JIC AERQUIP #2062-6-6S	1
1	601-300-048	POWER UNIT, 1 HP, 115/230 VAC, 1 PHASE MONARCH #M-4509-XXXX	1

C-SIZE

NOTICE OF CONFIDENTIAL INFORMATION
 INFORMATION CONTAINED HEREIN IS CONFIDENTIAL AND PROPERTY OF MOHAWK RESOURCES LTD. WHERE DRAWING IS FURNISHED TO OTHERS IT SHALL BE USED SOLELY FOR PURPOSES OF INSPECTION, INSTALLATION, REPAIR, OR MAINTENANCE OF THE EQUIPMENT TO WHICH IT RELATES. IT IS NOT TO BE REPRODUCED OR DISCLOSED BY THE RECIPIENT FOR ANY OTHER PURPOSES WHATSOEVER.

NOTES:
 1. REMOVE ALL SHARP CORNERS & EDGES.
 2. UNLESS OTHERWISE SPECIFIED, SURFACE FINISH TO BE 125 RMS.
 3. WELDING MEDIUM SHALL CONFORM TO AWS SPECIFICATIONS TO E-70XX ELECTRODES OR E-70T1 CODE 5.3 FLUX CORE WIRE ONLY.

TOLERANCES:
 ANGULAR: ± 1°
 FRACTIONAL: ± .030
 DECIMAL: ± .005
 D.XXX: 0.000

FILE NAME: R10081

006-010-000
 NEXT ASSEMBLY

SCALE	1/4"=1"	DRAWN	R.V.
CHECKED	dak	APPROVED	
DATE	10/97	WEIGHT	N/A
		LB.	

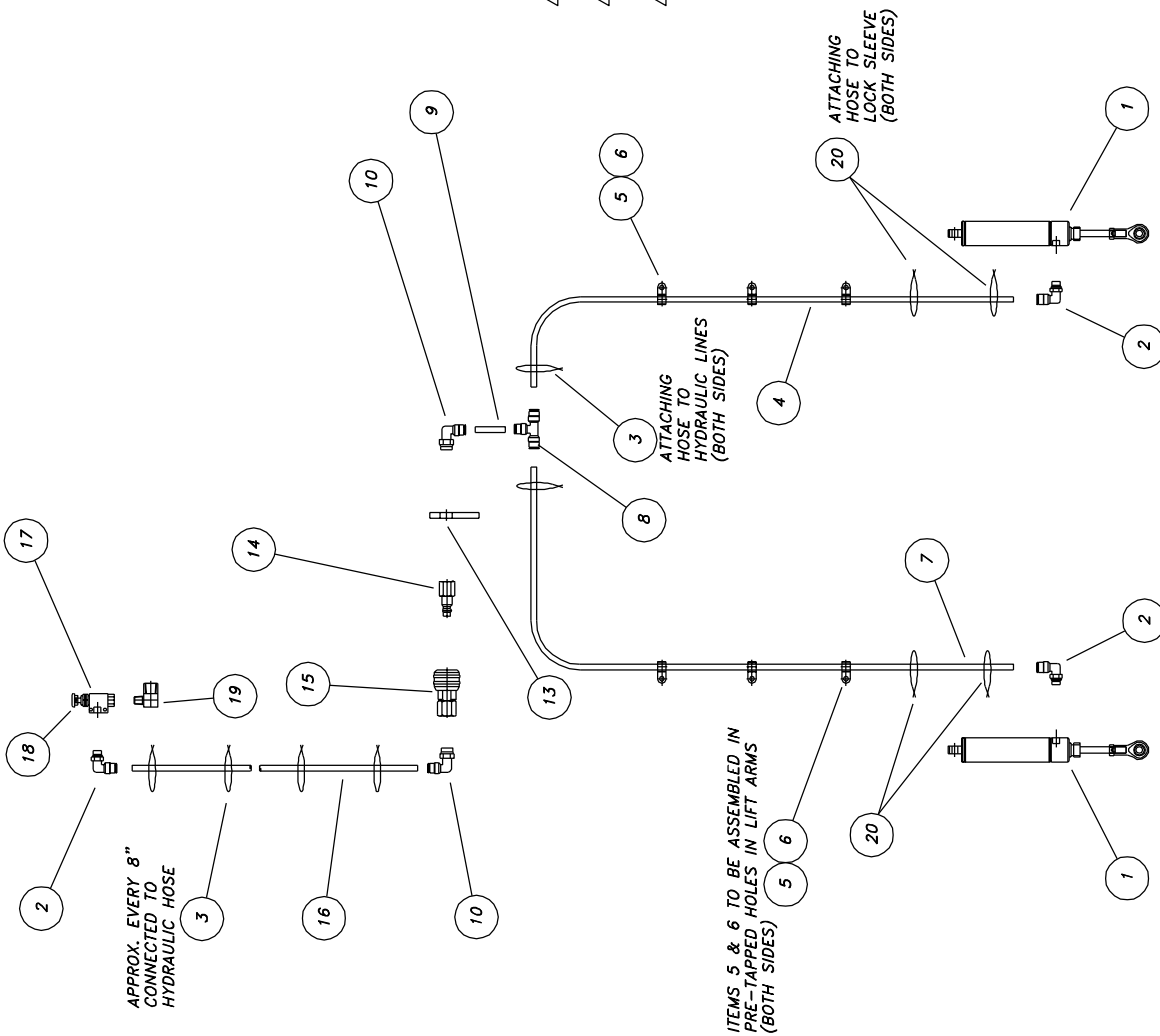
MOHAWK RESOURCES LTD.
HOSE & FITTING LIST, USL-6000

DRAWING NUMBER: 006-010-081

HYDRAULIC TUBING AND FITTING LIST

REV.	DESCRIPTION	DATE	BY	APP'D.
D	1) ITEM 11 WAS 600-710-008 2) ITEM 12 WAS 600-640-012 3) ITEM 13 WAS 007-007-140	9/99	dak	RV

ITEM	PART NUMBER	DESCRIPTION	QTY
20	601-600-021	WIRE TIE, PLASTIC, 15" LG	(4)
19	601-420-121	ELBOW, 90°, 1/8 MALE NPT TO 1/4 FEM NPT	(1)
18	601-510-005	POPPET VALVE PUSH BUTTON	(1)
17	601-510-004	POPPET VALVE, PNEUMATIC, 3 WAY	(1)
16	006-010-432	HOSE, PLASTIC, BLACK, 1/4 TUBE x 19'-6" (234")	(1)
15	601-530-034	QUICK COUPLER, 1/4 FEM NPT, SLEEVE TYPE	(1)
14	601-530-035	QUICK COUPLER, 1/4 FEM NPT, NIPPLE TYPE	(1)
13	006-010-196	AIR FITTING BRACKET, 1/4 x 1 1/2(FLAT) x 2 1/4	(1)
12			
11			
10	601-520-003	ELBOW, 90°, 1/4 NPT TO 1/4 TUBE	(2)
9	006-010-429	HOSE, PLASTIC, BLACK, 1/4 TUBE x 2"	(1)
8	601-520-004	TEE, UNION, 1/4 TUBE	(1)
7	006-010-431	HOSE, PLASTIC, BLACK, 1/4 TUBE x 92" LG	(1)
6	600-600-006	SCREW, #10-32 x 1/2, SLOTTED RD HD, MACHINE	(6)
5	600-850-005	CLIP, PLASTIC, BLACK, 3/8	(6)
4	006-010-430	HOSE, PLASTIC, BLACK, 1/4 TUBE x 77" LG	(1)
3	601-600-029	PLASTIC TIE, 8 1/2", BLACK	(30)
2	601-520-002	ELBOW, 90°, 1/8 NPT TO 1/4 TUBE	(3)
1	601-510-006	AIR CYLINDER, 1 1/16 STROKE	(2)



MOHAWK RESOURCES LTD.
PNEUMATIC TUBING & FITTING LIST
 TITLE FROM
 DRAWING NUMBER 006-010-086

SCALE 1/4
 CHECKED RV
 DATE 2/98

DRAWN dak
 APPROVED
 WEIGHT N/A
 LB.

ITEM 006-010-000
 NEXT ASSEMBLY

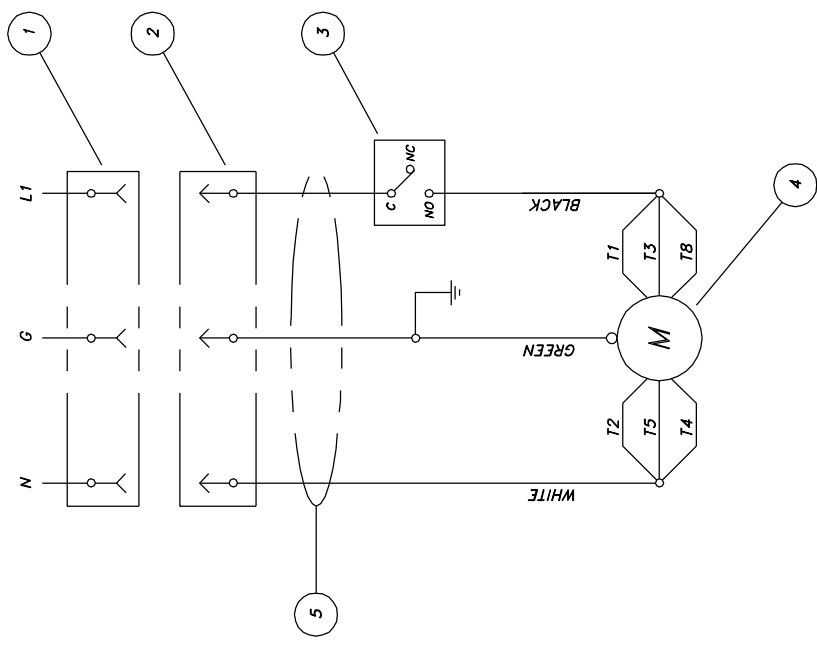
TOLERANCES:
 ANGULAR ± .030
 DIMENSIONAL ± .030
 DECIMAL 0.0005
 0.0005
 0.0005

FILE NAME R10086

NOTES:
 1. REMOVE ALL SHARP CORNERS & EDGES.
 2. FINISH TO BE 125 RMS.
 3. WELDING MEDIUM SHALL CONFORM TO AWS SPECIFICATIONS TO E-70XX ELECTRODES OR E-70T CODE 5.3 FLUX CORE WIRE ONLY.

NOTICE OF CONFIDENTIAL INFORMATION
 INFORMATION CONTAINED HEREIN IS CONFIDENTIAL AND PROPERTY OF MOHAWK RESOURCES LTD. WHERE SHOWN OR REFERENCED TO OTHERS IT SHALL BE USED SOLELY FOR PURPOSES OF INSPECTION, INSTALLATION, OR MAINTENANCE. THE INFORMATION SHALL NOT BE USED OR DISCLOSED BY THE RECIPIENT FOR ANY OTHER PURPOSES WHATSOEVER.

REV.	DESCRIPTION	DATE	BY	APP'D.
△				



1 HP, SINGLE PHASE
 115 VAC, 3450 RPM, 60 HZ
 RATING: 13.6 FULL LOAD AMPS @ 115 VAC

NOTES:

1. ALL ELECTRICAL EQUIPMENT AND WIRING SHALL CONFORM TO ANSI/NFPA 70-1990, NATIONAL ELECTRICAL CODE.
2. IT SHALL BE THE RESPONSIBILITY OF THE OWNER/EMPLOYER TO PROVIDE NECESSARY LOCKOUTS/TAGOUTS OF ENERGY SOURCES IN ACCORDANCE WITH ANSI Z244.1-1982, BEFORE ATTEMPTING REPAIRS.
3. ALL FIELD WIRING/ELECTRICAL RELATED LABOR SHALL BE PERFORMED BY CERTIFIED ELECTRICIANS.
4. UNIT MUST BE PROPERLY GROUNDED IN ACCORDANCE TO NEC ARTICLE 250 (GROUNDING), AND APPLICABLE LOCAL CODES.
5. THE FOLLOWING COLOR WIRES SHALL BE RESERVED:
 GREEN: ALL EQUIPMENT GROUND CONDUCTORS.
 WHITE: ALL NEUTRAL CONDUCTORS.

ITEM	PART NUMBER	DESCRIPTION	QTY
5	601-150-034	CONDUCTOR, #14/3, SOW-A/SO, 19" (+1"/-0")	REF 1
4	601-180-017	MOTOR, 1 HP, 115/230 VAC, 1 PHASE	REF 1
3	601-110-001	SWITCH, MICRO, 20 AMP RATED	REF 1
2	601-170-005	PLUG, 3 PRONG, 15A, 120V, SINGLE PHASE	REF 1
1	601-170-006	CONNECTOR, 3 PRONG, 15A, 120V, SINGLE PHASE	REF 1

C-SIZE

NOTICE OF CONFIDENTIAL INFORMATION

INFORMATION CONTAINED HEREIN IS CONFIDENTIAL AND PROPERTY OF MOHAWK RESOURCES LTD. IT SHALL BE USED SOLELY FOR PURPOSES OF INSPECTION, INSTALLATION OR MAINTENANCE. THE INFORMATION SHALL NOT BE USED OR DISCLOSED BY THE RECIPIENT FOR ANY OTHER PURPOSES WHATSOEVER.

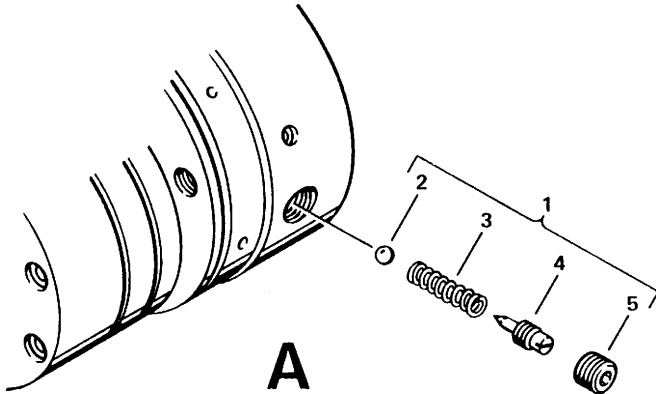
<p>NOTES:</p> <ol style="list-style-type: none"> 1. REMOVE ALL SHARP CORNERS & SURGES. UNLESS OTHERWISE SPECIFIED, SURFACE FINISH TO BE 125 RMS. 2. WELDING MEDIUM SHALL CONFORM TO AWS SPECIFICATIONS TO E-70XX ELECTRODES OR E-70TTI CODE 5.3 FLUX CORE WIRE ONLY. 	<p>TOLERANCES:</p> <p>ANGULAR ± 1°</p> <p>RECTANGULAR ± .030</p> <p>CIRCULAR ± .030</p> <p>OTHER ± .030</p>
<p>FILE NAME: R10090</p>	<p>006-010-000</p>
<p>NEXT ASSEMBLY</p>	<p>DATE: 10/97</p>

SCALE	N/A	DRAWN	R.V.	APPROVED	MOHAWK RESOURCES LTD.
CHECKED	RV	DATE	10/97	WEIGHT	N/A LB.
TITLE	ELECTRICAL SCHEMATIC, USL-6000				
FROM	N/A				
DRAWING NUMBER	006-010-090				

ELECTRICAL SCHEMATIC



RELIEF VALVE ADJUSTMENT PROCEDURE



RELIEF VALVE ADJUSTMENT PROCEDURE "A"
FOR UNITS MADE BEFORE APRIL 1, 1991.

1. REMOVE FLUSH PLUG.
2. TURN SCREW CLOCKWISE TO INCREASE PRESSURE.
3. TURN SCREW COUNTER-CLOCKWISE TO DECREASE PRESSURE.

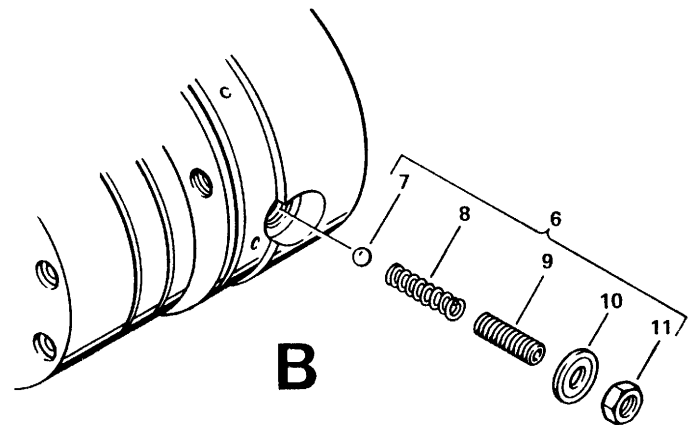
NOTE

OUTLET PORT FLOW MUST BE BLOCKED TO MAKE RELIEF VALVE OPERATE WHILE ADJUSTING.

4. REINSTALL FLUSH PLUG.

Ref. No.	Part No.	Description	No. Req.
1	02222	PARTS KIT, Relief Valve	1
2	00012	• BALL, 1/4" DIA., chrome, steel	1
3	02221	• SPRING, Relief Valve (Std.)	1
	00147	• SPRING, Relief Valve, 2,500 PSI & up (opt.)	1
4	07640	• SCREW, Adjusting Relief, 3/8-16	1
5	02350	• PLUG, Pipe, Flush 1/4 NPTF	1

Ref. No.	Part No.	Description	No. Req.
6	03766	PARTS KIT, Relief Valve	1
7	00012	• BALL, 1/4" DIA., chrome, steel	1
8	02221	• SPRING, Relief Valve (Std.)	1
	00147	• SPRING, Relief Valve, 2,500 PSI & up (opt.)	1
9	00387	• SCREW, Socket Set, 3/8-16, oval point	1
10	03874	• SEAL, Washer	1
11	07891	• NUT, Hex, jam, 3/8-16	1



RELIEF VALVE ADJUSTMENT PROCEDURE "B"
FOR UNITS MADE AFTER APRIL 1, 1991.

1. LOOSEN JAM NUT.
2. TURN SCREW CLOCKWISE TO INCREASE PRESSURE.
3. TURN SCREW COUNTER-CLOCKWISE TO DECREASE PRESSURE.

NOTE

OUTLET PORT FLOW MUST BE BLOCKED TO MAKE RELIEF VALVE OPERATE WHILE ADJUSTING.

4. TIGHTEN JAM NUT.

MOHAWK

MODEL USL-6000

PARTS



MOHAWK RESOURCES LTD.

P.O. BOX 110

65 VROOMAN AVENUE

AMSTERDAM, NY 12010

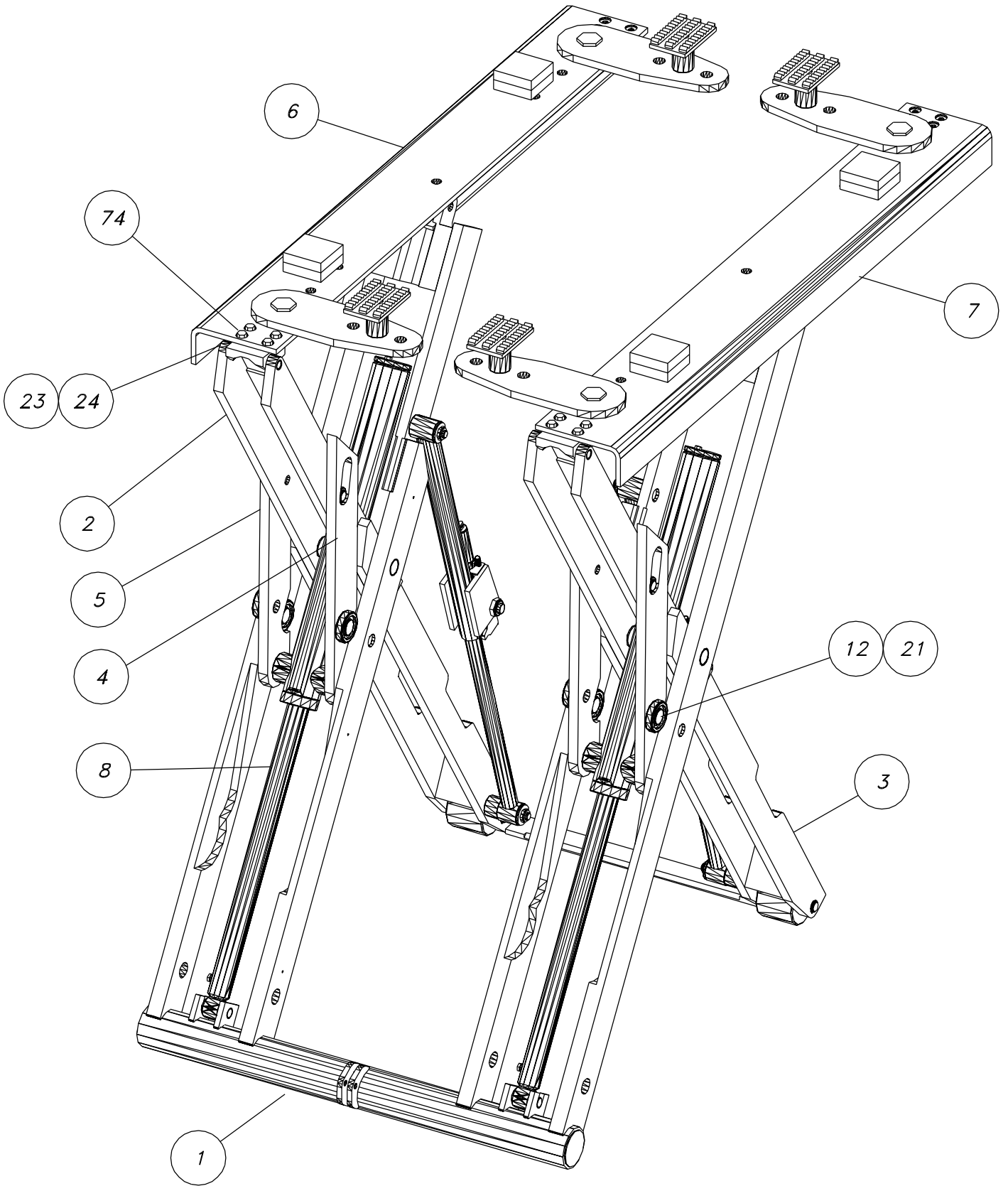
TOLL FREE : 1-800-833-2006

LOCAL : 1-518-842-1431

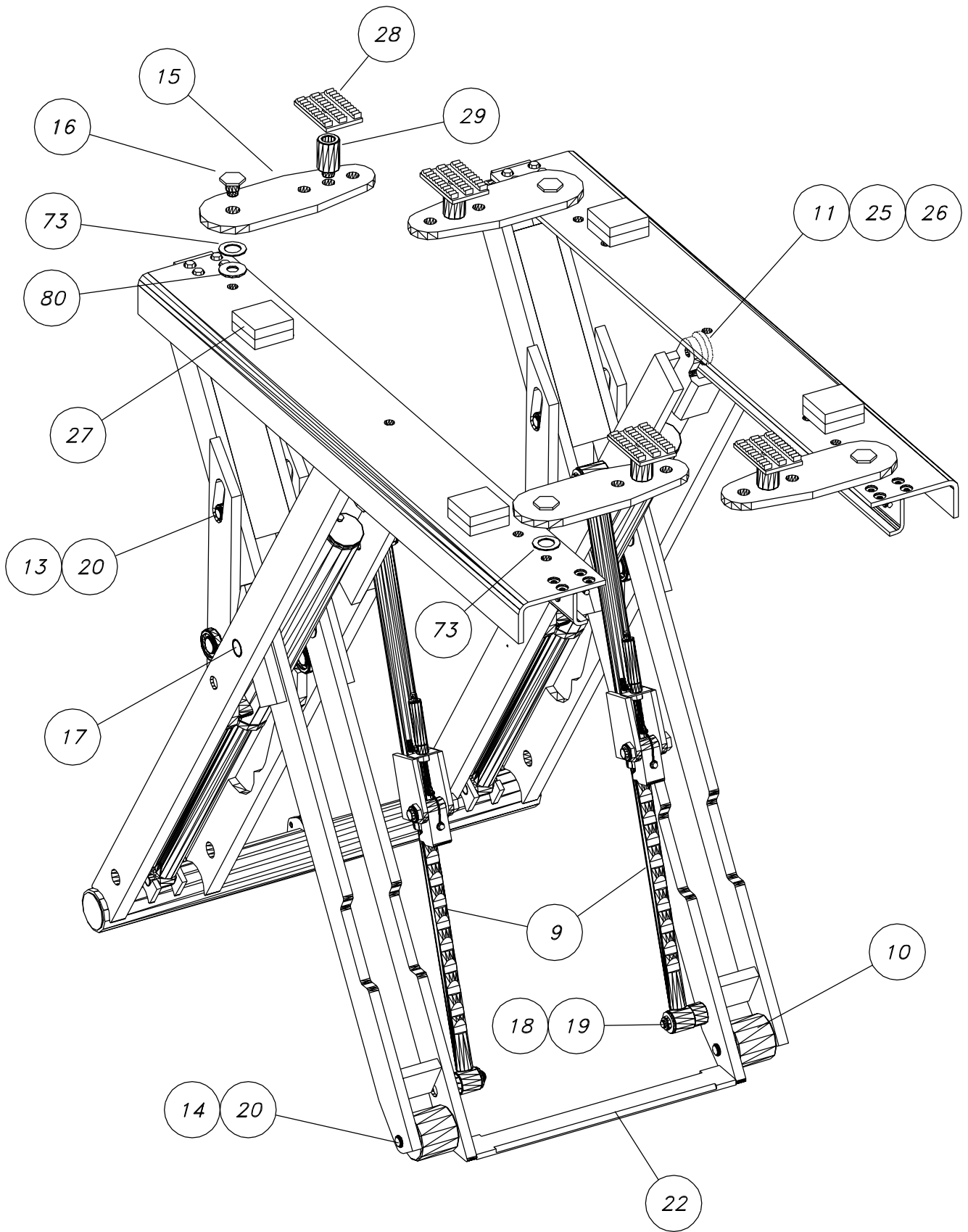
FAX : 1-518-842-1289

INTERNET: www.MOHAWKLIFTS.com

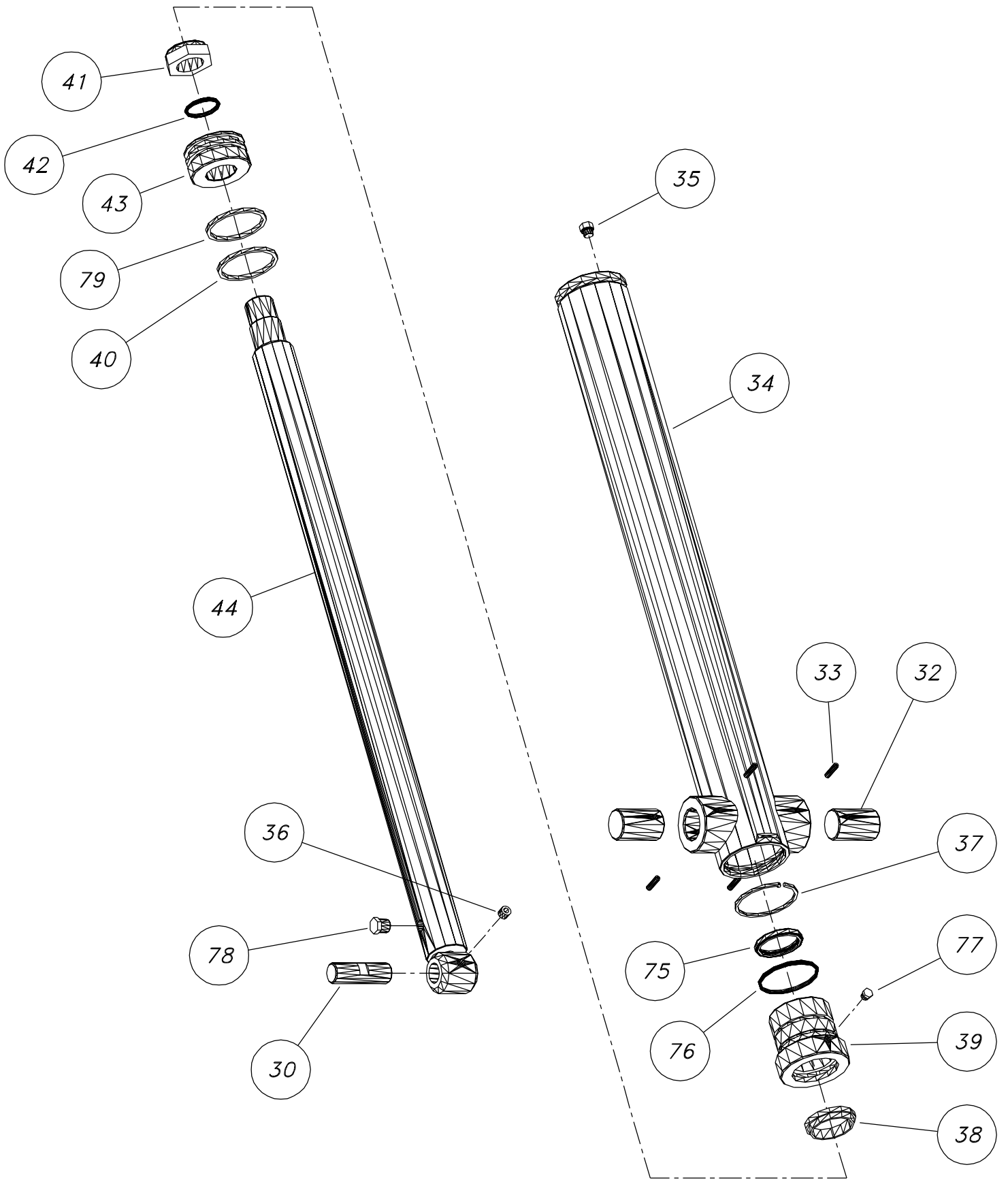
E-MAIN: Techsupport@MOHAWKLIFTS.com



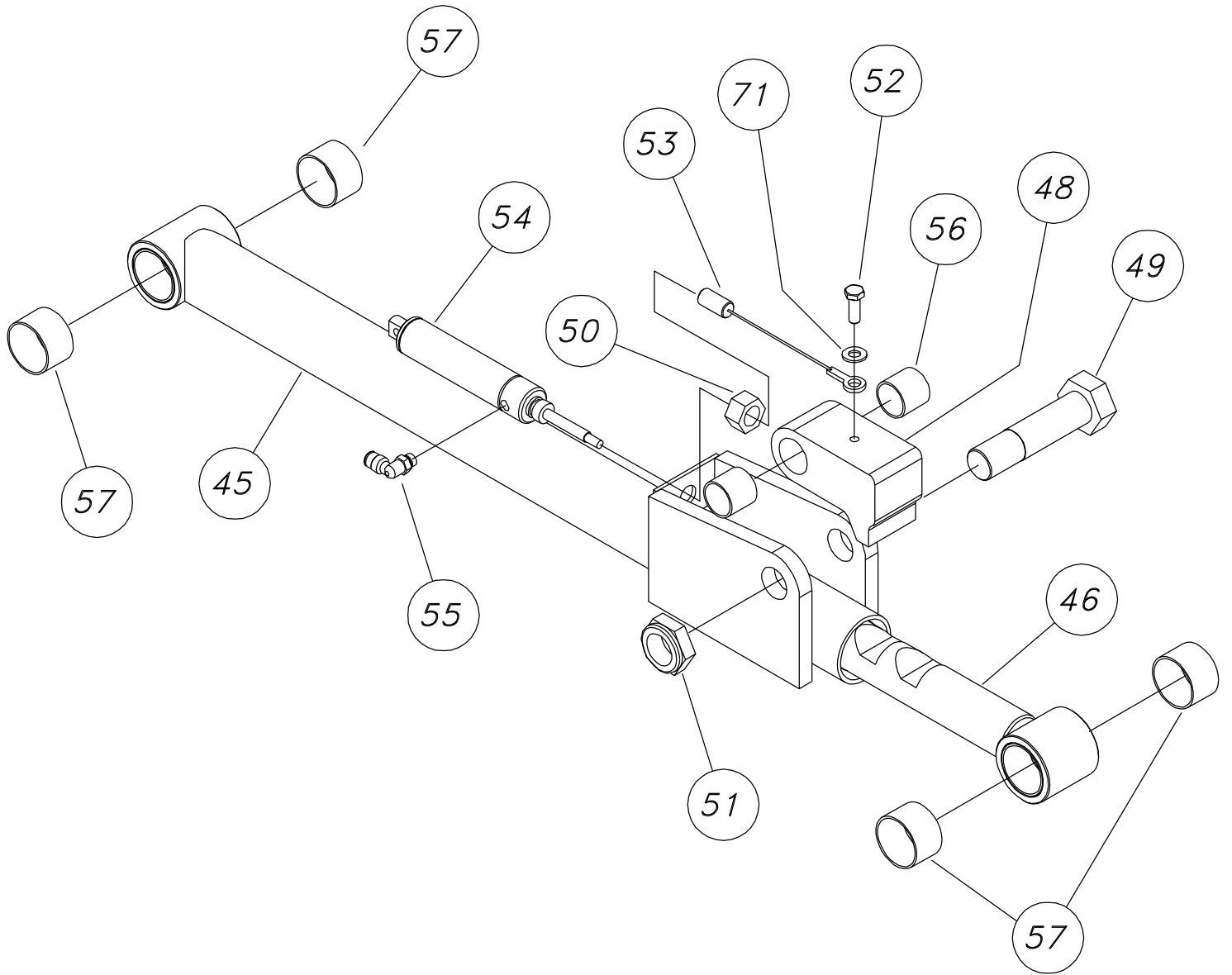
USL-6000 FRONT VIEW



USL-6000 REAR VIEW

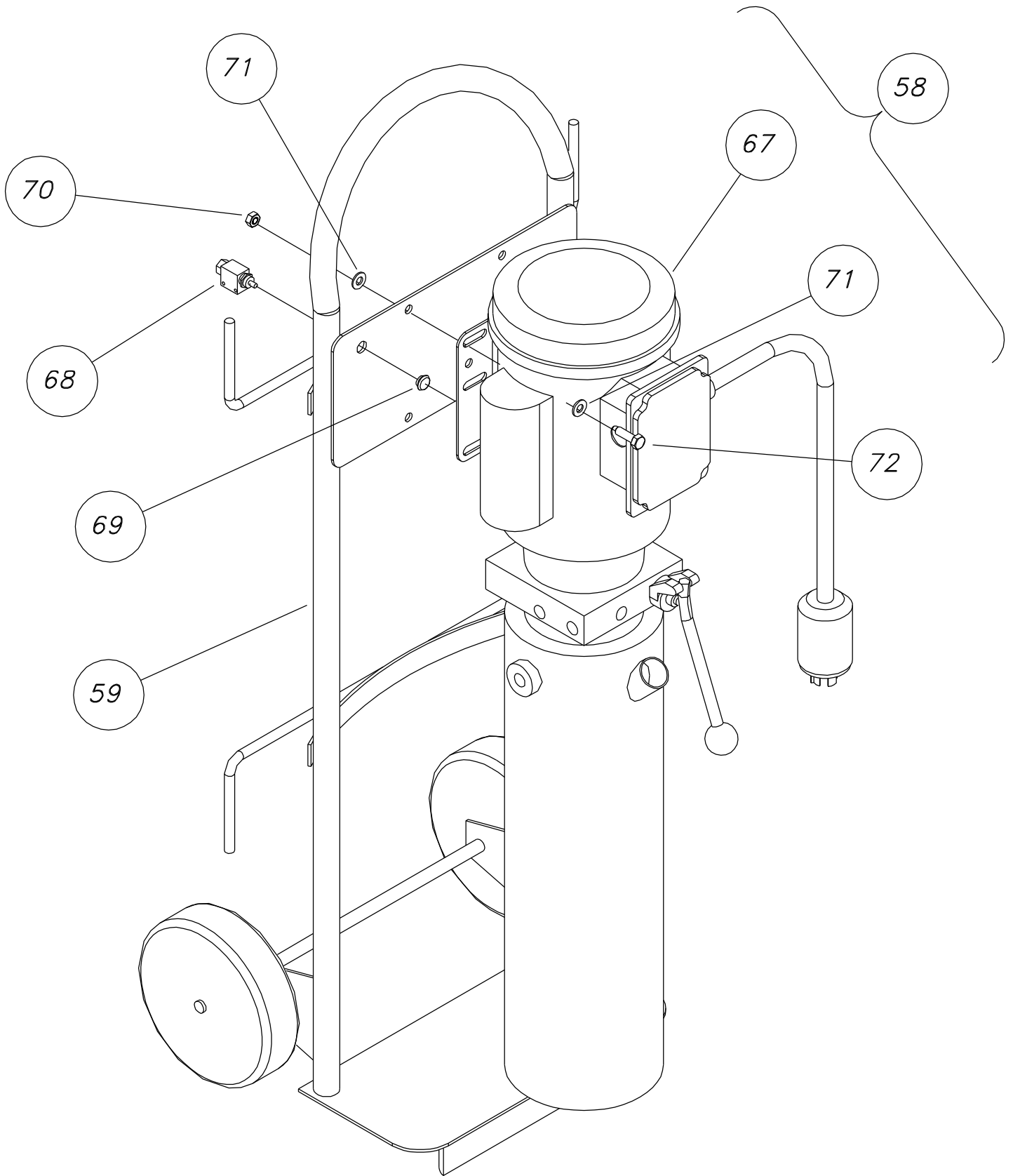


CYLINDER ASSEMBLY
3-3



LOCK ASSEMBLY (REV 10/00)

3-4



POWER UNIT DOLLY ASSEMBLY (REV 10/00)

USL-6000 PARTS LIST

FILE: USL-PL1.WB1

REV: 10/20/00

PURCH

ITEM	PART NO.	DESCRIPTION	QTY	ITEM #
1	006-010-010	MAIN SCISSOR WELDMENT	1	
2	006-010-011	INNER SCISSOR WELDMENT (PAD #1)	1	
3	006-010-012	INNER SCISSOR WELDMENT (PAD #2)	1	
4	006-010-015	BRACE WELDMENT (RIGHT)	2	
5	006-010-016	BRACE WELDMENT (LEFT)	2	
6	006-010-017	PAD #1 WELDMENT	1	
7	006-010-018	PAD #2 WELDMENT	1	
8	006-010-020	CYLINDER ASSEMBLY	2	
9	006-010-023	LOCK ASSEMBLY	2	
10	006-010-032	FLOOR ROLLER ASSEMBLY	2	
11	006-010-033	TRACK ROLLER ASSEMBLY	2	
12	006-010-034	3" ROLLER ASSEMBLY	10	
13	006-010-035	BRACE SLOT ROLLER ASSEMBLY	4	
14	006-010-123	FLOOR ROLLER AXLE, 1" DIA x 6 5/8 LG	2	756
15	006-010-155	PIVOT PAD, 3/4" THK x 6" x 15 3/8"	4	4
16	006-010-156	PIVOT PAD PIN, 2" HEX x 1 13/16" LG	4	1076
17	006-010-162	SCISSOR PIVOT PIN, 2" DIA x 3 7/8" LG	4	1080
18	600-690-002	NUT, LOCK, JAM, 3/4-16 NF	4	230
19	600-710-001	WASHER, FLAT, 3/4	4	164
20	600-870-002	SNAP RING, 1"	10	401
21	600-870-004	SNAP RING, 1 1/2"	10	486
22	600-010-127	FLAT BRACE, 1/2 x 3" x 27 1/4	1	
23	006-010-135	PAD PIVOT SADDLE, 1 5/8 x 4" x 3 15/16	2	977
24	006-010-136	PAD PIVOT SADDLE PIN, 7/8 DIA x 1 7/8 LG	4	978
25	006-010-181	NUT (MACHINED), 5/8-11 NC	2	
26	600-710-007	WASHER, FLAT, 5/8	2	163
27	601-620-031	RUBBER PAD, 1" x 4" x 4"	8	884
28	006-010-054	LIFTING PAD WELDMENT, USL-6000	4	
29	006-010-177	HEIGHT ADAPTER, 3", 2" DIA x 3 7/8 LG	4	1105
30	006-010-163	ROD END PIN, 1" DIA x 3 1/4" LG	2	1081
31	601-450-001	PLUG, PIPE, 3/8-18 NPT	2	104
32	006-010-121	TRUNION PIN, 1 1/2" DIA x 2 7/16" LG	4	754
33	600-910-003	ROLL PIN, 1/4" DIA x 1" LG	8	883
34	006-010-048	CYLINDER BARREL WELDMENT	2	
35	601-420-107	PLUG, #4 ORB	2	970
36	600-630-006	SCREW, SET, 1/2-13 NC x 1 1/2" LG	2	512
37	009-001-159	SPIN KEY, 1/8" SQUARE KEYSTOCK x 9" LG	2	8
38	601-020-008	ROD WIPER, 2" ID x 2 1/2" OD	2	894
39	006-010-120	ROD GLAND HOUSING, 3 1/2" OD x 1 3/4" ID x 3 3/8" LG	2	750
40	601-050-006	PISTON POLYPAK, 3" OD x 2 5/8" ID	2	898

USL-6000 PARTS LIST, CONT.

FILE: USL-PL1.WB1

REV: 10/20/00

PURCH

ITEM	PART NO.	DESCRIPTION	QTY	ITEM #
41	600-690-017	NUT, LOCK, JAM, 1 3/8-12 NF	2	527
42	601-030-029	O-RING, 1 3/4" OD x 1 1/2" ID x 1/8" DIA	2	897
43	006-010-118	PISTON, CYLINDER, 3 1/4" DIA x 1 5/8" LG	2	741
44	006-010-021	CYLINDER ROD WELDMENT	2	
45	006-010-024	LOCK SLEEVE WELDMENT	2	
46	006-010-025	LOCK RACK WELDMENT	2	
47	xxx	OBSOLETE	X	X
48	006-010-134	LOCK BODY, 1 7/8" THK x 2 1/2" x 3 7/8"	2	6
49	006-010-146	BOLT, 1"-14 NF x 4" LG, GRD 5 (MACHINED)	2	725
50	600-680-015	NUT, PLAIN, 5/8-18 NF, GRADE 5	2	905
51	600-690-016	NUT, LOCK, JAM, 1"-14 NF, GRADE 5	2	899
52	600-640-053	BOLT, HEX HEAD, 5/16-18 NF x 1/2" LG	2	921
53	600-850-014	LOCK RELEASE CABLE ASSEMBLY	2	
54	601-510-006	AIR CYLINDER, 1 1/16" BORE	2	788
55	601-520-002	FITTING, 90 DEG ELBOW, SWIVEL, 1/8 NPT TO 1/4 TUBE	2	834
56	600-860-020	BUSHING, 1" DIA x 1" LG	4	887
57	600-860-023	BUSHING, 1 1/2" DIA x 1" LG	8	
58	006-010-069	POWER UNIT DOLLY ASSEMBLY	1	
59	006-010-068	POWER UNIT DOLLY WELDMENT	1	
60	xxx	OBSOLETE	X	X
61	xxx	OBSOLETE	X	X
62	xxx	OBSOLETE	X	X
63	xxx	OBSOLETE	X	X
64	xxx	OBSOLETE	X	X
65	xxx	OBSOLETE	X	X
66	xxx	OBSOLETE	X	X
67	601-300-048	POWER UNIT, 1 HP, 1 PHASE, 115/230 VAC, 2.5 GAL RND TANK	1	
68	601-510-004	POPPET VALVE, PNEUMATIC, 3 WAY, CLIPPARD #MJV-3	1	821
69	601-510-005	POPPET VALVE PUSH BUTTON, CLIPPARD #11916-2	1	
70	600-690-001	NUT, LOCK, 5/16-18 NC	4	151
71	600-710-003	WASHER, FLAT, 5/16	10	161
72	600-640-001	BOLT, 5/16-18 NC x 1" LG, HEX HEAD CAP	4	135
73	006-010-184	MAIN PIVOT SHIM (PIVOT PAD WASHER)	4	
74	600-640-038	BOLT, 1/2-13 NC x 1" LG, HEX HEAD CAP, GRADE 8	8	
75	601-000-012	ROD T-SEAL, 2 3/8 OD x 2" ID	2	
76	601-030-001	O-RING, 3" OD x 2 3/4 ID x 1/8 DIA	2	
77	601-420-122	BREATHER FILTER PLUG, 1/8-27 NPT	2	
78	601-450-001	PLUG, 3/8-18 NPT	2	
79	601-010-009	PISTON T-SEAL W/ BACKUP, 3" OD x 2 5/8" ID	2	
80	600-710-010	WASHER, FLAT, 1"	2	

MOHAWK

MODEL USL-6000

TOW BAR KIT (OPTION)



MOHAWK RESOURCES LTD.

P.O. BOX 110

65 VROOMAN AVENUE

AMSTERDAM, NY 12010

TOLL FREE : 1-800-833-2006

LOCAL : 1-518-842-1431

FAX : 1-518-842-1289

INTERNET: www.MOHAWKLIFTS.com

E-MAIN: Techsupport@MOHAWKLIFTS.com

RELOCATION PROCEDURE (USING OPTIONAL TOW BAR KIT)

WARNING

- THE UNIT WILL BE RAISED OFF THE BAY FLOOR. EVERY EFFORT SHOULD BE MADE TO KEEP FEET AND ARMS FROM BENEATH THE UNIT AND AWAY FROM PINCH POINTS.

NOTE

- THE USL-6000 CANNOT BE RELOCATED/MOVED WITH A VEHICLE ON THE UNIT.
- IT IS ADVISED TO SWEEP THE FLOOR TO REMOVE ALL DEBRIS. DUE TO THE WEIGHT OF THE UNIT, SMALL STONES, NUTS, BOLTS, ETC., CAN MAKE MOVING THE UNIT TROUBLESOME IF NOT REMOVED.

- REMOVE THE VEHICLE FROM THE UNIT.
- PLACE LIFT ACCESSORIES INTO THEIR PROPER PLACE.
- RAISE UNIT APPROXIMATELY 2 FEET AND LOWER ONTO FIRST LOCK POSITION. CONTINUE TO PULL DOWN HANDLE FOR A FEW SECONDS AFTER THE LIFT HAS SETTLED INTO THE LOCK POSITION TO REMOVE PRESSURE FROM HYDRAULIC SYSTEM. ALTERNATIVELY, THE LIFT CAN BE MOVED WHEN FULLY LOWERED IF THE FLOOR IS LEVEL ENOUGH TO PROVIDE PROPER ROLLING OF LIFT.
- DISCONNECT HYDRAULIC AND PNEUMATIC COUPLINGS BETWEEN POWER UNIT AND LIFT. **SEE HYDRAULIC & PNEUMATIC TUBING AND FITTING LISTS (PG 2-3 & 2-4)**

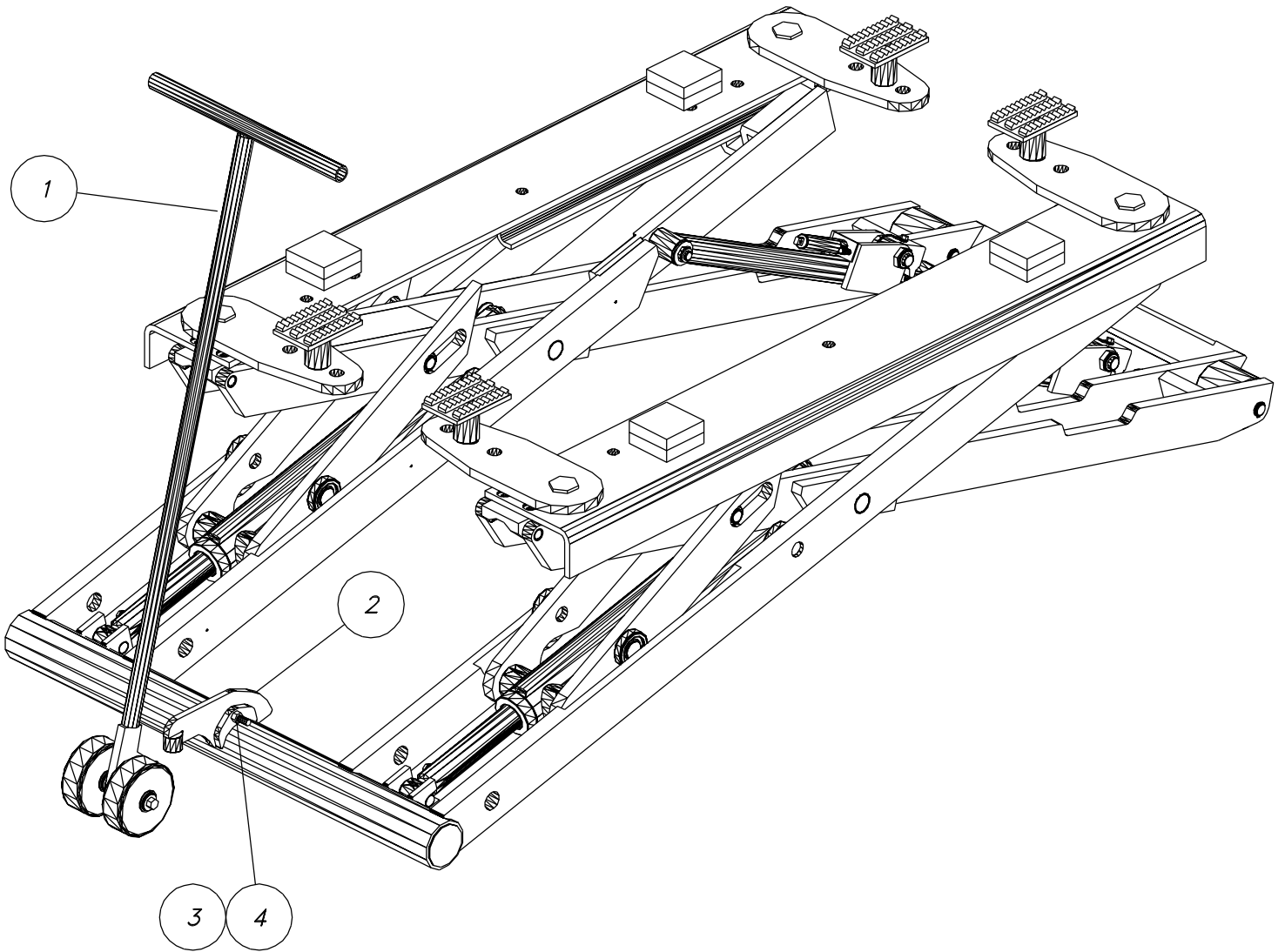
-- WARNING: --

DO NOT DISCONNECT HYDRAULIC COUPLINGS BETWEEN POWER UNIT AND LIFT UNTIL LIFT IS FULLY LOWERED ONTO A LOCK POSITION AND THERE IS NO HYDRAULIC PRESSURE IN THE SYSTEM. FAILURE TO DO SO CAN RESULT IN A PRESSURE RELEASE OF HYDRAULIC FLUID AND POSSIBLE INJURY.

- ASSEMBLE THE TOW BAR AND TOW BAR SUPPORT TO THE FRONT OF THE UNIT USING THE 1/2 IN BOLT AND NUT. **SEE TOW BAR SETUP POSITION (PG 4-2)**
- PULL DOWN ON TOW BAR TO A 30 DEGREE ANGLE TO LIFT FRONT OF UNIT. **SEE TOW BAR PULLING POSITION (PG 4-3)**
- PULL THE UNIT TO THE DESIRED LOCATION.
- REMOVE THE TOW BAR AND TOW BAR SUPPORT AND STORE IN AN APPROPRIATE LOCATION.

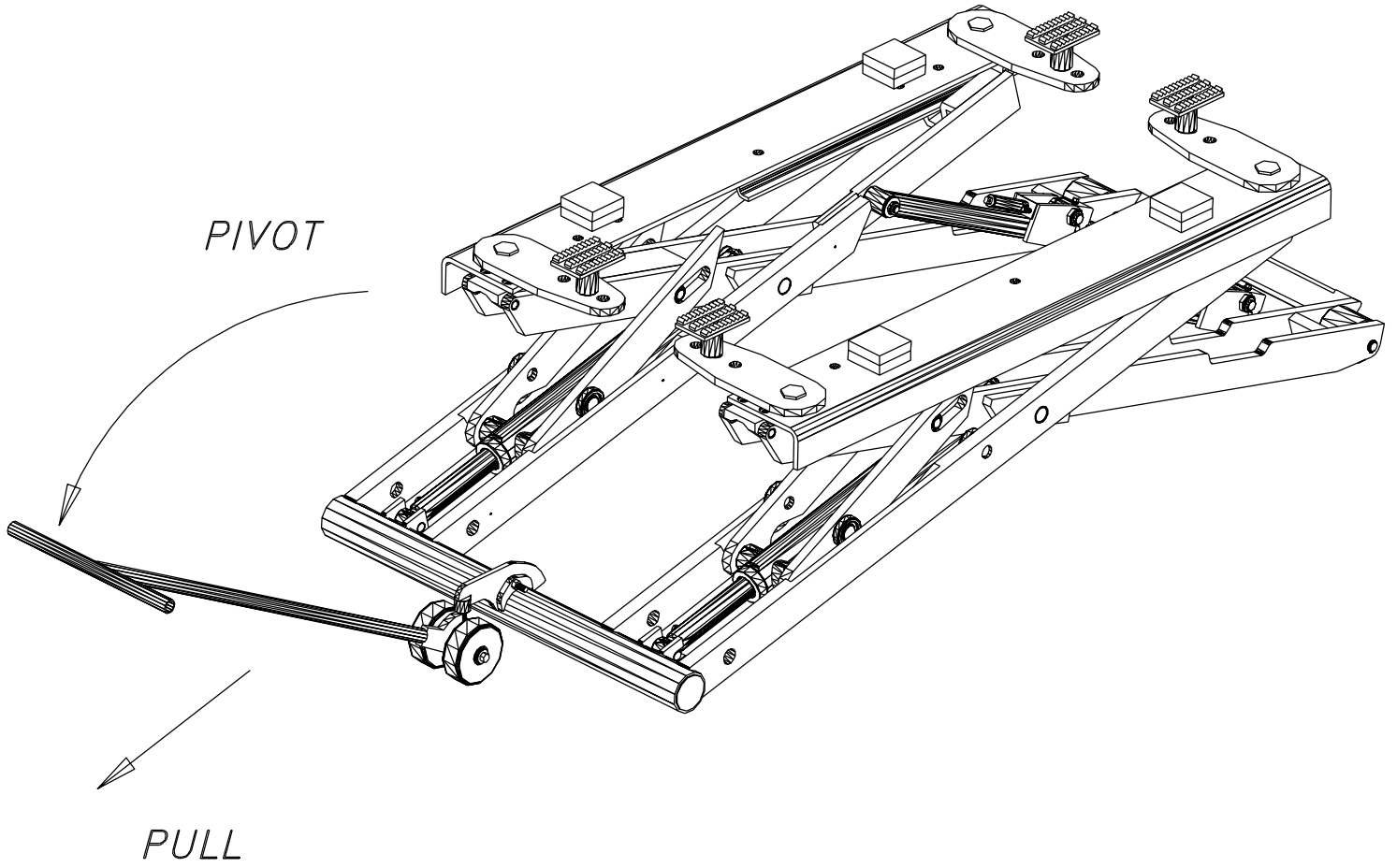
-- WARNING: --

ALWAYS REMOVE TOW BAR SUPPORT WELDMENT FROM LIFT BEFORE LIFTING VEHICLES. FAILURE TO DO SO CAN RESULT IN DAMAGE TO THE LIFT OR FLOOR, AND AN UNSTABLE AND POTENTIALLY DANGEROUS LIFTING CONDITION.

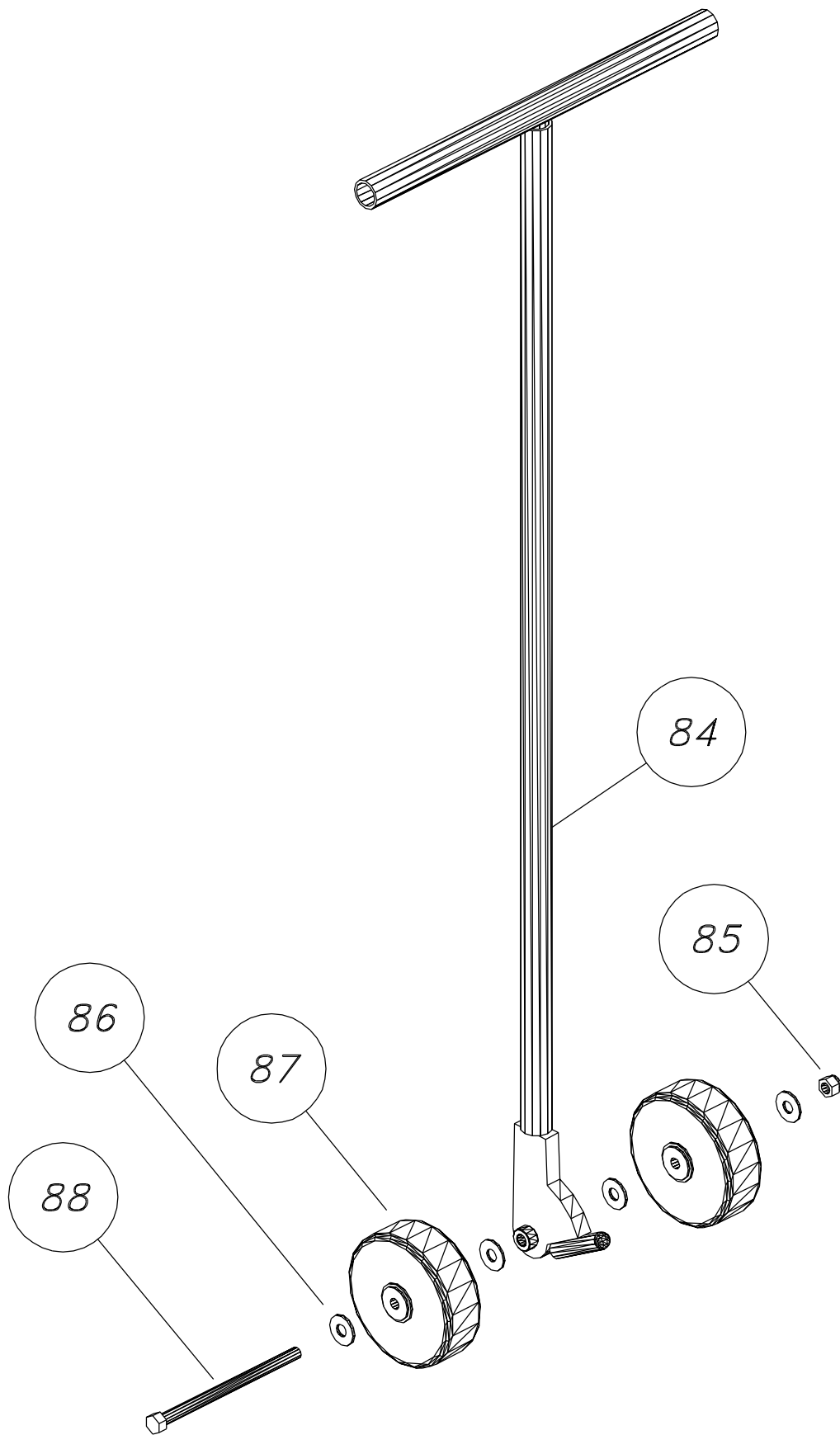


TOW BAR SETUP POSITION

4-2



TOW BAR PULLING POSITION



TOW BAR ASSEMBLY

TOW BAR KIT PARTS LIST

FILE: USL-PL2.WB1

REV: 4/24/98

PURCH

ITEM	PART NO.	DESCRIPTION	QTY	ITEM #
80	006-010-042	TOW BAR ASSEMBLY	1	
81	006-010-040	TOW BAR SUPPORT WELDMENT	1	
82	600-640-054	BOLT, 1/2-13 NC x 2 1/2 LG, HEX HEAD	1	
83	600-680-001	NUT, PLAIN, 1/2-13 NC	1	
84	006-010-041	TOW BAR WELDMENT	1	
85	600-690-009	NUT, LOCK, 1/2-13 NC, GRADE 5	1	153
86	600-710-008	WASHER, FLAT, 1/2	4	316
87	600-920-002	WHEEL, HEAVY DUTY, 6"	2	962
88	600-640-063	BOLT, 1/2-13 NC x 8" LG, HEX HEAD CAP	1	


⚠ CAUTION




Lift to be used by trained operator only.

©

Power Unit: Secure placard near lift controls.



Lift Control Console: Secure placard in an accessible location.



©

The messages and pictographs shown are generic in nature and are meant to generally represent hazards common to all automotive lifts regardless of specific style.

Funding for the development and validation of these labels was provided by the Automotive Lift Institute, PO Box 33116 Indialantic, FL 32903.

They are protected by copyright. Set of labels may be obtained from ALI or its member companies.

© 1992 by ALI, Inc. ALI/WL300caw

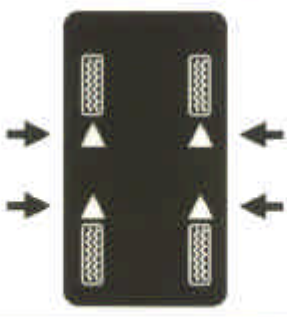
⚠ CAUTION



Authorized personnel only in lift area.

©

⚠ CAUTION



Use vehicle manufacturer's lift points.

©

⚠ CAUTION



Always use safety stands when removing or installing heavy components.

©

SAFETY INSTRUCTIONS



Read operating and safety manuals before using lift.

©

SAFETY INSTRUCTIONS



Proper maintenance and inspection is necessary for safe operation.

©

SAFETY INSTRUCTIONS



Do not operate a damaged lift.

©

SAFETY WARNING LABELS FOR HINGED FRAME ENGAGING LIFTS

Lift Owner/User Responsibilities:

- A. This Safety Warning placard **SHALL** be displayed in a conspicuous location in the lift area.
- B. Use one of the mounting arrangements illustrated on back of this placard.
- C. These Safety Warning labels supplement other documents supplied with the lift.
- D. Be certain all lift operators read and understand these labels, operating instructions and other safety related information supplied with the lift.

 <p>⚠ WARNING</p> <p>Position vehicle with center of gravity midway between adapters.</p> <p>©</p>	 <p>⚠ WARNING</p> <p>Remain clear of lift when raising or lowering vehicle.</p> <p>©</p>	 <p>⚠ WARNING</p> <p>Keep feet clear of lift while lowering.</p> <p>©</p>
 <p>⚠ WARNING</p> <p>Clear area if vehicle is in danger of falling.</p> <p>©</p>	 <p>⚠ WARNING</p> <p>Avoid excessive rocking of vehicle while on lift.</p> <p>©</p>	 <p>⚠ WARNING</p> <p>Keep clear of pinch points when lift is moving.</p> <p>©</p>

MOHAWK.

Because Quality Lasts Forever.



Model USL-6000

Full rise, space-saving, no-post, portable scissors lift, offers full under-car access.



Model A-7

The A-7 is a 7,000 lb. capacity asymmetric lift that allows full opening of all vehicle doors as well as total undercar/underdash access, thanks to Mohawk's unique "clear-floor" design. Low 4" arms accommodate all imports and low-riding sports cars. Includes both 3" and 6" truck adapters.

Model System I

The 9,000 lb. capacity System I, like all Mohawk lifts, features Mohawk's patented hydraulic equalization system with adjustable overhead (or optional underground) hydraulic lines. Offers low 3 1/2" swing arms and comes standard with truck adapters.



Model LMF-12, TP-15, TP-18, TP-26 & TP-30

These 12,000 to 30,000 lb. capacity models are the ideal heavy-duty lifts for up to Class VI trucks. Mohawk's unique "clear floor" design makes these the perfect lifts for all fleet applications. Truck adapters are standard equipment.



Model LMF-12



Model TR-50

TR-Series Ramp Style Lifts

Standard models from 25,000 up to 125,000 lbs. for total under-vehicle access.

Ramp lengths from 20' to 50'. Completely operated by a single technician, and features fully interlocked, redundant safety systems.

MOHAWK

Mohawk Industrial Park • P.O. Box 110
Amsterdam, NY 12010

1-800-833-2006 or 518-842-1431
FAX 518-842-1289



www.mohawklifts.com