

MOHAWK

MADE IN THE USA



MODEL USL-6000-K

6,000 LB. CAPACITY UNIVERSAL SCISSOR LIFT MANUAL

**THANK YOU
FOR SENDING IN YOUR
WARRANTY REGISTRATION
CARD**

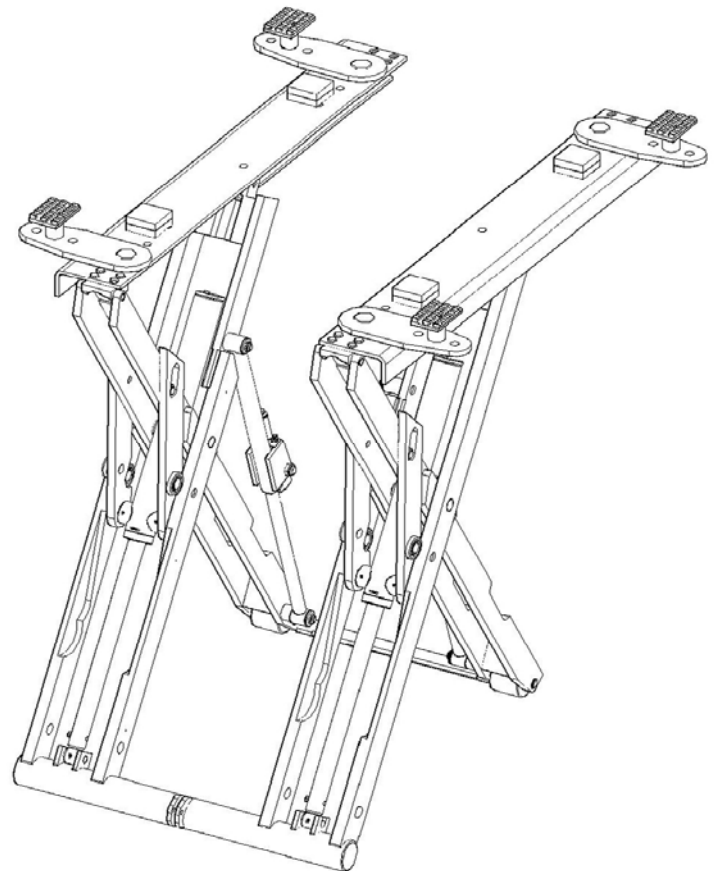
**MOHAWK SERVICE
DEPARTMENT**

- INSTALLATION
- OPERATION
- MAINTENANCE
- PARTS



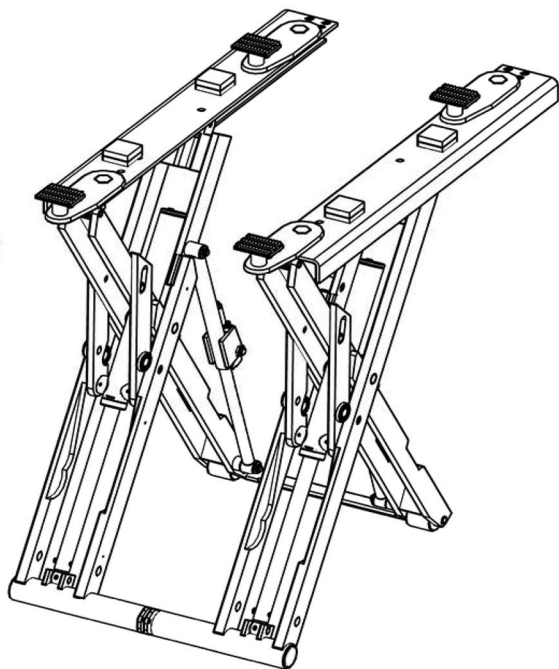
MOHAWK RESOURCES LTD.

P.O. BOX 110
65 VROOMAN AVENUE
AMSTERDAM, NY 12010
TOLL FREE : 1-800-833-2006
LOCAL : 1-518-842-1431
FAX : 1-518-842-1289
INTERNET: www.MOHAWKLIFTS.com
E-MAIL: service@MOHAWKLIFTS.com

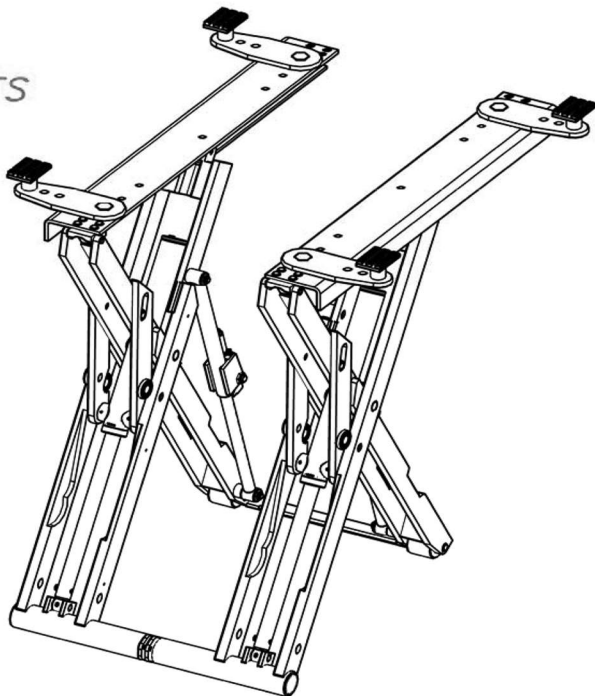


USL-6000-K LIFT CAPACITY:

CAPACITY IS
6,000 LBS
WHEN LOAD POINTS
OVER PLATFORM
(AS SHOWN TO
RIGHT)

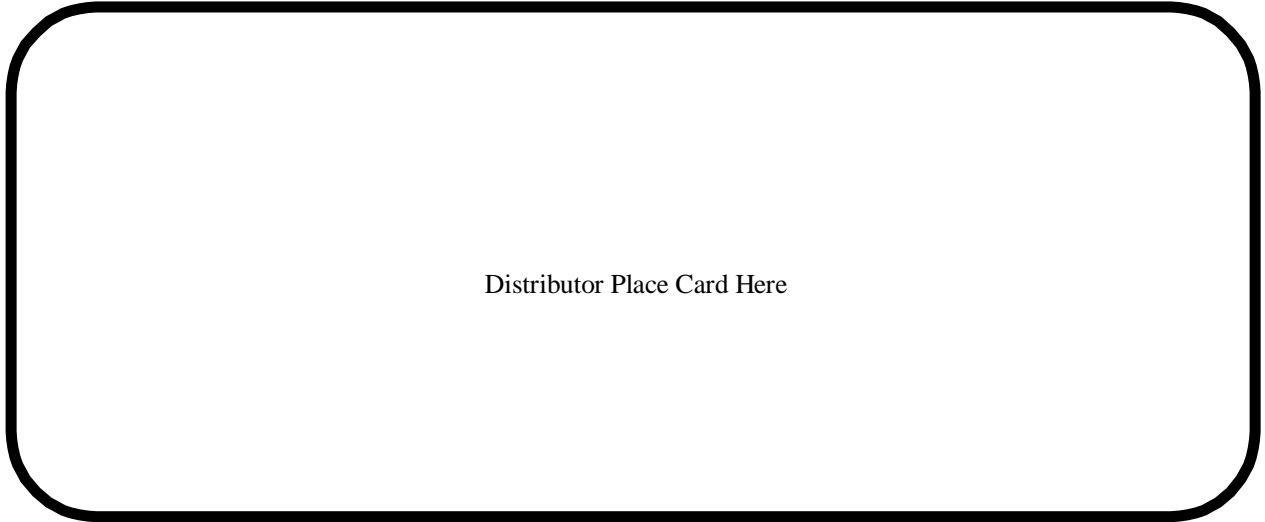


CAPACITY IS
4,000 LBS
WHEN LOAD POINTS
OUT-BOUND OF
PLATFORMS
(AS SHOWN TO
RIGHT)



HAVE A QUESTION?

**Call your local
Mohawk distributor
For parts, service and technical support.**



Please have this unit's model and serial number when calling for service.

Model Number _____

Serial Number _____

OR CONTACT:

MOHAWK RESOURCES LTD.

65 Vrooman Ave.

P.O. Box 110

Amsterdam, NY 12010

Toll Free: 1-800-833-2006

Local: 1-518-842-1431

Fax: 1-518-842-1289

Internet: www.MOHAWKLIFTS.com

E-Mail: Service@MOHAWKLIFTS.com

MOHAWK WARRANTIES

EFFECTIVE DATE: 8/1/2013*

GENERAL WARRANTY INFORMATION:

MOHAWK'S OBLIGATION UNDER THIS WARRANTY IS LIMITED TO REPAIRING OR REPLACING ANY PART OR PARTS RETURNED TO THIS FACTORY, TRANSPORTATION CHARGES PREPAID, WHICH PROVE UPON INSPECTION TO BE DEFECTIVE AND WHICH HAVE NOT BEEN MISUSED. DAMAGE OR FAILURE TO ANY PART DUE TO FREIGHT DAMAGE OR LACK OF REQUIRED REGULAR DOCUMENTED MAINTENANCE IS NOT COVERED UNDER THIS WARRANTY. ALL WARRANTY CLAIMS MUST BE PERFORMED IN ACCORDANCE TO MOHAWK'S WARRANTY PARTS RETURN POLICY (CONTACT MOHAWK'S SERVICE DEPARTMENT FOR MORE INFORMATION).

THIS WARRANTY DOES NOT COVER MIS-DIAGNOSING OF UNIT OR PARTS RETURNED THAT ARE NON-DEFECTIVE. THIS WARRANTY DOES NOT COVER ANY CONSEQUENTIAL OR INCIDENTAL DAMAGES INCLUDING, BUT NOT LIMITED TO, LOST REVENUES OR BUSINESS HARM. THIS EQUIPMENT HAS BEEN DESIGNED FOR USE IN NORMAL COMMERCIAL VEHICLE MAINTENANCE APPLICATIONS. A SPECIFIC INDIVIDUAL WARRANTY MUST BE ISSUED FOR UNITS THAT DEVIATE FROM INTENDED USAGE, SUCH AS HIGH CYCLE USAGE IN INDUSTRIAL APPLICATIONS, OR USAGE IN EXTREMELY ABUSIVE ENVIRONMENTS, ETC. MOHAWK RESERVES THE RIGHT TO DECLINE RESPONSIBILITY WHEN REPAIRS HAVE BEEN MADE OR ATTEMPTED BY OTHERS. THIS WARRANTY DOES NOT COVER LABOR. THIS WARRANTY DOES NOT COVER DOWNTIME EXPENSES INCURRED WHEN UNIT IS IN REPAIR. THE LIFT MUST BE REGISTERED WITHIN 30 DAYS OF INSTALLATION BY MAILING SUPPLIED WARRANTY REGISTRATION CARD TO MOHAWK AND MUST BE SIGNED BY A LICENSED ELECTRICIAN. THE MODEL NAME AND SERIAL NUMBER OF THE EQUIPMENT MUST BE FURNISHED WITH ALL WARRANTY CLAIMS. THIS WARRANTY STATEMENT CONTAINS THE ENTIRE AGREEMENT BETWEEN MOHAWK RESOURCES LTD. AND THE PURCHASER UNLESS OTHERWISE SPECIFICALLY EXPRESSED IN WRITING. THIS NON-TRANSFERABLE WARRANTY APPLIES TO THE ORIGINAL PURCHASER ONLY. THIS WARRANTY IS APPLICABLE TO UNITS LOCATED ONLY IN THE UNITED STATES OF AMERICA AND CANADA. CONTACT MOHAWK RESOURCES LTD. FOR SPECIFIC WARRANTY PROVISIONS FOR UNITS LOCATED OUTSIDE OF THESE COUNTRIES.

THIS WARRANTY DOES NOT COVER NORMAL SURFACE WEAR ITEMS, ITEMS SUBJECT TO ABRASION, OR ITEMS USED IN A CORROSIVE ENVIRONMENT. SOME ITEMS ON LIFT ARE SUBJECT TO NORMAL "WEAR AND TEAR" AND ARE NOT COVERED UNDER THIS WARRANTY.

STRUCTURAL COMPONENTS (ALL LIFTS):

STRUCTURAL AND MECHANICAL COMPONENTS OF THIS UNIT ARE GUARANTEED FOR THE BELOW STATED TIME FRAME, SPECIFIC TO MODEL LISTED, FROM THE DATE OF SHIPMENT FROM FACTORY, AGAINST DEFECTS IN WORKMANSHIP AND/OR MATERIALS WHEN LIFT IS INSTALLED AND USED ACCORDING TO SPECIFICATIONS.

25-YEARS STRUCTURAL / 10 YEARS MECHANICAL: MODELS A-7, SYSTEM IA-10, LC-12, LC-12-3SA, LMF-12, TP-16, TP-18, TP-20, TP-26, TP-30. STRUCTURAL ITEMS COVERED INCLUDE LEG, CARRIAGE, SWING ARM AND SLIDER WELDMENTS (EXCLUDING NORMAL WEAR AREAS AS STATED ABOVE). MECHANICAL ITEMS COVERED INCLUDE ROLLER BEARINGS AND LIFTING CHAIN.

5-YEAR: MODELS TL-7.

3-YEAR: MODELS TR-19, TR-25, FL-25, TR-30, TR-33, TR-35, TR-50, TR-75, TR-110, TR-120, MP-SERIES, RP-SERIES LIFTS.

2-YEAR: MODELS PARALLELOGRAM SERIES LIFTS.

1-YEAR: MODELS TD-1000, TD-2000, CT-1000, USL-6000.

POWER UNIT (ALL LIFTS):

ALL POWER UNIT COMPONENTS (MOTOR, PUMP AND RESERVOIR) ARE GUARANTEED FOR TWO YEARS FOR PARTS, FROM THE DATE OF SHIPMENT FROM FACTORY, AGAINST DEFECTS IN WORKMANSHIP AND/OR MATERIALS WHEN THE LIFT IS INSTALLED, CONNECTED BY A LICENSED ELECTRICIAN AND USED ACCORDING TO SPECIFICATIONS.

ELECTRICAL COMPONENTS (ALL LIFTS):

ALL ELECTRICAL COMPONENTS (EXCLUDING MOTOR) ARE GUARANTEED FOR ONE YEAR FOR PARTS, FROM THE DATE OF SHIPMENT FROM FACTORY, AGAINST DEFECTS IN WORKMANSHIP AND/OR MATERIALS WHEN THE LIFT IS INSTALLED AND USED ACCORDING TO SPECIFICATIONS.

PNEUMATIC-AIR COMPONENTS (ALL LIFTS):

ALL PNEUMATIC (AIR) COMPONENTS (I.E. AIR CYLINDERS AND POPPET AIR VALVES) ARE GUARANTEED FOR ONE YEAR FOR PARTS, FROM THE DATE OF SHIPMENT FROM FACTORY, AGAINST DEFECTS IN WORKMANSHIP AND/OR MATERIALS WHEN THE LIFT IS INSTALLED AND USED ACCORDING TO SPECIFICATIONS.

HYDRAULIC CYLINDERS (MODEL SPECIFIC LIFTS):

THE FOLLOWING MODELS ARE GUARANTEED FOR 5 YEARS (PARTS ONLY), FROM DATE OF SHIPMENT FROM FACTORY, FOR HYDRAULIC CYLINDERS, AGAINST DEFECTS IN WORKMANSHIP AND/OR MATERIALS WHEN THE LIFT IS INSTALLED AND USED ACCORDING TO SPECIFICATIONS: A-7, SYSTEM IA-10, LC-12, LC-12-3SA, LMF-12, TP-16, TP-18, TP-20, TP-26, TP-30.

ALL OTHER MODELS ARE GUARANTEED FOR TWO YEARS (PARTS ONLY), FROM THE DATE OF SHIPMENT FROM FACTORY, FOR HYDRAULIC CYLINDERS, AGAINST DEFECTS IN WORKMANSHIP AND/OR MATERIALS WHEN THE LIFT IS INSTALLED AND USED ACCORDING TO SPECIFICATIONS (EXCLUDING USL-6000, WHICH IS ONE YEAR).

AFTER THE FIRST 5 YEARS FROM DATE OF SHIPMENT FROM FACTORY, THE "EXTENDED LIFETIME CYLINDER SEAL WARRANTY" (BELOW) IS APPLICABLE TO THE FOLLOWING MOHAWK LIFTS ONLY: A-7, SYSTEM IA-10, LC-12, LC-12-3SA, LMF-12, TP-16, TP-18, TP-20, TP-26, TP-30. SEE MOHAWK'S "EXTENDED LIFETIME CYLINDER SEAL WARRANTY" FOR SPECIFIC WARRANTY PROVISIONS FOR HYDRAULIC CYLINDERS.

THE "EXTENDED LIFETIME CYLINDER SEAL WARRANTY" IS AS FOLLOWS:

AS THE ORIGINAL PURCHASER OF A MOHAWK LIFT MANUFACTURED BY MOHAWK RESOURCES, LTD. YOU ARE ENTITLED TO AN EXTENDED CYLINDER SEAL WARRANTY. TO QUALIFY FOR THIS WARRANTY, THE FOLLOWING CONDITIONS MUST BE MET:

ALL LIFTS MUST BE REGISTERED WITH MOHAWK RESOURCES, LTD., P.O. BOX 110, 65 VROOMAN AVENUE, AMSTERDAM, NY 12010, WITH THE ORIGINAL CUSTOMER NAME, ADDRESS AND PHONE NUMBER, WITHIN 30 DAYS OF INSTALLATION. (USE POSTAGE PAID WARRANTY REGISTRATION CARD ATTACHED TO THE FRONT OF THE MANUAL PROVIDED.)

MOHAWK'S OBLIGATION UNDER THIS WARRANTY IS LIMITED TO SUPPLYING MODEL SPECIFIC CYLINDER SEALS. THE CUSTOMER IS RESPONSIBLE FOR SHIPPING AND HANDLING OF THE SEALS. MOHAWK IS NOT RESPONSIBLE/LIABLE FOR THE REBUILD OF CYLINDERS BY OTHERS. THIS WARRANTY IS NON-TRANSFERABLE AND RUNS TO THE ORIGINAL PURCHASER ONLY.

STANDARD OPTIONS (ALL LIFTS):

ALL STANDARD OPTIONS OF THIS UNIT ARE GUARANTEED FOR ONE YEAR FOR PARTS, FROM THE DATE OF SHIPMENT FROM FACTORY, AGAINST DEFECTS IN WORKMANSHIP AND/OR MATERIALS WHEN LIFT IS INSTALLED AND USED ACCORDING TO SPECIFICATIONS.

CUSTOM LIFTS AND OPTIONS:

ALL "CUSTOM" LIFTS AND/OR "CUSTOM" OPTIONS ARE GUARANTEED ON A CASE-BY-CASE BASIS. CONSULT MOHAWK FACTORY FOR DETAILS ON SPECIFIC CUSTOM LIFTS AND/OR OPTIONS.

WARRANTY EXCEPTIONS (ALL LIFTS):

ADJUSTMENTS: THIS WARRANTY DOES NOT COVER CASUAL AND ROUTINE ADJUSTMENTS SUCH AS, BUT NOT LIMITED TO: FITTINGS, ANCHOR BOLT RE-TIGHTENING, OR ANY SHIMMING OR ADJUSTMENTS REQUIRED DURING A PROPER AND PROFESSIONAL INSTALLATION BY A QUALIFIED INSTALLER.

MAINTENANCE AND INSPECTIONS: IF THIS UNIT IS NOT MAINTAINED AND INSPECTED IN ACCORDANCE TO THE RELEVANT SECTIONS IN THE USERS MANUAL FOR THIS SPECIFIC MODEL, WARRANTY IS VOID. OSHA, ANSI AND MOHAWK REQUIRE THAT RECORDS MUST BE MAINTAINED TO PROVE THAT INSPECTIONS AND MAINTENANCE OF THIS UNIT HAVE BEEN ROUTINELY PERFORMED BY QUALIFIED INDIVIDUALS.

ABUSE: IF THIS UNIT IS FOUND TO BE OVERLOADED (PURPOSELY OR UNKNOWINGLY), USED IN A SITUATION BEYOND ITS INTENDED FUNCTION, NOT MAINTAINED OR INSPECTED REGULARLY, OR USED IN AN ABUSIVE ENVIRONMENT OR BEYOND NORMAL SHOP USAGE, ETC., THIS WARRANTY IS VOID IN ITS ENTIRETY.

NON-EXISTENT PROBLEMS: FOR SERVICE VISITS, PART REPLACEMENTS, LABOR, ETC. FOR PARTS FOUND TO BE NON-DEFECTIVE, OR FOR A UNIT DIS-FUNCTION THAT DOES NOT EXIST, IT IS THE LIFT OWNER THAT REQUESTED THE SERVICE VISIT WHO BEARS THE RESPONSIBILITY OF ALL RELATED EXPENSES.

BATTERIES: ALL BATTERIES CARRY THE BATTERY MANUFACTURER'S WARRANTY. MAINTENANCE REQUIREMENTS AND ABUSE PROVISIONS ARE AS STATED BY THE BATTERY MANUFACTURER. REFER TO BATTERY MANUFACTURER'S WARRANTY.

SPECIAL/MODIFIED INSTALLATIONS: THIS WARRANTY DOES NOT COVER "NON-TRADITIONAL" INSTALLATIONS. INSTALLATIONS ARE TO BE DONE ACCORDING TO SPECIFICATIONS, OR THE WARRANTY IS VOID.

WEARABLE COMPONENTS: SOME ITEMS ON LIFTS (IE. SLIDE BLOCKS) ARE SUBJECT TO NORMAL "WEAR AND TEAR" AND ARE NOT COVERED UNDER THIS WARRANTY.

*** THIS WARRANTY SUPERSEDES ALL OTHER WARRANTY POLICIES PREVIOUSLY STATED AND IN ALL OTHER MOHAWK PRODUCT SPECIFIC LITERATURE (MANUALS, BROCHURES, ETC.).**

CONTENTS

TOPIC	PAGE / FIGURE
<u>1-TEXT</u>	
APPENDAGES	1-1
SPECIFICATIONS	1-2
SETUP	1-3
PACKING LIST	1-4
SAFETY TIPS	1-5
PRE-OPERATION CHECK LIST / LIFTING PROCEDURES	1-6
MAINTENANCE PROCEDURES	1-7
TROUBLE SHOOTING	1-8
SERVICE CHART	1-9
MAINTENANCE CHART	1-10
<u>2-FIGURES / DIAGRAMS</u>	
USL-6000 LIFT LAYOUT	2-1
VEHICLE PLACEMENT	2-2
ELECTRICAL SCHEMATIC	2-3
RELIEF VALVE ADJUSTMENT PROCEDURE	2-4
ARM WASHERS	2-5
SAFETY WARNING LABELS	2-6
<u>3-PARTS</u>	<u>PAGE #</u>
PARTS DIAGRAM	1
POWER UNIT DOLLY ASSEMBLY	2
CYLINDER ASSEMBLY	3
PNEUMATIC TUBING & FITTINGS LIST	4
HYDRAULIC TUBING & FITTINGS LIST	5
PARTS LIST	6 & 7
<u>4-TOW BAR KIT</u>	
RELOCATION PROCEDURE	4-1
TOW BAR SETUP POSITION	4-2
TOW BAR PULLING POSITION	4-3
TOW BAR ASSEMBLY	4-4
PARTS LIST	4-5

ALL INFORMATION, ILLUSTRATIONS, AND SPECIFICATIONS IN THIS MANUAL ARE BASED ON THE LATEST PRODUCT INFORMATION AVAILABLE AT THE TIME OF PRINTING. WE RESERVE THE RIGHT TO MAKE CHANGES AT ANY TIME WITHOUT NOTICE.

IMPORTANT SAFETY INSTRUCTIONS

When using your garage equipment, basic safety precautions should always be followed, including the following:

1. Read all instructions.
2. Do not operate equipment with a damaged cord or if the equipment has been dropped or damaged - until it has been examined by a qualified serviceman.
3. Do not let cord or hoses come in contact with hot manifolds or moving fan blades.
4. If an extension cord is necessary, a cord with a current rating equal to or more than that of the equipment should be used. Cords rated for less current than the equipment may overheat. Care should be taken to arrange the cord so that it will not be tripped over or pulled.
5. Always unplug equipment from electrical outlet when not in use. Never use the cord to pull the plug from the outlet. Grasp plug and pull to disconnect
6. To reduce the risk of fire, do not operate equipment in the vicinity of open containers of flammable liquids (gasoline). **WARNING:** This equipment has internal arcing and sparking parts which should not be exposed to flammable vapors. This equipment is only suitable for installation in a garage having sufficient air circulation to be considered a non-hazardous location.
7. Adequate ventilation should be provided when working on operating internal combustion engines.
8. Keep hair, loose clothing, fingers, and all parts of body away from moving parts.
9. To reduce the risk of electric shock, do not use on wet surfaces or expose to rain.
10. Use only as described in this manual. Use only manufacturer's recommended attachments.
11. **ALWAYS WEAR SAFETY GLASSES.** Everyday eyeglasses only have impact resistant lenses, they are **NOT** safety glasses.

SAVE THESE INSTRUCTIONS

APPENDAGES

RECOMMENDATIONS BY THE INDIVIDUAL USER OR USING ORGANIZATION FOR IMPROVING THIS PUBLICATION OR ANY ASPECT OF THE PRODUCT ARE ENCOURAGED AND SHOULD BE FORWARDED IN WRITING TO :

**MOHAWK RESOURCES LTD.
PRODUCT IMPROVEMENTS
P.O. BOX 110
65 VROOMAN AVENUE
AMSTERDAM, NY, 12010**

THIS IS NOT A VEHICLE LIFTING PROCEDURE MANUAL AND NO ATTEMPT IS MADE OR IMPLIED HEREIN TO INSTRUCT THE USER IN LIFTING METHODS PARTICULARLY TO THE INDIVIDUAL APPLICATION OF THE EQUIPMENT DESCRIBED IN THIS MANUAL. RATHER, THE CONTENTS OF THIS MANUAL ARE INTENDED AS A BASE LINE FOR OPERATION, MAINTENANCE, TROUBLE SHOOTING, AND PARTS LISTING OF THE UNIT AS IT STANDS ALONE AND AS IT IS INTENDED AND ANTICIPATED TO BE USED IN CONJUNCTION WITH OTHER EQUIPMENT.

PROPER APPLICATION OF THE EQUIPMENT DESCRIBED HEREIN IS LIMITED TO THE PARAMETERS DETAILED IN THE SPECIFICATIONS AND THE USES SET FORTH IN THE DESCRIPTIVE PASSAGES. ANY OTHER PROPOSED APPLICATION OF THIS EQUIPMENT SHOULD BE DOCUMENTED AND SUBMITTED IN WRITING TO MOHAWK RESOURCES LTD. FOR EXAMINATION. THE USER ASSUMES FULL RESPONSIBILITY FOR ANY EQUIPMENT DAMAGE, PERSONAL INJURY, OR ALTERATION OF THE EQUIPMENT DESCRIBED IN THIS MANUAL OR ANY SUBSEQUENT DAMAGES.

DO NOT WELD, APPLY HEAT, OR MODIFY THIS EQUIPMENT IN ANY MANNER WITHOUT WRITTEN AUTHORIZATION FROM **MOHAWK RESOURCES LTD.** CERTAIN ALLOY OR HEAT-TREATED COMPONENTS MAY BE DISTORTED OR WEAKENED, RESULTING IN AN UNSAFE CONDITION.

MOHAWK RESOURCES LTD. IS NOT RESPONSIBLE FOR DISTORTIONS WHICH RESULT FROM WELDING ON THIS EQUIPMENT AFTER MANUFACTURING IS COMPLETED. UNAUTHORIZED WELDING, APPLICATION OF HEAT, OR MODIFICATION OF THIS EQUIPMENT VOIDS ANY AND / OR ALL APPLICABLE WARRANTIES COVERING THIS EQUIPMENT.

ALL WARRANTIES APPLICABLE TO THIS EQUIPMENT ARE CONTINGENT ON STRICT ADHERENCE TO THE MAINTENANCE SCHEDULES AND PROCEDURES IN THIS MANUAL.

KEEP ALL SHIELDS AND GUARDS IN PLACE. INSURE ALL SAFETY MECHANISMS ARE OPERABLE. KEEP HANDS, FEET, AND CLOTHING AWAY FROM POWER-DRIVEN AND MOVING PARTS.

WARNING

- DO NOT INSTALL THIS UNIT IN A PIT OR DEPRESSION DUE TO FIRE OR EXPLOSION RISK

IMPORTANT NOTE

A LEVEL FLAT FLOOR IS REQUIRED FOR PROPER OPERATION OF THIS UNIT. IF A FLOOR IS OF QUESTIONABLE SLOPE/PITCH, CONSIDER RELOCATING THE UNIT TO A MORE SUITABLE LOCATION. THIS UNIT MUST BE USED ON A STRUCTURALLY SOUND FLAT FLOOR.

CAUTION

THE EQUIPMENT DESCRIBED IN THIS MANUAL COULD BE POTENTIALLY DANGEROUS IF IMPROPERLY OR CARELESSLY OPERATED. FOR THE PROTECTION OF ALL PERSONS AND EQUIPMENT, ONLY COMPETENTLY TRAINED OPERATORS WHO ARE CRITICALLY AWARE OF THE PROPER OPERATING PROCEDURES, POTENTIAL DANGERS, AND SPECIFIC APPLICATION OF THIS EQUIPMENT SHOULD BE ALLOWED TO TOUCH THE CONTROLS AT ANY TIME.

SAFE OPERATION OF THIS EQUIPMENT IS DEPENDENT ON USE, IN COMPLIANCE WITH THE OPERATION PROCEDURES OUTLINED IN THIS MANUAL ALONG WITH THE MAINTENANCE AND INSPECTION PROCEDURES WITH CONSIDERATION OF PREVAILING CONDITIONS.

THE EQUIPMENT DESCRIBED IN THIS MANUAL IS NEITHER DESIGNED NOR INTENDED FOR ANY APPLICATION ALONE OR IN CONJUNCTION WITH ANY OTHER EQUIPMENT THAT INVOLVES THE LIFTING OR MOVING OF **PERSONS**.

ALWAYS CONSULT THE VEHICLE LIFTING GUIDE FOR THE PROPER LIFTING POINTS ON ANY VEHICLE. THESE GUIDES ARE AVAILABLE FROM THE VEHICLE MANUFACTURERS.

AFTER LIFTING THE VEHICLE TO THE DESIRED HEIGHT, ALWAYS LOWER THE UNIT ONTO THE MECHANICAL SAFETIES. THE FORMING OF GOOD OPERATIONAL WORK HABITS WILL ELIMINATE OVERSIGHTS IN THE USE OF PROVIDED SAFETY DEVICES.

USL-6000-K SPECIFICATIONS

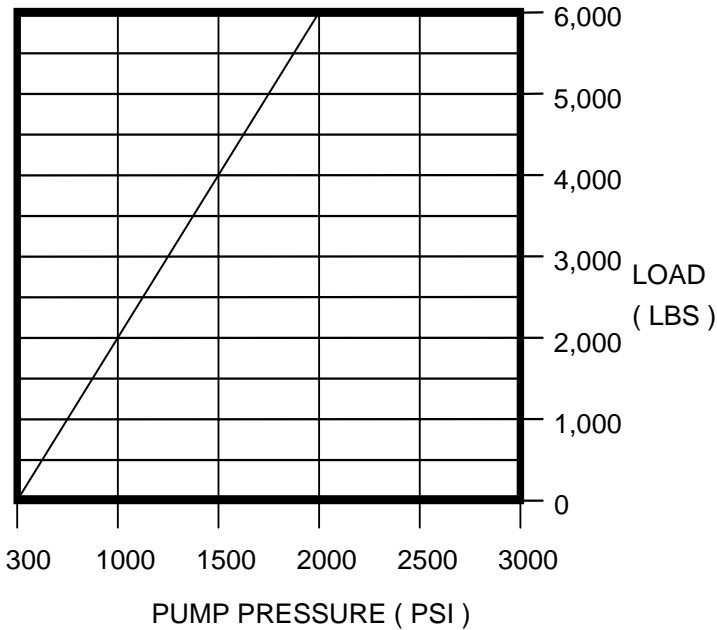
USL-6000-K SPECIFICATIONS

LIFT TYPE / SCISSOR	ELECTRIC / HYDRAULIC
LIFTING CAPACITY ON PLATFORMS	6,000 LBS.
LIFTING CAPACITY ON EXTENDED ARMS	4,000 LBS
LIFTING SPEED APPROX.	90 SECONDS
LIFTING HEIGHT (PAD)	72 1/2 INCHES
STROKE	67 INCHES
OVERALL LENGTH	98 1/2 INCHES
OVERALL WIDTH	45 3/8 INCHES
MINIMUM PLATFORM HEIGHT	4 3/4 INCHES
WIDTH BETWEEN PLATFORMS	23 3/4 INCHES
PLATFORM LENGTH	68 INCHES
PLATFORM WIDTH	9 INCHES
MECHANICAL LOCKS	MULTI-POSITION EVERY 6 INCHES
SHIPPING WEIGHT	1,950 LBS.

POWER UNIT SPECIFICATIONS

BRAND NAME	MONARCH
MODEL	M-4509-0104
POWER UNIT TYPE	VERTICAL
MOTOR VOLTAGE, VAC	115 VAC
F.L.A. AT RATED CAPACITY	13.6 AMP
MOTOR HORSEPOWER	1
MOTOR PHASE	SINGLE
MOTOR CYCLE / HERTZ	60
MOTOR SPEED (R.P.M.)	1725
PUMP FLOW (G.P.M.)	0.9 @ 1725 R.P.M.
RELIEF VALVE SETTING	2300 P.S.I.
MAX WORKING PRESSURE	2000 P.S.I.
RESERVOIR CAPACITY	3 GALLONS
HYDRAULIC FLUID MEDIUM	DEXRON III

PERFORMANCE TABLE



SUGGESTED SITE SELECTION / BAY SIZE

WIDTH	DEPTH	HEIGHT
9 FEET	18 FEET	10 FEET

NOTE

THE PLACEMENT OF THE UNIT IS DETERMINED BY THE TYPE (LENGTH, WIDTH, HEIGHT) OF VEHICLE BEING SERVICED.

MOHAWK MODEL USL-6000-K SETUP

IMPORTANT

READ THIS MANUAL IN ITS ENTIRETY. BE FAMILIAR WITH PART NAMES AND HAVE A GOOD UNDERSTANDING OF HOW THIS UNIT IS ASSEMBLED AND HOW INDIVIDUAL PARTS OPERATE BEFORE ASSEMBLING THE UNIT.

NOTE

THE PLACEMENT OF THE UNIT IS DETERMINED BY THE TYPE (LENGTH, WIDTH, HEIGHT) OF VEHICLE BEING SERVICED. ALLOW AMPLE ROOM (THREE TO FOUR FEET) FOR WALKWAYS ETC.

REVIEW THE **PACKING LIST (PG 1-4)** IN THIS MANUAL TO VERIFY ALL SUPPLIED PARTS. IF MISSING PARTS ARE NOTED, THEY CAN BE OBTAINED BY CONTACTING YOUR LOCAL MOHAWK DISTRIBUTOR, BY CALLING **1-800-833-2006** OR FAXING TO **1-518-842-1289**. REQUESTS CAN ALSO BE SENT BY E-MAIL TO **TECHSUPPORT@MOHAWKLIFTS.COM**

CUT ALL BANDING AND DISCARD. REMOVE LIFT AND SHIPPING CRATE FROM PALLET. REMOVE POWER UNIT DOLLY SUB-ASSEMBLY FROM CRATE AND ASSEMBLE WHEELS. **SEE POWER UNIT DOLLY ASSEMBLY DIAGRAM (PG 3-5)**

REMOVE THE TANK PLUG ON THE POWER UNIT RESERVOIR AND DISCARD.

VERIFY FLUID LEVEL. LEVEL SHOULD BE 1/2 INCH BELOW UPPER TANK PORTS ON THE POWER UNIT RESERVOIR WHEN UNIT IS FULLY LOWERED. INSTALL THE BREATHER CAP.

CONNECT INCOMING AIR SUPPLY TO POPPET VALVE BESIDE POWER UNIT. **SEE PNEUMATIC TUBING & FITTING LIST (PG 2-4)**.

CONNECT HYDRAULIC LINE AND AIR LINE FROM POWER UNIT TO CONNECTIONS AT LIFT. ENSURE THAT ALL FITTINGS ARE TIGHTENED. **SEE HYDRAULIC AND PNEUMATIC TUBING & FITTING LISTS (PG 2-3 & 2-4)**.

CONNECT THE PIVOT PADS TO THE PLATFORMS USING THE PIVOT PAD PINS AND WASHERS. NOTE SPECIFIC PLACEMENT OF WASHERS. **(REFER TO PG 3-2)**

CONNECT INCOMING POWER TO POWER UNIT. **SEE ELECTRICAL SCHEMATIC (PG 2-5)**

BLEEDING HYDRAULIC SYSTEM:

RAISE UNIT FULLY. FOR NEXT STEP, HAVE CLOTH AVAILABLE TO WIPE UP DRIPPING HYDRAULIC FLUID.

- CAUTION -

THE FOLLOWING PROCEDURE CAN BE INHERENTLY DANGEROUS IF NOT PERFORMED TO THE FOLLOWING PROCEDURE. **ALWAYS USE CAUTION WHEN BLEEDING UNIT**, AND NEVER REMOVE PLUGS FULLY. BE AWARE AND STAY CLEAR OF ANY PROJECTING FLUID.

SLOWLY AND CAREFULLY LOOSEN

(DO NOT REMOVE) PLUGS ON ENDS OF BOTH BARRELS OF CYLINDERS UNTIL AIR BUBBLES FORM (APPROXIMATELY A QUARTER TO HALF A FULL TURN). WAIT FOR CYLINDERS TO FINISH VENTING TRAPPED AIR. TIGHTEN PLUGS. FULLY LOWER UNIT.

RAISE UNIT FULLY AND OBSERVE SMOOTH LIFTING. IF LIFT IS VIBRATING WHILE LIFTING, REPEAT PROCEDURE FOR BLEEDING HYDRAULIC SYSTEM.

FULLY CYCLE THE UNIT THREE TIMES TO FAMILIARIZE YOURSELF WITH THE FUNCTIONS OF THE UNIT, AND TO ALLOW ALL AIR TO BE REMOVED FROM THE HYDRAULIC SYSTEM. ENSURE PROPER LOCK ENGAGEMENT & TEST LOCK DISENGAGEMENT BY PRESSING THE LOCK RELEASE BUTTON ON THE POWER UNIT DOLLY ASSEMBLY.

MUST BE INITIALED & SIGNED		
USL-6000-K PARTS BOX CONTENTS:		
File: QC-USL-6000-K.xls	Rev: 4/6/2009	
NAME	DESCRIPTION	QTY
006-030-000	Main Components	
006-030-188	USL-6000-K Scissor Lift Assembly	1
601-600-030	Pallet, 48" x 100"	1
601-600-055	Shipping Carton	1
006-030-105	Tow Bar	1
006-030-189	P.U.Cart	1
006-010-008	Shipping Carton Packing	
601-300-048	Power Unit w/ Switch & Plug	1
601-620-031	Rubber Block, 1" Thk x 4" x 4"	8
006-030-114	Height Adapter, 3"	4
025-002-126	Height Adapter Bracket	1
006-030-115	Lifting Pad Weldment, USL-6000-K	4
601-630-001	Spray Paint, Red	1
601-630-002	Spray, Paint, Yellow	1
006-010-190	Manual Assembly, USL-6000-K	1
006-030-116	Pivot Pad Pin, 2" Hex x 1 13/16 Lg	4
006-030-113	Pivot Pad, 3/4 Thk x 6" x 15 3/8	4
006-010-046	Hose Assembly, 1/4 x 18 Feet Long (Hyd)	1
006-010-432	Hose, Black Plastic, 1/4" Tube x 234" Long (Air)	1
601-800-054	Safety Warning Placard, Plastic	1
006-030-185	Bolt, M12 x 75 (W/Tow Bar Option)	1
006-030-186	Nut, Plain, M12 (w/Tow Bar Option)	1
006-030-106	Tow Bar Support Weldment	1
006-010-082	Parts Bag	1
006-030-146	Power Unit Dolly Leg	1
006-010-082	Parts Bag	
006-010-184	Main Pivot Shim (Pivot Pad Washer) 1 1/2"	4
007-007-178	Washer, 13 gauge x 2 1/2 OD x 1.406 ID	4
600-710-010	Washer, Flat, 1"	2
601-310-005	Breather Cap	1
601-520-002	Elbow, 90 Deg, 1/8 NPT To 1/4" Tube	2
006-030-177	Quick Coupler, 1/4 Female NPT, Sleeve Type, 1/4" Body (Air)	1
006-030-178	Reducer, 1/4 Male Pipe to 1/8 Fem Pipe	1
006-030-182	Quick Coupler, 3/8 Female NPT, Sleeve Type (Hyd)	1
006-030-183	3/8 Street 90 Degree	1
601-420-004	Straight, 3/8 Male Pipe to #6 JIC	1
601-420-017	Elbow, 90 Deg, #6 ORB To #6 JIC	1
601-420-121	Elbow, 90 Deg, 1/4" Female NPT To 1/8" Male NPT	1
601-510-004	Poppet Valve, Pneumatic, 3-Way	1
601-510-005	Poppet Valve Push Button W/Allen Wrench	1
601-600-029	Plastic Pull Tie, 8 1/2" Long	25
006-010-197	Front Pivot Pad Shim Washer, 16 Ga x 2 1/2 OD x 1.033 ID	2
600-640-001	Bolt, 5/16-18 NC x 1" Lg, Grd 5	4
600-710-003	Washer, Flat, 5/16	4
600-690-001	Nut, Lock, 5/16-18 NC	4
	Checked By:	

SAFETY TIPS

PLEASE POST THESE SAFETY TIPS IN A PLACE WHERE THE OPERATOR WILL BE CONSTANTLY REMINDED OF THEIR IMPORTANCE. ALWAYS REFER TO THE LIFTS SPECIFIC SAFETY, OPERATING AND MAINTENANCE INSTRUCTIONS.

(A COPY IS INCLUDED IN THE PARTS BOX)

WARNING !!

ALWAYS PLACE VEHICLE'S CENTER OF GRAVITY OVER INDICATED MARK ON PLATFORMS TO ENSURE SAFE LEVEL LIFTING. OFF CENTER LIFTING CAN RESULT IN A DANGEROUS AND UNSTABLE CONDITION THAT COULD CAUSE DAMAGE TO THE VEHICLE AND MAY RESULT IN BODILY HARM TO THE OPERATOR. (REFER TO FIGURE 2-2 FOR PROPER PLACEMENT OF VEHICLE)

- OPERATING VALVES, SWITCHES, AND LOCKING DEVICES ARE DESIGNED FOR MAXIMUM SAFETY. **NEVER** ATTEMPT TO BLOCK OR OVERRIDE THEM.
- **NEVER** OVERLOAD YOUR LIFT BEYOND STATED LIFTING CAPACITY.
- **DO NOT** ALLOW CUSTOMERS OR BY-STANDERS TO OPERATE THE LIFT OR TO BE IN A LIFTING AREA DURING ITS OPERATION. ONLY PROPERLY TRAINED PERSONNEL SHOULD BE ALLOWED TO OPERATE THE UNIT. EVERY EFFORT SHOULD BE MADE TO KEEP FEET AND ARMS FROM BENEATH THE UNIT AND AWAY FROM PINCH POINTS WHILE RAISING AND LOWERING LIFT.
- **NEVER** RAISE A VEHICLE WITH PERSONS INSIDE.
- **NEVER** ATTEMPT TO OPERATE A LIFT IF IT APPEARS TO BE MALFUNCTIONING OR IF BROKEN OR DAMAGED PARTS ARE EVIDENT.
- BE SURE WORK AREA AROUND THE LIFT IS CLEAR AND FREE OF OBSTRUCTIONS. (DEBRIS, GREASE, OIL, ETC.)
- PERFORM THE PRE-OPERATION CHECK LIST, PER INSTRUCTIONS, BEFORE RAISING VEHICLE TO DESIRED HEIGHT.
- BEFORE REMOVING VEHICLE FROM THE LIFT AREA, REMOVE THE RUBBER LIFT PADS, HEIGHT ADAPTERS AND / OR SWING ARMS FROM BENEATH THE VEHICLE.
- ALWAYS REMOVE TOW BAR AND TOW BAR SUPPORT FROM LIFT PRIOR TO POSITIONING VEHICLE OVER LIFT AND PRIOR TO RAISING LIFT.
- **DO NOT** STACK RUBBER LIFTING PADS MORE THAN 2 HIGH.

PRE - OPERATION CHECK LIST

TRAINED OPERATOR

- THE OPERATOR MUST BE FULLY TRAINED AND QUALIFIED TO SAFELY AND EFFECTIVELY OPERATE THIS EQUIPMENT OF THIS SPECIFIC MAKE AND MODEL.

ABSENCE OF OBSTRUCTIONS

- THE TOTAL WORK AREA MUST BE FREE OF ANY AND ALL OBSTRUCTIONS AND BE GENERALLY CLEAN. (FREE OF OIL AND DEBRIS)

VISUAL INSPECTION

- THOROUGHLY INSPECT THE UNIT WITH A TRAINED EYE, NOTING ANY PROBLEM AREAS. REPORT ANY QUESTIONABLE ITEMS AND MAKE ADJUSTMENTS/ REPAIRS AS NEEDED.

NO LOAD PERFORMANCE CHECK

- ALL MECHANICAL SAFETIES OPERATE PROPERLY AND CONSISTENTLY.
- NO EXTERNAL FLUID LEAKS.
- NO BLEED DOWN.
- EFFORTLESS AND SIMULTANEOUS MOVEMENT.
- LEVEL LIFTING.
- CONTROLS FUNCTION PROPERLY.
- TOW BAR AND TOW BAR SUPPORT ARE REMOVED FROM UNIT.

PREVIOUS DAY' S OPERATION REPORT

- VERIFY WITH SUPERVISOR THAT THERE WERE NO PROBLEMS EXPERIENCED THE PREVIOUS DAY. IF THERE WERE ANY PROBLEMS, VERIFY THAT ALL NECESSARY REPAIRS HAVE BEEN COMPLETED.

LIFTING PROCEDURES

OPERATION

PERFORM PRE-OPERATION CHECK LIST ITEM BY ITEM.

ENSURE UNIT IS COMPLETELY LOWERED.

POSITION THE VEHICLE ONTO THE UNIT. ENSURE THAT TIRES STRADDLE LIFT PLATFORMS WITH ADEQUATE CLEARANCE

POSITION THE VEHICLE AS INDICATED BY THE MFG'S RECOMMENDED LIFT POINTS. REFER TO VEHICLE FRAME LIFT POINT GUIDE SUPPLIED WITH LIFT.

NOTE

- ALIGN THE CENTER OF GRAVITY (C.G.) OF THE VEHICLE WITH THE MARK INDICATED ON THE LIFTING PLATFORMS.

POSITION SWING ARMS, LIFTING PADS, HEIGHT ADAPTERS, RUBBER PADS AND/OR ANY COMBINATION THEREOF UNDER FRAME CONTACT POINTS OF THE VEHICLE TO BE RAISED. FOLLOW INSTRUCTIONS FOR RAISING UNIT. RAISE UNIT APPROXIMATELY THREE INCHES. ENSURE PROPER PAD ENGAGEMENT WITH VEHICLE.

TO RAISE

- ENGAGE THE UP-BUTTON ON THE POWER UNIT.
- RAISE VEHICLE TO THE DESIRED WORKING HEIGHT.
- LOWER THE UNIT ONTO THE MECHANICAL SAFETIES.

TO LOWER

- INSPECT THE LIFTING AREA TO INSURE THAT ALL PERSONNEL AND DEBRIS HAVE BEEN CLEARED FROM THE LIFTING AREA.
- ENGAGE THE UP-BUTTON ON THE POWER UNIT.
- RAISE UNIT APPROXIMATELY TWO TO THREE INCHES.
- DISENGAGE THE MECHANICAL SAFETIES BY PRESSING AND HOLDING THE LOCK RELEASE BUTTON.
- LOWER UNIT TO THE DESIRED WORKING HEIGHT BY PULLING THE DOWN HANDLE.
- LOWER THE UNIT ONTO THE MECHANICAL SAFETIES BY RELEASING THE LOCK RELEASE BUTTON AND CONTINUING TO HOLD THE DOWN HANDLE.
- IF WORK IS COMPLETE, CONTINUE LOWERING THE UNIT TO FLOOR WHILE MAINTAINING THE LOCK RELEASE BUTTON.

MAINTENANCE PROCEDURES

QUALIFIED MAINTENANCE PERSONNEL ONLY

DAILY

- PERFORM THE PRE-OPERATION CHECK LIST.
- REPORT ANY AND ALL EQUIPMENT MALFUNCTIONS IMMEDIATELY.
- CLEAN ALL MOVING PARTS. IF OXIDIZATION IS OCCURRING USE A LIGHT LUBRICANT. (WD - 40 OR EQUIVALENT)
- KEEP AREA AROUND THIS EQUIPMENT FREE OF DIRT, SAND, WATER, ETC.

WEEKLY

PERFORM THE DAILY OPERATION CHECK LIST.

WIPE CLEAN, THE CYLINDERS' WIPER SEALS. REMOVE ANY WEEPING OIL AND DUST.

VERIFY FLUID LEVEL. WITH THE UNIT FULLY LOWERED, THE FLUID LEVEL WILL BE 1/2 INCH BELOW THE BREATHER CAP PORT. USE DEXRON III AS REPLACEMENT FLUID.

CYCLE UNIT TO FULL HEIGHT, NOTE ANY UNUSUAL NOISES, INSPECT UNIT FOR WORN OR DEFORMED PARTS.

MONTHLY

INSPECT ALL HYDRAULIC COMPONENTS FOR LEAKS, DEFORMATION, WEAR OR CORROSION.

TIGHTEN ALL FASTENERS AND HYDRAULIC FITTINGS AS REQUIRED.

1. ALL O - RING BOSS FITTING JAM NUTS ARE TO BE TIGHTENED TO 15 FOOT POUNDS TORQUE.
2. ALL PIPE FITTINGS, IF LEAKING ARE TO BE REMOVED, RE-SEALED, AND RE - INSTALLED. (SELECT - UNITE THREAD SEALANT OR EQUIVALENT ON FITTING THREADS)

INSPECT ALL BUSHINGS FOR UNUSUAL OR EXCESSIVE WEAR.

SEMI- ANNUAL TRAINING

QUALIFY / RE-QUALIFY ALL PERSONNEL IN THE SAFE OPERATION OF THIS UNIT.

ANNUALLY

REPLACE AND RE-BLEED THE HYDRAULIC FLUID. ALWAYS USE A CLEAN FUNNEL AND FILTER. USE DEXRON III HYDRAULIC FLUID.

INSPECT ALL BUSHINGS FOR UNUSUAL OR EXCESSIVE WEAR.

PERFORM THE DAILY, WEEKLY, AND MONTHLY MAINTENANCE PROCEDURES.

TROUBLE SHOOTING

WARNING : NEVER ATTEMPT TO LOOSEN HYDRAULIC FITTINGS, OR OVERRIDE SAFETY DEVICES IN AN ATTEMPT TO CORRECT A PROBLEM. ALL TESTS ARE TO BE PERFORMED WITH **NO** VEHICLE.

NOT RAISING LOAD	
POSSIBLE CAUSE	SOLUTION
LOW HYDRAULIC FLUID LEVEL	LOWER UNIT. REMOVE RESERVOIR BREATHER CAP. FILL UNIT TO WITHIN 1/2 INCH BELOW PORT. USE DEXRON III TRANSMISSION / HYDRAULIC FLUID.
PRESSURE RELIEF ADJUSTMENT	REFER TO POWER UNIT SPECIFICATIONS.
PRESSURE RELIEF CONTAMINATION	REFER TO POWER UNIT SPECIFICATIONS. REMOVE AND CLEAN DEBRIS FROM VALVE ASSEMBLY.
VOLTAGE TO POWER UNIT	REFER TO POWER UNIT SPECIFICATIONS. CONSULT AN ELECTRICIAN
UNIT OVERLOADED	VEHICLE TOO HEAVY TO BE RAISED
NOT LOWERING	
MECHANICAL LOCKS ENGAGED	RAISE UNIT. DISENGAGE MECHANICAL LOCKS.
NO AIR TO LOCK RELEASE CYLINDER	ENSURE AIR PRESSURE TO LOCK RELEASE SYSTEM (40 PSI MINIMUM)
OBSTRUCTION UNDER VEHICLE OR LIFT	REMOVE OBSTRUCTION.
RAISING UNEVEN	
SHOP FLOOR UNEVEN	USE ON CLEAN, FLAT, LEVEL SURFACE.
VEHICLE NOT PROPERLY CENTERED.	MAKE NECESSARY ADJUSTMENTS TO CENTER VEHICLE. VEHICLE C.O.G. TO BE POSITIONED OVER MARKERS INDICATED ON SIDES OF PLATFORMS
SLOW DRIFT DOWN	
POSSIBLE CAUSE	SOLUTION
SAFETIES NOT ENGAGED	RAISE UNIT TO RE-ENGAGE SAFETIES. THEN LOWER UNIT ONTO SAFETIES.
POWER UNIT LOWERING VALVE CONTAMINATION	BACK FLUSH POWER UNIT : PULL DOWN ON THE LOWERING HANDLE, THEN ENGAGE THE UP BUTTON AT THE SAME TIME. RUN UNIT APPROX. 10 SEC.
EXTERNAL HYDRAULIC LEAKS (NOTE: TIGHTEN ALL FITTINGS PER SPECIFICATIONS.)	
POSSIBLE CAUSE	SOLUTION
CYLINDER SEAL	THOROUGHLY CLEAN THE CYLINDER. VERIFY LEAK ORIGIN. FITTINGS ARE TO BE TIGHTENED PER SPECIFICATIONS
BAD FLAIR OR FITTING	REMOVE THE HYDRAULIC TUBING AND INSPECT FLAIR AND FITTING FOR DEFORMATION. REPLACE IF NEEDED.
BAD O-RING (O-RING TYPE FITTINGS)	CHANGE O-RING
LOOSE PIPE FITTING	REMOVE, RESEAL, AND RE-INSTALL FITTING. SEAL ALL PIPE FITTING CONNECTIONS WITH THREAD SEALANT MOHAWK PART # 601-610-002 NOTE: DO NOT USE TEFLON TAPE.

MOHAWK

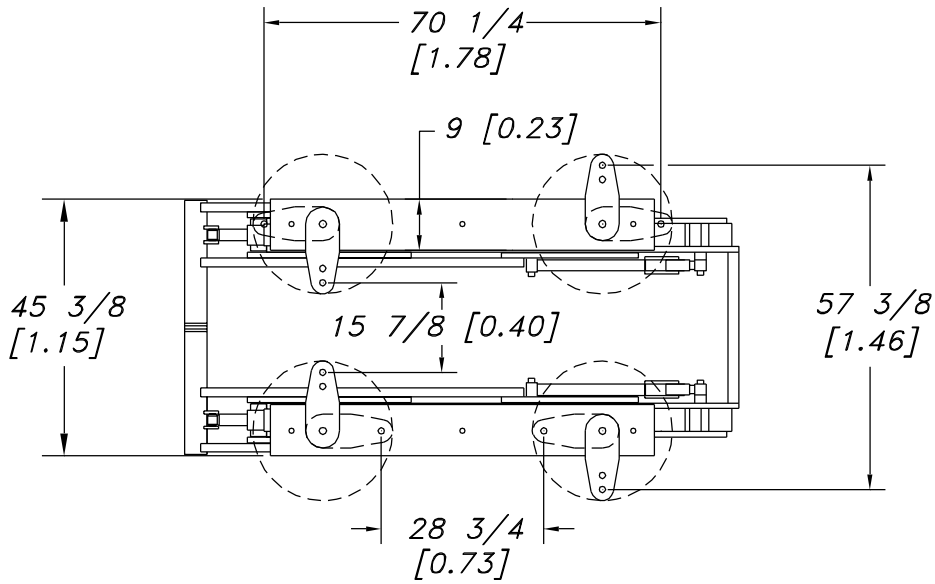
MODEL USL-6000-K

FIGURES/DIAGRAMS

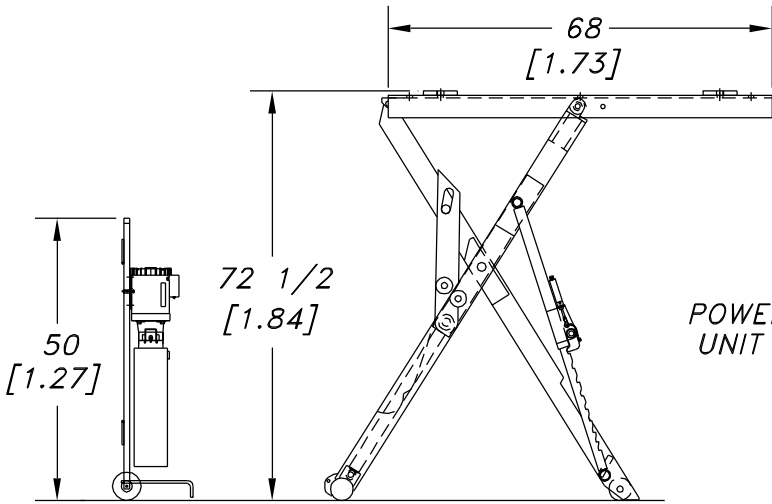


MOHAWK RESOURCES LTD.

TOP VIEW
LOWERED UNIT

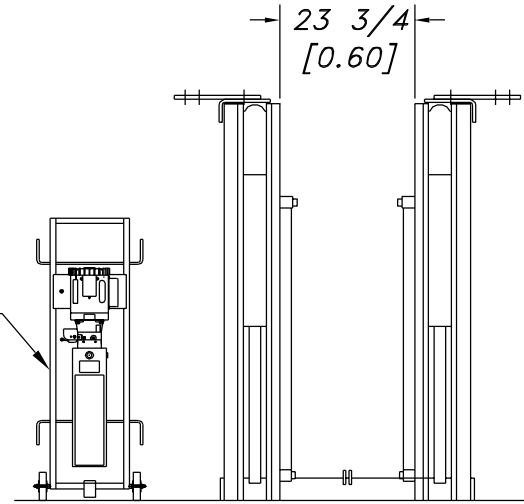


SIDE VIEW
RAISED UNIT

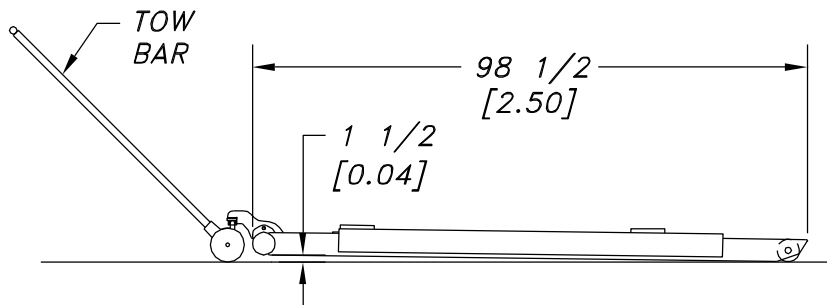


POWER
UNIT

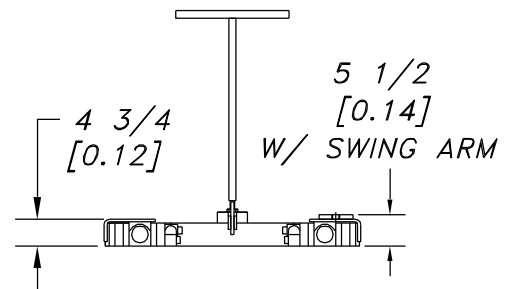
FRONT VIEW
RAISED UNIT



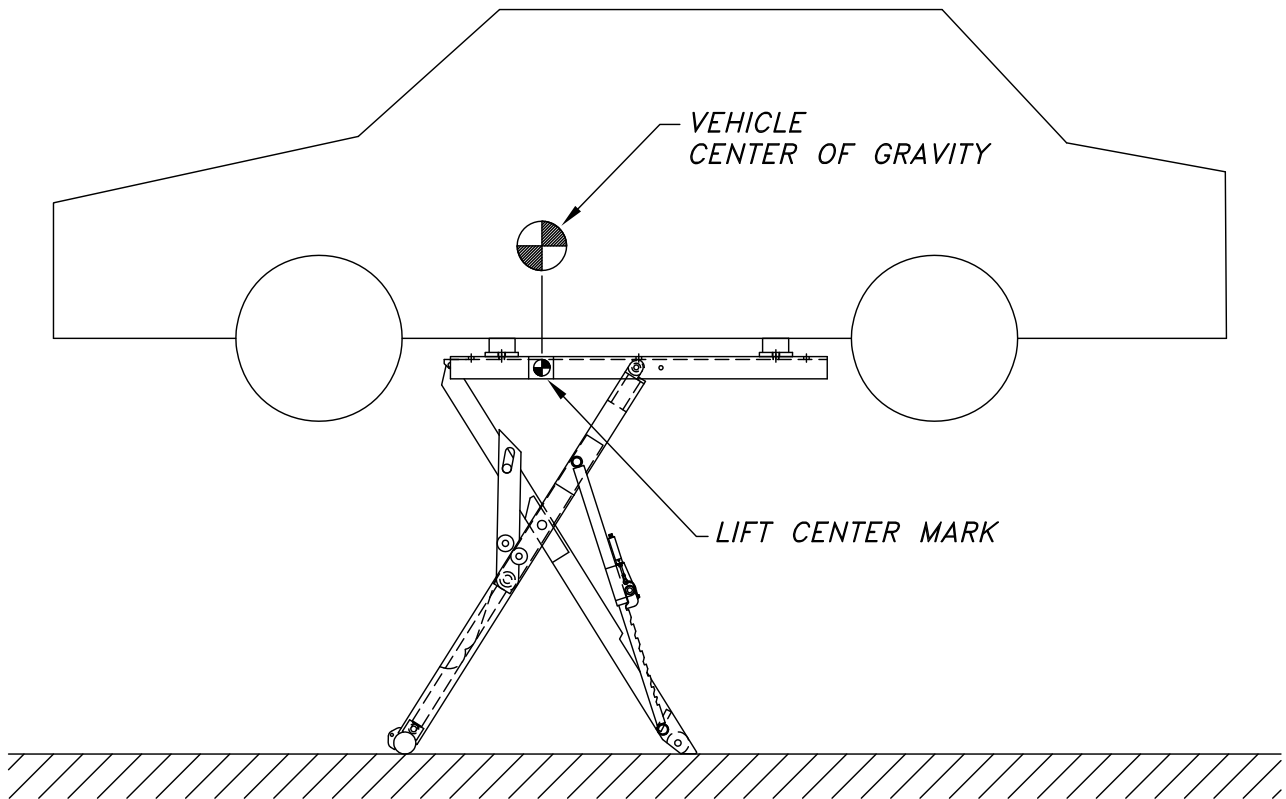
SIDE VIEW
LOWERED UNIT



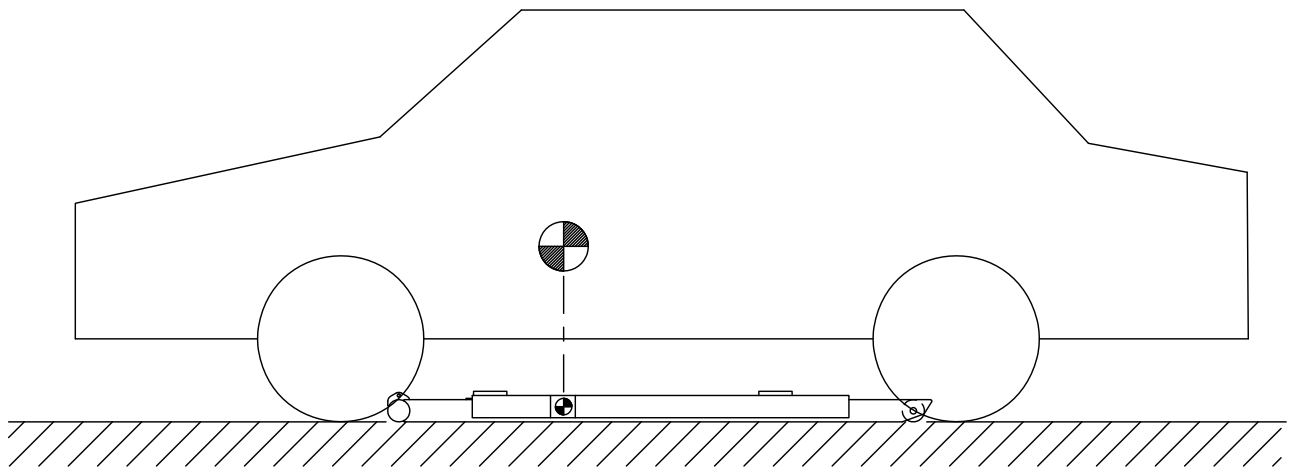
FRONT VIEW
LOWERED UNIT



SIDE VIEW
RAISED UNIT



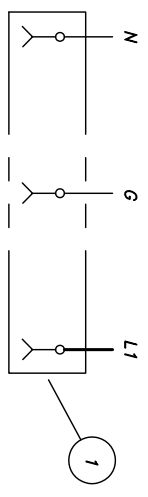
SIDE VIEW
LOWERED UNIT



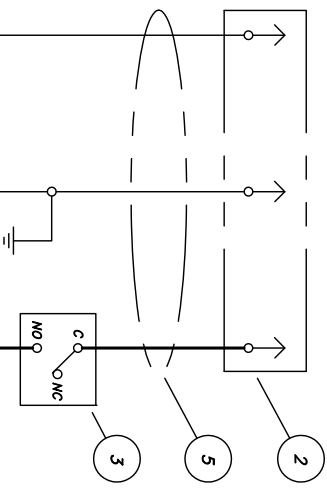
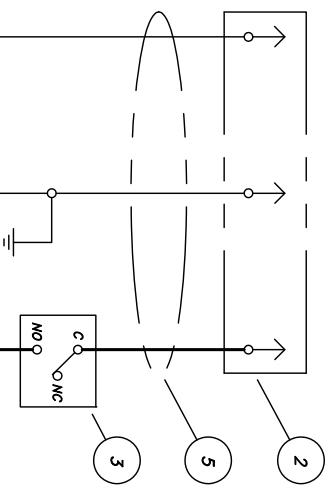
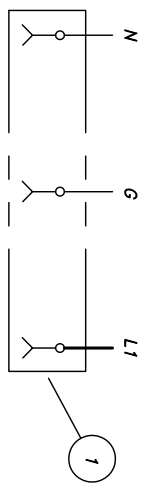
NOTE: ALWAYS POSITION VEHICLE'S CENTER OF GRAVITY
DIRECTLY ABOVE LIFT CENTER MARK.

REV.	DESCRIPTION	DATE	BY	APP'D.
A	ITEM 6 ADDED WITH NEW ALTERNATE SCHEM.	6/12	R.V.	

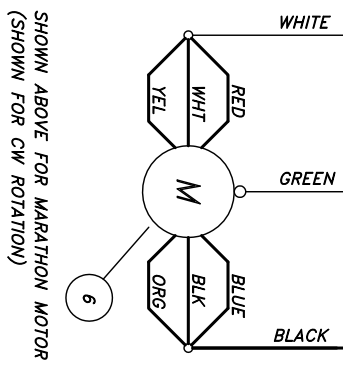
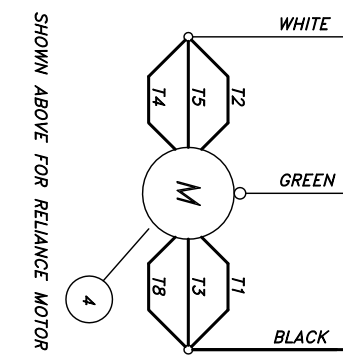
PRE-2010 SCHEMATIC



ALTERNATE (2012) SCHEMATIC



- NOTES:
1. ALL ELECTRICAL EQUIPMENT AND WIRING SHALL CONFORM TO ANSI/NFPA 70-1990, NATIONAL ELECTRICAL CODE.
 2. IT SHALL BE THE RESPONSIBILITY OF THE OWNER/EMPLOYER TO PROVIDE NECESSARY LOCKOUTS/TAGOUTS OF ENERGY SOURCES IN ACCORDANCE WITH ANSI Z244.1-1982, BEFORE ATTEMPTING REPAIRS.
 3. ALL FIELD WIRING/ELECTRICAL RELATED LABOR SHALL BE PERFORMED BY CERTIFIED ELECTRICIANS.
 4. UNIT MUST BE PROPERLY GROUNDED IN ACCORDANCE TO NEC ARTICLE 250 (GROUNDING), AND APPLICABLE LOCAL CODES.
 5. THE FOLLOWING COLOR WIRES SHALL BE RESERVED:
GREEN: ALL EQUIPMENT GROUND CONDUCTORS.
WHITE: ALL NEUTRAL CONDUCTORS.



1 HP, SINGLE PHASE
115 VAC, 3450 RPM, 60 HZ
RATING: 13.6 FULL LOAD AMPS @ 115 VAC

C-SIZE

NOTICE OF CONFIDENTIAL INFORMATION

INFORMATION CONTAINED HEREIN IS CONFIDENTIAL AND PROPERTY OF MOHAWK RESOURCES LTD., WHERE DRAWING IS FURNISHED TO OTHERS IT SHALL BE USED SOLELY FOR PURPOSES OF INSPECTION, INSTALLATION, OR MAINTENANCE. THE INFORMATION SHALL NOT BE USED OR DISCLOSED BY THE RECIPIENT FOR ANY OTHER PURPOSES WHATSOEVER.

NOTES:

1. REMOVE ALL SHARP CORNERS & EDGES.
2. UNLESS OTHERWISE SPECIFIED, SURFACE FINISH TO BE 120 RAAS.
3. WELDING MEDIUM SHALL CONFORM TO AMS B-7011 CODE 5.3 FLUX CORE WIRE ONLY.

TOLERANCES:

ANGULAR	± 1°
FRACTIONAL	± .030
DECIMAL	± .005
XXX	± .005

FILE NAME
R10090

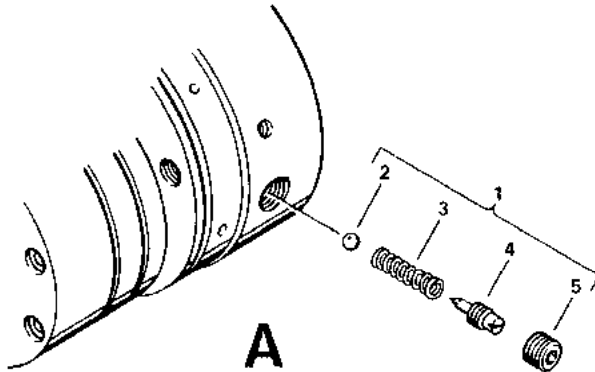
SCALE	N/A
CHECKED	APPROVED
DATE	10/97
WRIGHT	N/A
LB.	N/A
FROM	N/A
DRAWING NUMBER	006-010-090
NEXT ASSEMBLY	

ITEM	PART NUMBER	DESCRIPTION	QTY
6	601-180-029	MOTOR, 1 HP, 115/230 VAC, 1 PHASE MARATHON #56C17T15528AP (BUCHER 08214-M)	1 REF
5	601-150-034	CONDUCTOR, #14/3, SOW-A/SO, 19" (+1"/-0") ROYAL #W4334	1 REF
4	601-180-017	MOTOR, 1 HP, 115/230 VAC, 1 PHASE RELIANCE ELECTRIC "DUTY MASTER S-2000"	1 REF
3	601-110-001	SWITCH, MICRO, 20 AMP RATED MICRO SWITCH #BA-2RQ1-A4	1 REF
2	601-170-005	PLUG, 3 PRONG, 15A, 120V, SINGLE PHASE NEMA #5-15P	1 REF
1	601-170-006	CONNECTOR, 3 PRONG, 15A, 120V, SINGLE PHASE NEMA 5-15C	1 REF

MOHAWK RESOURCES LTD.



RELIEF VALVE ADJUSTMENT PROCEDURE



RELIEF VALVE ADJUSTMENT PROCEDURE "A"
FOR UNITS MADE BEFORE APRIL 1, 1991.

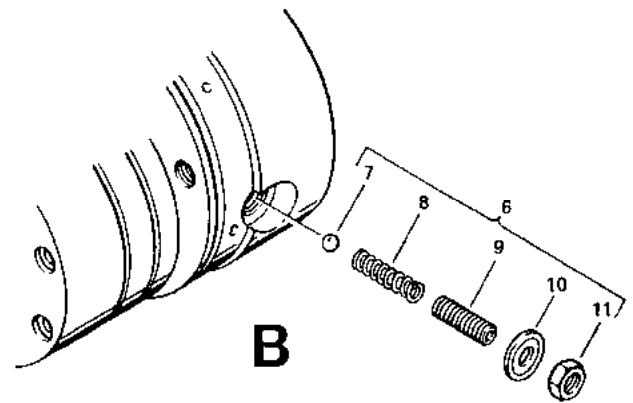
1. REMOVE FLUSH PLUG.
2. TURN SCREW CLOCKWISE TO INCREASE PRESSURE.
3. TURN SCREW COUNTER-CLOCKWISE TO DECREASE PRESSURE.

NOTE

OUTLET PORT FLOW MUST BE BLOCKED TO MAKE RELIEF VALVE OPERATE WHILE ADJUSTING.

4. REINSTALL FLUSH PLUG.

Ref. No.	Part No.	Description	No. Req.
1	02222	PARTS KIT, Relief Valve	1
2	00012	• BALL, 1/4" DIA., chrome, steel	1
3	02221	• SPRING, Relief Valve (Std.)	1
	00147	• SPRING, Relief Valve, 2,500 PSI & up (opt.)	1
4	07640	• SCREW, Adjusting Relief, 3/8-16	1
5	02350	• PLUG, Pipe, Flush 1/4 NPTF	1



RELIEF VALVE ADJUSTMENT PROCEDURE "B"
FOR UNITS MADE AFTER APRIL 1, 1991.

1. LOOSEN JAM NUT.
2. TURN SCREW CLOCKWISE TO INCREASE PRESSURE.
3. TURN SCREW COUNTER-CLOCKWISE TO DECREASE PRESSURE.

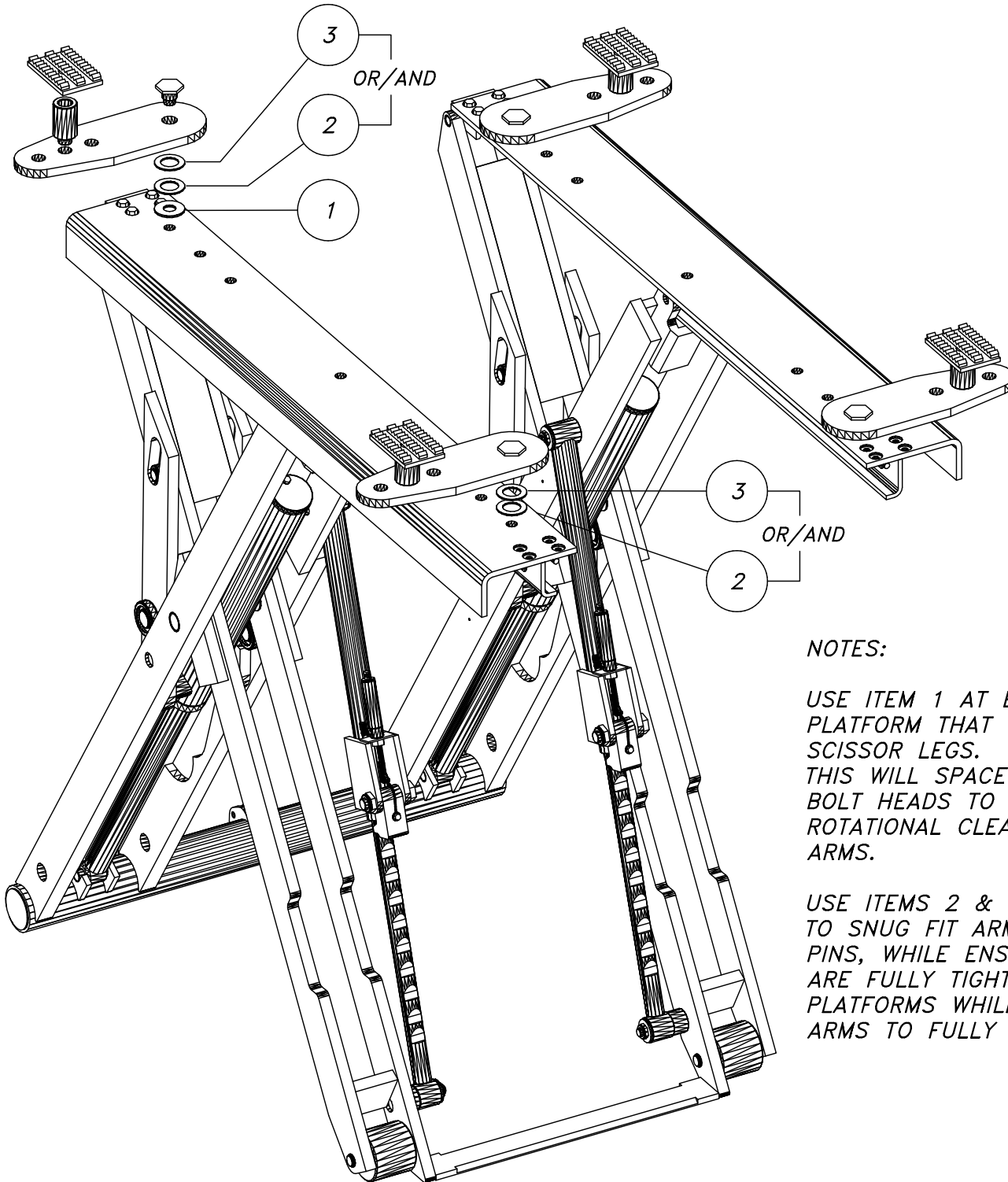
NOTE

OUTLET PORT FLOW MUST BE BLOCKED TO MAKE RELIEF VALVE OPERATE WHILE ADJUSTING.

4. TIGHTEN JAM NUT.

Ref. No.	Part No.	Description	No. Req.
6	03766	PARTS KIT, Relief Valve	1
7	00012	• BALL, 1/4" DIA., chrome, steel	1
8	02221	• SPRING, Relief Valve (Std.)	1
	00147	• SPRING, Relief Valve, 2,500 PSI & up (opt.)	1
9	00387	• SCREW, Socket Set, 3/8-16, oval point	1
10	03874	• SEAL, Washer	1
11	07891	• NUT, Hex, jam, 3/8-16	1

USL-6000 ARM WASHERS



NOTES:

USE ITEM 1 AT END OF PLATFORM THAT IS BOLTED TO SCISSOR LEGS. THIS WILL SPACE ARMS OVER BOLT HEADS TO ALLOW FULL ROTATIONAL CLEARANCE OF ARMS.

USE ITEMS 2 & 3 AS NEEDED TO SNUG FIT ARMS OVER PINS, WHILE ENSURING PINS ARE FULLY TIGHTENED TO PLATFORMS WHILE ALLOWING ARMS TO FULLY ROTATE.


3	007-007-178	WASHER 2 1/2 OD x 1 7/16 ID x 13 Ga (0.0897) Thk	REF
2	006-010-184	MAIN PIVOT SHIM (PIVOT PAD WASHER) 2 1/2 OD x 1 1/2 ID x 11 Ga (0.1196) Thk	REF
1	600-710-010	WASHER, FLAT, 1" 2 1/2 OD x 1 1/16 ID x 0.172 Thk	REF
ITEM	PART NUMBER	DESCRIPTION	QTY

⚠ CAUTION




Lift to be used by trained operator only.

Power Unit: Secure placard near lift controls.



Lift Control Console: Secure placard in an accessible location.



The messages and pictographs shown are generic in nature and are meant to generally represent hazards common to all automotive lifts regardless of specific style.

Funding for the development and validation of these labels was provided by the Automotive Lift Institute, PO Box 33116 Indialantic, FL 32903.

They are protected by copyright. Set of labels may be obtained from ALI or its member companies.

© 1992 by ALI, Inc. ALI/WL300caw

⚠ CAUTION



Authorized personnel only in lift area.

⚠ CAUTION



Use vehicle manufacturer's lift points.

⚠ CAUTION



Always use safety stands when removing or installing heavy components.

SAFETY INSTRUCTIONS



Read operating and safety manuals before using lift.

SAFETY INSTRUCTIONS



Proper maintenance and inspection is necessary for safe operation.

SAFETY INSTRUCTIONS



Do not operate a damaged lift.

SAFETY WARNING LABELS FOR HINGED FRAME ENGAGING LIFTS

Lift Owner/User Responsibilities:

- A. This Safety Warning placard **SHALL** be displayed in a conspicuous location in the lift area.
- B. Use one of the mounting arrangements illustrated on back of this placard.
- C. These Safety Warning labels supplement other documents supplied with the lift.
- D. Be certain all lift operators read and understand these labels, operating instructions and other safety related information supplied with the lift.



MOHAWK

MODEL USL-6000-K

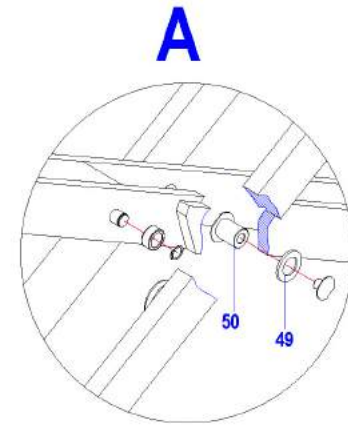
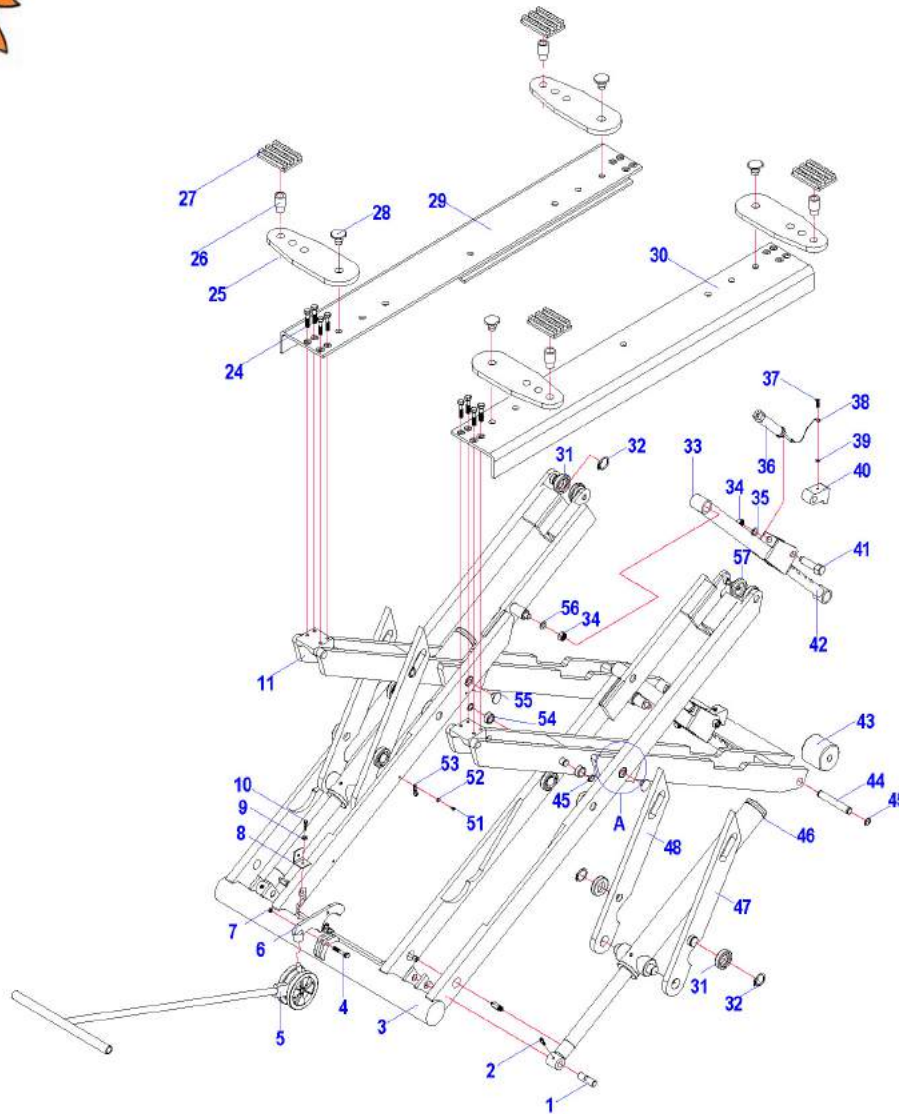
PARTS



MOHAWK RESOURCES LTD.



MOHAWK ITEM NO. USL-6000-K



Spare Parts List

Item	Description	QTY
1	Pin	2
2	Screw	2
3	Lifting arm assy 1	1

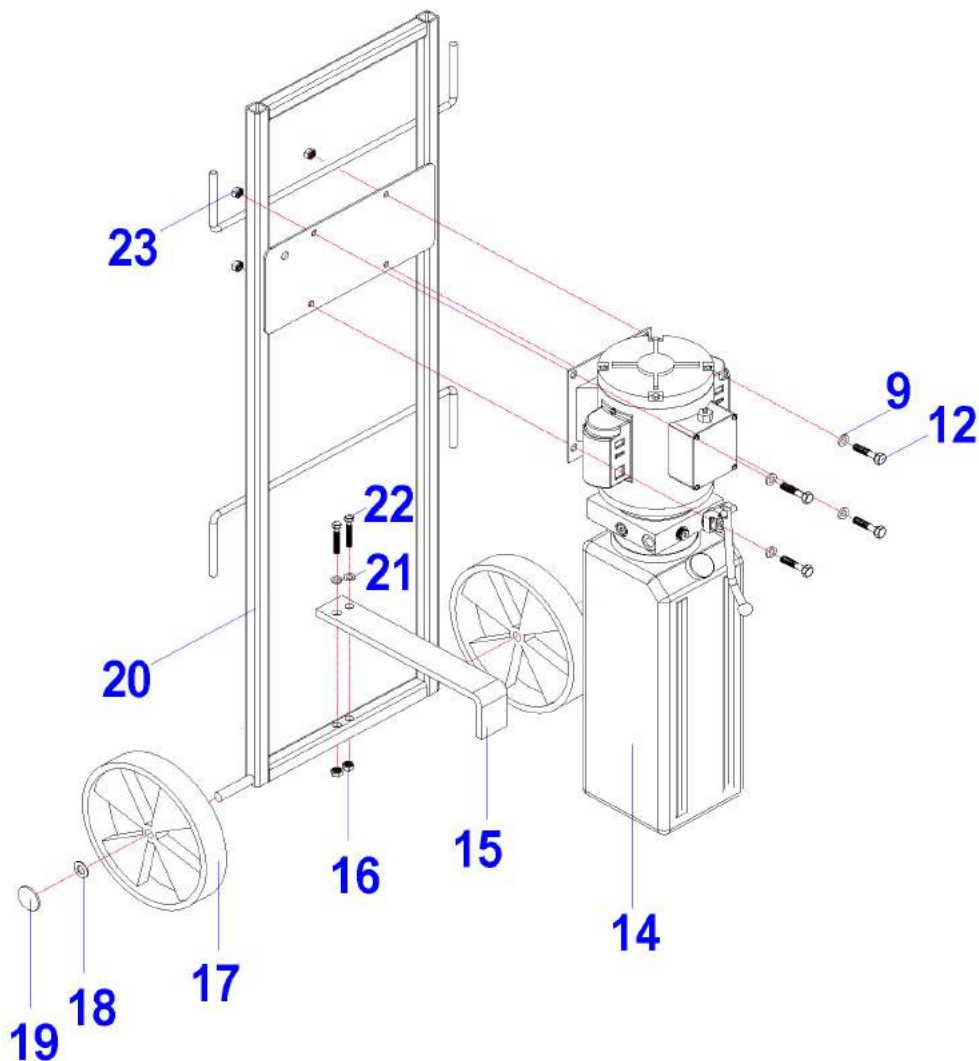
Item	Description	QTY
4	Hex bolt	1
5	Dolly	1
6	Drag plate for dolly	1

Item	Description	QTY
7	Nut	1
8	Support	1
9	Flat washer	5
10	Hex bolt	1
11	Lifting arm assy 2	1
24	Hex bolt	8
25	Swing arm	4
26	Height extension	4
27	Saddle assy	4
28	Screw	4
29	Left platform assy	1
30	Right platform assy	1
31	Wheel assy	10
32	Elastic washer	10

Item	Description	QTY
33	Extension pole assy	2
34	Nut	6
35	Flat washer	2
36	Air cylinder	2
37	Hex bolt	2
38	Steel cable assy	2
39	Flat washer	2
40	Safety bar	2
41	Hex bolt	2
42	Rack teeth assy	2
43	Wheel assy	2
44	Wheel spindle	2
45	Elastic washer	8
46	Hydraulic cylinder assy	2
47	Right support stand assy	2
48	Left support stand assy	2
49	Flat washer	4
50	Spindle	4
51	Screw	6
52	Flat washer	6
53	C clip	6
54	Wheel assy	4
55	Fixed screw	4
56	Flat washer	4
57	Wheel assy	2



MOHAWK ITEM NO. USL-6000-K

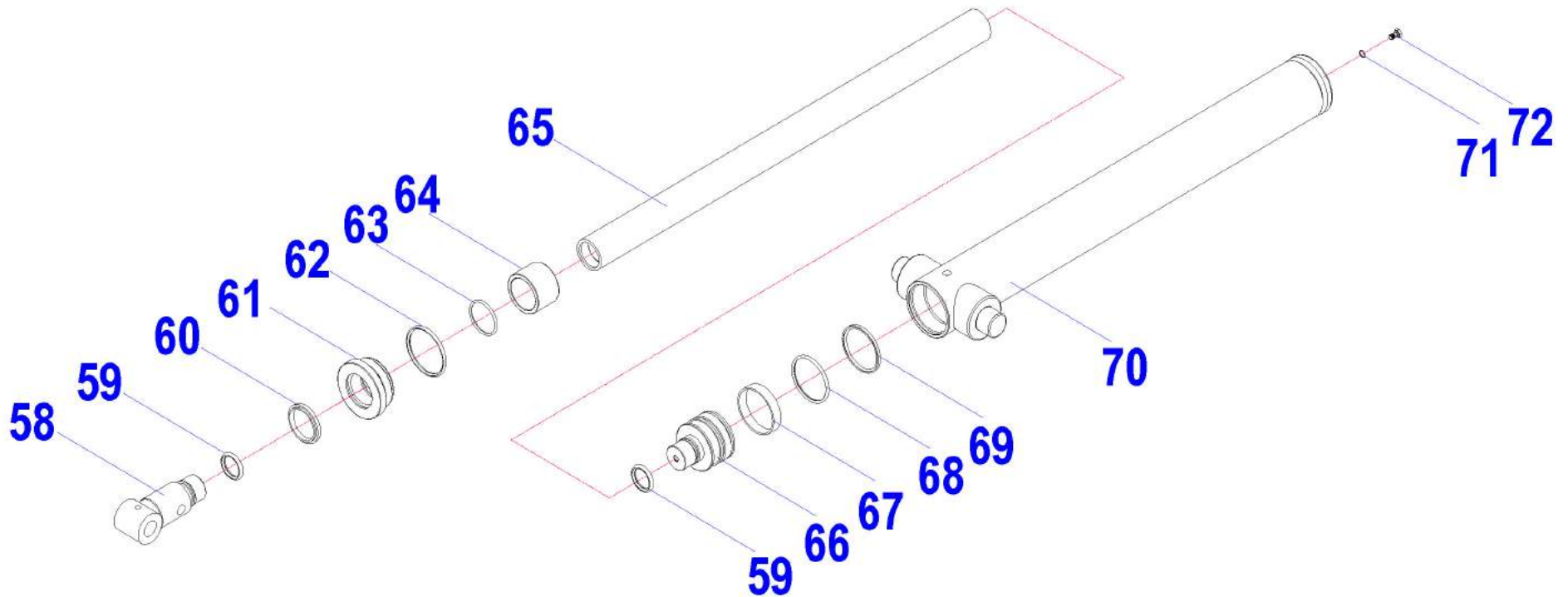


Spare Parts List

Item	Description	QTY
^9	Flat washer	5
^12	Hex bolt	4
^14	Hydraulic pump assy	1
15	Prop bar	1
16	Nut	2
17	Wheel	2
18	Flat washer	2
19	Cover	2
20	Fixed bracket	1
21	Flat washer	2
22	Hex bolt	2
^23	Nut	4



MOHAWK ITEM NO. USL-6000-K



Spare Parts List

Item	Description	QTY
58	Fixed part for piston	1
59	O-ring	2
60	Dustring	1
61	Guide ring	1

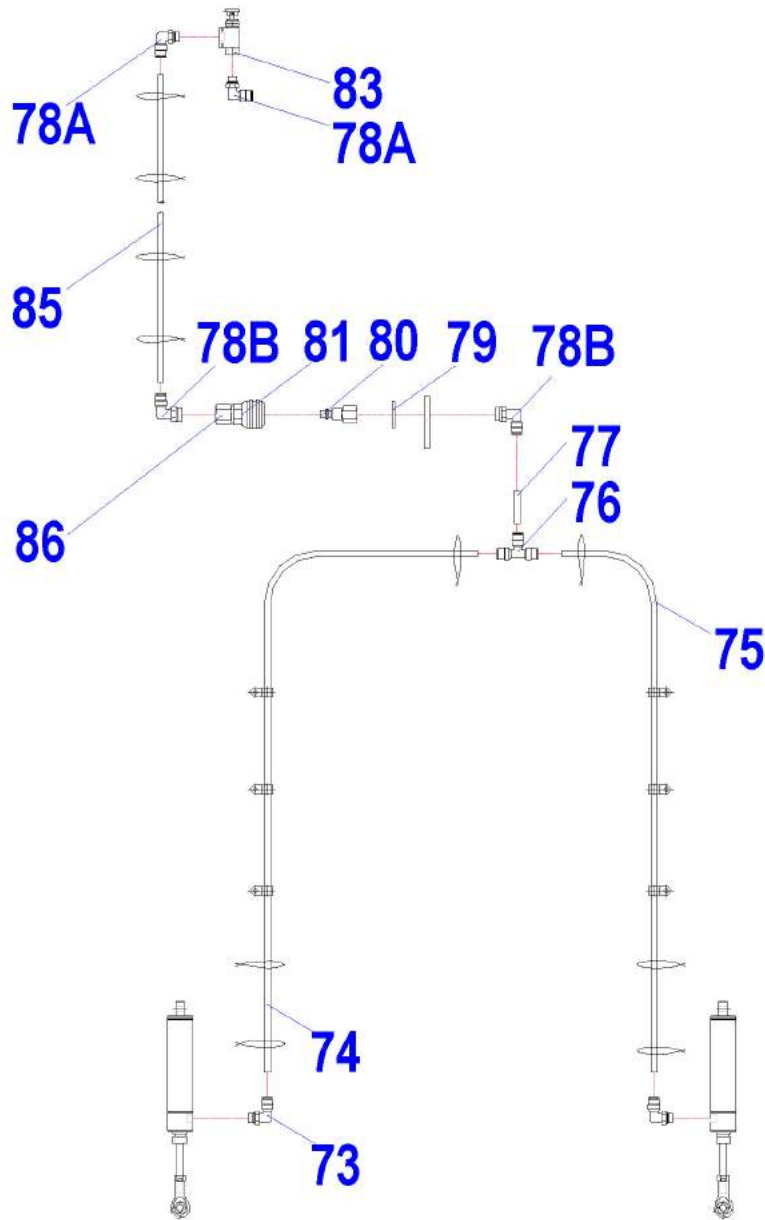
Item	Description	QTY
62	O-ring	1
63	O-ring	1
64	Limit ring	1
65	Piston pole	1

Item	Description	QTY
66	Piston head	1
67	Guide ring	1
68	O-ring	1
69	Seal kit	1

Item	Description	QTY
70	Hydraulic cylinder jointing	1
71	O-ring	1
72	Hex bolt	1



MOHAWK ITEM NO. USL-6000-K

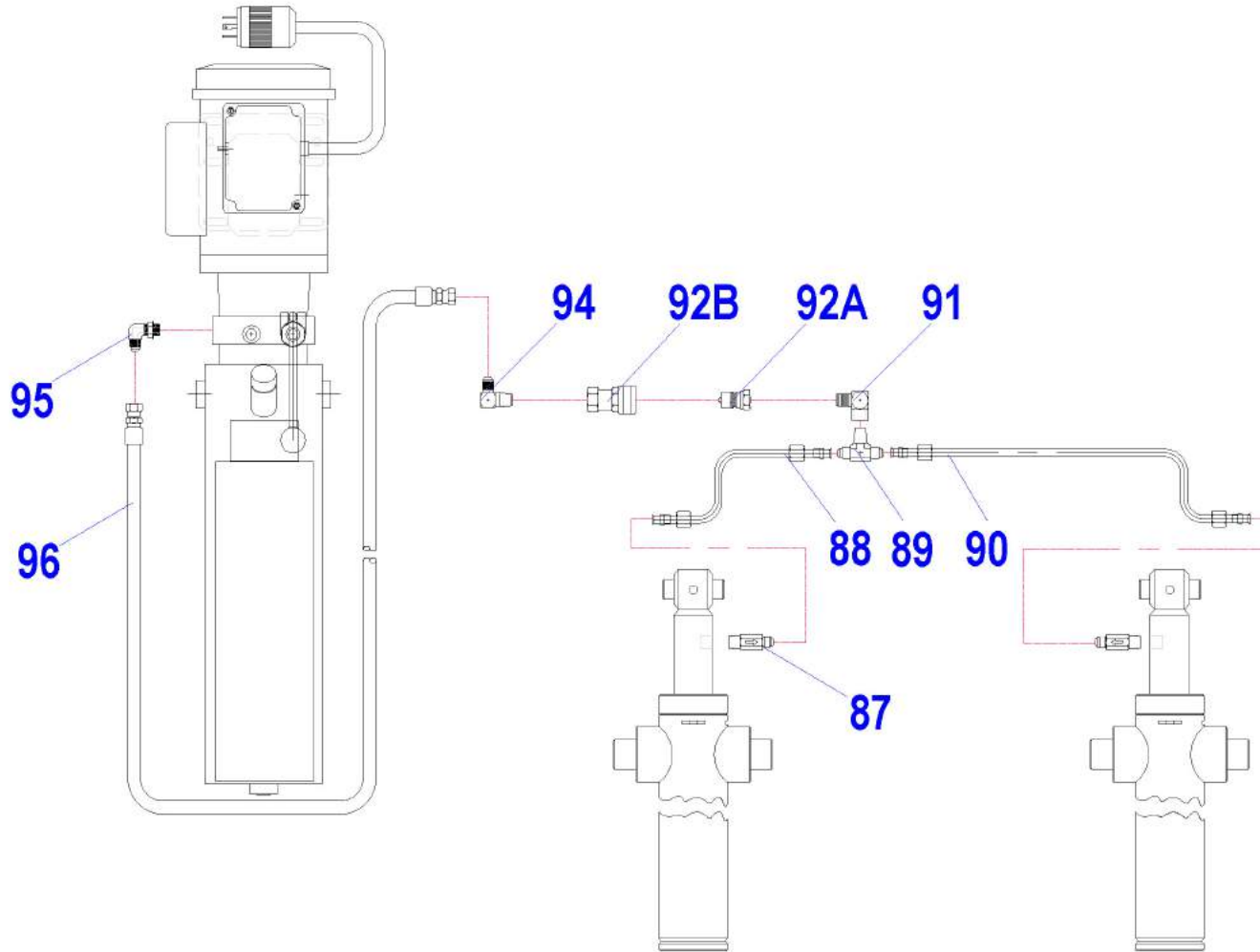


Spare Parts List

Item	Description	QTY
73	Air direct fitting	1
74	Air hose 2	1
75	Air hose 1	1
76	Air T fitting	1
77	Air hose 3	1
^78A	Air direct fitting	2
78B	Air direct fitting	2
79	Nylon washer	1
80	Connector fitting	1
81	Air fitting	1
^83	Valve	1
^85	Air hose 4	1
86	Connector fitting	1



MOHAWK ITEM NO. USL-6000-K



Spare Parts List

Item	Description	QTY
87	Safety valve assy	2
88	Oil hose assy 2	1
89	Oil T fitting	1
90	Oil hose assy 1	1
91	Connector fitting	1
92A	Oil fitting A	1
92B	Oil fitting B	1
94	Direct air fitting	1
^95	Direct oil fitting	1
^96	Soft oil hose	1

Page	Item	Mohawk P/N	Ref P/N	Part Description	Format
1	1	006-030-101	Ref 006-010-163	Cylinder Retainer Pin	
1	2	006-030-102	N/D	Screw	M8 x 8
1	3	006-030-103	Ref 006-010-010	Lift Arm Assy (Main Frame)	
1	4	006-030-104	N/D	Hex bolt	M12 x 50
1	5	006-030-105	---	Dolly Assy (Tow Bar Assy)	
1	6	006-030-106	Ref 006-010-040	Drag Plate for Dolly (Tow Support Weldment)	
1	7	006-030-107	N/D	Nut	M12
1	8	006-030-108	Ref 007-007-140	Support Angle for Fittings	
1	9	006-030-109	N/D	Flat washer	M8
1	10	006-030-110	N/D	Hex bolt	M8 x 10
1	11	006-030-111	---	Lift Arm Assy2	
1	24	006-030-112	N/D	Hex bolt	M12 x 30 (Grd 10.9)
1	25	006-030-113	Ref 006-010-155	Swing Arm (Pivot Pad)	
1	26	006-030-114	---	Height Extension	
1	27	006-030-115	Ref 006-010-054	Saddle Assy (Lift Pad)	
1	28	006-030-116	Ref KI Dwg	Screw (Pivot Pad Pin)	
1	29	006-030-117	Ref 006-010-017	Left Platform Assy	
1	30	006-030-118	Ref 006-010-018	Right Platform Assy	
1	31	006-030-119	Ref KI Dwg	3" Wheel Assy (Under Platform & Along Tear Drops)	
1	32	006-030-120	N/D	Snap Ring	M38
1	33	006-030-121	Ref 006-010-024	Extension Pole Assy (Lock Sleeve Assy)	
1	34	006-030-122	N/D	Nut	M20
1	35	006-030-123	N/D	Flat washer	M20
1	36	006-030-124	N/D	Air cylinder	M25 dia x M38 stroke
1	37	006-030-125	N/D	Hex bolt	M6 x 12
1	38	006-030-126	Ref KI Dwg	Steel Cable Assy (Lock Release Cable)	
1	39	006-030-127	N/D	Flat washer	M6
1	40	006-030-128	Ref 006-010-134	Safety Bar (Lock Body)	
1	41	006-030-129	N/D	Hex bolt	M20 x 1.5
1	42	006-030-130	Ref 006-010-025	Rack Teeth Assy (Lock Rack Bar)	
1	43	006-030-131	Ref KI Dwg	Wheel Assy (Floor Roller Assy)	
1	44	006-030-132	Ref 006-010-123	Wheel Spindle (Floor Roller Axle)	
1	45	006-030-133	N/D	Snap Ring	M25
1	46	006-030-134	---	Hydraulic Cylinder Assy	
1	47	006-030-135	Ref 006-010-015	Right Support Stand Assy	
1	48	006-030-136	Ref 006-010-016	Left Support Stand Assy	
1	49	006-030-137	N/D	Flat washer	M63.5 od x M38.5 id x M3 thk
1	50	006-030-138	Ref KI Dwg	Spindle (Main Pivot Pin Half #1)	
1	51	006-030-139	N/D	Screw	M4 x 8
1	52	006-030-140	N/D	Flat washer	M4
1	53	006-030-141	N/D	C clamp	M4
1	54	006-030-142	Ref KI Dwg	Wheel Assy (Tear Drop Bearing Assy)	
1	55	006-030-143	Ref KI Dwg	Fixed Screw (Main Pivot Pin Half #2)	
1	56	006-030-144	N/D	Flat washer	M50 od x M21 id x M1.5 thk
1	57	006-030-145	Ref KI Dwg	Wheel Assy (Platform Rail Roller)	
2	9	---	600-710-003	Flat Washer	5/16
2	12	---	600-640-001	Hex Bolt	5/16-18 NC x 1" Lg
2	14	---	601-300-097	Hydraulic Pump Assy (PU Assy)	
2	15	006-030-146	Ref 006-010-151	Prop Bar (PU Stand Support)	
2	16	006-030-147	N/D	Nut	M10
2	17	006-030-148	N/D	Cart Wheel	6" x 1.5"
2	18	006-030-149	N/D	Flat washer	M12
2	19	006-030-150	N/D	Wheel Axle Cap	M12

2	20	006-030-151	---	Fixed Bracket (PU Stand Weldment)	
2	21	006-030-152	N/D	Flat washer	M10
2	22	006-030-153	N/D	Hex bolt	M10 x 55
2	23	---	600-690-001	Nut, Lock	5/16-18 NC
3	58	006-030-154	Ref KI Dwg	Fixed Part for Piston (Rod End)	
3	59	006-030-155	N/D	O-ring	M34.5 dia x M3.55 thk
3	60	006-030-156	N/D	Dustring	M62 od x M50 id x M5 thk
3	61	006-030-157	N/D	Guide ring	M90 dia x M37 lg
3	62	006-030-158	N/D	O-ring	M70 dia x M5 thk
3	63	006-030-159	N/D	O-ring	M50 dia x M3.55 thk
3	64	006-030-160	Ref KI Dwg	Limit Ring	
3	65	006-030-161	Ref KI Dwg	Piston Pole (Cylinder Rod)	
3	66	006-030-162	Ref KI Dwg	Piston Head (Piston Body)	
3	67	006-030-163	N/D	Guide ring	M14.5 dia x M2.5 thk
3	68	006-030-164	N/D	O-ring	M68 dia x M4 thk
3	69	006-030-165	N/D	Seal pack	M75 od x M65 id x M4 thk
3	70	006-030-166	---	Hydraulic Cylinder Jointing (Cylinder Barrel Weldment with Trunion)	
3	71	006-030-167	N/D	O-ring	M10 dia x 2.65 thk
3	72	006-030-168	N/D	Hex bolt	M10 x 16
4	73	006-030-169	N/D	Air direct fitting	for 6 mm dia tubing
4	74	006-030-170	N/D	Air hose 2	6 mm dia tubing
4	75	006-030-171	N/D	Air hose 1	6 mm dia tubing
4	76	006-030-172	N/D	Air T fitting	for 6 mm dia tubing
4	77	006-030-173	N/D	Air hose 3	6 mm dia tubing
4	78A	---	601-520-002	Air hose fitting, 90 Deg	1/4" dia tubing to 1/8 NPTM
4	78B	006-030-174	N/D	Air direct fitting, 90 Deg	for 6 mm dia tubing
4	79	006-030-175	N/D	Nylon washer	M17 od x M14 id x M2 thk
4	80	006-030-176	N/D	Connector fitting	R1/4" x Rc1/8"
4	81	006-030-177	N/D	Air fitting	1/4"
4	83	---	601-520-004	Air Valve	Poppet, 3-Way
4	85	---	006-010-432	Air hose 4	1/4" x 19.5 feet
4	86	006-030-178	N/D	Connector fitting	Rc1/4" x Rc1/8"
5	87	---	601-410-046	Safety Valve Assy (Velocity Fuse, 4 GPM)	
5	88	---	006-010-044	Oil Hose Assy 2 (Tubing Assy)	
5	89	006-030-179	N/D	Fitting, Tee	3/8"-18 NPTM x -6 JICM x -6 JICM
5	90	---	006-010-045	Oil Hose Assy 1 (Tubing Assy)	
5	91	006-030-180	N/D	Fitting, 90 Deg	3/8"-18 NPTM x 3/8"-18 NPTF
5	92A	006-030-181	N/D	Oil fitting A, Quick Connect Male	3/8"-18 NPTF
5	92B	006-030-182	N/D	Oil fitting B, Quick Connect Female	3/8"-18 NPTF
5	94	006-030-183	N/D	Fitting, 90 Deg	3/8"-18NPTM x -6 JICM
5	95	---	601-420-017	Fitting, 90 Deg	#6 ORBM to #6 JICM
5	96	---	006-010-046	Hose Assy	1/4" ID x 18 Feet Long
x	x	---	025-002-126	Height Adapter Bracket	
x	x	---	601-620-031	Rubber Block	1" thk x 4" x 4"
x	x	006-030-184	Ref ZZ863	Pin for Support Arm w/ Snap Ring (Replaces 006-010-126)	

MOHAWK

MODEL USL-6000-K

TOW BAR KIT



MOHAWK RESOURCES LTD.

RELOCATION PROCEDURE (USING TOW BAR KIT)

WARNING

- THE UNIT WILL BE RAISED OFF THE BAY FLOOR. EVERY EFFORT SHOULD BE MADE TO KEEP FEET AND ARMS FROM BENEATH THE UNIT AND AWAY FROM PINCH POINTS.

NOTE

- THE USL-6000-K CANNOT BE RELOCATED/MOVED WITH A VEHICLE ON THE UNIT.
- IT IS ADVISED TO SWEEP THE FLOOR TO REMOVE ALL DEBRIS. DUE TO THE WEIGHT OF THE UNIT, SMALL STONES, NUTS, BOLTS, ETC., CAN MAKE MOVING THE UNIT TROUBLESOME IF NOT REMOVED.

- REMOVE THE VEHICLE FROM THE UNIT.
- PLACE LIFT ACCESSORIES INTO THEIR PROPER PLACE.
- RAISE UNIT APPROXIMATELY 2 FEET AND LOWER ONTO FIRST LOCK POSITION. CONTINUE TO PULL DOWN HANDLE FOR A FEW SECONDS AFTER THE LIFT HAS SETTLED INTO THE LOCK POSITION TO REMOVE PRESSURE FROM HYDRAULIC SYSTEM. ALTERNATIVELY, THE LIFT CAN BE MOVED WHEN FULLY LOWERED IF THE FLOOR IS LEVEL ENOUGH TO PROVIDE PROPER ROLLING OF LIFT.
- DISCONNECT HYDRAULIC AND PNEUMATIC COUPLINGS BETWEEN POWER UNIT AND LIFT. **SEE HYDRAULIC & PNEUMATIC TUBING AND FITTING LISTS (PG 2-3 & 2-4)**

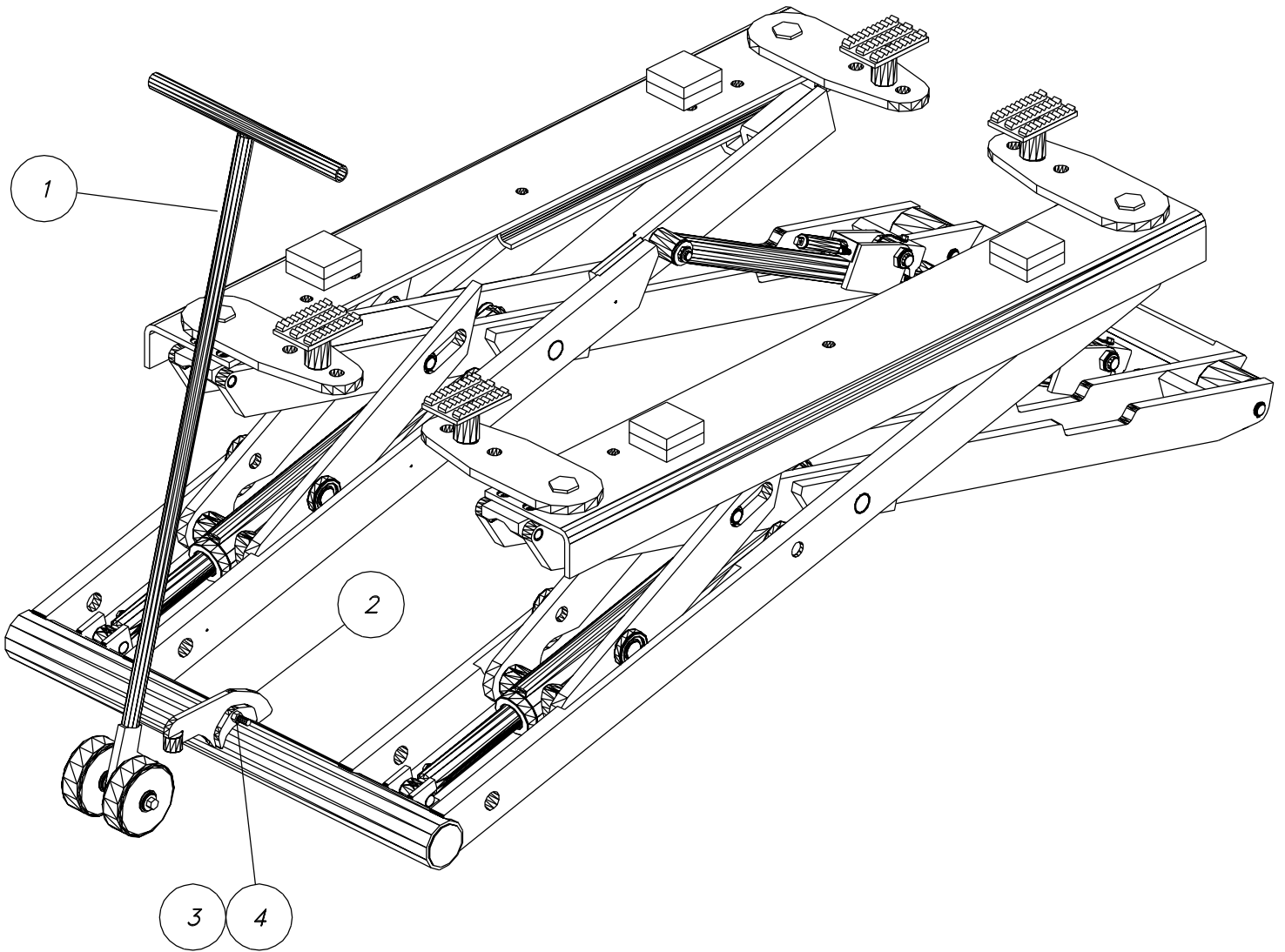
-- WARNING: --

DO NOT DISCONNECT HYDRAULIC COUPLINGS BETWEEN POWER UNIT AND LIFT UNTIL LIFT IS FULLY LOWERED ONTO A LOCK POSITION AND THERE IS NO HYDRAULIC PRESSURE IN THE SYSTEM. FAILURE TO DO SO CAN RESULT IN A PRESSURE RELEASE OF HYDRAULIC FLUID AND POSSIBLE INJURY.

- ASSEMBLE THE TOW BAR AND TOW BAR SUPPORT TO THE FRONT OF THE UNIT USING THE 1/2 IN BOLT AND NUT. **SEE TOW BAR SETUP POSITION (PG 4-2)**
- PULL DOWN ON TOW BAR TO A 30 DEGREE ANGLE TO LIFT FRONT OF UNIT. **SEE TOW BAR PULLING POSITION (PG 4-3)**
- PULL THE UNIT TO THE DESIRED LOCATION.
- REMOVE THE TOW BAR AND TOW BAR SUPPORT AND STORE IN AN APPROPRIATE LOCATION.

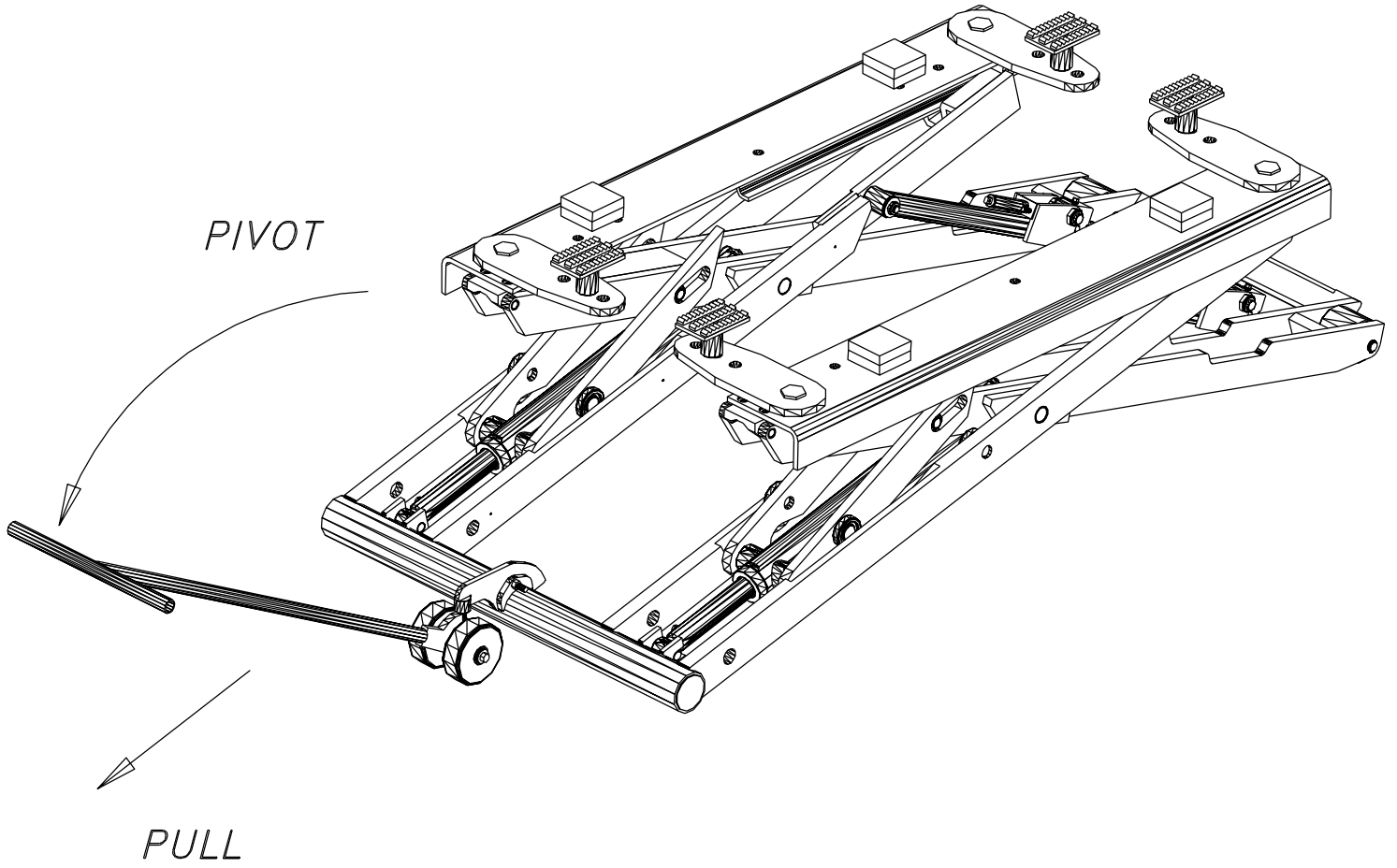
-- WARNING: --

ALWAYS REMOVE TOW BAR SUPPORT WELDMENT FROM LIFT BEFORE LIFTING VEHICLES. FAILURE TO DO SO CAN RESULT IN DAMAGE TO THE LIFT OR FLOOR, AND AN UNSTABLE AND POTENTIALLY DANGEROUS LIFTING CONDITION.

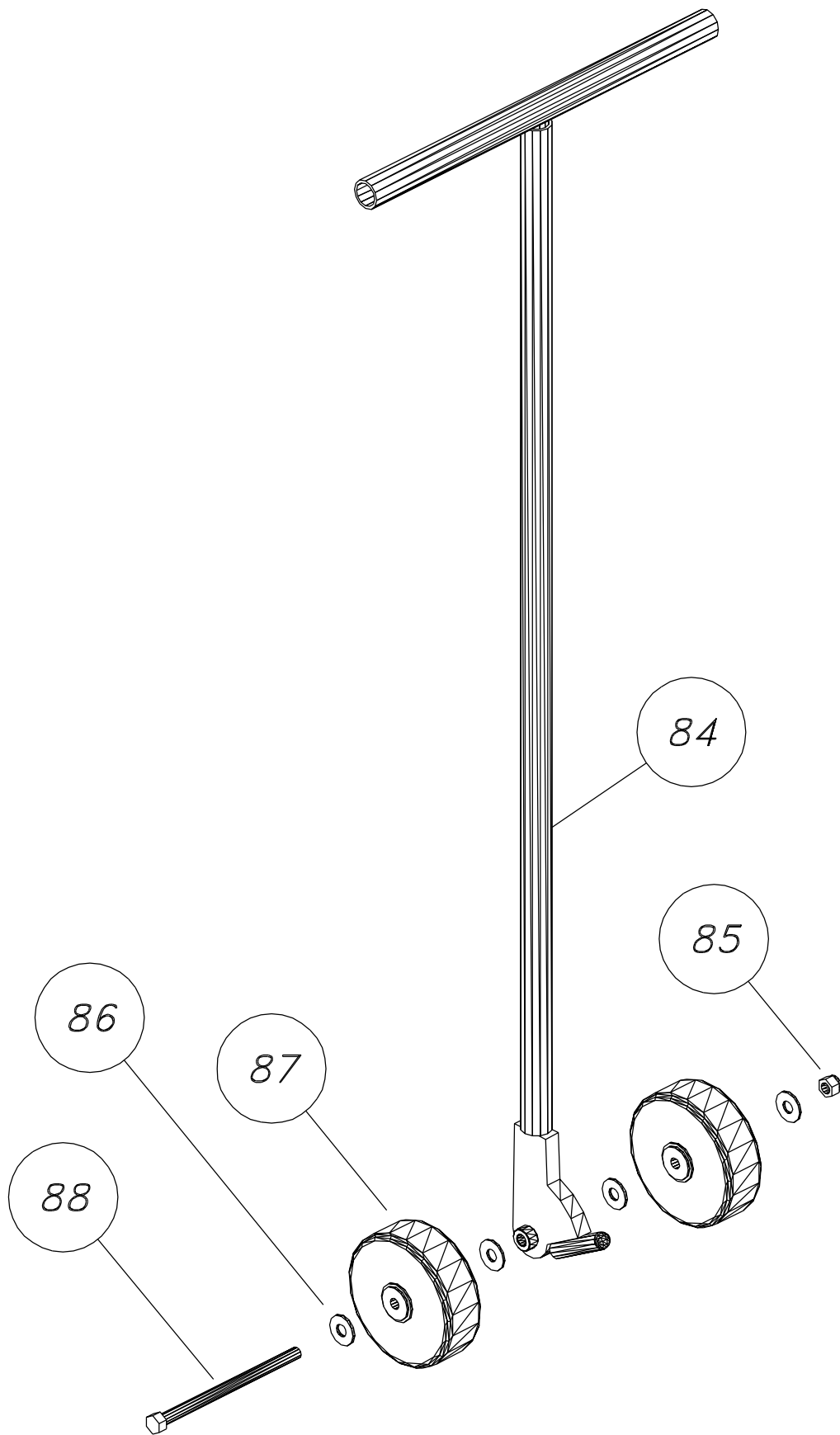


TOW BAR SETUP POSITION

4-2



TOW BAR PULLING POSITION



TOW BAR ASSEMBLY

TOW BAR KIT PARTS LIST

FILE: USL-PL2.WB1

REV: 4/24/98

PURCH

ITEM	PART NO.	DESCRIPTION	QTY	ITEM #
80	006-010-042	TOW BAR ASSEMBLY	1	
81	006-010-040	TOW BAR SUPPORT WELDMENT	1	
82	600-640-054	BOLT, 1/2-13 NC x 2 1/2 LG, HEX HEAD	1	
83	600-680-001	NUT, PLAIN, 1/2-13 NC	1	
84	006-010-041	TOW BAR WELDMENT	1	
85	600-690-009	NUT, LOCK, 1/2-13 NC, GRADE 5	1	153
86	600-710-008	WASHER, FLAT, 1/2	4	316
87	600-920-002	WHEEL, HEAVY DUTY, 6"	2	962
88	600-640-063	BOLT, 1/2-13 NC x 8" LG, HEX HEAD CAP	1	