

MODEL

40

SERVICE JACK



Maintenance Guide

Parts List

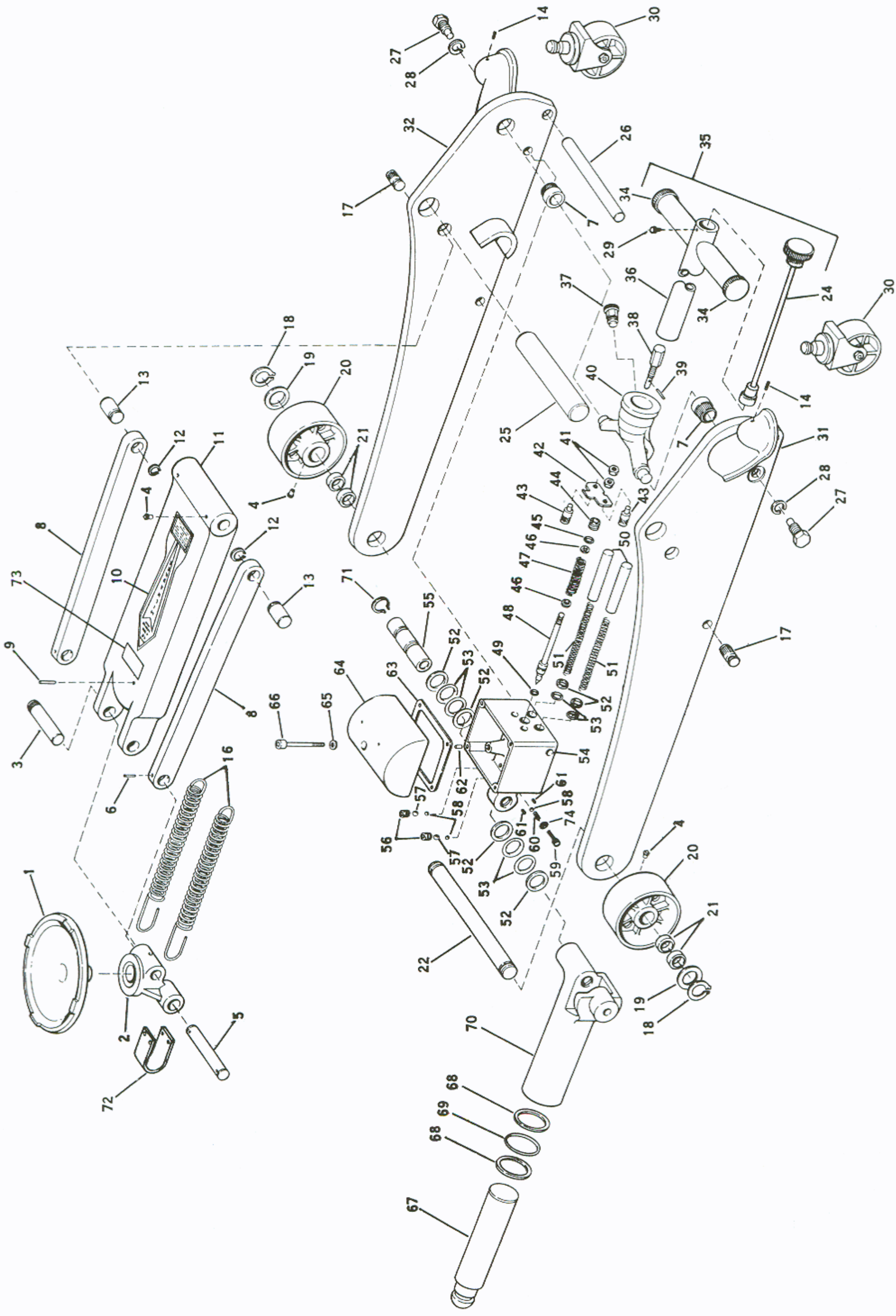
Operating Instructions

Warranty Information



Milwaukee

HYDRAULIC PRODUCTS CORPORATION
MILWAUKEE, WISCONSIN U.S.A.



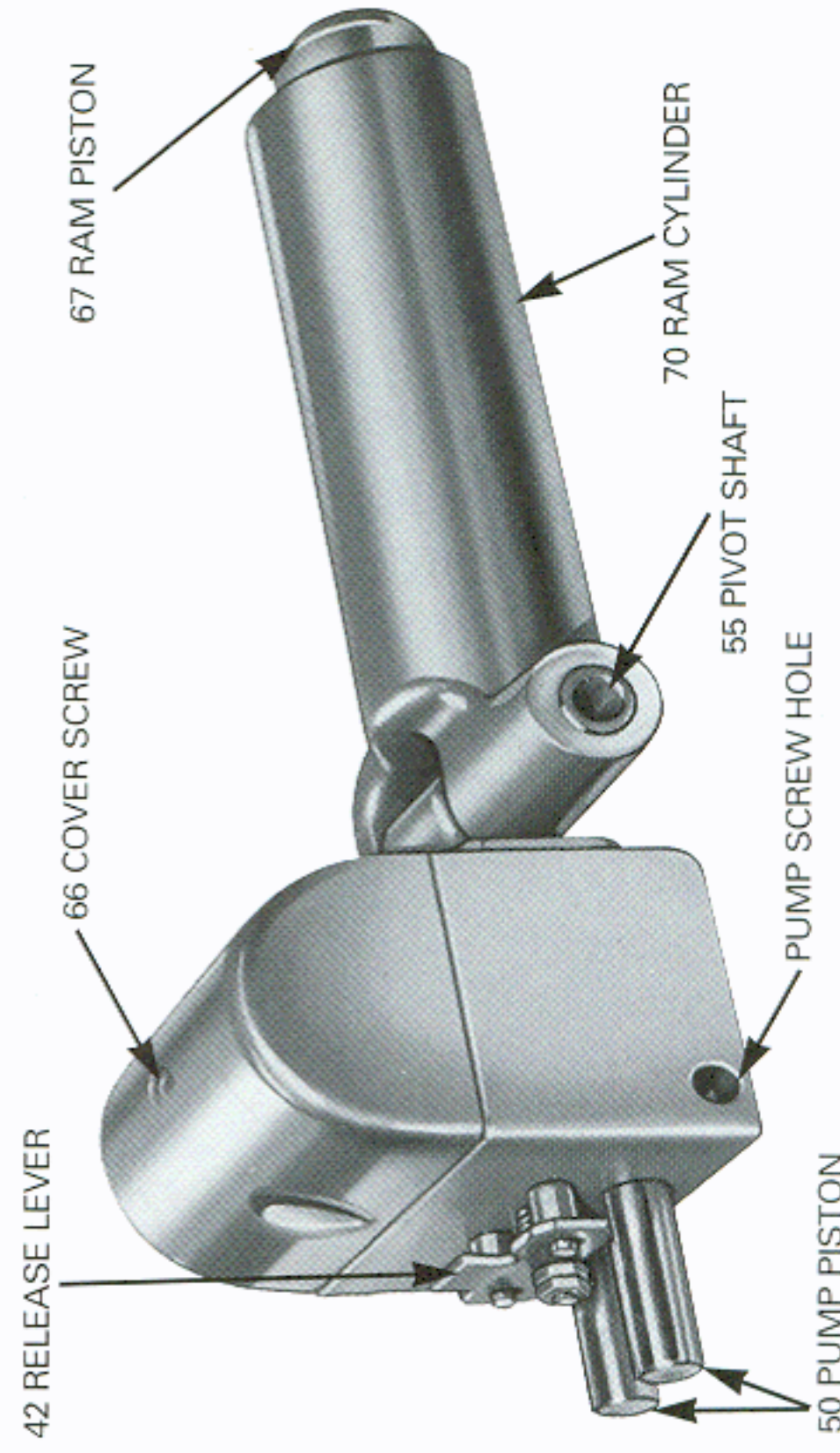
Milwaukee MODEL 40 PARTS

MODEL 40 PARTS LIST

MODEL 40 OPERATING INSTRUCTIONS

1. TO RAISE JACK - Turn HANDLE (35) in a clockwise direction until it stops. Pump handle to raise.
2. TO LOWER JACK - Turn HANDLE (35) in a counter-clockwise direction. Speed of descent can be accurately controlled by the degree handle is turned.
3. TO REMOVE HANDLE - Pull out LOCK BUTTON (37) located on HANDLE LEVER (40). Pull out HANDLE (35).
4. TO REPLACE HANDLE - Insert HANDLE (35) into HANDLE LEVER (40) socket. LOCK BUTTON (37) automatically engages with handle to lock handle in place.
5. **DANGER** - DO NOT get under the vehicle unless it is supported by jack stands. Failure to do so may result in INJURY OR DEATH.

HYDRAULIC EXCHANGE UNIT NO. 4100



Ref. No.	Part No.	Description	No. Req'd.	Ref. No.	Part No.	Description	No. Req'd.
1	4011	Saddle	1	37	4191	Lock Button Assembly	1
2	4004	Saddle Support	1	38	2637	Release Screw	1
3	2228	Saddle Shaft	1	39	2638	Release Pin	1
4	4054	Grease Fitting	4	40	4009	Handle Lever	1
5	4015	Bar Shaft	1	41	2283	Release Nut 1/4"-20	2
6	4069	Roll Pin 5/32 x 1-1/4"	2	42	4076	Release Lever	1
7	4022	Bearing	2	43	2684	Release Stud	2
8	4033	Level Bar	2	44	2681	Tension Screw	1
9	4077	Roll Pin 1/4 x 1-1/2"	1	45*	2279	O-Ring 1/4"	1
10	4073	Decal	1	46	2698	Washer 1/4"	2
11	4003	Lifting Arm	1	47	2678	Release Spring	1
12	2217	Snap Ring 3/4"	2	48	2676	Release Needle	1
13	4023	Bar Stud	2	49*	2675	O-Ring 3/16"	1
14	2212	Set Screw	2	50	4018	Pump Piston	2
16	2631	Saddle Spring	2	51	4042	Piston Spring	2
17	2609	Spring Stud	2	52*	2247	Back Up Washer 3/4"	6
18	4063	Snap Ring 1-1/8"	2	53*	2246	O-Ring 3/4"	6
19	4062	Washer 1-1/8"	2	54	4007	Pump Body	1
20	4010	Wheel	2	55	4017	Pivot Shaft	1
21	4066	Needle Bearing	4	56	2663	Plug 1/4"	2
22	4026	Front Axle	1	57*	2270	Ball 3/8"	2
24	4085	Release Rod Assembly	1	58*	2269	Ball 1/4"	3
25	4025	Anchor Shaft	1	59	4058	Cap Screw	1
26	4019	Piston Stop	1	60	4059	By-Pass Spring	1
27	2689	Pump Screw	2	61	2261	Plug 1/16"	3
28	2257	Lock Washer 1/2"	2	62	2664	Cover Pin	4
29	4048	Cap Screw	1	63*	4040	Cover Gasket	1
30	4034	Caster Wheel	2	64	4008	Pump Cover	1
31	4129	Left Hand Frame Assembly (includes items 7, 13 and 17)	1	65	4047	Copper Washer	1
32	4128	Right Hand Frame Assembly (includes items 7, 13 and 17)	1	66	4046	Cover Screw	1
34	2694	Handle Knob	1	67	4006	Ram Piston	1
35	4180	Handle - Complete (consists of items (24, 29, 34 and 36)	2	68*	4038	Back Up Washer 2-1/2"	2
				69*	4035	O-Ring 2-1/2"	1
				70	4005	Ram Cylinder	1
				71	4065	Snap Ring 3/4"	1
				72*	2230	Spring Clip	1
				73*	1121	Safety Decal	1
36	4190	Handle Weld. Assembly	1		M40KT	Repair Kit	1
					1527	Copper Washer	1

*Contained in Repair Kit

Milwaukee

MODEL 40 SERVICE JACKS

MAINTENANCE INSTRUCTIONS

1. LUBRICATION: We recommend periodic packing of the HANDLE LEVER (40) socket with grease to protect the RELEASE SCREW (38). Use SAE 30 Oil to lubricate FRONT WHEELS (20), ANCHOR SHAFT (25), LEVEL BAR (8) bearings and LOCK BUTTON (37).
2. HOW TO ADD HYDRAULIC OIL: The need for additional hydraulic oil is indicated when jack does not raise to its full height. To add, lower jack fully and close release. Thoroughly clean off the top of PUMP COVER (64) around COVER SCREW (66). Oil container and funnel should also be thoroughly cleaned. Remove COVER SCREW (66) and COPPER WASHER (65). Pour clean hydraulic jack oil into reservoir until oil reaches top of hole. Replace COVER SCREW (66) and COPPER WASHER (65) and tighten securely to seal. CAUTION: Do not use hydraulic brake fluid; it gums seals and check valves.
3. HOW TO REMOVE HYDRAULIC UNIT NO. 4100: Open release and lower jack fully. Close release. Remove ROLL PIN (9) by driving it completely through LIFTING ARM (11). Remove two PUMP SCREWS (27) and LOCK WASHERS (28) located on FRAME PLATES (31) and (32) under caster bracket. Place jack on side and unhook SADDLE SPRINGS (16) from SPRING STUDS (17) only. Swing Lifting Arm out to top position. Swing PUMP BODY (54) out through bottom of Side Plates and push RAM CYLINDER (70) out of pivot sockets.
4. HOW TO REPLACE HYDRAULIC UNIT NO. 4100: Place jack on side. Swing LIFTING ARM (11) out to top position. Insert #4100 Hydraulic Unit through the bottom of FRAME PLATES (31) and (32) with PUMP BODY (54) swung slightly downward so that on entering, the RAM CYLINDER (70) trunnions engage with the sockets in the Frame Plates. Swing Pump Body into position so that PUMP PISTONS (50) contact PISTON STOP (26). Replace PUMP SCREWS (27) and LOCK WASHERS (28). Swing Ram Cylinder toward Lifting Arm and engage RAM PISTON (67) head with socket in Lifting Arm by swinging Lifting Arm back to lowest position. Hook SADDLE SPRINGS (16) to SPRING STUDS (17). Place jack right side up on its wheels. Drive ROLL PIN (9) into Lifting Arm flush with top surface.

SERVICE FACILITIES

While your MILWAUKEE Model 40 Service Jack is designed and constructed to render long and dependable service, it may eventually require attention. Service is available through your Authorized Service Depot, your Local Distributor, or the Factory. It is recommended that you do not tamper with the internal mechanism of this Jack. Unwarranted damage may result. Factory tested Hydraulic Exchange Units are readily available, economical to exchange and simple to install.

WARRANTY

Milwaukee Hydraulic Products warrants products purchased hereunder to be free of defects in material and workmanship for a period of one (1) year from date of delivery to user. This warranty shall not apply in the event products are damaged as a result of misuse, abuse, neglect, accident, improper application, modification or repair by persons not authorized by Milwaukee Hydraulic Products, where products are damaged during shipment, or where the serial numbers on the products have been defaced, modified or removed.

Milwaukee Hydraulics Commitment To Customers

To assure our customers receive the highest quality, great care is exercised in the design of our products; skilled personnel maintain exacting specifications throughout manufacturing; and trained inspectors continuously check and test components.

Milwaukee Jacks are Built to Last.

Milwaukee

HYDRAULIC PRODUCTS CORPORATION

MILWAUKEE, WISCONSIN U.S.A.

OFFICE CORRESPONDENCE
P.O. Box 1131
Milwaukee, Wisconsin 53201

PLANT SHIPMENTS
1500 West St. Paul Avenue
Milwaukee, Wisconsin 53233

TELEPHONE
(414) 272-6249

FAX
(414) 272-1558

TOLL FREE PHONE
1-800-547-5225 (JACK)