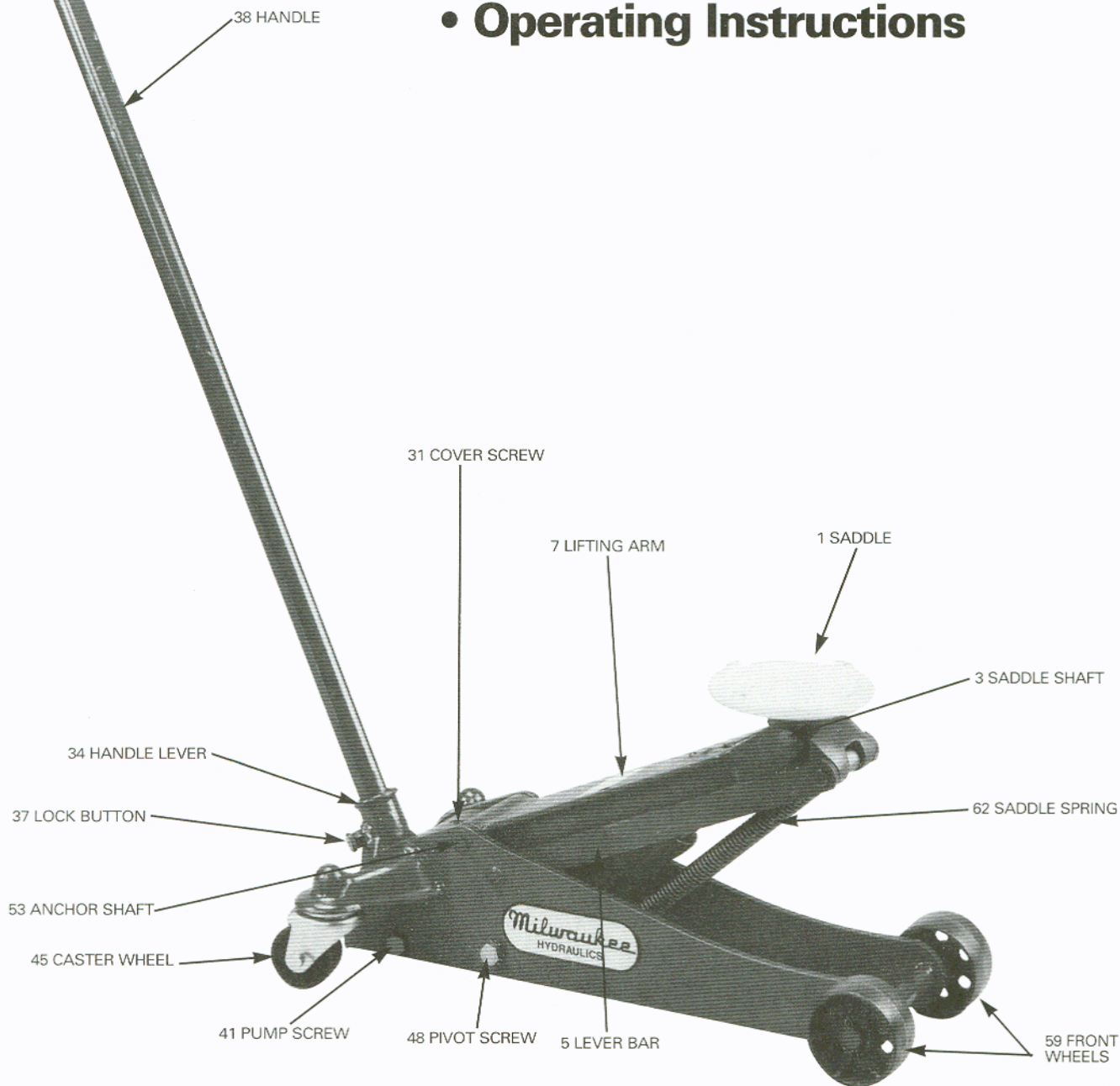


MODEL 20 SERVICE JACK

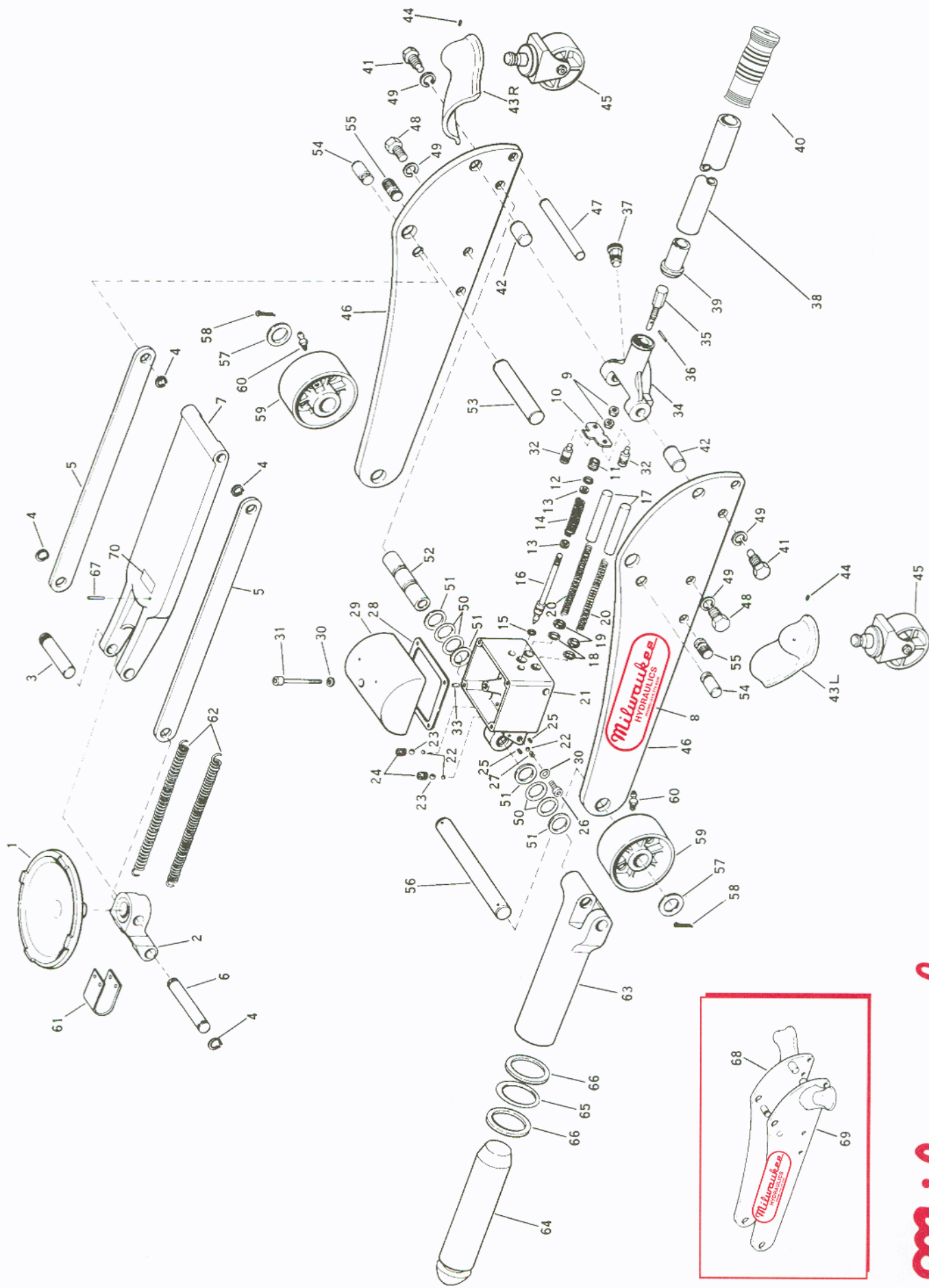
BUILT TO LAST

- Maintenance Guide
- Parts List
- Operating Instructions



Milwaukee

HYDRAULIC PRODUCTS CORPORATION
MILWAUKEE, WISCONSIN U.S.A.



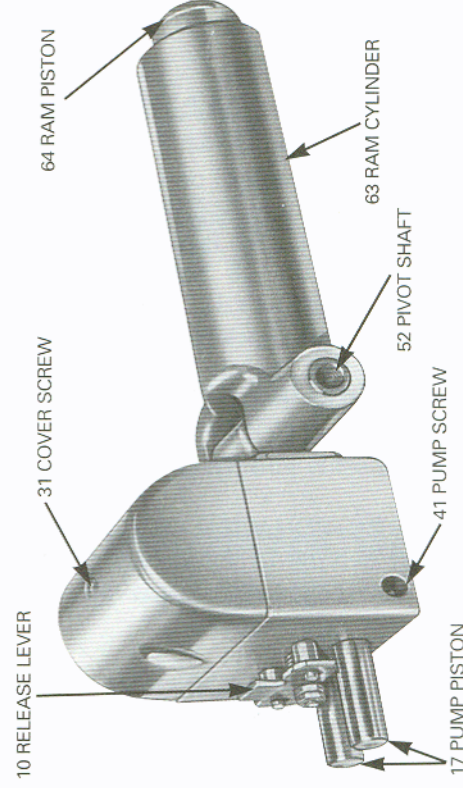
Milwaukee MODEL 20 PARTS

MODEL 20 PARTS LIST

MODEL 20 OPERATING INSTRUCTIONS

1. TO RAISE JACK - Turn HANDLE (38) in a clockwise direction until it stops. Pump handle to raise.
2. TO LOWER JACK - Turn HANDLE (38) in a counter-clockwise direction. Speed of descent can be accurately controlled by the degree handle is turned.
3. TO REMOVE HANDLE - Pull out LOCK BUTTON (37) located on HANDLE LEVER (34). Pull out HANDLE (38).
4. TO REPLACE HANDLE - Insert HANDLE (38) into HANDLE LEVER (34) socket. LOCK BUTTON (37) automatically engages with handle to lock handle in place.
5. **DANGER** - DO NOT get under the vehicle unless it is supported by jack stands. Failure to do so may result in INJURY OR DEATH.

HYDRAULIC EXCHANGE UNIT NO. 2100



Ref. No.	Part No.	Description	No. Req'd.	Ref. No.	Part No.	Description	No. Req'd.
1	2622	Saddle	1	39	2695	Release Driver	1
2	2623	Saddle Bracket	1	40	2691	Handle Grip	1
3	2624	Saddle Shaft	1	41	2689	Pump Screw	2
4	2629	Snap Ring 5/8"	4	42	2608	Lever Stud	2
5	2627	Level Bar	2	43L	2603L	Caster Bracket	1
6	2626	Bar Shaft	1	43R	2603R	Caster Bracket	1
7	2621	Lifting Arm	1	44	2212	Set Screw	2
8	4099	Decal	1	45	2213	Caster Wheel	2
9	2283	Release Nut	2	46	2601	Frame Plate	2
10	4076	Release Lever	1	47	2610	Piston Stop	1
11	2681	Tension Screw	1	48	2690	Pivot Screw	2
12*	2279	O-Ring 1/4"	1	49	2257	Lock Washer	4
13	2698	Washer 1/4"	2	50*	2246	O-Ring 3/4"	4
14	2678	Release Spring	1	51*	2247	Back Up Washer 3/4"	4
15*	2675	O-Ring 3/16"	1	52	2255	Pivot Shaft	1
16	2676	Release Needle	1	53	2625	Anchor Shaft	1
17	2265	Pump Piston	2	54	2607	Bar Stud	2
18*	2267	O-Ring 5/8"	2	55	2609	Spring Stud	2
19*	2268	Washer 5/8"	2	56	2215	Front Axle	1
20	2266	Pump Spring	2	57	2216	Washer 3/4"	2
21	2660	Pump Body	1	58	1593	Cotter Pin	2
22*	2269	Ball 1/4"	3	59	1595	Wheel Assembly (Includes item 60)	2
23*	2270	Ball 3/8"	2	60	1596	Fitting	2
24	2663	Plug 1/4"	2	61	2230	Spring Clip	1
25	2261	Plug 1/16"	2	62	2631	Saddle Spring	2
26	4058	Cap Screw	1	63	2648	Ram Cylinder	1
27	4059	By-Pass Spring	1	64	2649	Ram Piston	1
28*	2686	Cover Gasket	1	65*	2656	O-Ring	1
29	2683	Pump Cover	2	66*	2657	Washer 1-5/8"	2
30*	1527	Copper Washer	1	67	1584	Roll Pin	1
31	2687	Cover Screw	2	68	2128	Right Hand Frame Assembly (consists of items 42, 43, 46 and 54)	1
32	2684	Release Stud	2			Left Hand Frame Assembly (consists of items 42, 43, 46, and 54)	1
33	2664	Cover Pin	4			Safety Decal	1
34	2636	Handle Lever	1				
35	2637	Release Screw	1				
36	2638	Release Pin	1				
37	4191	Lock Button Assembly	1				
38	2190	Handle Assembly (Includes item 39 & 40)	1				

*Contents of M20KT Repair Kit

Please specify the serial number of your service jack, in addition, to the part number to expedite your order.

Milwaukee

MODEL 20 SERVICE JACKS

MAINTENANCE INSTRUCTIONS

1. LUBRICATION: We recommend periodic packing of the HANDLE LEVER (34) socket with grease to protect the RELEASE DRIVER (39) and RELEASE SCREW (35). Use SAE 30 Oil to lubricate FRONT WHEELS (59), ANCHOR SHAFT (53), LEVEL BAR (5) bearings and LOCK BUTTON (37).
2. HOW TO ADD HYDRAULIC OIL: The need for additional hydraulic oil is indicated when jack does not raise to its full height. To add, lower jack fully and close release. Thoroughly clean off the top of PUMP COVER (29) around COVER SCREW (31). Oil container and funnel should also be thoroughly cleaned. Remove COVER SCREW (31) and COPPER WASHER (30). Pour clean hydraulic jack oil into reservoir until oil reaches top of hole. Replace COVER SCREW (31) and COPPER WASHER (30) and tighten securely to seal. CAUTION: Do not use hydraulic brake fluid; it gums seals and check valves.
3. HOW TO REMOVE HYDRAULIC UNIT NO. 2100: Open release and lower jack fully. Close release. Remove ROLL PIN (67) by driving it completely through LIFTING ARM (7). Turn jack upside down. Unlock SADDLE SPRINGS (62) from STUDS (55). Remove two PUMP SCREWS (41) and two PIVOT SCREWS (48). Remove unit from frame.
4. HOW TO REPLACE HYDRAULIC UNIT NO. 2100: Turn jack frame upside down. Place unit into frame making sure that top of RAM PISTON (64) is placed in LIFTING ARM (7) socket. Replace two PIVOT SCREWS (48) and two PUMP SCREWS (41). Connect SADDLE SPRINGS (62) to SPRING CLIP (61) and SPRING STUDS (55). Turn jack right side up. Drive in ROLL PIN (67) flush with surface of LIFTING ARM (7).

SERVICE FACILITIES

While your MILWAUKEE Model 20 Service Jack is designed and constructed to render long and dependable service, it may eventually require attention. Service is available through your Authorized Service Depot, your Local Distributor, or the Factory. It is recommended that you do not tamper with the internal mechanism of this Jack. Unwarranted damage may result. Factory tested Hydraulic Exchange Units are readily available, economical to exchange and simple to install.

WARRANTY

Milwaukee Hydraulic Products warrants products purchased hereunder to be free of defects in material and workmanship for a period of one (1) year from date of delivery to user. This warranty shall not apply in the event products are damaged as a result of misuse, abuse, neglect, accident, improper application, modification or repair by persons not authorized by Milwaukee Hydraulic Products, where products are damaged during shipment, or where the serial numbers on the products have been defaced, modified or removed.

Milwaukee Hydraulics Commitment To Customers

To assure our customers receive the highest quality, great care is exercised in the design of our products; skilled personnel maintain exacting specifications throughout manufacturing; and trained inspectors continuously check and test components.

Milwaukee Jacks are Built to Last.

Milwaukee

HYDRAULIC PRODUCTS CORPORATION

MILWAUKEE, WISCONSIN U.S.A.

OFFICE CORRESPONDENCE
P.O. Box 1131
Milwaukee, Wisconsin 53201

PLANT SHIPMENTS
1500 West St. Paul Avenue
Milwaukee, Wisconsin 53223

TELEPHONE (414) 272-6249
FAX (414) 272-1558

TOLL FREE PHONE
1-800-547-5225