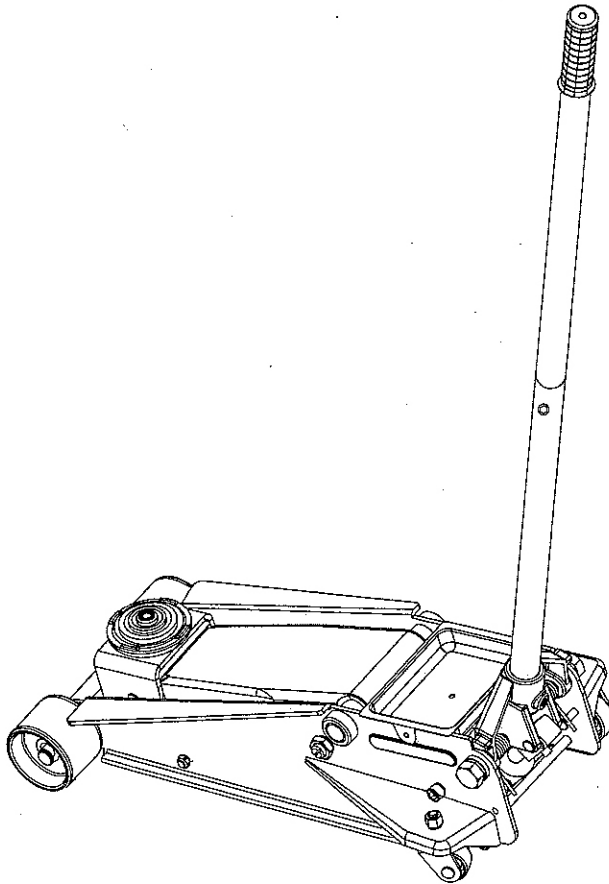




G-735

# Speedy Lift® Hydraulic Jack 3 1/2 ton (7,000 lbs) OWNER'S MANUAL

U.S. PATENTS 6199379B1 5755099 5946912



Michelin and the Tyre Man (Bibendum) are trademarks used with permission from the Michelin Group.

©2006 Michelin

**Save these instructions.** For your safety, read, understand, and follow the information provided with and on this jack. The owner and operator of this equipment shall have an understanding of this jack and safe operating procedures before attempting to use. The owner and operator shall be aware that use and repair of this product may require special skills and knowledge. Instructions and safety information shall be conveyed in the operator's native language before use of this jack is authorized. If any doubt exists as to the safe and proper use of this jack, remove from service immediately. **Inspect before each use.** Do not use if broken, bent, cracked, or damaged parts (including labels) are noted. Any jack that appears damaged in any way, operates abnormally or is missing parts, shall be removed from service immediately. If the jack has been, or suspected to have been subjected to a shock load (a load dropped suddenly, unexpectedly upon it), immediately discontinue use until jack has been checked by a factory authorized service center. It is recommended that an annual inspection be done by qualified personnel. Labels and Owner's Manuals are available from the manufacturer (see Replacement Parts, page 5).

### PRODUCT DESCRIPTION

Michelin SpeedyLift Hydraulic Jacks are designed to lift, but not sustain, rated capacity loads. It is designed to be used in conjunction with jack stands. Michelin SpeedyLift Hydraulic Jack has a unique feature which provides fast, no load lifts to the jacking point. **Intended use:** To lift one wheel or axle of a vehicle for the purpose of service and/or repair of vehicle components. After lifting, loads must be immediately supported by appropriately rated jack stands. Check with vehicle owner's manual for proper lift points.

### BEFORE USE

1. Verify that the product and the application are compatible, if in doubt call the Michelin Consumer Enquiries at 1-877-246-6006.
2. Before using this product, read the owner's manual completely and familiarize yourself thoroughly with the

product, its components and recognize the potential hazards associated with its use.

3. Assemble two-piece handle by aligning holes in upper and lower handle sections. Secure handle halves using the supplied 6 x 38 mm bolt. Insert bolt from the unthreaded hole side of the handle first so that the bolt thread can engage with the threaded hole portion of the handle on the other side. Do not over tighten.
4. Insert assembled handle into handle sleeve of jack. Secure with supplied bolt. Check to ensure that handle cannot be removed from jack. The handle is now directly connected to the release valve mechanism. Open the release valve by turning the handle counterclockwise no more than 1/2 full turn.
5. With saddle fully lowered, locate and remove the oil filler plug, then pump 6 to 8 full strokes. Ensure the oil level is within ~3/16" from the inner cylinder as viewed from the oil filler plug hole. Reinstall the oil filler plug. Close release valve by turning the handle clockwise until firm resistance is felt.
6. Check to ensure that jack rolls freely and that the pump operates smoothly before putting into service. Replace worn or damaged parts and assemblies with factory Authorized Replacement Parts only (See Replacement Parts Section). Lubricate as instructed in Maintenance Section.

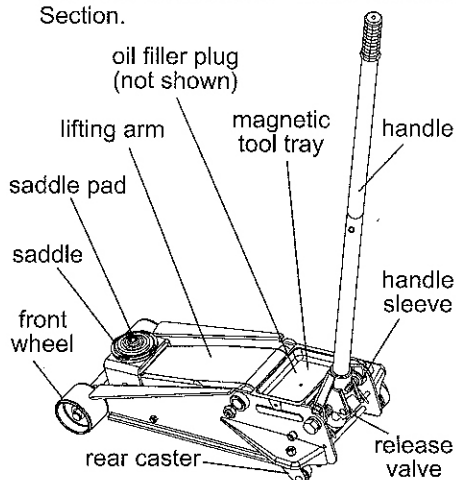


Figure 1 - Typical SpeedyLift hydraulic jack

## **WARNING**

Study, understand, and follow all instructions provided with and on this device. Do not exceed rated capacity. This is a lifting device only. After lifting, immediately transfer the load to appropriately rated vehicle stands. Never work on, under, or around a load supported by this device only. Use only on hard, level surfaces capable of sustaining rated capacity loads. Do not move or dolly loads with this device. Failure to heed this marking may result in personal injury and/or property damage.

## **WARNING**



To avoid crushing and related injuries: NEVER work on, under or around a load supported only by a jack. ALWAYS use adequately rated jack stands.

## **! SAFETY MESSAGE !**

Be sure all tools and personnel are clear before lowering load. No alterations shall be made to this device. Only attachments and/or adapters supplied by the manufacturer shall be used. Lift only on areas of the vehicle as specified by the vehicle manufacturer.

## **OPERATION**

**Lifting** (refer to Fig 1, Page 2)

1. Place vehicle in park, with emergency brake on and wheels securely chocked to prevent inadvertent vehicle movement.
2. Close release valve by turning handle clockwise until firm resistance is felt Center jack saddle under lift point.
3. Verify lift point, pump handle to contact lift point. To lift, pump handle until load reaches desired height.
4. Transfer the load immediately to appropriately rated jack stands.

## **Lowering**

1. Raise load high enough to clear the jack stands, then carefully remove jack stands (**always** used in pairs).
2. Slowly turn the handle counterclockwise, but no more than 1/2 full turn. If the load fails to lower:
  - a. Use another jack to raise the vehicle high enough to reinstall jack stands.
  - b. Remove the affected jack and then the stands.
  - c. Using the other jack, lower the load by turning the operating handle counterclockwise, but no more than 1/2 full turn.
3. After removing jack from under the load, push saddle down to reduce ram exposure to rust and contamination.

## **ASSEMBLY**

Little, if any, assembly is required of this jack. Familiarize yourself with the illustrations in the owner's manual. Know your jack and how it operates before attempting to use.

## MAINTENANCE

**Important:** Use only a good grade hydraulic jack oil (e.g. Mobil DTE 13M or equivalent). Avoid mixing different types of fluid and **Never** use brake fluid, turbine oil, transmission fluid, motor oil or glycerin. **Improper fluid can cause failure of the jack and the potential for sudden and immediate loss of load.**

### Adding oil

1. With saddle fully lowered set jack in its upright, level position. Locate and remove oil filler plug.
2. Fill with oil until ~3/16" above the inner cylinder as seen from the oil filler plug hole. Reinstall the oil filler plug.

### Changing oil

For best performance and longest life, replace the complete fluid supply at least once per year.

1. With saddle fully lowered, remove the oil filler plug.
2. Lay the jack on its side and drain the fluid into a suitable container.

## MAINTENANCE (continued)

**Note:** Dispose of hydraulic fluid in accordance with local regulations.

3. Fill with oil until ~3/16" above the inner cylinder as seen from the oil filler plug hole. Reinstall the oil filler plug.

### Lubrication

A periodic coating of light lubricating oil to pivot points, axles and hinges will help to prevent rust and assure that wheels, casters and pump assemblies move freely.

### Cleaning

Periodically check the pump piston and ram for signs of rust or corrosion. Clean as needed and wipe with an oily cloth.

**Note:** Never use sandpaper or abrasive material on these surfaces!

### Storage

When not in use, store the jack with saddle fully lowered.

## TROUBLESHOOTING

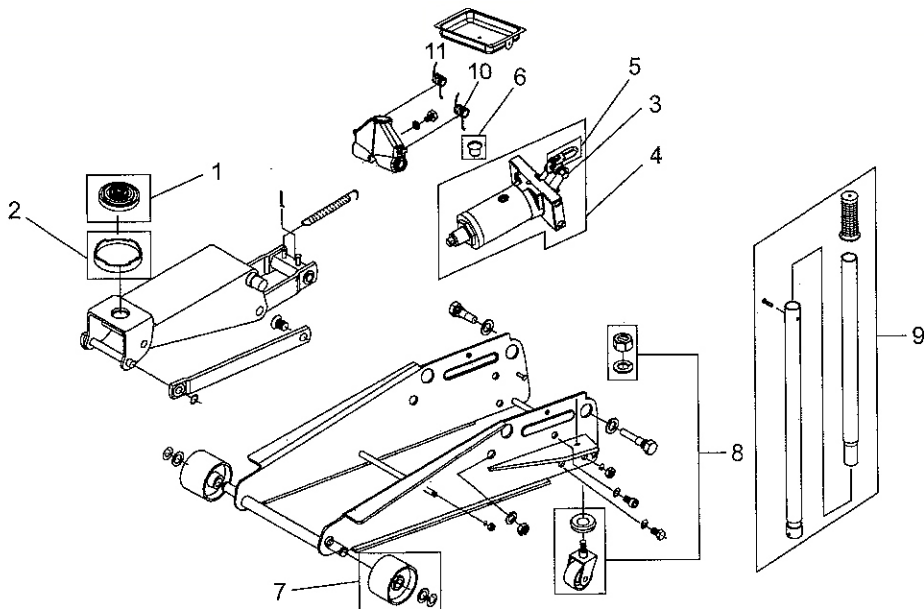
Symptom	Possible Causes	Corrective Action
Jack will not lift load	<ul style="list-style-type: none"><li>• Release valve not tightly closed</li><li>• Overload condition</li></ul>	<ul style="list-style-type: none"><li>• Ensure release valve tightly closed</li><li>• Remedy overload condition</li></ul>
Jack bleeds off after lift	<ul style="list-style-type: none"><li>• Release valve not tightly closed</li><li>• Overload condition</li><li>• Hydraulic unit malfunction</li></ul>	<ul style="list-style-type: none"><li>• Ensure release valve tightly closed</li><li>• Remedy overload condition</li><li>• Contact Customer Support</li></ul>
Jack will not lower after unloading	<ul style="list-style-type: none"><li>• Reservoir overfilled</li><li>• Linkages binding</li></ul>	<ul style="list-style-type: none"><li>• Drain fluid to proper level</li><li>• Clean and lubricate moving parts</li></ul>
Poor lift performance	<ul style="list-style-type: none"><li>• Fluid level low</li><li>• Air trapped in system</li></ul>	<ul style="list-style-type: none"><li>• Ensure proper fluid level</li><li>• With lift arm fully lowered, remove oil filler plug to let pressurized air escape, then reinstall oil filler plug.</li></ul>
Will not lift to full extension	<ul style="list-style-type: none"><li>• Fluid level low</li></ul>	<ul style="list-style-type: none"><li>• Ensure proper fluid level</li></ul>

## REPLACEMENT PARTS

Not all components of the jack are replacement items, but are illustrated as a convenient reference of location and position in the assembly sequence. When ordering parts, give model number, serial number and description below. Call or write for current pricing: Michelin Consumer Enquiries at 1-877-246-6006.

Model G-735

<u>No.</u>	<u>Part No.</u>	<u>Description</u>	<u>Quantity</u>
1	G738-10002-0630	saddle pad	1
2	G493-13000-1000	saddle assembly	1
3	G73500-0005	pump piston	1
4	G735-30000-0000	power unit assembly	1
5	G73500-0007 (5-3/16")	u-joint assembly	1
	G73800-0002 (6-1/2")		
6	F36100-0001	oil filler plug	1
7	G73500-0018	front wheel	2
8	G73500-0003	caster assembly	2
9	G73500-0022	handle assembly	1
10	G735-20005-0410	right spring	1
11	G735-20006-0410	left spring	1
--	G73504-0000	seal kit	



Manufactured under licence by MVP

**Consumer enquiries:**

**Tel: 1-877-246-6006**

**E-mail: [michelin@shinnfuamerica.com](mailto:michelin@shinnfuamerica.com)**

Michelin and the Tyre Man (Bibendum)  
are trademarks used with permission  
from the Michelin Group.

©2006 Michelin

[www.michelin.com](http://www.michelin.com)