


- Operating Instructions
- Warning Information
- Parts Breakdown



**!WARNING**



THE USE OF THIS JACK IS LIMITED TO THE REMOVAL, INSTALLATION, AND TRANSPORTATION IN THE LOWERED POSITION, OF TRANSMISSIONS AND DIFFERENTIALS. IT MAY BE USED WITH APPROPRIATE ADAPTERS MANUFACTURED SPECIFICALLY FOR THE JACK TO HANDLE OTHER COMPONENTS, SUCH AS REAR AXLE UNITS AND TRANSFER CASES, WITHIN THE WEIGHT LIMITATIONS SPECIFIED. NO ALTERATION TO THE JACK OR ADAPTERS SHALL BE MADE.

BE SURE THE VEHICLE IS APPROPRIATELY SUPPORTED BEFORE STARTING REPAIRS.

DO NOT OVERLOAD. OVERLOADING CAN CAUSE DAMAGE TO OR FAILURE OF THE JACK.

ONLY ATTACHMENTS AND/OR ADAPTERS SUPPLIED BY THE MANUFACTURER SHALL BE USED.

THIS JACK IS DESIGNED FOR USE ONLY ON HARD LEVEL SURFACES CAPABLE OF SUSTAINING THE LOAD. USE ON OTHER THAN HARD LEVEL SURFACES CAN RESULT IN JACK INSTABILITY AND POSSIBLE LOSS OF LOAD.

READ, STUDY AND UNDERSTAND THE OPERATING MANUAL PACKED WITH THIS JACK BEFORE OPERATING.

FAILURE TO HEED THESE WARNINGS MAY RESULT IN LOSS OF LOAD, DAMAGE TO JACK, AND/OR FAILURE RESULTING IN PROPERTY DAMAGE, PERSONAL OR FATAL INJURY.

**!WARNING**

FOR YOUR SAFETY AND TO PREVENT INJURY:



Use jack for lifting purposes **ONLY**.

Always support vehicle with jack stands.

**!WARNING**



ALWAYS READ INSTRUCTIONS BEFORE USING POWER TOOLS



ALWAYS WEAR SAFETY GOGGLES



WEAR HEARING PROTECTION



AVOID PROLONGED EXPOSURE TO VIBRATION

## TJ1000

### 1000 LB. Telescopic Transmission Jack

## OWNER/USER RESPONSIBILITY

The owner and/or user must have an understanding of the manufacturer's operating instructions and warnings before using the transmission jack. Personnel involved in the use and operation of equipment shall be careful, competent, trained, and qualified in the safe operation of the equipment and its proper use when servicing motor vehicles and their components. Warning information should be emphasized and understood. If the operator is not fluent in English, the manufacturer's instructions and warnings shall be read to and discussed with the operator in the operator's native language by the purchaser/owner, making sure that the operator comprehends its contents.

Owner and/or user must study and maintain for future reference the manufacturer's instructions and pertinent warning information. Owner and/or user is responsible for keeping all warning labels and instruction manuals legible and intact. Replacement labels and literature are available from the manufacturer.

## INSPECTION

Visual inspection should be made before each use of the transmission jack. Any jack which appears to be damaged in any way, is found to be badly worn, or operates abnormally must be removed from service. If the jack is accidentally subjected to an abnormal load or shock it must be inspected by a manufacturer's authorized repair facility immediately. It is recommended that an annual inspection of the jack be made by a manufacturer's authorized repair facility and that any defective parts, decals, or warning labels be replaced with manufacturer's specified parts. All repairs must be made by a factory authorized service center. A list of authorized repair facilities is available from the manufacturer.

## MAINTENANCE INSTRUCTIONS

1. Regularly lubricate all moving parts, paying close attention to the tilt screws and related linkages.
2. Regularly check the oil level in ram. With the saddle in the lowest position, the oil level should be up to the filler screw hole. Use SAE 30 hydraulic jack oil; do not use hydraulic brake fluid or transmission fluid.
3. If jack fails to operate - check oil level and/or bleed air from unit.

## IMPORTANT! BEFORE USE

Check to see if oil level is up to the hole. Fill if necessary with clean hydraulic jack oil. NOTE: jack will not operate properly unless full of fluid.

*Sometimes during shipment and handling air gets into the hydraulic system, causing poor lifting performance.*

**Bleeding the pump:** With the release lever down, pump pedal several times to force excess air from the piston area. It should then be possible to raise the ram with normal foot pedal action.

**Bleeding the ram:** Pump the ram up until it is fully extended by slowly pumping the foot pedal. Loosen the purge plug on top of the first stage ram. Air will be released as the saddle slowly comes down. When oil begins to leak out of the purge plug, tighten it finger tight.

## ASSEMBLY INSTRUCTIONS

1. Install legs to chassis by using #7 (1-6) bolts, #9 (1-8) nuts, and #8 (1-7) washers.
2. Install leg assemblies to hydraulic power unit by using #19 (2-10) bolts, #21 (2-12) nuts, and #20 (2-11) washers.  
Do not use any kind of air ratchet or air gun to tighten any bolt on this unit!
3. Assemble hydraulic power unit and saddle head plate assembly.

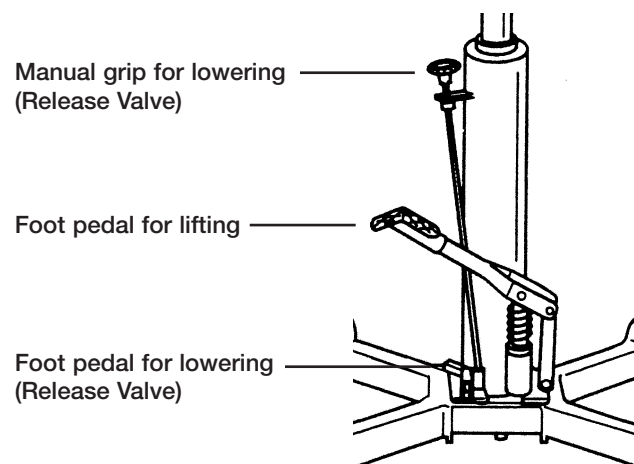
## OPERATING INSTRUCTIONS

1. Lifting: Close release valve first, pump pedal to raise saddle to contact load. Position jack so weight of load will be equally distributed on saddle, and adjust pitch and tilt controls as necessary. Position corner support brackets and secure load with load restraint strap as required.

### WARNING:

**Always use the Load Restraint Strap, Corner Support Brackets, and attachments to stabilize and firmly secure the load to the saddle.**

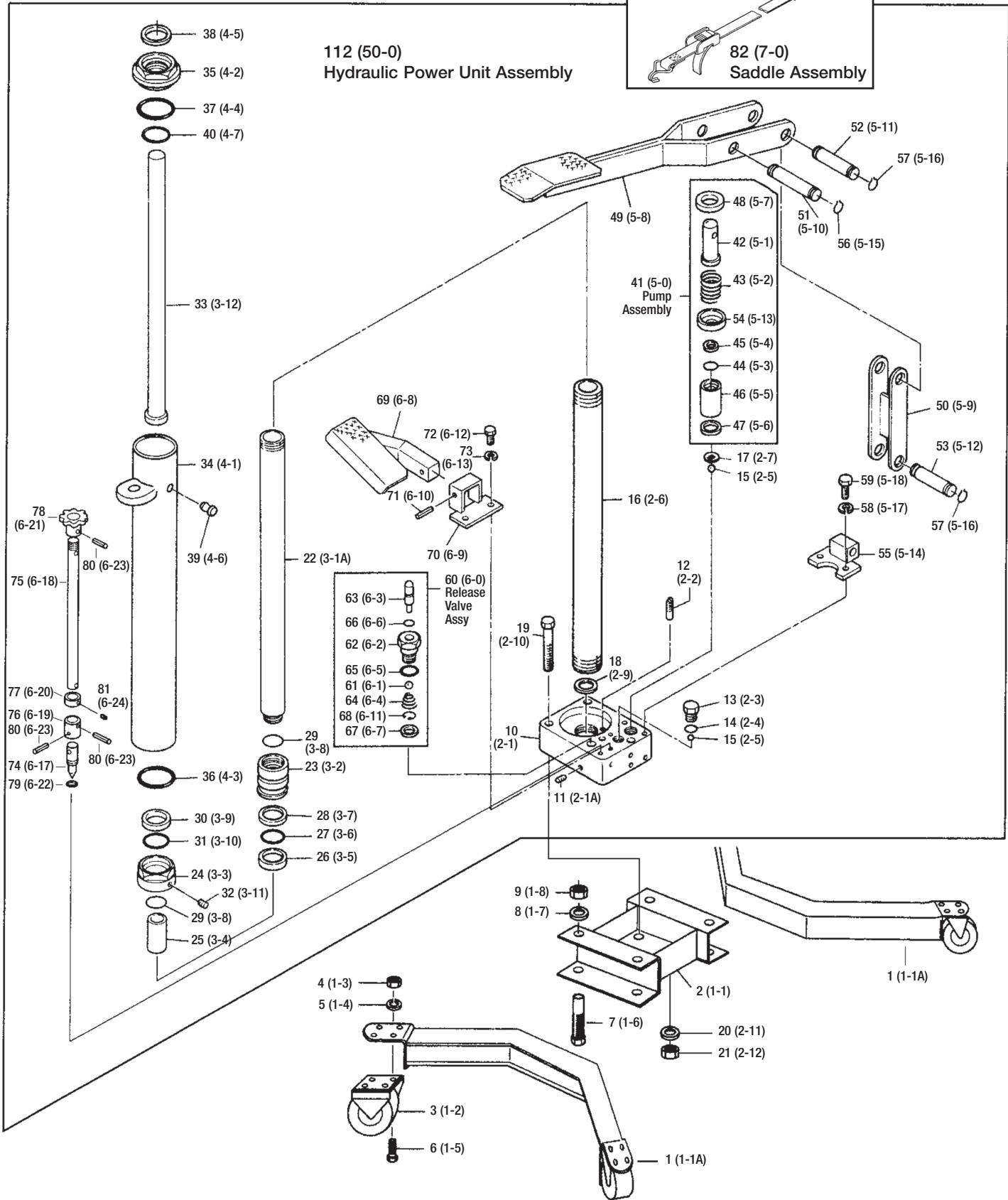
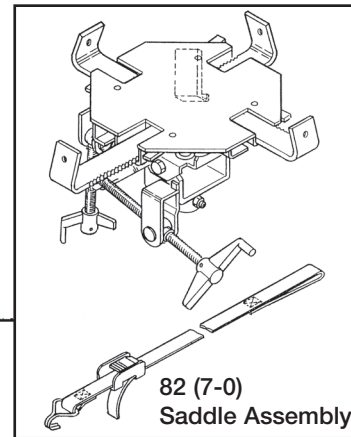
2. Lowering: This jack features two lowering systems:
  - 1) Foot Pedal: press foot pedal slowly to open the release valve.
  - 2) Manual Grip: turn manual grip counterclockwise slowly to open the release valve.





# TJ1000

## 1000 Lb. Telescopic Transmission Jack

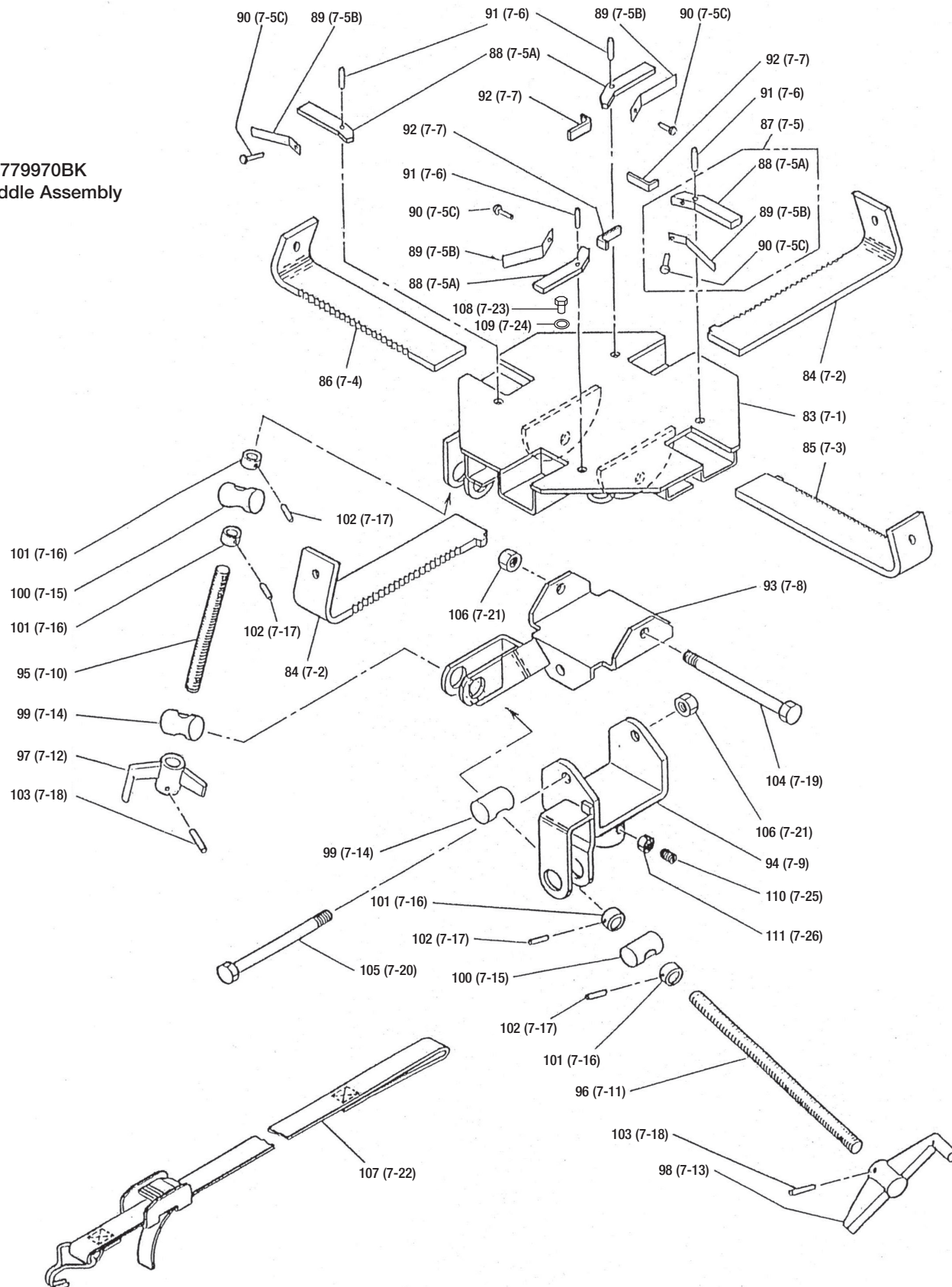




# TJ1000

## 1000 Lb. Telescopic Transmission Jack

RS779970BK  
Saddle Assembly



TJ1000

4

Rev. 07/25/07

Ref. No.	Part No.	Part Description	Qty./set	Ref. No.	Part No.	Part Description	Qty./set
1 (1-1A)	RS779711A	Leg	2	60 (6-0)	RS779760	Release Valve Ass'y.	1
2 (1-1)	RS779711	Chassis	1	•61 (6-1)		Steel Ball	1
3 (1-2)	RSSC301B	Swivel Caster	4	•62 (6-2)		Release Valve Lock Nut	1
+4 (1-3)		Nut	16	•63 (6-3)		Throttle	1
+5 (1-4)		Spring Washer	16	•64 (6-4)		Spring	1
+6 (1-5)		Bolt	16	•65 (6-5)*		O-Ring	1
++7 (1-6)		Bolt	4	•66 (6-6)*		O-Ring	1
++8 (1-7)		Spring Washer	4	•67 (6-7)*		Copper Packing	1
++9 (1-8)		Nut	4	•68 (6-11)		Snap Ring	1
10 (2-1)		Oil Box	1	69 (6-8))		Foot Pedal For Lowering (release valve)	1
11 (2-1A)		Plug With Hex Head Hole	7	70 (6-9)		Pedal Bracket	1
12 (2-2)		Oil Strainer	1	71 (6-10)		Spring Pin	1
13 (2-3)		Blind Bolt	1	72 (6-12)		Hex Head Bolt	1
14 (2-4)		Copper Packing	1	73 (6-13)		Spring Washer	2
15 (2-5)		Steel Ball	2	74 (6-17)	RS7797617	Release Valve	1
16 (2-6)		Cylinder	1	75 (6-18)	RS7797618	Release Valve Rod	1
17 (2-7)		Lock Washer	1	76 (6-19)		Collar	1
18 (2-9)		Copper Packing	1	77 (6-20)		Stop Collar	1
++19 (2-10)		Bolt	3	78 (6-21)		Release Valve Grip	1
++20 (2-11)		Spring Washer	3	79 (6-22)		O-Ring	1
++21 (2-12)		Hex Head Nut	3	80 (6-23)		Spring Pin	3
22 (3-1A)		Piston Rod (Big)	1	81 (6-24)		Screw	1
23 (3-2)		Packing Step	1	82 (7-0)	RS779970BK	Saddle Ass'y. (complete)	1
24 (3-3)		Grand Nut	1	83 (7-1)		Saddle Head	1
25 (3-4)		Sleeve	1	84 (7-2)	RS779972	Bracket (A)	2
26 (3-5)*		Extra Wearing	1	85 (7-3)	RS779973	Bracket (B)	1
27 (3-6)*		O-Ring	2	86 (7-4)	RS779974	Bracket (C)	1
28 (3-7)*		Back-Up Ring	1	87 (7-5)	RS77997567	Stopper Gear Ass'y (incl. #88-92)	4
29 (3-8)*		O-Ring	2	•88 (7-5A)		Stopper Gear	4
30 (3-9)*		Oil Seal	1	•89 (7-5B)		Leaf Spring	4
31 (3-10)*		O-Ring	1	•90 (7-5C)		Rivet	4
32 (3-11)		Plug with Hex Head Hole	1	•91 (7-6)		Spring Pin	4
33 (3-12)		Piston Rod (Small)	1	•92 (7-7)		Stopper	3
34 (4-1)		Oil Tank	1	93 (7-8)		Saddle Bracket	1
35 (4-2)		Tank Nut	1	94 (7-9)		Tilt Base	1
36 (4-3)*		O-Ring	1	95 (7-10)	RS779970710	Tilt Thread (A)	1
37 (4-4)*		O-Ring	1	96 (7-11)	RS779970711	Tilt Thread (B)	1
38 (4-5)*		Oil Seal	1	97 (7-12)	RS779970712	Tilt Thread (C) (incl. #103)	1
39 (4-6)		Oil Fill Cap	1	98 (7-13)	RS779970713	Tilt Thread (D) (incl. #103)	1
40 (4-7)*		O-Ring	1	99 (7-14)		Tilt Screw	2
41 (5-0)	RS779750	Pump Ass'y.		100 (7-15)		Tilt Pin	2
•42 (5-1)		Plunger	1	101 (7-16)		Tilt Collar	4
•43 (5-2)		Spring	1	102 (7-17)		Spring Pin	4
•44 (5-3)*		O-Ring	1	103 (7-18)		Spring Pin	2
•45 (5-4)*		Oil Seal	1	104 (7-19)		Tilt Shaft (A)	1
•46 (5-5)		Pump Cylinder	1	105 (7-20)		Tilt Shaft (B)	1
•47 (5-6)*		Copper Packing	1	106 (7-21)		U-type Nut	2
•48 (5-7)		Spring Retainer	1	107 (7-22)	RS779970STRAP	Strap	1
49 (5-8)		Foot Pedal For Lifting	1	108 (7-23)		Bolt	1
50 (5-9)		Link	1	109 (7-24)		Washer	1
51 (5-10)		Plunger Pin	1	110 (7-25)		Bolt	4
52 (5-11)		Pin A	1	111 (7-26)		Spring Washer	4
53 (5-12)		Pin B	1	112 (50-0)	RS779750-0	Hydraulic Power Unit Ass'y	
•54 (5-13)		Spring Retainer B	1				
55 (5-14)		Link Bracket	1				
56 (5-15)		Cotter Pin	2				
57 (5-16)		Cotter Pin	4				
58 (5-17)		Hex Head Bolt	2				
59 (5-18)		Spring Washer	1				

+ Means these items are available as a Caster Bolt Kit Part #RSCBK

++ Means these items are available as a Transmission Jack Bolt Kit Part #RSTJBK

\* Means these items are available as a Seal Kit Part #RS7797SK.

• Means items come as an assembly only.

NOTE: Reference Numbers without Part Numbers are not available.



## TJ1000 SPECIFICATIONS

Capacity.....	1000 Lbs.
Low Height.....	33"
Raised Height .....	69"
Saddle Tilt Forward.....	15°
Saddle Tilt Backward .....	20°
Saddle Tilt Side to Side .....	10°
Base.....	35-1/2" x 33-1/2"
Shipping Weight .....	170 Lbs.



## Warranty

Matco® shop equipment and tools, excluding accessories, are warranted against defects in materials or workmanship for a period of 1 year from original purchase. We will repair or replace at our option any defective part or unit which proves to be defective in material or workmanship within this warranty plan. This warranty does not cover damage to equipment or tools arising from alteration, abuse or misuse, and does not cover any repairs or replacement made by anyone other than Matco or its authorized service centers.

The foregoing obligation is Matco Tools sole liability under this or any implied warranty and under no circumstances shall we be liable for any incidental or consequential damages.

**NOTE:** Some states do not allow the exclusion or limitation of incidental or consequential damages, so the above limitation or exclusion may not apply to you.

Return equipment or parts to Matco Tools, or an authorized service center, transportation prepaid. Be certain to include your name and address, evidence of the purchase date, and description of the suspected defect.

If you have any questions about warranty service, please write to Matco Tools, Stow, OH 44224. This warranty gives you specific legal rights and you may also have other rights which vary from state to state.