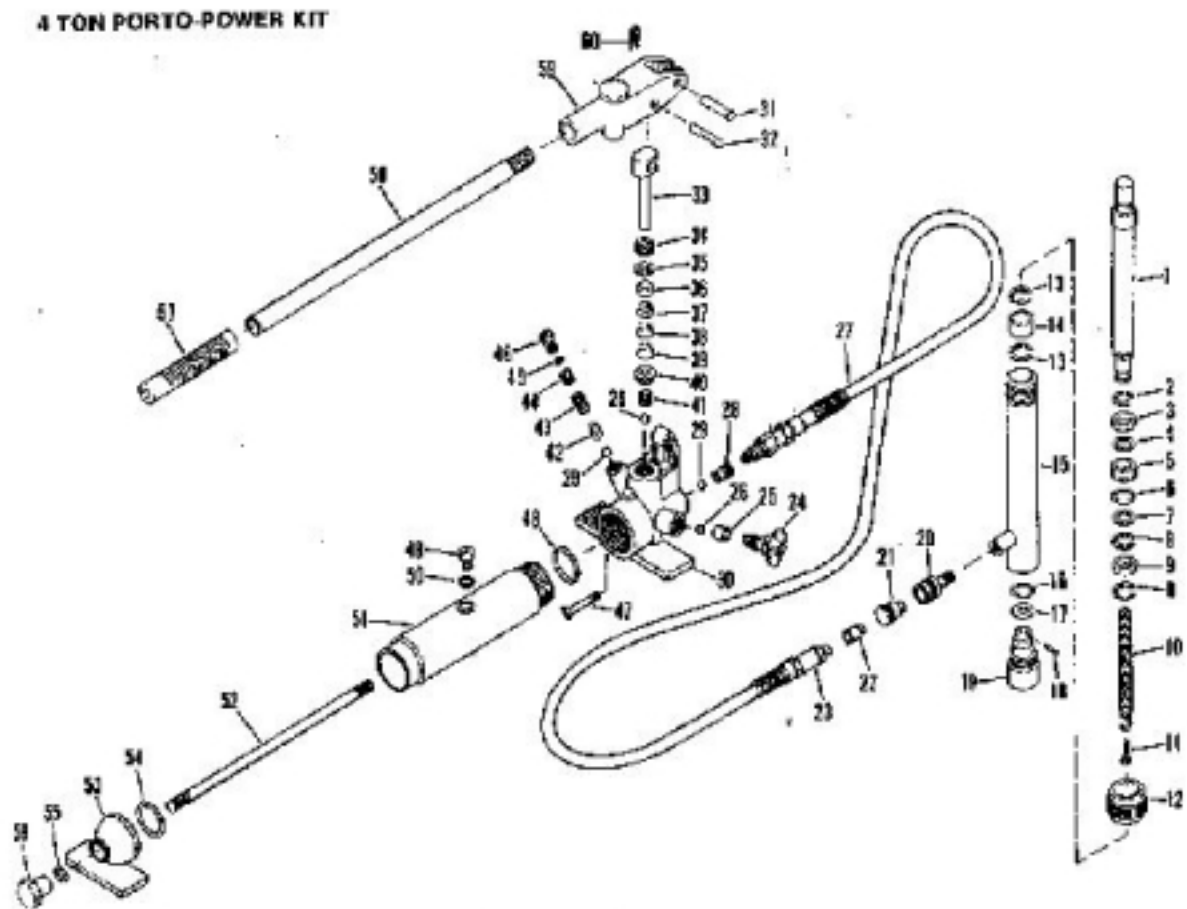


4-TON PORTAPOWER (PP417) - Parts Manual

Frame Straightening & Body Jacks > PP417 > 4-TON PORTAPOWER



Notes: VENDOR - LINCOLN AUTOMOTIVE

Figure No	Part Number	Description	No. Reqd
0	*GLB65159	8 1/2" Extension Tube (not shown)	1
0	*GLB65155	Ram Toe (not shown)	1
0	*GLB65151	Serrated Saddle (not shown)	1
0	*GLB65154	Plunger Toe (not shown)	1

0	*GLB65153	Wedge Head (not shown)	1
0	*GLB65177	Male Connector for tubes (not shown)	1
0	*GLB65178	Rubber Head Accessory (not shown)	1
0	*GLB65156	Flat Base (not shown)	1
0	*GLB65152	90 degree Combo Head (not shown)	1
0	PP417-P	PUMP F/PP417	1
0	*GLH3162900	PUMP / RAM SEAL KIT	1
0	PP417-S	SPREADER FOR 4 & 10 TON	1
0	GL312-988200	BLACK PLASTIC CASE F/PP1016	1
0	PP417-R	RAM F/PP417	1
0	*GLB65160	16 1/2" Extension Tube	1
0	*GLB65161	19 1/2" Extension Tube (not shown)	1
0	*GLB65157	3" Extension Tube	1
0	*GLB65158	6" Extension Tube (not shown)	1
1	*GLH6935500	Ram Plunger	1
2	*GLH6928600	Snap Ring	1
3	*GLH6927500	Collar	1
4	*GLH6928900	Backup, Ring	1
5	*GLH6929000	U-Cup	1
6	*GLH6929700	"O" Ring	1
7	*GLH6929900	Washer	1
8	*GLH6934000	Internal Snap Ring	2
9	*GLH6928300	Bushing	1
10	*GLH6935900	Spring	1
11	*GLH6934500	Hex Head Bolt	1
12	*GLH6947600	Thread Protector, Ring	1
13	*GLH6928400	Retaining Ring	2
14	*GLH6935800	Cylinder Collar	1
15	*GLH3161900	Cylinder	1
16	*GLH6935200	"O" Ring	1
17	*GLH6928700	Back-Up, Ring	1
18	*GLH6947500	Spring Pin	1
19	*GLH3162000	Cylinder Base	1
20	*GLB69477	Quick Coupler - Female	1
21	*GLH6935600	Dust Cover - Female	1
22	*GLH6929100	Dust Cover - Male	1
23	PP69478	COUPLER (METRIC) CHROME	1
24	*GLH6934300	Release Valve	1

25	*GLH6952200	Packing - Release Valve	1
26	*GLH6941500	Ball 1/4"	2
27	*GLH67704	Hose	1
28	*GLH6929800	Bolt Plug	1
29	*GLH6941400	Ball 3/16"	2
30	*GLH31622	Base	1
31	*GLH6935100	Pin - Socket	1
32	*GLH6929200	Pin - Piston	1
33	*GLH6934800	Piston - Pump	1
34	*GLH6929600	Screw Adjustment	1
35	*GLH6929300	Washer	1
36	*GLH6927900	Upper seal Base	1
37	*GLH6929400	"V" - Oil Seal	1
38	*GLH6947900	"V" - Oil Seal	1
39	*GLH6927800	"V" - Oil Seal	4
40	*GLH6927700	Lower Seal Base	1
41	*GLH6927600	Cup Filter	1
42	*GLH6943400	Spring Cup	1
43	*GLH6928100	Spring Safety Valve	1
44	*GLH6934100	Screw Safety Valve	1
45	*GLH6928200	"O" Ring Safety Valve	1
46	*GLH6934200	Screw Protector Safety Valve	1
47	*GLH6941700	Filter	1
48	*GLH6928000	"O" Ring	2
49	*GLH6126300	Filler Screw	1
50	*GLH6943700	"O" Ring Filler Screw	1
51	*GLH31624	Reservoir	1
52	*GLH6933900	Bolt Rod	1
53	*GLH31625	Bracket	1
54	*GLH6928000	"O" Ring Reservoir	1
55	*GLH69285	"O" Ring	1
56	*GLH31626	Nut	1
57	*GLH6935400	Rubber Hand Grip	1
58	*GLH31627	Handle	1
59	*GLH31628	Handle Sleeve	1
60	*GLH6940900	Retaining Ring	1