



PARTS BREAKDOWN AND OPERATING MANUAL

MODEL # MTJ1A
3/4 Ton Capacity Adj.
Underhoist Stand w/Pedal

INSPECTION:

Visual inspection should be made before each use of the underhoist stand. Any stand which appears to be damaged in any way, found to be badly worn, or operates abnormally **MUST BE REMOVED FROM SERVICE**. If the stand is accidentally subjected to an abnormal load or shock it must be inspected by a manufacturer's authorized repair facility immediately. It is recommended that an annual inspection of the stand be made by a manufacturer's authorized repair facility and that any defective parts, decals, or warning labels be replaced with manufacturer's specified parts.. All repairs must be made by a factory authorized service center. A list of authorized repair facilities is available from the manufacturer.

OWNER/USER RESPONSIBILITY:

The owner and/or user must have a thorough understanding of the manufacturer's operating instructions and warnings before using the underhoist stand. Personnel involved in the use and operation of equipment shall be careful, competent, trained, and qualified in the safe operation of the equipment and its proper use when servicing motor vehicles and their components. Warning information should be emphasized and understood. If the operator is not fluent in English, the manufacturer's instructions and warnings shall be read to and discussed with the operator in the operator's native language by the purchaser/owner, making sure that the operator comprehends its contents. Owner and/or user must study and maintain for future reference the manufacturer's instructions and pertinent warning information. Owner and/or user is responsible for keeping all warning labels and instruction manuals legible and intact. Replacement labels and literature are available from the manufacturer.

SPECIFICATIONS

Capacity	1500 Lbs.
Low Height	53"
Raised Height	80"
Base	12" Diameter
Shipping Wt.	29 Lbs.

⚠ WARNING



THIS UNIT IS AN ACCESSORY STAND ONLY AND IS NOT DESIGNED OR INTENDED TO SUPPORT VEHICLES.

DO NOT OVERLOAD STAND. OVERLOADING CAN CAUSE DAMAGE TO, OR FAILURE OF, THE STAND.

PLACE LOAD IN THE CENTER OF THE SADDLE ONLY. LOADED STAND MUST BE STABLE BEFORE PROCEEDING WITH WORK.

A VISUAL INSPECTION SHOULD BE MADE BEFORE EACH USE OF THE STAND, CHECKING FOR CRACKED, DAMAGED, LOOSE OR MISSING PARTS.

USE STANDS ON HARD LEVEL SURFACE CAPABLE OF SUSTAINING THE LOAD. USE ON OTHER THAN HARD LEVEL SURFACES MAY RESULT IN POSSIBLE LOSS OF LOAD.

NO ALTERATIONS TO THE STAND SHALL BE MADE.

READ, STUDY AND UNDERSTAND THE INSTRUCTION MANUAL PACKED WITH THIS STAND BEFORE USING STAND.

FAILURE TO HEED THESE WARNINGS MAY RESULT IN LOSS OF LOAD, DAMAGE TO STAND, AND/OR FAILURE RESULTING IN PROPERTY DAMAGE, PERSONAL OR FATAL INJURY.

MODEL # MTJ1A

3/4 Ton Capacity

Adj. Underhoist Stand

ASSEMBLY INSTRUCTIONS:

1. Attach Post Support (#4) to Base (#1.)
2. Insert Post (#2) into the Post Support (#4). Secure by aligning the holes of both the Post (#2) and Post Support (#4) and inserting (1) 5/8" x 2-1/2" Clevis Pin (#5), (2) 11/16" Washers (#6), and (1) Cotter Pin (#7). See exploded diagram for proper placement.
3. Attach Pedal (#10) to the Post Support (#4) and secure with (1) 1/2" x 1-1/2" Clevis Pin (#8), (2) 1/2" Washers (#9) and (1) Cotter Pin (#7). See exploded diagram for proper placement.
4. Set Saddle (#11) on top of Post (#2) and screw Hex Bolt (#12) through saddle to secure on post.

OPERATING INSTRUCTIONS:

To Raise:

Turn adjusting handle clockwise until saddle contacts load. Continue turning handle to raise load to required height. For extra height, press down on foot pedal (#10).

To Lower:

Turn adjusting handle counterclockwise.

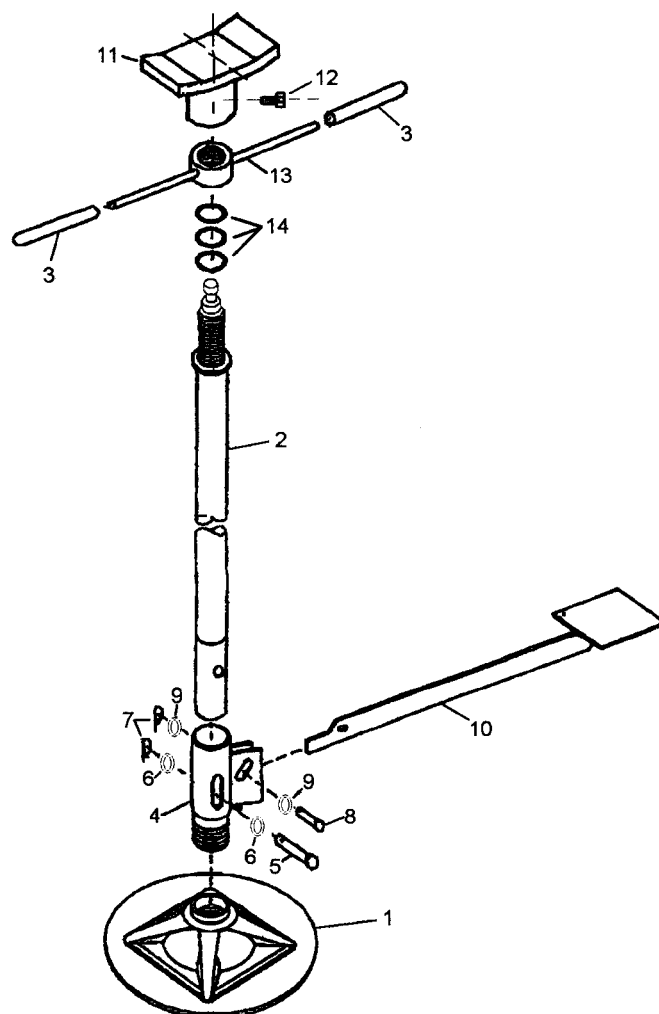
LIMITED WARRANTY:

Matco shop equipment and tools excluding accessories, are warranted against defects in materials or workmanship for a period of 1 year from original purchase. We will repair or replace at our option any defective part or unit which proves to be defective in material or workmanship within this warranty plan. This warranty does not cover damage to equipment or tools arising from alteration, abuse, misuse, damage and does not cover any repairs or replacement made by anyone other than Matco or its authorized service centers.

The foregoing obligation is Matco's sole liability under this or any implied warranty and under no circumstances shall we be liable for any incidental or consequential damages. NOTE: Some states do not allow the exclusion or limitation of incidental or consequential damages, so the above limitation or exclusion may not apply to you.

Return equipment or parts to service center transportation prepaid. Be certain to include your name and address, evidence of the purchase date, and description of the suspected defect.

This warranty gives you specific legal rights and you may also have other rights which vary from state to state.



Item No.	Part No.	Description	Qty.
1	RS6809A01	Base	1
2	RS681002	Post	1
3	RS6809A03	Handle Grip	2
4	RS681004	Post Support	1
5	RS6809A05	5/8" x 2-1/2" Clevis Pin	1
6	RS6809A06	11/16" Washer	2
7	RS6809A07	Cotter Pin	2
8	RS681008	1/2" x 1-1/2" Clevis Pin	1
9	RS681009	1/2" Washer	2
10	RS681010	Pedal	1
11	RS6809A11	Saddle	1
12	RS6809A12	M8 X 12MM Hex Bolt	1
13	RS6809A08	Handle (including grips)	1
14	RS6808BD02	Bearing Assembly	1