

- Operating Instructions • Warning Information
- Parts Breakdown

SPECIFICATIONS

MT1872L

Wheel Size	3"
Weight	3.3 LBS.
Overall Length	13.9"
Sound Pressure Level	83 dBA
Max. Free Speed	18,000 RPM
Air Inlet	1/4" NPT
Mim. Air Hose Size	3/8" ID
Recommended Air Pressure	90 PSI
Average Air Consumption	3.5 CFM



MT1872L

**6" Extended
Cut Off Tool**



!WARNING

- MAXIMUM RPM OF 18,000
- MAX AIR PRESSURE:
90 PSIG, 6.2 BAR
- RATED RPM OF THE
ACCESSORY USED MUST
EXCEED THE MAXIMUM TOOL
RPM SHOWN



ALWAYS READ
INSTRUCTIONS
BEFORE USING
POWER TOOLS



ALWAYS WEAR
SAFETY GOGGLES



WEAR HEARING
PROTECTION



AVOID
PROLONGED
EXPOSURE TO
VIBRATION

!WARNING

Some dust created by power sanding, sawing, grinding, drilling, and other construction activities contains chemicals known to cause cancer, birth defects or other reproductive harm. Some examples of these chemicals are:

- Lead from lead-based paints,
- Crystalline silica from bricks and cement and other masonry products, and
- Arsenic and chromium from chemically-treated lumber.

Your risk from these exposures varies, depending on how often you do this type of work. To reduce your exposure to these chemicals: work in a well ventilated area, and work with approved safety equipment, such as those dust masks that are specially designed to filter out microscopic particles.

!WARNING

FAILURE TO OBSERVE THESE WARNINGS COULD RESULT IN INJURY



THIS INSTRUCTION MANUAL CONTAINS IMPORTANT SAFETY INFORMATION.

READ THIS INSTRUCTION MANUAL CAREFULLY AND UNDERSTAND ALL INFORMATION BEFORE OPERATING THIS TOOL.

- Always operate, inspect and maintain this tool in accordance with American National Standards Institute Safety Code of Portable Air Tools (ANSI B186.1) and any other applicable safety codes and regulations.

- For safety, top performance and maximum durability of parts, operate this tool at 90 psig 6.2 bar max air pressure with 3/8" diameter air supply hose.



- Always wear impact-resistant eye and face protection when operating or performing maintenance on this tool.



- Always wear hearing protection when using this tool. High sound levels can cause permanent hearing loss. Use hearing protection as recommended by your employer or OSHA regulation.

- Keep the tool in efficient operating condition.

- Operators and maintenance personnel must be physically able to handle the bulk, weight and power of this tool.



- Air powered tools can vibrate in use. Vibration, repetitive motions or uncomfortable positions over extended periods of time may be harmful to your hands and arms. Discontinue use of tool if discomfort, tingling feeling or pain occurs. Seek medical advice before resuming use.



- Air under pressure can cause severe injury. Never direct air at yourself or others. Always turn off the air supply, drain hose of air pressure and detach tool from air supply before installing, removing or adjusting any accessory on this tool, or before performing any maintenance on this tool. Failure to do so could result in injury. Whip hoses can cause serious injury. Always check for damaged, frayed or loose hoses and fittings, and replace immediately. Do not use quick detach couplings at tool. See instructions for correct set-up.



- Place the tool on the work before starting the tool.
- Slipping, tripping and/or falling while operating air tools can be a major cause of serious injury or death. Be aware of excess hose left on the walking or work surface.



- Keep body working stance balanced and firm. Do not overreach when operating the tool.



- Anticipate and be alert for sudden changes in motion during start up and operation of any power tool.
- Do not carry tool by the hose. Protect the hose from sharp objects and heat.

- Tool shaft may continue to rotate briefly after throttle is released. Avoid direct contact with accessories during and after use. Gloves will reduce the risk of cuts or burns

- Keep away from rotating end of tool. Do not wear jewelry or loose clothing. Secure long hair. Scalping can occur if hair is not kept away from tool and accessories. Choking can occur if neckwear is not kept away from tool and accessories.

- Correct grinding wheel mounting is necessary to prevent injury from broken wheels. Do not use chipped or cracked grinding wheels. Grinding wheels should be a free fit on the spindle to prevent stress at the hole. Use only wheel collars that come with the grinder for mounting the grinding wheel. Flat washers or other adapters may over stress the wheel. Always use heavy paper blotter discs between the wheel collars and the grinding wheel. Tighten the wheel on the spindle to prevent spin off when the air grinder is turned off.

- Use accessories recommended by Matco Tools.

- Do not lubricate tools with flammable or volatile liquids such as kerosene, diesel or jet fuel.

- Do not force tool beyond its rated capacity.

- Do not remove any labels. Replace damaged labels.

OPERATION

Always use the recommended wheel guard to prevent injury from broken grinding wheel parts. If a guard has withstood a wheel breakage, discontinue its use and replace it with a new guard. It may be damaged. Position the guard between the grinding wheel and the operator. Use barriers to protect others from wheel fragments and grinding sparks.



Always wear impact-resistant eye and face protection when involved in the operation of this tool. Even small projectiles can injure eye and cause blindness. A grinding wheel that bursts can cause very serious injury.

Measure the air grinder speed daily with a tachometer to make sure it is not greater than the RPM marked on the grinding wheel. Never use a grinding wheel marked with a speed lower than the air grinder speed.



Before grinding, test grinding wheel by briefly running the tool at full throttle. Be sure to use a barrier (such as under a heavy work table) to stop any possible broken wheel parts.

To Replace Grinding Discs:

1. Use stop spanner (#66) to hold spindle (#47) in place. Unscrew disc nut (#56) using stop spanner (#59).
2. Remove old grinding disc and replace with new grinding disc (grinding disc is not included with the tool).
3. Screw on disc nut (#56) with shoulder side facing tool using stop spanner (#59) and tighten.

MT1872L 6" Extended Cut Off Tool

FEATURES

- Narrow profile for easy access during use.
- Full 1/2HP motor provides great power for heavy duty cutting.
- 180 degree head rotation to direct sparks away from work.
- Safety lever and composite grip make this tool comfortable during use.

AIR SUPPLY

Tools of this class operate on a wide range of air pressures. It is recommended that air pressure of these tools measures 90 PSI at the tool while running free. Higher pressure and unclean air will shorten tool life because of faster wear and may create a hazardous condition.

Water in the air line will cause damage to the tool. Drain the air tank daily. Clean the air inlet filter screen on at least a weekly schedule. The recommended hook-up procedure can be viewed in Figure 1.

The air inlet (Figure 2), used for connecting air supply, has standard 1/4" NPT American Thread.

Line pressure should be increased to compensate for unusually long air hoses (over 25 feet). Minimum hose diameter should be 3/8" I.D. and fittings should have the same inside dimensions.

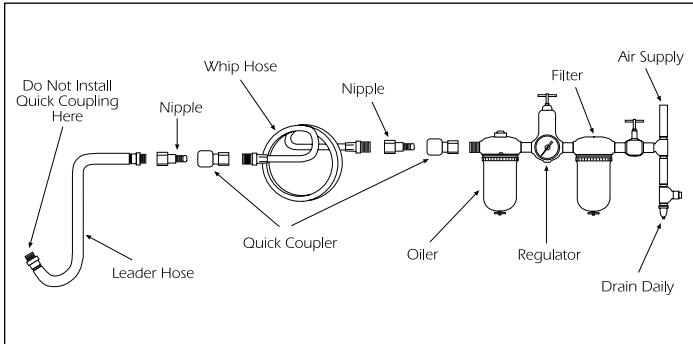


FIG. 1

TROUBLESHOOTING

Other factors outside the tool may cause loss of power or erratic action. Reduced compressor output, excessive drain on the air line, moisture, restrictions in air pipes, the use of hose connections of improper size or poor conditions may reduce air supply. If outside conditions are in order and the tool still performs erratically, disconnect tool from hose and take tool to your nearest Matco authorized service center.

LUBRICATION & MAINTENANCE

Lubricate the tool daily with a good grade of air tool oil. If no air line oiler is used, run 1/2 ounce of oil through the tool. The oil can be squirted into the tool air inlet Figure 2, or into the hose at the nearest connection to the air supply, then run the tool. A rust inhibitive oil is acceptable for air tools.



FIG. 2

WARRANTY

Matco warrants its air tools for a period of 1 year to the consumer. We will repair any MT Series air tool covered under this warranty which proves to be defective in material or workmanship during the warranty period. In order to have your tool repaired, return the tool to one of the Matco Authorized Warranty Centers listed, freight prepaid. Please include a copy of your proof of purchase and a brief description of the problem. The tool will be inspected and if any part or parts are found to be defective in material or workmanship, the tool will be repaired free of charge and returned to you freight prepaid.

This warranty gives you specific rights. You may also have other rights which vary from state to state.

The foregoing obligation is Matco's sole liability under this or any implied warranty and under no circumstances shall Matco be liable for any incidental or consequential damages.

Note: Some states do not allow the exclusion or limitation of incidental or consequential damages so the above limitation or exclusion may not apply to you.

MATCO AIR COMMAND

Tool Repair SV
1330 Commerce Dr.
Stow, OH 44224
(800) 433-7098

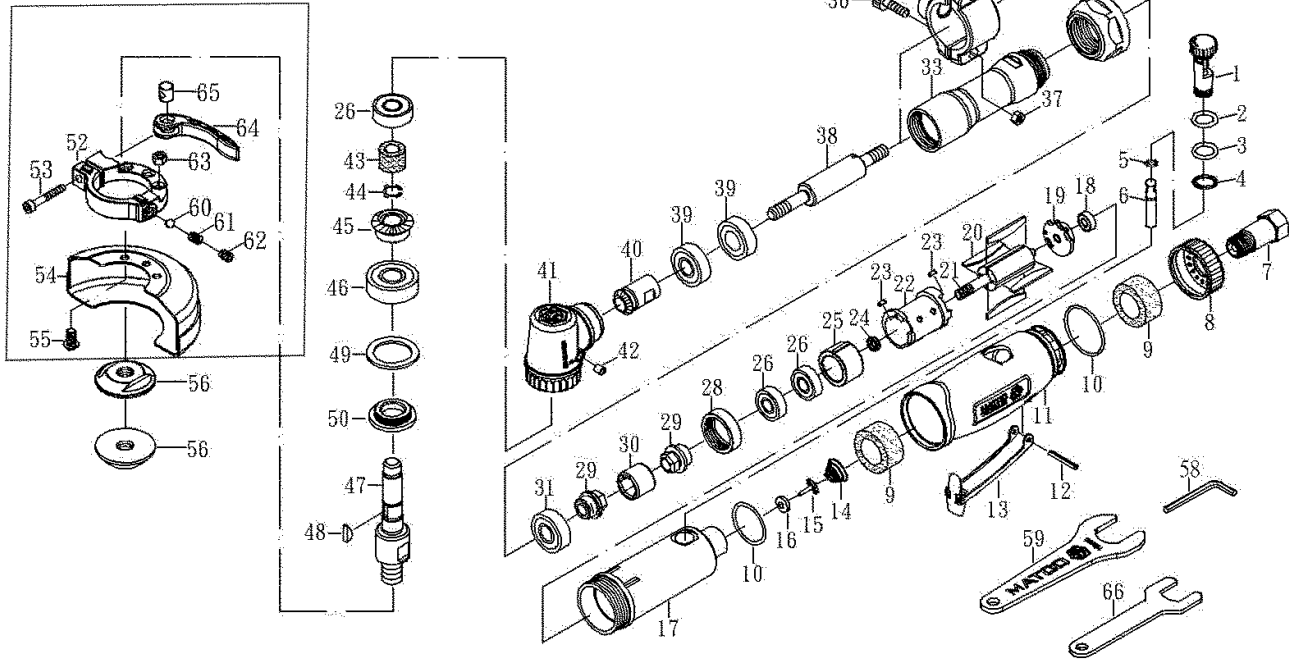
DISCOUNT TOOL REPAIR

3433 Losee Rd. #1
North Las Vegas, NV 89030
(702) 657-6570

PNEUTOOL PARTS & SERVICES CO., LTD

33 Haas Road
Toronto
ON M9W 3A1 Canada
(416) 748-1200
(888) 748-1201 (Toll-Free in Canada)

MT1872L 6" Extended Cut Off Tool



REF. NO.	PART NO.	DESCRIPTION	QTY.
1	RS288301	Regulator	1
2	RS288302	O-Ring	1
3	RS288303	O-Ring	1
4	RS288304	Snap Ring	1
5	RS187505	O-Ring	1
6	RS187506	Valve Stem	1
7	RS288307	Inlet Bushing	1
8	RS187508	Exhaust Sleeve	1
9	RS288309	Silencer	2
10	RS288310	O-Ring	2
11	RS1872L11	Protection Rubber	1
12	RS288312	Pin	1
13	RS288313	Throttle Lever	1
14	RS288314	Spring	1
15	RS288315	Valve	1
16	RS288316	Washer	1
17	RS288317	Housing	1
18	RS30516	Bearing	1
19	RS288319	Rear Plate	1
20	RS288320	Rotor Blade	4
21	RS288321	Rotor	1
22	RS288322	Cylinder	1
23	RS288323	Pin	2
24	RS2GR23	Bearing Spacer	1
25	RS288325	Front Plate	1
26	RS30524	Bearing	3
28	RS288328	Nut	1
29	RS2880L28	Coupling Nut	2
30	RS2880L29	Coupling	1
31	RS30RXL30	Bearing	1
32	RS288329	Clamp Nut	1
33	RS1872L33	Spindle Housing	1
34	RS1872L34	Handle Link (Left)	1
35	RS1872L35	Handle Link (Right)	1

REF. NO.	PART NO.	DESCRIPTION	QTY.
36	RS1872L36	Screw (M5x13L)	2
37	RS1872L37	Nut (M5)	2
38	RS1872L38	Spindle	1
39	RS288734	Bearing	2
40	RS288327	Bevel Gear	1
41	RS1872L41	Angle Housing (including #42)	1
42	RS288331	Oil Cup	1
43	RS1872L43	Absorption Cotton	1
44	RS2GR33A	Snap Ring	1
45	RS288333	Bevel Gear	1
46	RS10920	Bearing	1
47	RS1872L47	Spindle	1
48	RS288337	Key	1
49	RS2883L43	Washer	1
50	RS1872L50	Clamp Nut	1
51	RS60138	Handle	1
52	*	Handle Link	1
53	*	Screw (M4x27L)	1
54	*	Disc Cover	1
55	*	Screw (M4x6L)	3
56	RS187546	Disc Nut	2
58	RS165051	Hex (4M/M)	1
59	RS288341	Stop Spanner (19MM)	1
60	*	Steel Ball (3MM)	1
61	*	Spring	1
62	*	Screw	1
63	*	Nut	3
64	*	Bushing	1
65	*	Trigger	1
66	RS103841	Stop Spanner (17mm)	1

* Asterisked parts only available as an assembly, RS1872L54A, disc cover assembly.