

- Operating Instructions • Warning Information
- Parts Breakdown

SPECIFICATIONS

MT1788

Max. Free Speed	14,000 RPM
Pad Size	.3", 4-1/2", 5-1/2"
Air Inlet	1/4" NPT
Air Hose Size	3/8" ID
Recommended Air Pressure	90 PSIG
Length	5-1/8"
Weight	3 LBS.
Air Consumption	.4 CFM



MT1788

**5"
High Speed
Sander**



!WARNING



**ALWAYS READ
INSTRUCTIONS
BEFORE USING
POWER TOOLS**



**ALWAYS WEAR
SAFETY GOGGLES**



**WEAR HEARING
PROTECTION**



**AVOID
PROLONGED
EXPOSURE TO
VIBRATION**

!WARNING

Some dust created by power sanding, sawing, grinding, drilling, and other construction activities contains chemicals known to cause cancer, birth defects or other reproductive harm. Some examples of these chemicals are:

- lead from lead-based paints,
- crystalline silica from bricks and cement and other masonry products, and
- arsenic and chromium from chemically-treated lumber.

Your risk from these exposures varies, depending on how often you do this type of work. To reduce your exposure to these chemicals: work in a well ventilated area, and work with approved safety equipment, such as those dust masks that are specially designed to filter out microscopic particles.

!WARNING

FAILURE TO OBSERVE THESE WARNINGS COULD RESULT IN INJURY



THIS INSTRUCTION MANUAL CONTAINS IMPORTANT SAFETY INFORMATION.

READ THIS INSTRUCTION MANUAL CAREFULLY AND UNDERSTAND ALL INFORMATION BEFORE OPERATING THIS TOOL.

- Always operate, inspect and maintain this tool in accordance with American National Standards Institute Safety Code of Portable Air Tools (ANSI B186.1) and any other applicable safety codes and regulations.
- For safety, top performance and maximum durability of parts, operate this tool at 90 psig 6.2 bar max air pressure with 3/8" diameter air supply hose.
- Always wear impact-resistant eye and face protection when operating or performing maintenance on this tool.
- Always wear hearing protection when using this tool. High sound levels can cause permanent hearing loss. Use hearing protection as recommended by your employer or OSHA regulation.
- Keep the tool in efficient operating condition.
- Operators and maintenance personnel must be physically able to handle the bulk, weight and power of this tool.
- Air powered tools can vibrate in use. Vibration, repetitive motions or uncomfortable positions over extended periods of time may be harmful to your hands and arms. Discontinue use of tool if discomfort, tingling feeling or pain occurs. Seek medical advice before resuming use.
- Air under pressure can cause severe injury. Never direct air at yourself or others. Always turn off the air supply, drain hose of air pressure and detach tool from air supply before installing, removing or adjusting any accessory on this tool, or before performing any maintenance on this tool. Failure to do so could result in injury. Whip hoses can cause serious injury. Always check for damaged, frayed or loose hoses and fittings, and replace immediately. Do not use quick detach couplings at tool. See instructions for correct set-up.



- Place the tool on the work before starting the tool.
- Slipping, tripping and/or falling while operating air tools can be a major cause of serious injury or death. Be aware of excess hose left on the walking or work surface.
- Keep body working stance balanced and firm. Do not overreach when operating the tool.
- Anticipate and be alert for sudden changes in motion during start up and operation of any power tool.
- Do not carry tool by the hose. Protect the hose from sharp objects and heat.
- Tool shaft may continue to rotate briefly after throttle is released. Avoid direct contact with accessories during and after use. Gloves will reduce the risk of cuts or burns.
- Keep away from rotating end of tool. Do not wear jewelry or loose clothing. Secure long hair. Scalping can occur if hair is not kept away from tool and accessories. Choking can occur if neckwear is not kept away from tool and accessories.
- Never mount a grinding wheel on a sander. A grinding wheel that bursts can cause very serious injury or death when not properly guarded. Inspect backing pad before each use. Do not use if cracked or damaged.
- Avoid direct contact with moving sanding pad to prevent pinching or cutting of hands or other body parts.
- Do not lubricate tools with flammable or volatile liquids such as kerosene, diesel or jet fuel.
- Do not force tool beyond its rated capacity.
- Do not remove any labels. Replace damaged labels.

OPERATION

The air regulator knob can be used as an air throttle and can be used for setting positive speed control. The air inlet used for connecting air supply has standard 1/4" NPT thread.

Let the sander do the work. The normal weight of the machine is sufficient for efficient sanding. Do not put additional pressure on the machine. This will only slow down the speed of the pad, reduce sanding efficiency and put an additional burden on the motor. Start the sander off the work, set it down on the work evenly and move it slowly back and forth in wide, overlapping areas. When finished sanding, lift it off the work before stopping the motor.

FEATURES

- Built-in Matco comfort grip
- Built-in regulator and variable speed trigger
- Comes with 3", 4-1/2" and 5-1/2" backing pads
- 14,000 RPM for power and convenience

AIR SUPPLY

Tools of this class operate on a wide range of air pressures. It is recommended that air pressure of these tools measures 90 PSI at the tool while running free. Higher pressure and unclean air will shorten tool life because of faster wear and may create a hazardous condition.

Water in the air line will cause damage to the tool. Drain the air tank daily. Clean the air inlet filter screen on at least a weekly schedule. The recommended hook-up procedure can be viewed in Figure 1.

The air inlet (Figure 2), used for connecting air supply, has standard 1/4" NPT American Thread.

Line pressure should be increased to compensate for unusually long air hoses (over 25 feet). Minimum hose diameter should be 3/8" I.D. and fittings should have the same inside dimensions.

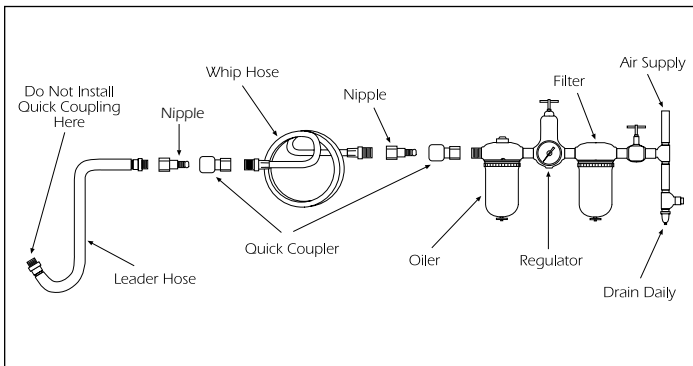


FIG. 1

TROUBLESHOOTING

Other factors outside the tool may cause loss of power or erratic action. Reduced compressor output, excessive drain on the air line, moisture or restrictions in air pipes or the use of hose connections of improper size or poor conditions may reduce air supply. If outside conditions are in order, and the tool continues to run erratically, disconnect tool from hose and take tool to your nearest Matco authorized service center.

LUBRICATION & MAINTENANCE

Lubricate the tool daily with a good grade of air tool oil. If no air line oiler is used, run a teaspoon of oil through the tool. The oil can be squirted into the tool air inlet Figure 2, or into the hose at the nearest connection to the air supply, then run the tool. A rust inhibitive oil is acceptable for air tools.

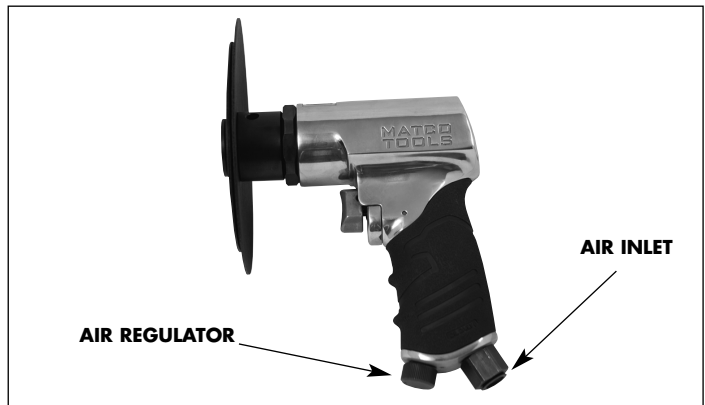


FIG. 2

WARRANTY

Matco warrants its air tools for a period of 1 year to the consumer. We will repair any MT Series air tool covered under this warranty which proves to be defective in material or workmanship during the warranty period. In order to have your tool repaired, return the tool to either of the Matco Authorized Warranty Centers listed below, freight prepaid. Please include a copy of your proof of purchase and a brief description of the problem. The tool will be inspected and if any part or parts are found to be defective in material or workmanship, the tool will be repaired free of charge and returned to you freight prepaid.

This warranty gives you specific rights. You may also have other rights which vary from state to state.

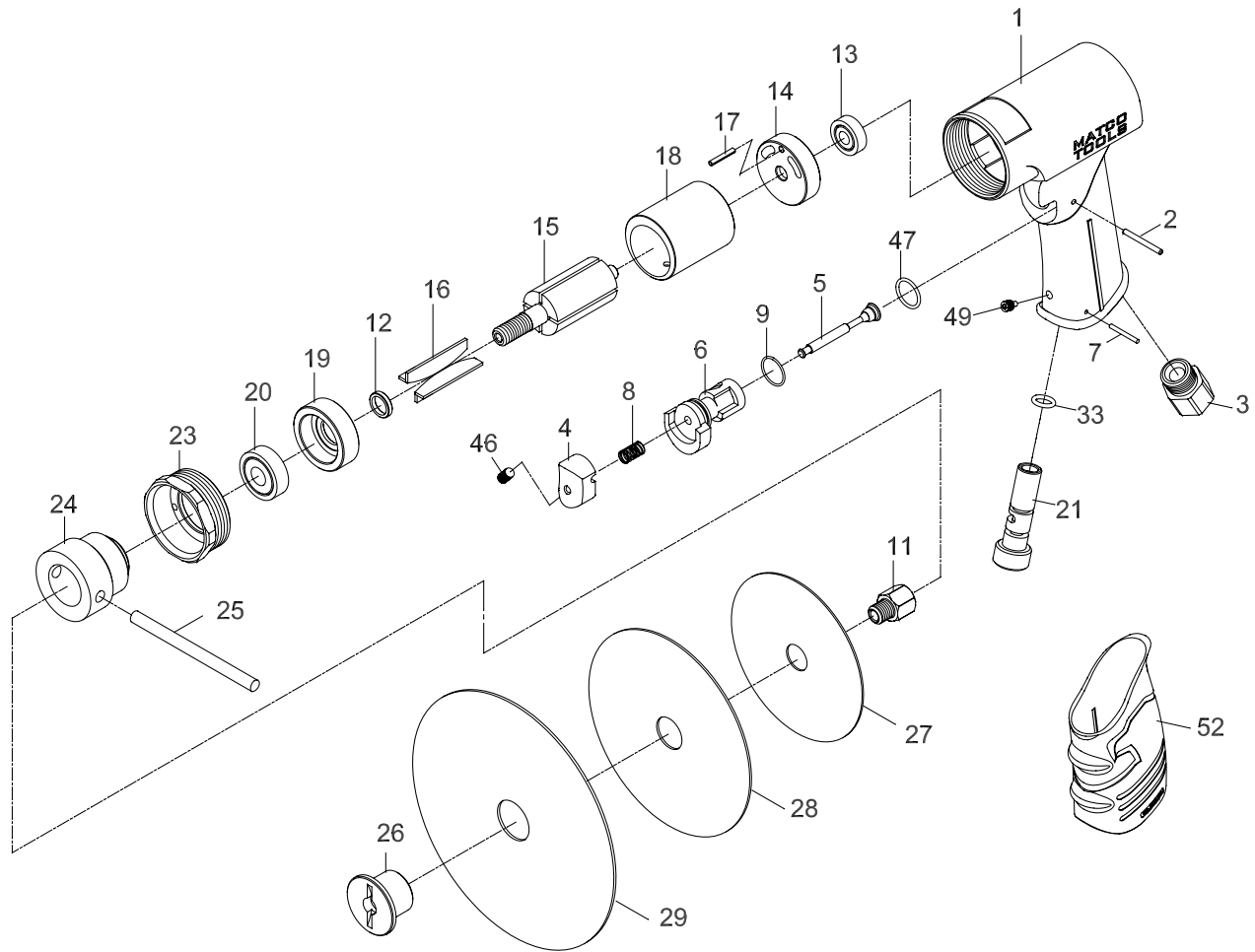
The foregoing obligation is Matco's sole liability under this or any implied warranty and under no circumstances shall Matco be liable for any incidental or consequential damages.

Note: Some states do not allow the exclusion or limitation of incidental or consequential damages so the above limitation or exclusion may not apply to you.

MATCO AIR COMMAND
Tool Repair SV
1330 Commerce Dr.
Stow, OH 44224
(800) 433-7098

DISCOUNT TOOL REPAIR
3433 Losee Rd. #1
North Las Vegas, NV 89030
(702) 657-6570

MT1788 5" High Speed Sander



ITEM	PART NO.	DESCRIPTION	QTY.
1	RS178801	Motor Housing (Incl. #52)	1
2	RS43009	Pin	1
3	RS178803	Air Inlet	1
4	RS79404N	Trigger	1
5	RS79405N	Valve Stem	1
6	RS178806	Valve Bushing	1
7	RS178807	Pin	1
8	RS79408N	Valve Spring	1
9	RS79409N	O-Ring	1
11	RS178811	Spindle	1
12	RS233A12	Rotor Bush	1
13	RS108A12	Ball Bearing	1
14	RS182714	Rear End Plate	1
15	RS178815	Rotor	1
16	RS178816	Rotor Blade	4
17	RS182717	Spring Pin	1

ITEM	PART NO.	DESCRIPTION	QTY.
18	RS182718	Cylinder	1
19	RS178819	Front End Plate	1
20	RS10920	Ball Bearing	1
21	RS178821	Air Regulator	1
23	RS178823	Clamp Nut	1
24	RS178824	Hub	1
25	RS178825	Rod	1
26	RS178826	Flange Nut	1
27	RS178827	Backing Pad - 3"	1
28	RS178828	Backing Pad - 4-1/2"	1
29	RS178829	Backing Pad - 5-1/2"	1
33	RS188409	O-Ring	1
46	RS79438N	Set Screw	1
47	RS79431N	O-Ring	1
49	RS178849	Screw Set	1
52	RS178852	Rubber Grip	1