

Operating Instructions • Warning Information • Parts Breakdown



MPTL192IW

19.2V Impact Wrench with LED Light

SPECIFICATIONS

Length	10.04"
Weight	6.6 lbs.
Battery Type	2.0ah Ni-Cd Slide on Style
No Load Speed	0-2,000 RPM
Blow per Minute	2,600
Charge Time	1 Hour
Maximum Torque	240 ft. lbs.

! WARNING

Some dust created by power sanding, sawing, grinding, drilling, and other construction activities contains chemicals known to cause cancer, birth defects or other reproductive harm. Some examples of these chemicals are:

- lead from lead-based paints,
- crystalline silica from bricks and cement and other masonry products, and
- arsenic and chromium from chemically-treated lumber.

Your risk from these exposures varies, depending on how often you do this type of work. To reduce your exposure to these chemicals: work in a well ventilated area, and work with approved safety equipment, such as those dust masks that are specially designed to filter out microscopic particles.

! WARNING



**ALWAYS READ
INSTRUCTIONS
BEFORE USING
POWER TOOLS**





**ALWAYS WEAR
SAFETY GOGGLES**

IMPORTANT SAFETY INSTRUCTIONS FOR CHARGER & BATTERY CARTRIDGE

WARNING

1. CAUTION: To reduce risk of injury, charge only Matco rechargeable batteries. Other types of batteries may burst causing personal injury and damage.
2. Before using battery charger, read all instructions and cautionary markings on batteries and chargers.
3. Do not expose charger to rain or snow.
4. To reduce the risk of damage to electric plug and cord, pull by plug rather than cord when disconnecting charger.
5. Use of an attachment not recommended or sold by the battery charger manufacturer may result in a risk of fire, electric shock, or injury to persons.
6. Make sure cord is located so it will not be stepped on, tripped on, tripped over, or otherwise subjected to damage or stress.
7. Do not operate charger with damaged cord or plug. Replace them immediately.
8. Do not operate charger if it has received a sharp blow, been dropped, or otherwise damaged in any way. Return tool to Tri-County Power Tool, Inc. for repair.
9. To reduce the risk of electric shock, unplug charger from outlet before attempting any maintenance or cleaning. Turning off controls will not reduce this risk.
10. Do not disassemble charger or battery cartridge. Return tool to Tri-County Power Tool, Inc. when repair is required. Incorrect reassembling may result in a risk of electric shock or fire.

SYMBOLS

V.....	Volts
A.....	Amperes
Hz.....	Hertz
W.....	Watts
	Alternating Current
	Direct Current

ADDITIONAL SAFETY RULES FOR CHARGER AND BATTERY CARTRIDGE

WARNING

1. Do not charge battery cartridge when temperature is below 10°C (50°F) or above 40°C (104°F).
2. Do not attempt to use a set-up transformer, an engine generator or DC power receptacle.
3. Do not allow anything to cover or clog the charger vents.
4. Always cover the battery terminals with the battery cover when the battery cartridge is not used.
5. Do not short the battery cartridge:
Do not touch the terminals with any conductive material.
Avoid storing battery cartridge in a container with other metal objects such as nails, coins, etc.
6. Do not store the machine and battery cartridge in locations where the temperature may reach or exceed 50°C (122°F).
7. Do not incinerate the battery cartridge even if it is severely damaged or completely worn out. The battery cartridge can explode in a fire.
8. Be careful not to drop, shake or strike the battery.
9. Do not charge inside a box or container of any kind. The battery must be placed in a well ventilated area during charging.

MPTL192IW

19.2V Impact Wrench with LED Light



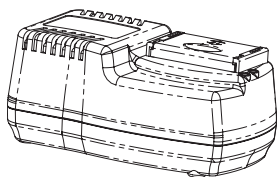
GENERAL OPERATIONAL PRECAUTIONS

! WARNING

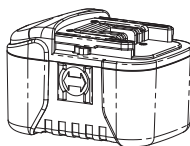
1. Do not use tools in damp or wet locations. Keep work area well lit and clean. Do not use tools in the presence of flammable liquids or gases.
2. Guard against electric shock. Avoid body contact with grounded surfaces while changing battery.
3. Store idle tools. When not in use, tool should be stored in a dry locked place, out of reach of children.
4. Do not force the tool. It works much safer at the rate for which it was intended.
5. Do not abuse the cord. Never yank the charger cord to disconnect it from the socket. Keep the cord away from heat, oil and sharp edges while changing the battery.
6. Check for alignment of moving parts, binding of moving parts, breakage of parts, mounting and any other condition that may affect its operation.
7. Any part that is damaged should be sent to Tri-County Power Tool, Inc. for repair.
8. To ensure the designed operational integrity of these power tools, do not remove installed cover or screws.
9. Do not wipe plastic parts with the following solvents: gasoline, thinner, benzene, carbon tetrachloride, alcohol, ammonia and chlorinated cleaning solvents which may damage and crack plastic parts. Instead, wipe plastic parts with a soft cloth lightly dampened with soapy water.

Standard Accessories

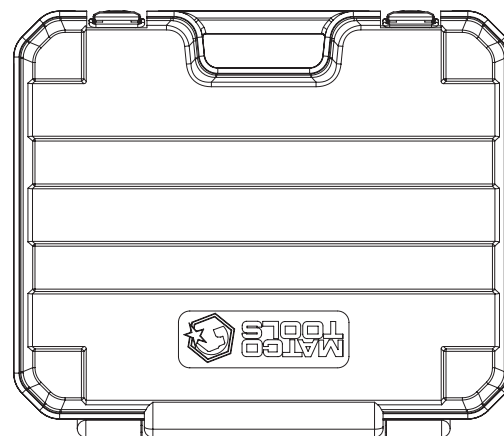
Charger



Battery



Blow Mold
Carrying Case

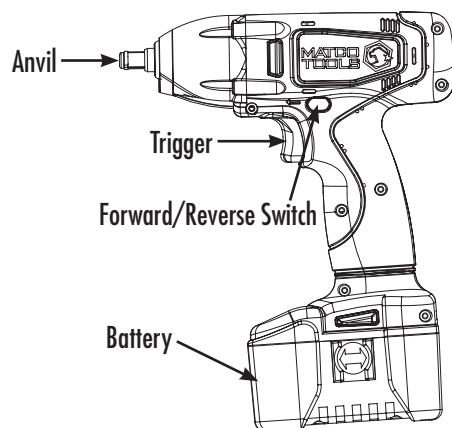


MPTL192IW

19.2V Impact Wrench with LED Light

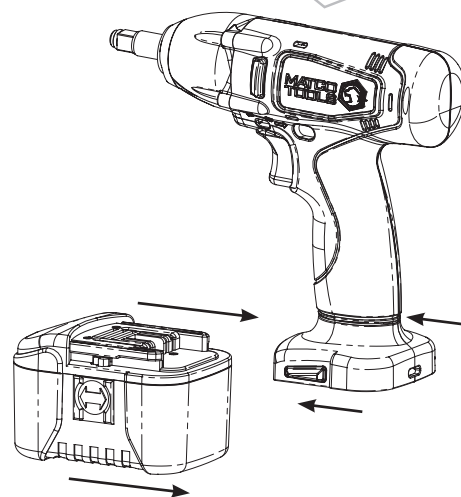


View the Major Parts



How to Remove/Insert the Battery

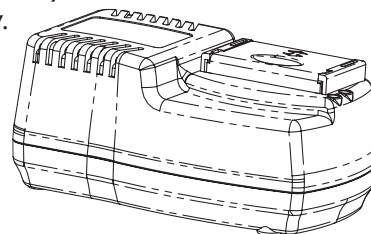
- Push the release buttons on both sides of the battery pack and slide forward toward the chuck to remove the battery from the unit.
- To reinstall the battery, slide the battery into the unit until the battery is fully engaged. This is confirmed when the battery “clicks” into place.



Charging the Battery

Do not charge the battery cartridge when temperature is below 10°C (50°F) or above 40°C (104°F).

1. While charging the cool battery (below 5°C) in the warm indoors, keep the battery in the room for one hour to warm up before starting the battery. A cool battery may not charge properly.
2. Unplug the charger once the battery is completely charged.
3. The charger should sit for one hour after charging continuously for 3 hours.
4. Do not use a generator for charging the battery.



The LED Light on the Charger Indicates:

Red light – Battery is charging

Green light – Battery fully charged and Trickle charging

!WARNING

Do not change the battery in the rain, snow or in a high temperature environment.

MPTL192IW

19.2V Impact Wrench with LED Light



Operating the Tool

Always be sure that the machine is switched off and the battery cartridge is removed before installing or removing the socket.

1. To install the socket, push the socket onto the anvil as far as it will go.
2. To remove the socket, simply pull the socket from the anvil.
3. To start the tool, simply pull the trigger. Release the trigger to stop.
4. For reversing the tool, use the forward/reverse switch on the drive unit. The directions of the rotation are also shown on the face of the switch.
5. Always check the direction of rotation before operation..
6. Use the forward/reverse switch only after the tool comes to a complete stop. Changing the direction of rotation before the tool stops may damage the gears.
7. Hold the tool firmly in place, make sure the socket is completely over the nut. Apply forward pressure to the tool to the extent that the socket will not slip off the nut. Pull the trigger to begin.

NOTE:

- Use the proper socket size for the nut that you intend to install or remove.
 - Hold the tool pointed straight at the nut. If you tighten the nut for a time longer than it needs, the nut or point of the driver socket may be overstressed, stripped, damaged, etc. When tightening a standard nut in a steel plate, the proper tightening torque can be obtained in an extremely short time (approx. 0.1-0.2 seconds).
 - Turn the tool off as soon as the impact sound is heard.
 - When tightening nut M6 or smaller, carefully adjust pressure on the switch trigger so that the nut is not damaged.
8. The tightening torque is affected by a wide variety of factors including the following.
- When the battery cartridge is discharged almost completely, voltage will drop and the tightening torque will be reduced.
 - Driver bit or socket bit:
Failure to use the correct size driver bit or socket bit will cause a reduction in the tightening torque.
 - Driving a bolt:
Even though the torque coefficient and the class of bolt are the same, the proper tightening torque will differ according to the diameter of the bolt.
9. Even if the diameter of the bolts are the same, the proper tightening torque will differ according to the torque coefficient, the class of the bolt and the bolt length.
10. The manner in which the tool is held or the driving position of the material to be tightened will affect the torque.

MPTL192IW

19.2V Impact Wrench with LED Light



Maintenance

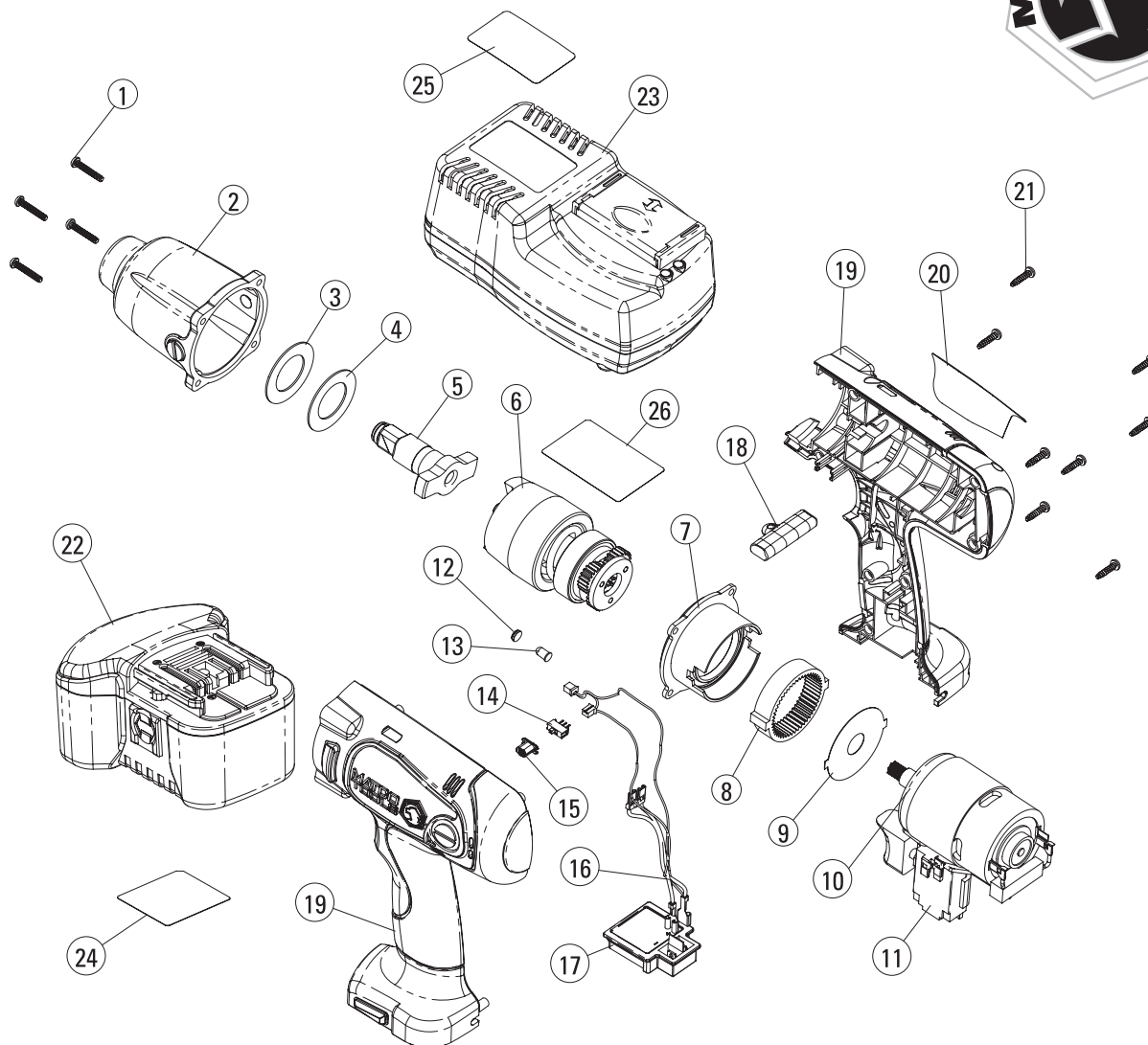
WARNING

Make sure that the impact wrench is turned off and the battery cartridge is removed before carrying out any work on the tool.

To maintain product safety and reliability, repairs, maintenance or adjustments should be carried out by an authorized service center.

MPTL192IW

19.2V Impact Wrench with LED Light



NO.	PARTS NO.	DESCRIPTION	QTY.
01	RS192W01	FRONT COVER SCREW	1
02	RS192W02	FRONT COVER ASSEMBLY	1
03	RS192W03	RUBBER WASHER	1
04	RS192W04	STEEL WASHER	1
05	RS192W05	FRONT SHAFT	1
06	RS192W06	REAR IMPACT ASSEMBLY	1
07	RS192W07	GEAR RING HOLDER	1
08	RS192W08	GEAR RING	1
09	RS192W09	WASHER	1
10	RS192W10	MOTOR ASSEMBLY	1
11	RS192W11	SWITCH	1
12	RS192W12	LENS	1
13	RS14417	LED	1
14	RS14415	LED SWITCH	1

NO.	PARTS NO.	DESCRIPTION	QTY.
15	RS14416	LED SWITCH BUTTON	1
16	RS19614	WIRE TERMINAL ASSEMBLY	1
17	RS192W17	BATTERY CONNECTOR ASSEMBLY	1
18	RS14410	FORWARD/REVERSE ROD	1
19	RS192W19	MAIN HOUSING	1
20	RS192W20	LABEL	1
21	RS144W21	HOUSING SCREW	8
22	MPT192B	BATTERY	1
23	MPT192C	CHARGER	1
24	RS192W24	BATTERY LABEL	1
25	RS192W25	UPPER LABEL OF CHARGER	1
26	RS192W26	LOWER LABEL OF CHARGER	1



Model# MPTL192IW Limited Warranty:

Matco warrants this tool for a period of 1 year from original purchase. We will repair any MPTL144IW covered under this warranty which proves to be defective in material or workmanship during the warranty period. In order to have your tool repaired, return the tool to Tri-County Power Tool, Inc. at the address listed below, freight prepaid. Please include your name and address, evidence of the purchase date, and description of the suspected defect. The tool will be inspected and if any part or parts are found to be defective in material or workmanship, the tool will be repaired free of charge and returned to you freight prepaid. This warranty does not cover damage to equipment or tools arising from alteration, abuse, misuse, damage and does not cover any repairs or replacement made by anyone other than Matco or Tri-County Power Tool, Inc. The foregoing obligation is Matco's sole liability under this or any implied warranty and under no circumstances shall we be liable for any incidental or consequential damages.

Note: Some states do not allow the exclusion or limitation of incidental or consequential damages, so the above limitation or exclusion may not apply to you.

This warranty gives you specific legal rights and you may also have other rights which vary from state to state.

TRI-COUNTY POWER TOOL, INC.
4597 Pearl Rd.
Cleveland, OH 44109
(866) 873-8278 (toll-free)
(216) 398-6120
(216) 398-6121 (fax)