



MLPJ35T

GATO DE BAJO PERFIL CAPACIDAD DE 3-1/2 TONELADAS
CRIC DE SERVICE 3-1/2 TONNES

3 1/2 TON SERVICE JACK



- Operating Instructions • Warning Information
- Parts Breakdown

SPECIFICATIONS

		MLPJ35T
Capacity	3.5 Ton	Overall Length 30.3"
Low Height	3.75"	Overall Width 14.2"
High Height	21.75"	Shipping Weight 110 lbs.
Handle Length	50"	



WARNING: This product can expose you to chemicals including nickel which is known to the State of California to cause cancer and birth defects or other reproductive harm. For more information go to www.P65Warnings.ca.gov.

Copyright © Professional Tool Products, 2018.
All rights reserved.

MLPJ35T 3-1/2 Ton Low Profile Jack

WARNING INFORMATION



This is the safety alert symbol. It is used to alert you to potential personal injury hazards. Obey all safety messages that follow this symbol to avoid possible injury or death.

WARNING

WARNING: Indicates a hazardous situation which, if not avoided, could result in death or serious injury.



IMPORTANT: READ THESE INSTRUCTIONS BEFORE OPERATING

BEFORE USING THIS DEVICE, READ THIS MANUAL COMPLETELY AND THOROUGHLY, UNDERSTAND ITS OPERATING PROCEDURES, SAFETY WARNINGS AND MAINTENANCE REQUIREMENTS.

It is the responsibility of the owner to make sure all personnel read this manual prior to using the device. It is also the responsibility of the device owner to keep this manual intact and in a convenient location for all to see and read. If the manual or product labels are lost or not legible, contact Matco for replacements. If the operator is not fluent in English, the product and safety instructions shall be read to and discussed with the operator in the operator's native language by the purchaser/owner or his designee, making sure that the operator comprehends its contents.

THE NATURE OF HAZARDOUS SITUATIONS

WARNING

The use of portable automotive lifting devices is subject to certain hazards that cannot be prevented by mechanical means, but only by the exercise of intelligence, care, and common sense. It is therefore essential to have owners and personnel involved in the use and operation of the equipment who are careful, competent, trained, and qualified in the safe operation of the equipment and its proper use. Examples of hazards are dropping, tipping or slipping of loads caused primarily by improperly securing loads, overloading, off-centered loads, use on other than hard level surfaces, and using equipment for a purpose for which it was not designed.

METHODS TO AVOID HAZARDOUS SITUATIONS

WARNING



- Read, study, understand & follow all instructions before using.



- Inspect the jack before each use. Do not use if damaged, altered, modified, in poor condition, leaking hydraulic fluid or unstable due to loose or missing components. Make corrections before using.
- Use only on a hard level surface free from obstructions so the jack is free to reposition itself during lifting and lowering operations.
- Lift only on areas of the vehicle as specified by the vehicle manufacturer.
- User and bystanders must wear eye protection that meets ANSI Z87.1 and OSHA standards.
- Do not use jack beyond its rated capacity. Do not shock load.
- **This is a lifting device only. Immediately after lifting, support the vehicle with jack stands capable of sustaining the load before working on the vehicle.**



- Center load on saddle. Be sure setup is stable before working on vehicle.
- Do not move or dolly the vehicle while on the jack.
- Do not use any materials that may serve as risers, spacers or extenders between the stock lifting saddle and the load.
- Do not use any adaptors that replace the stock lifting saddle unless approved or supplied by the jack manufacturer.
- Always lower the jack slowly and carefully.
- Do not use (or modify) this product for any other purpose than that for which it was designed without consulting the manufacturer's authorized representative.
- Failure to heed these warnings may result in serious or fatal personal injury and/or property damage.

CONSEQUENCES OF NOT AVOIDING HAZARDOUS SITUATIONS

WARNING

Failure to read this manual completely and thoroughly, failure to understand its OPERATING INSTRUCTIONS, SAFETY WARNINGS, MAINTENANCE INSTRUCTIONS and comply with them, and failure to comply with the METHODS TO AVOID HAZARDOUS SITUATIONS could cause accidents resulting in serious or fatal personal injury and/or property damage.

MLPJ35T 3-1/2 Ton Low Profile Jack

SETUP

Please refer to the exploded view drawing on page 6 in this manual in order to identify parts:

1. Remove the 2-piece handle from box. Insert narrow portion of top section (#26) into bottom section (#28) and secure with handle button (#27).
2. Grease the inside of the handle yoke (#24) and remove the handle set screw (#23) from the handle yoke (#24). Insert the handle all the way in the handle yoke (#24) until it engages the universal joint assembly (#29). Secure the handle to the handle yoke (#24) with the handle set screw (#23).
3. Air may become trapped in the hydraulic system during shipping and handling. Trapped air will affect the pumping performance of the jack. Pump the handle from its vertical position to its horizontal position to raise the lift arm. It should take 4 to 4-1/4 full pumps for the MLPJ35T to reach maximum height without a load. If the jack does not go to maximum height without a load in the number of required strokes, follow the instructions below:
 - a) Rotate the handle in a clockwise direction until tight. Rotate the handle in a counterclockwise direction two complete revolutions.
 - b) Pump the handle approximately 10-15 complete pump strokes.
 - c) Rotate the handle in a clockwise direction until tight. Proceed to pump the jack to maximum lift height.
 - d) Repeat steps "a" through "c" until all air has been purged from the system.

OPERATION



This is the safety alert symbol used for the OPERATING INSTRUCTIONS section of this manual to alert you to potential personal injury hazards. Obey all instructions to avoid possible injury or death. **IMPORTANT:** Before attempting to raise any vehicle, check vehicle service manual for recommended lifting surfaces.

OPERATION:

1. **To raise load:** Turn the handle in a clockwise direction until tight. Position the jack under the load. Proceed to pump the handle in order to raise the lift arm to the load. As the saddle at the end of the lift arm gets closer to the load, reposition the jack so the saddle will contact the load firmly and the load is centered on the saddle. Make sure the saddle is correctly positioned. Raise the load to the desired work height. Place jack stands of appropriate capacity at the vehicle manufacturer's recommended support areas that provide stable support for the raised vehicle. **DO NOT CRAWL UNDER VEHICLE WHILE LIFTING VEHICLE OR PLACING OR REMOVING THE JACK STANDS!** Once jack stands are positioned, turn the handle VERY SLOWLY in a counterclockwise direction. Lower the load to rest on the jack stands. Inspect the relationship between the jack stands and load to make sure the setup is stable and safe. If the setup is not stable or safe, follow the preceding steps until corrected.

2. **To lower load:** Follow the procedures mentioned in "To raise load" section of the OPERATING INSTRUCTIONS in order to raise the load off the jack stands. Once the load has cleared the jack stands, remove the stands from under the load and away from the work area. Turn handle very slowly in a counterclockwise direction until the load is completely lowered to the ground. Once the jack's lifting saddle has cleared the load, remove the jack from under the load. **DO NOT CRAWL UNDER VEHICLE WHILE LIFTING VEHICLE OR PLACING OR REMOVING THE JACK STANDS!**

CAUTION: Keep hands and feet away from the hinge mechanism of the jack.

OWNER/USER RESPONSIBILITY

The owner and/or user must have an understanding of the manufacturer's operating instructions and warnings before using this jack. Personnel involved in the use and operation of equipment shall be careful, competent, trained, and qualified in the safe operation of the equipment and its proper use when servicing motor vehicles and their components. Warning information should be emphasized and understood. If the operator is not fluent in English, the manufacturer's instructions and warning shall be read to and discussed with the operator in the operator's native language by the purchaser/owner, making sure that the operator comprehends its contents. Owner and/or user must study and maintain for future reference the manufacturers' instructions. Owner and/or user is responsible for keeping all warning labels and instruction manuals legible and intact. Replacement labels and literature are available from the manufacturer.

INSPECTION

Visual inspection should be made before each use of the jack, checking for leaking hydraulic fluid and damaged, loose or missing parts. Each jack must be inspected by a manufacturer's repair facility immediately if subjected to an abnormal load or shock. Any jack which appears to be damaged in any way, is found to be badly worn, or operates abnormally **MUST BE REMOVED FROM SERVICE** until necessary repairs are made by a manufacturer's authorized repair facility. It is recommended that an annual inspection of the jack be made by a manufacturer's authorized repair facility and that any defective parts, decals or warning labels be replaced with manufacturer's specified parts. A list of authorized repair facilities is available from the manufacturer.

PROPER STORAGE

It is recommended that the jack be stored in a dry location with all wheels touching the ground on a relatively level surface.

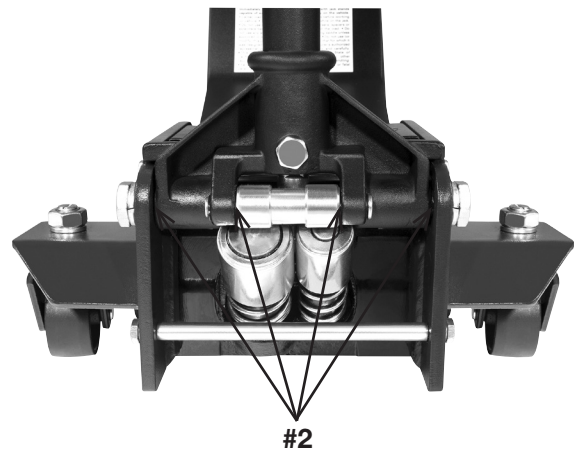
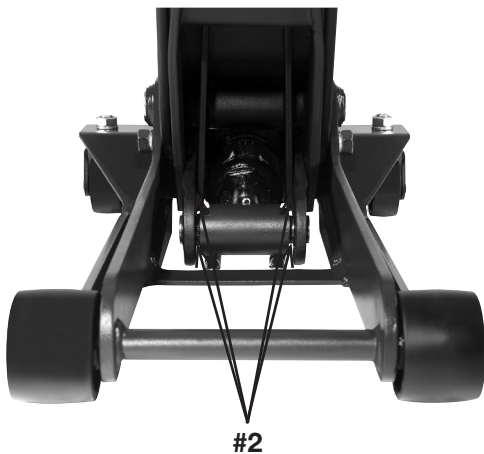
HYDRAULIC JACK MAINTENANCE GUIDE

IMPORTANT: Service jacks are designed for lifting purposes only; always support raised load with jack stands.

REGULAR MAINTENANCE

- Monthly or as necessary (depending on usage)
 - #1 Using a grease gun, add grease to grease fitting in the lift arm pivot shaft.
(Use a multi-purpose NLGI type grease only.)
 - #2 Lubricate all linkages and pivot points.
(Use white lithium spray grease only.)
 - #3 Remove handle; lubricate handle receptacle and handle end.
(Use white lithium spray grease only.)
 - #4 Lubricate both rear casters, bearings and both front wheels.
(Use white lithium spray grease only.)

Tighten all accessible hardware.



PREVENTIVE MAINTENANCE



This is the safety alert symbol used for the PREVENTATIVE MAINTENANCE section of this manual to alert you to potential personal injury hazards. Obey all instructions to avoid possible injury or death.

1. Always store the jack in a well protected area where it will not be exposed to inclement weather, corrosive vapors, abrasive dust, or any other harmful elements. The jack must be cleaned of water, snow, sand, grit, oil, grease and other foreign matter before using.
2. The jack must be lubricated periodically in order to prevent premature wearing of parts. A general purpose grease must be applied to caster wheels, front axle, elevator arm, handle base pivot bolts, release mechanism and all other bearing surfaces. Worn parts resulting from inadequate or no lubrication are not eligible for warranty consideration. See page 4 for lubrication instructions.
3. Every jack owner is responsible for keeping the jack labels clean and readable. Use a mild soap solution to wash external surfaces of the jack but not any moving hydraulic components.
4. Inspect the jack before each use. Do not use the jack if any component is cracked, broken, bent, shows sign of damage or leaks hydraulic fluid. Do not use the jack if it has loose or missing hardware or components, or is modified in any way. Take corrective action before using the jack again.

TROUBLESHOOTING

Important: Service jacks are self-contained devices used for lifting, but not sustaining, a partial vehicular load. In accordance with ASME-PASE Load Sustaining Test: "A load not less than the rated capacity... shall not lower more than 1/8" (3.18mm) in the first minute, nor a total of .1875" (4.76mm) in 10 minutes." Lowering within this range is considered normal operation and is NOT a warrantable defect.

PROBLEM	ACTION
1. Unit will not lift rated load.	Purge air from hydraulic system by following procedure under SETUP.
2. Unit will not sustain rated load or feels "spongy" under rated load.	Purge air from hydraulic system as above.
3. Unit will not lift to full height.	Purge air from hydraulic system as above.
4. Unit will not lower completely.	Check oil level. Make sure hydraulic system is not overfilled.
5. Handle tends to raise up while the unit is under rated load.	Pump the handle rapidly several times to push oil past ball valves in power unit.
6. Unit still does not operate.	Contact customer service.

WARRANTY NOTICE

Hydraulic Warranty Policy

Matco® shop equipment and tools, excluding accessories, are warranted against defects in materials or workmanship for a period of 1 year from original purchase. We will repair or replace at our option any defective part or unit which proves to be defective in material or workmanship within this warranty plan. This warranty does not cover damage to equipment or tools arising from alteration, abuse or misuse, and does not cover any repairs or replacement made by anyone other than Matco or its authorized service centers.

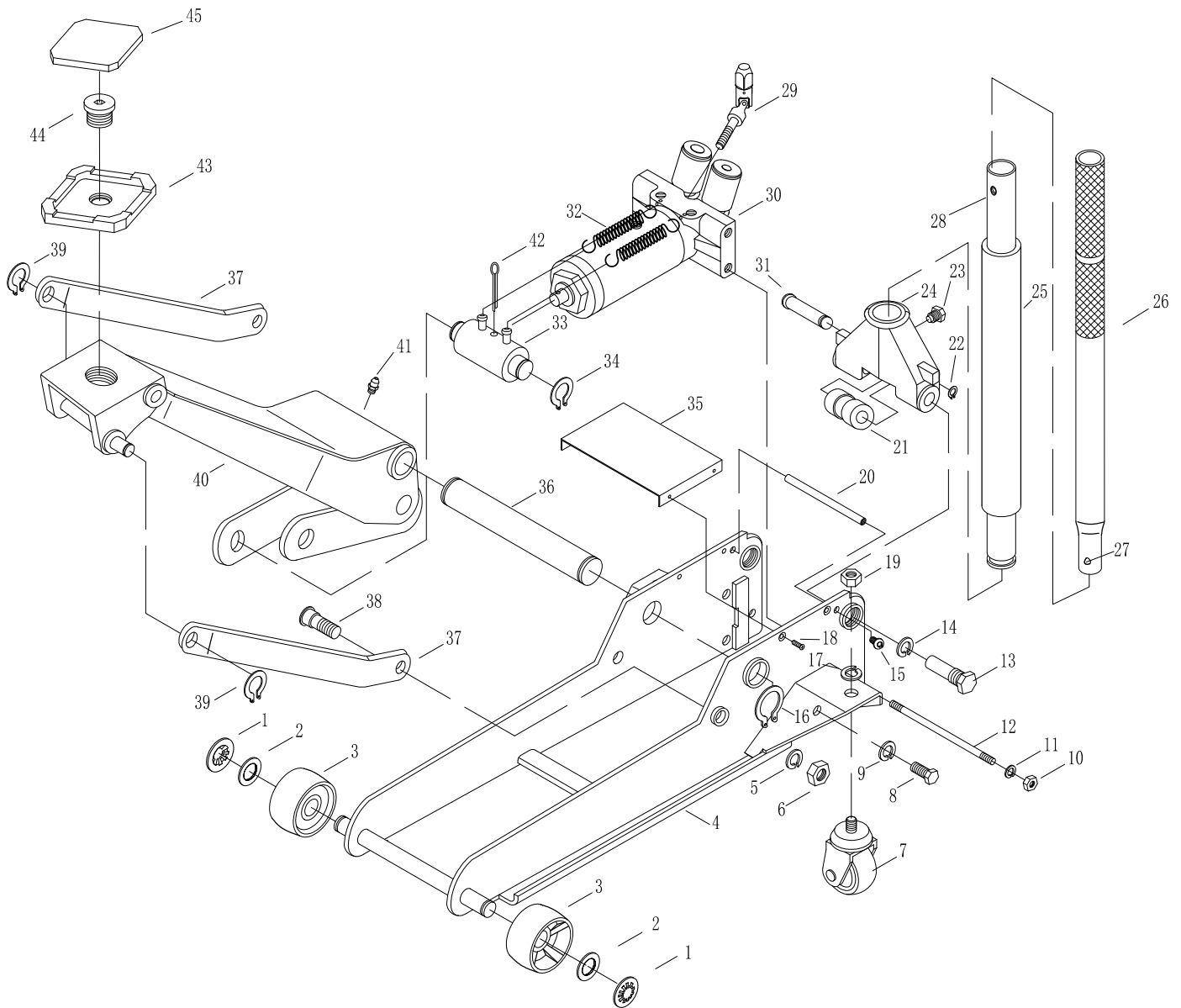
The foregoing obligation is Matco Tools sole liability under this or any implied warranty and under no circumstances shall we be liable for any incidental or consequential damages.

NOTE: Some states do not allow the exclusion or limitation of incidental or consequential damages, so the above limitation or exclusion may not apply to you.

Return equipment or parts to Matco Tools, or an authorized service center, transportation prepaid. Be certain to include your name and address, evidence of the purchase date, and description of the suspected defect.

If you have any questions about warranty service, please write to Matco Tools, Stow, OH 44224. This warranty gives you specific legal rights and you may also have other rights which vary from state to state.

MLPJ35T 3-1/2 Ton Low Profile Jack



INDEX

NO.	PART NO.	DESCRIPTION	QTY
1	RS35T01	Star Washer 20	2
2	RS35T02	Flat Washer 20	2
3	RS35B03A	Front Wheel	2
4		Jack Frame	1
5	RS35T08	Spring Washer 16 (incl #6)	2
6		Nut M16 (included w/ #5)	2
7	RS35B10	Rear Caster Assembly (incl #17, #19)	2
8		Bolt M12X22	4
9		Spring Washer 12	4
10		Nut M10 (included w/ #12)	2
11		Spring Washer 10 (included w/ #12)	2
12	RS3503912	Lower Cross Bar Assembly (incl #10, #11)	1
13	RS35T14	Handle Socket Bolt	2
14		Spring Washer18	2
15		Bolt M8X20	2
16		Retainer Ring 30	2
17		Spring Washer 16 (included w/ #7)	2
18		Bolt M5X16	4
19		Nut M16 (included w/ #7)	2
20	RS35023	Upper Cross Bar	1
21		Roller	1
22		Retainer Ring 12	1
23	RS35T13	Set Screw-Handle	1

INDEX

NO.	PART NO.	DESCRIPTION	QTY
24	RS35011MC	Handle Yoke	1
25	RS35T20NL	Handle Bumper	1
26	RS35024	Upper Handle	1
27	RS35THB	Handle Button	1
28	RS35025	Lower Handle	1
29	RS35T18	U-Joint Assembly	1
30	RS350LR23	Power Unit	1
31		Roller Pin	1
32	RS35T19	Return Spring	2
33	RS35T06BK	Block Linkage	1
34		Retainer Ring 25	2
35	RS3503935	Cover Plate	1
36		Lift Arm Axle	1
37		Guide Arm	2
38		Guide Arm Bolt	2
39	RS35T04	Retainer Ring 16	2
40		Lift Arm	1
41	RS35T12	Grease Fitting	1
42		Cotter Pin	1
43	RS35039BR	Saddle	1
44	RS35018	Saddle Screw	1
45	RS35045	Rubber Saddle Pad	1
	RSMLPJ35TPLK	Product Label Kit	1

Only items identified by part number are available for purchase.



MLPJ35T

**GATO DE BAJO PERFIL CAPACIDAD DE 3-1/2 TONELADAS
CRIC DE SERVICE 3-1/2 TONNES**

3 1/2 TON SERVICE JACK



• Instrucciones de Operación • Información de Advertencia

ESPECIFICACIONES

		MLPJ35T	
Capacidad.....	3.5 Ton	Longitud global	30.3"
Altura mínima	3.75"	Anchura global	14.2"
Altura máxima.....	21.75"	Peso de embarque.....	110 lbs.
Longitud del mango	50"		



ADVERTENCIA: Este producto le podrá exponer a ciertos químicos, para incluir el níquel, conocidos en el Estado de California por ocasionar cáncer y defectos congénitos u otros daños a la reproducción. Para mayores informes, visite: www.P65Warnings.ca.gov.

Copyright © Professional Tool Products, 2018
Todos los derechos reservados