

OPERATING INSTRUCTIONS AND PARTS BREAKDOWN

!WARNING



DO NOT OVERLOAD. OVERLOADING CAN CAUSE DAMAGE TO, OR FAILURE OF THE STAND.

THIS STAND IS DESIGNED FOR USE ONLY ON HARD LEVEL SURFACES CAPABLE OF SUPPORTING THE LOAD. USE ON OTHER THAN HARD LEVEL SURFACES CAN RESULT IN STAND INSTABILITY AND TIPPING OF LOAD.

LOCK THE MOUNTING-PLATE ROTATING MECHANISM BEFORE APPLYING A LOAD. RELEASE ROTATIONAL LOCKING DEVICE SLOWLY AND CAREFULLY.

ALWAYS USE HIGH STRENGTH SAE GRADE 8 BOLTS FOR ENGINE MOUNTING BOLTS.

MAKE SURE WIDEST SET OF MOUNTING HEAD FINGERS ARE NEAREST THE GROUND WHEN MOUNTING AN ENGINE TO THE STAND.

ALWAYS BE SURE THAT THE LOAD IS CENTERED AND SECURED TO THE MOUNTING PLATE. OFF-CENTER LOADS MAY MAKE THE LOAD AND HANDLE ROTATE IN EITHER DIRECTION WHEN THE ROTATIONAL LOCKING DEVICE IS RELEASED.

NEVER LOOSEN MOUNTING BOLTS UNLESS ENGINE IS SUPPORTED BY A CRANE OR HOIST.

DO NOT USE STAND TO DOLLY OR TRANSPORT ENGINES.

NO ALTERATIONS TO THE STAND OR ADAPTERS SHALL BE MADE.

DO NOT ROTATE MOTOR UNLESS REAR LEGS ARE SECURED FROM TIPPING.

READ, STUDY AND UNDERSTAND ALL INSTRUCTIONS BEFORE OPERATING.

FAILURE TO HEED THESE WARNINGS MAY RESULT IN LOSS OF LOAD, DAMAGE TO STANDS, AND/OR FAILURE RESULTING IN PROPERTY DAMAGE, PERSONAL OR FATAL INJURY.

OWNER/USER RESPONSIBILITY

The owner and/or user must have a thorough understanding of the manufacturer's operating instructions and warnings before using this engine stand. Personnel involved in the use and operation of equipment shall be careful, competent, trained, and qualified in the safe operation of the equipment and its proper use when servicing motor vehicles and their components. Warning information should be emphasized and understood. If the operator is not fluent in English, the manufacturer's instructions and warnings shall be read to and discussed with the operator in the operator's native language by the purchaser/owner, making sure that the operator comprehends its contents.

Owner and/or user must study and maintain for future reference the manufacturer's instructions. Owner and/or user is responsible for keeping all warning labels and instruction manuals legible and intact. Replacement labels and literature are available from the manufacturer.

MAINTENANCE

Apply motor oil to support base wheels and casters. Apply chassis grease to mounting head hub. Rotate head to distribute grease. Keep both the grease fitting and the gear teeth well lubricated.

!WARNING

DO NOT CRAWL UNDER ENGINE OR PLACE ANY PART OF YOUR BODY UNDER ENGINE AT ANY TIME DURING MOUNTING OF ENGINE, USE OF STAND, OR REMOVAL OF ENGINE.

!WARNING

REFER TO ENGINE SERVICE MANUAL FOR CORRECT LIFTING POINTS, MOUNTING POINTS AND MOUNTING BOLTS! MOUNTING BOLTS SHOULD BE TORQUED AT APPROPRIATE AMOUNT TO MAINTAIN LOAD.

FEATURES

- ▶ 63-1 Worm Gear Ratio Allows Easy Rotation of Engine
- ▶ Self-Locking in Any Position
- ▶ Breaks Down for Easy Storage

ASSEMBLY INSTRUCTIONS

Assemble as shown in the diagram. First, install the casters (5 & 16) to the front and rear axles (2 & 18) using the hardware items 3, 4 & 6, being sure to insert bolts from bottom side of caster plate. Then, attach the center beam assembly (9) to the axle assembly using hardware items 1, 10, 11 & 17. Next, attach one end of brace, item 19, to the center beam using hardware items 1, 10, & 11. Make sure position of brace is as shown in diagram.

Place post (27) with gear box assembly onto base assembly as follows. Stand the post on the base and attach by passing bolt, item 1, through middle hole in the base bracket and the hex shaped mount welded to the bottom of the post. Then pass pin, item 7, through the upper hole in the base bracket and just in front of the post. Secure pin with latch provided. Now, insert pin, item 7, through the rear hole, including both brackets and secure with latch provided. The last step is to attach the end of the brace, item 19, to the post using pin and latch, item 7. To fold engine stand, simply remove the three pins, fold brace forward, and then fold post forward. The pins can be stored in open holes.

INSPECTION

Visual inspection should be made before each use of the engine stand, checking for damaged, loose or missing parts. Each stand must be inspected by a manufacturer’s repair facility immediately, if accidentally subjected to an abnormal load or shock. Any stand which appears to be damaged in any way, found to be badly worn, or operates abnormally **MUST BE REMOVED FROM SERVICE** until necessary repairs are made by a manufacturer’s authorized repair facility. It is recommended that an annual inspection of the stand be made by a manufacturer’s authorized repair facility and that any defective parts, decals or warning labels be replaced with manufacturer’s specified parts. A list of authorized repair facilities is available from the manufacturer.

OPERATING INSTRUCTIONS

NOTE: Do not mount engine to mounting plate unless all three pins, item 7, are in place and secured with latches provided according to Assembly Instructions.

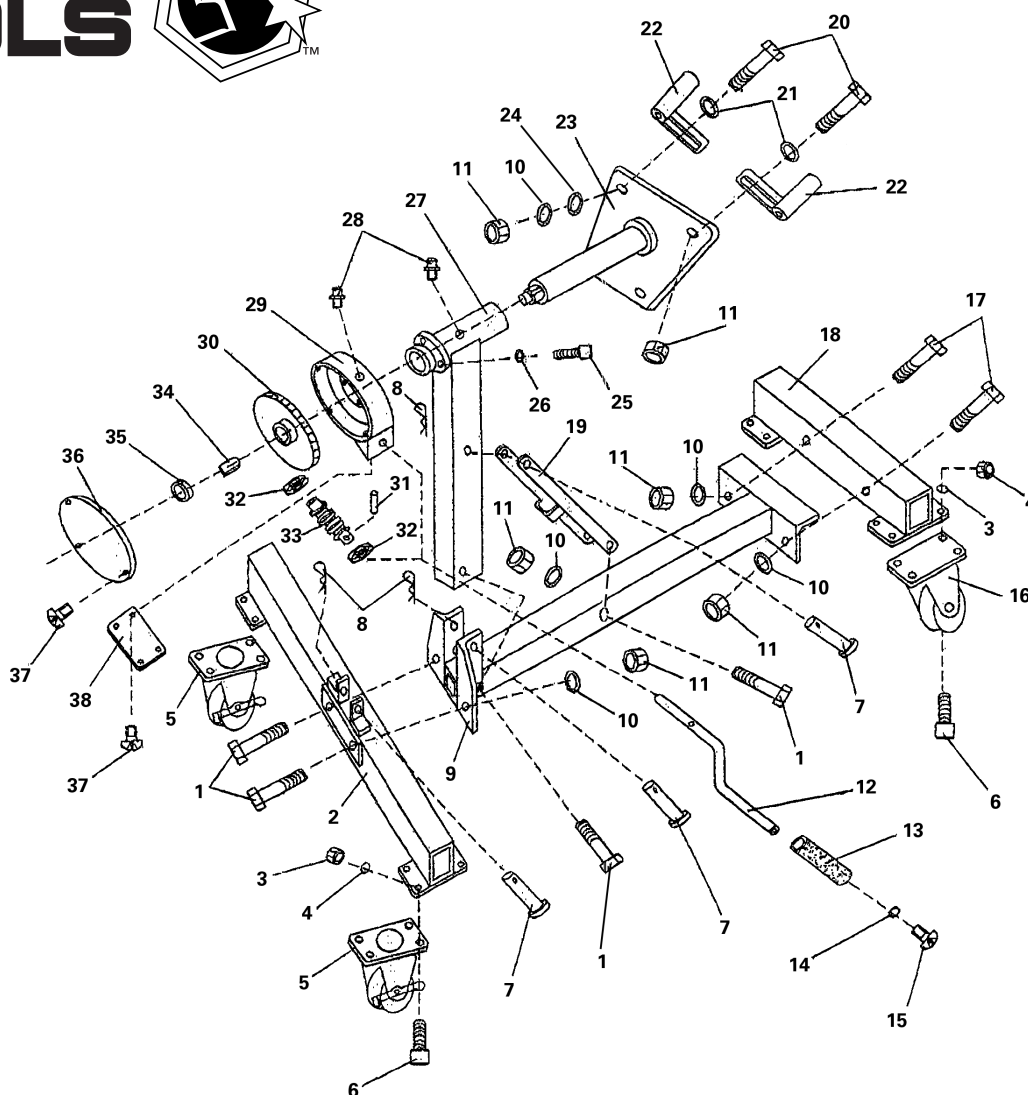
Drain oil and coolant and remove flywheel from engine before mounting. Mount engine as directed in procedures which follow. Refer to engine service manuals and technical bulletins when mounting engines. Lift engine (block) with crane or hoist until even with head of engine stand. Bolt through adjustable fingers to back of block at bell housing

SPECIFICATIONS

| | |
|-----------------------------------|-----------|
| Capacity | 1000 Lbs. |
| Length..... | 37" |
| Width at front..... | 20.5" |
| Width at rear..... | 36.5" |
| Height (assembled)..... | 36" |
| Height (in folded position) | 16.4" |
| Shipping Wt. | 92 lbs. |

mounting holes. Fasten securely to mounting plate. Slowly lower crane or hoist so that the engine stand supports full weight of engine. To check engine balance, carefully loosen hex bolt at back of rotating head, making sure stand is secured from tipping, and turn handle to rotate engine. If balance is not satisfactory, rotate engine to its original position and raise with crane or hoist just enough to take weight off the stand. Loosen bolts on adjustable fingers and realign so that weight is evenly distributed. Tighten all bolts securely and recheck balance. To remove an engine from stand, attach a crane or hoist and raise engine just enough to take engine weight off stand. Carefully remove bolts attaching fingers to engine. Be aware that there will be a slight movement of stand as total engine weight is transferred to crane.

The engine may be rotated by turning the worm crank. Grease before each use. The stand can be folded down for easy storage and transportation by removing 3 pins, item 7.



| ITEM NO. | PART NO. | DESCRIPTION | QTY |
|----------|------------|---------------------------------|-----|
| 1 | ** | Mounting Plate Bolt M12x70 | 4 |
| 2 | | Rear Axle Assembly | 1 |
| 3 | ** | M8 Nyloc Nut | 16 |
| 4 | ** | M8 Washer | 16 |
| 5 | RS8300G16 | 3.5" Swivel Caster with Locking | 2 |
| 6 | ** | M8x20 Allen Head Bolt | 16 |
| 7 | ** | Pin | 3 |
| 8 | ** | Clip | 3 |
| 9 | | Center Beam Assembly | 1 |
| 10 | ** | M12 Washer | 10 |
| 11 | ** | M12 Nut | 10 |
| 12 | * | Worm Crank | 1 |
| 13 | * | Grip | 1 |
| 14 | * | M5 Washer | 1 |
| 15 | * | M5x10 Bolt | 1 |
| 16 | RS8300G04 | 3" Fixed Caster | 2 |
| 17 | ** | M12x65 Bolt | 2 |
| 18 | | Front Axle Assembly | 1 |
| 19 | RS8300GA19 | Brace | 1 |

| ITEM NO. | PART NO. | DESCRIPTION | QTY |
|----------|------------|---------------------------------|-----|
| 20 | ** | Mounting Plate Bolt M12x60 | 4 |
| 21 | ** | M12 Washer (4mm) | 4 |
| 22 | RS8300G26 | Finger | 4 |
| 23 | RS8300GA23 | Mounting Plate - Shaft Assembly | 1 |
| 24 | ** | 12 Lock Washer | 4 |
| 25 | ** | M8x25 Bolt | 3 |
| 26 | ** | M8 Washer | 3 |
| 27 | | Post | 1 |
| 28 | RS8300GA27 | Grease Fitting | 2 |
| 29 | * | Worm Box | 1 |
| 30 | * | Worm Gear | 1 |
| 31 | * | Pin | 1 |
| 32 | * | Bearing Assembly | 2 |
| 33 | * | Worm | 1 |
| 34 | * | Worm Gear Pin | 1 |
| 35 | * | M25 Nut | 1 |
| 36 | * | Worm Box Cover (upper) | 1 |
| 37 | * | M4x6 Bolt | 7 |
| 38 | * | Worm Box Cover (lower) | 1 |

* Available only in Worm Box Assembly, Part #RS8300GAWB

** Available only in Bolt Kit, Part #RS8300GABK

Only items identified by part number are available separately.



LIMITED WARRANTY

Matco equipment is warranted against defects in materials or workmanship for a period of 1 year from original purchase. We will repair or replace at our option any defective part or unit which proves to be defective in material or workmanship within this warranty plan. This warranty does not cover damage to equipment or tools arising from alteration, abuse, misuse, damage and does not cover any repairs or replacement made by anyone other than Matco or its authorized service centers.

The foregoing obligation is Matco's sole liability under this or any implied warranty and under no circumstances shall we be liable for any incidental or consequential damages.

NOTE: Some states do not allow the exclusion or limitation of incidental or consequential damages, so the above limitation or exclusion may not apply to you.

Return equipment or parts to your Matco dealer transportation prepaid. Be certain to include your name and address, evidence of the purchase date, and description of the suspected defect.

This warranty gives you specific legal rights and you may also have other rights which vary from state to state.