

### RULES FOR SAFE OPERATION

**IMPORTANT:** Sometimes during shipment and handling, air gets into the hydraulic system, causing poor lifting performance. Purge any air from the system by simply opening Release Valve (turn handle counter-clockwise) and operate pump handle rapidly several times.

#### Positioning & Raising Jack

1. Close Release Valve **TIGHTLY** by turning handle clockwise.
2. Position jack under load so that saddle will contact load firmly and is centered so it cannot slip.
3. Operate jack handle until saddle approaches contact with load. Carefully check to see that saddle is correctly positioned.
4. Raise load to desired height. Transfer to Jack Stands if load is to be held up for an extended period.

#### Lowering the Jack

Open Release Valve **VERY SLOWLY** by turning handle counter-clockwise.

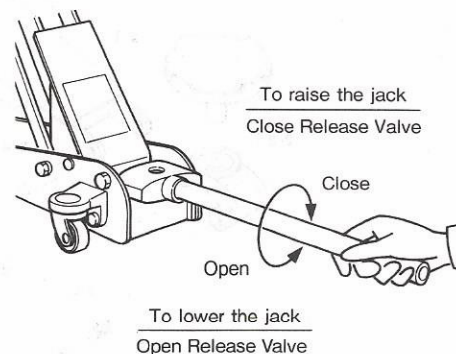


Fig 1

### PRODUCT WARRANTY

Limited warranty: automotive, hydraulic products (the products) of Matco Tools are warranted to be free from defects in material and workmanship for 90 days from the date of purchase.

This warranty applies only to products purchased new from Matco or its authorized distributors. This warranty is void for products which have been damaged by accident, abuse, modification, unreasonable use, neglect, or repair by someone other than a Matco-authorized service representative. This warranty does not apply to production related use. If a Matco hydraulic product proves defective in material and workmanship within 90 days after purchase, return the product to any Matco-authorized distributor or authorized service center, transportation prepaid, include your name and address with adequate proof of date of purchase and a short explanation of failure. Matco will, at its option, repair, or replace defective products free of charge. Repairs or replacements are warranted as described above for the remainder of the original warranty period. Matco's sole liability and user's exclusive remedy under this warranty is limited to repair or replacement of the defective product.

There are no other warranties expressed or implied, verbal or otherwise, and Matco shall not be liable for incidental, consequential or special damages or any other damages, costs, or expenses relating to the failure of product.

Matco's only liability is the cost or expense of repair or replacement as described above.

### OPERATING INSTRUCTIONS

#### "WARNING"

1. THIS JACK IS DESIGNED FOR LIFTING PURPOSES ONLY. NOT FOR SUPPORTING LOAD.
2. AFTER LIFTING ALWAYS USE AXLE STANDS, NEVER WORK UNDER A LOAD UNLESS IT IS SUPPORTED BY AXLE STANDS.
3. ALWAYS PLACE JACK ON LEVEL, SOLID GROUND BEFORE OPERATING.
4. WHEN LIFTING THE VEHICLE, BE SURE TO PLACE THE AXLE ON THE CENTER OF THE JACK SADDLE.
5. NEVER MOVE THE JACK WHILE IT IS SUPPORTING THE VEHICLE.
6. WHEN LOWERING THE VEHICLE, MAKE SURE NOBODY IS AROUND OR UNDER THE LIFTED VEHICLE AND SLOWLY LOWER THE VEHICLE WITH SPECIAL ATTENTION TO JACK SADDLE.
7. SAFETY VALVE IS PROPERLY ADJUSTED AT FACTORY AND NO FURTHER ADJUSTMENT IS NECESSARY.
8. WHEN NOT IN USE, ALWAYS KEEP THE JACK HANDLE STRAIGHT UP AND LOCKED SO IT WILL NOT FALL.
9. DO NOT ATTEMPT TO LIFT BY THE HANDLE OR SADDLE ASSEMBLY. DO NOT LIFT IN A MANNER THAT MAY CAUSE PERSONAL INJURY TO YOU OR TO OTHERS.
10. ALL OPERATORS OF THIS EQUIPMENT MUST BE FULLY TRAINED AND HAVE FULL ACCESS TO INFORMATION REGARDING SAFETY AND USE.

### LUBRICATION

- 1) Be sure to oil arrow marked sections occasionally, at least one or two times per month. (Fig 2)
- 2) Add grease to Upper Arm Grease Fitting every 3 month (Fig 3)

### MAINTENANCE PROCEDURES

#### 1. Maintaining Oil Level

**IMPORTANT:** When adding or replacing oil, always use a good grade Hydraulic Jack Oil (or transmission oil, turbine oil, etc.). Avoid mixing types of oil. DO NOT use Brake Fluid, Alcohol, Glycerine, detergent motor oil, or dirty oil. Improper fluid can cause serious internal damage to Jack.

#### 2. Preventing Rust

Check Ram & Plunger every 3 months for any signs of rust or corrosion. Clean as needed and wipe with an oily cloth. When not using the jack, always keep the Saddle & Pump Plunger all the way down.

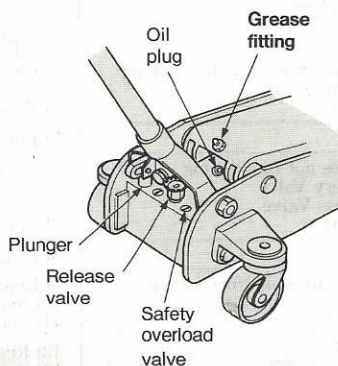


Fig 3

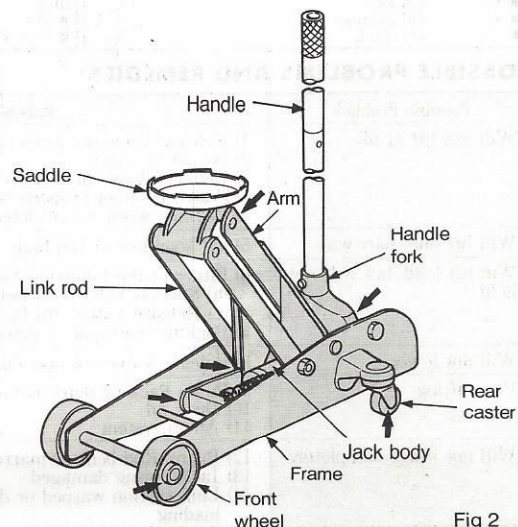
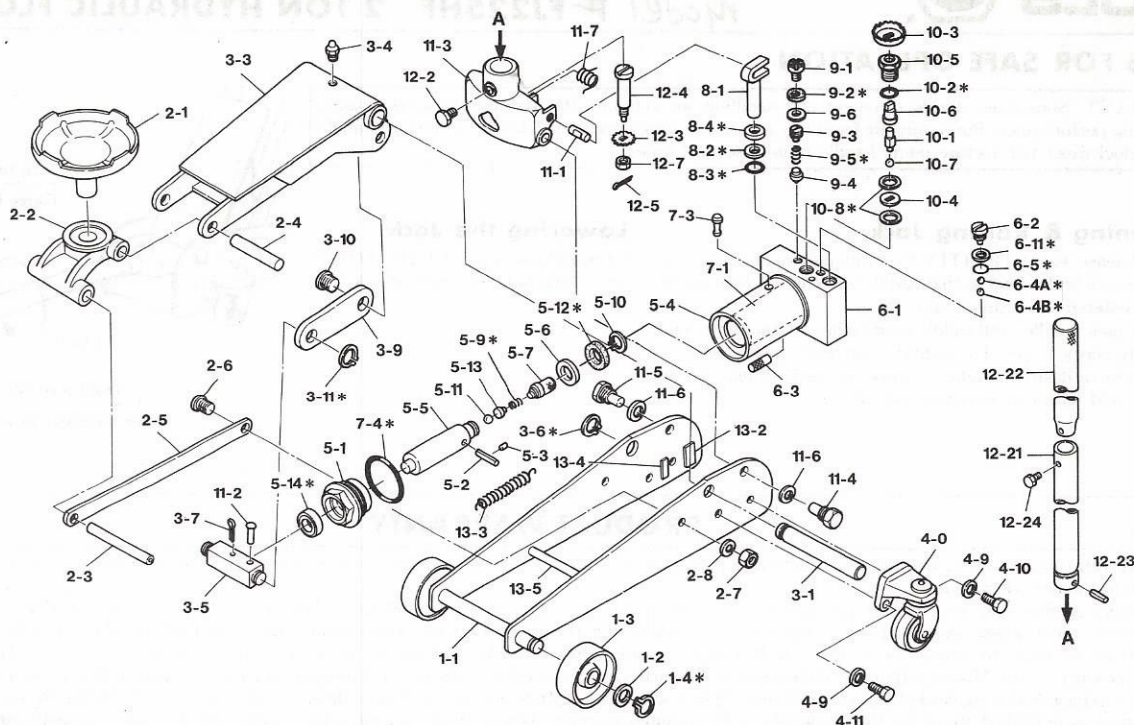


Fig 2



## FJ225HF 2 TON HYDRAULIC FLOOR JACK



Part No.	Description	No. Req'd	Part No.	Description	No. Req'd	Part No.	Description	No. Req'd
1-1	Front Wheel Shaft	1	5-1	Tank Nut	1	●10-3	Release Valve Gear	1
1-2	Washer	2	5-2	By-pass Bar	1	●10-5	Release Valve Lock Nut	1
1-3	Front Wheel	2	5-3	By-pass Rod	1	●10-6	Release Valve Connecting Rod	1
1-4 *	Snap Ring	2	5-5	Piston Rod	1	●10-8 *	Copper Packing	2
2-1	Saddle	1	5-6	Piston Packing Retainer	1	10-4	Collar	1
2-3	Link Rod Pin (A)	1	5-7	By-pass Screw	1	10-7	Steel Ball	1
2-5	Link Rod	2	5-9 *	Spring	1			
2-6	Link Pin (B)	2	5-10	Snap Ring	1	11-0	Handle Fork Ass'y	1
2-7	Nut	2	5-11	Steel Ball	1	●11-3	Handle Fork	1
2-8	Spring Washer	2	5-12 *	U-type Packing	1	●12-2	Handle Set Screw	1
3-0	Arm Ass'y	1	5-13	Spring Retainer	1	●12-3	Release Valve Gear	1
● 2-2	Saddle Base	1	5-14 *	Oil Seal	1	●12-4	Release Valve Connecting Bar	1
● 2-4	Arm Pin (A)	1	6-2	Bolt	1	●12-5	Cotter Pin	1
● 3-3	Arm	1	6-4A *	Steel Ball	1	●12-7	Nut	1
● 3-4	Grease Nipple	1	6-4B *	Steel Ball	1	11-1	Plunger Connecting Pin	1
● 3-9	Link	2	6-5 *	O-Ring	1	11-2	Rivet	1
● 3-10	Pin	2	6-11	Back-Up Ring	1	11-4	Handle Shaft (A)	1
3-1	Arm Pin	1	7-3	Oil Fill Plug	1	11-5	Handle Shaft (B)	1
3-5	Piston Connecting Joint	1	7-4 *	O-Ring	1	11-6	Spring Washer	2
3-6 *	Snap Ring	1	8-1	Pump Plunger	1	11-7	Spring	1
3-7	Cotter Pin	1	8-2 *	Back-Up Ring	1	12-0	Handle Ass'y	1
3-11 *	Snap Ring	2	8-3 *	O-Ring	1	●12-21	Lower Handle	1
4-0	Rear Caster Ass'y	2	8-4 *	Oil Seal	1	●12-22	Upper Handle	1
4-9	Spring Washer	4	9-1	Safety Valve Cap Plug	1	●12-23	Spring Pin	1
4-10	Bolt	2	9-2 *	Rubber Packing	1	●12-24	Handle Connecting Bolt	1
4-11	Bolt	2	9-3	Retainer	1	13-1	Frame	1
5-0	Oil Box Ass'y	1	9-4	Safety Valve	1	13-2	Oil Box Stopper	2
● 5-4	Cylinder	1	9-5 *	Spring	1	13-3	Spring	1
● 6-1	Oil Box	1	9-6	Packing	1	13-4	Oil Box Stopper	2
● 6-3	Oil Strainer	1	10-0	Release Valve Ass'y	1	13-5	Stopper	1
● 7-1	Oil Tank	1	●10-1	Release Valve	1			
			●10-2 *	O-Ring	1			
							* REPAIR KIT	20 pcs

## POSSIBLE PROBLEMS AND REMEDIES

Possible Problem	Possible Cause	Remedy
Will not lift at all	1) Release Valve not properly closed 2) No oil in system 3) Delivery Valve and/or By-Pass Valve malfunctioning (Valve Ball not properly seated) 4) Packing worn out or defective	1) Tighten securely 2) Fill to prescribed level 3) Clean to remove dirt or foreign matter and replace oil 4) Replace Packing
Will lift only part way	5) Oil level low or too high	5) Fill or take excess oil out
Will lift load, but will not hold	6) Either of the following Valves not functioning (a) Suction Valve (b) Delivery Valve (c) Release Valve (d) By-Pass Valve 7) Packing worn out or defective	6) Inspect Valves-clean and adjust seat surface 7) Replace Packing
Will not lower	8) Release Valve not opening	8) Clean and adjust Release Valve
Poor lifting	9) Pump Packing defective or Valves malfunctioning 10) Dirty oil 11) Air in system	9) Replace Packings and/or clean Valves 10) Replace oil 11) Purge air from system
Will not lower completely	12) Piston Rod bent or marred 13) Jack Spring damaged 14) Link section warped or deformed due to possible over-loading	12) Replace Piston Rod 13) Replace Spring 14) Replace the parts