

**PARTS LIST AND INSTRUCTIONS FOR J-1½ HYDRAULIC CURB JACK
(1½ TON CAPACITY) MODEL NO. P-916**

CAUTION—Before using jack, open release valve approx. two turns. Pump handle six or eight full strokes. This will clear any air that may have entered oil channels caused by rough handling in shipping. Then close the release valve and pump handle until rest plate is raised its full height without load. Then give several more handle strokes to insure oil distribution throughout. Open release valve and allow jack to lower. Jack is now ready for use. The above is only necessary when jack is new.

HOW JACK OPERATES. To RAISE—Turn handle to the right or clockwise as far as it will turn to close the release valve. Then pump handle. **To LOWER**—Turn handle to the left or counter-clockwise. It opens the release valve allowing jack to lower.

LUBRICATION—All moving parts should be kept well lubricated.

REFILLING JACK WITH OIL—Jack must be in lowered position. Remove cover plate #9961 and remove filler plug #X-9746 (Fig. 1) and fill oil chamber (Capacity 8-oz.)

NOTE: If oil is dirty or gummy, drain and refill with fresh oil. Use Manley Hydraulic or S.A.E. 20-low cold test oil.

CAUTION—Do not use brake or shock absorber fluid, alcohol, glycerine or castor oil, as these will ruin packing and corrode jack parts.

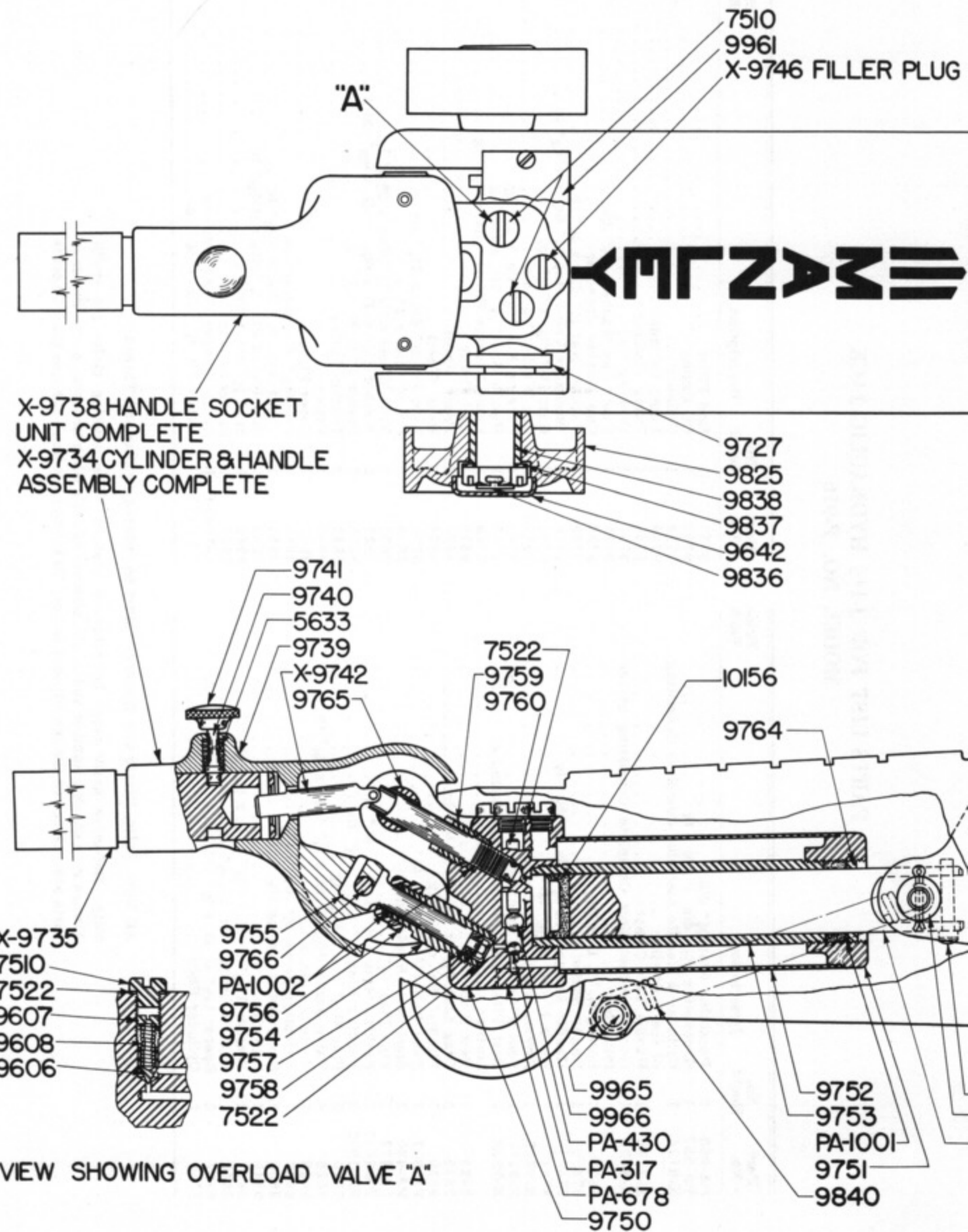
**PARTS LIST FOR J-1½ HYDRAULIC JACK
MODEL NO. P-916**

Part No.	No. Req'd	Description	Price Each
PA-965	2	Retaining Ring ¾" dia.	
PA-957	1	Groove-Pin ⅜" dia. x 1¼" lg.	
X-9734	1	Cylinder & Handle Assembly Complete Consisting of the following:	
X-9735	1	Handle Unit Complete	
X-9738	1	Handle Socket Unit Complete Consisting of the following:	
5633	1	Spring ⅝" I. D. x 1⅜" lg.	
9739	1	Handle Socket	
9740	1	Handle Release Pin ⅜" dia. x 1⅞" lg.	
9741	1	Knob 1" dia. x ⅞" lg.	
X-9742	1	Release Valve Unit Complete	
X-9746	1	Vent Plug Unit Complete	
X-9828	1	Rest Plate Unit Complete Consisting of the following:	
9823	1	Rest Plate	
9829	2	Drag Link ⅝" x 1¼" x 14½" lg.	
9830	1	Pin ⅞" dia. x 3⅞" lg.	
PA-317	1	Steel Ball (Hardened) ¼"	
PA-430	1	Steel Ball (Hardened) ⅜"	
PA-678	1	Pipe Plug ⅛"	
PA-1001	1	Packing Ring 1¼" I. D. x ¼" th.	
PA-1002	2	Packing Ring ½" I. D. x ¼" th.	
7510	2	Plug 1⅞" dia. x 3⅞" lg.	
7522	4	Valve Gasket 1⅞" O. D. x ½" I. D. x ⅜" th.	
9606	1	Valve ½" dia. x ¾" lg.	
9607	1	Adjusting Screw ½" dia. x ⅞" lg.	
9608	1	Compression Spring 1⅜" dia. x 1" lg.	
9642	2	Hub Cap	
9644	2	Washer 1⅞" O. D. x ⅞" I. D. x ⅛" th.	
9658	1	Ram Screw ¼" dia. x 1⅜" lg.	
9727	2	Spacer 1⅝" O. D. x ¼" thick.	
9750	1	Cylinder Body	

Part No.	No. Req'd	Description	Price Each
9751	1	End Filler	
9752	1	Oil Casing	
9753	1	Cylinder	
9754	1	Pump Cylinder	
9755	1	Pump Plunger	
9756	1	Packing Nut	
9757	1	Pump Cup Washer—½" dia.	
9758	1	Cup Washer Spreader	
9759	1	Packing Nut ¾" dia. x ¾" lg.	
9760	1	Discharge Valve Stop ¼" Sq. x 1⅜" lg.	
9761	1	Ram 1¼" dia. x 7⅝" lg.	
10156	1	Cup Washer 1¼" dia.	
9764	1	Packing Nut 1⅝" dia. x ⅜" lg.	
9765	1	Handle Shaft ⅞" dia. x 3¾" lg.	
9766	1	Pump Plunger Pin ½" dia. x 2½" lg.	
9819	1	Bell Crank	
9824	2	Front Wheel	
9825	2	Rear Wheel	
9826	1	Ram Pin ⅞" dia. x 3⅞" lg.	
9832	1	Pin ⅝" dia. x 2" lg.	
9836	2	Rear Wheel Axle ⅞" Hex. x 2⅝" lg.	
9837	2	Washer 1¼" O.D. x ⅞" I. D. x ⅛" thick	
9838	2	Spacer 1" O. D. x 1" lg.	
9840	2	Tension Spring	
9960	1	Frame	
9961	1	Cover Plate	
9962	1	Pin 1⅝" dia. x 5⅝" lg.	
9963	1	Front Axle ¾" dia. x 8⅞" lg.	
9964	2	Shouldered Pin ¾" dia. x 1⅜" lg.	
9965	1	Stud ⅜" dia. x 6¼" lg.	
9966	1	Spacer ⅜" Pipe x 5" lg.	
X-10000	1	Pump Plunger Unit Complete.	
PA-1287	1	Groove-Pin ⅜" dia. x ¾" lg.	

All Nuts, Bolts, Rivets and Washers (Must be ordered by Size and Threads).

Note: Defective parts must be returned prepaid when making claim for credit. Always give catalog number and model number of Jack when ordering parts. Prices on parts are subject to change without notice. No invoice rendered for less than 50 cents.



X-9738 HANDLE SOCKET
UNIT COMPLETE
X-9734 CYLINDER & HANDLE
ASSEMBLY COMPLETE

7510
9961
X-9746 FILLER PLUG

"A"

MANLEY

9727
9825
9838
9837
9642
9836

9741
9740
5633
9739
X-9742
9765

7522
9759
9760

10156
9764

X-9735
7510
7522
9607
9608
9606

9755
9766
PA-1002
9756
9754
9757
9758
7522

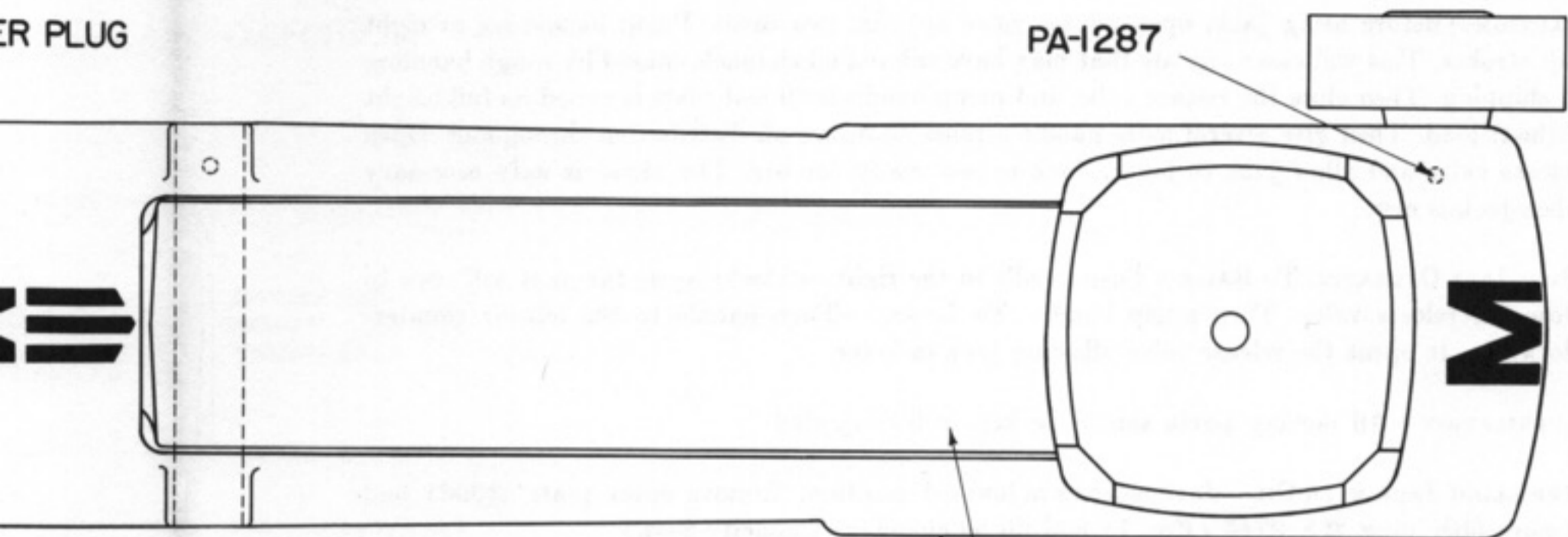
9965
9966
PA-430
PA-317
PA-678
9750

9752
9753
PA-1001
9751
9840

VIEW SHOWING OVERLOAD VALVE "A"

ER PLUG

PA-1287



9819

9960

9824

9963

PA-965

9642

9644

PA-957

9962

9829

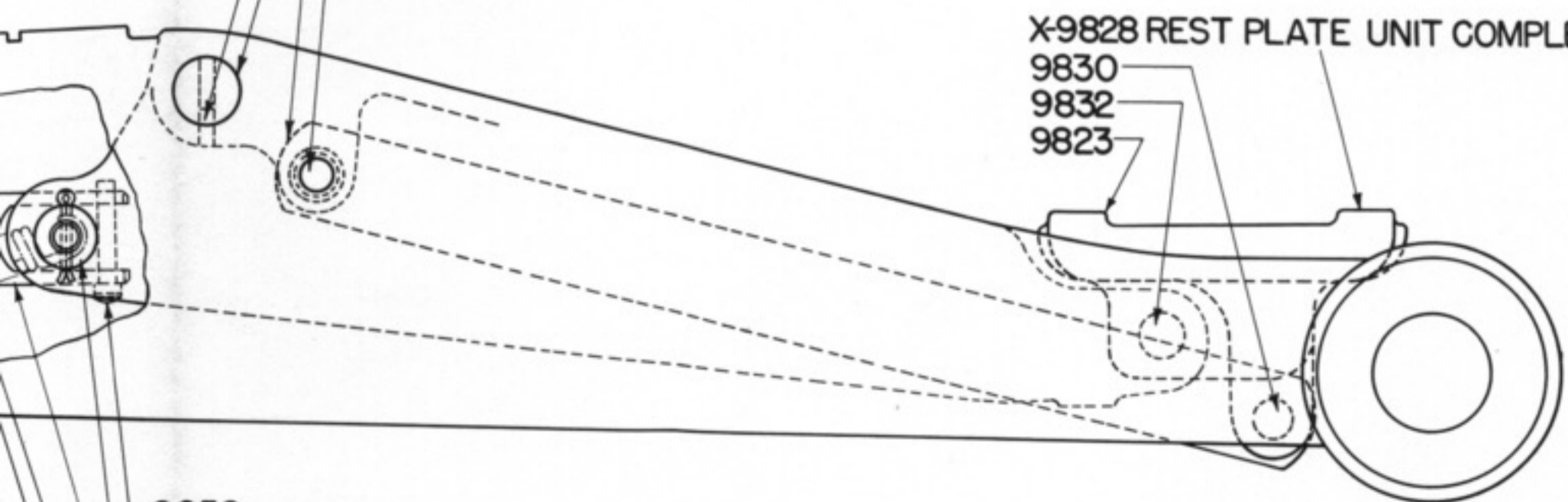
9964

X-9828 REST PLATE UNIT COMPLETE

9830

9832

9823



9658

9826

9761

FIG. 1

M-288