

PARTS LIST & INSTRUCTIONS FOR J-4 HYDRAULIC FLOOR JACK (4-TON CAPACITY) MODEL NO. P-909

HOW THE JACK OPERATES, To Position—Compress left end of Lever No. 9615, Fig. No. 3, raise or lower handle until trip bar engages one of slots in frame making rigid connection. This permits jack to be balanced and pivoted on the casters.

TO PUMP OR RAISE JACK—The control handle remains in neutral position.

TO LOWER—Compress right end of Lever No. 9615, Fig. No. 3, grip until load and rest plate drop.

REFILLING JACK WITH OIL—Proceed as follows:

1—Lower rest plate.

2—Remove oil filler plug. See Fig. No. 1.

3—Fill cylinder with clean hydraulic oil until just visible in oil filler hole. (Do not fill beyond this point.)

4—Raise jack rest plate to high position by pumping jack handle.

5—Replace filler plug and gasket with rest plate still in the high position. *Plug must be air tight.*

To drain oil or clean screen, remove large plug under cylinder (plug must be tight). See Fig. No. 1.

CAUTION—This is a precision unit—prolong its service, observe these precautions.

1—Use clean Manley Hydraulic or S.A.E. No. 10 oil in cylinder. (Never use brake fluid.)

2—Keep oil screen in cylinder clean.

3—Keep jack clean, especially plated ram and pump plunger.

4—Lubricate all moving parts.

Use of brake fluid voids guarantee.

HANDLE ADJUSTMENT: If it becomes necessary to replace handle or handle parts, the handle unit should be checked and adjusted as shown in Fig. 3, before putting it in jack.

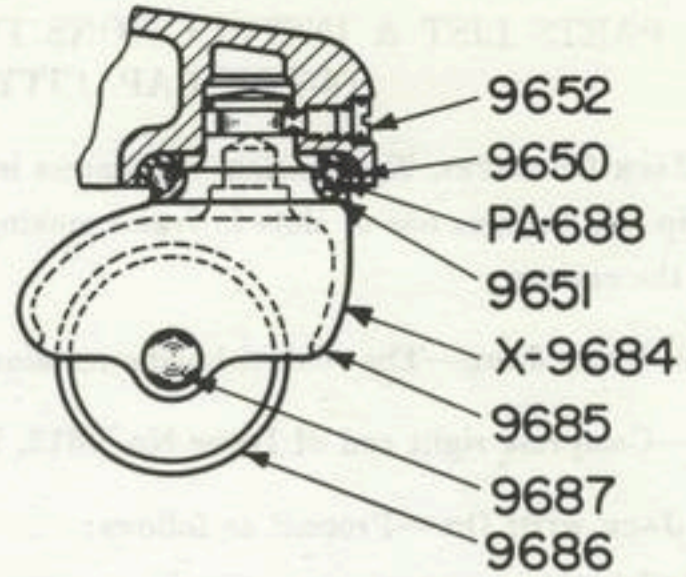
NOTE: Before replacing handle in frame, check release cam as shown in Fig. No. 2. (Release cam must be parallel to edge of frame.)

JACK WILL NOT REMAIN IN RAISED POSITION: After all valves have been inspected and properly seated and jack will not remain in raised position, release cam, Part No. 9638, is out of adjustment.

TO ADJUST: Back off nut, Part No. PA-1093, Fig. No. 2, approximately $\frac{1}{4}$ turn (counterclockwise). (This nut can be reached from bottom of jack.) Raise and lower handle, and if jack should start to lower when handle is raised or lowered, nut, Part No. PA-1093, Fig. No. 2, will have to be turned counter clockwise until jack remains in raised position when handle is raised or lowered.

JACK WILL NOT LOWER: If the jack will not lower, the release cam, Part No. 9638, is out of adjustment.

TO ADJUST: Turn nut, Part No. PA-1093, Fig. No. 2, in a clockwise direction until it comes in contact with release cam, Part No. 9638.



SECTION SHOWING CASTER YOKE ASSEMBLY.
M-296

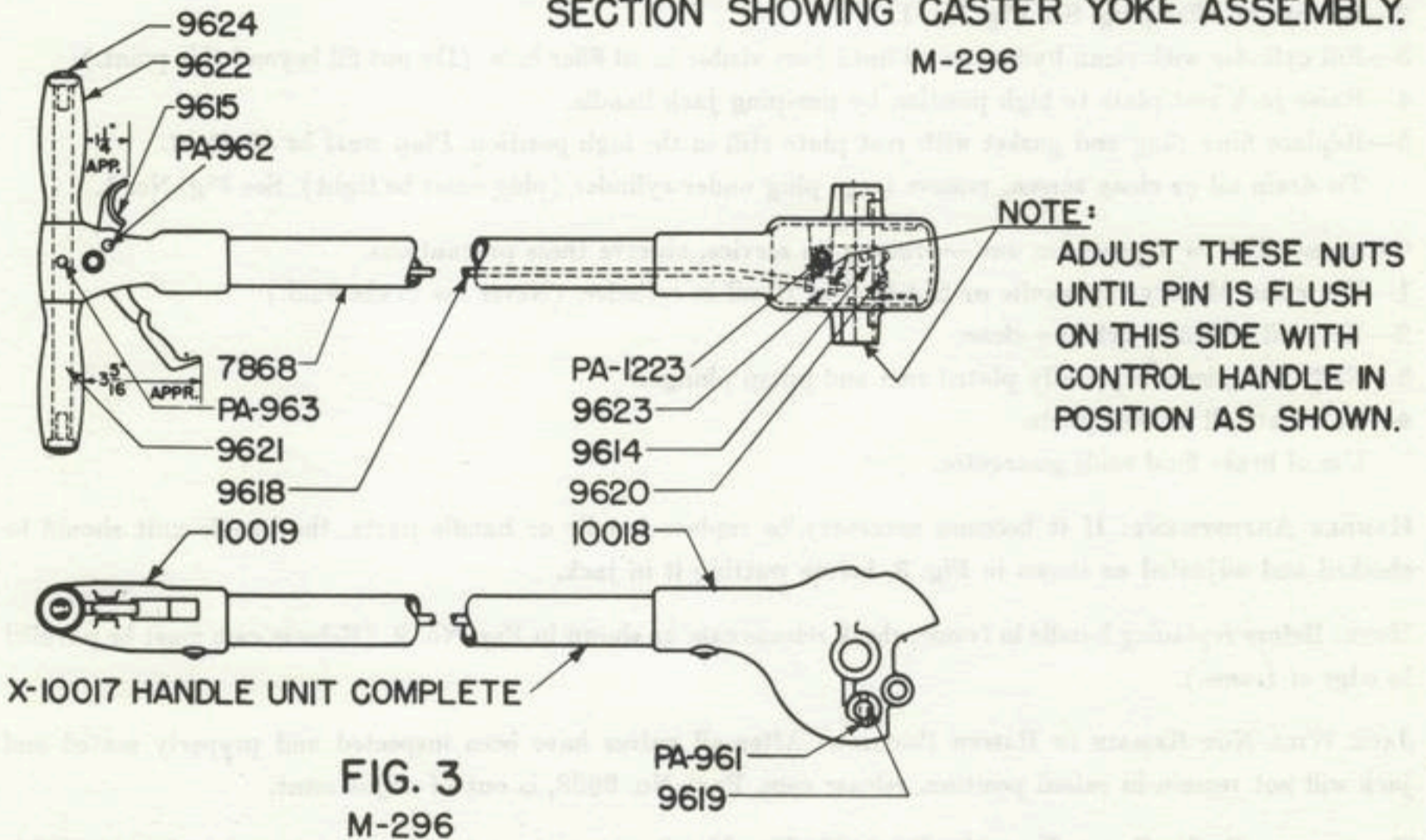


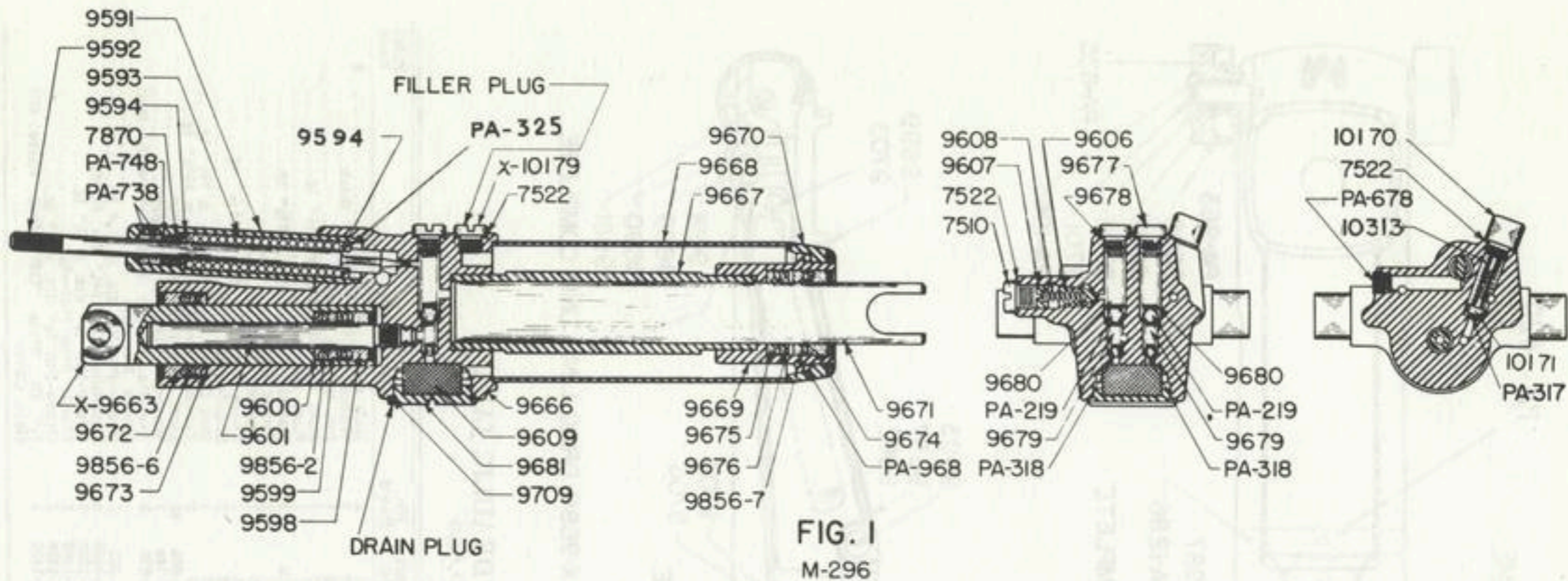
FIG. 3
M-296

PARTS LIST FOR J-4 HYDRAULIC JACK
MODEL NO. P-909

Part No.	No. Req'd	Description	Price Each	Part No.	No. Req'd	Description	Price Each
X-10017	1	Handle Unit Complete	\$	9622	2	Handle	\$
7868	1	Handle 1 1/2\"		9623	1	Release Knuckle	
9614	1	Release Bell Crank		9624	2	Handle Retainer	
9615	1	Control Handle		10018	1	Handle Yoke	
9618	1	Operating Rod .262\"		10019	1	Handle Head	
		lg.		PA-961	1	Groov-Pin 1/4\"	
9619	1	Pin 3/8\"		PA-962	1	Groov-Pin 3/8\"	
9620	1	Tension Spring 3/8\"		PA-963	1	Groov-Pin 1/4\"	
9621	1	Handle Rod 3/8\"		PA-1223	1	Groov-Pin 3/8\"	
		dia. x 10 1/2\"				lg.	

(All Bolts, Nuts, Rivets and Washers must be ordered by size and thread.)

NOTE: Defective parts must be returned prepaid when making claim for credit. Always give catalog number and model number of jack when ordering parts. Prices on parts are subject to change without notice. No invoice rendered for less than 50 cents.



**PARTS LIST FOR J-4 HYDRAULIC JACK
MODEL NO. P-909**

Part No.	No. Req'd	Description	Price Each
X-9662	1	Cylinder Unit Complete	\$
X-9663	1	Speed Plunger Unit	
7510	1	Valve Plug $\frac{1}{2}$ " dia. x $\frac{1}{2}$ " lg.	
7522	3	Valve Gasket $\frac{1}{2}$ " O.D.	
7870	1	Compression Spring $\frac{1}{2}$ " I.D. x $\frac{3}{8}$ " lg.	
9591	1	Release Retainer 1" dia. x $5\frac{1}{4}$ " lg.	
9592	1	Release Stem	
9593	1	Compression Spring $\frac{3}{4}$ " O.D. x $3\frac{1}{2}$ " lg.	
9594	2	Washer $\frac{3}{4}$ " O.D. x $\frac{3}{8}$ " thick	
9598	1	Packing Nut $1\frac{1}{8}$ " O.D. x $\frac{3}{8}$ " lg.	
9599	1	Male Packing Adapter $1\frac{1}{8}$ " O.D. x $\frac{3}{8}$ " lg.	
9600	1	Female Packing Adapter $1\frac{1}{8}$ " O.D. x $\frac{3}{8}$ " lg.	
9601	1	Power Plunger $\frac{1}{2}$ " dia. x $5\frac{1}{8}$ " lg.	
10170	1	By-Pass Plug	
9606	1	Valve $\frac{1}{2}$ " dia. x $\frac{3}{4}$ " lg.	
9607	1	Adjusting Screw $\frac{1}{2}$ " dia. x $\frac{3}{8}$ " lg.	
9608	1	Compression Spring $\frac{1}{2}$ " O.D. x 1" lg.	
9609	1	Oil Strainer	
9666	1	Pump and Valve Body	
9667	1	Cylinder	
9668	1	Oil Casing	
9669	1	Packing Gland	
9670	1	Cylinder End	
9671	1	Ram 2" dia. x $11\frac{1}{2}$ " lg.	
9672	1	Packing Nut $2\frac{1}{8}$ " O.D. x $\frac{3}{8}$ " lg.	
PA-325	1	Gasket $\frac{1}{2}$ " O.D. x $\frac{1}{8}$ " thick	

Part No.	No. Req'd	Description	Price Each
9673	1	Male Packing Adapter $2\frac{1}{4}$ " O.D. x $\frac{3}{8}$ " lg.	\$
9674	1	Packing Nut $2\frac{1}{8}$ " O.D. x $\frac{3}{8}$ " lg.	
9675	1	Male Packing Adapter $2\frac{1}{2}$ " O.D. x $\frac{3}{8}$ " lg.	
9676	1	Packing Spacer $2\frac{1}{2}$ " O.D. x $\frac{1}{2}$ " lg.	
9677	2	Valve Plug $\frac{3}{4}$ " dia. x $\frac{1}{2}$ " lg.	
9678	2	Valve Gasket $\frac{3}{4}$ " O.D.	
9679	2	Compression Spring $\frac{1}{2}$ " O.D. x $\frac{1}{2}$ " lg.	
9680	2	Compression Spring $\frac{1}{2}$ " O.D. x $1\frac{1}{8}$ " lg.	
9681	1	Oil Strainer Plug	
9709	1	Strainer Gasket $1\frac{1}{8}$ " O.D. x $\frac{3}{8}$ " thick	
10313	1	Compression Spring $\frac{1}{2}$ " I.D. x $1\frac{1}{8}$ " lg.	
10171	1	Spring End	
PA-219	2	Steel Ball (Hardened) $\frac{1}{8}$ "	
PA-317	1	Steel Ball (Hardened) $\frac{1}{4}$ "	
PA-318	2	Steel Ball (Hardened) $\frac{3}{8}$ "	
PA-678	1	Pipe Plug— $\frac{1}{8}$ "	
PA-738	1	Set of Compression Packing 2-Rings— $\frac{3}{8}$ " I.D.	
PA-748	1	Washer $\frac{1}{2}$ " O.D. x $\frac{3}{8}$ " thick	
PA-968	1	"O" Ring $3\frac{3}{8}$ " O.D.	
9856-2	1	Set Chevrans $\frac{1}{8}$ " I.D. 5-Solid Rings	
9856-6	1	Set Chevrans $1\frac{1}{8}$ " I.D. 4-Solid Rings	
9856-7	1	Set Chevrans 2" I.D. 5-Solid Rings	
X-10179	1	Filler Plug Unit	

Form M-296 (Rev. 11-2-50)

MANLEY DIVISION OF AMERICAN CHAIN & CABLE COMPANY, INC., YORK, PENNA.

NOTE:

RELEASE CAM TO BE PARALLEL TO EDGE OF FRAME

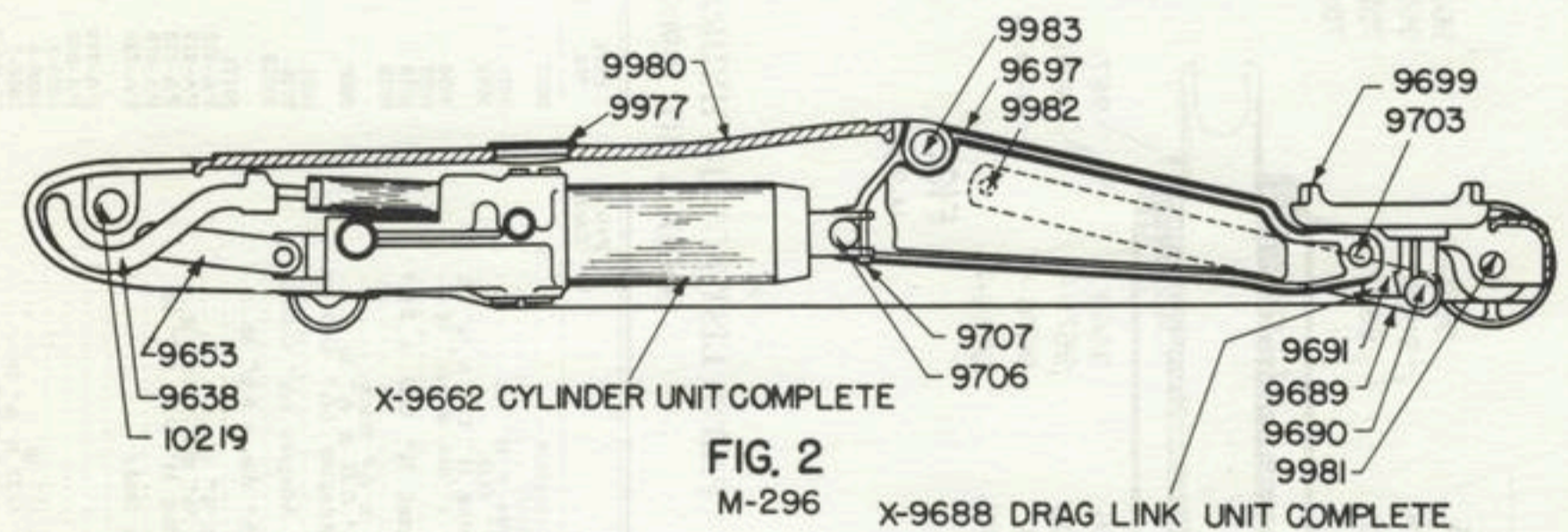
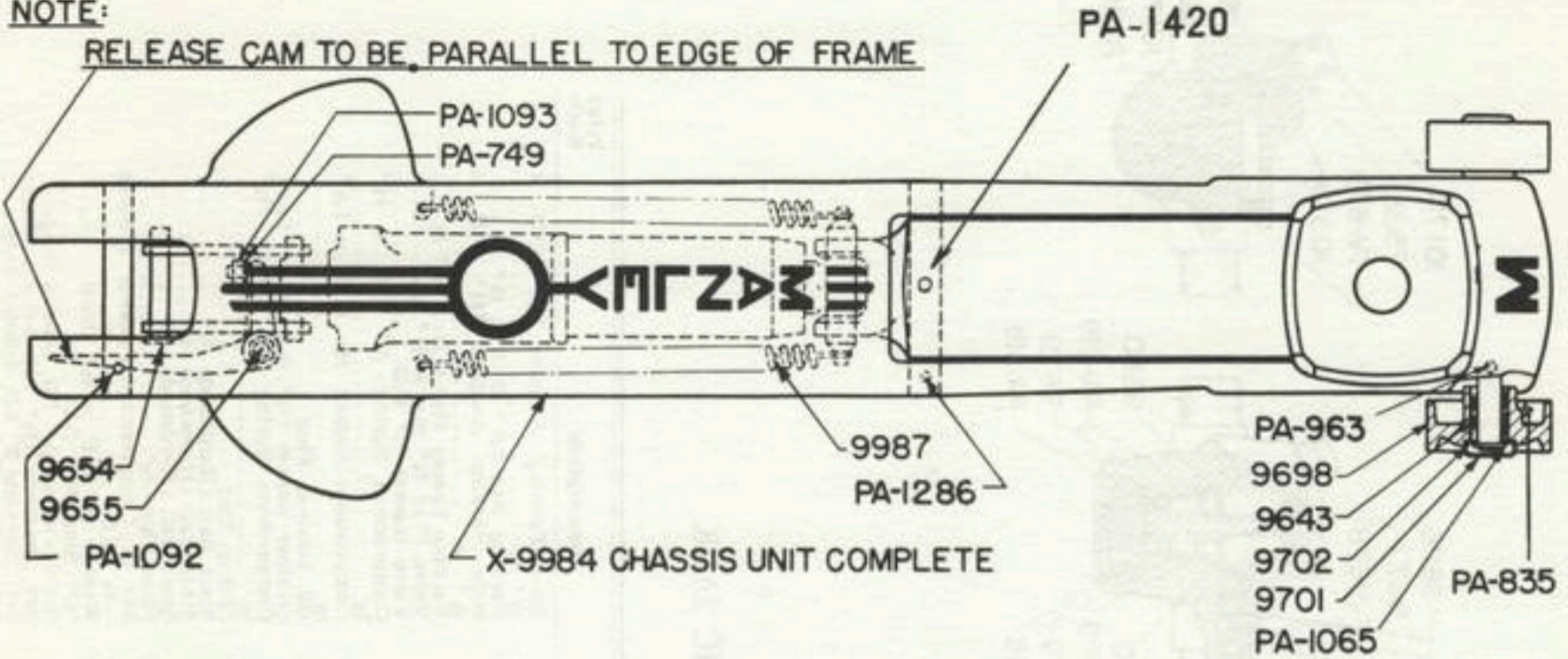


FIG. 2
M-296

**PARTS LIST FOR J-4 HYDRAULIC JACK
MODEL NO. P-909**

Part No.	No. Req'd	Description	Price Each
X-9984	1	Chassis Unit Complete	\$
X-9684	2	Caster Unit Complete	
9685	2	Caster Yoke	
9686	2	Caster Wheel	
9687	2	Pin 1/2" dia. x 2 1/8" lg.	
X-9688	1	Drag Link Unit Complete	
9689	2	Drag Link 3/8" x 1 1/2" x 18 1/4" lg.	
9690	1	Pin 3/4" dia. x 4 7/8" lg.	
9691	1	Rest Plate Bearing	
9638	1	Release Cam	
9643	46	Pin 1/8" dia. x 1 1/2" lg.	
9650	2	Outer Ball Race	
9651	2	Inner Ball Race	
9652	2	Caster Screw	
9653	2	Pump Link 1/4" x 1" x 5" lg.	
9654	1	Shouldered Pin	
9655	1	Release Cam Stud	
9697	1	Bell Crank	
9698	2	Wheel	
9699	1	Rest Plate	

Part No.	No. Req'd	Description	Price Each
9701	2	Hub Cap	\$
9702	2	Washer 1 1/2" O.D. x 1/8" thick.	
9703	1	Pin 3/4" dia. x 3 1/2" lg.	
9706	1	Ram Pin 1 1/8" dia. x 5 1/2" lg.	
9707	1	Ram Screw	
10219	1	Handle Pin 7/8" dia. x 6 1/8" lg.	
9977	1	Cover Plate	
9980	1	Frame	
9981	1	Front Axle 1 1/4" dia. x 11 1/8" lg.	
9982	2	Shouldered Pin	
9983	1	Bell Crank Pin 1 3/8" dia. x 7 3/4" lg.	
9987	2	Tension Spring 1/2" dia. x 10 3/4" lg.	
PA-688	42	Steel Ball (Hardened) - 1/4"	
PA-749	1	Washer 1" O.D. x 1/8" thick	
PA-835	2	Alemite Grease Fitt. 1/4" with Ball Check No. 1641	
PA-963	1	Groov-Pin 1/4" dia. x 1 1/4" lg.	
PA-1065	2	Retaining Ring 1 1/4" dia. Shaft	
PA-1092	1	Groov-Pin 1/4" dia. x 3/4" lg.	
PA-1093	1	Elastic Stop Nut - 3/8"	
PA-1286	1	Groov-Pin 1/4" dia. x 2" lg.	
PA-1420	1	1/4" Dr. Style "GB" Ball Valve Oil Hole Cover	