



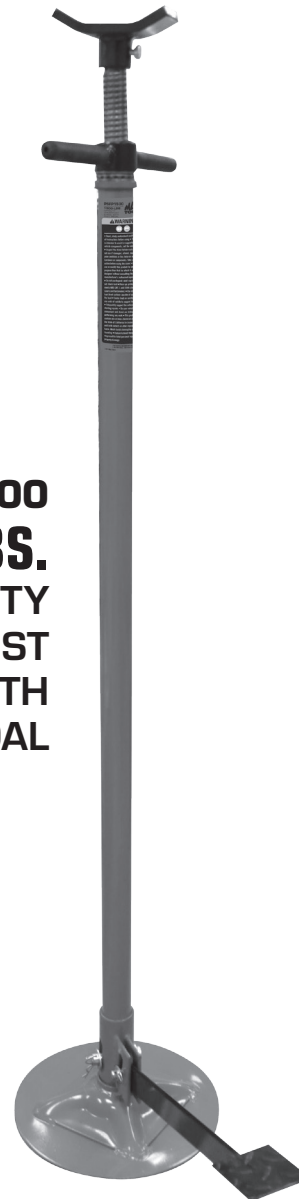
**PS1500 AND PSFP1500**  
**1500-LBS. CAPACITY**  
**UNDERHOIST STANDS**

**OWNER'S MANUAL**

**PS1500**  
**1500-LBS.**  
**CAPACITY**  
**UNDERHOIST**  
**STAND**



**PSFP1500**  
**1500-LBS.**  
**CAPACITY**  
**UNDERHOIST**  
**STAND WITH**  
**PEDAL**



**SPECIFICATIONS**

	PS1500	PSFP1500
Maximum Capacity.....	1500-Lbs.	1500-Lbs.
Minimum Height.....	53-3/8"	53-3/8"
Maximum Height.....	80-1/8"	80-1/8"
Base Size.....	12"	12"
Weight.....	30.8-Lbs.	31.9-Lbs.



## WARNING INFORMATION

THIS INSTRUCTION MANUAL USES THE FOLLOWING SYMBOLS AND DEFINITIONS TO ALERT YOU TO HAZARDOUS CONDITIONS WHICH MAY CREATE A RISK OF PERSONAL INJURY AND/OR PROPERTY DAMAGE.



This is the safety alert symbol. It is used to alert you to potential personal injury hazards. Obey all safety messages that follow this symbol to avoid possible injury or death.

### WARNING

**WARNING:** Indicates a hazardous situation which, if not avoided, could result in death or serious injury.



### IMPORTANT: READ THESE INSTRUCTIONS BEFORE OPERATING

**BEFORE USING THIS DEVICE, READ THIS MANUAL COMPLETELY AND THOROUGHLY, UNDERSTAND ITS OPERATING PROCEDURES, SAFETY WARNINGS AND MAINTENANCE REQUIREMENTS. SAVE THESE INSTRUCTIONS.**

It is the responsibility of the owner to make sure all personnel read this manual prior to using these stands. It is also the responsibility of the stand owner to keep this manual intact and in a convenient location for all to see and read. If the manual or product labels are lost or not legible, contact Mac Tools for replacements. If the operator is not fluent in English, the product and safety instructions shall be read to and discussed with the operator in the operator's native language by the purchaser/owner or his designee, making sure that the operator comprehends its contents.

### WARNING

This product is intended only for use in lifting and supporting vehicle components. Do not use or modify this product for any other purpose than that for which it was designed without consulting the manufacturer's authorized representative. The use of portable automotive lifting and support devices are subject to certain hazards that cannot be prevented by mechanical means, but only by the exercise of intelligence, care, and common sense. It is therefore essential to have owners and personnel involved in the use and operation of the equipment who are careful, competent, trained, and qualified in the safe operation of the equipment and its proper use. Examples of hazards are dropping, tipping or slipping of loads caused primarily by improperly securing loads, overloading, off-centered loads, use on other than hard level surfaces, and using equipment for a purpose for which it was not designed.

## METHODS TO AVOID HAZARDOUS SITUATIONS

### WARNING



- Read, study, understand and follow all instructions before operating this device
- This stand is intended to assist in supporting under vehicle components, not the vehicle
- Inspect the stand before each use. Do not use if damaged, altered, modified, in poor condition, or has loose or missing hardware or components. Take corrective action before using the stand
- Do not use or modify this product for any other purpose than that for which it was designed without consulting the manufacturer's authorized representative
- Do not use beyond rated capacity. Do not shock load
- Wear eye protection that meets ANSI Z87.1 and OSHA standards (users and bystanders)
- Use only on a hard level surface capable of supporting the load
- Center load on saddle. Do not use ends of saddle to support load
- Adequately support the vehicle before starting repairs
- Be sure vehicle, vehicle component and stand are stable before performing any work
- This product may contain one or more chemicals known to the State of California to cause cancer and birth defects or other reproductive harm. *Wash hands thoroughly after handling*
- Failure to heed these warnings may result in serious or fatal personal injury and/or property damage

## CONSEQUENCES OF NOT AVOIDING HAZARDOUS SITUATIONS

### WARNING

Failure to read this manual completely and thoroughly, failure to understand its OPERATING INSTRUCTIONS, SAFETY WARNINGS, MAINTENANCE INSTRUCTIONS and comply with them, and failure to comply with the METHODS TO AVOID HAZARDOUS SITUATIONS could cause accidents resulting in serious or fatal personal injury and/or property damage.



## PS1500 AND PSFP1500 1500-LBS. CAPACITY UNDERHOIST STANDS

### SETUP INSTRUCTIONS

---

**⚠ WARNING** Failure to follow these Setup Instructions may result in serious injury or death, and/or property damage.

1. Screw the post support in the round base.
2. Thread the large spin handle on the extension screw.
3. Install the bearing assembly in the receiver on top of the support tube.
4. Insert the extension screw assembly through the bearing and into the support tube until the underside of the spin handle rests on the bearing assembly.
5. The model PSFP1500 includes a pedal. Insert the other end of the pedal through the parallel flanges of the post support; raise the pedal high enough so the clevis pin can be installed through the parallel flanges of the post support. Secure the clevis pin with the washers and cotter pin provided.

### OPERATING INSTRUCTIONS

---

**⚠ WARNING** Failure to follow these Operating Instructions may result in serious injury or death, and/or property damage.

1. Make sure the vehicle is properly supported, stable and at the required work height before positioning the stand(s) under the vehicle component to be supported.
2. Consult the vehicle manufacturer for the proper handling of the component and use of underhoist stands.
3. Once the stand(s) has been positioned properly under the component, hold the stand's saddle in place with one hand while turning the spin handle in a clockwise direction with the other hand. Remove the one hand from the stand's saddle when it comes close to making contact with the component.
4. Continue turning the stand's spin handle in a clockwise direction until it applies pressure against the component. This pressure should not exceed what is required to support the component. Excessive pressure might cause the vehicle or its component to become unstable. Additional precaution should be taken when using a stand equipped with a foot pedal which can raise the stand's saddle another inch more in height and produce as much as 400 pounds of force when depressed.
5. Before removing the stand from the component, make sure the component is securely fastened to the vehicle or properly supported by another means. Removal of the stand can be accomplished by turning the spin handle in a counterclockwise direction until the stand's saddle is clear of the component.

### PREVENTATIVE MAINTENANCE

---

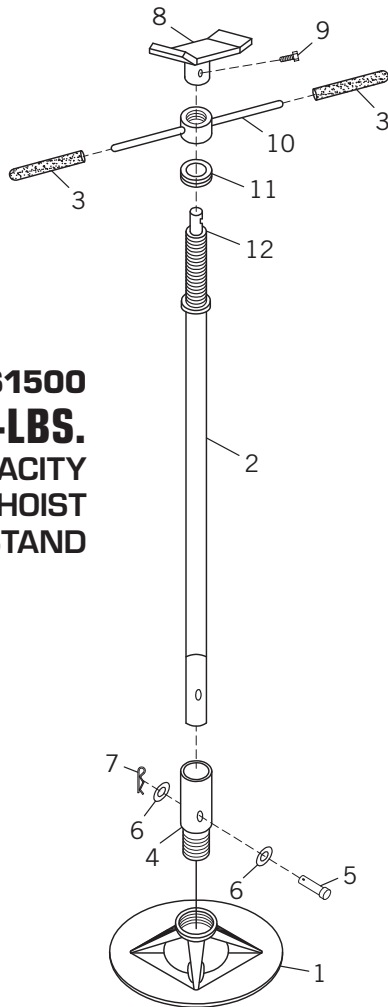
**⚠ WARNING** Failure to follow these Preventative Maintenance instructions may result in serious injury or death, and/or property damage.

1. Always store the stands in a well protected area where they will not be exposed to inclement weather, corrosive vapors, abrasive dust, or any other harmful elements. The stands must be cleaned of water, snow, sand, grit, oil, grease or other foreign matter before using.
2. Use a general purpose grease to lubricate the extension screw and foot pedal linkage if so equipped.
3. Every stand owner is responsible for keeping the stand labels clean and readable. Use a mild soap solution to wash external surfaces of the stand. Contact Mac Tools for a replacement label if your stand's label is not readable.
4. Inspect the stand before each use. Do not use the stand if any component is cracked, broken or bent. Do not use the stand if it has loose or missing hardware or components, or is modified in any way. Take corrective action before using the stand again. Premature wearing or damage to components caused by loose or missing hardware is not eligible for warranty consideration.

## PS1500 AND PSFP1500 1500-LBS. CAPACITY UNDERHOIST STANDS

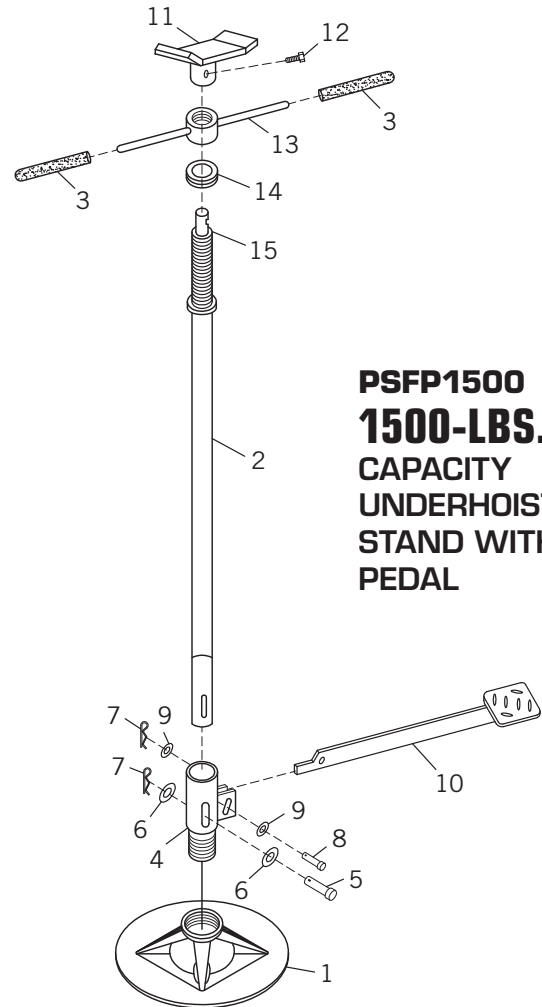
### PARTS LIST AND DIAGRAM

**PS1500**  
**1500-LBS.**  
CAPACITY  
UNDERHOIST  
STAND



Item No.	Part No.	Description	Qty.
1	RS6809A01	Base	1
2	RS6809A02	Post	1
3	RS6809A03	Handle Grip	2
4	RS6809A04	Post Support	1
5	RS6809A05	Clevis Pin	1
6	RS6809A06	Flat Washer (16)	2
7	RS6809A07	Cotter Pin	1
8	RS150011	Saddle	1
9	RS6809A12	Hex Bolt (M8 x 16)	1
10	RS6809A08	Handle	1
11	RS6808BD02	Bearing (8106)	1
12	RS6809A09	Screw Stem	1
	RSPS1500PL	Product label (not shown)	1

**PSFP1500**  
**1500-LBS.**  
CAPACITY  
UNDERHOIST  
STAND WITH  
PEDAL



Item No.	Part No.	Description	Qty.
1	RS6809A01	Base	1
2	RS681002	Post	1
3	RS6809A03	Handle Grip	2
4	RS681004	Post Support	1
5	RS6809A05	Clevis Pin	1
6	RS6809A06	Flat Washer (16)	2
7	RS6809A07	Cotter Pin	2
8	RS681008	Clevis Pin (12 x 35)	1
9	RS681009	Flat Washer (12)	2
10	RS150010	Foot Pedal	1
11	RS150011	Saddle	1
12	RS6809A12	Hex Bolt (M8 x 16)	1
13	RS6809A08	Handle	1
14	RS6808BD02	Bearing (8106)	1
15	RS6809A09	Screw Stem	1
	RSPSFP1500PL	Product Label (not shown)	1



## **PS1500 AND PSFP1500 1500-LBS. CAPACITY UNDERHOIST STANDS**

### **LIMITED WARRANTY**

---

**MAC TOOLS WARRANTS TO ITS CUSTOMERS THAT THE COMPANY'S MAC TOOLS BRANDED PRODUCTS ARE FREE FROM DEFECTS IN WORKMANSHIP AND MATERIALS.**

Mac Tools will repair or replace its Mac Tools branded products which fail to give satisfactory service due to defective workmanship or materials, based upon the terms and conditions of the following described warranty plans attributed to that specific product. This product carries a ONE-YEAR warranty. During this warranty period, Mac Tools will repair or replace at our option any part or unit which proves to be defective in material or workmanship.

**Other important warranty information:**

This warranty does not cover damage to equipment or tools arising from alteration, abuse, misuse, damage and does not cover any repairs or replacement made by anyone other than Mac Tools. The foregoing obligation is Mac Tools sole liability under this or any implied warranty and under no circumstances shall we be liable for any incidental or consequential damages.

**Note:** Some states do not allow the exclusion or limitation of incidental or consequential damages, so the above limitation or exclusion may not apply to you. If you have any questions about warranty service, please contact Mac Tools. This warranty gives you specific legal rights and you may also have other rights which vary from state to state.