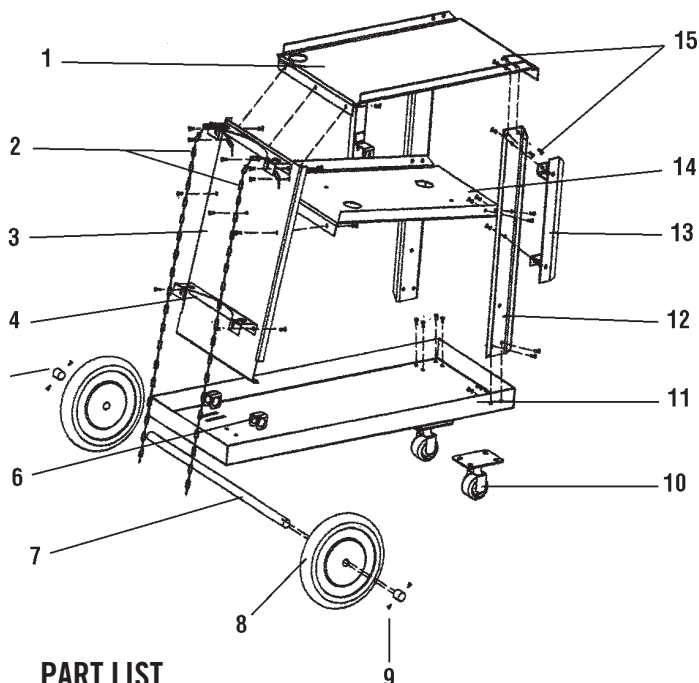


⚠ WARNING



Please read carefully to avoid unnecessary injury!

1. Cart is designed to carry one gas cylinder only for use with mig welding. Use caution when handling compressed gas cylinders and use only in upright position. Use provided chains top and bottom to snug cylinder to cart as tight as possible.
2. Cart is designed to roll easily on flat surfaces and should not be used on uneven or inclined surfaces.
3. Cart can be easily moved into position by grasping front downward flange of top shelf. Use caution when moving cart as weight of welder could cause cart to be top heavy.
4. Do not pull cart by welder leads as this could cause cart to tip over.
5. Do not attempt to weld to cylinder and do not fasten ground leads to welding cart, thus completing the circuit, which could cause mig gun to arc unexpectedly.
6. Failure to follow precautions and common sense could cause serious injury.
7. **Cart Load Limit: 250 lbs.**
8. Do not load cart beyond rated capacity
9. Cart can tip or fall causing damage or personal injury
10. Keep children away from cart
11. Wear gloves when lifting edges
12. Failure to heed all instructions, warnings and precautions may result in personal injury and/or property damage.



PART LIST

Part No.	Description	Qty.
1	Top Shelf	1
2	Chains	2
3	Vertical Support Panel	1
4	Brackets for Tank Support	2
5	Plastic End Cap	2
6	Axle Brackets	2
7	Axle	1
8	Rear Wheel	2
9	Screws	4
10	Front Caster	2
11	Bottom Shelf	1
12	Side Support Rails	2
13	Brackets	2
14	Center Shelf	1
15	Bolt Kit	1

ASSEMBLY

1. Slide axle brackets (6) through slots in bottom shelf (11). Slide axle (7) through brackets on bottom of shelf. Fit wheels (8) onto axle, add plastic cap (5) on end of axle and screw end caps in place.
2. Install casters to front of bottom shelf (11) using 4 hex head screws and washers to one side of shelf and 4 lock washers and hex nuts to other side of shelf. Finger tighten all screws and nuts until complete.
3. Add vertical support panel (3) to bottom of shelf (11). Fasten through center hole of vertical support first. Then fasten through side holes in bottom of vertical support.
4. Fasten side support rails (12) to bottom shelf. Add center shelf (14) with flanges up. Start by fastening center hole towards rear of shelf then side holes in rear of shelf, finally front side holes to side support rails.
5. Fasten top shelf (1) in similar fashion, but include brackets (13) for cord storage to top front holes in side support rails. Now tighten all fasteners.

REPLACEMENT PARTS

Part No.	Description	Qty.
RSWLD01	Rear Wheel/EA (#8)	1
RSWLD02	Cap with Screws/EA (#5,9)	1
RSWLD03	Chain/EA (#2)	1
RSWLD04	Complete Bolt Kit (incl.chains) (#2,15)	1
RSWLD05	Front Caster/EA (#10)	1



WARNING: Cancer and Reproductive Harm – www.P65Warnings.ca.gov.