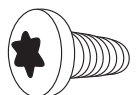




**MB197UC, -BK, -BL, -FBK,
-GRAY, -LG, -OR, -WT, -YE**
3 DRAWER
DELUXE UTILITY CART

OWNER'S MANUAL

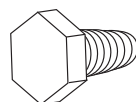
HARDWARE SPECIFICATIONS



T40 Torx Bolt (M8) 32 pcs. (1A)



T40 Torx Bolt (M8) 8pcs. (1B)



Hex Bolt, Washer, and Lock
Washer (M8 x 20) 16 pcs. (8)

TOOLS NEEDED FOR ASSEMBLY:

- T40 Torx Driver or Torx Key
- 13mm Combination Wrench
- Socket or Universal Socket
- 4" Extension and Ratchet



! WARNING



- Read and follow all instructions in User's Manual
- Do not load carts beyond rated capacity:

Maximum Total Net Load 500-Lbs.
Top and Bottom Shelf 150-Lbs. each
Top Two Drawers 100-Lbs. each
Bottom Drawer 200-Lbs.
Sliding Work Surface (closed) 200-Lbs.
Sliding Work Surface (fully extended) 50-Lbs.

PLEASE NOTE: Loading cart beyond rated capacity may cause structural damage to the cart as well as personal and /or property damage. Please educate your customers to the "dangers of overloading"

- Lock lid and drawers before moving
- Apply brake on locking casters anytime cart is in place
- Do not pull cart. Push from handle on end to move
- Units can tip or fall causing damage or personal injury
- Cart is designed to roll easily on flat surfaces and should not be used on uneven or inclined surfaces
- Do not open more than one loaded drawer at a time
- Do not stand on or step in drawers
- Keep children away from unit
- Wear gloves when lifting edges
- This product may contain one or more chemicals known to the State of California to cause cancer and birth defects or other reproductive harm. *Wash hands thoroughly after handling*
- Failure to heed these warnings may result in personal injury and/or property damage

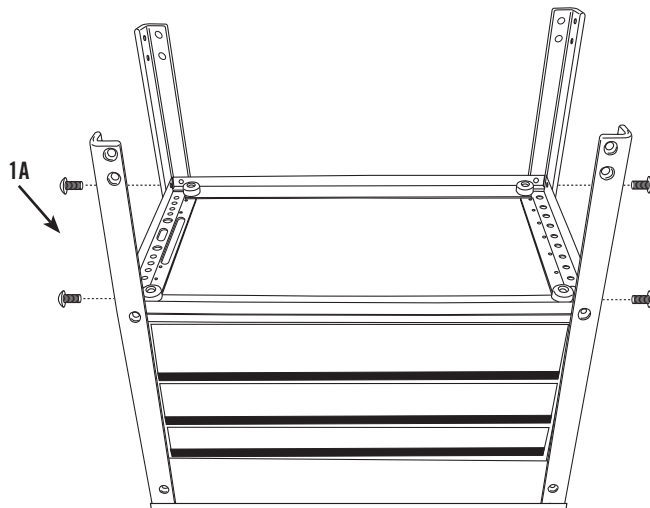
OWNER'S MANUAL

ASSEMBLY INSTRUCTIONS

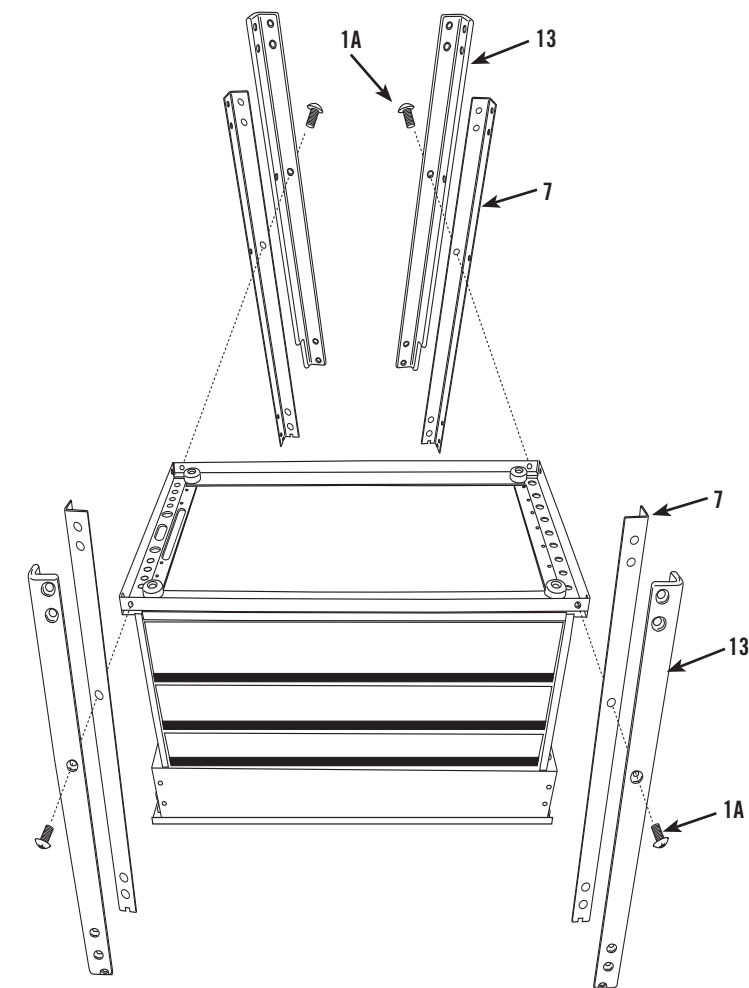
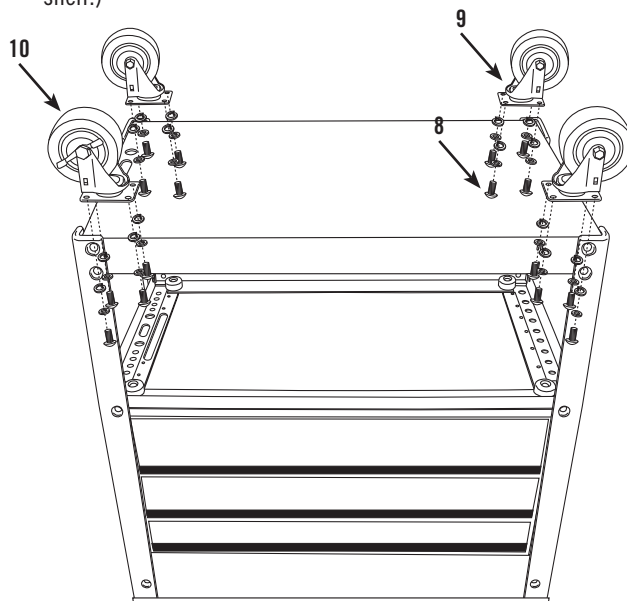
Due to the weight of this cart we recommend that **TWO PEOPLE** work together on the assembly. This cart weighs approximately 200 lbs, please use caution during assembly.

- Step 1:** Locate the key tied to the bottom shelf. Using the key, open the sliding top, move the lever to unlock the drawers, and remove the caster box from the bottom drawer. Once removed, make sure all drawers are completely closed and the inside lever is in the locked position. Close the sliding top and lock.
- Step 2:** Lay out a work surface using the protective foam provided. Once this surface is secure, gently turn the cart onto its back.
- Step 3:** (Before assembling the legs, remove the cable tie holding the bumper in place.) Insert the front leg (Part #7). Then place the front bumper (Part #13), labeled FL or FR, over the leg, aligning the center bolt holes. With holes aligned, insert Torx bolt (Part #1A) and finger tighten.
- Step 4:** Install back leg (Part #7) and bumper (Part #13), labeled BR or BL, following the same procedure as above.

- Step 5:** Repeat steps 3 & 4 to mount the legs on the opposite side.



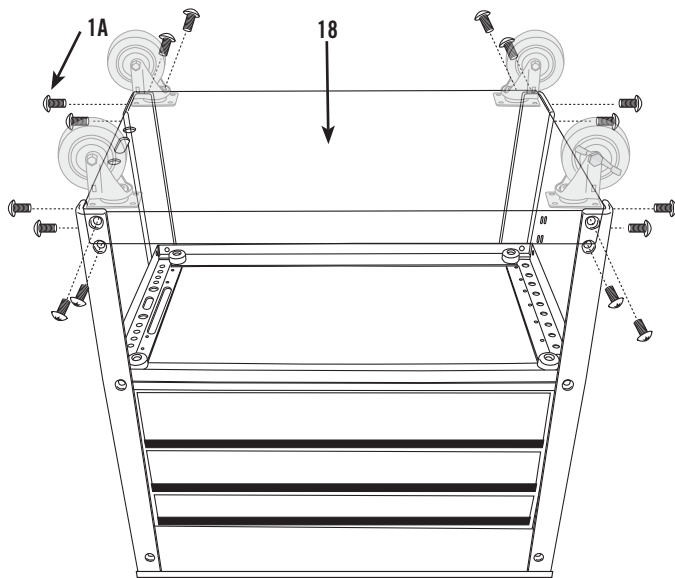
- Step 6:** Mounting casters: Put the four casters in place. The two locking casters (Part #10) should be on one side of the cart, and the two non locking casters (Part #9) should be on the other (**Left or right side, NOT front or back**). Using the 16 bolts (Part #8), washers, and lock washers (located in separate caster bag), completely tighten the casters to the bottom tray, using a 13mm socket or 13mm combination wrench for the bolt head. (Note: Bolt head, washer and lock washer should be on the inside of the bottom shelf.)



PARTS DIAGRAM

ASSEMBLY INSTRUCTIONS (CONTINUED)

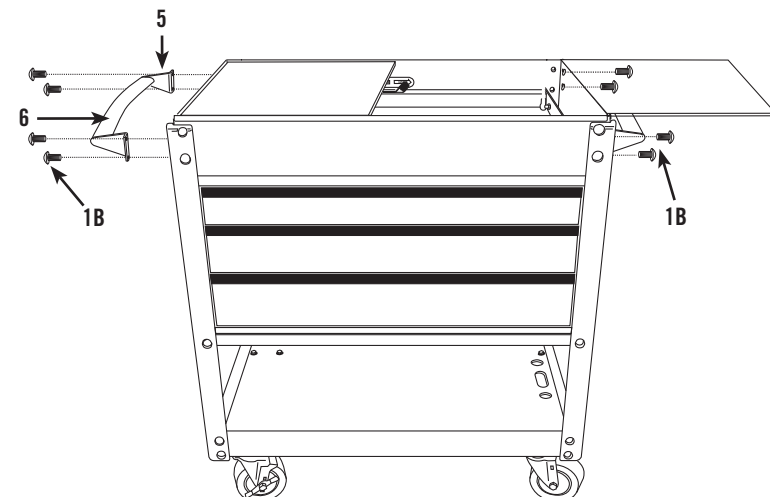
Step 7: Insert bottom shelf (Part #18) between the four legs, flat side facing up towards the ceiling. Make sure the side with 3 holes is on the same side as corresponding large oval hole in the middle section and the black tubes at the top. Insert sixteen Torx bolts (Part #1A) and finger tighten.



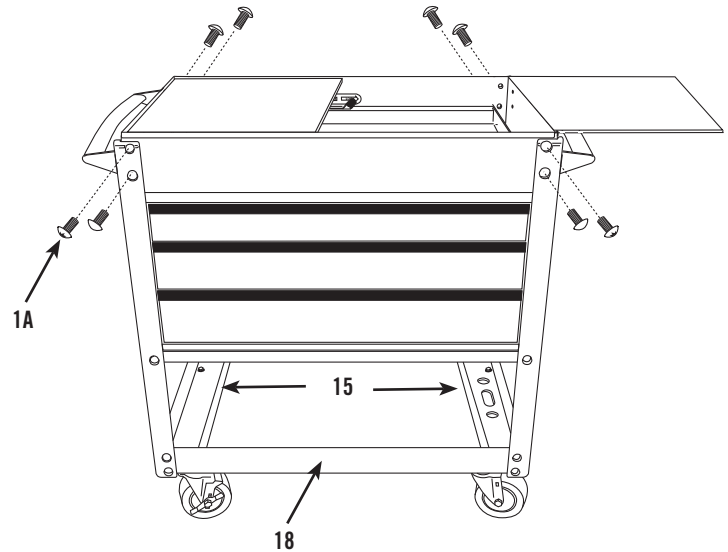
Step 8: Carefully lift cart onto its casters.

Step 9: Open sliding top using the key provided.

Step 10: Assemble the brackets (Part #5) to the comfort grip push handles (Part #6); then mount push handles and brackets to both sides of the cart using the eight Torx bolts (Part #1B) provided. Finger tighten at this time.



Step 11: Insert the remaining 8 Torx bolts (Part #1A).



Step 12: Completely tighten all fasteners!!

Step 13: Insert spray can dividers (Part #15) into provided channels on the bottom shelf (Part #18).

TROUBLESHOOTING

Troubleshooting Points during MB197UC Assembly.

Problem: Drawers appear not to fit, do not slide in accurately and bump the cart sides.

Solution: The roller bearing slides must be fully engaged into the mounting slots on all drawers. They potentially could fall out of position while turning the cart on its lid, back, or onto its casters.

Remove the drawer that is out of position. The drawer is removed by the two clips on the roller bearing slides.

Simply push the roller bearing slide back down into position.

Insert the drawer back onto the roller bearing slides.

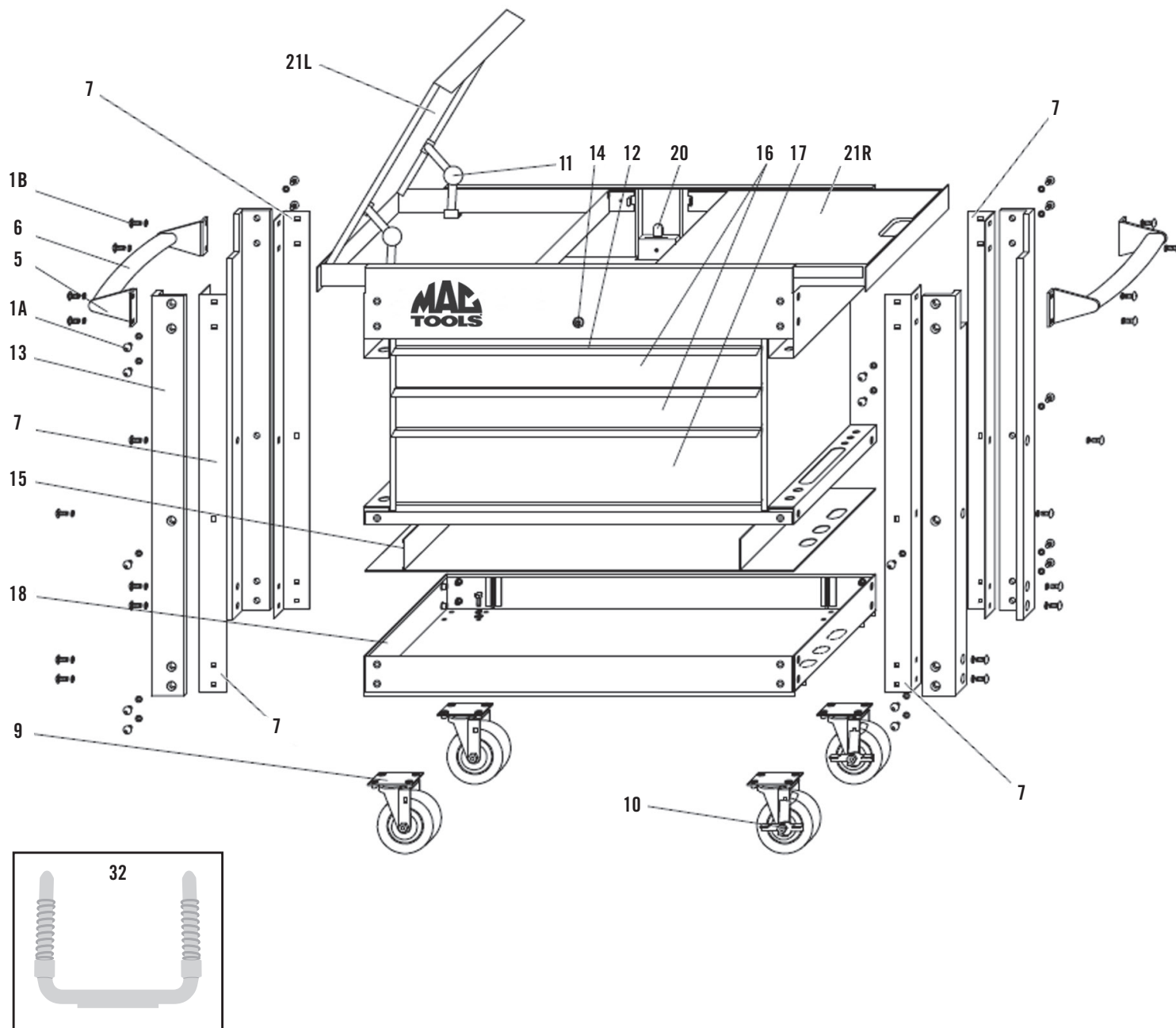
Problem: Back Lock/Unlock Switch does not engage the drawer.

Solution: The inside Lock/Unlock slide potentially could fall out of its groove while turning the cart on its lid, back, or onto its casters during assembly.

Unscrew the two screws that are holding the Lock/Unlock slide in place.

Once the screws are removed simply place the latch back onto the slide and tighten the two screws back down.

PARTS DRAWING



PARTS LIST

Item No.	Part No.	Description	Qty	Item No.	Part No.	Description	Qty
1A	RS195UCBK	Set of 32 M8 Torx Bolts	1		MBS197UCFBK	Flat Black Bottom Shelf	
1B		M8 Torx Bolts (4 included w/ each #5)	8		MBS197UCBL	Blue Bottom Shelf	
5	RS195UCHB	Push Handle Brackets/Pair with Hardware	2		MBS197UCYE	Yellow Bottom Shelf	
	RS195UCHBBK	Flat Black Push Handle Brackets/Pair with Hardware			MBS197UCLG	Lime Green Bottom Shelf	
6	RS190UCHDL	Push Handle	2		MBS197UCOR	Orange Bottom Shelf	
7	RS197UCLGR	Red Leg/each	4		MBS197UCGRAY	Gray Bottom Shelf	
	RS197UCLGBK	Black Leg/each			MBS197UCWT	White Bottom Shelf	
	RS197UCLGFBK	Flat Black Leg/each		19	RS190UCPBT	Prybar Tube/each	3
	RS197UCLGBL	Blue Leg/each		20	RS197UCLMR	Red Locking Mechanism	1
	RS197UCLGYE	Yellow Leg/each			RS197UCLMBK	Black Locking Mechanism	
	RS197UCLGLG	Lime Green Leg/each			RS197UCLMFBK	Flat Black Locking Mechanism	
	RS197UCLGOR	Orange Leg/each			RS197UCLMBL	Blue Locking Mechanism	
	RS197UCLGGRAY	Gray Leg/each			RS197UCLMYE	Yellow Locking Mechanism	
	RS197UCLGWT	White Leg/each			RS197UCLMLG	Lime Green Locking Mechanism	
8	RS195UCCB	Set of 16 M8 x 20 Bolts, Washers, and Lock Washers (for casters)	1		RS197UCLMOR	Orange Locking Mechanism	
9	RS195CSM	Swivel Caster/each	2		RS197UCLMGRAY	Gray Locking Mechanism	
	RS195CSMBK	Flat Black 5" Swivel Caster/each	2		RS197UCLMWT	White Locking Mechanism	
10	RS195LCSM	Swivel Caster with Lock/each	2	21L	MB197UCLST	Red Left Sliding Top with Paper Storage	2
	RS195LCSMBK	Flat Black 5" Swivel Caster with Lock/each			MB197UCLSTBK	Black Left Sliding Top with Paper Storage	
11	RSBKT	Bracket for Paper Storage Area	4		MB197UCLSTFBK	Flat Black Left Sliding Top with Paper Storage	
12	** RS190UCDH	Chrome Drawer Handle/each	3		MB197UCLSTBL	Blue Left Sliding Top with Paper Storage	
	** RS190UCDHBK	Black Drawer Handle/each			MB197UCLSTYE	Yellow Left Sliding Top with Paper Storage	
13	RS190UCBP	Set of 4 Bumpers	1		MB197UCLSTLG	Lime Green Left Sliding Top with Paper Storage	
14	RS197LK	Chrome Lock with Keys			MB197UCLSTOR	Orange Left Top with Paper Storage	
	RS197LKBK	Black Lock with Keys	2		MB197UCLSTGRAY	Gray Left Sliding Top with Paper Storage	
15	RSSCDR	Red Spray Can Divider		21R	MB197UCLSTWT	White Left Sliding Top with Paper Storage	
	RSSCDBK	Black Spray Can Divider			MB197UCST	Red Right Sliding Top with Paper Storage	2
	RSSCDFBK	Flat Black Spray Can Divider			MB197UCSTBK	Black Right Sliding Top with Paper Storage	
	RSSCDBL	Blue Spray Can Divider			MB197UCSTFBK	Flat Black Right Sliding Top with Paper Storage	
	RSSCDY	Yellow Spray Can Divider			MB197UCSTBL	Blue Right Sliding Top with Paper Storage	
	RSSCDLG	Lime Green Spray Can Divider			MB197UCSTYE	Yellow Right Sliding Top with Paper Storage	
	RSSCDOR	Orange Spray Can Divider			MB197UCSTLG	Lime Green Right Sliding Top with Paper Storage	
	RSSCDGRAY	Gray Spray Can Divider			MB197UCSTOR	Orange Right Top with Paper Storage	
	RSSCDWT	White Spray Can Divider			MB197UCSTGRAY	Gray Right Sliding Top with Paper Storage	
16	MBD197UC1	Red 3" Drawer	2	30	MB197UCSTWT	White Right Sliding Top with Paper Storage	
	MBD197UC1BK	Black 3" Drawer			RS197UC3LK	3 Piece Drawer Liner Kit	1
	MBD197UC1FBK	Flat Black 3" Drawer			RS197UC4LK	4 Piece Liner Kit (incl. liners for sliding tops, top compartment and bottom shelf)	1
	MBD197UC1BL	Blue 3" Drawer		31	MBC190UCC	Cart Cover	1
	MBD197UC1YE	Yellow 3" Drawer		32	RS197ULR	U-shaped locking rod with 2 springs	1
	MBD197UC1LG	Lime Green 3" Drawer		Also available:			
	MBD197UC1OR	Orange 3" Drawer			RS197UCHCBK	Flat Black Hub Cap	
	MBD197UC1GRAY	Gray 3" Drawer			RSSCPK	Service Cart Polishing Kit	
	MBD197UC1WT	White 3" Drawer			RS195SL	Roller Bearing Slides with 2 #6 Screws for Drawer/pair	
17	MBD197UC2	Red 6" Drawer	1		RS89DET8PK	Detents for Roller Bearing Slides (Pack of 8)	
	MBD197UC2BK	Black 6" Drawer			RS195SLT	Roller Bearing Slides with 15 Steel Rivets for Sliding Top/pair	
	MBD197UC2FBK	Flat Black 6" Drawer			R SMB190UCMLP	MAC Logo Plate	
	MBD197UC2BL	Blue 6" Drawer			RSDOMELOGOWT	White MAC TOOLS Logo Decal	
	MBD197UC2YE	Yellow 6" Drawer			RSDOMELOGOBK	Black MAC TOOLS Logo Decal	
	MBD197UC2LG	Lime Green 6" Drawer		L-Shaped hex key included for adjusting the tension on the RSBKT bracket (item #11)			
	MBD197UC2OR	Orange 6" Drawer		Optional: MB190UCRC Rigid Caster/each.			
	MBD197UC2GRAY	Gray 6" Drawer		(If using these casters, it is also necessary to purchase RS190UCBK3 Bolt Kit for four casters).			
	MBD197UC2WT	White 6" Drawer		** If serial number of cart begins with "F", order RS197UCDH for chrome drawer handle and RS197UCDHBK for black drawer handle.			
18	MBS197UC	Red Bottom Shelf	1				
	MBS197UCBK	Black Bottom Shelf					