



JT-FTS

40-GALLON CAPACITY (DRY TANK)  
FUEL TANK SADDLE ADAPTER

OWNER'S MANUAL



SPECIFICATIONS

Capacity.....Up to 40-Gallon Empty Fuel Tank

Overall Length.....24-1/2"

Overall Width.....15"

Overall Height .....7-3/16"

Tie Down Length.....8'

Saddle Adjustments:

Pad Length.....24-1/2" to 39-3/4"

Pad Width.....15" to 19"

Pad Height .....7-3/16" to 11"

Shipping Weight .....52-Lbs.

## WARNING INFORMATION

THIS INSTRUCTION MANUAL USES THE FOLLOWING SYMBOLS AND DEFINITIONS TO ALERT YOU TO HAZARDOUS CONDITIONS WHICH MAY CREATE A RISK OF PERSONAL INJURY AND/OR PROPERTY DAMAGE.



This is the safety alert symbol. It is used to alert you to potential personal injury hazards. Obey all safety messages that follow this symbol to avoid possible injury or death.

### WARNING

**WARNING:** Indicates a hazardous situation which, if not avoided, could result in death or serious injury.



### IMPORTANT: READ THESE INSTRUCTIONS BEFORE OPERATING

**BEFORE USING THIS DEVICE, READ THIS MANUAL COMPLETELY AND THOROUGHLY, UNDERSTAND ITS OPERATING PROCEDURES, SAFETY WARNINGS AND MAINTENANCE REQUIREMENTS. SAVE THESE INSTRUCTIONS.**

It is the responsibility of the owner to make sure all personnel read this manual prior to using this fuel tank adapter. It is also the responsibility of the jack owner to keep this manual intact and in a convenient location for all to see and read. If the manual or product labels are lost or not legible, contact Mac Tools for replacements. If the operator is not fluent in English, the product and safety instructions shall be read to and discussed with the operator in the operator's native language by the purchaser/owner or his designee, making sure that the operator comprehends its contents.

### WARNING

This product is intended only for the use on underhoist transmission jacks for the removal, installation, and moving of emptied automotive gas tanks. Do not use or modify this product for any other purpose than that for which it was designed without consulting the manufacturer's authorized representative. The use of portable automotive lifting devices and applicable attachments, adapters and accessories are subject to certain hazards that cannot be prevented by mechanical means, but only by the exercise of intelligence, care, and common sense. It is therefore essential to have owners and personnel involved in the use and operation of the equipment who are careful, competent, trained, and qualified in the safe operation of the equipment and its proper use. Examples of hazards are dropping, tipping or slipping of loads caused primarily by improperly securing loads, overloading, off-centered loads, use on other than hard level surfaces, and using equipment for a purpose for which it was not designed.

## METHODS TO AVOID HAZARDOUS SITUATIONS

### WARNING



- Read, study, understand and follow all instructions before operating this device
- Wear eye protection that meets ANSI Z87.1 and OSHA standards (users and bystanders)
- Read the appropriate vehicle service manual for instructions and procedures on fuel tank removal and installation
- Always have an approved fire extinguisher accessible for immediate use. Never use this device near people smoking, open flames, heat sources or sparks
- Consult the device's owner's manual for instructions on grounding requirements for metal tanks before performing any work
- Always drain the fuel tank into a grounded storage container before removal or installation
- Make sure the fuel tank is centered and balanced on the adapter and jack before removal or installation
- Always secure the fuel tank to this device with the tie-down straps provided before moving the fuel tank
- The fuel tank may only be transported when the jack has been retracted to its lowest position
- Do not use or modify this product for any other purpose than that for which it was designed without consulting the manufacturer's authorized representative
- Product is to be used only with compatible ASME PASE products.
- Failure to heed these warnings may result in serious or fatal personal injury and/or property damage



**WARNING:** This product can expose you to chemicals including nickel which is known to the State of California to cause cancer and birth defects or other reproductive harm. For more information go to [www.P65Warnings.ca.gov](http://www.P65Warnings.ca.gov).

## CONSEQUENCES OF NOT AVOIDING HAZARDOUS SITUATIONS

### WARNING

Failure to read this manual completely and thoroughly, failure to understand its OPERATING INSTRUCTIONS, SAFETY WARNINGS, MAINTENANCE INSTRUCTIONS and comply with them, and failure to comply with the METHODS TO AVOID HAZARDOUS SITUATIONS could cause accidents resulting in serious or fatal personal injury and/or property damage.

## 40-GALLON CAPACITY (DRY TANK) FUEL TANK SADDLE ADAPTER

### FUEL TANK SADDLE ADAPTER SETUP INSTRUCTIONS

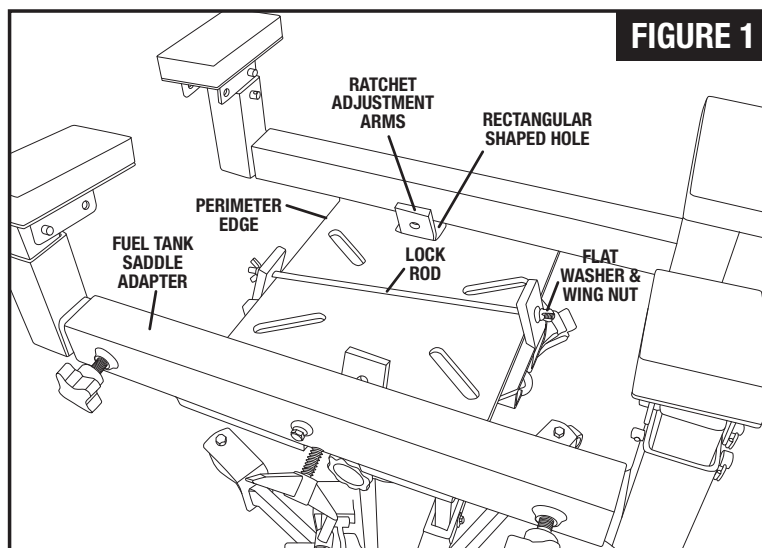
#### **⚠ WARNING**

Failure to follow these Fuel Tank Saddle Adapter Setup Instructions may result in serious injury or death, and/or property damage.

1. Refer to the exploded view drawing on page 5 to identify jack components.
2. Install the arm assemblies (#13) in the base assembly (#12) as shown in the exploded view drawing on page 5. Secure them in place by screwing in the locking knobs (#11) as shown in the drawing.
3. Install the height adjustment tubes (#15) in the arm assemblies (#13) and secure them to the arm assemblies at the desired height with the detent pins (#14).
4. The support pad assemblies (#16) have two mounting locations which enable the pads to be located in towards the center of the adapter or further away from the center of the adapter depending on the fuel tank size and configuration. Secure the support pad assemblies (#16) to the top holes of the height adjustment tubes (#15) with the detent pins (#14).
5. Feed the ground screw (#7) through the flat washer (#4), the electrical connector ends of both ground wires (#2), and through hex nut (#5), and tighten the ground screw (#7) in the base assembly (#12). It may be necessary to tighten the nut (#5) up against the electrical connectors to ensure the connectors are not loose.

### INSTALLING THE FUEL TANK SADDLE ADAPTER ON UNDERHOIST TRANSMISSION JACKS

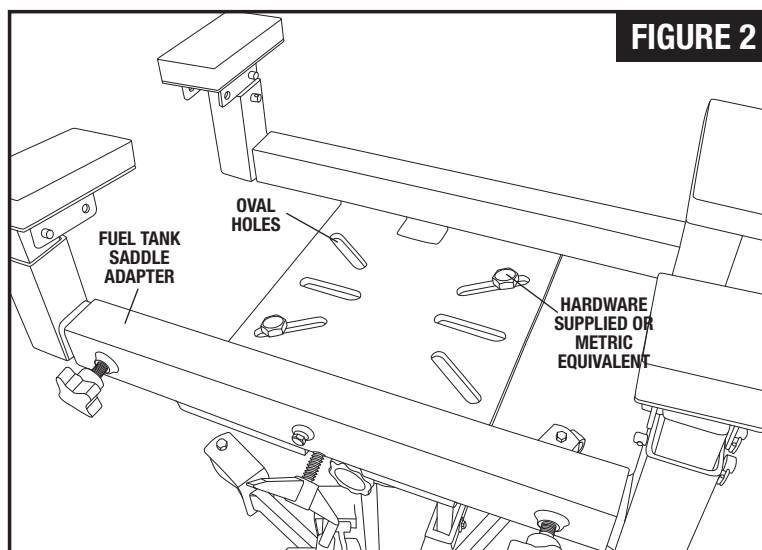
This saddle adapter is designed to fit on three types of transmission jack saddles.



**FIGURE 1**

#### TYPE 1

The Mac Tools model JSTT1000 and JSTTA1000 are equipped with the popular ratchet adjustment arms in their saddles. See figure 1. The center of the saddle adapter has two rectangular shaped holes to accept two of the ratchet arms, and the opposite ratchet arms will fit against the perimeter edge of the center portion of the saddle adapter. Center the saddle adapter on the jack's saddle and tighten the jack's ratchet arms against the adapter. The lock rod (#6) can be fed through the holes at the top of two of the ratchet arms and secured with the flat (#4) washers and wing nuts (#3) as shown in figure 1. This secures the saddle adapter to the jack's saddle.

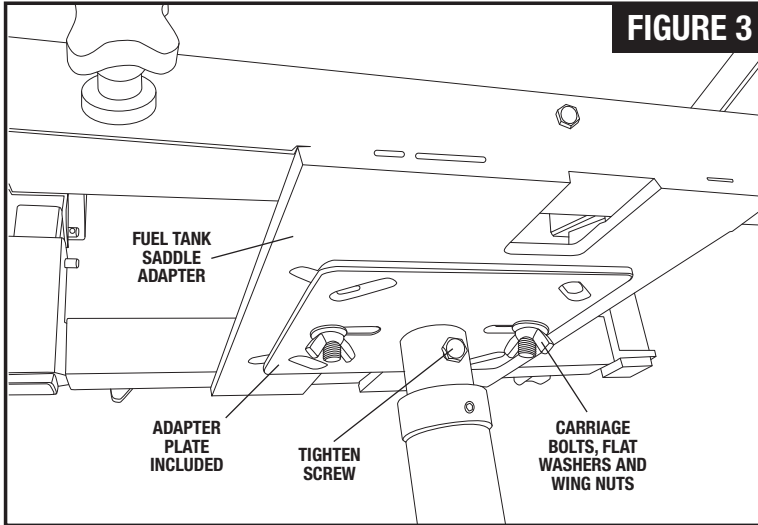


**FIGURE 2**

#### TYPE 2

Some transmission jacks are equipped with flat saddles with arms that can be temporarily removed. See Figure 2. The saddle adapter can be placed on the top of the jack's flat saddle and centered in a position where the oval holes in the saddle adapter align with two hole locations in the jack's saddle. The two hole locations should be directly across from each other so the jack's saddle and saddle adapter can be secured together with the two carriage bolts (#8), flat washers (#17) and wing nuts (#18) provided. If the provided hardware will not work, use grade 5 hardware or the metric equivalent to secure the two plates together.

## JT-FTS 40-GALLON CAPACITY (DRY TANK) FUEL TANK SADDLE ADAPTER



### TYPE 3

Some jacks will have to have their stock saddles removed and replaced with the adapter plate (#10) included with the saddle adapter. The adapter plate (#10) is secured to the jack's ram by tightening the screw (#9) at the base of the adapter plate (#10). See Figure 3. Follow the assembly instructions for TYPE 2 jacks to secure the saddle adapter to the adapter plate.

## OPERATING INSTRUCTIONS

**⚠ WARNING** Failure to follow these Operating Instructions may result in serious injury or death, and/or property damage.

1. Prepare the fuel tank for removal according to the appropriate vehicle service manual instructions and procedure. Drain the fuel tank into a grounded storage container.
2. Pump the jack up so the fuel tank saddle adapter is close but not touching the vehicle's fuel tank. Attach the alligator clamp at the end of one ground wire to the transmission jack. Attach the alligator clamp at the end of the other ground wire to the lift that is supporting the vehicle.

**⚠ WARNING** Risk of fire or explosion.

**PROPER GROUNDING IS ACCOMPLISHED WITH THE ALLIGATOR CLAMPS AFFIXED TO NON-PAINTED OR NON-COATED PARTS. THE LIFT SUPPORTING THE VEHICLE MUST ALSO BE GROUNDED TO THE EARTH.**

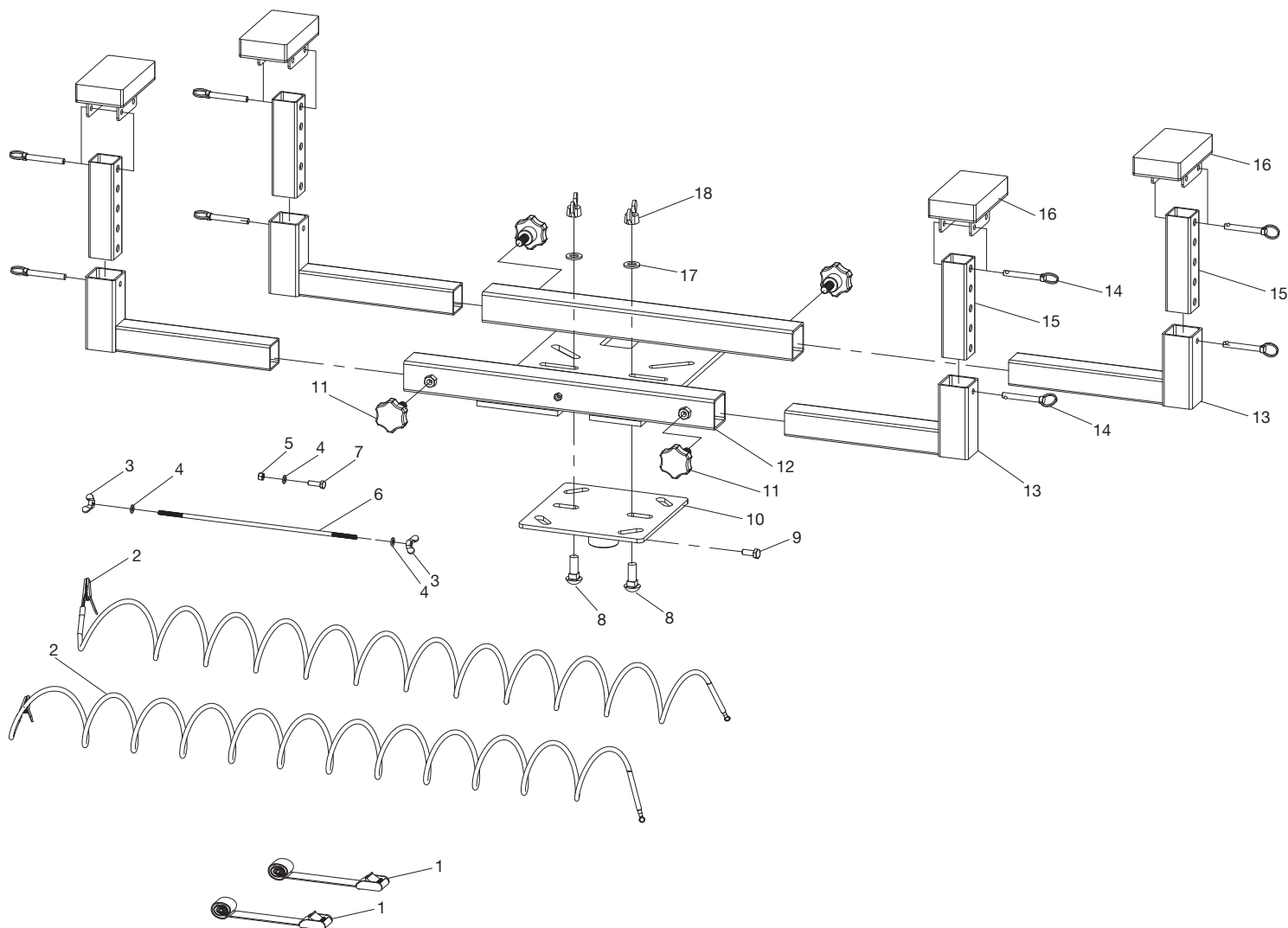
3. Adjust the saddle adapter's arm assemblies, height adjustment tubes and support pad assemblies to fit the fuel tank configuration, and then center and balance the tank on the saddle adapter.
4. Raise the jack so the saddle adapter makes contact with the fuel tank, and make final adjustments. Make sure the locking knobs are tight and detent pins are inserted completely through their corresponding tubes.
5. Secure the fuel tank to the saddle adapter by wrapping the two tie-down straps completely around the tank and saddle. Insert the tie-down straps through their buckles and pull them tight.
6. Make sure the tank is free to be lowered all the way down and there are not obstructions. The jack must be lowered all the way before the tank can be transported.

## PREVENTATIVE MAINTENANCE

**⚠ WARNING** Failure to follow these Preventative Maintenance instructions may result in serious injury or death, and/or property damage.

1. Always store the fuel tank saddle adapter in a well protected area where it will not be exposed to inclement weather, corrosive vapors, abrasive dust, or any other harmful elements. The fuel tank saddle adapter must be cleaned of water, snow, sand, grit, oil, grease or other foreign matter before using.
2. Every fuel tank saddle adapter owner is responsible for keeping the adapter labels clean and readable. Use a mild soap solution to wash external surfaces of the adapter.
3. Do not attempt to make any repairs unless you are a qualified repair person that is familiar with this equipment. Do not use the fuel tank saddle adapter if it is damaged, cracked, broken or missing parts. Take it out of service until replaced or properly repaired by an authorized service center.

### PARTS DIAGRAM



Item No.	Part No.	Description	Qty.	Item No.	Part No.	Description	Qty.
1	RS770601	Tie Down	2	10	RS770403	Adapter Plate	1
2	RS770602	Ground Wire	2	11	RS770611	Locking Knob	4
3	*	Wing Nut (M6)	2	12		Base Assembly	1
4	*	Flat Washer	3	13		Arm Assembly	4
5	*	Hex Nut (M6)	1	14	*	Detent Pin	8
6	*	Lock Rod	1	15		Height Adjustment Tube	4
7	*	Ground Screw (M6)	1	16	RS770616	Support Pad Assembly	4
8	*	Carriage Bolt (M12)	2	17	*	Flat Washer	2
9	*	Screw (M8)	1	18	*	Wing Nut (M12)	2

\* Available in Bolt Kit, RS7706BK (Incl. 32 each of #5 and 6, and 16 of #7).

Also available: Label Kit, RSJTFTSLK (not shown). Only items identified by part number are available for purchase.



## **JT-FTS** **40-GALLON CAPACITY (DRY TANK)** **FUEL TANK SADDLE ADAPTER**

### **LIMITED WARRANTY**

---

**MAC TOOLS WARRANTS TO ITS CUSTOMERS THAT THE COMPANY'S MAC TOOLS BRANDED PRODUCTS ARE FREE FROM DEFECTS IN WORKMANSHIP AND MATERIALS.**

Mac Tools will repair or replace its Mac Tools branded products which fail to give satisfactory service due to defective workmanship or materials, based upon the terms and conditions of the following described warranty plans attributed to that specific product. This product carries a ONE-YEAR warranty. During this warranty period, Mac Tools will repair or replace at our option any part or unit which proves to be defective in material or workmanship.

**Other important warranty information:**

This warranty does not cover damage to equipment or tools arising from alteration, abuse, misuse, damage and does not cover any repairs or replacement made by anyone other than Mac Tools. The foregoing obligation is Mac Tools sole liability under this or any implied warranty and under no circumstances shall we be liable for any incidental or consequential damages.

**Note:** Some states do not allow the exclusion or limitation of incidental or consequential damages, so the above limitation or exclusion may not apply to you. If you have any questions about warranty service, please contact Mac Tools. This warranty gives you specific legal rights and you may also have other rights which vary from state to state.