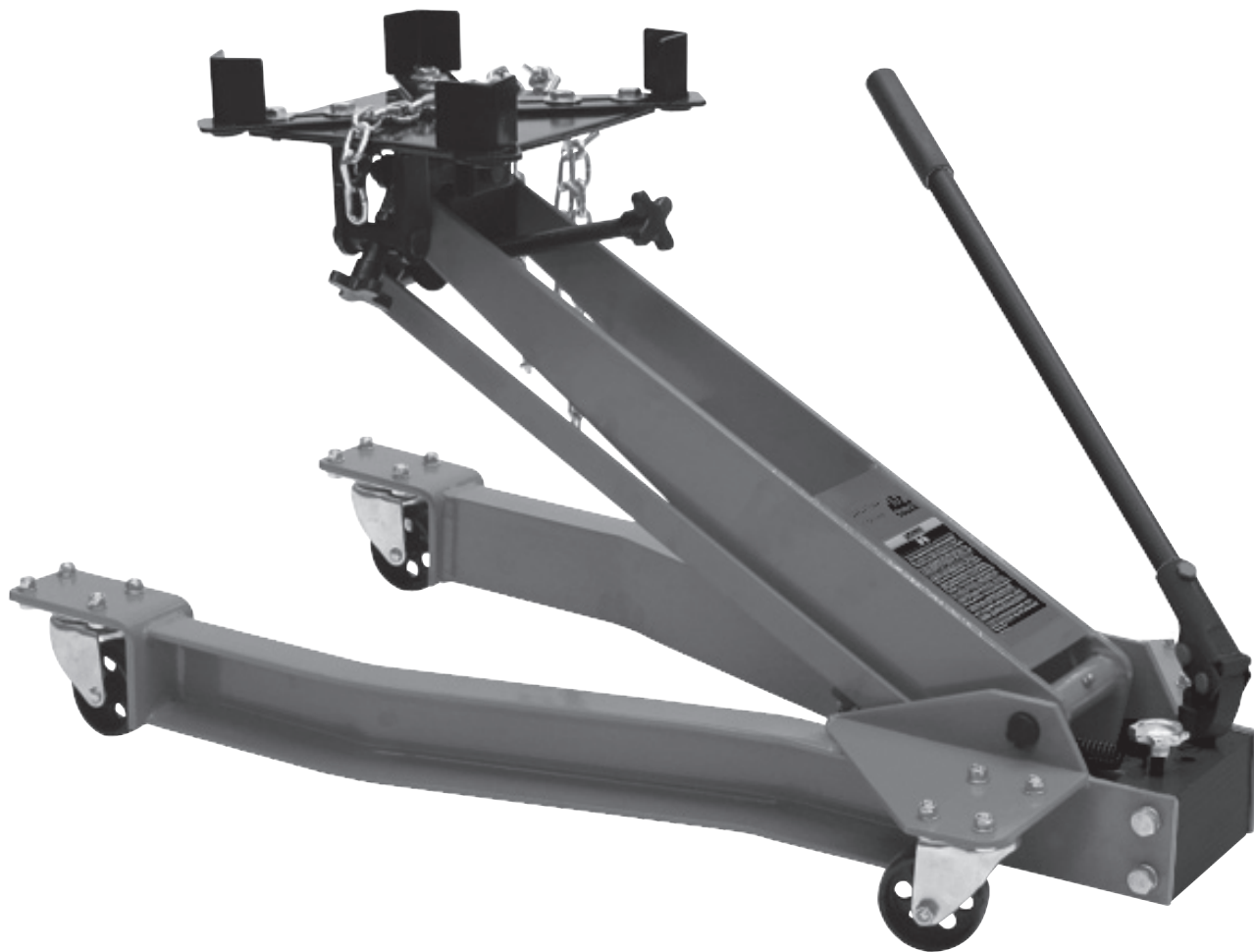




**JSTLP1100**  
**1100-LBS. CAPACITY**  
**LOW PROFILE TRANSMISSION JACK**

**OWNER'S MANUAL**



**SPECIFICATIONS**

Maximum Capacity.....	1100-Lbs.
Minimum Height.....	6"
Maximum Height .....	31.5"
Saddle Tilt Fore and Aft.....	56° by 10°
Saddle Tilt Side to Side .....	+10°, -15°
Length.....	37"
Overall Width.....	18.75"
Weight.....	116.6-Lbs.



Copyright © Professional Tool Products, 2015  
All rights reserved

## WARNING INFORMATION

THIS INSTRUCTION MANUAL USES THE FOLLOWING SYMBOLS AND DEFINITIONS TO ALERT YOU TO HAZARDOUS CONDITIONS WHICH MAY CREATE A RISK OF PERSONAL INJURY AND/OR PROPERTY DAMAGE.



This is the safety alert symbol. It is used to alert you to potential personal injury hazards. Obey all safety messages that follow this symbol to avoid possible injury or death.

### WARNING

**WARNING:** Indicates a hazardous situation which, if not avoided, could result in death or serious injury.



### IMPORTANT: READ THESE INSTRUCTIONS BEFORE OPERATING

**BEFORE USING THIS DEVICE, READ THIS MANUAL COMPLETELY AND THOROUGHLY, UNDERSTAND ITS OPERATING PROCEDURES, SAFETY WARNINGS AND MAINTENANCE REQUIREMENTS. SAVE THESE INSTRUCTIONS.**

It is the responsibility of the owner to make sure all personnel read this manual prior to using this jack. It is also the responsibility of the jack owner to keep this manual intact and in a convenient location for all to see and read. If the manual or product labels are lost or not legible, contact Mac Tools for replacements. If the operator is not fluent in English, the product and safety instructions shall be read to and discussed with the operator in the operator's native language by the purchaser/owner or his designee, making sure that the operator comprehends its contents.

### WARNING

This product is intended only for use in the removal, repair, and installation of vehicle transmissions. Do not use or modify this product for any other purpose than that for which it was designed without consulting the manufacturer's authorized representative. The use of portable automotive lifting devices are subject to certain hazards that cannot be prevented by mechanical means, but only by the exercise of intelligence, care, and common sense. It is therefore essential to have owners and personnel involved in the use and operation of the equipment who are careful, competent, trained, and qualified in the safe operation of the equipment and its proper use. Examples of hazards are dropping, tipping or slipping of loads caused primarily by improperly securing loads, overloading, off-centered loads, use on other than hard level surfaces, and using equipment for a purpose for which it was not designed.

## METHODS TO AVOID HAZARDOUS SITUATIONS

### WARNING



- Read, study, understand and follow all instructions before operating this device
- Inspect the jack before each use. Do not use jack if damaged, altered, modified, in poor condition, leaking hydraulic fluid, or unstable due to loose or missing components. Make corrections before using
- Consult the vehicle manufacturer for the transmission's center of balance
- Secure the transmission to the jack's saddle with the anchorage restraint system provided before raising or lowering the transmission
- Center load on saddle. Be sure setup is stable before working on vehicle
- Support the engine with a stand before unbolting the transmission from the engine
- Wear eye protection that meets ANSI Z87.1 and OSHA standards (users and bystanders)
- Do not use jack beyond its rated capacity. Do not shock load
- Use only on a hard level surface
- Adequately support the vehicle before starting repairs
- Use of this product is limited to the removal, installation and transportation in the lowered position, of transmissions, transfer cases and transaxles
- Do not use any adapters unless approved or supplied by Mac Tools
- Always lower the jack slowly and carefully
- Do not use or modify the product for any other purpose than that for which it was designed without consulting the manufacturer's authorized representative.
- This product may contain one or more chemicals known to the State of California to cause cancer and birth defects or other reproductive harm. *Wash hands thoroughly after handling*
- Failure to heed these warnings may result in serious or fatal personal injury and/or property damage

## CONSEQUENCES OF NOT AVOIDING HAZARDOUS SITUATIONS

### WARNING

Failure to read this manual completely and thoroughly, failure to understand its OPERATING INSTRUCTIONS, SAFETY WARNINGS, MAINTENANCE INSTRUCTIONS and comply with them, and failure to comply with the METHODS TO AVOID HAZARDOUS SITUATIONS could cause accidents resulting in serious or fatal personal injury and/or property damage.



# JSTLP1100

## 1100-LBS. CAPACITY

### LOW PROFILE TRANSMISSION JACK

#### SETUP INSTRUCTIONS

---

**⚠ WARNING** Failure to follow these Setup Instructions may result in serious injury or death, and/or property damage.

1. Refer to the exploded view drawing on page 5 to identify jack components.
2. Secure the fingers (#16) to the saddle plate (#12) with the hex bolts (#14) and washers (#15).
3. Secure the chain (#13) to the saddle plate (#12) according to the drawing on page 5.
4. Secure the handle (#44) in the hydraulic unit (#35) with the bolt (#31).
5. Air may get trapped in the hydraulic system during freight and handling.

#### PURGING AIR FROM THE HYDRAULIC SYSTEM:

- a. Rotate the release valve knob (#36) at the top of the hydraulic block in a clockwise direction until tight. Now turn it in a counterclockwise direction two full turns.
- b. Activate the handle (#44) about 15 times.
- c. Rotate the knob at the top of the hydraulic block in a clockwise direction until tight.
- d. Activate the hand pump until the lift arm is raised to maximum height. You should experience a full pump stroke with each incremental pump.
- e. Repeat steps "a" through "d" until all air is purged from the system.

#### OPERATING INSTRUCTIONS

---

**⚠ WARNING** Failure to follow these Operating Instructions may result in serious injury or death, and/or property damage.

1. Lift the vehicle to the desired work height, and support the vehicle in accordance with the lift manufacturer's recommended lifting and support procedures.
2. Position the transmission jack directly under the transmission. Turn the release valve knob (#36) all the way in a clockwise direction until it stops. Pump the handle (#44), and the saddle assembly will start to rise. Raise the saddle to a height very close to the center of balance point of the transmission, but do not touch the transmission.
3. Loosen the four bolts that secure the four fingers to the saddle. The fingers can be adjusted in and out to help position the transmission on the saddle. Now gently raise the saddle so it supports the transmission. Adjust the four fingers in position against the transmission, and tighten. Fore and aft saddle tilt adjustments are sometimes necessary to properly position the transmission on the saddle. Side to side tilt positioning may be necessary for the same reason and can be accomplished by activating the side to side tilt knob.
4. The chains should be pulled over the center of balance portion of the transmission and secured on the chain hook. Rotate the wing nut to take up the slack in the chain and secure the transmission to the saddle.
5. Remove the transmission from the engine according to instructions in the vehicle service manual.
6. Once the transmission has been disconnected from the engine, very slowly turn the jack's release valve knob (#36) in a counterclockwise direction to make sure the jack's saddle and transmission do not hang up on any undercar components, wiring, fuel lines, etc. Continue to lower the jack all the way down.
7. Remember to secure the transmission to the saddle before removing and installing, and follow the vehicle manufacturer's instructions.



# JSTLP1100

## 1100-LBS. CAPACITY

### LOW PROFILE TRANSMISSION JACK

#### PREVENTATIVE MAINTENANCE

**⚠ WARNING** Failure to follow these Preventative Maintenance instructions may result in serious injury or death, and/or property damage.

1. Always store the jack in a well protected area where it will not be exposed to inclement weather, corrosive vapors, abrasive dust, or any other harmful elements. The jack must be cleaned of water, snow, sand, grit, oil, grease or other foreign matter before using.
2. The jack must be lubricated periodically in order to prevent premature wearing of parts. A general purpose grease must be applied to all zerk grease fittings, caster wheels, elevator arm, handle base pivot bolts, release mechanism and all other bearing surfaces. Jacks found to be defective due to worn parts resulting from inadequate or no lubrication are not eligible for warranty consideration.
3. It should not be necessary to refill or top off the reservoir with hydraulic fluid unless there is an external leak. An external leak requires immediate repair which must be performed in a dirt-free environment by qualified hydraulic repair personnel who are familiar with this equipment.

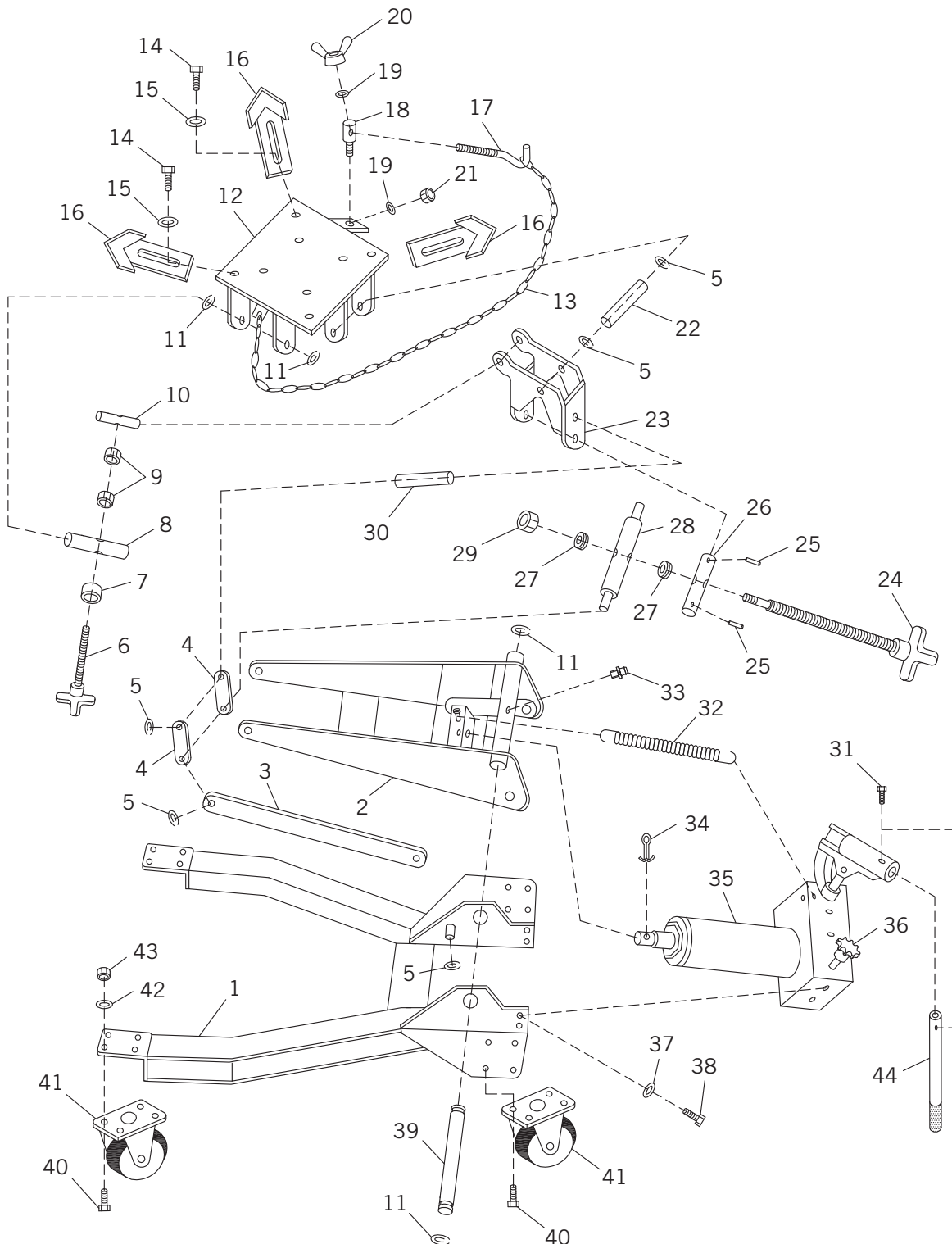
**⚠ WARNING** In order to prevent seal damage and jack failure, never use alcohol, hydraulic brake fluid or transmission oil in the jack. Use Chevron Hydraulic Oil AW ISO 32 or its equivalent Unocal Unax AW150.

4. Every jack owner is responsible for keeping the jack labels clean and readable. Use a mild soap solution to wash external surfaces of the jack but not any moving hydraulic components. Contact Mac Tools for a replacement label if your jack's label is unreadable.
5. Inspect the jack before each use. Do not use the jack if any component is cracked, broken, bent, shows sign of damage or leaks hydraulic fluid. Do not use the jack if it has loose or missing hardware or components, or is modified in any way. Take corrective action before using the jack again.
6. Do not attempt to make any hydraulic repairs unless you are a qualified hydraulic repair person that is familiar with this equipment. Repairs must be performed by an authorized service center.

#### TROUBLESHOOTING

PROBLEM	ACTION
1. Unit will not lift rated load.	Purge air from hydraulic system by following procedure under SETUP.
2. Unit will not sustain rated load or feels "spongy" under rated load.	Purge air from hydraulic system as above.
3. Unit will not lift to full height.	Purge air from hydraulic system as above.
4. Handle tends to raise up while the unit is under rated load.	Pump the handle rapidly several times to push oil past ball valves in power unit.
5. Unit still does not operate.	Contact your Mac Tools Distributor.

## PARTS DIAGRAM





# JSTLP1100

## 1100-LBS. CAPACITY

### LOW PROFILE TRANSMISSION JACK

#### PARTS LIST

Item No.	Part No.	Description	Qty.	Item No.	Part No.	Description	Qty.
1		Main Frame	1	24	RS7750B24	Adj. Screw Assembly with Knob	
2	RS7750A02BR	Lift Arm	1			(forward) (incl. # 5 (2), 24, 25 (2),	
3	RS7750A03BR	Lift Arm Strap	2			26, 27 (2), 28, 29)	1
4	RS7750A04BK	Front Link	2	25	*	Spring Pin (4 x 28)	2
5	*	Snap Ring (18)	8	26	*	Forward Pivot/Front	1
6	RS7750A06	Adj. Screw Assembly with Knob (side)		27	*	Bearing (8101)	2
		(incl. #6, 7, 8, 9 (2), 10, 11 (2))	1	28	*	Forward Pivot/Back	1
7	*	Spacer	1	29	*	Lock Nut (M10)	1
8	*	Side Pivot/Front	1	30	*	Forward Pivot Shaft	1
9	*	Hex Nut (M12)	2	31	*	Hex Cap Bolt (M8 x 20)	1
10	*	Side Pivot/Back	1	32	RS7750A32	Return Spring	1
11	*	Snap Ring (22)	4	33		Grease Fitting (M6)	1
12	RS7750B12	Saddle Assembly (incl. #5-30)	1	34	*	Cotter Pin (4 x 50)	1
13	RS6648BK	Bolt (Chain) Kit (incl. #13, 14 (8),		35	RS7750A35BK	Hydraulic Unit Assembly (incl. #31,	
		15 (8), 17, 18, 19 (2), 20, 21)	1			34, 35, 36, 37 (4), 38 (4), 44)	1
14	*	Hex Bolt (M10 x 20)	8	36	RS7750A36	Release Valve Knob	1
15	*	Washer (10)	8	37	*	Lock Washer (12)	4
16	RS664606	Finger	4	38	*	Hex Cap Bolt (M12 x 30)	4
17	*	Hook	1	39	RS7750A39	Lift Arm Pivot Pin (incl. # 11 (2), 39)	1
18	*	Stud	1	40	**	Hex Cap Bolt (M8 x 20)	16
19	*	Washer (8)	2	41	RSSC301A	3" Swivel Caster	4
20	*	Wing Nut (M8)	1	42	**	Washer (8)	16
21	*	Hex Nut (M8)	1	43	**	Lock Nut (M8)	16
22	*	Side Pivot Shaft	1	44	RS7750A44BK	Handle	1
23	RS7750B23	Saddle Support Assembly			RSJSTLP1100PLK	Product Label Kit (not shown)	1
		(incl. #5 (4), 22, 23, 30)	1				

\* RS7750ASK - Seal Kit for Hydraulic Unit

\*\* RS305004WK - Wheel Kit (includes 8 each of #40, 42, and 43. Two kits required.)



**JSTLP1100**  
**1100-LBS. CAPACITY**  
**LOW PROFILE TRANSMISSION JACK**

**LIMITED WARRANTY**

---

**MAC TOOLS WARRANTS TO ITS CUSTOMERS THAT THE COMPANY'S MAC TOOLS BRANDED PRODUCTS ARE FREE FROM DEFECTS IN WORKMANSHIP AND MATERIALS.**

Mac Tools will repair or replace its Mac Tools branded products which fail to give satisfactory service due to defective workmanship or materials, based upon the terms and conditions of the following described warranty plans attributed to that specific product. This product carries a ONE-YEAR warranty. During this warranty period, Mac Tools will repair or replace at our option any part or unit which proves to be defective in material or workmanship.

**Other important warranty information:**

This warranty does not cover damage to equipment or tools arising from alteration, abuse, misuse, damage and does not cover any repairs or replacement made by anyone other than Mac Tools. The foregoing obligation is Mac Tools sole liability under this or any implied warranty and under no circumstances shall we be liable for any incidental or consequential damages.

**Note:** Some states do not allow the exclusion or limitation of incidental or consequential damages, so the above limitation or exclusion may not apply to you. If you have any questions about warranty service, please contact Mac Tools. This warranty gives you specific legal rights and you may also have other rights which vary from state to state.