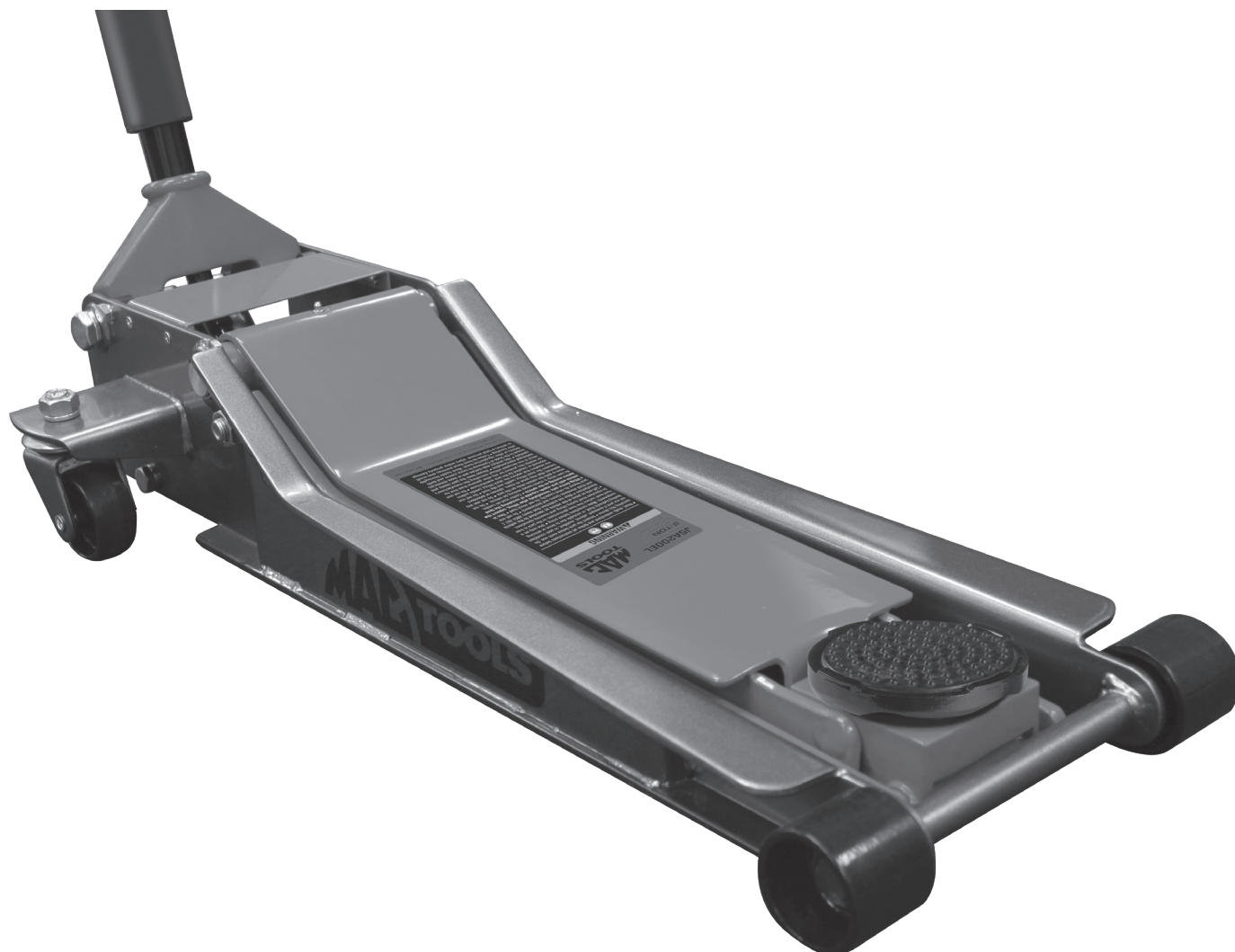




JSA200EL
2-TON CAPACITY
EXTRA LOW JACK

OWNER'S MANUAL



SPECIFICATIONS

| | |
|-----------------------|---------|
| Maximum Capacity..... | 2-Ton |
| Minimum Height..... | 2-3/4" |
| Maximum Height..... | 24" |
| Handle Length..... | 45-1/4" |
| Overall Length..... | 32-1/2" |
| Overall Width..... | 14-1/2" |
| Weight..... | 97-Lbs. |



© 2020 Mac Tools

WARNING INFORMATION

THIS INSTRUCTION MANUAL USES THE FOLLOWING SYMBOLS AND DEFINITIONS TO ALERT YOU TO HAZARDOUS CONDITIONS WHICH MAY CREATE A RISK OF PERSONAL INJURY AND/OR PROPERTY DAMAGE.



This is the safety alert symbol. It is used to alert you to potential personal injury hazards. Obey all safety messages that follow this symbol to avoid possible injury or death.

WARNING

WARNING: Indicates a hazardous situation which, if not avoided, could result in death or serious injury.



IMPORTANT: READ THESE INSTRUCTIONS BEFORE OPERATING

BEFORE USING THIS DEVICE, READ THIS MANUAL COMPLETELY AND THOROUGHLY, UNDERSTAND ITS OPERATING PROCEDURES, SAFETY WARNINGS AND MAINTENANCE REQUIREMENTS. SAVE THESE INSTRUCTIONS.

It is the responsibility of the owner to make sure all personnel read this manual prior to using this jack. It is also the responsibility of the jack owner to keep this manual intact and in a convenient location for all to see and read. If the manual or product labels are lost or not legible, contact Mac Tools for replacements. If the operator is not fluent in English, the product and safety instructions shall be read to and discussed with the operator in the operator's native language by the purchaser/owner or his designee, making sure that the operator comprehends its contents.

WARNING

This product is intended only for lifting automobiles. Do not use or modify this product for any other purpose than that for which it was designed without consulting the manufacturer's authorized representative. The use of portable automotive lifting devices are subject to certain hazards that cannot be prevented by mechanical means, but only by the exercise of intelligence, care, and common sense. It is therefore essential to have owners and personnel involved in the use and operation of the equipment who are careful, competent, trained, and qualified in the safe operation of the equipment and its proper use. Examples of hazards are dropping, tipping or slipping of loads caused primarily by improperly securing loads, overloading, off-centered loads, use on other than hard level surfaces, and using equipment for a purpose for which it was not designed.

METHODS TO AVOID HAZARDOUS SITUATIONS

WARNING



- Read, study, understand and follow all instructions before operating this device
- Inspect the jack before each use. Do not use jack if damaged, altered, modified, in poor condition, leaking hydraulic fluid, or unstable due to loose or missing components. Make corrections before using
- Use only on a hard level surface free from obstructions so the jack is free to reposition itself during lifting and lowering operations
- Lift only on areas of the vehicle as specified by the vehicle manufacturer
- Wear eye protection that meets ANSI Z87.1 and OSHA standards (users and bystanders)
- Do not use jack beyond its rated capacity. Do not shock load
- **This is a lifting device only. Immediately after lifting, support the vehicle with jack stands capable of sustaining the load before working on the vehicle**
- Center load on saddle. Be sure setup is stable before working on vehicle
- Do not move or dolly the vehicle while on the jack
- Do not use any materials that may serve as risers, spacers or extenders between the stock lifting saddle and the load
- Do not use any adapters that replace the stock lifting saddle unless approved or supplied by the jack manufacturer
- Do not use or modify this product for any other purpose than that for which it was designed without consulting the manufacturer's authorized representative
- Always lower the jack slowly and carefully
- Failure to heed these warnings may result in serious or fatal personal injury and/or property damage



WARNING: This product can expose you to chemicals including nickel which is known to the State of California to cause cancer and birth defects or other reproductive harm. For more information go to www.P65Warnings.ca.gov.

CONSEQUENCES OF NOT AVOIDING HAZARDOUS SITUATIONS

WARNING

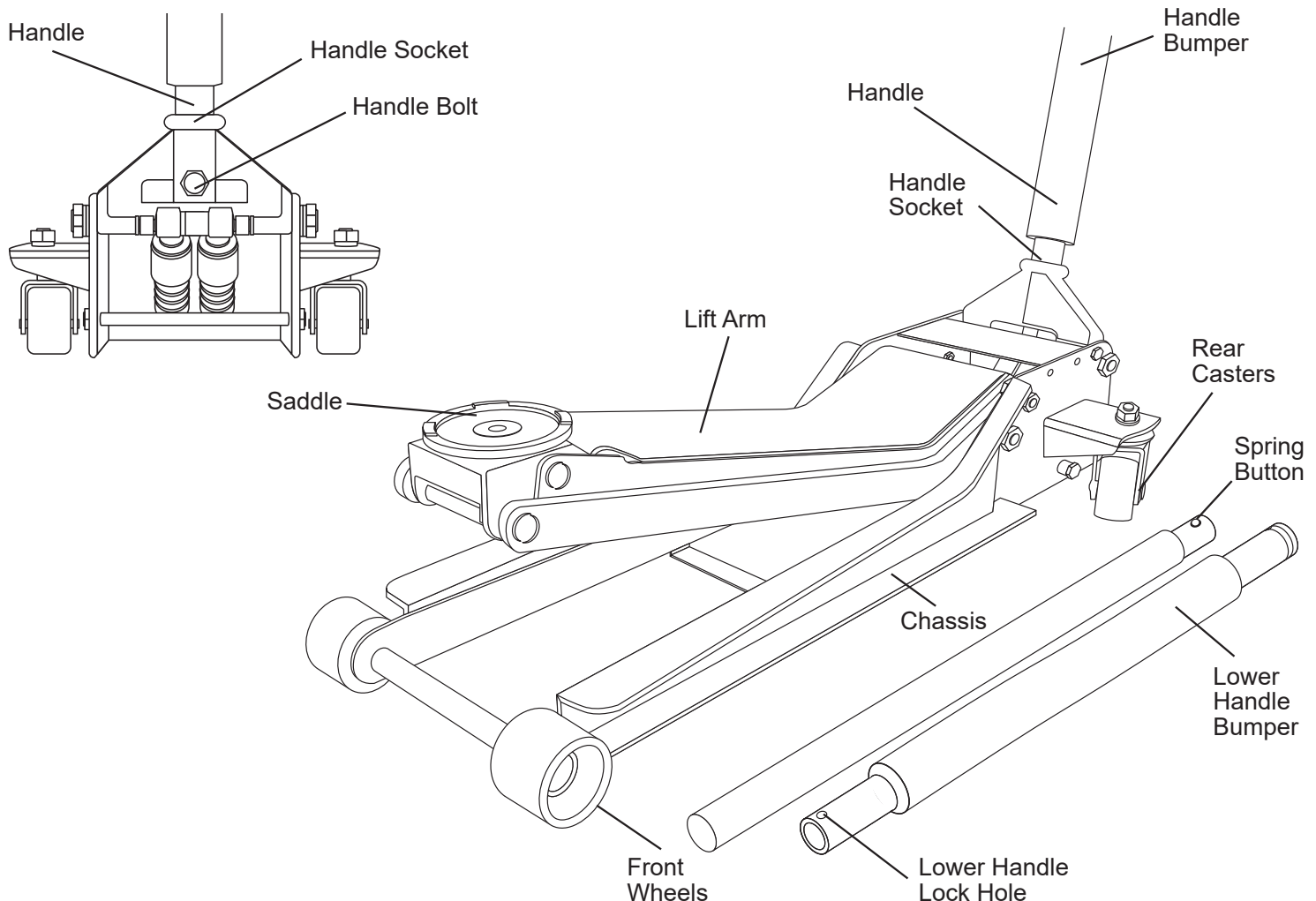
Failure to read this manual completely and thoroughly, failure to understand its OPERATING INSTRUCTIONS, SAFETY WARNINGS, MAINTENANCE INSTRUCTIONS and comply with them, and failure to comply with the METHODS TO AVOID HAZARDOUS SITUATIONS could cause accidents resulting in serious or fatal personal injury and/or property damage.

SETUP INSTRUCTIONS

⚠ WARNING

Failure to follow these Setup Instructions may result in serious injury or death, and/or property damage.

1. Refer to the exploded view drawing on page 7 to identify jack components.
2. Remove the 2-piece handle from box. Insert narrow portion of top section (#24) into bottom section (#26) and secure with the spring button.
3. Grease the inside of the handle yoke (#19) and remove the handle set screw (#18) from the yoke (#19). Insert the handle (#26) all the way in the handle yoke (#19) until it engages the universal joint assembly (#41). Secure the handle (#26) to the handle yoke (#19) with the handle set screw (#18).
4. Air may become trapped in the hydraulic system during shipping and handling. Trapped air will affect the pumping performance of the jack. If this occurs, follow the air purging procedure below:
 - a) Remove the oil fill screw.
 - b) With the lift arm assembly in its down position, look inside the oil fill screw hole. You should be able to see the top of the power unit's pressure cylinder. The hydraulic fluid level should be no higher than the top of the cylinder. Correct the fluid level if it is not at the proper height.
 - c) Pump the jack against a load that is at least 500-lbs. (225 Kgs). After the load is raised, slightly turn the pump handle in a counter clockwise rotation so the load is very slowly lowered. While the lift arm is lowering, quickly pump the handle 5 or 6 full incremental pump strokes. After pumping, lower the lift arm to its full rest position.
 - d) Install the oil fill screw. Rotate the handle in a clockwise rotation until tight and pump the lift arm to maximum height. Repeat steps "a" through "c" until all of the air has been purged from the system.





JSA200EL 2-TON CAPACITY EXTRA LOW JACK

OPERATING INSTRUCTIONS

⚠ WARNING Failure to follow these Operating Instructions may result in serious injury or death, and/or property damage.

1. Put vehicle transmission in park or in gear and then apply the emergency brake.
To raise load: Turn the handle in a clockwise direction until tight. Position the jack under the load. Proceed to pump the handle in order to raise the lift arm to the load. As the saddle at the end of the lift arm gets closer to the load, reposition the jack so the saddle will contact the load firmly and the load is centered on the saddle. Make sure the saddle is correctly positioned. Raise the load to the desired work height. Place jack stands of appropriate capacity at the vehicle manufacturers's recommended support areas that provide stable support for the raised vehicle. **DO NOT CRAWL UNDER VEHICLE WHILE LIFTING VEHICLE OR PLACING OR REMOVING THE JACK STANDS!** Once jack stands are positioned, turn the jack handle VERY SLOWLY in a counterclockwise direction to lower the load to rest on the jack stands. Inspect the relationship between the jack stands and load to make sure the setup is stable and safe. If the setup is not stable or safe, follow the preceding steps until corrected.
2. **To lower load:** Follow the procedures mentioned in "To raise load" section of the OPERATING INSTRUCTIONS in order to raise the load off the jack stands. Once the load has cleared the jack stands, remove the jack stands from under the load and away from the work area. Turn handle very slowly in a counterclockwise direction until the load is completely lowered to the ground. Once the jack's lifting saddle has cleared the load, remove the jack from under the load. **DO NOT CRAWL UNDER VEHICLE WHILE LIFTING VEHICLE OR PLACING OR REMOVING THE JACK STANDS!**
CAUTION: Keep hands and feet away from the hinge mechanism of the jack.

PREVENTATIVE MAINTENANCE

⚠ WARNING Failure to follow these Preventative Maintenance instructions may result in serious injury or death, and/or property damage.

1. Always store the jack in a well protected area where it will not be exposed to inclement weather, corrosive vapors, abrasive dust, or any other harmful elements. The jack must be cleaned of water, snow, sand, grit, oil, grease or other foreign matter before using.
2. The jack must be lubricated periodically in order to prevent premature wearing of parts. A general purpose grease must be applied to all zerk grease fittings, caster wheels, front axle, elevator arm, handle base pivot bolts, release mechanism and all other bearing surfaces. Worn parts resulting from inadequate or no lubrication are not eligible for warranty consideration. See page 5 for lubrication instructions.
3. It should not be necessary to refill or top off the reservoir with hydraulic fluid unless there is an external leak. An external leak requires immediate repair which must be performed in a dirt-free environment by an authorized service center.

⚠ WARNING In order to prevent seal damage and jack failure, never use alcohol, hydraulic brake fluid or transmission oil in the jack. Use hydraulic jack oil only.

4. Every jack owner is responsible for keeping the jack labels clean and readable. Use a mild soap solution to wash external surfaces of the jack but not any moving hydraulic components.
5. Inspect the jack before each use. Do not use the jack if any component is cracked, broken, bent, shows sign of damage or leaks hydraulic fluid. Do not use the jack if it has loose or missing hardware or components, or is modified in any way. Take corrective action before using the jack again.
6. Any hydraulic repairs within the warranty period must be performed by an authorized service center.

INSPECTION

⚠ WARNING Failure to follow these Inspection instructions may result in serious injury or death, and/or property damage.

Visual inspection should be made before each use of the jack, checking for leaking hydraulic fluid and damaged, loose or missing parts. Each jack must be inspected by a manufacturer's repair facility immediately if subjected to an abnormal load or shock. Any jack which appears to be damaged in any way, is found to be badly worn, or operates abnormally **MUST BE REMOVED FROM SERVICE** until necessary repairs are made by a manufacturer's authorized repair facility. It is recommended that an annual inspection of the jack be made by a manufacturer's authorized repair facility and that any defective parts, decals or warning labels be replaced with manufacturer's specified parts. A list of authorized repair facilities is available from the manufacturer.



JSA200EL 2-TON CAPACITY EXTRA LOW JACK

PROPER STORAGE

It is recommended that the jack be stored in a dry location with all wheels touching the ground on a relatively level surface.

TROUBLESHOOTING

Important: Service jacks are self-contained devices used for lifting, but not sustaining, a partial vehicular load. In accordance with ASME PASE-2019 Load Sustaining Test: "A load not less than the rated capacity...shall not lower more than 1/8" (3.18mm) in the first minute, nor a total of .1875" (4.76mm) in 10 minutes." Lowering within this range is considered normal operation and is NOT a warrantable defect.

| PROBLEM | ACTION |
|---|---|
| 1. Unit will not lift rated load. | Purge air from hydraulic system by following procedure under SETUP. |
| 2. Unit will not sustain rated load or feels "spongy" under rated load. | Purge air from hydraulic system as above. |
| 3. Unit will not lift to full height. | Purge air from hydraulic system as above. |
| 4. Handle tends to raise up while the unit is under rated load. | Pump the handle rapidly several times to push oil past ball valves in power unit. |
| 5. Unit still does not operate. | Contact your Mac Tools Distributor. |

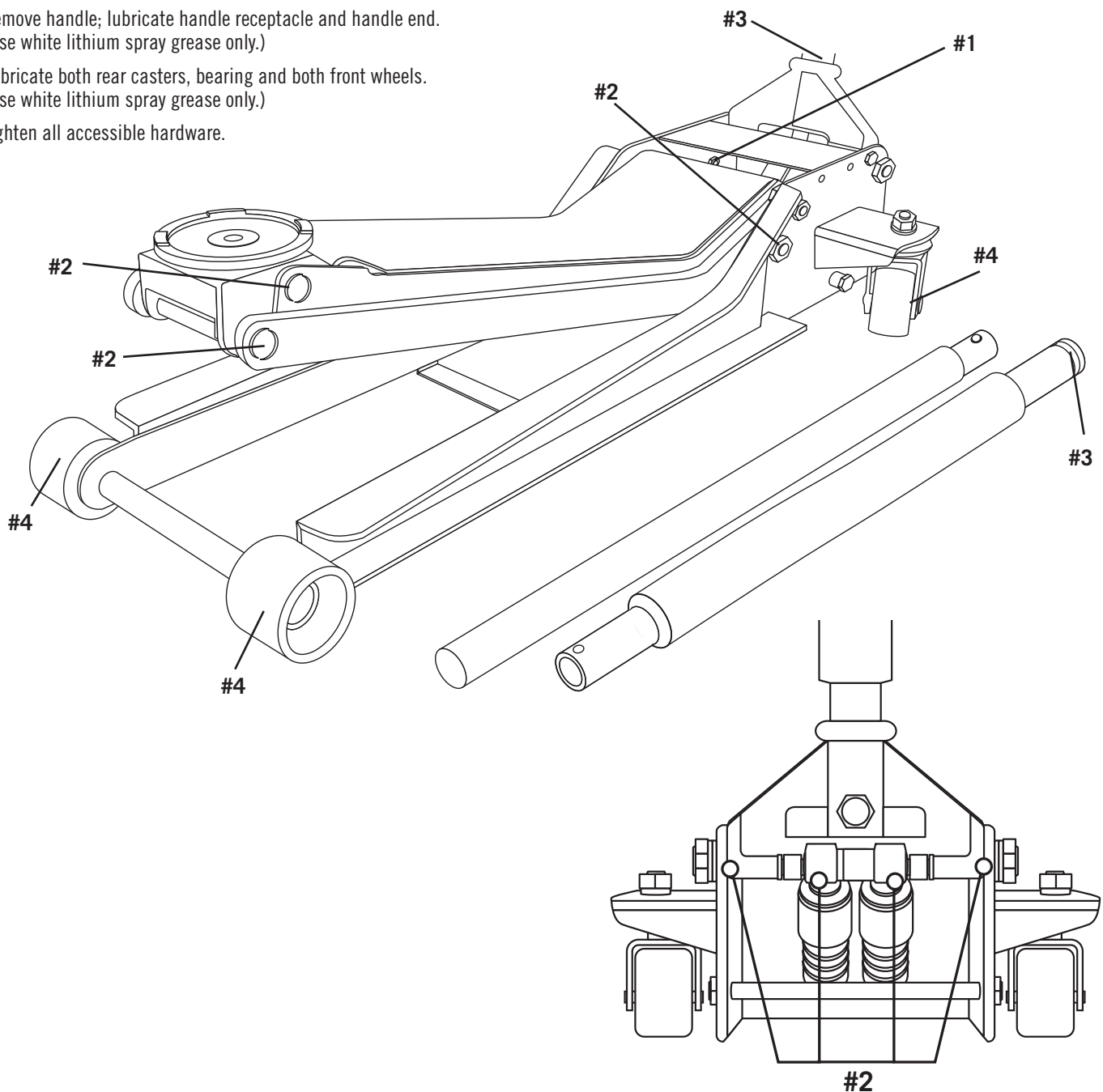
HYDRAULIC JACK MAINTENANCE GUIDE

⚠ WARNING

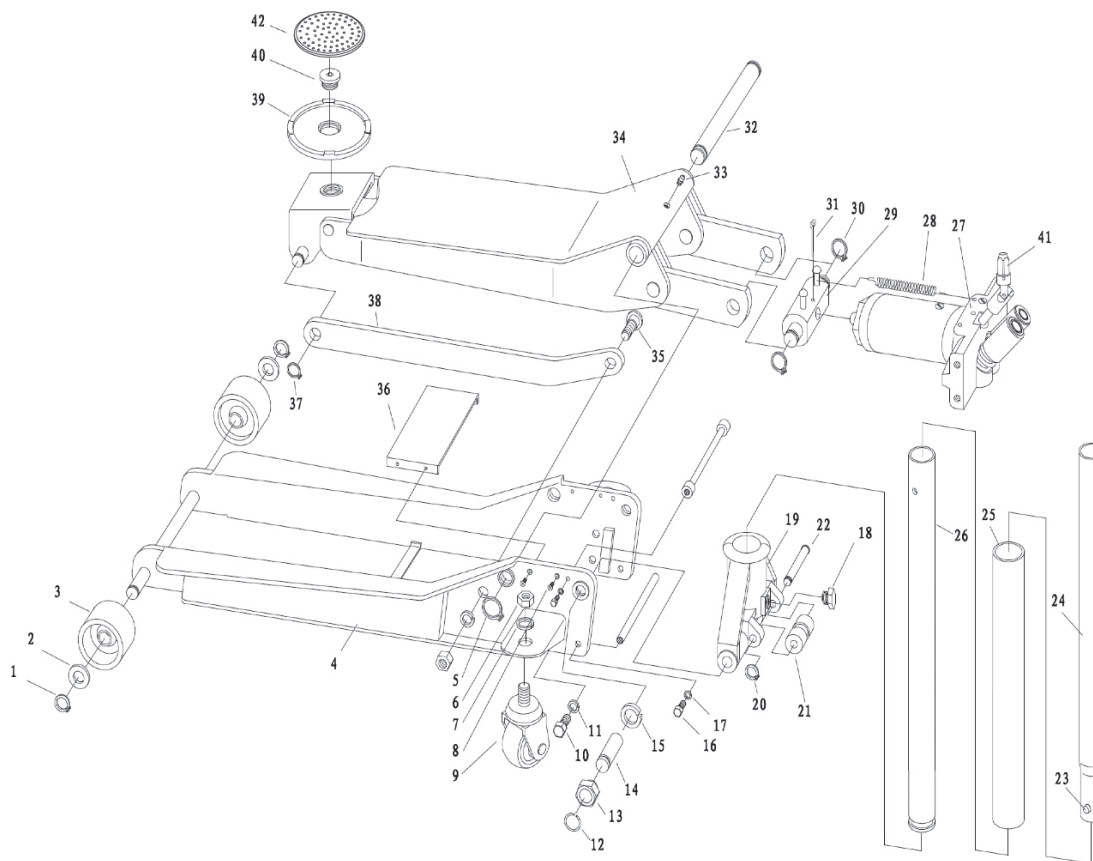
Service jacks are designed for lifting purposes only; always support raised load with jack stands.

REGULAR MAINTENANCE

- MONTHLY or as necessary (depending on usage)
- 1. Using a grease gun, add grease to grease fitting in the lift arm pivot shaft. (Use a multi-purpose NLGI type grease only.)
- 2. Lubricate all linkages and pivot points. (Use white lithium spray grease only.)
- 3. Remove handle; lubricate handle receptacle and handle end. (Use white lithium spray grease only.)
- 4. Lubricate both rear casters, bearing and both front wheels. (Use white lithium spray grease only.)
- 5. Tighten all accessible hardware.



PARTS DIAGRAM



| Item No. | Part No. | Description | Qty. | Item No. | Part No. | Description | Qty. |
|----------|------------|---|------|----------|---------------|------------------------------------|------|
| 1 | RS35T01 | Retaining Ring (20) | 2 | 23 | RS6602LP23 | Spring and Button | 1 |
| 2 | RS35T02 | Washer (20) | 2 | 24 | RS6602LP24 | Handle Lever A | 1 |
| 3 | RS6602LP03 | Front Wheel (2-3/8") | 2 | 25 | RS20025 | Handle Bumper | 1 |
| 4 | | Frame | 1 | 26 | RS6602LP26 | Handle Lever B | 1 |
| 5 | | Retaining Ring (25) | 2 | 27 | RS20027 | Complete Hydraulic Unit | 1 |
| 6 | RS6602LP06 | Nut (M16) | 4 | 28 | RS6602LP28 | Spring | 2 |
| 7 | | Washer (16) | 4 | 29 | RS6602LP29 | Hydraulic Unit Adapter (incl. #30) | 1 |
| 8 | | Screw (M5 x 12) | 4 | 30 | | Retaining Ring (22) | 1 |
| 9 | RS20009 | Swivel Rear Caster w/ Hardware (incl. #7 & 8) | 2 | 31 | | Pin (A4X55) | 1 |
| 10 | | Screw (M10 x 25) | 4 | 32 | | Lift Arm Shaft | 1 |
| 11 | | Washer (10) | 4 | 33 | RS6602LP33 | Zerk | 1 |
| 12 | | Retaining Ring (15) | 2 | 34 | | Lift Arm | 1 |
| 13 | | Nut | 2 | 35 | | Bolt | 1 |
| 14 | RS6602LP14 | Shaft Assembly (incl. #12, 13 & 15) | 2 | 36 | | Cover Plate | 1 |
| 15 | | Washer (20) | 2 | 37 | RS6602LP37 | Retaining Ring (14) | 2 |
| 16 | | Nut | 4 | 38 | | Radius Linkage | 2 |
| 17 | | Washer (8) | 5 | 39 | RS20039 | Saddle | 1 |
| 18 | RS35B11 | Set Screw Handle | 1 | 40 | RS6602LP40 | Saddle Screw | 1 |
| 19 | RS20019 | Handle Socket | 1 | 41 | RS6602LP41 | Universal Rotating Device | 1 |
| 20 | | Retaining Ring (12) | 1 | 42 | RS20042 | Saddle Pad | 1 |
| 21 | | Roller | 1 | | RSJSA200ELPLK | Product Label Kit (not shown) | 1 |
| 22 | | Roller Shaft | 1 | | | | |

Only items identified by part number are available for purchase.



JSA200EL **2-TON CAPACITY** **EXTRA LOW JACK**

LIMITED WARRANTY

MAC TOOLS WARRANTS TO ITS CUSTOMERS THAT THE COMPANY'S MAC TOOLS BRANDED PRODUCTS ARE FREE FROM DEFECTS IN WORKMANSHIP AND MATERIALS.

Mac Tools will repair or replace its Mac Tools branded products which fail to give satisfactory service due to defective workmanship or materials, based upon the terms and conditions of the following described warranty plans attributed to that specific product. This product carries a ONE-YEAR warranty. During this warranty period, Mac Tools will repair or replace at our option any part or unit which proves to be defective in material or workmanship.

Other important warranty information:

This warranty does not cover damage to equipment or tools arising from alteration, abuse, misuse, damage and does not cover any repairs or replacement made by anyone other than Mac Tools. The foregoing obligation is Mac Tools sole liability under this or any implied warranty and under no circumstances shall we be liable for any incidental or consequential damages.

Note: Some states do not allow the exclusion or limitation of incidental or consequential damages, so the above limitation or exclusion may not apply to you. If you have any questions about warranty service, please contact Mac Tools. This warranty gives you specific legal rights and you may also have other rights which vary from state to state.