

### PARTS BREAKDOWN/OPERATING MANUAL

#### SPECIFICATIONS

Pump Ratio (max):	40:1
Output per Stroke:	.288 ml/min
Pneumatic Inlet Pressure (min):	40 psig
Pneumatic Inlet Pressure (max):	100 psig
Grease Output Pressure:	3,800 psig
Grease Reservoir Capacity:	.14 oz
Operating Temperature Range:	14°-104°
Weight (empty):	3.5 lbs
Lubricant up to NLGI:	#2 Grease
Pneumatic Port Inlet:	1/4" NPT
Grease Port Outlet:	1/8" NPT

## ! WARNING


#### FOR YOUR SAFETY AND TO PREVENT INJURY:

 READ THIS INSTRUCTION MANUAL CAREFULLY AND UNDERSTAND ALL INFORMATION BEFORE OPERATING THIS TOOL.

 ALWAYS WEAR SAFETY EYE & EAR PROTECTION (USERS & BYSTANDERS).

DO NOT EXCEED 40 psig WITH HOSE OR 100 psig WITH SOLID EXTENSION. TO DO SO MAY CAUSE PERSONAL INJURY.

EXTREME PRESSURE MAY CAUSE WHIP HOSE TO BURST. USE ONLY APPROVED HOSES AND FOLLOW THE HOSE INSTRUCTIONS AND WARNINGS.

 THIS AIR OPERATED GREASE GUN CAN DEVELOP HIGH PRESSURES - UP TO 3,800 psig. USE SAFETY GLASSES AND GLOVES WHILE OPERATING THE GUN. KEEP HANDS CLEAR OF THE EXPOSED RUBBER PORTION OF THE HOSE WHILE OPERATING THE GUN WITH HOSE.

IF FLUID APPEARS TO PENETRATE THE SKIN, SEEK IMMEDIATE MEDICAL ATTENTION.  
DO NOT TREAT AS A SIMPLE CUT.

BE SURE THE TRIGGER IS NOT DEPRESSED WHEN ATTACHING THE GUN TO AN AIR INLET HOSE.

AVOID ACCIDENTAL STARTING.

HOLD THE HOSE ONLY BY THE METAL SPRING GUARDS ON THE END.


DO NOT ALLOW THE HOSE TO KINK. DO NOT BEND THE HOSE IN A TIGHT RADIUS.

REPLACE THE HOSE AT FIRST SIGN OF WEAR, KINK OR DAMAGE TO THE OUTSIDE JACKET.

USE ONLY HIGH PRESSURE GREASE GUN HOSE AS A REPLACEMENT.

THIS PRODUCT CONTAINS CHEMICALS KNOWN TO THE STATE OF CALIFORNIA TO CAUSE CANCER AND BIRTH DEFECTS OR OTHER REPRODUCTIVE HARM. WASH HANDS THOROUGHLY AFTER HANDLING.

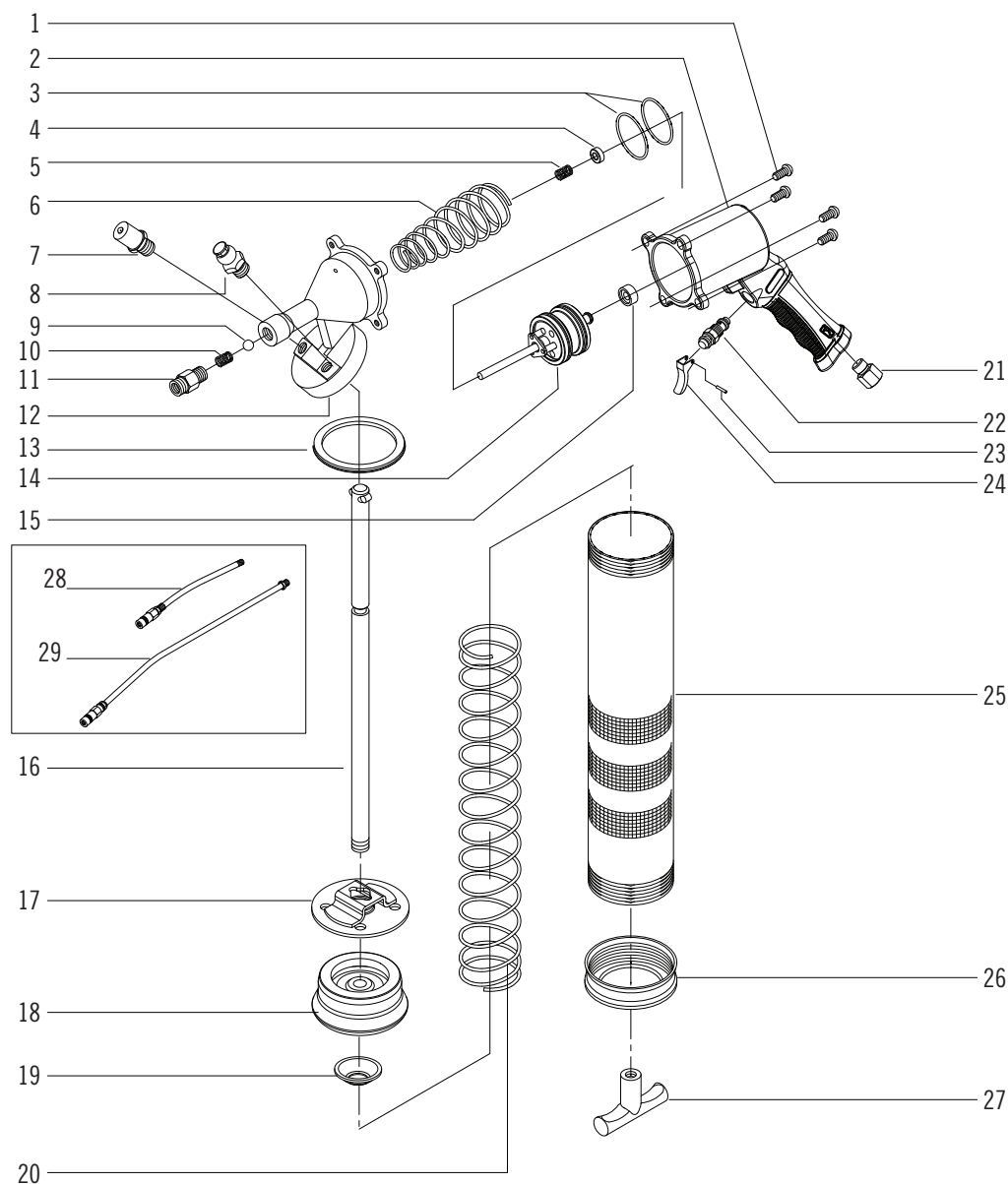
FAILURE TO HEED THESE WARNINGS MAY RESULT IN SERIOUS OR FATAL PERSONAL INJURY, PROPERTY DAMAGE OR BOTH.

 **WARNING:** This product can expose you to chemicals including nickel, which is known to the State of California to cause cancer and birth defects or other reproductive harm. For more information go to [www.P65Warnings.ca.gov](http://www.P65Warnings.ca.gov).



Continuous Shot Air Grease Gun is a fully pneumatic powered tool. The gun is designed for lubrication of grease points in automotive and truck applications. The gun has a single action pump that delivers grease each time the trigger is depressed and the plunger moves forward.

**PARTS BREAKDOWN**  
**Model GG63HD Continuous Shot Air Grease Gun**



Ref. #	Item #	DESCRIPTION	QTY	Ref #	Item#	DESCRIPTION	QTY
1	RS901104	Screw	4	16	RSCSGGA16	Piston Rod	1
2	RSGG63HD02	Finger Grip	1	17	RSCSGGA17	Plunger Lock	1
3	RSCSGGA03	O-Ring	2	18	RSCSGGA18	Plunger	1
4	RSCSGGA04	Bumper	1	19	RSCSGGA19	Washer	1
5	RSCSGGA05	Spring	1	20	RSCSGGA20	Long Spring	1
6	RSCSGGA06	Spring	1	21	RSCSGGA21	Air Inlet	1
7	RS901111	Filler Plug	1	22	RS901612	Switch	1
8	RS901607	Air Vent Valve	1	23	RSCSGGA23	Pin	1
9	RSCSGGA09	Ball	1	24	RSCSGGA24	Trigger	1
10	RSCSGGA10	Spring	1	25	RSGG63HD25	Container Tube	1
11	RS901108	Adapter	1	26	RSCSGGA26	End Cap	1
12	RSCSGGA12	Housing Cap	1	27	RSCSGGA27	Handle	1
13	RSCSGGA13	Gasket	1	28	RS901608	6" Hex Spout	1
14	RSCSGGA14	Piston Set	1	29	RSCSGGA29	18" Nylon Hose	1
15	RSCSGGA15	Rubber Valve	1				

# Model GG63HD Continuous Shot Air Grease Gun

## FEATURES AND FUNCTIONS

- Continuous grease feed with one trigger pull
- Heavy duty cast aluminum body for durability and long life
- 3 way loading - bulk, 14 oz. cartridge, filler pump
- Locking plunger for force priming the gun
- Bleeder valve for purging unwanted air
- Working pressure: 40 psig - 100 psig
- Includes 18" high press grease hose, and 6" bent metal spout

## PROPER GREASE GUN USE

This Air Powered Continuous Shot Air Grease Gun was developed for the specific purpose of dispensing grease by using pneumatic power.

The maximum rating listed in the specifications, should not be exceeded.

This tool should only be used for its designed purpose and according to the instructions in this manual.

## GENERAL CAUTIONARY NOTES

Do not allow bystanders, children or other on-lookers in the work area as they can cause distractions, which may lead to mistakes and accidents.

Carefully inspect the equipment for damaged, loose or missing parts. If the unit is worn or damaged, do not use it and contact an authorized service center for evaluation or repair.

The Continuous Shot Air Grease Gun must be primed after each refill or grease cartridge change. You should also check the priming of the gun before each use.

For best performance and to extend product life, add a few drops of air tool oil through the air fitting at the bottom of the handle if gun begins to cycle slowly or erratically.

## CAUTION!

Air pockets in the cartridge will cause the gun to lose prime.

## PRIMING THE CONTINUOUS SHOT AIR GREASE GUN

With the gun loaded with grease and the gun hooked to an air supply, activate the trigger until grease flows from the hose or pipe. To relieve air pockets, operate the air vent valve #8 while depressing the trigger. If grease does not flow after 10-15 seconds of operation, remove the hose or pipe and activate the trigger until grease flows from the hose/pipe outlet. Make sure the bearing, fitting and lubrication line are clear and free flowing before operating the gun. If the bearing, fitting or lubrication line is blocked, the gun can stall.

## REMOVING AN EMPTY GREASE CARTRIDGE

**Make sure that the Grease Gun is disconnected from the air supply prior to adding or removing the Grease Cartridge.**

1. Pull the T-handle until the rod is fully extended. Hook the rod into the rod notch in the end cap.
2. Unscrew the grease tube from the gun.
3. Carefully center the grease rod and eject the empty cartridge from the grease barrel.

## INSTRUCTIONS FOR CARTRIDGE LOADING

**Make sure that the Grease Gun is disconnected from the air supply prior to adding or removing the Grease Cartridge.**

1. Pull the T-handle until the rod is fully extended, lock the rod into the cap notch and remove the barrel assembly from the gun.
2. Turn T handle 1/2 turn to lock the follower rod to the follower.
3. Remove the plastic cap from the grease cartridge and insert the cartridge into the barrel assembly.
4. Remove the pull-tab from the grease cartridge.
5. Screw the barrel assembly on to the gun assembly.
6. Release the rod by centering the rod.
7. Push the rod by hand until the follower is inserted into the grease cartridge. Then turn the T-handle 1/2 turn to unlock the follower rod from the follower.
8. Prime the gun and remove any air pockets per the instructions on priming the gun.

## SUCTION FILLING

1. Remove the barrel assembly from the gun.
2. Insert the open end of the barrel assembly into the grease bucket.
3. Pull the T-handle until it is fully to the rear and engage it in the rod notch, making sure to keep the open end of the barrel well within the grease.
4. When the barrel assembly is full of grease, screw it back on to the gun assembly.
5. Release the rod by centering the rod.
6. Prime the gun and remove any air pockets per the instructions on priming the gun.

## USING A FILLER PUMP

1. Attach the bulk load fitting to the bulk container.
2. Operate the filler pump.
3. When the T-handle and rod are fully extended (about 8-1/2"), the barrel is full.
4. Remove the gun from the bulk load container.
5. Release the rod by centering the rod.
6. Prime the gun and remove any air pockets per the instructions on priming the gun.