

PARTS BREAKDOWN/OPERATING MANUAL

SPECIFICATIONS

Pump Ratio (max):	40:1
Output per Stroke:	2 ml
Pneumatic Inlet Pressure (min):	40 psig
Pneumatic Inlet Pressure (max):	100 psig
Grease Output Pressure:	3,600 psig
Grease Reservoir Capacity:	14 oz
Operating Temperature Range:	14°-104°
Weight (empty):	2.2 lbs
Lubricant up to NLGI:	#2 Grease
Pneumatic Port Inlet:	1/4" NPT
Grease Port Outlet:	1/8" NPT

! WARNING


FOR YOUR SAFETY AND TO PREVENT INJURY:

 READ THIS INSTRUCTION MANUAL CAREFULLY AND UNDERSTAND ALL INFORMATION BEFORE OPERATING THIS TOOL.

 ALWAYS WEAR SAFETY EYE & EAR PROTECTION (USERS & BYSTANDERS).

DO NOT EXCEED 40 psig WITH HOSE OR 100 psig WITH SOLID EXTENSION. TO DO SO MAY CAUSE PERSONAL INJURY.

EXTREME PRESSURE MAY CAUSE WHIP HOSE TO BURST. USE ONLY APPROVED HOSES AND FOLLOW THE HOSE INSTRUCTIONS AND WARNINGS.

 THIS AIR OPERATED GREASE GUN CAN DEVELOP HIGH PRESSURES - UP TO 3,600 psig. USE SAFETY GLASSES AND GLOVES WHILE OPERATING THE GUN. KEEP HANDS CLEAR OF THE EXPOSED RUBBER PORTION OF THE HOSE WHILE OPERATING THE GUN WITH HOSE.

IF FLUID APPEARS TO PENETRATE THE SKIN, SEEK IMMEDIATE MEDICAL ATTENTION. DO NOT TREAT AS A SIMPLE CUT.

BE SURE THE TRIGGER IS NOT DEPRESSED WHEN ATTACHING THE GUN TO AN AIR INLET HOSE.

AVOID ACCIDENTAL STARTING.

HOLD THE HOSE ONLY BY THE METAL SPRING GUARDS ON THE END.


DO NOT ALLOW THE HOSE TO KINK. DO NOT BEND THE HOSE IN A TIGHT RADIUS.

REPLACE THE HOSE AT FIRST SIGN OF WEAR, KINK OR DAMAGE TO THE OUTSIDE JACKET.

USE ONLY HIGH PRESSURE GREASE GUN HOSE AS A REPLACEMENT.

THIS PRODUCT MAY CONTAIN CHEMICALS KNOWN TO THE STATE OF CALIFORNIA TO CAUSE CANCER AND BIRTH DEFECTS OR OTHER REPRODUCTIVE HARM. WASH HANDS THOROUGHLY AFTER HANDLING.

FAILURE TO HEED THESE WARNINGS MAY RESULT IN SERIOUS OR FATAL PERSONAL INJURY, PROPERTY DAMAGE OR BOTH.

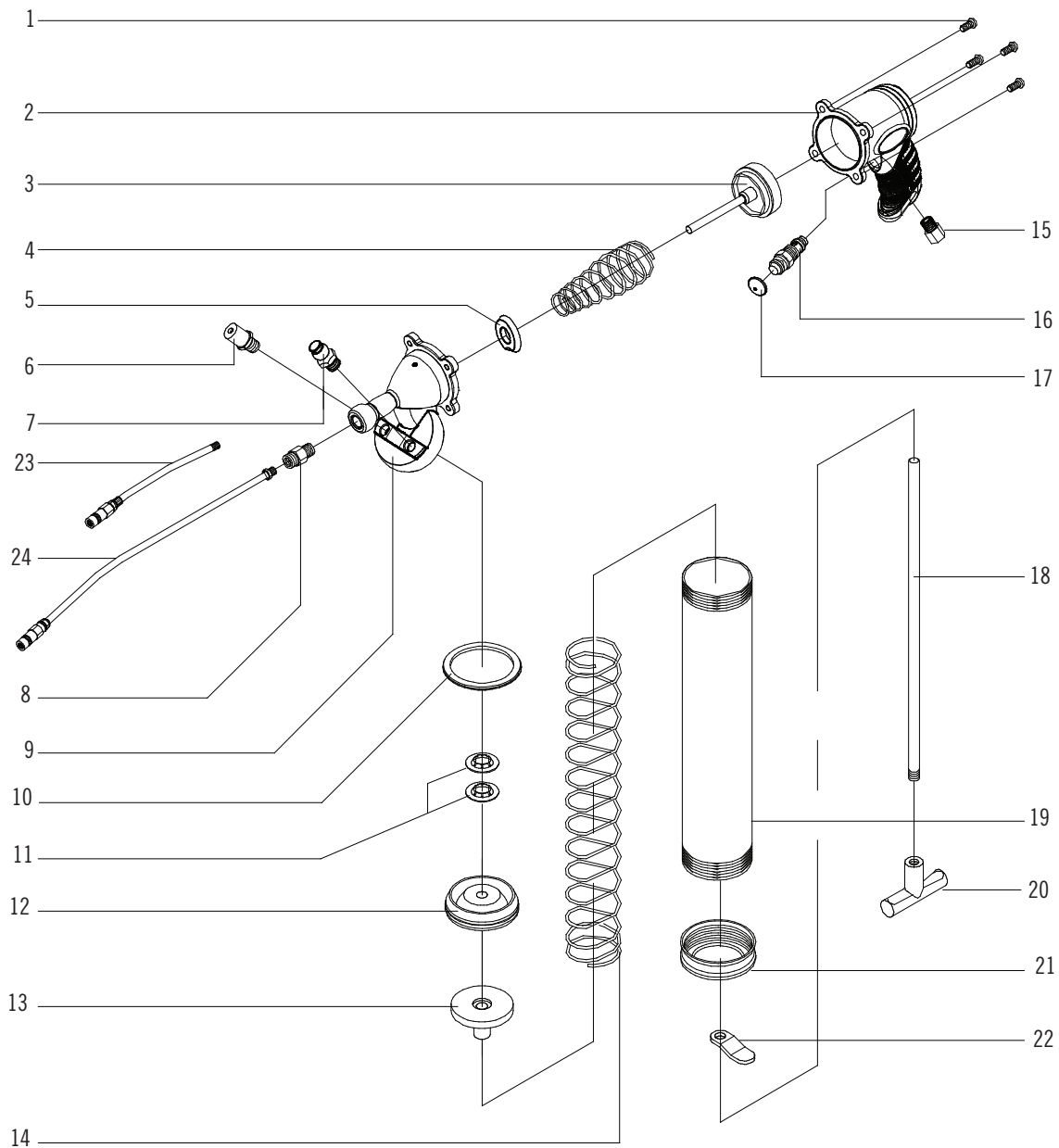
 **WARNING:** This product can expose you to chemicals including nickel, which is known to the State of California to cause cancer and birth defects or other reproductive harm. For more information go to www.P65Warnings.ca.gov.



The pistol-style, Heavy-Duty Single Shot Air Grease Gun is a specially designed, high quality, professional air tool for automotive, truck and industrial applications.

PARTS BREAKDOWN

Model GGG53HD Heavy-Duty Single Shot Air Grease Gun



Ref. #	Item #	DESCRIPTION	QTY	Ref #	Item#	DESCRIPTION	QTY
1	RS901601	Screw	4	13	RS901116	Backlash Gasket	1
2	RSGG53HD02	Finger Grip	1	14	RS901117	Long Spring	1
3	RS901105	Piston	1	15	RS901611	Air Inlet	1
4	RS901106	Spring	1	16	RS901612	Switch	1
5	RS901605	Gasket	1	17	RS901613	Trigger	1
6	RS901111	Filler Plug	1	18	RS901619	Piston Rod	1
7	RS901607	Air Vent Valve	1	19	RSGG53HD19	Container Tube	1
8	RS901108	Adapter	1	20	RSGG53HD20	Handle	1
9	RS901124	Housing Cap	1	21	RSSSAGG21	End Cap	1
10	RS901614	Gasket	1	22	RS901121	Locking Plate	1
11	RS901615	Nut	2	23	RS901608	6" Hex Spout	1
12	RS901115	Plunger	1	24	RSSSAGG24	12" Nylon Hose	1

Model GG53HD Heavy-Duty Single Shot Air Grease Gun

FEATURES AND FUNCTIONS

- Heavy duty composite body for lighter weight and easier use
- 3 way loading - bulk, 14 oz. cartridge, filler pump
- Bleeder valve for purging unwanted air
- Weighs only 2.2 lbs
- Includes 6" bent metal spout and 12" high pressure grease hose

PROPER GREASE GUN USE

This Air Powered Heavy-Duty Single Shot Air Grease Gun was developed for the specific purpose of dispensing grease by using pneumatic power.

The maximum rating listed in the specifications, should not be exceeded.

This tool should only be used for its designed purpose and according to the instructions in this manual.

GENERAL CAUTIONARY NOTES

Do not allow bystanders, children or other on-lookers in the work area as they can cause distractions, which may lead to mistakes and accidents.

Carefully inspect the equipment for damaged, loose or missing parts. If the unit is worn or damaged, do not use it and contact an authorized service center for evaluation or repair.

The Heavy-Duty Single Shot Air Grease Gun must be primed after each refill or grease cartridge change. You should also check the priming of the gun before each use.

For best performance and to extend product life, add a few drops of air tool oil through the air fitting at the bottom of the handle if gun begins to cycle slowly or erratically.

CAUTION!

Air pockets in the cartridge will cause the gun to lose prime.

REMOVING AN EMPTY GREASE CARTRIDGE

Make sure that the Grease Gun is disconnected from the air supply prior to adding or removing the Grease Cartridge.

1. Pull the T-handle until the rod is fully extended. Hook the rod into the rod notch in the end cap.
2. Unscrew the grease tube from the gun.
3. Carefully center the grease rod and eject the empty cartridge from the grease barrel.

INSTRUCTIONS FOR CARTRIDGE LOADING

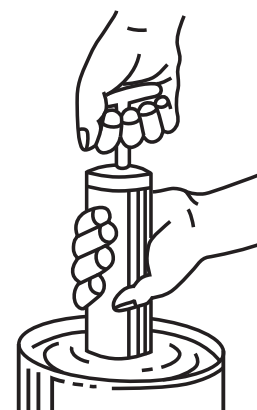
Make sure that the Grease Gun is disconnected from the air supply prior to adding or removing the Grease Cartridge.

1. Remove the gun head from the container tube.
2. Completely draw back the plunger handle.
3. Insert open end of cartridge into container tube and push all the way in. Remove the seal or pull tab end from the cartridge.
4. Reassemble the gun head to the container tube. Press the catch plate and release the piston rod. Pull down the plunger handle.



SUCTION FILLING

1. Remove the gun head from the container tube.
2. Submerge open end of the container tube into grease bucket about 2" deep and pull the plunger handle out slowly and engage rod into key slot.
3. Reassemble the gun head to the container tube. Press the catch plate and release the piston rod. Pull down the plunger handle.



TROUBLESHOOTING/PRIMING

If your guns fails to work, first check for air pockets in the gun.

To remove trapped air, unscrew the gun head 1 to 1-1/2 turns and do as follows:

1. Draw back plunger rod fully and release quickly. Repeat several times.
2. Push plunger rod all the way in.
3. Tighten the head to the barrel.
4. Press air vent valve several times to expel the air.

