



CRS1700 Creeper Seat

⚠ WARNING

FAILURE TO OBSERVE THESE WARNINGS COULD RESULT IN INJURY.



- Read and follow all instructions in User's Manual.
- Do not load seat beyond rated capacity:
Maximum Seat Capacity 300 Lbs.
Each Drawer 22 Lbs. each

PLEASE NOTE: Loading seat beyond rated capacity may cause structural damage to the seat as well as personal and/or property damage. Please educate your customers to the "dangers of overloading".

It is the responsibility of the owner to make sure all personnel read this manual prior to using the device. It is also the responsibility of the device owner to keep this manual intact and in a convenient location for all to see and read. If the manual or product labels are lost or not legible, contact Mac Tools for replacements. If the operator is not fluent in English, the product and safety instructions shall be read and discussed with the operator in the operator's native language by the purchaser/owner or his designee, making sure that the operator comprehends its contents.

Do not exceed weight capacity of 300 lbs.

Lock drawers before moving.

Inspect before every use. Do not use if parts are loose or damaged.

Wear gloves when lifting edges.

Keep children away from unit.

Stool can tilt or tip over causing damage or personal injury.

Do not stand on or step on stool.

Do not stand on or step on tool tray.

Do not stand on or step in drawers.

Do not open more than one loaded drawer at a time.

Units can tip or fall causing damage or personal injury.

Stool is designed to roll easily on flat surfaces and should not be used on uneven or inclined surfaces.

Do not use (or modify) this stool for any other purpose than that for which it was designed.

Do not remove any labels. Replace any damaged labels.

Failure to heed these warnings may result in serious or fatal personal injury and/or property damage.



WARNING: This product can expose you to chemicals including nickel, which is known to the State of California to cause cancer and birth defects or other reproductive harm. For more information go to www.P65Warnings.ca.gov.



CRS1700 Creeper Seat



Tools Needed for Assembly:

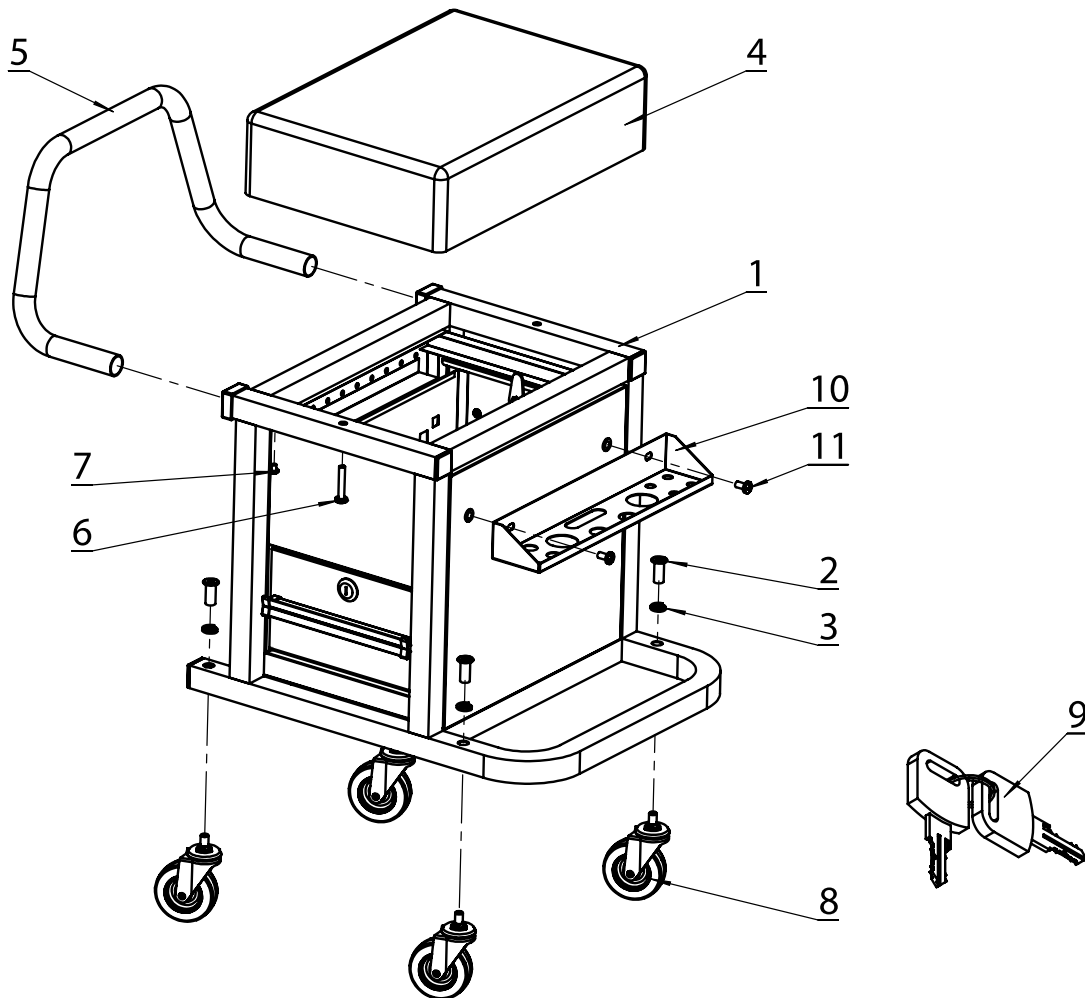
Hex Key (included)

Phillips® Screwdriver

Assembly Instructions:

1. Attach all (4) casters (#8) to the bottom of the creeper seat frame (#1). Insert the threaded stem of each caster (#8) through the hole, add washers (#3) and tighten nut (#2) onto stem with hex key provided.
2. Place seat cushion on top of the seat frame (#1), use (2) screws (#6) to screw the seat into place using a Phillips® screwdriver.
3. Insert the handle (#5) into the two slots in the back of the seat frame (#1). Using a Phillips® screwdriver screw (2) (#7) screws into the seat frame.
4. Attach the screwdriver holder (#10) using (2) screws (#11) using a Phillips® screwdriver.

PARTS LIST AND DRAWING



Ref No.	Part No.	Description	Qty
1		Seat Frame	1
2		Nut	4
3		Spring Washer	4
4	RS170004	Seat pad	1
5		Handle	1
6		Screw	2
7		Screw	2
8	RS170008	Caster 2.5" (each)	4
9	RS170009	Lock w/Keys	1
10	RS170010	Screwdriver Holder	1
11		Screw	2
not shown	RSCRS1700PLK	Product Label Kit	1