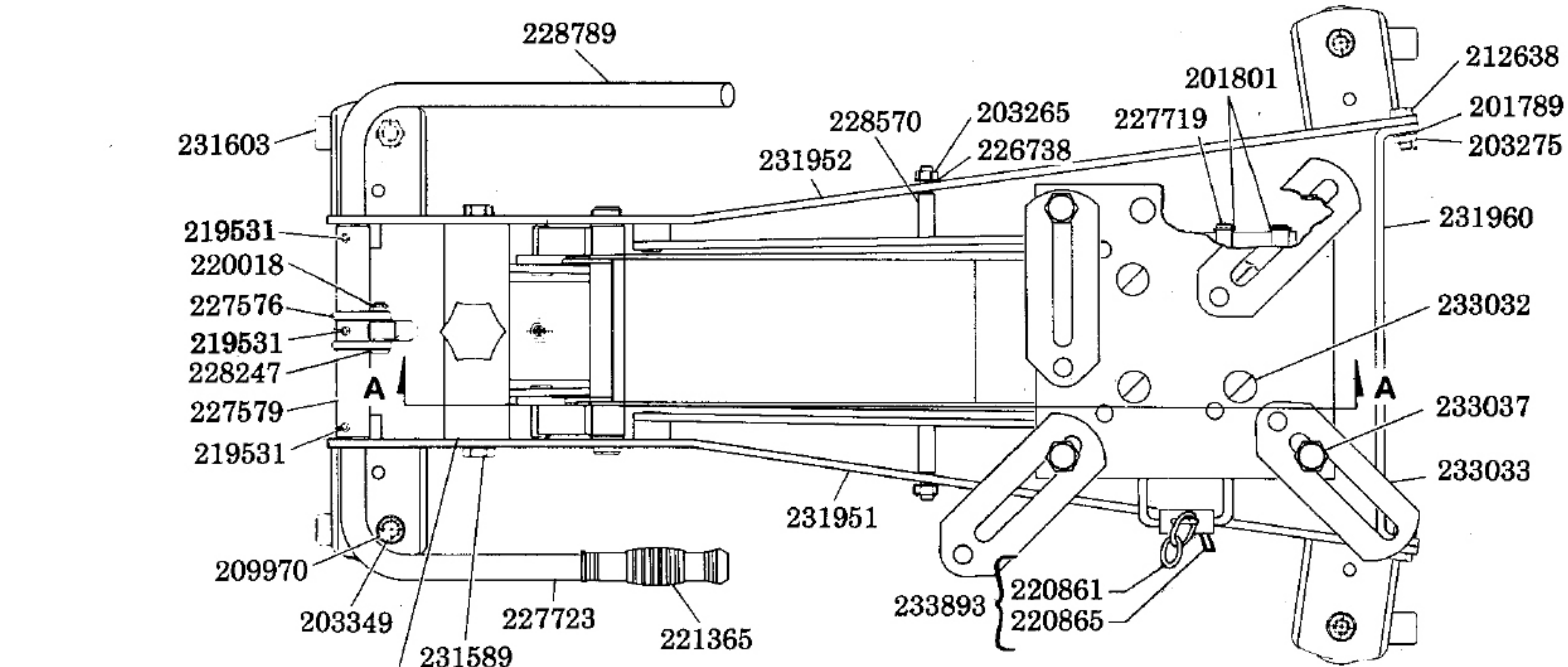


HYDRAULIC TRANSMISSION JACK

1/2 TON CAPACITY

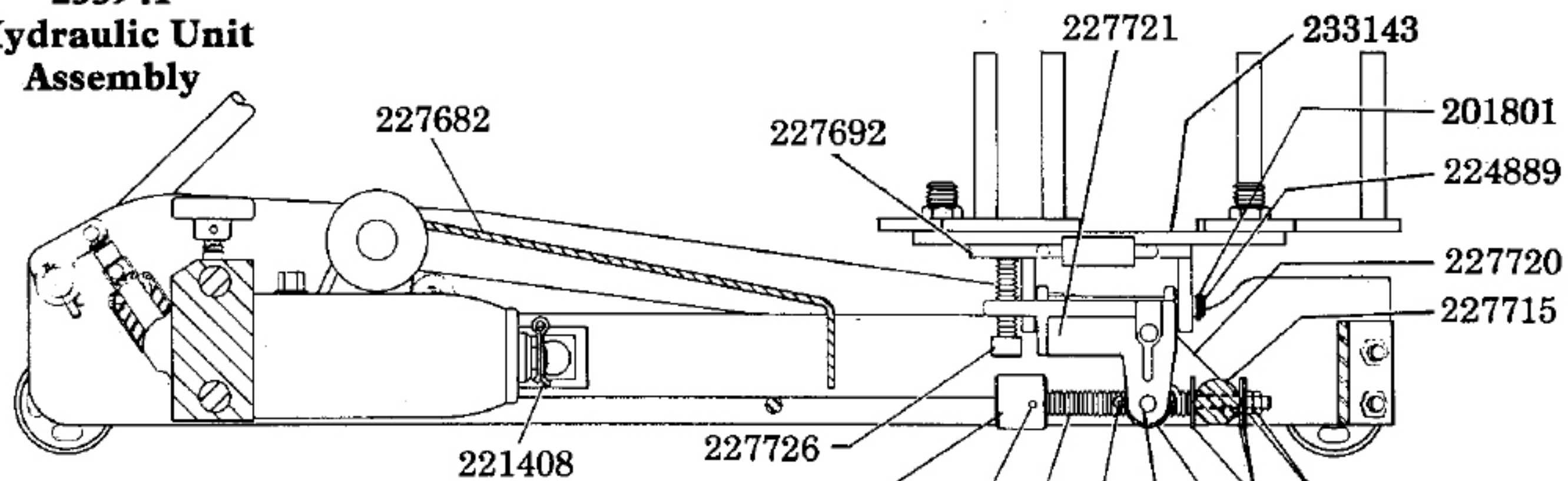
Model 91-716, 93716, YA-876

Series "E"



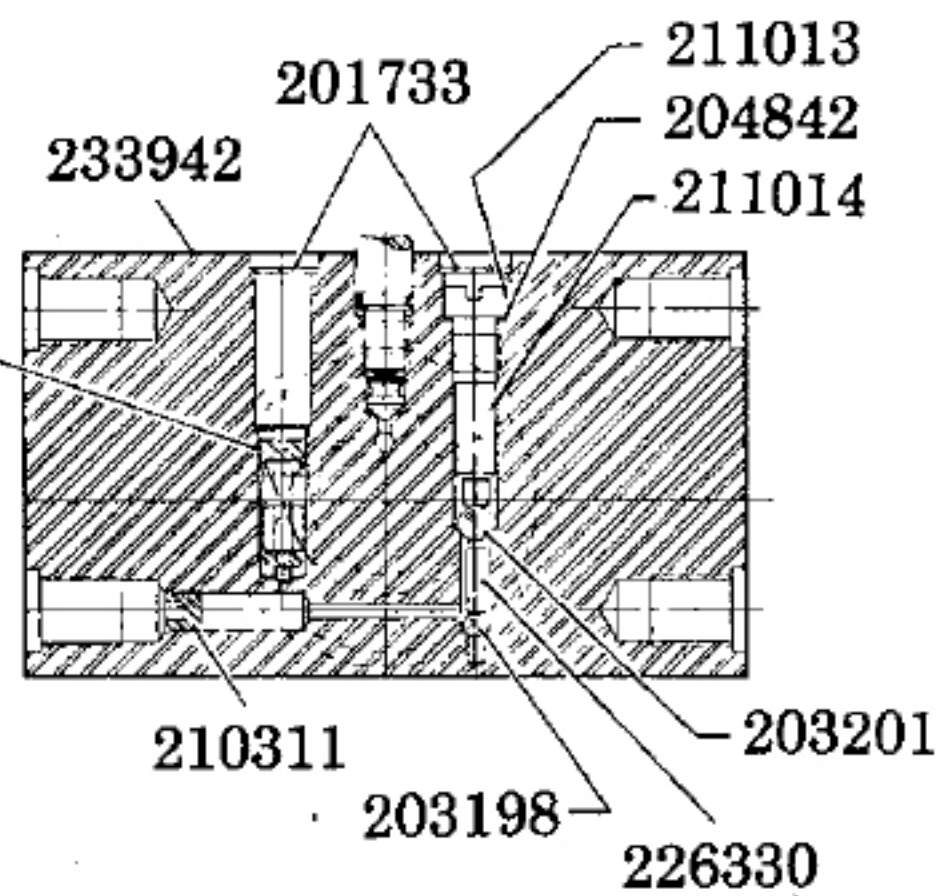
233941 Hydraulic Unit Assembly

SECTION A-A

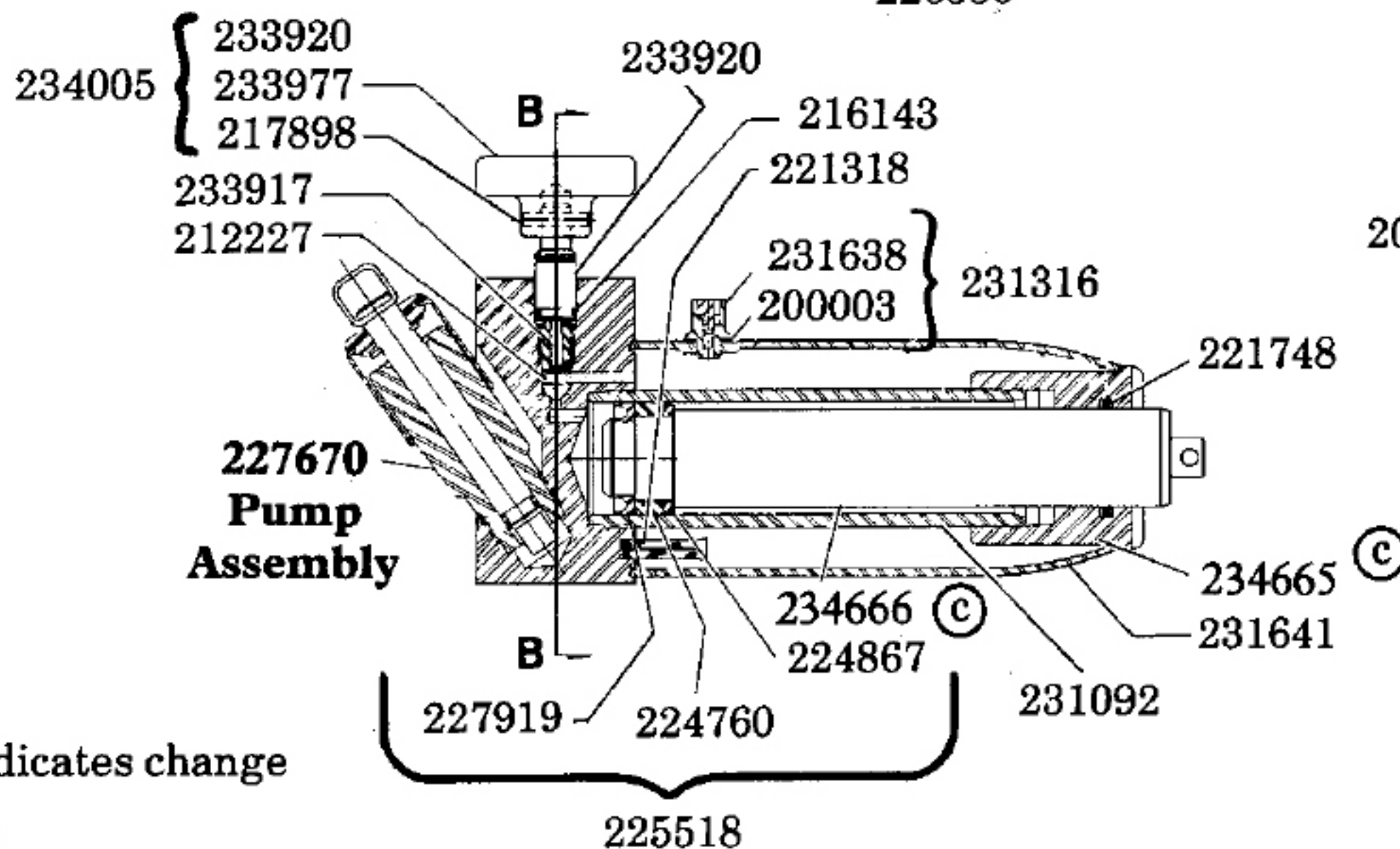


SECTION B-B

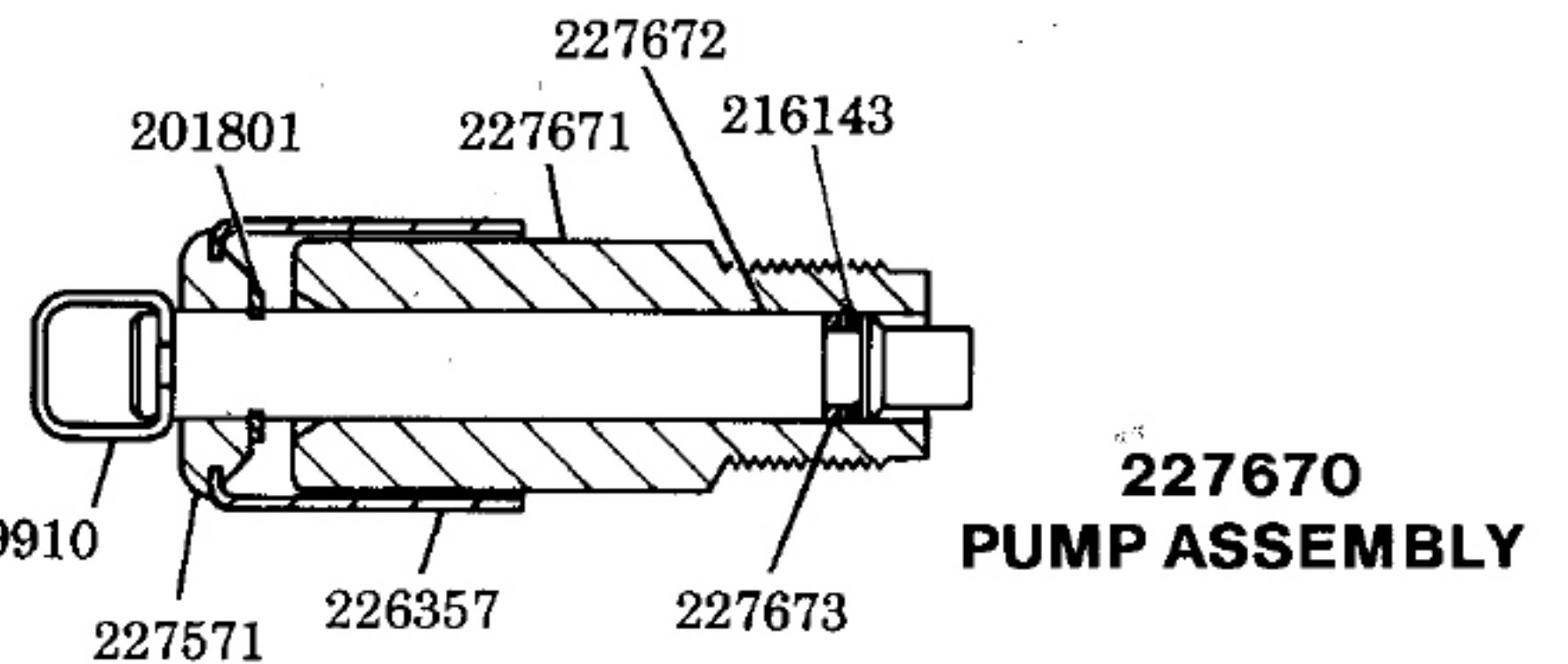
Safety valve is factory pre-set. If adjustment or repair is required, return jack to nearest service depot.



233941 HYDRAULIC UNIT ASSEMBLY



227670 Pump Assembly



227670 PUMP ASSEMBLY

MODEL	LABEL KIT NO.	REPAIR KIT NO.
91-716	240073	91-320
93716	240074	240521
YA-876	240076	240521

© Indicates change

LINCOLN ST. LOUIS
4010 GOODFELLOW BLVD. • ST. LOUIS, MO. 63120 • (314) 679-4200



SECTION - **W3**
PAGE - **3E**

TROUBLESHOOTING

PROBLEM	SOLUTION
1) Oil leaking thru filler plug.	The reservoir could be overfilled — The filler plug is designed with an automatic ventilator valve which allows excess air or oil to escape from the hydraulic system.
1) Jack will not lift load. 2) Jack will not lift full height. 3) Jack pump feels "spongy" under load.	The jack could be low on oil — Remove the filler plug and fill reservoir with clean HYDRAULIC JACK OIL. The jack could be air bound — To purge the air from the oil lines, open the release and pump rapidly a few strokes. Close release and pump to full height, then open the release to allow the jack to descend rapidly.
1) Jack handle raises under load. 2) Jack handle lowers under load. 3) Jack will not lift load. 4) Jack will not hold load.	The valves might not be closing — Lower the lifting arm and close the release valve. Place one foot on a front wheel and raise the lifting arm to it's full height by hand. Open the release valve to lower the lifting arm. The jack should now operate properly.

If the above procedures do not correct the problem, contact your nearest service depot. When submitting any jack or equipment to be repaired, be sure to state the nature of the problem and indicate whether an estimate of the repair cost is needed.

IMPORTANT: As with any hydraulic unit, this unit may occasionally become "air bound" due to being tipped over during shipment. To purge the air from the lines, open the release and pump rapidly a few strokes. Close release and pump to full height, then open the release to allow the ram to descend rapidly. If the pump still seems "spongy", repeat the procedure.

SPECIFICATIONS

Low Pickup Height	High Lifting Point	Lifting Head Size (Max.)	Chassis Length	Max. Chassis Width	Caster Wheel Dia.	Forward Tilt	Rearward Tilt	Sideways Tilt
9-1/2"	28-1/4"	15-1/2" Square	33"	20"	2-1/2"	60°	18°	12° R & L

SERVICE PARTS

PART	QUAN.	DESCRIPTION	PART	QUAN.	DESCRIPTION	PART	QUAN.	DESCRIPTION
200003	1	Gasket	221408	1	Cotter pin	*227919	1	U-cup packing
201733	2	Plug	*221748	1	Quad ring	228002	1	Cradle & tilt pad ass'y.
201789	4	Lockwasher	224760	1	Heel plate	228247	1	Pin
201801	7	Retaining ring	224867	1	Washer	228570	1	Pin
*203198	1	Ball	224889	1	Pin	228789	1	Handle - L.H.
*203201	1	Ball	225518	1	Ram assembly	231092	1	Cylinder
203265	2	Nut	226330	1	Spacer	231316	1	Plug & gasket ass'y.
203275	6	Nut	226357	1	Pump sleeve	231589	4	Bolt
203349	4	Nut	226738	2	Lockwasher	231603	4	Caster
204842	1	Gasket	227571	1	Grommet	231638	1	Filler plug & vent valve
209910	1	Pump clip	227576	1	Handle socket	231641	1	Oil tank
209970	4	Lockwasher	227579	1	Tube	231951	1	Side plate ass'y. - R.H.
210311	1	Plug	227670	1	Pump assembly	231952	1	Side plate ass'y. - L.H.
211013	1	Plug	227671	1	Cylinder	231960	1	Spacer
211014	1	Spacer	227672	1	Piston	233032	4	Screw
212227	1	Poppet	*227673	1	Washer	233033	4	Swing arm assembly
212638	4	Bolt	227682	1	Bell crank assembly	233037	4	Bolt
214599	2	Pin	227692	1	Tilt pad & block ass'y.	233143	1	Top plate assembly
*216143	2	O-ring	227715	1	Tilt pin	233893	1	Chain & terminal ass'y.
217782	1	Roll pin	227717	3	Washer	*233917	1	Spring
217898	1	Roll pin	227718	1	Tilt screw	233920	1	Release stem
218962	1	Knob	227719	1	Pin	233941	1	Hydraulic unit ass'y.
219531	3	Roll pin	227720	2	Link	233942	1	Unit block
220018	1	Retaining ring	227721	1	Cradle	233977	1	Hand knob
220861	1	Chain, eyebolt & hook	227723	1	Handle - R.H.	234005	1	Release stem ass'y.
220865	1	Wing nut	227724	1	Pivot nut	234665	1	Tank nut
*221318	1	Screen	227726	2	Tilt screw	234666	1	Ram
221365	2	Handle grip	227766	2	Cotter pin			

*Included in 240521 & 91-320 Repair Kit.