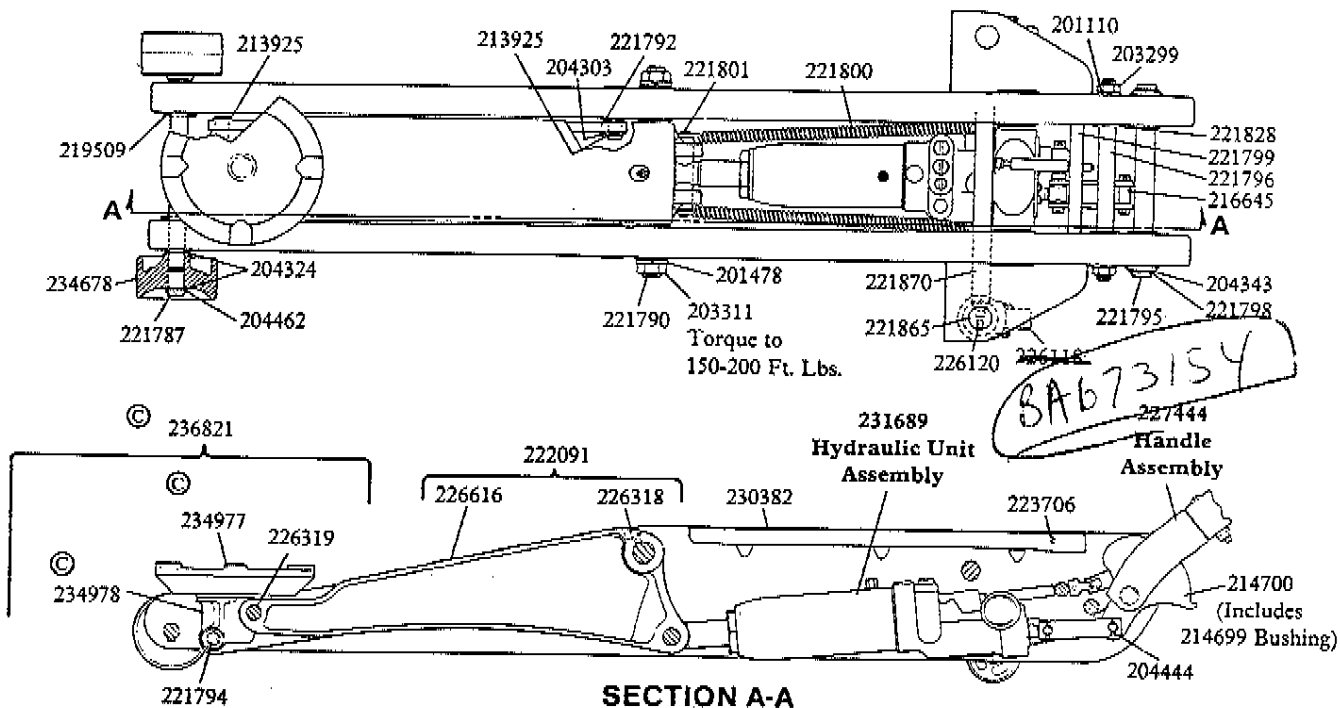


HYDRAULIC SERVICE JACK

2 TON CAPACITY

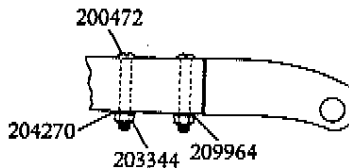
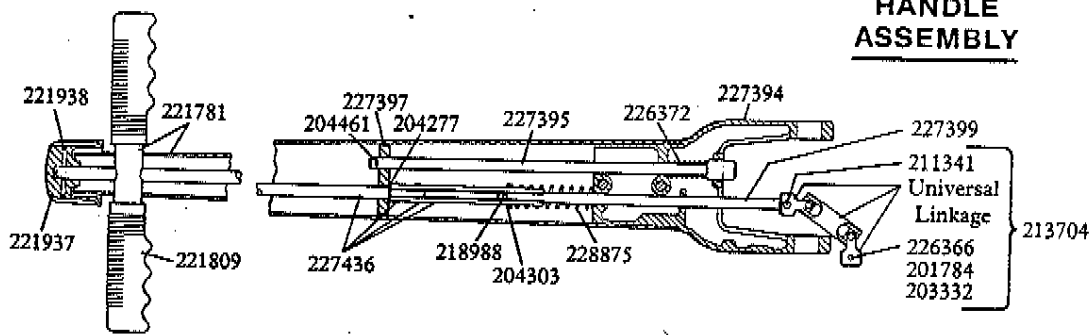
Models 91-655
93655

Series "M"



© Indicates Change

227893
227444
HANDLE
ASSEMBLY



MODEL	LABEL KIT NO.	REPAIR KIT NO.
91-655	240172	91-385
93655	240173	240365

236840

LINCOLN

One Lincoln Way St. Louis, Missouri 63120-1578
(314) 679-4200 Telex 44881

SECTION - **W1**
PAGE - **4E**

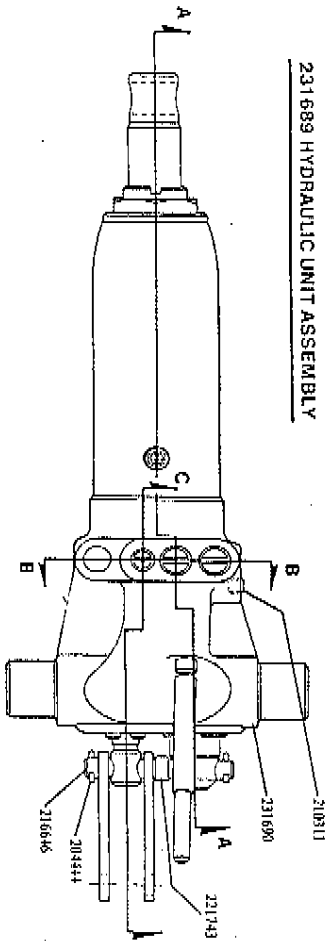
L-SEPT-86

Copyright 1986
Printed in U.S.A.

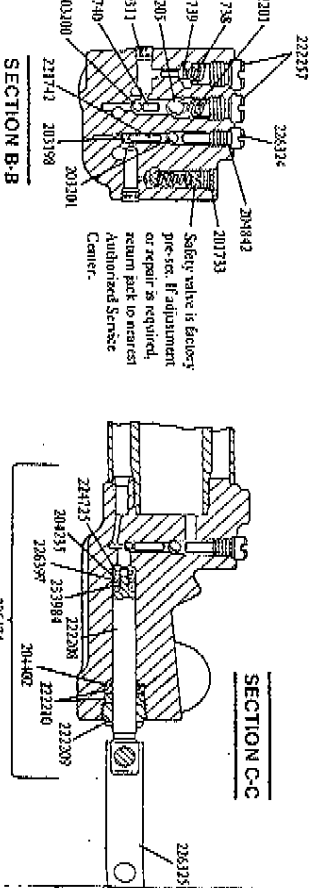
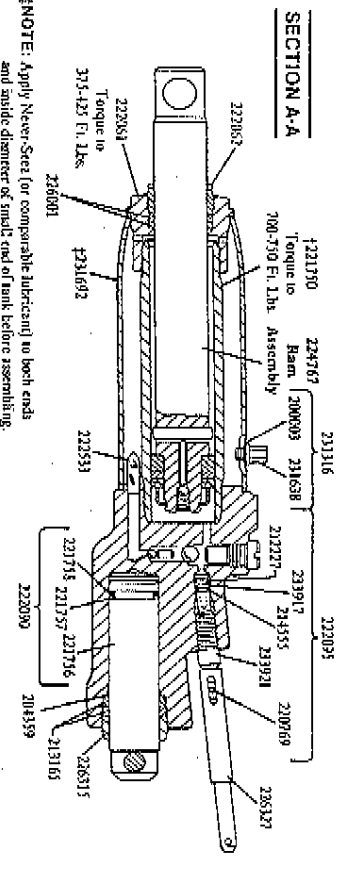
FORM 10347E

SERVICE PARTS

231689 HYDRAULIC UNIT ASSEMBLY

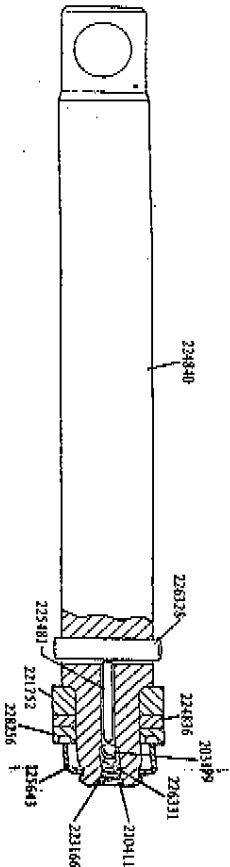


NOTE: Apply Never-Sez (or comparable lubricant) to threads before tightening.



NOTE: Apply Never-Sez (or comparable lubricant) to both ends and inside diameter of stud end of tank before assembling.

224767 RAM ASSEMBLY



PART	QUAN.	DESCRIPTION	PART	QUAN.	DESCRIPTION
200003	1	Gasket	218301	1	Pin
200172	2	Roll pin	211899	2	Handle grip
200130	2	Lockwasher	211838	2	Washer
201178	2	Lockwasher	211865	2	Caster sleeve
201733	2	Expansion plug	221870	1	Compression bar
202784	1	Lockwasher	221917	1	Release knob
*203196	1	Roll pin	211938	1	Roll pin
*201199	1	Roll pin	212061	1	Tank nut
*205380	1	Roll pin	222062	1	Gland nut
*203208	1	Roll pin	223090	1	Speed pump ass'y
*203205	1	Roll pin	223091	1	Roll pin
203209	2	Nut	223095	1	Release stem ass'y
203311	2	Nut	223201	1	Spring
205332	1	Nut	223208	1	Pressure pump
203344	2	Washer	*223210	2	Gland nut
202233	1	Washer	223209	1	Pressure pump
204270	2	Washer	223257	2	Pressure plug
204277	1	Washer	223253	2	Screen
204305	1	Washer	223165	1	Screen
204324	4	Washer	223205	2	Screw
204343	1	Washer	223215	1	Nut
204344	1	Washer	217067	1	Ham assembly
204402	1	Washer	*223836	1	Back-up washer
204441	4	Corner pin	223840	1	Ham
204461	1	Corner pin	223474	4	Pressure pump & packing pin
204462	2	Corner pin	227481	1	Pin
204464	2	Corner pin	226443	1	Tracking retainer
204482	1	Gasket	226415	2	Packing ring
206984	2	Lockwasher	*226004	2	Caster
210311	3	Eye plug	226218	2	Set screw
210811	1	Washer	226220	2	Clash nut
211541	1	Roller	226315	1	Grease fitting
212227	2	Release valve	226318	1	Pin
*213165	1	Universal linkage ass'y	226324	1	Pressure plug
213704	2	Retaining ring	226325	2	Pump link
213923	4	Retaining ring	226327	1	Sealed tube
*214935	1	O-ring	226328	1	Cross pin
214699	1	Bushing	226331	1	Spring
214700	1	Handic segment & bushing	226366	1	Block
216645	1	Pin	226372	1	Pilger spring
216646	1	Pump pin	*226397	1	Washer
218968	1	Roll pin	226616	1	Ball crank
219269	2	Roll pin	227194	1	Handle rodlet
220059	3	Cross pin	227395	1	Pilger ass'y
221738	1	Spring	227397	1	Link
221739	1	Pin	227599	1	Extension rod
221740	1	Ball stop plug	227746	1	Tuning rod ass'y
221742	1	Ball stop plug	227844	1	Handle ass'y
221743	1	Spacer	*228236	1	O-ring packing
221750	1	Ram cylinder	229187	1	Sealing
221752	1	Heat plate	231316	1	Jack cover
221756	1	Speed pump	231658	1	Filter plug & gasket ass'y
*221757	1	Back-up washer	231689	1	Filter plug & yoke valve
*221758	1	Quad ring	231692	1	Hydraulic unit ass'y
*221761	1	Handle & cross bar	231697	1	Oil tank
221767	1	Front ask	231697	1	Hydraulic unit base
221790	1	Front ask	231697	1	Hydraulic unit base
221792	2	Parallel link	*231917	1	Plate spring
221794	1	Pin	231921	1	Release stem
221795	1	Pin	*231964	1	Washer
221796	1	Pin	234678	2	Front wheel
221798	1	Retaining ring	234972	1	Lifting cap
221799	2	Retaining ring	234978	1	Cap housing
221800	2	Spring	236821	1	Lift trip assembly

*Included in 91-385 & 240855 Repair Kits