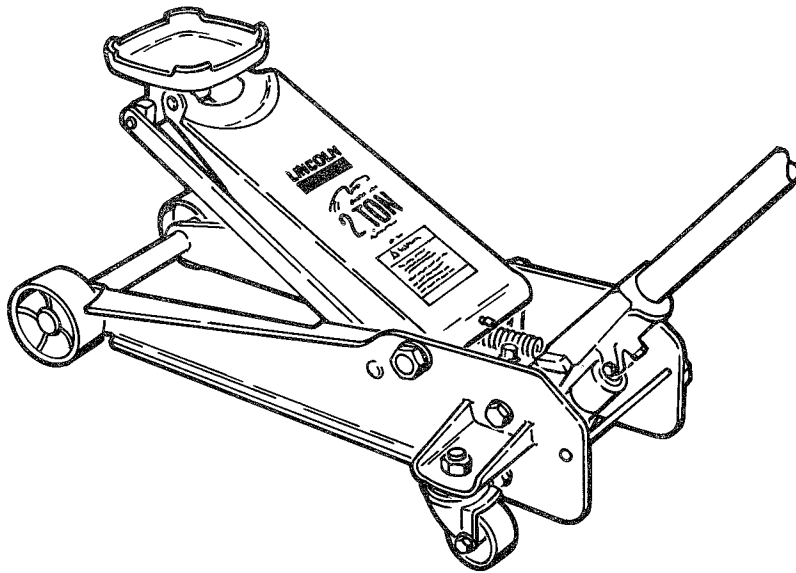


OWNERS MANUAL

IT IS THE RESPONSIBILITY OF THE OWNER AND/OR OPERATOR TO PROPERLY USE AND MAINTAIN THIS SERVICE JACK. CAREFULLY READ AND UNDERSTAND THE INSTRUCTIONS AND WARNINGS IN THIS MANUAL BEFORE OPERATING THIS JACK.

If the operator is not fluent in English, the instructions and warnings shall be read and discussed in the operator's native language, making sure the operator comprehends the contents.

This equipment complies with OSHA Standards where applicable.



CONTENTS	PAGE
Safety Instructions	1
Specifications	2
Assembly Instructions	2
Inspection Instructions	2
Operating Instructions	2
Maintenance Instructions ...	2
Service	2
Parts Breakdown	3-4
Service Parts	4
Troubleshooting Chart	5
Warranty	6

SAFETY INSTRUCTIONS

WARNING

— FOR YOUR SAFETY —
Use vehicle stands to support the vehicle before getting under it.

WARNING

Failure to follow this warning may result in personal injury or property damage.

- Use jack only for lifting vehicles.
- Use vehicle stands after lifting.
- Use on hard, level surfaces.
- Do not exceed capacity rating.
- Do not use as a vehicle dolly.
- Follow instructions in this owners manual.

- Use lift cap lugs and cup to grip vehicle lift surfaces.
- Avoid off-center loading of lift cap.
- Jack wheels must be free to roll while lifting and lowering vehicle.
- Lift only on areas specified by the vehicle manufacturer.
- Lower vehicle slowly being careful not to shock load the jack.
- Reposition the jack if the vehicle pulls the lift arm sideways.

This manual contains **IMPORTANT WARNINGS** and **INSTRUCTIONS** READ AND RETAIN FOR REFERENCE

SPECIFICATIONS

Capacity Rating	2 tons
Low Pick-up Height	3¾ inches
High Lifting Point	20 inches
Lift Cap (Square)	5¾ inches
Handle Length	50 inches
Front Wheel Diameter	3¾ inches
Caster Wheel Diameter ...	2½ inches
Weight	90 lbs.

ASSEMBLY INSTRUCTIONS

1. The service jack is completely assembled except for the handle assembly.
2. Back out the handle retaining bolt on the underside of the handle socket assembly.
3. Check the handle socket opening for adequate grease and insert the handle.
4. Tighten handle retaining bolt to 150-200 in-lbs.

INSPECTION INSTRUCTIONS

1. Before each use, visually inspect the jack for damaged, bent, loose or missing parts.
2. If the visual inspection indicates overloading or shock loading, **Do not use the jack.** A Factory Authorized Service Center will assist you in evaluating the extent of the damage.
3. Operate the jack by pumping the handle. The lift arm and pump should operate smoothly without indications of binding. If jack acts spongy, see instructions on purging air from the hydraulic system.
4. Annual inspections by a Factory Authorized Service Center are recommended for continued safe use of the service jack.
5. A list of Factory Authorized Warranty and Service Centers is available upon request.

OPERATING INSTRUCTIONS

PURGING HYDRAULIC SYSTEM

Before using the jack, it may be necessary to purge trapped air from its hydraulic system:

1. Open release valve by turning the handle counterclockwise.
2. Pump the handle several full strokes to purge the air from the hydraulic circuits.
3. Close the release valve, turning the handle clockwise. Pump the handle raising the lift arm to its maximum height.
4. Continue pumping several times purging air from the ram hydraulic cylinder.
5. Lower the lift arm by turning the handle counterclockwise.
6. The jack should now be free of air. Repeat the procedure if the jack still feels spongy when used.

LIFTING A VEHICLE

1. Check out the vehicle's Service Manual to verify the recommended lifting surfaces on the chassis.
2. Operate the jack to bring the lift cap into light contact with the lifting surface.
3. Check to make sure the lift cap contacts the lift surface squarely and that the lugs engage in a secure manner to prevent lift cap slippage.
4. Make sure the jack is free to roll forward without any wheel obstructions or floor surface irregularities such as uneven expansion joints.
5. Pump the jack handle to raise the vehicle.
6. **Place stands of adequate capacity under the vehicle. Do not get under the vehicle to position the stands.**
7. The vehicle stands must be placed at vehicle manufacturers recommended lift areas that provide stable support for the raised vehicle.
8. Slowly turn the jack handle counterclockwise to lower the vehicle onto the vehicle stands. Lower the vehicle slowly so as not to shock load the vehicle stands.
9. When repairs are completed, raise the vehicle slightly to remove the vehicle stands and gently lower the vehicle to the ground by slowly turning the handle counterclockwise.

MAINTENANCE INSTRUCTIONS

CHECKING OIL LEVEL

1. Place lift arm in its lowest position.
2. Remove filler plug on the oil reservoir by turning counterclockwise.
3. Add clean hydraulic jack oil until the level is near the top of the inner hydraulic cylinder visible through the filler hole.
4. Reinstall the filler plug. Tighten only slightly more than hand tight.
5. **Only use clean hydraulic jack oil. Brake fluids or other oils will damage the seals in the jack.**

LUBRICATION

All jack linkages and moving joints require frequent lubrication. Any chassis grease and motor oil can be used.

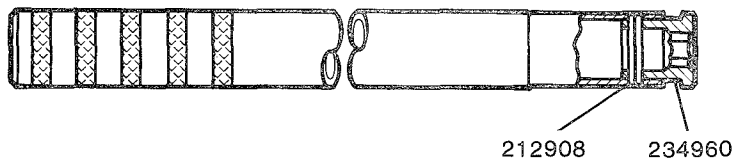
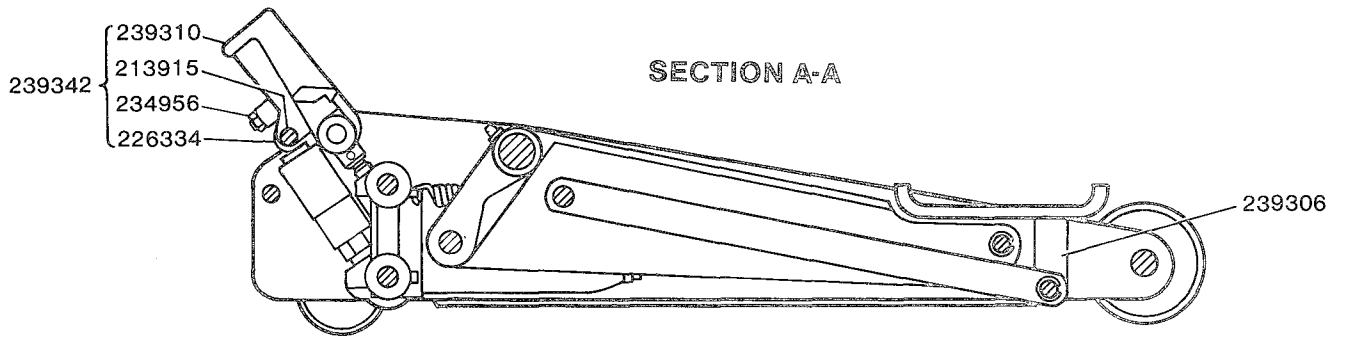
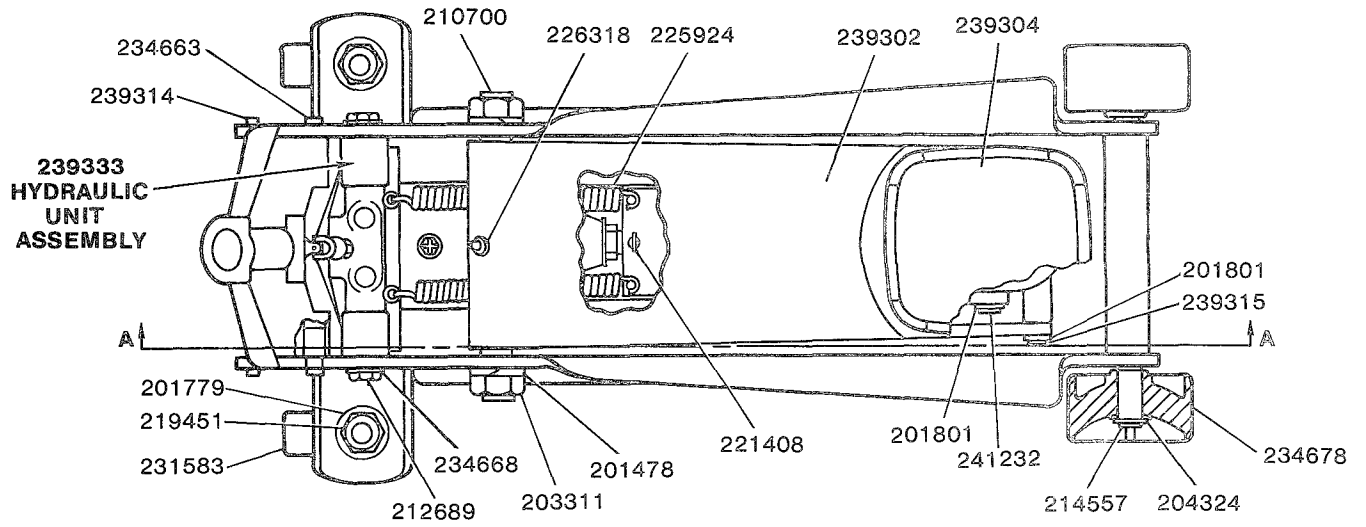
1. Remove the handle and grease the lower end where it rotates in the socket casting.
2. Use a grease gun and grease the lift arm fulcrum pin grease fitting until grease appears at the ends of the shaft.
3. Apply oil regularly to the pump roller and handle socket side plate pivot pins.
4. Oil all lift arm linkages, universal joint, front wheels and rear casters.

SERVICE

If the troubleshooting procedures do not correct the problem, contact your nearest Authorized Warranty and Service Center. When submitting any jack to be repaired be sure to state the nature of the problem and indicate whether an estimate of the repair cost is needed.

When ordering replacement parts always provide the Model Number, Series Letter, Part Number and Description.

Lincoln provides a distributor network that stocks equipment and replacement parts.

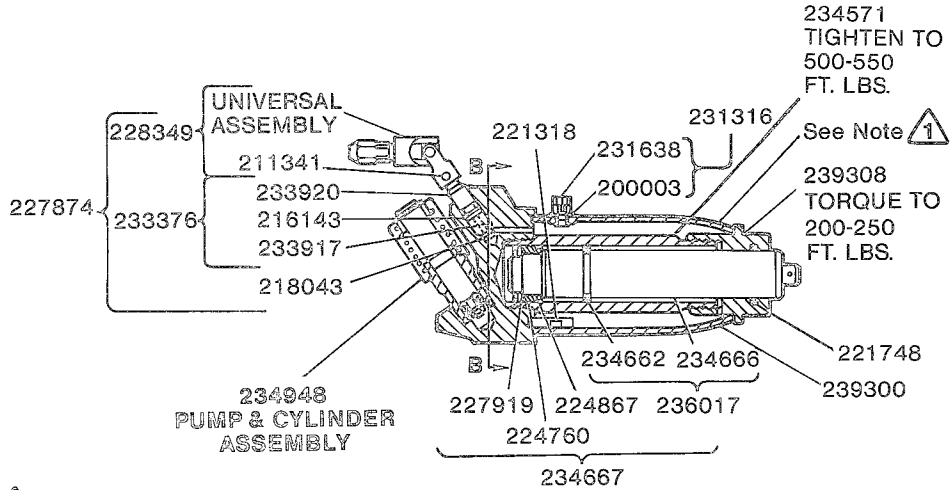
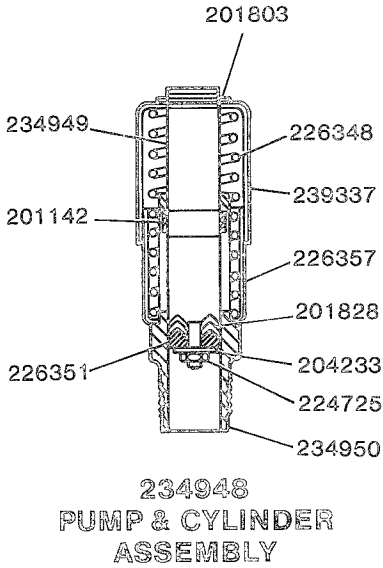
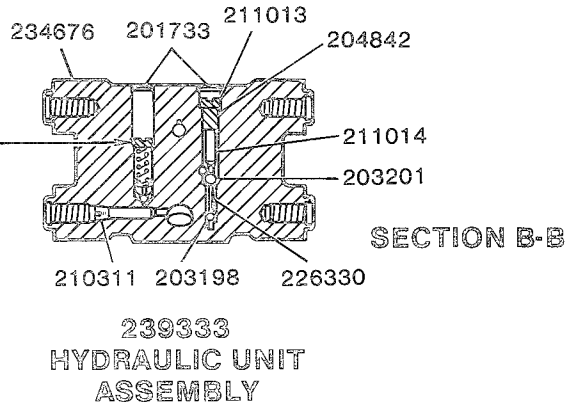


234957
HANDLE ASSEMBLY

Label Kit	Seal Repair Kit
239403	240530

DO NOT ADJUST

Safety valve is factory set. If adjustment or repair is required, return jack to nearest Authorized Warranty and Service Center.



NOTE Apply light coating of Loctite Gasket Eliminator[®] 515 or equivalent to ends of tank before assembling tank nut.

SERVICE PARTS

Part	Qty.	Description	Part	Qty.	Description	Part	Qty.	Description
200003	1	Gasket	219451	2	Nut	234662	1	Snap ring
201142	1	Cross pin	221318	1	Suction screen	234663	2	Pin
201478	2	Lockwasher	221408	1	Cotter pin	234666	1	Ram
201733	2	Expansion plug	*221748	1	Quad ring	234667	1	Ram assembly
201779	2	Washer	224725	1	Nut	234668	4	Washer
201801	4	Retaining ring	224760	1	Heel plate	234676	1	Unit block
201803	1	Retaining ring	224867	1	Back-up washer	234678	2	Front wheel
*201828	3	V-packing	225924	2	Spring	234948	1	Pump & cylinder ass'y.
*203198	1	Ball	226318	1	Grease fitting	234949	1	Pump piston
*203201	1	Ball	226330	1	Suction spacer	234950	1	Pump cylinder
203311	2	Nut	226334	1	Pump roller	234956	1	Hex head screw
204233	1	Washer	226348	1	Pump spring	234960	1	Lower end
204324	2	Washer	*226351	1	Rubber washer	236017	1	Ram & ring ass'y.
*204842	1	Gasket	226357	1	Cup - pump sleeve	239300	1	Oil tank
210311	1	Pipe plug	227874	1	Release valve ass'y.	239302	1	Bell crank assembly
210700	1	Fulcrum pin	*227919	1	U-cup packing	239304	1	Lift cap
211013	1	Pressure plug	228349	1	Universal assembly	239306	1	Lift cap housing
211014	1	Discharge spacer	231316	1	Plug & gasket ass'y.	239308	1	Tank nut
211341	1	Rivet	231583	2	Rear caster	239310	1	Handle socket
212689	4	Bolt	231638	1	Filler plug & vent ass'y.	239314	1	Shield bar
212908	1	Groove pin	233376	1	Release stem ass'y.	239315	1	Pin
213915	1	Pin	233917	1	Spring	239333	1	Hydraulic unit ass'y.
214557	2	Retaining ring	233920	1	Release stem	239337	1	Pump sleeve
216143	1	O-ring	234571	1	Cylinder	239342	1	Handle socket ass'y.
218043	1	Valve				241232	1	Pin

* Included in 240530 Seal Repair Kit.

TROUBLESHOOTING

Important: As with any hydraulic system, this jack may become "air bound" from being tipped over during shipment or use. If jack feels spongy when operated, refer to the procedure on "purging the hydraulic system" in the operating instructions of this manual.

Problem	Solution
◦ Jack will not hold load or handle raises.	Discharge ball is probably not sealing. Hydraulic system and oil may be dirty. Manually flush hydraulic system by rapidly raising and lowering lift arm by hand. Operate the release valve as required to raise and lower the lift arm. Lift arm can be raised by placing foot on front axle.
◦ Jack feels spongy or will not lift.	Purge hydraulic system of air. See operating instructions.
◦ Jack will not lift to full height.	The hydraulic system is probably low on oil or might be overfilled. Check the oil level.
◦ Handle and release valve difficult to turn.	Grease the handle where it rotates in the handle socket. Oil the universal joint. Check release stem threads for binding.
◦ Lift arm will not lower properly.	Return spring broken or linkages binding. Lubricate the lift arm linkages and pull link joints.