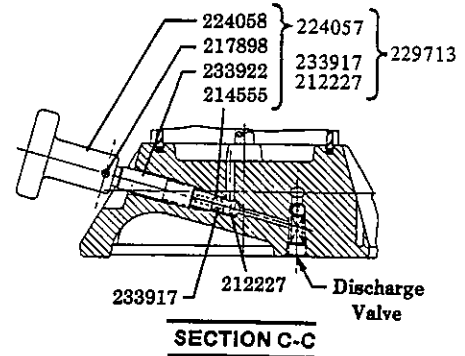
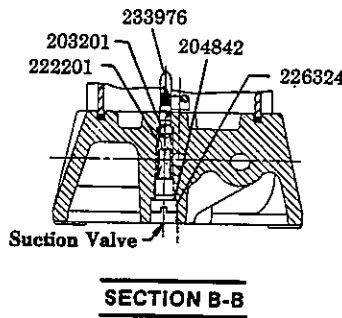
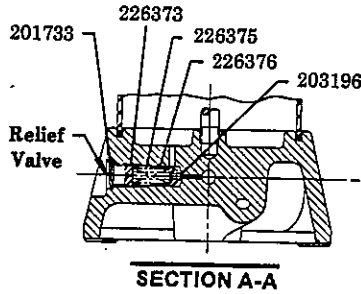




Models 91-104, 93104 AIR OPERATED HYDRAULIC PUMP

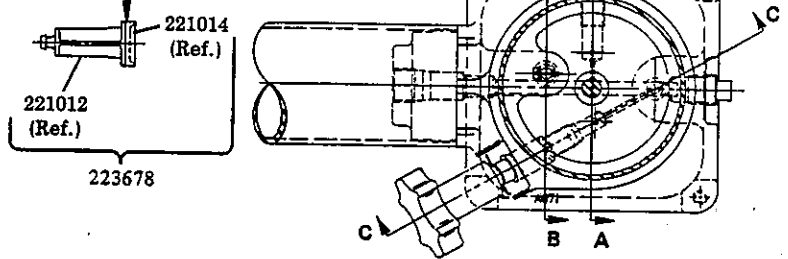
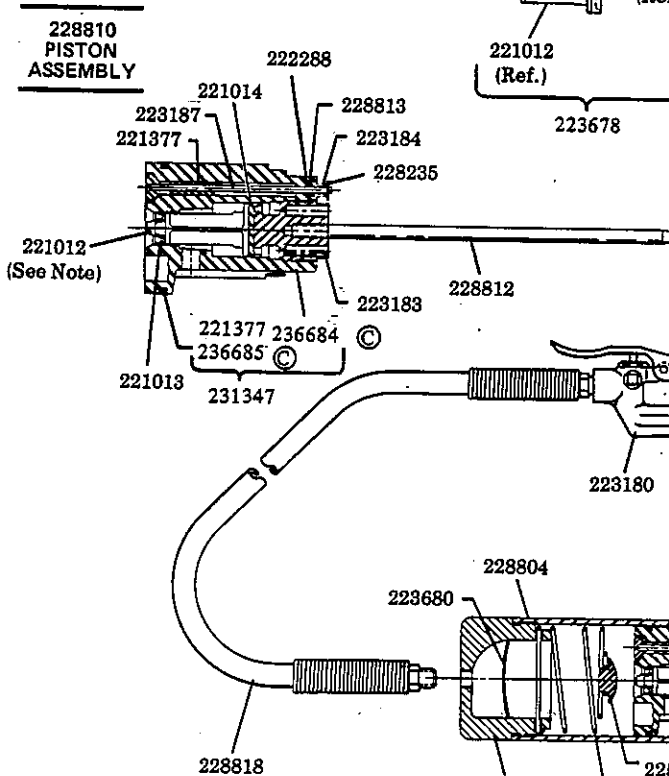
10,000 PSI MAX. HYDRAULIC PRESSURE

Series "B"



NOTE:
Extend 221012 Piston from 236684 ©
Piston Body. Assemble 221013 U-cup
Packing onto 221012 Piston and
re-insert.

Bond packing to piston with Eastman
#910 Adhesive. Keep outer surface
free from adhesive.



© Indicates Change



LINCOLN, One Lincoln Way
St. Louis, Missouri 63120-1578
(314) 679-4200 Customer Service, (314) 679-4300

SECTION - W7
PAGE - 2C

OVERALL DIMENSIONS

Height: 10-3/16"
 Width: 5-9/16"
 Length: 16-3/16"

MODEL	LABEL KIT NO.	REPAIR KIT NO.
91-104	240070	91-319
93104	240071	240511
95104	240072	240511

TROUBLE SHOOTING

PROBLEM	SOLUTION
1) Pump stalls under heavy load.	Air hose might be plugged -- remove obstruction from air hose. Air pressure might be too low -- 140 psi air pressure required to obtain 10,000 psi oil pressure. Pump may need lubrication -- put 1/4 ounce of SAE 30 weight oil into the air inlet to lubricate the pump mechanism.
2) Ram will not extend full height.	Oil capacity of pump is not great enough for ram. Pump oil supply low -- retract ram fully and remove the filler plug on top of the pump. Fill the reservoir with clean hydraulic jack oil and replace the plug.
3) Ram moves erratically.	System may be air bound -- set the pump in its normal position on a bench and place the ram on the floor, then fully extend and retract the ram two or three times.

If the above procedures do not correct the problem, contact your nearest service depot. When submitting any equipment to be repaired, be sure to state the nature of the problem and indicate whether an estimate of the repair cost is needed.

SERVICE PARTS

PART	QUAN.	DESCRIPTION	PART	QUAN.	DESCRIPTION	PART	QUAN.	DESCRIPTION
*200003	1	Gasket	223184	1	Spring	228809	1	Trip spring
*201733	1	Expansion plug	223187	1	Valve plunger & seat	228810	1	Piston assembly
203196	1	Ball, 5/32" Dia.	223203	2	Trip washer	228812	1	Pump rod
*203201	2	Ball, 5/16" Dia.	223678	1	Piston & packing ass'y.	228813	1	Washer
*204842	1	Gasket	*223680	1	Screen	228814	1	Gland nut
210311	1	Pipe plug	224057	1	Release stem ass'y.	*228815	1	U-cup packing
212227	1	Release valve poppet	224058	1	Hand knob	*228816	1	Washer
212562	1	Filler screw	225371	1	Cushion	*228817	1	Gasket
*214555	1	O-ring	226324	1	Plug	228818	1	Air hose
216647	1	Spring	226373	1	Adjusting nut	229713	1	Release stem ass'y.
217898	1	Roll pin	226375	1	Spring	230394	1	Washer (nylon)
221012	1	Piston	226376	1	Adapter	230674	1	Pipe plug
*221013	1	U-cup packing	228235	1	Cotter pin	231347	1	Piston & roll pin ass'y.
221014	1	Pump packing	228799	1	Hold-down stud	232804	1	Valve base
221365	1	Handle grip	228800	1	Nut	232805	1	Reservoir
221377	1	Roll pin	228804	1	Pump cylinder	236684	1	Piston body
222201	1	Spring	228805	1	Piston return spring	236685	1	
*222288	1	O-ring	228806	1	Spring & cushion ass'y.	*233917	1	Release valve spring
223180	1	Air valve	228807	1	Bumper spring	233922	1	Release stem
223183	1	Pump retainer plug	228808	1	Cylinder cap	233976	1	Suction screen

*Included in 240511 Repair Kit

NEW ORLEANS, LA 70116

RETAIN THIS INFORMATION FOR FUTURE REFERENCE

When ordering replacement parts, list: Part Number, Description, Model Number, and Series Letter.

LINCOLN provides a Distributor Network that stocks equipment and replacement parts.