



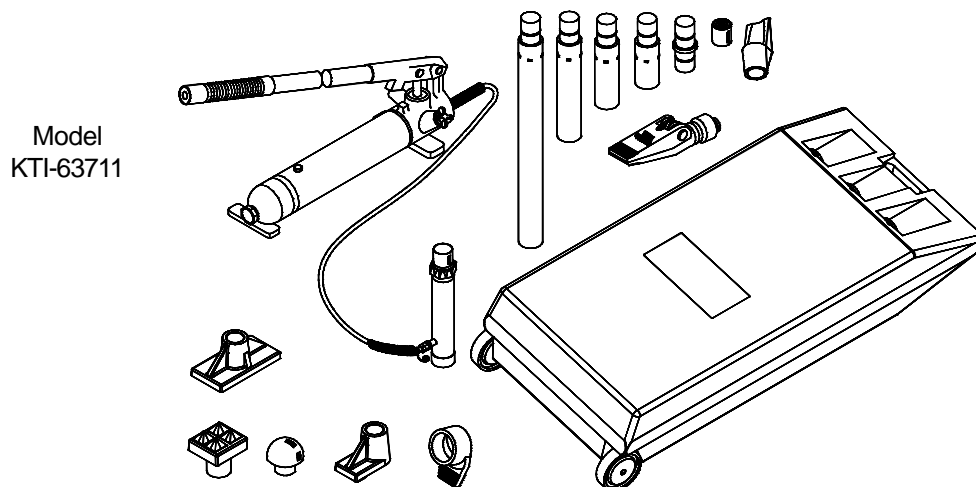
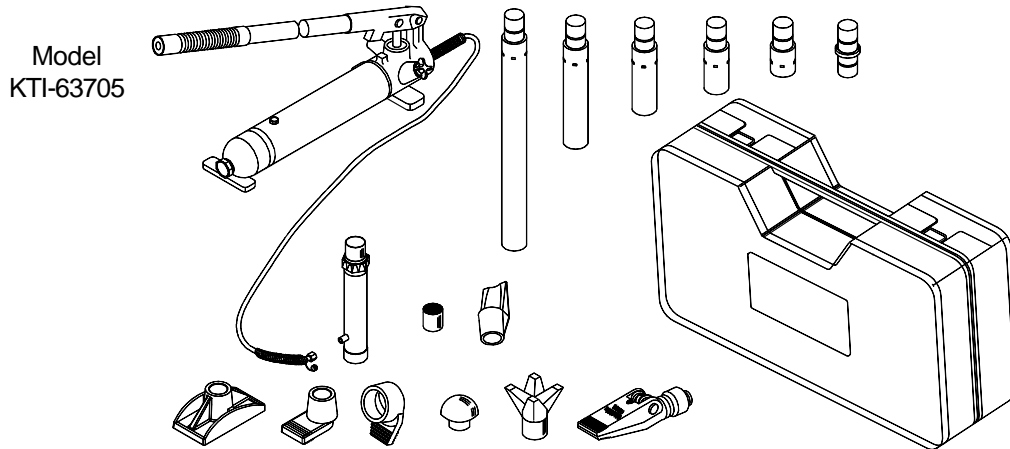
PRO-SERIES

Operating Instructions & Parts Manual

Body Repair Kit

Model Number
KTI-63705
KTI-63711

Capacity
4 Ton
10 Ton



K-Tool International
31111 Wixom Rd., Wixom, MI 48393
E-mail: sales@ktool.com
(248) 669-5000

KTI-63705-M0
Printed in China

Save these instructions. For your safety, read and understand the information contained within. The owner and operator shall have an understanding of this product and safe operating procedures before attempting to use this product. Instructions and Safety information shall be conveyed in the operators native language before use of this product is authorized. Make certain that the operator thoroughly understands the inherent dangers associated with the use and misuse of the product. If any doubt exists as to the safe and proper use of this product as outlined in this factory authorized manual, remove from service. **Inspect before each use.** Do not use if broken, bent, cracked or otherwise damaged parts are noted. If the ram has been or suspected to have been subjected to a shock load (a load dropped suddenly, unexpectedly upon it), discontinue use until checked out by an authorized factory service center. Owners and operators of this equipment shall be aware that the use and subsequent repair of this equipment may require special training and knowledge. It is recommended that an annual inspection be done by qualified personnel and that any missing or damaged parts, decals, warning / safety labels or signs be replaced with factory authorized replacement parts only. Any kit that appears to be damaged in any way, is worn or operates abnormally shall be removed from service immediately until such time as repairs can be made. Labels and Owners Manuals are available from manufacturer (see Replacement Parts, pages 6, 7).

PRODUCT DESCRIPTION

KTI Body Repair Kits are designed to be used for pushing, spreading, and pressing of vehicle body panels as well as various component parts and assemblies. A variety of attachments are included. Pumps are rated from 8,000 to 10,000 PSI. Rams are rated from 4 to 10 tons.

WARNING: when extension tubes and/or offset attachments are used, the rated capacity is always reduced by 50 % for each tube or attachment connected. See Parts Section for identification of "offset" attachments.

SPECIFICATIONS

Model	Pump Capacity	Ram Capacity	Ram		Number of Attachments	Operating Force	Weight
			Closed Height	Extended Height			
KTI-63705	8000 psi	4 ton	11"	15 3/4"	14	101 lbs	56 lbs
KTI-63711	10000 psi	10 ton	13 5/8"	19 3/4"	13	79 lbs	88 lbs

BEFORE USE (refer to Figure 1)

1. Inspect before each use. Do not use if bent, broken, leaking or damaged components are noted.
2. Ensure that product and application are compatible.
3. Check to ensure that all parts of your kit are included (see illustration and parts list).
4. Carefully remove the dust caps and plugs from hose coupler and ram coupler.
5. Connect hose coupler to ram coupler, ensure that there are no fluid leaks.
6. Locate and open release valve. Pump handle a few strokes to purge air from system. Close release valve and pump handle until ram is fully extended, then open release valve until ram has fully retracted.
7. With pump in normal, horizontal position, locate and open oil filler screw (located centrally on reservoir body). This will aid in the release of air trapped within the reservoir. Retighten the oil filler screw.
8. If using air actuated units, an air source of at least 7.8 CFM @ 90psi is required.

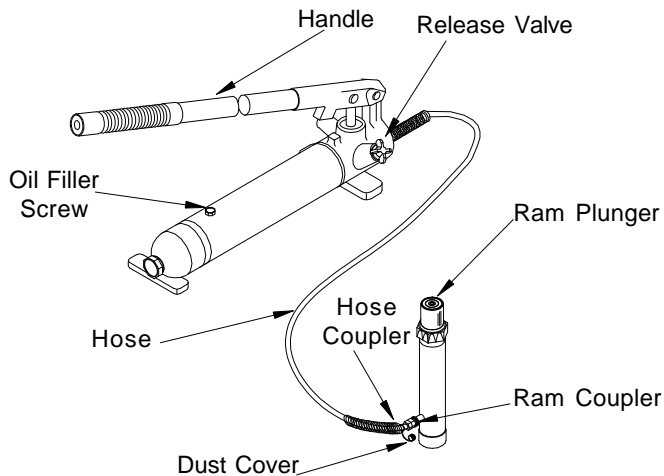


Figure 1- KTI-63705 and KTI-63711 Nomenclature

GENERAL SAFETY INFORMATION

1. Ensure that attachments are fully engaged before applying load.
2. Ensure that load is centrally applied to attachment or ram saddle. Do not load off center.
3. Always monitor the force applied to workpiece by using a load cell and indicator or you may monitor pressure developed in the ram by using an inline pressure gauge, then calculate the applied force using the formula:
$$F = P \times A$$
where F = lbs force, P = pressure in PSI, and A = effective ram area in².
Ram Area of KTI-63705 is: 0.998 in²
Ram Area of KTI-63711 is: 2.431 in²
4. If bowing or bending of ram or any attachment occurs during use, **"STOP"**, release pressure immediately and reconsider application. Application may not be compatible with product, a ram kit with a higher capacity may be needed.



WARNING

- Study, understand, and follow all instructions provided with and on this device before use.
- Do not exceed rated capacity.
- Use only on hard, level surfaces capable of sustaining rated capacity loads.
- Do not open oil filler screw unless ram is fully retracted.
- Always wear safety glasses when using this equipment.
- Do not use as a vehicle lifting device or as a vehicle support.
- When extension tubes and/or offset attachments are used, the rated capacity is always reduced by 50% for each tube or attachment connected.
- Any attachment that is not loaded centrally, as through the centerline of the ram, is considered to be "offset". See parts section for identification of offset attachments.
- Do not modify this device.
- Failure to heed these markings may result in personal injury and/or property damage.

OPERATION

Note: Inspect before each use for evidence of fluid leaks, damaged hydraulic fittings, bent or broken attachments and missing parts.

1. Locate and close release valve by turning it clockwise until firmly closed. (Do not over tighten)
2. Operate by pumping handle. This will send fluid from the pump reservoir into the high pressure hose assembly and into the ram assembly.
3. Continue pumping until ram reaches desired height.

Note: Pump may be used in horizontal and vertical position as illustrated (See figure 2).

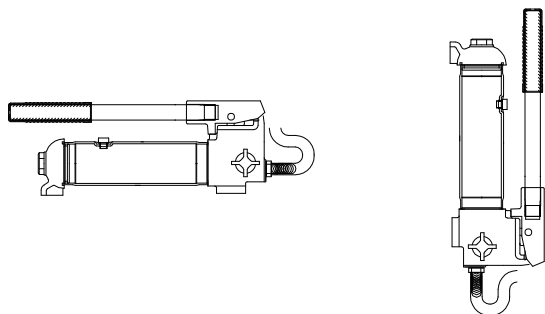


Figure 2 - Horizontal and Vertical Position

To Release Pressure on work piece:

Slowly, carefully turn the release valve counterclockwise until ram retracts to desired position. **Never turn release valve more than 1/2 full turn.** The ram return system is spring loaded.

MAINTENANCE

Important: Use only a good grade hydraulic jack oil. We recommend Mobil DTE 13M or equivalent.

Reinstall oil filler screw. Avoid mixing different types of fluid and **Never** use brake fluid, turbine oil, transmission fluid, motor oil or glycerin. Improper fluid can cause premature failure of the ram and the potential for sudden and immediate loss of load.

Adding oil

1. With ram fully lowered, set pump unit in its normal, level position. Locate and remove oil filler screw. (found centrally on the pump reservoir)
2. Fill until oil is within 3/8" of the oil filler screw hole opening, reinstall oil filler screw.

Changing oil

For best performance and increased system life, replace the complete fluid supply at least once per year.

1. With ram fully lowered, remove the oil filler screw from the pump reservoir as above.
2. Lay the pump on its side and drain the fluid into a suitable container.

Note: Dispose of hydraulic fluid in accordance with local regulations.

3. Set pump in its level upright position.
4. Fill with good quality oil to within 3/8" of the oil filler screw hole opening. Reinstall oil filler screw.

Lubrication

A coating of light lubricating oil to pivot points and hinges will help to prevent rust and assure that pump assemblies move freely.

Cleaning

Periodically check the pump piston and ram for signs of rust or corrosion. Clean as needed and wipe with an oily cloth.

Note: Never use sandpaper or abrasive material on these surfaces !

Storage

When not in use, store with the pump piston and ram fully retracted.

TROUBLESHOOTING

Symptom	Possible Causes	Corrective Action
Ram will not lift load	<ul style="list-style-type: none">• Release valve not tightly closed• Overload condition	<ul style="list-style-type: none">• Ensure release valve tightly closed• Remedy overload condition
Ram *bleeds off after lift	<ul style="list-style-type: none">• Release valve not tightly closed• Hydraulic unit malfunction	<ul style="list-style-type: none">• Ensure release valve tightly closed• Replace Ram and / or Pump
Ram will not lower after unloading	<ul style="list-style-type: none">• Reservoir overfilled• Linkages binding	<ul style="list-style-type: none">• Drain fluid to proper level• Clean and lubricate moving parts
Poor performance	<ul style="list-style-type: none">• Fluid level low• Air trapped in system	<ul style="list-style-type: none">• Ensure proper fluid level• With ram fully retracted, remove oil filler screw to let pressurized air escape, then reinstall oil filler screw
Will not lift to full extension	<ul style="list-style-type: none">• Fluid level low	<ul style="list-style-type: none">• Ensure proper fluid level

* "Bleeding off" means that jack begins to slowly lower rather than keep load at height.

ONE YEAR LIMITED WARRANTY

For a period of one (1) year from date of purchase, **KTI**, will repair or replace, at its option, without charge, any of its products which fails due to a defect in material or workmanship, or which fails to conform to any implied warranty not excluded hereby.

Performance of any obligation under this warranty may be obtained by returning the warranted product, freight prepaid, to K-Tool International 31111 Wixom Rd. Wixom, MI 48393, phone (248)669-5000.

Except where such limitations and exclusions are specifically prohibited by applicable law. (1) the CONSUMER'S SOLE AND EXCLUSIVE REMEDY SHALL BE THE REPAIR OR REPLACEMENT OF DEFECTIVE PRODUCTS AS DESCRIBED ABOVE, and (2) **KTI** SHALL NOT BE LIABLE FOR ANY CONSEQUENTIAL OR INCIDENTAL DAMAGE OR LOSS WHATSOEVER, and (3) THE DURATION OF ANY AND ALL EXPRESSED AND IMPLIED WARRANTIES, INCLUDING WITHOUT LIMITATION, ANY WARRANTIES OF MERCHANTABILITY AND FITNESS FOR A PARTICULAR PURPOSE, IS LIMITED TO A PERIOD OF ONE (1) YEAR FROM DATE OF PURCHASE.

Some states do not allow limitations on how long an implied warranty lasts, so the above limitation may not apply to you. Some states do not allow the exclusion or limitation of incidental or consequential damages, so the above limitation or exclusion may not apply to you. This warranty gives you specific legal rights, and you may also have other rights which vary from state to state.

REPLACEMENT PARTS

Available Parts: Please refer to the Parts drawings when ordering parts. Not all components of this kit are replacement items, but are illustrated as a convenient reference of location and position in the assembly sequence. When ordering parts, give Model number, serial number and description below. Contact KTI at (248) 669-5000 or E-mail: sales@ktool.com.

Model KTI-63705

Ref No.	Part#	Description	Quantity
1	F040-41500-000	Extension Tube (19-1/2")	1
2	F040-41100-000	Extension Tube (16-1/2")	1
3	F040-41200-000	Extension Tube (8-1/2")	1
4	F040-41300-000	Extension Tube (6-1/8")	1
5	F040-41400-000	Extension Tube (3")	1
6	F040-41600-000	Male connector	1
7	F040-40001-000	Wedge Head	1
8	F040-40003-000	Serrated Saddle	1
9	F040-44000-000	Flat Base	1
10	F040-40005-000	Plunger Toe	1
11	F040-40004-000	Ram Toe	1
12	F040-43000-000	Rubber Head	1
13	F040-40002-000	Combination Head	1
14	F040-42000-000	Hydraulic Spreader (1000 lb. capacity)	1
15	F040-20012-000	Dust Cover - Hose	1
16	F040-34000-000	Dust Cover - Ram	1
17	F040-22201-000	Hose Coupler, Male	1
18	F040-90009-K02	Ram Coupler Assy, Female	1
19	F040-30000-000	Ram Assembly	1
20	F040-21000-000	Release Valve Knob	1
21	F040-90009-K03	Pump Handle	1
22	F040-22000-000	Hose Assembly (with coupler)	1
23	F040-90009-K01	Oil Filler Screw	1
24	F040-20000-000	Pump Assembly	1
25	F040-00001-000	Blow Molded Case	1
-	F0400S-85	Repair Kit	-
-	KTI-63705-L0	Label (not shown)	1
-	KTI-63705-M0	Manual	1

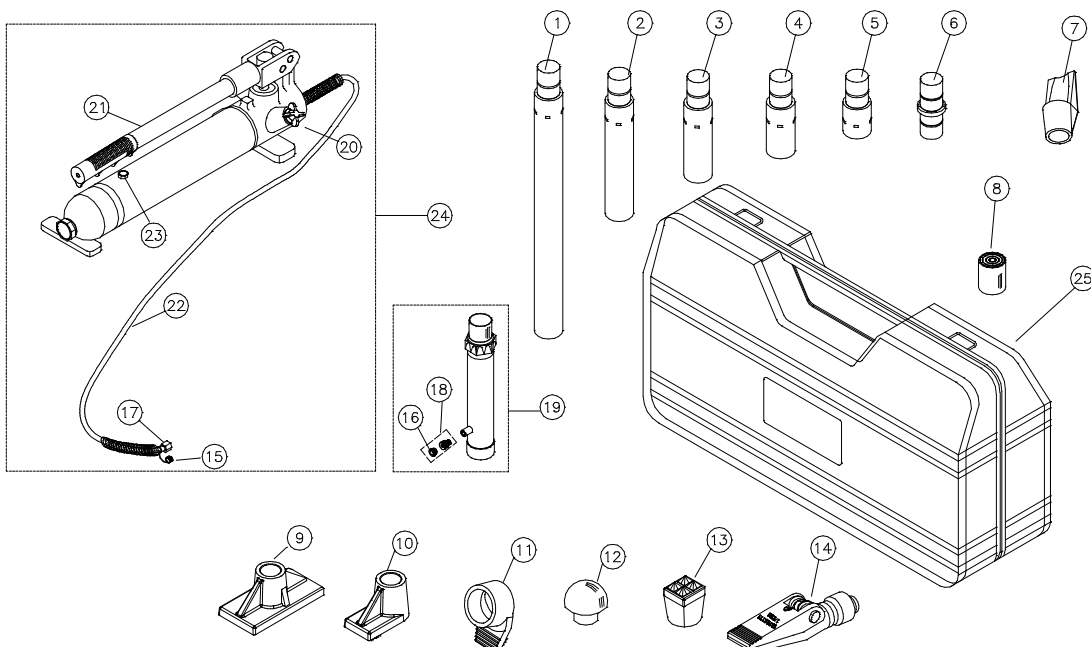


Figure 3 - Replacement Parts Illustration for Model No. KTI-63705

[illegible]