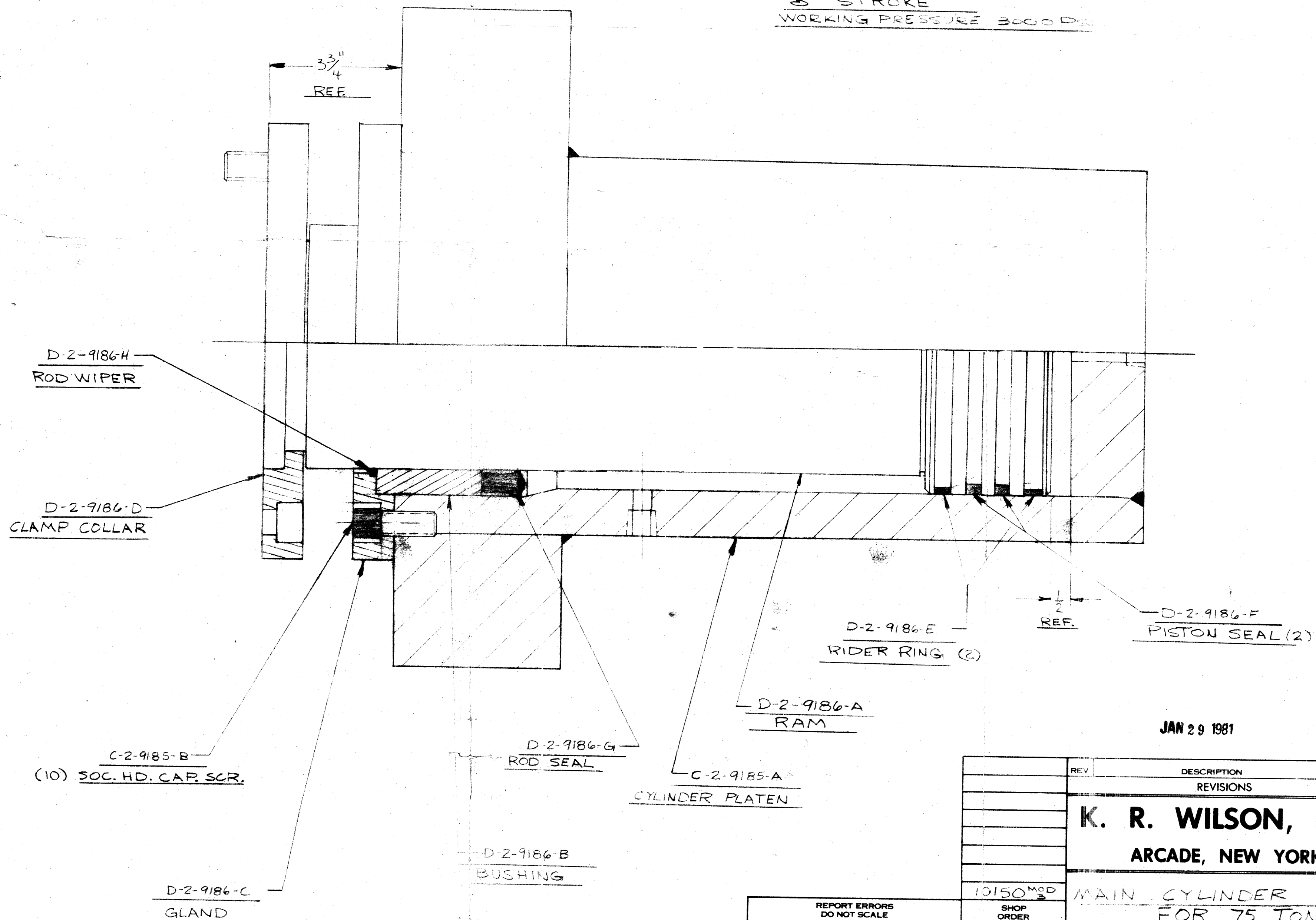


ITEM	NO. REQ'D.	DESCRIPTION	MAT'L	ERW EA
------	---------------	-------------	-------	-----------

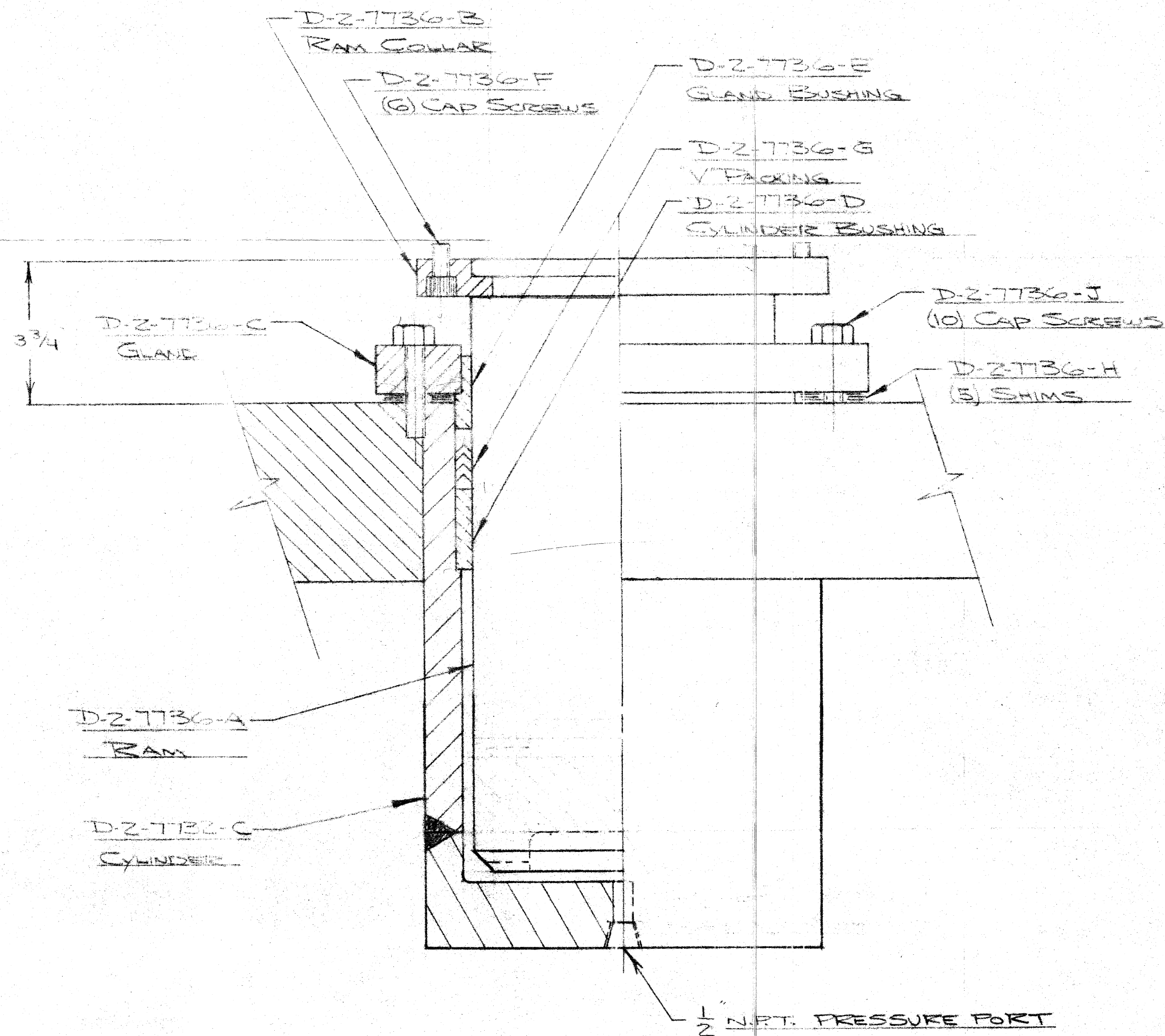
8" BORE
7" ROD
8" STROKE
WORKING PRESSURE 3000 PSI



JAN 29 1981

REV	DESCRIPTION	DATE	BY
REVISIONS			
	K. R. WILSON, INC.		
	ARCADE, NEW YORK		
	10150 MOD 3		
	MAIN CYLINDER ASSY		
	FOR 75 TON		
	UC ⁴ -SA PRESS		
	DRAWN BY: D.P.S.	DATE: 12-19-79	
	CHECKED BY: <i>GB</i>	C-2-9187	
	SCALE: 2"=1'-0"		

REPORT ERRORS DO NOT SCALE		SHOP ORDER	
UNLESS OTHERWISE SPECIFIED:			
1. TOLERANCE FRACTIONAL .XX DEC. .XXX DEC.	ANGULAR WELDMENT CAST	2. BREAK ALL SHARP EDGES	
		3. INSIDE RADI 1/32"	
		4. SURFACE FINISH	✓



JAN 14 1977

REV. A	REV TO AGREE W/ DETAILS FOR S.O. 32440 WAS 4" STROKE	22 DEC 76	AFB
REV.	DESCRIPTION	DATE	BY
REVISIONS			
K. R. WILSON, INC.			
ARCADE, NEW YORK			
32440 10150 SHOP ORDER			
MAIN CYLINDER ASSY. 3" BORE - 8" STROKE S.A.			
UNLESS OTHERWISE SPECIFIED USE		DRAWN BY: DRE	
1. TOLERANCE FRACTIONAL $\pm \frac{1}{4}$ " DECIMAL $\pm .005$ " ANGULAR $\pm 0^\circ - 15'$		DATE: JUNE 76	
2. BREAK ALL SHARP CORNERS & EDGES		CHECKED BY: [Signature]	
3. FOR SURFACE FINISH SYMBOLS		SCALE: 3/8" = 1"	
		C-2-7737	