



# **OPERATOR'S MANUAL**

## **JSJ-5M SERVICE JACK**

**Stock No. M-454350**

## JSJ-5M SERVICE JACK

Your JET Service Jack is engineered and fabricated to suit your requirements. With our experienced technical background, a rigid inspection by our well organized Quality Assurance Group, your jack is guaranteed with confidence for its long and trouble-free life.

### 1. Precautions

1. This jack is designed for lifting vehicles only.
2. The vehicle owner's manual should be consulted prior to the lifting of the vehicle.
3. The jack **must** be on level and solid ground with wheels of vehicle facing straight ahead.
4. **No one** should remain in a vehicle that is being lifted.
5. When lifting the vehicle, be sure to place the axle right on the center of the jack saddle.
6. After lifting the vehicle, be sure to **place safety stands** under the axles.
7. **NEVER** get under a vehicle that is supported only by a jack.
8. **NEVER** move the jack while it is supporting the vehicle.
9. When lowering the vehicle, make sure **nobody** is around or under the lifted vehicle and **slowly** lower the vehicle with special attention to jack saddle.
10. Safety valve is factory adjusted and no further adjustment is required.
11. While not in use, **always** keep the handle straight up and locked so that it won't fall.

### 2. Operating Instructions

#### Before using the jack:

1. Insert the handle into handle socket fully and tighten the thumb screw on the socket securely.
2. Open the release valve by turning the release valve control knob counter-clockwise and pump the handle about 6 full strokes to let the air out of the hydraulic system.

Then close the release valve by turning the release valve control knob clockwise as far as it will go. Pump the handle up to full extension of jack. Lower the jack by opening the release valve.

**Note:** If the jack does not immediately respond to pump action, repeat step 2 above.

#### To use the jack:

1. To raise the vehicle, close the release valve by turning release valve control knob clockwise as far as it will go. Then carefully position the jack under the vehicle. Pull the lock lever up and push it over to the left to slide into upper slot, then start pumping the handle. A foot pumping pedal is also provided for faster operation. Pump the jack handle to lift the vehicle to the desired height.
2. To lower the vehicle, **SLOWLY** and **CAREFULLY** rotate the release valve control knob counterclockwise. Descending speed can be controlled by opening amount of release valve.
3. When the jack is transported, the handle may be removed and carried separately.

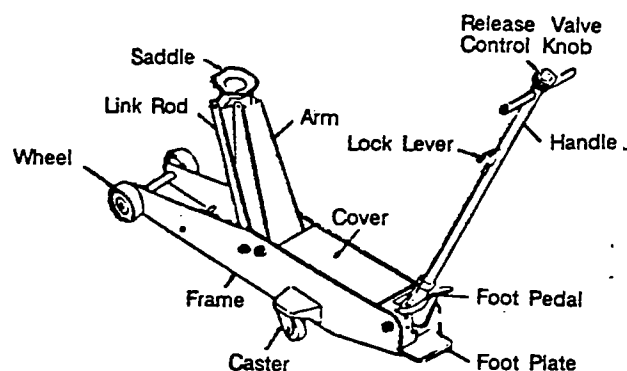
### 3. Specifications

MODEL	JSJ-5M
STOCK	454350
CAPACITY	5 TON
MIN. HEIGHT	5-7/8 in.
MAX. HEIGHT	22 in.
OVERALL LENGTH	55-1/2 in.
OVERALL WIDTH	14-5/16 in.
HANDLE	42-1/8 in.
WEIGHT	187 lbs.

### FEATURES

Strong steel side plate  
 Swivel saddle  
 Heat Treated parts at maximum stress points  
 Heavy duty application  
 Locking "T" bar handles and foot pump  
 Hydraulic cylinder parts high pressure tested at the factory

### 4. Name of Principal Parts



### 5. Maintenance and Care

Check Points	Check Item	Remarks
Arm	Functional condition (Pump the jack to its full lifting height with no load then check smooth action of the lift arm)	Lubricate Pin and Functional portions Replace distorted or damaged parts
Front Wheel	Functional condition	Lubricate functional portion Replace damaged or worn-out
Rear Wheel	Functional condition	Lubricate functional portions Replace damaged or wear parts Tighten securely loose bolts
Power Unit	Proper oil level  Oil leakage	Supply oil, if necessary (Replace oil in the reservoir at least once a year) Replace packing
Handle	Functional Condition or loose	Lubricate pin or functional portions Tighten securely loose bolts Replace damaged parts

Note: 1. Oil for functional portion: Lubricatory oil  
 2. Oil for jack: Hydraulic jack oil or bearing oil TSO VG 10  
 NEVER use brake fluid or any other high viscous or volatile oil

**FILE**

Jsg-5M

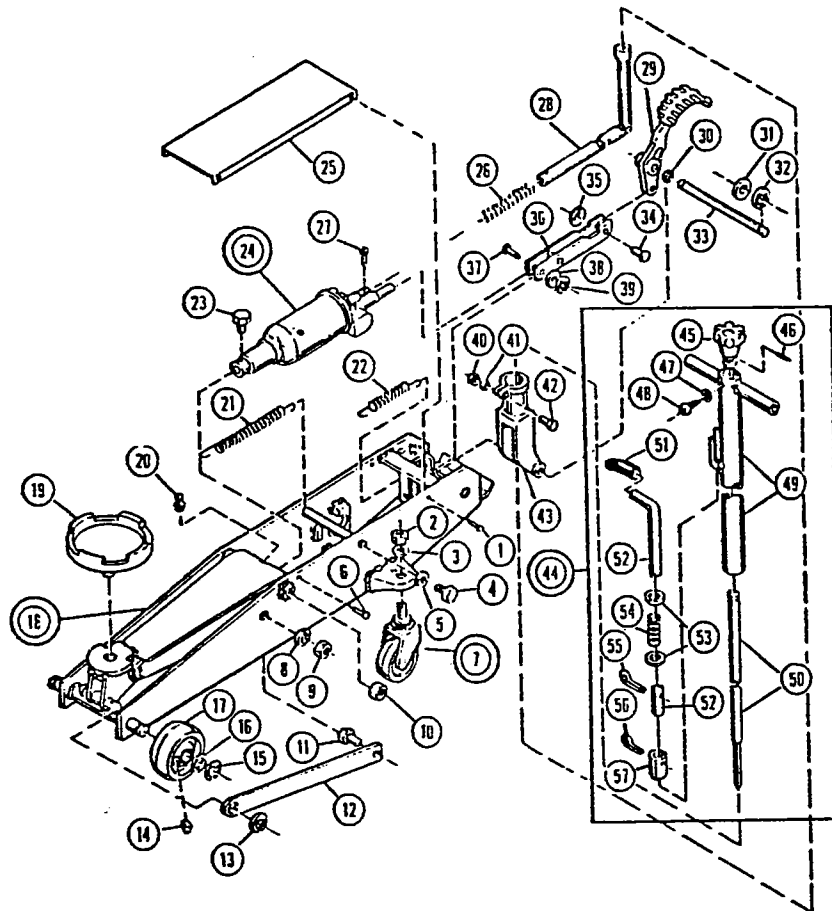
**6. Possible Problems and Remedies**

Possible Problem	Possible Cause	Remedy
Will not lift at all	Release Valve not properly closed No oil in system Delivery Valve and/or By-Pass Valve malfunctioning (Valve Ball not properly seated) Packing worn out or defective	Tighten securely  Fill to prescribed level Clean to remove dirt or foreign matter and replace oil  Replace Packing
Will lift only part way	Oil level low or too high	Fill or remove excess oil
Will lift load, but will not hold	Either of the following valves not functioning a. Suction Valve b. Delivery Valve c. Release Valve d. By-Pass Valve Packing worn out or defective	Inspect Valves-clean and adjust seat surface  Replace Packing
Will not lower	Release Valve not opening	Clean and adjust Release Valve
Poor lifting	Pump Packing defective or Valves malfunctioning Dirty oil Air in system	Replace Packings and/or clean Valves Replace oil Remove air from system
Will not lower completely	Piston Rod bent or marred Jack Spring damaged Link section warped or deformed due to possible over-loading	Replace Piston Rod Replace Spring Replace warped parts

# FILE

JSJ-5M

## JSJ-5M



### PART NO.

### DESCRIPTION

JSJ5M-01	RIVET
JSJ5M-02	NUT
JSJ5M-03	SPRING WASHER
JSJ5M-04	BOLT
JSJ5M-05	SPRING WASHER
JSJ5M-06	SCREW
JSJ5M-07	REAR WHEEL ASSY
JSJ5M-08	SPRING WASHER
JSJ5M-09	NUT
JSJ5M-10	NUT
JSJ5M-11	LINK ROD BOLT
JSJ5M-12	LINK ROD
JSJ5M-13	STOPPER RING
JSJ5M-14	GREASE NIPPLE
JSJ5M-15	STOPPER RING
JSJ5M-16	FRONT COLLAR
JSJ5M-17	FRONT WHEEL
JSJ5M-18	FRAME & LIFT ARM ASSY
JSJ5M-19	SADDLE
JSJ5M-20	GREASE NIPPLE
JSJ5M-21	RETURN SPRING
JSJ5M-22	PEDAL SPRING
JSJ5M-23	BOLT
JSJ5M-24	POWER UNIT ASSY
JSJ5M-25	COVER
JSJ5M-26	SPRING
JSJ5M-27	BOLT
JSJ5M-28	UNIVERSAL JOINT
JSJ5M-29	PEDAL

### PART NO.

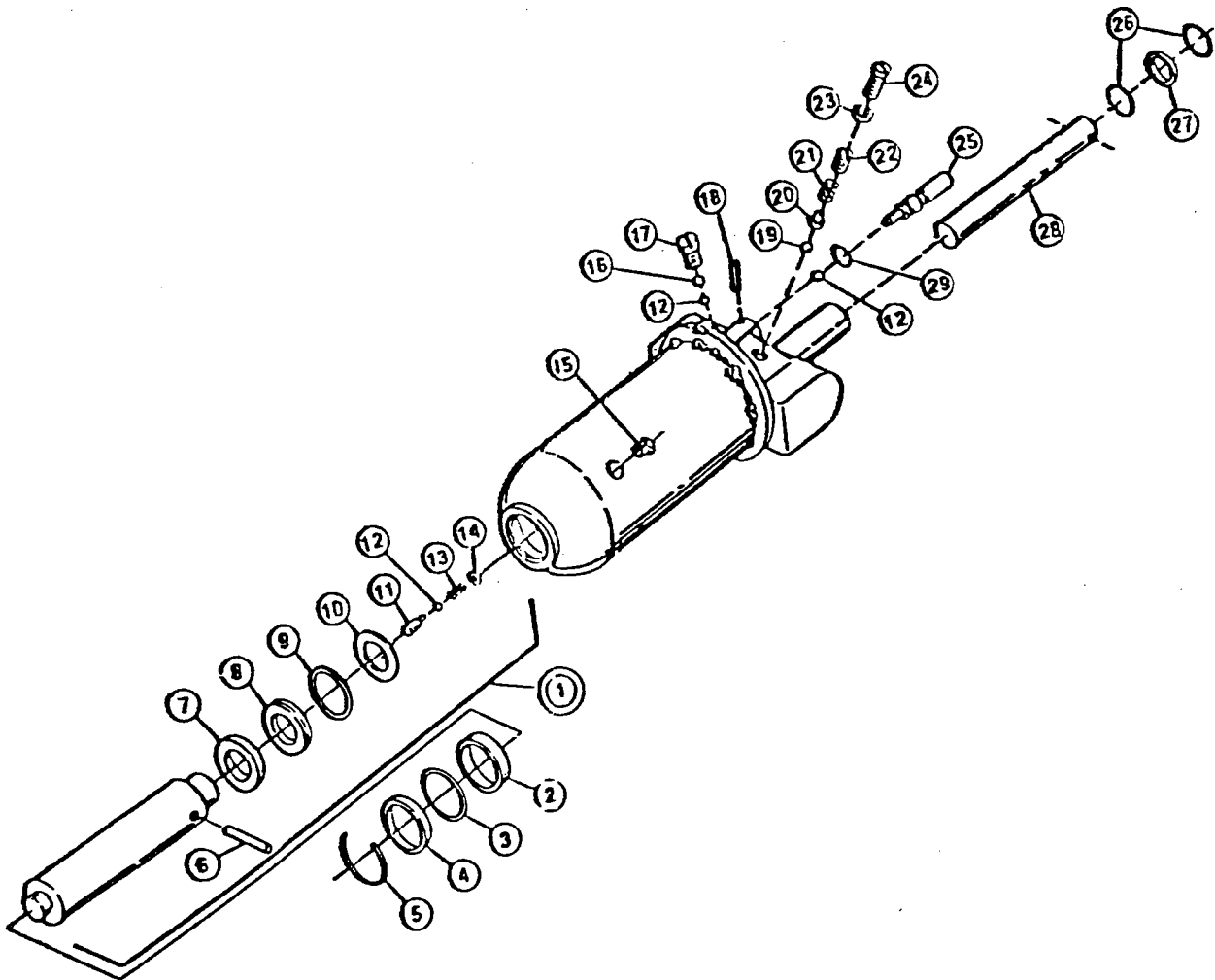
### DESCRIPTION

JSJ5M-30	DRY BEARING
JSJ5M-31	WASHER
JSJ5M-32	E-RING
JSJ5M-33	SHAFT
JSJ5M-34	LINK PIN
JSJ5M-35	PUSH NUT
JSJ5M-36	LINK
JSJ5M-37	PUMP PLUNGER PIN
JSJ5M-38	WASHER
JSJ5M-39	STOPPER RING
JSJ5M-40	NUT
JSJ5M-41	WASHER
JSJ5M-42	BOLT
JSJ5M-43	HANDLE SOCKET
JSJ5M-44	HANDLE ASSY
JSJ5M-45	GRIP
JSJ5M-46	SPRING PIN
JSJ5M-47	SPRING WASHER
JSJ5M-48	SCREW
JSJ5M-49	HANDLE
JSJ5M-50	RELEASE ROD
JSJ5M-51	TUBE
JSJ5M-52	LEVER
JSJ5M-53	WASHER
JSJ5M-54	LOCK SPRING
JSJ5M-55	COTTER PIN
JSJ5M-56	COTTER PIN
JSJ5M-57	LOCK PIN

# FILE

## POWER UNIT ASSEMBLY

JSJ-5M



PART NO.	DESCRIPTION
JSJ5M-P01	RAM ASSEMBLY
JSJ5M-P02	STOPPER RING
JSJ5M-P03*	CYLINDER O-RING
JSJ5M-P04	STUFFING RING
JSJ5M-P05	SNAP RING
JSJ5M-P06	HORIZONTAL PIN
JSJ5M-P07	PACKING SEAT
JSJ5M-P08*	BACK UP RING
JSJ5M-P09*	RAM O-RING
JSJ5M-P10	RAM O-RING STOPPER
JSJ5M-P11	VERTICAL PIN
JSJ5M-P12	BALL
JSJ5M-P13	RAM SPRING
JSJ5M-P14	RAM SPRING STOPPER
JSJ5M-P15*	OIL PLUG

PART NO.	DESCRIPTION
JSJ5M-P16	BALL
JSJ5M-P17	PLUG
JSJ5M-P18	SPRING PIN
JSJ5M-P19	BALL
JSJ5M-P20	BALL SEAT
JSJ5M-P21	SPRING
JSJ5M-P22	SAFETY VALVE PLUG
JSJ5M-P23*	PACKING
JSJ5M-P24	SAFETY VALVE PLUG
JSJ5M-P25	RELEASE STEM
JSJ5M-P26*	PUMP O-RING
JSJ5M-P27*	BACK UP RING
JSJ5M-P28	PUMP PLUNGER
JSJ5M-P29*	O-RING
JSJ5M-RK	REPAIR KIT

\*PART INCLUDED IN REPAIR KIT