



# **OPERATOR'S MANUAL**

## **JSJ-3M SERVICE JACK**

**Stock No. M-454330**

FILE

## JSJ-3M SERVICE JACK

Your JET Service Jack is engineered and fabricated to suit your requirements. With our experienced technical background, a rigid inspection by our well organized Quality Assurance Group, your jack is guaranteed with confidence for its long and trouble-free life.

### 1. Precautions

1. This jack is designed for lifting vehicles only.
2. The vehicle owner's manual should be consulted prior to the lifting of the vehicle.
3. The jack **must** be on level and solid ground with wheels of vehicle facing straight ahead.
4. **No one** should remain in a vehicle that is being lifted.
5. When lifting the vehicle, be sure to place the axle right on the center of the jack saddle.
6. After lifting the vehicle, be sure to **place safety stands** under the axles.
7. **NEVER** get under a vehicle that is supported only by a jack.
8. **NEVER** move the jack while it is supporting the vehicle.
9. When lowering the vehicle, make sure **nobody** is around or under the lifted vehicle and **slowly** lower the vehicle with special attention to jack saddle.
10. Safety valve is factory adjusted and no further adjustment is required.
11. While not in use, **always** keep the handle straight up and locked so that it won't fall.

### 2. Operating Instructions

#### Before using the jack:

1. Insert the handle into handle socket fully and tighten the thumb screw on the socket securely.
2. Open the release valve by turning the release valve control knob counter-clockwise and pump the handle about 6 full strokes to let the air out of the hydraulic system.

Then close the release valve by turning the release valve control knob clockwise as far as it will go. Pump the handle up to full extension of jack. Lower the jack by opening the release valve.

**Note:** If the jack does not immediately respond to pump action, repeat step 2 above.

#### To use the jack:

1. To raise the vehicle, close the release valve by turning release valve control knob clockwise as far as it will go. Then carefully position the jack under the vehicle. Pull the lock lever up and push it over to the left to slide into upper slot, then start pumping the handle. A foot pumping pedal is also provided for faster operation. Pump the jack handle to lift the vehicle to the desired height.
2. To lower the vehicle, **SLOWLY** and **CAREFULLY** rotate the release valve control knob counterclockwise. Descending speed can be controlled by opening amount of release valve.
3. When the jack is transported, the handle may be removed and carried separately.

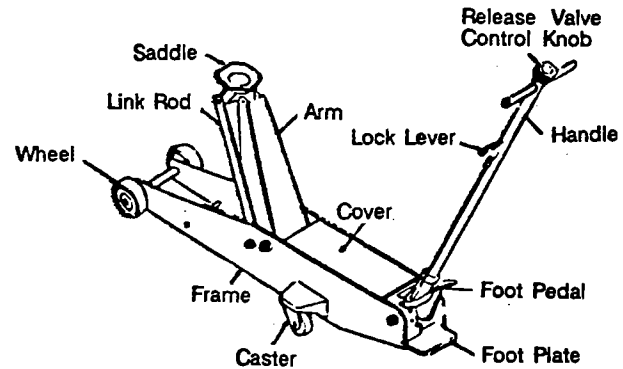
### 3. Specifications

MODEL	JSJ-3M
STOCK	454330
CAPACITY	3 TON
MIN. HEIGHT	5.1 in.
MAX. HEIGHT	24 in.
HEIGHT OF FRAME	7.5 in.
OVERALL LENGTH	51.6 in.
OVERALL WIDTH	12.8 in.
HANDLE	42.1 in.
WEIGHT	143 lbs.

### FEATURES

Strong steel side plate  
 Swivel saddle  
 Heat Treated parts at maximum stress points  
 Heavy duty application  
 Locking "T" bar handles and foot pump  
 Hydraulic cylinder parts high pressure tested at the factory

### 4. Name of Principal Parts



### 5. Maintenance and Care

Check Points	Check Item	Remarks
Arm	Functional condition (Pump the jack to its full lifting height with no load then check smooth action of the lift arm)	Lubricate Pin and Functional portions Replace distorted or damaged parts
Front Wheel	Functional condition	Lubricate functional portion Replace damaged or worn-out
Rear Wheel	Functional condition	Lubricate functional portions Replace damaged or wear parts Tighten securely loose bolts
Power Unit	Proper oil level  Oil leakage	Supply oil, if necessary (Replace oil in the reservoir at least once a year) Replace packing
Handle	Functional Condition or loose	Lubricate pin or functional portions Tighten securely loose bolts Replace damaged parts

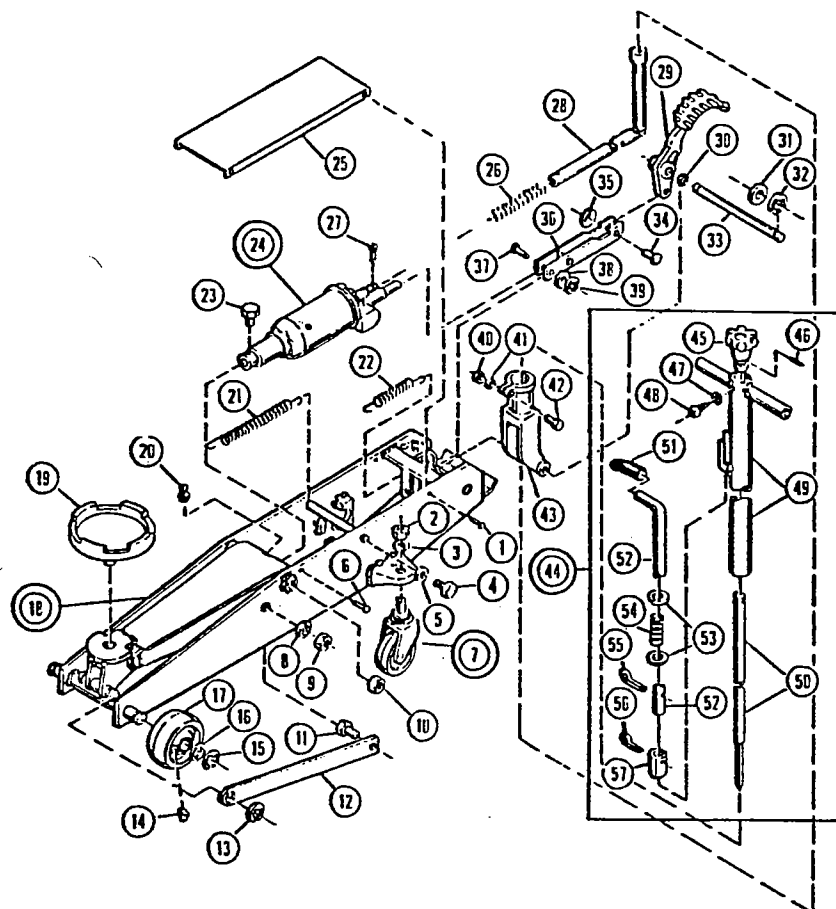
Note: 1. Oil for functional portion: Lubricatory oil  
 2. Oil for jack: Hydraulic jack oil or bearing oil TSO VG 10  
 NEVER use brake fluid or any other high viscous or volatile oil

JS-3m  
**FILE**

## 6. Possible Problems and Remedies

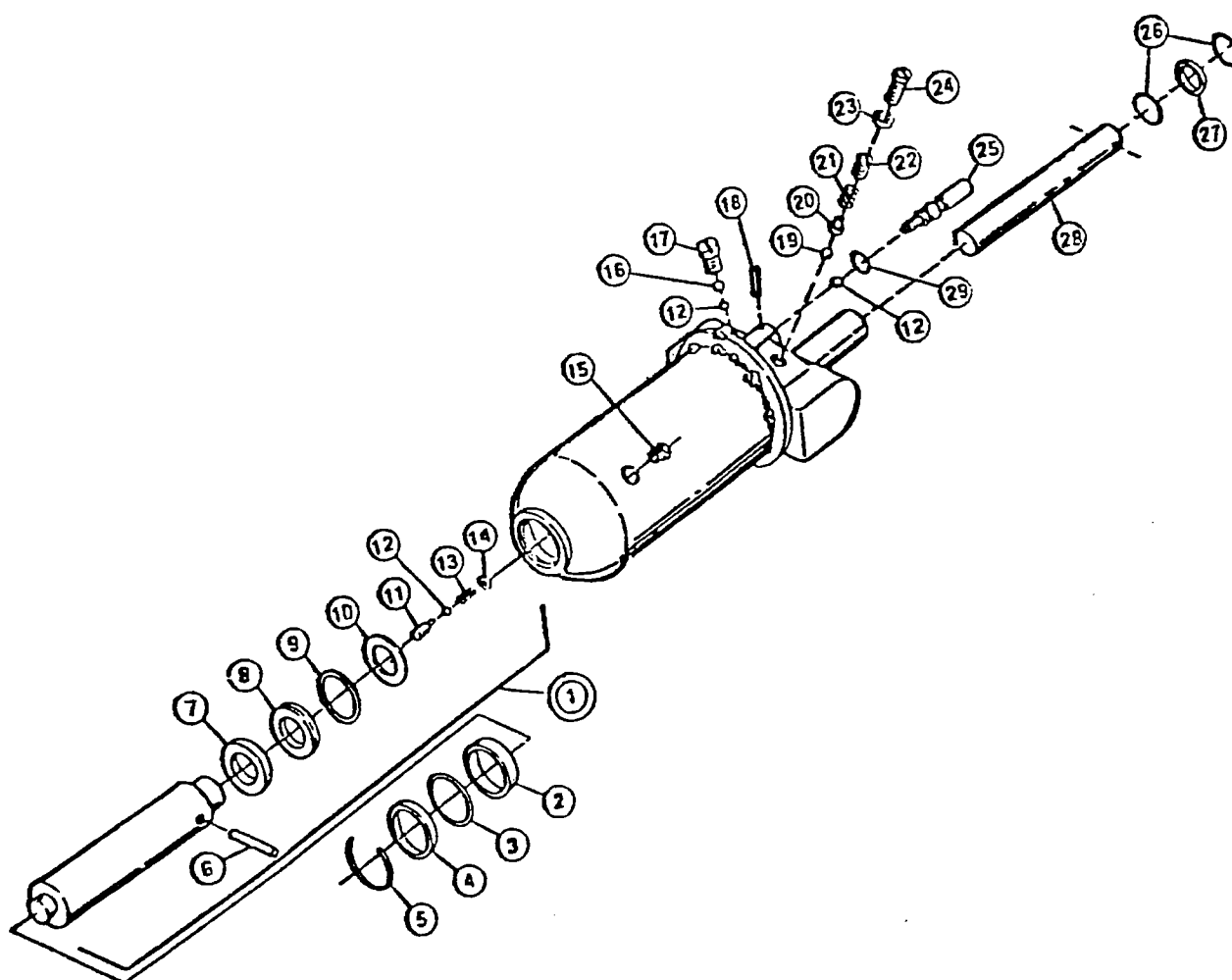
Possible Problem	Possible Cause	Remedy
Will not lift at all	Release Valve not properly closed No oil in system Delivery Valve and/or By-Pass Valve malfunctioning (Valve Ball not properly seated) Packing worn out or defective	Tighten securely  Fill to prescribed level Clean to remove dirt or foreign matter and replace oil  Replace Packing
Will lift only part way	Oil level low or too high	Fill or remove excess oil
Will lift load, but will not hold	Either of the following valves not functioning a. Suction Valve b. Delivery Valve c. Release Valve d. By-Pass Valve Packing worn out or defective	Inspect Valves-clean and adjust seat surface     Replace Packing
Will not lower	Release Valve not opening	Clean and adjust Release Valve
Poor lifting	Pump Packing defective or Valves malfunctioning Dirty oil Air in system	Replace Packings and/or clean Valves Replace oil Remove air from system
Will not lower completely	Piston Rod bent or marred Jack Spring damaged Link section warped or deformed due to possible over-loading	Replace Piston Rod Replace Spring Replace warped parts

## JSJ-3M



PART NO.	DESCRIPTION	PART NO.	DESCRIPTION
JSJ3M-01	RIVET	JSJ3M-30	DRY BEARING
JSJ3M-02	NUT	JSJ3M-31	WASHER
JSJ3M-03	SPRING WASHER	JSJ3M-32	E-RING
JSJ3M-04	BOLT	JSJ3M-33	SHAFT
JSJ3M-05	SPRING WASHER	JSJ3M-34	LINK PIN
JSJ3M-06	SCREW	JSJ3M-35	PUSH NUT
JSJ3M-07	REAR WHEEL ASSY	JSJ3M-36	LINK
JSJ3M-08	SPRING WASHER	JSJ3M-37	PUMP PLUNGER PIN
JSJ3M-09	NUT	JSJ3M-38	WASHER
JSJ3M-10	NUT	JSJ3M-39	STOPPER RING
JSJ3M-11	LINK ROD BOLT	JSJ3M-40	NUT
JSJ3M-12	LINK ROD	JSJ3M-41	WASHER
JSJ3M-13	STOPPER RING	JSJ3M-42	BOLT
JSJ3M-14	GREASE NIPPLE	JSJ3M-43	HANDLE SOCKET
JSJ3M-15	STOPPER RING	JSJ3M-44	HANDLE ASSY
JSJ3M-16	FRONT COLLAR	JSJ3M-45	GRIP
JSJ3M-17	FRONT WHEEL	JSJ3M-46	SPRING PIN
JSJ3M-18	FRAME & LIFT ARM ASSY	JSJ3M-47	SPRING WASHER
JSJ3M-19	SADDLE	JSJ3M-48	SCREW
JSJ3M-20	GREASE NIPPLE	JSJ3M-49	HANDLE
JSJ3M-21	RETURN SPRING	JSJ3M-50	RELEASE ROD
JSJ3M-22	PEDAL SPRING	JSJ3M-51	TUBE
JSJ3M-23	BOLT	JSJ3M-52	LEVER
JSJ3M-24	POWER UNIT ASSY	JSJ3M-53	WASHER
JSJ3M-25	COVER	JSJ3M-54	LOCK SPRING
JSJ3M-26	SPRING	JSJ3M-55	COTTER PIN
JSJ3M-27	BOLT	JSJ3M-56	COTTER PIN
JSJ3M-28	UNIVERSAL JOINT	JSJ3M-57	LOCK PIN
JSJ3M-29	PEDAL		

## POWER UNIT ASSEMBLY



PART NO.	DESCRIPTION
JSJ3M-P01	RAM ASSEMBLY
JSJ3M-P02	STOPPER RING
JSJ3M-P03*	CYLINDER O-RING
JSJ3M-P04	STUFFING RING
JSJ3M-P05	SNAP RING
JSJ3M-P06	HORIZONTAL PIN
JSJ3M-P07	PACKING SEAT
JSJ3M-P08*	BACK UP RING
JSJ3M-P09*	RAM O-RING
JSJ3M-P10	RAM O-RING STOPPER
JSJ3M-P11	VERTICAL PIN
JSJ3M-P12	BALL
JSJ3M-P13	RAM SPRING
JSJ3M-P14	RAM SPRING STOPPER
JSJ3M-P15*	OIL PLUG

PART NO.	DESCRIPTION
JSJ3M-P16	BALL
JSJ3M-P17	PLUG
JSJ3M-P18	SPRING PIN
JSJ3M-P19	BALL
JSJ3M-P20	BALL SEAT
JSJ3M-P21	SPRING
JSJ3M-P22	SAFETY VALVE PLUG
JSJ3M-P23*	PACKING
JSJ3M-P24	SAFETY VALVE PLUG
JSJ3M-P25	RELEASE STEM
JSJ3M-P26*	PUMP O-RING
JSJ3M-P27*	BACK UP RING
JSJ3M-P28	PUMP PLUNGER
JSJ3M-P29*	O-RING
JSJ3M-RK	REPAIR KIT

\* PART INCLUDED IN REPAIR KIT