



OPERATOR'S MANUAL

JSJ-2-1/4SJ Service Jack

FILE

JSJ-2-1/4SJ

JSJ-2-1/4SJ SERVICE JACK

Your JET Service Jack is engineered and fabricated to suit your requirements. With our experienced technical background, a rigid inspection by our well organized Quality Assurance Group, your jack is guaranteed with confidence for its long and trouble-free life.

1. Precautions

1. This jack is designed for lifting vehicles only.
2. The vehicle owner's manual should be consulted prior to the lifting of the vehicle.
3. The jack **must** be on level and solid ground with wheels of vehicle facing straight ahead.
4. **No one** should remain in a vehicle that is being lifted.
5. When lifting the vehicle, be sure to place the axle right on the center of the jack saddle.
6. After lifting the vehicle, be sure to **place safety stands** under the axles.
7. **NEVER** get under a vehicle that is supported only by a jack.
8. **NEVER** move the jack while it is supporting the vehicle.
9. When lowering the vehicle, make sure **nobody** is around or under the lifted vehicle and **slowly** lower the vehicle with special attention to jack saddle.
10. Safety valve is factory adjusted and no further adjustment is required.
11. While not in use, **always** keep the handle straight up and locked so that it won't fall.

2. Operating Instructions

Before using the jack:

1. Insert the handle into handle socket fully and tighten the thumb screw on the socket securely.
2. Open the release valve by turning the release valve control knob counter-clockwise and pump the handle about 6 full strokes to let the air out of the hydraulic system.

Then close the release valve by turning the release valve control knob clockwise as far as it will go. Pump the handle up to full extension of jack. Lower the jack by opening the release valve.

Note: If the jack does not immediately respond to pump action, repeat step 2 above.

To use the jack:

1. To raise the vehicle, close the release valve by turning release valve control knob clockwise as far as it will go. Then carefully position the jack under the vehicle. Pump the jack handle to lift the vehicle to the desired height.
2. To lower the vehicle, **SLOWLY** and **CAREFULLY** rotate the release valve control knob counterclockwise. Descending speed can be controlled by opening amount of release valve.
3. When the jack is transported, the handle may be removed and carried separately.

FILE

JSJ-2-1/4SJ

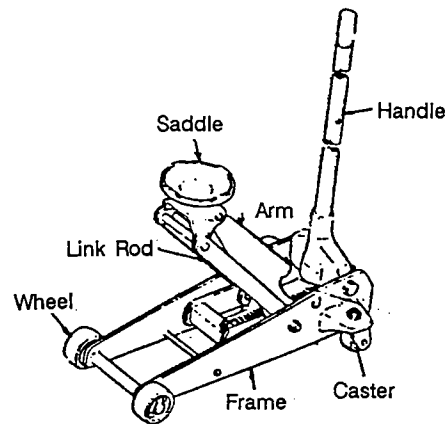
3. Specifications

MODEL	JSJ-2-1/4SJ
STOCK	454325
CAPACITY	2-1/4 TON
MIN. HEIGHT	5-1/8 in.
MAX. HEIGHT	19-1/4 in.
OVERALL LENGTH	25-7/8 in.
OVERALL WIDTH	13-3/4 in.
HANDLE	41-1/4 in.
WEIGHT	85 lbs.

FEATURES

- Strong steel side plate
- Swivel saddle
- Heat Treated parts at maximum stress points
- Heavy duty application
- Locking "T" bar handles and foot pump
- Hydraulic cylinder parts high pressure tested at the factory

4. Name of Principal Parts



5. Maintenance and Care

Check Points	Check Item	Remarks
Arm	Functional condition (Pump the jack to its full lifting height with no load then check smooth action of the lift arm)	Lubricate Pin and Functional portions Replace distorted or damaged parts
Front Wheel	Functional condition	Lubricate functional portion Replace damaged or worn-out
Rear Wheel	Functional condition	Lubricate functional portions Replace damaged or wear parts Tighten securely loose bolts
Power Unit	Proper oil level Oil leakage	Supply oil, if necessary (Replace oil in the reservoir at least once a year) Replace packing
Handle	Functional Condition or loose	Lubricate pin or functional portions Tighten securely loose bolts Replace damaged parts

Note: 1. Oil for functional portion: Lubricatory oil
2. Oil for jack: Hydraulic jack oil or bearing oil TSO VG 10
NEVER use brake fluid or any other high viscous or volatile oil

FILE

6. Possible Problems and Remedies

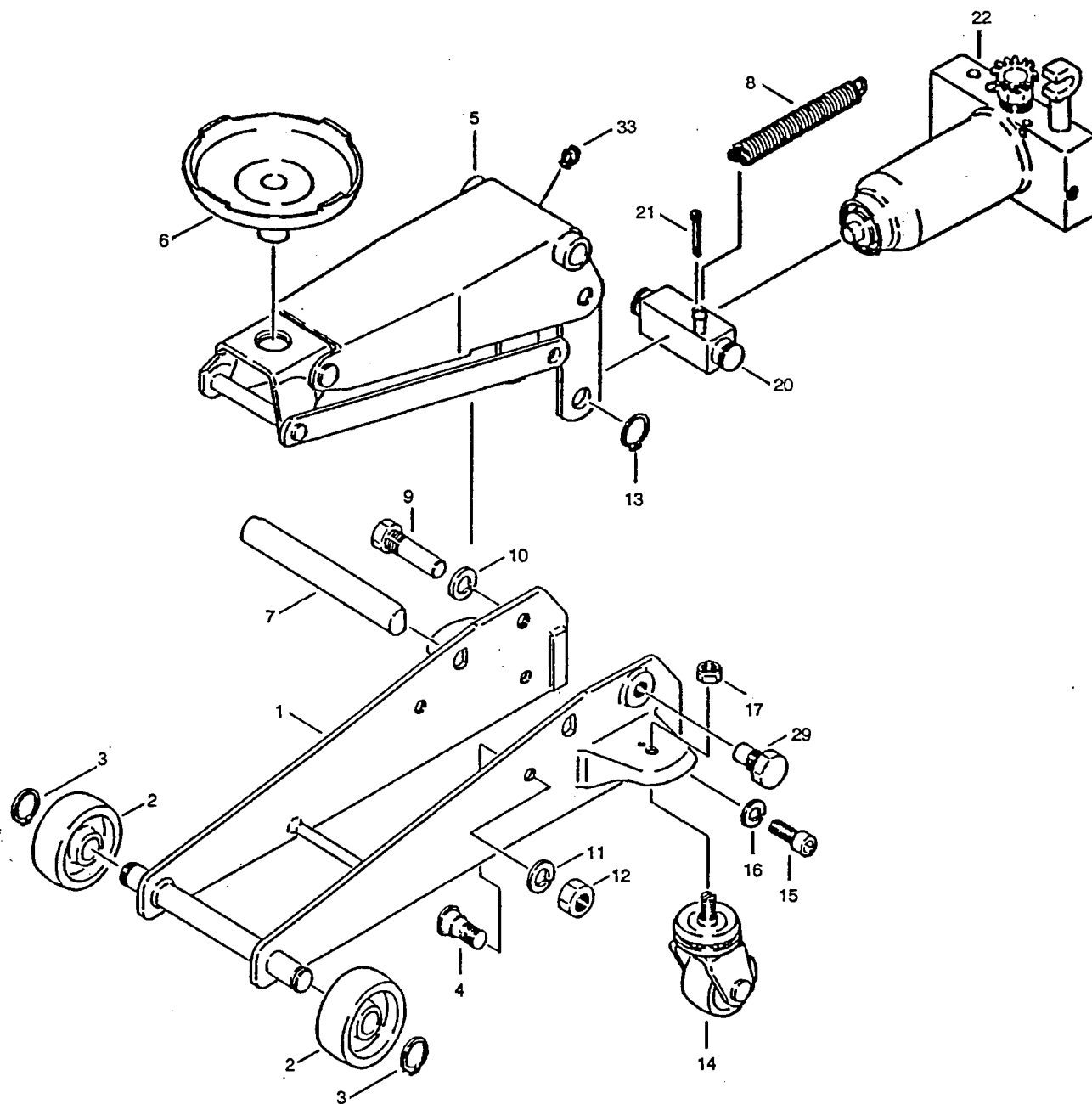
Possible Problem	Possible Cause	Remedy
Will not lift at all	Release Valve not properly closed No oil in system Delivery Valve and/or By-Pass Valve malfunctioning (Valve Ball not properly seated) Packing worn out or defective	Tighten securely Fill to prescribed level Clean to remove dirt or foreign matter and replace oil Replace Packing
Will lift only part way	Oil level low or too high	Fill or remove excess oil
Will lift load, but will not hold	Either of the following valves not functioning a. Suction Valve b. Delivery Valve c. Release Valve d. By-Pass Valve Packing worn out or defective	Inspect Valves-clean and adjust seat surface Replace Packing
Will not lower	Release Valve not opening	Clean and adjust Release Valve
Poor lifting	Pump Packing defective or Valves malfunctioning Dirty oil Air in system	Replace Packings and/or clean Valves Replace oil Remove air from system
Will not lower completely	Piston Rod bent or marred Jack Spring damaged Link section warped or deformed due to possible over-loading	Replace Piston Rod Replace Spring Replace warped parts

FILE

JSJ-2-1/4S

JSJ-2 1/4SJ

MAIN FRAME



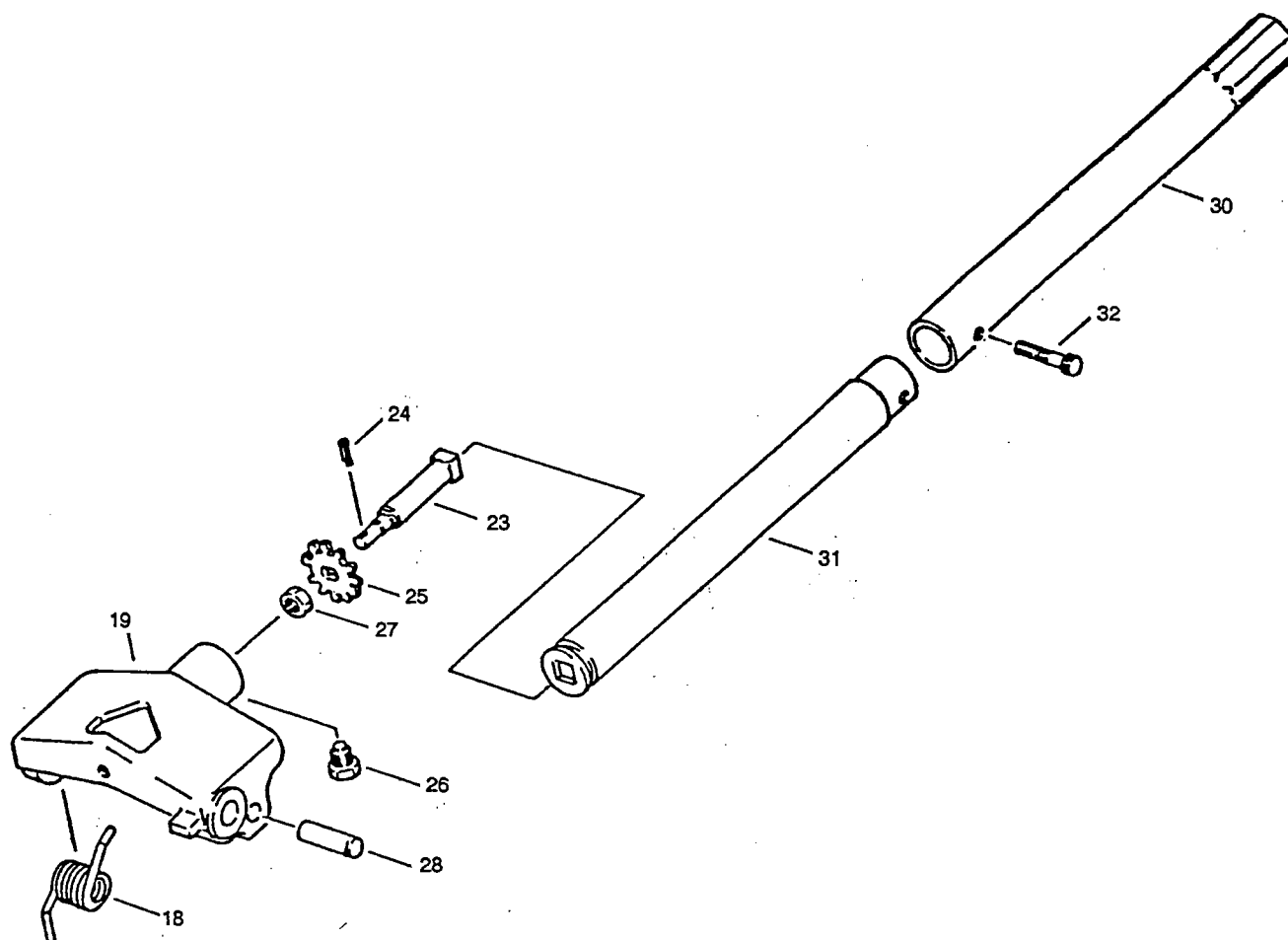
PART NO.	DESCRIPTION
JSJ214SJ-01	SIDE PLATE ASSY
JSJ214SJ-02	WHEEL
JSJ214SJ-03	RETAINER RING
JSJ214SJ-04	BOLT (LINK)
JSJ214SJ-05	LIFT ARM ASSY
JSJ214SJ-06	SADDLE
JSJ214SJ-07	SHAFT
JSJ214SJ-08	RETURN SPRING
JSJ214SJ-09	BOLT
JSJ214SJ-10	LOCK WASHER
JSJ214SJ-11	LOCK WASHER

PART NO.	DESCRIPTION
JSJ214SJ-12	NUT
JSJ214SJ-13	RETAINER RING
JSJ214SJ-14	REAR WHEEL ASSY
JSJ214SJ-15	SOCKET HEAD CAP SCREW
JSJ214SJ-16	LOCK WASHER
JSJ214SJ-17	LOCK NUT
JSJ214SJ-20	LINK RAM ASSY
JSJ214SJ-21	COTTER PIN
JSJ214SJ-22	POWER UNIT ASSY
JSJ214SJ-29	BOLT
JSJ214SJ-33	GREASE FITTING

JSJ-2-1/450

HANDLE ASSEMBLY

FILE



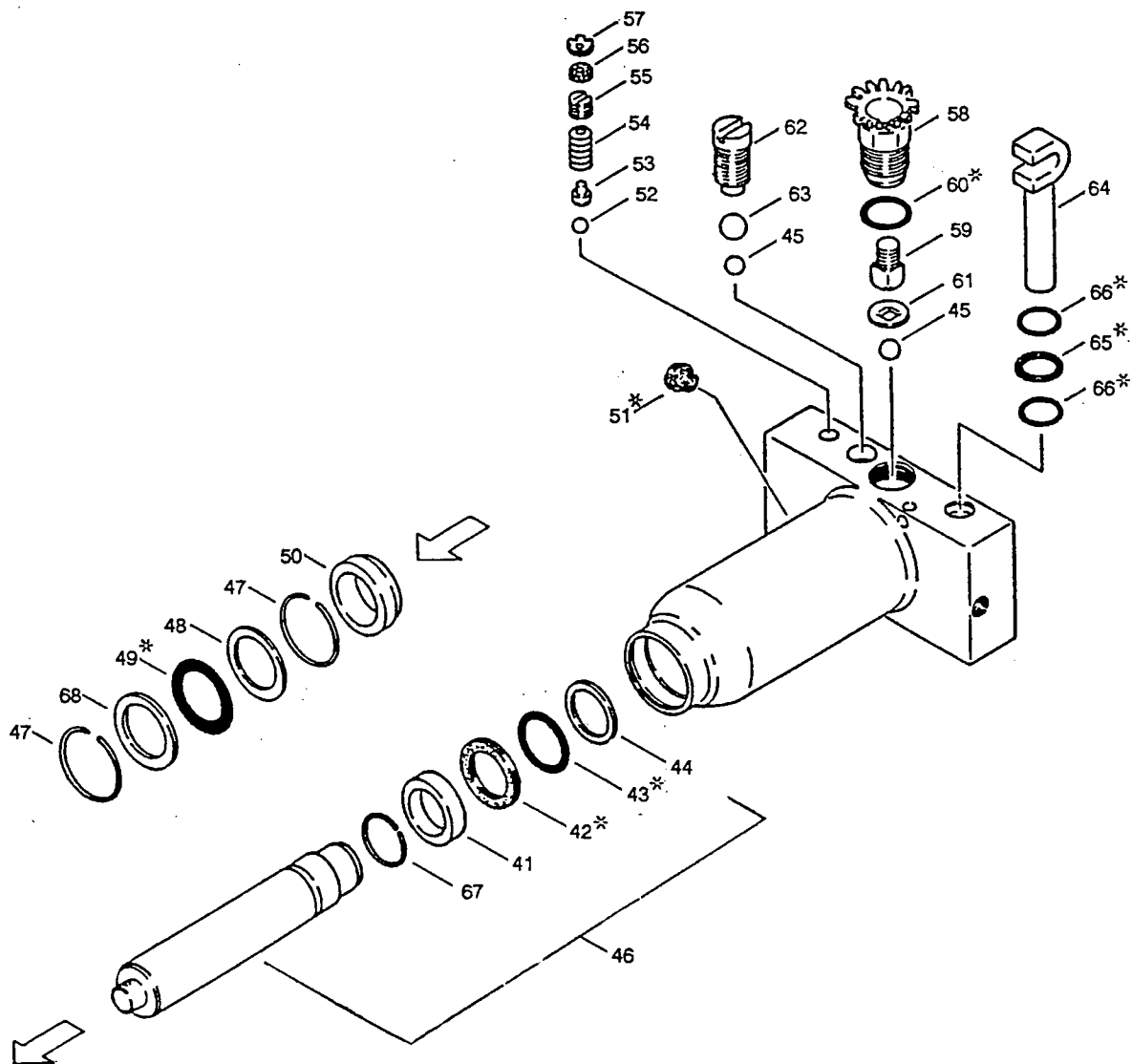
PART NO.	DESCRIPTION
JSJ214SJ-18	SPRING
JSJ214SJ-19	HANDLE SOCKET
JSJ214SJ-23	GEAR SHIFT
JSJ214SJ-24	COTTER PIN
JSJ214SJ-25	HANDLE SOCKET GEAR
JSJ214SJ-26	HANDLE BOLT

PART NO.	DESCRIPTION
JSJ214SJ-27	NUT
JSJ214SJ-28	PLUNGER PIN
JSJ214SJ-30	HANDLE (UPPER HALF)
JSJ214SJ-31	HANDLE (LOWER HALF)
JSJ214SJ-32	SOCKET HEAD CAP SCREW

JSJ-2-1/4SJ

POWER UNIT ASSEMBLY

FILE



PART NO.	DESCRIPTION
JSJ214SJ-41	RAM SEAL WASHER
JSJ214SJ-42*	O RING RETAINER
JSJ214SJ-43*	O RING
JSJ214SJ-44	SEAL RETAINER WASHER
JSJ214SJ-45	BALL
JSJ214SJ-46	RAM PLUNGER ASSY
JSJ214SJ-47	SNAP RING
JSJ214SJ-48	STOPPER RING
JSJ214SJ-49*	O RING
JSJ214SJ-50	SPACER
JSJ214SJ-51*	OIL FILL PLUG
JSJ214SJ-52	BALL
JSJ214SJ-53	PLUNGER
JSJ214SJ-54	COMPRESSION SPRING

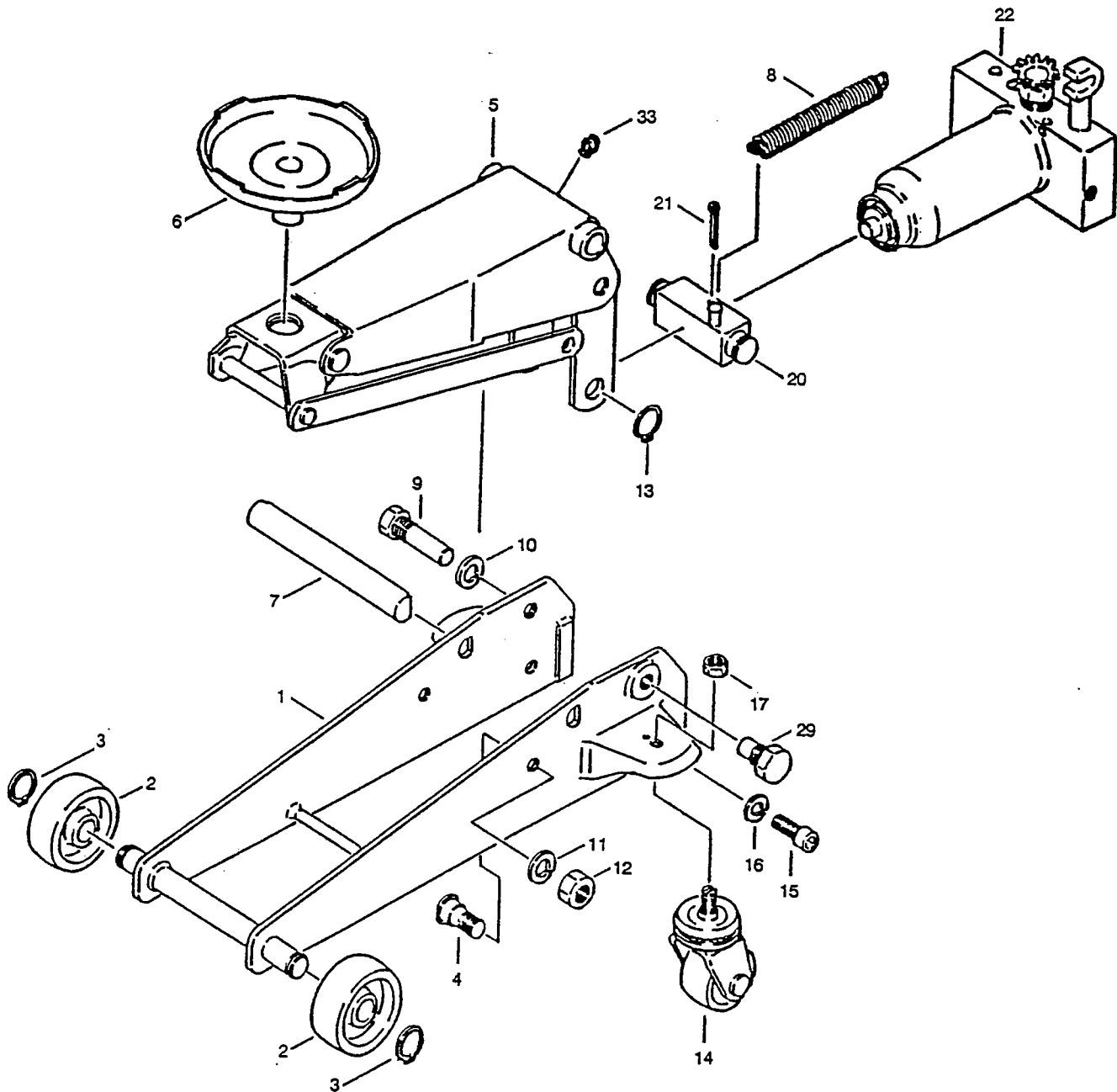
PART NO.	DESCRIPTION
JSJ214SJ-55	ADJUSTING SCREW
JSJ214SJ-56	GASKET
JSJ214SJ-57	PUSHING NUT
JSJ214SJ-58	REL VALVE ASSY
JSJ214SJ-59	ACTUATOR
JSJ214SJ-60*	O RING
JSJ214SJ-61	GUIDE PLATE
JSJ214SJ-62	PLUG (SCREW)
JSJ214SJ-63	BALL
JSJ214SJ-64	PUMP PLUNGER
JSJ214SJ-65*	BACK UP RING
JSJ214SJ-66*	O RING
JSJ214SJ-67	SNAP RING
JSJ214SJ-68	STOPPER RING B
JSJ214SJ-RK	REPAIR KIT

*INCLUDED IN REPAIR KIT

JSJ-2 1/4SJ

MAIN FRAME

FILE

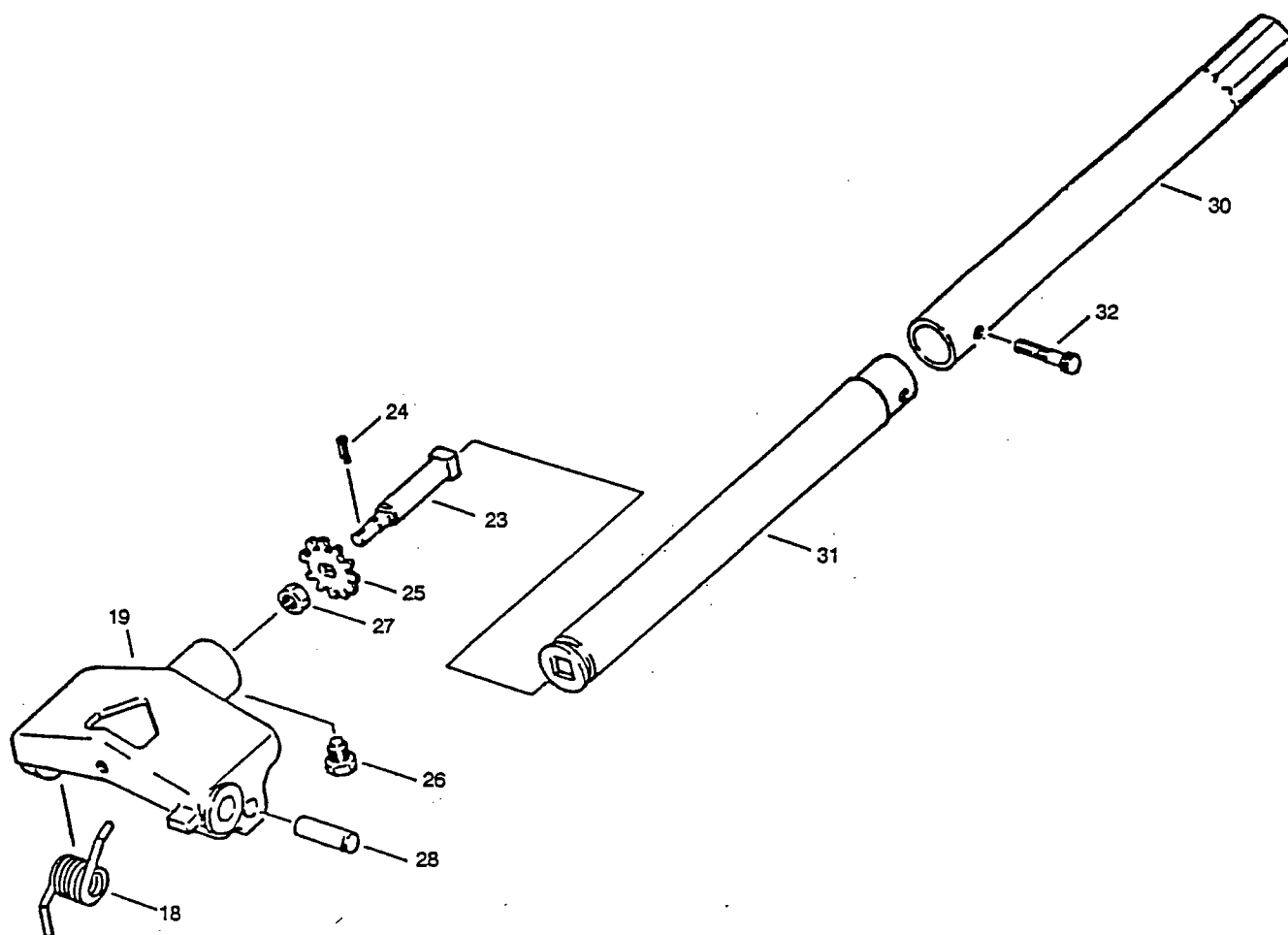


PART NO.	DESCRIPTION
JSJ214SJ-01	SIDE PLATE ASSY
JSJ214SJ-02	WHEEL
JSJ214SJ-03	RETAINER RING
JSJ214SJ-04	BOLT (LINK)
JSJ214SJ-05	LIFT ARM ASSY
JSJ214SJ-06	SADDLE
JSJ214SJ-07	SHAFT
JSJ214SJ-08	RETURN SPRING
JSJ214SJ-09	BOLT
JSJ214SJ-10	LOCK WASHER
JSJ214SJ-11	LOCK WASHER

PART NO.	DESCRIPTION
JSJ214SJ-12	NUT
JSJ214SJ-13	RETAINER RING
JSJ214SJ-14	REAR WHEEL ASSY
JSJ214SJ-15	SOCKET HEAD CAP SCREW
JSJ214SJ-16	LOCK WASHER
JSJ214SJ-17	LOCK NUT
JSJ214SJ-20	LINK RAM ASSY
JSJ214SJ-21	COTTER PIN
JSJ214SJ-22	POWER UNIT ASSY
JSJ214SJ-29	BOLT
JSJ214SJ-33	GREASE FITTING

HANDLE ASSEMBLY

FILE
JSJ-2 1/4 SJ



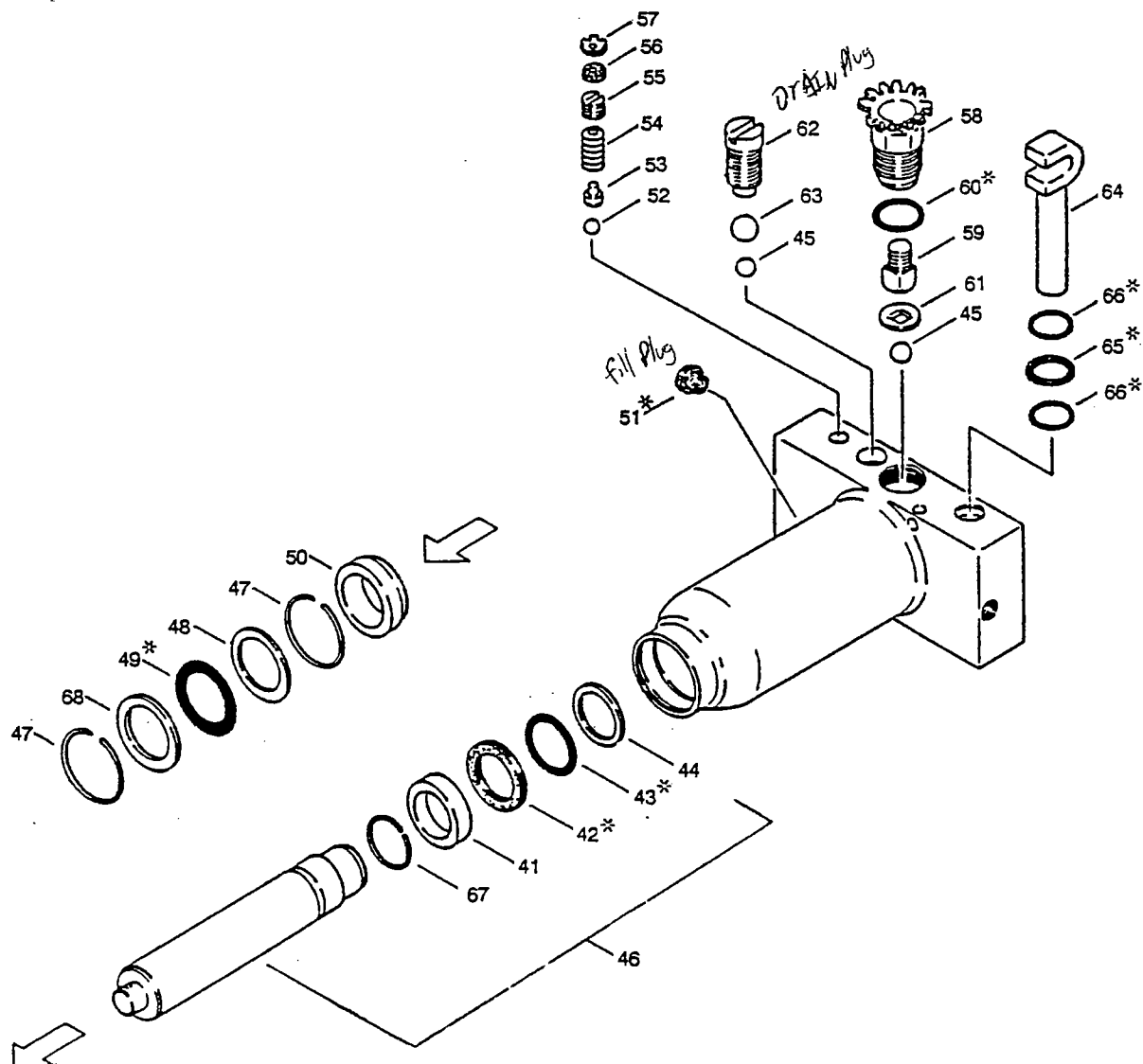
PART NO.	DESCRIPTION
JSJ214SJ-18	SPRING
JSJ214SJ-19	HANDLE SOCKET
JSJ214SJ-23	GEAR SHIFT
JSJ214SJ-24	COTTER PIN
JSJ214SJ-25	HANDLE SOCKET GEAR
JSJ214SJ-26	HANDLE BOLT

PART NO.	DESCRIPTION
JSJ214SJ-27	NUT
JSJ214SJ-28	PLUNGER PIN
JSJ214SJ-30	HANDLE (UPPER HALF)
JSJ214SJ-31	HANDLE (LOWER HALF)
JSJ214SJ-32	SOCKET HEAD CAP SCREW

POWER UNIT ASSEMBLY

FILE

JSJ-2 1/4 SJ



PART NO.	DESCRIPTION
JSJ214SJ-41	RAM SEAL WASHER
JSJ214SJ-42*	O RING RETAINER
JSJ214SJ-43*	O RING
JSJ214SJ-44	SEAL RETAINER WASHER
JSJ214SJ-45	BALL
JSJ214SJ-46	RAM PLUNGER ASSY
JSJ214SJ-47	SNAP RING
JSJ214SJ-48	STOPPER RING
JSJ214SJ-49*	O RING
JSJ214SJ-50	SPACER
JSJ214SJ-51*	OIL FILL PLUG
JSJ214SJ-52	BALL
JSJ214SJ-53	PLUNGER
JSJ214SJ-54	COMPRESSION SPRING

PART NO.	DESCRIPTION
JSJ214SJ-55	ADJUSTING SCREW
JSJ214SJ-56	GASKET
JSJ214SJ-57	PUSHING NUT
JSJ214SJ-58	REL VALVE ASSY
JSJ214SJ-59	ACTUATOR
JSJ214SJ-60*	O RING
JSJ214SJ-61	GUIDE PLATE
JSJ214SJ-62	PLUG (SCREW)
JSJ214SJ-63	BALL
JSJ214SJ-64	PUMP PLUNGER
JSJ214SJ-65*	BACK UP RING
JSJ214SJ-66*	O RING
JSJ214SJ-67	SNAP RING
JSJ214SJ-68	STOPPER RING B
JSJ214SJ-RK	REPAIR KIT

*INCLUDED IN REPAIR KIT