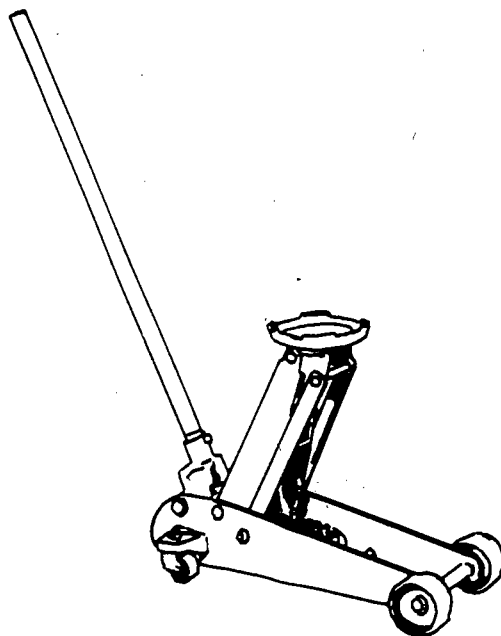




OPERATOR'S MANUAL

JSJ 2 1/4C SERVICE JACK



Jsg 2 1/4C

FILE

WARNING!

1. This is a lifting device only. Do not move or dolly the vehicle while on the jack. The load shall be supported immediately by other appropriate means.
2. Do not overload. Overloading can cause damage to or failure of the jack.
3. Lift only on areas of the vehicle specified by the vehicle manufacturer.
4. This jack is designed for use on hard, level surfaces capable of sustaining the load. Use on other than hard, level surfaces can result in jack instability and possible loss of load.
6. Do not get under vehicle while jack is being used as only support.
7. If jack needs service, contact your local JET distributor for the location of the closest JET Service Station.
8. Use only factory replacement parts when replacement of parts is necessary.
9. Failure to comply with all of these warnings may result in loss of load, damage to jack, and/or failure resulting in personal injury or property damage.

SPECIFICATIONS:

JHJ-2 1/4C

STOCK NUMBER.....	454228
RATED CAPACITY	4400 LBS.
MINIMUM HEIGHT	5-1/8"
MAXIMUM HEIGHT	20"
SADDLE	5-3/4"
OVERALL LENGTH	26"
OVERALL WIDTH	14-1/8"
HANDLE LENGTH	41"
NET WEIGHT (APPROX.)	84-1/2 LBS.
SHIPPING WEIGHT (APPROX.)	88 LBS.

ASSEMBLY INSTRUCTIONS

Note: For parts identification, refer to parts list.

1. Insert upper handle (36) into lower handle (35) and fasten with hex cap bolt (37).
2. Remove handle bolt (33) and spacer (34).
3. Insert handle assembly into handle socket (38). Make sure handle assembly engages gear shaft (27) by turning handle back and forth and observing movement of handle socket gear (30).
4. Install handle bolt (33) and spacer (34) to secure handle assembly.

LUBRICATION

Note: Before initial operation, lubricate the jack as indicated in Fig. 1.

1. **Handle** - use 30W oil on release valve gears below handle and lightly grease handle at point where it fits into socket with #2 tube grease.
2. **Wheels** - use 30W oil on axles and caster bearings.
3. **Lifting Arm** - inject #2 tube grease into tube fitting.
4. **Saddle and Linkage** - use 30W oil on all moving and pivoting parts.
5. **Handle Socket Pivot Bolts** - lubricate with 30W oil.
6. **Plunger and Plunger Pin** - Use #2 tube grease to lubricate connection between pump plunger and pin in handle socket.

LUBRICATION POINTS

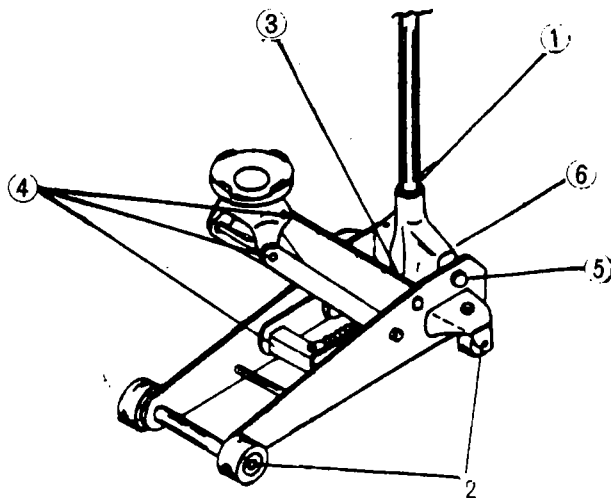


FIGURE 1

OPERATING INSTRUCTIONS

Important: Sometimes during shipment and handling, air gets into the hydraulic system, causing poor lifting performance. Before initial operation, purge any air from the system by fully opening release (turn handle counter-clockwise). Then, while holding the saddle down, pump handle rapidly several times.

RAISING JACK

1. Turn handle clockwise until resistance is felt to close release valve. Do not over tighten.
2. Place jack directly under object to be lifted. Make sure saddle takes up weight firmly and centrally. Check positioning under slight load to confirm jack or load will not slip.
3. Raise jack by pumping handle until desired height is reached. After lifting, secure load by appropriate means. Do **not** use jack as the only means of support.

LOWERING JACK

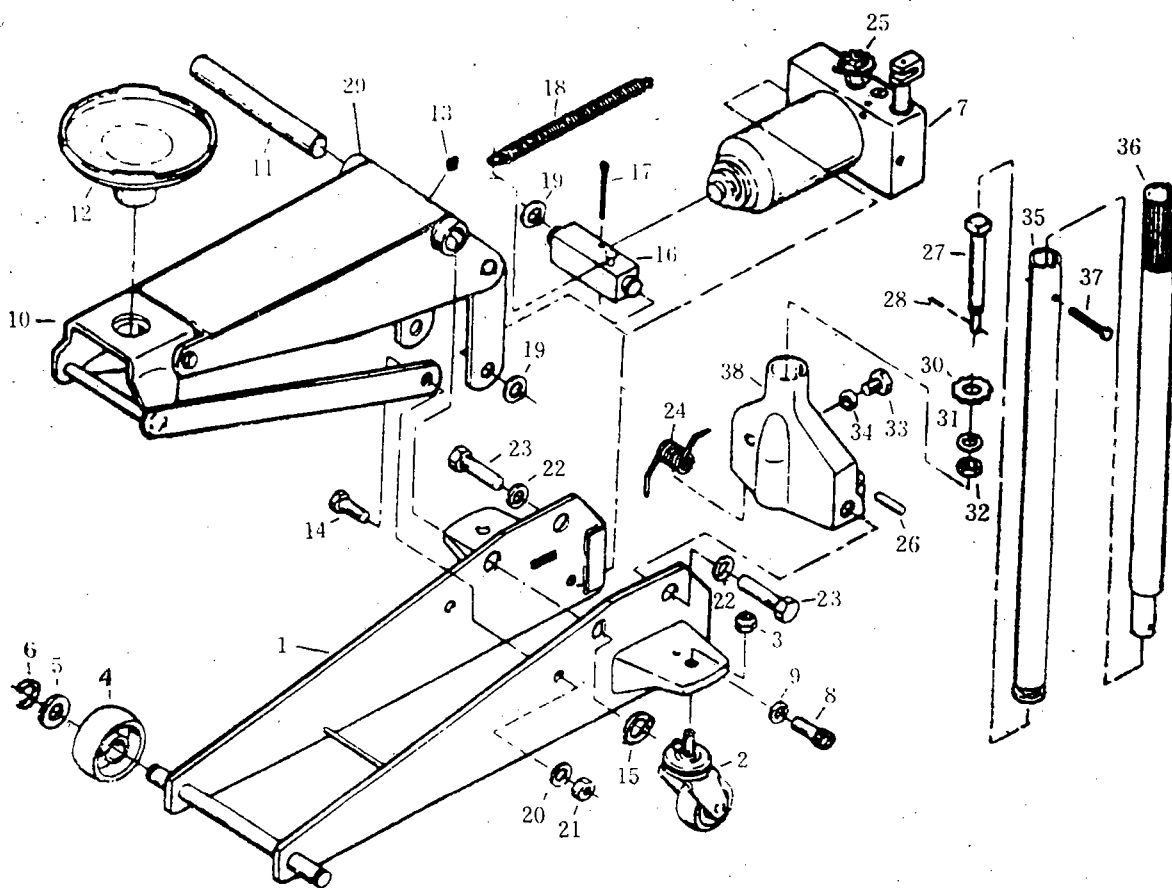
1. Slowly turn handle counter-clockwise. Speed of descent is controlled by amount release valve is turned.

Always store jack in the fully lowered position.

TROUBLESHOOTING

If jack fails to raise to its height limit, fill with just enough good quality hydraulic jack fluid so that jack raises to its height limit.

This technical drawing is an exploded view of a mechanical assembly, likely a hydraulic or pneumatic actuator. The components are numbered 1 through 38. The main body (1) is a long, angled plate. At one end, there is a mounting bracket (10) with a circular flange (12). A long rod (29) passes through the main body. A piston rod (18) is shown extending from a cylinder head (7). A control valve (16) is mounted on the side. A long, thin rod (36) is shown at the bottom right. Various bolts, nuts, and washers (e.g., 13, 14, 15, 19, 20, 21, 22, 23, 24, 25, 26, 27, 28, 30, 31, 32, 33, 34, 35, 37, 38) are shown in their respective assembly positions. The diagram uses dashed lines to indicate the relative positions and assembly sequence of the parts.



PARTS LIST FOR THE JSJ-2 1/4C SERVICE JACK

PLEASE ORDER BY PART NUMBER ONLY

JSJ 2 1/4C
FILE

INDEX NO.	PART NO.	DESCRIPTION	SIZE	QTY.
2	00500	CASTER ASSEMBLY		2
4	00012	FRONT WHEEL		2
6	00802	SNAP RING		2
11	000310	RELEASE VALVE ASSEMBLY **		1
12	00013	SADDLE		1
18	00005	SPRING		1
24	00004	SPRING		1
30	00209	RELEASE VALVE GEAR		1
35	00100	LOWER HANDLE		1
36	00001	UPPER HANDLE		1
37	00817	HEX HEAD SCREW		1
	JSJ214C-RK	REPAIR KIT (NOT SHOWN)		1

NOTE: FOR ALL PARTS LISTED ABOVE, REFER TO "MAIN BODY" PARTS DIAGRAM EXCEPT AS INDICATED BY **. FOR PARTS FOLLOWED BY **, REFER TO PARTS DIAGRAM TITLED "POWER UNIT ASSEMBLY".

NOTE: ALL PARTS NOT LISTED AVAILABLE THROUGH SPECIAL ORDER ONLY. CONTACT JET EQUIPMENT AND TOOLS FOR DETAILS.

POWER UNIT ASSEMBLY

